



Medical Cannabis Program

Dominick V. Zurlo, Ph.D.
**Medical Cannabis Program
Director**

1190 S. St. Francis Drive • Santa Fe, NM 87505 • Phone: 505-827-2613 • Fax: 505-827-2530 • nmhealth.org

Before we start...

On behalf of all colleagues at the Department of Health, we humbly acknowledge we are on the unceded ancestral lands of the original peoples of the Apache, Navajo and Pueblo past and present.

With gratitude we pay our respects to the land, the people and the communities that have and continue to contribute to what today is known as the State of New Mexico.

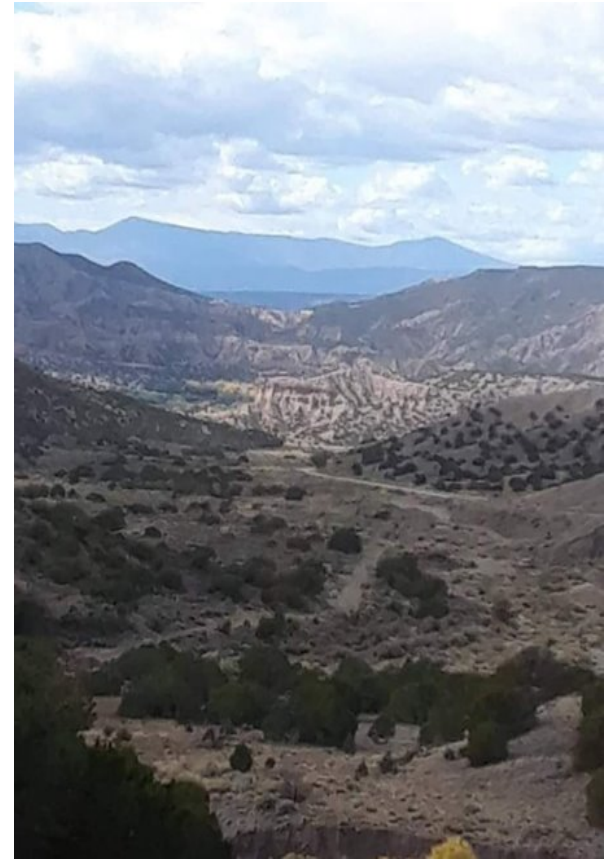


PHOTO COURTESY: HSD Employee

Mission – Department of Health

To ensure health equity, we work with our partners to promote health and well-being, and improve health outcomes for all people in New Mexico.

Goals



1. We expand equitable access to services for all New Mexicans



2. We ensure safety in New Mexico healthcare environments



3. We improve health status for all New Mexicans



4. We support each other by promoting an environment of mutual respect, trust, open communication, and needed resources for staff to serve New Mexicans and to grow and reach their professional goals

Lynn and Erin Compassionate Use Act

The purpose of the Lynn and Erin Compassionate Use Act is to allow the **beneficial use** of medical cannabis in a **regulated system** for **alleviating symptoms** caused by debilitating medical conditions and their medical treatments.



State Agencies Working Together on Cannabis Issues

Adult Use	Medical	Hemp
Regulation and Licensing Department	Department of Health	Environment Department
Licenses cannabis establishments such as: <ul style="list-style-type: none"> • Cultivation • Manufacturing • Testing • Couriers • Dispensaries 	Administer the Medical Patient Registry: <ul style="list-style-type: none"> • Patients • Caregivers • Reciprocal 	Issues permits for: <ul style="list-style-type: none"> • Hemp warehouses • Extraction facilities • Manufacturing facilities • Processing facilities
Regulate cannabis sales	Medical Cannabis Medical Advisory Board	Department of Agriculture
Cannabis Regulatory Advisory Committee	Public Health and Safety Advisory Committee	Licenses hemp cultivation



Other Agencies involved include:

Department of Public Safety; Workforce Solutions; Department of Transportation

Creation of the Public Health and Safety Advisory Committee - 2021

26-2C-4 NMSA 1978 – enacted 2021

D. Beginning December 1, 2024, the public health and safety advisory committee shall provide to the legislature, and the department of health shall publish on its website, an annual report on the health effects of legalizing cannabis products for adult use. The report shall include the following elements relating to cannabis product use and, as applicable, the demographics of persons who are the subject of an element:

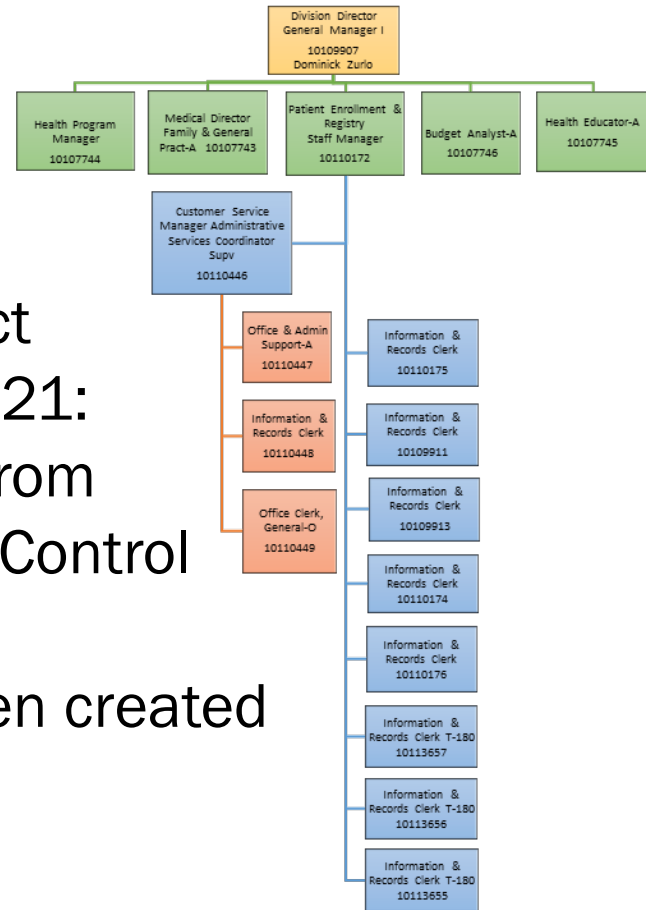
- (1) child access;
- (2) road safety and driving while impaired;
- (3) workplace safety;
- (4) the percentage of emergency room visits and outcomes;
- (5) educational needs for children and adults;
- (6) consumer and product safety;
- (7) the percentage of poison control center calls; and
- (8) the impact of cannabis use on rates of alcohol, opioid and other substance abuse.

Organizational Chart Medical Cannabis Program

FY21 – 28 FTE positions
 FY22 – 18 FTE positions

When the Cannabis Regulation Act was implemented on June 29, 2021:

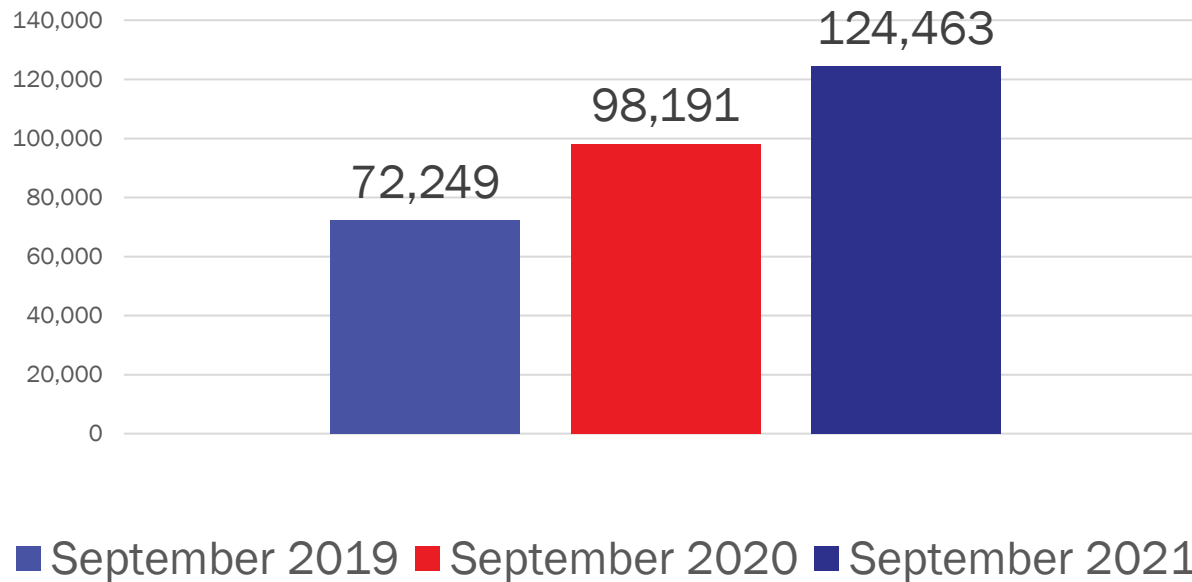
- 13 positions were transferred from NMDOH-MCP to RLD-Cannabis Control Division
- 3 New T-180 positions were then created for NMDOH-MCP



There are Medical Cannabis Patients in Every County in NM

- 124,463 enrolled patients as of September 30, 2021
- 14,967 applications and renewals processed from July 1 - September 30, 2021

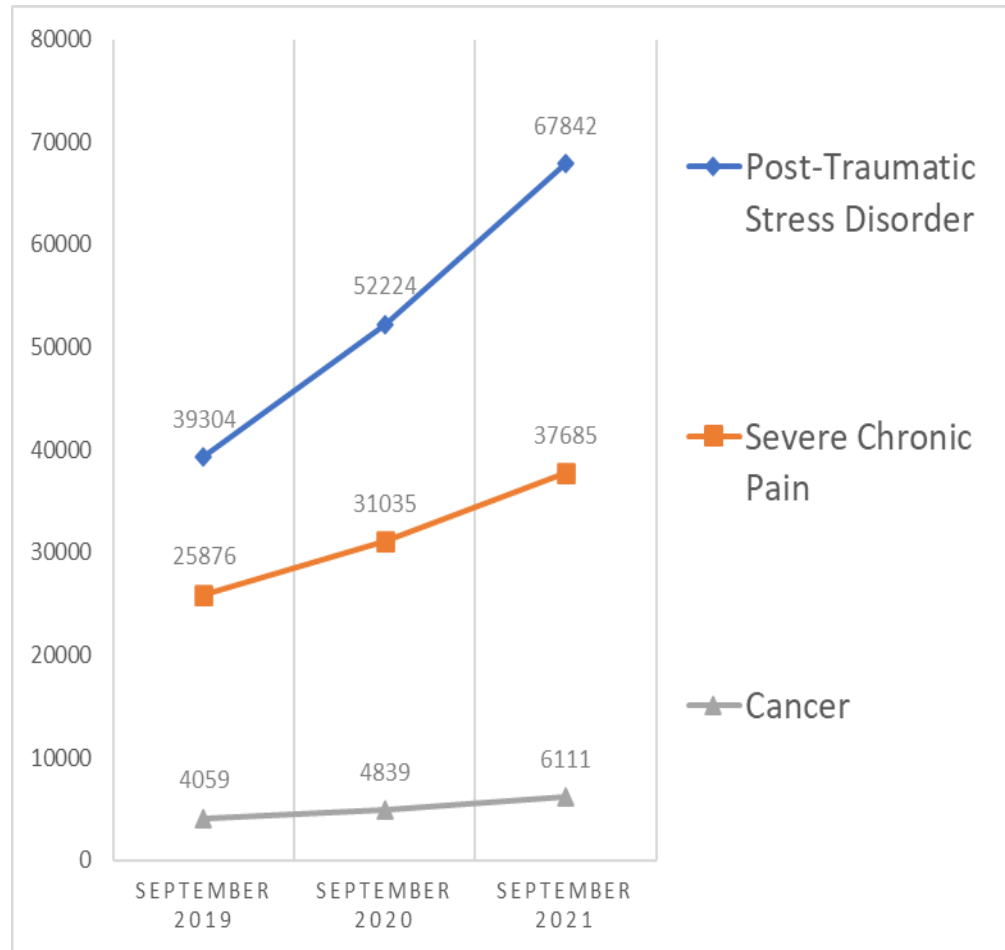
Patient Enrollment 2019-2021



72% increase in patient enrollment from 2019 to 2021

The Three Most Commonly Enrolled Qualifying Conditions 2019-2021

- 28 qualifying conditions
- 111,628 patients are enrolled with one of these three qualifying conditions.
- 12,825 patients are enrolled with one of the other 25 qualifying conditions



Online Patient Portal

Medical Providers can utilize this for in-person or telehealth visits.

Patients can utilize the portal for registering, completing applications and annual certifications, or checking on their remaining units.

An important tool during COVID-19.

The screenshot shows a web browser window with the URL mcp-patient-tracking.nmhealth.org. The page header includes the New Mexico Department of Health Medical Cannabis Division logo. Below the logo is a 'Welcome' section with the following text:

Welcome

The New Mexico Department of Health Medical Cannabis Program encourages all potential patients and caregivers to thoroughly review the information on the Medical Cannabis Division's website: <https://www.nmhealth.org/about/mcpsvcs/>

Please read the instructions before beginning an application to ensure that you have all the required information and documents to submit your application.

Announcements

The new Cannabis Regulation Act (CRA) is effective June 29, 2021. For more information and resources on Adult Use and cannabis business licensing, visit: <https://ccd.nd.state.nm.us/>

Below the welcome message are several navigation buttons: Patient Instructions, Minor (Under 18) Patient Instructions, Caregiver Instructions, Medical Provider Instructions, FAQs, and Rules and Regulations. At the bottom of the page, there are two main buttons: 'Create an Account' and 'Login To Your Account'. The footer of the page includes the copyright notice '© New Mexico'.