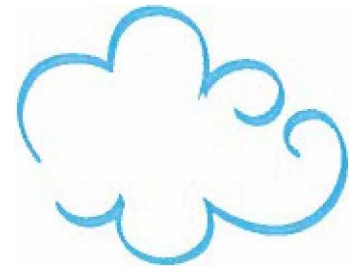


Turquoise Lodge Hospital

Family Program

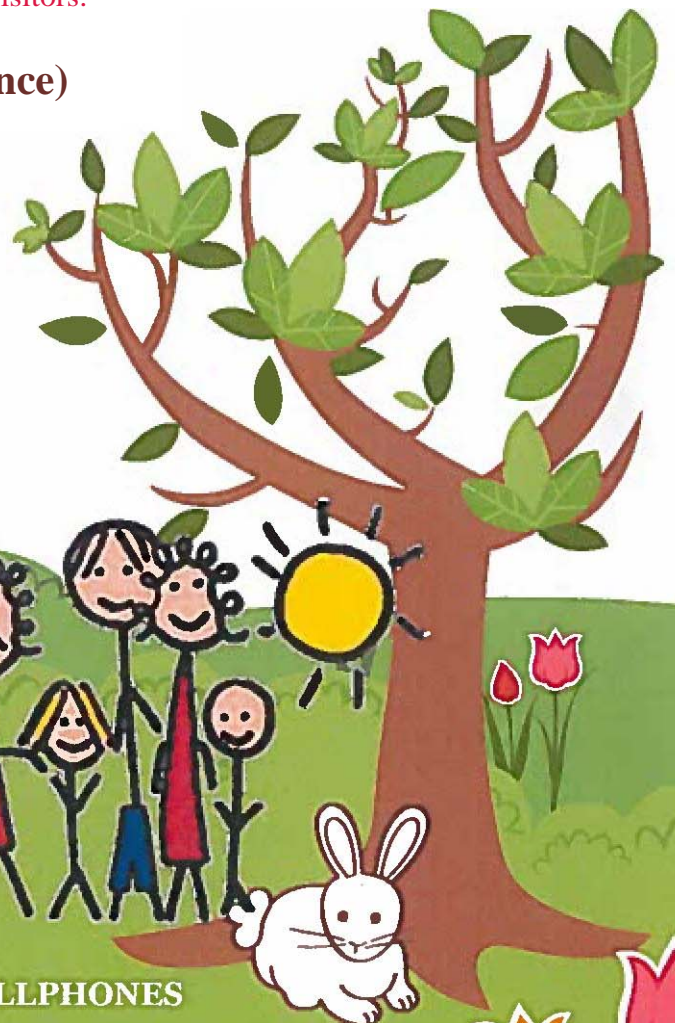


The family program is an opportunity for your family and friends to come visit you. The program is held every Saturday. You will need to turn in the required paperwork weekly to your therapist by FRIDAY (no later). You may have a total of (2) visitors – you are welcome to have a supervised child as one of your visitors.

Where: Cafeteria (South Entrance)

When: Every Saturday

Time: 1:30 PM - 2:55 PM



- NO CELLPHONES
- NO PURSES
- NO BAGS