

COVID THERAPEUTICS

Quick Reference for Prescribers

What therapeutic options are available for COVID positive patients?

Therapeutic	Reduction In hospitalization & death	Route	Treatment Initiation from Symptom Onset	Treatment Duration	Considerations	Preference
Paxlovid (Nirmatrelvir/ Ritonavir) 300mg/100mg po BID x 5days	88%	Oral	Within 5 days	5 days	Patients age 12+ and ≥ 40kg Multiple drug interactions Adjust dosing for renal impairment Not recommended in severe hepatic impairment	Preferred - Tier 1
Remdesivir	87%	IV	Within 7 days	3 days (1-2 hr)	Patients ≥ 3.5kg Renal and hepatic considerations	Preferred - Tier 2
Molnupiravir 200mg 4 tabs po BID x 5 days	30%	Oral	Within 5 days	5 days	Patients age 18+ Not recommended in pregnancy Contraceptive recommendations for males and females.	Alternative - Tier 3 Utilize only when preferred therapies are contraindicated or unavailable.
Bebtelovimab	Clinical trial not powered or designed to determine difference in clinical outcomes	IV	Within 7 days	1 minute	Patients age 12+ and ≥ 40kg	Alternative - Tier 3 Utilize only when preferred therapies are contraindicated or unavailable.

Where should I refer a patient for IV treatments (Remdesivir or Bebtelovimab)?

Check cv.nmhealth.org/treatments for a list of providers. Send a referral. Appointments may be required.

How do I prescribe oral therapeutics?

- Please check cv.nmhealth.org/treatments for a list of pharmacy locations.
- **Ask patients to use the drive-thru.**
- Please include date of symptom onset. It helps ensure the patient receives the medication within the treatment window.

Where can I find up-to-date NIH treatment recommendations for non-hospitalized adults?

www.covid19treatmentguidelines.nih.gov

COVID-19 Drug Interaction tool:

<https://www.covid19-druginteractions.org>

QUESTIONS? EMAIL COVID.THERAPEUTICS@STATE.NM.US

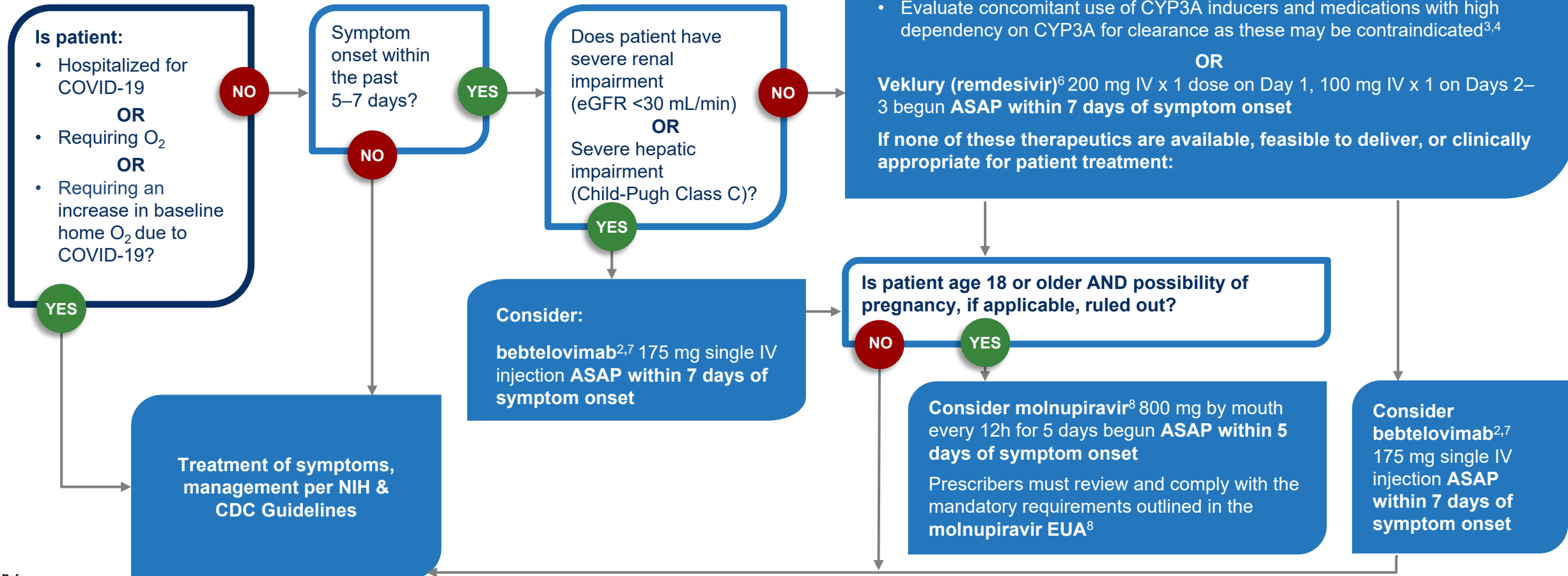
For more information, visit CV.NMHEALTH.ORG and click on the provider information tab



COVID-19 Outpatient Therapeutics

Clinical Decision Aid for Ages 12+

Adult or pediatric patient (ages 12 and older weighing at least 40 kg) with mild to moderate COVID-19 and at high risk for progression to severe disease



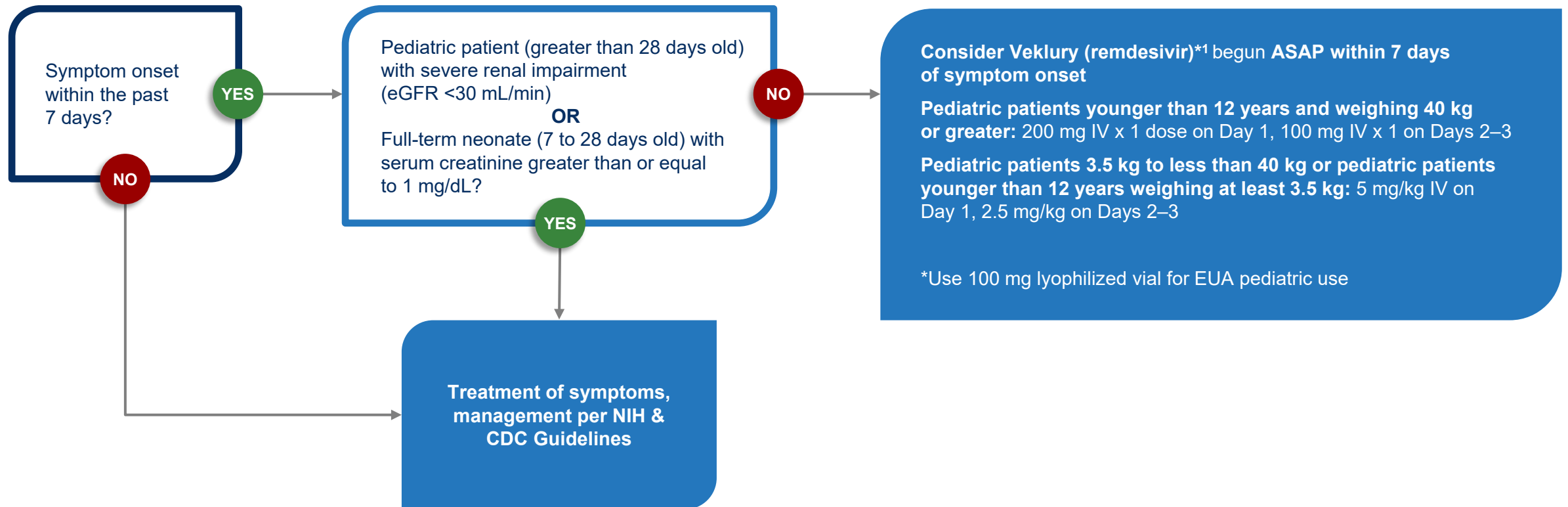
References:

- ¹ NIH's COVID-19 Treatment Guidelines Therapeutic Management of Nonhospitalized Adults With COVID-19. <https://www.covid19treatmentguidelines.nih.gov/therapies/statement-on-therapies-for-high-risk-nonhospitalized-patients/>
- ² NIH's COVID-19 Treatment Guidelines Statement on bebtelovimab https://www.covid19treatmentguidelines.nih.gov/therapies/statement-on-bebtelovimab/?utm_source=site&utm_medium=home&utm_campaign=highlights
- ³ Paxlovid EUA. <https://www.fda.gov/media/155050/download>
- ⁴ NIH's COVID-19 Treatment Guidelines Panel's Statement on Potential Drug-Drug Interactions Between Ritonavir-Boosted Nirmatrelvir (Paxlovid) and Concomitant Medications. <https://www.covid19treatmentguidelines.nih.gov/therapies/statement-on-paxlovid-drug-drug-interactions/>
- ⁵ Sotrovimab EUA. <https://www.fda.gov/media/149534/download>
- ⁶ Veklury (remdesivir) Prescribing Information. https://www.gilead.com/-/media/files/pdfs/medicines/covid-19/veklury/veklury_pi.pdf
- ⁷ Bebtelovimab EUA. <https://www.fda.gov/media/156152/download>
- ⁸ Molnupiravir EUA. <https://www.fda.gov/media/155054/download>



Clinical Decision Aid for Pediatric Patients

Outpatient **3.5 kg to less than 40 kg** or **younger than 12 years of age** **weighing at least 3.5 kg**, with mild to moderate COVID-19 and at high risk for progression to severe disease



Reference:

¹ [Remdesivir EUA](https://www.fda.gov/media/137566/download); <https://www.fda.gov/media/137566/download>.

