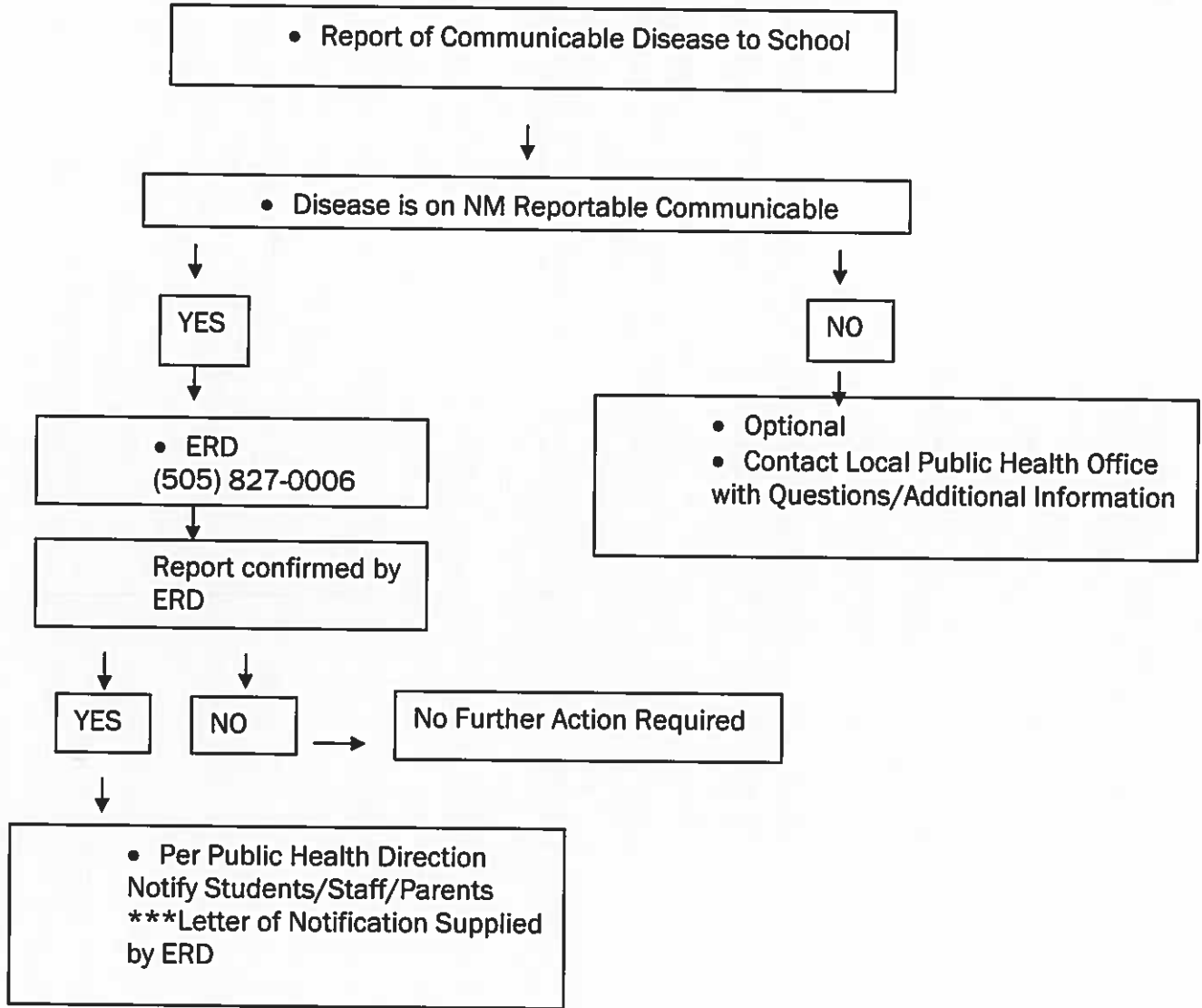


- Notifiable Conditions in New Mexico
- Here's the link to [Notifiable Conditions in New Mexico](#)
- Reportable Communicable Disease Follow-up Algorithm and New Mexico Department of Health Contact List



**NEW MEXICO DEPARTMENT OF HEALTH CONTACT LIST**

- State Epidemiologist and Public Health Hotline: (505) 827-0006
- NM Regional Health Offices:
  - (505) 841-4100 Albuquerque
  - (505) 476-2600 Santa Fe
  - (575) 528-5137 Las Cruces
  - (575) 347-2409 Roswell