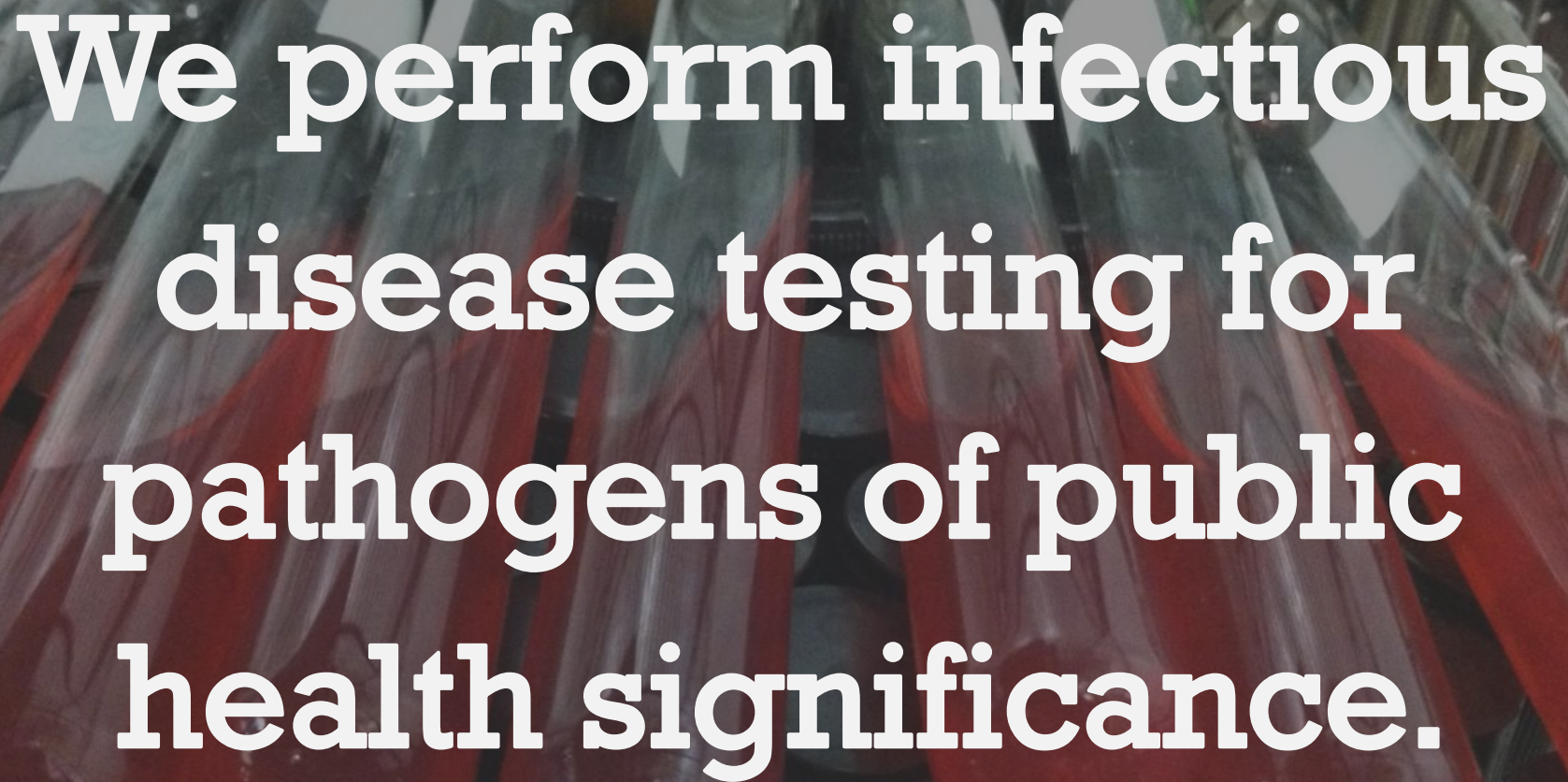
The image shows seven petri dishes arranged in two rows. The top row contains four dishes with labels '0163 D2', '026 52', '045 G2', and '045'. The bottom row contains three dishes with labels '11-A-12', '11-A-12', and '012102'. Each dish contains a bacterial culture on a yellowish agar medium, with various streaking patterns. A semi-transparent blue banner is overlaid across the center of the dishes, containing the text 'A Snapshot of Infectious Disease Testing' in white, bold, sans-serif font.

A Snapshot of Infectious Disease Testing

A rack of test tubes containing red liquid, likely blood, used for infectious disease testing. The text is overlaid on the image.

**We perform infectious
disease testing for
pathogens of public
health significance.**



**We stand as the first line
of defense to protect the
community against
infectious diseases.**

Not just clinical testing...

Regulatory

Animal

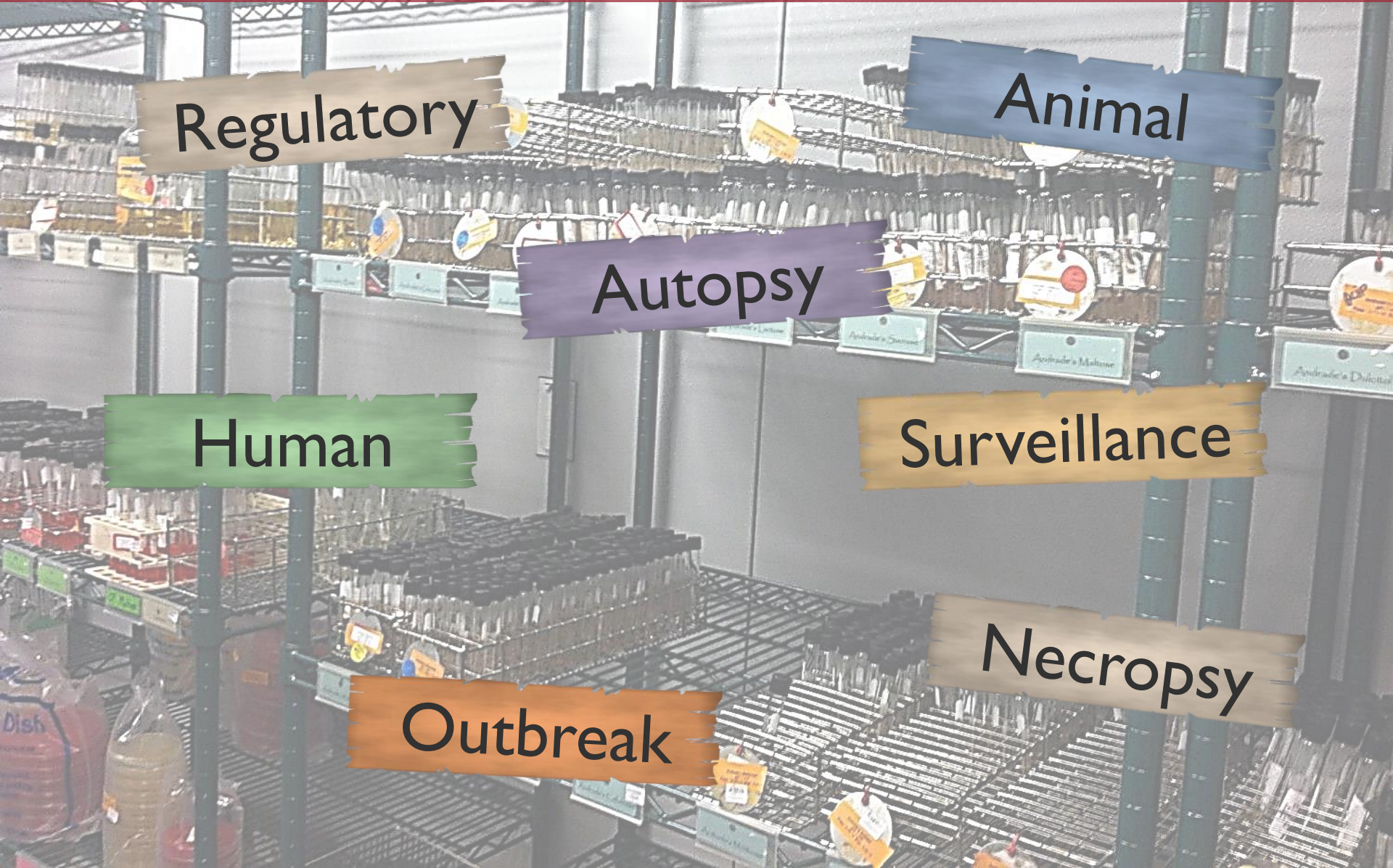
Autopsy

Human

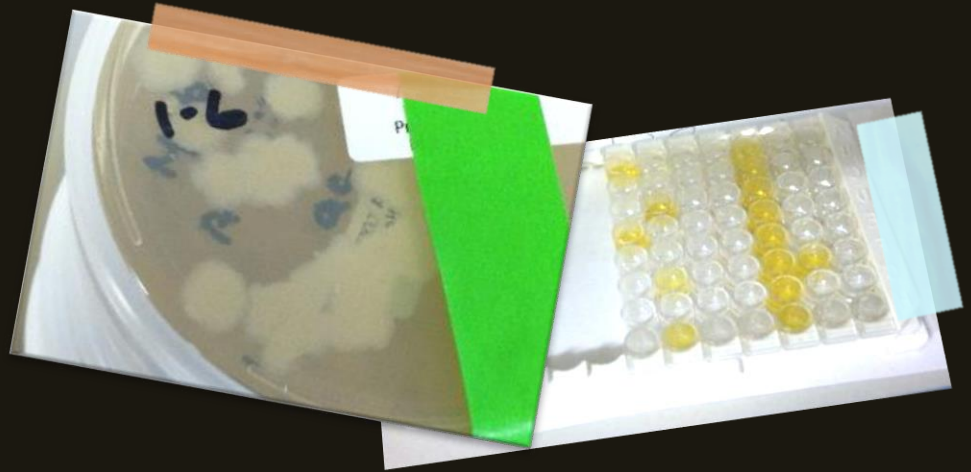
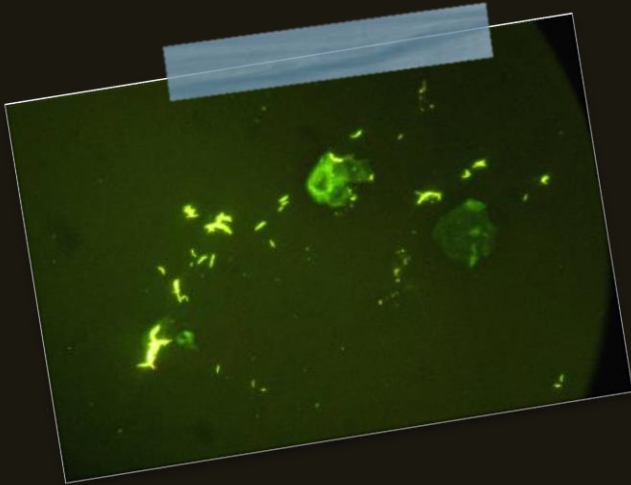
Surveillance

Outbreak

Necropsy

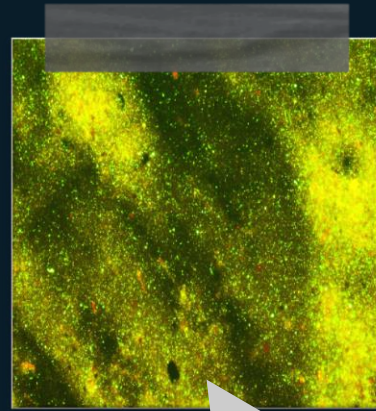
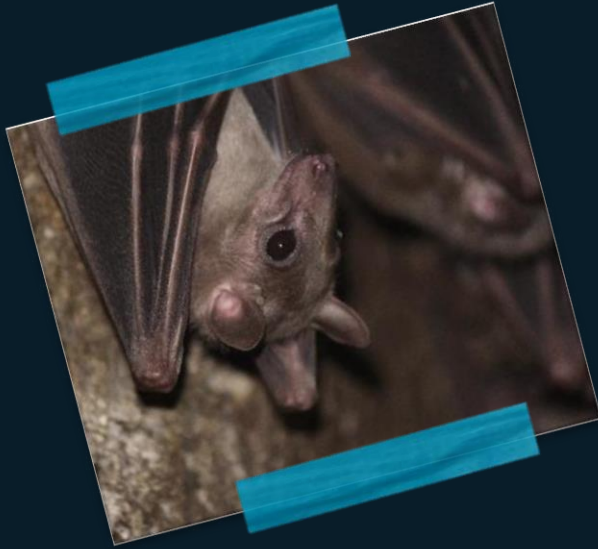


Tuberculosis

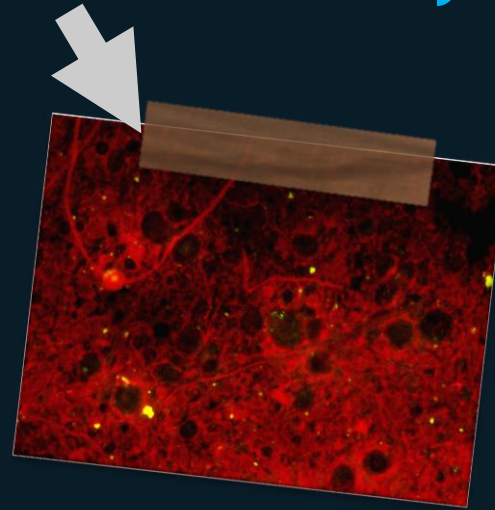


From the case files...
In 2011, we identified two morphologically distinct, multi-drug resistant strains of *Mycobacterium tuberculosis* from the trunk washings of an elephant at our zoo.

Rabies



{ Brain tissue smears
stained for rabies virus }



Bats

Fox

Skunk

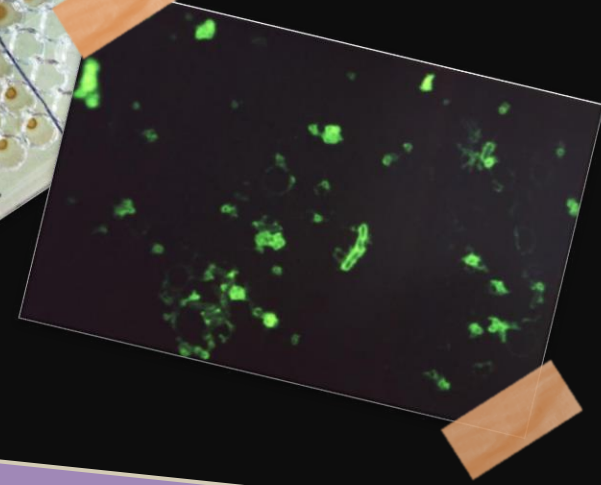
Coyote

From the case files...

In 2010, we detected the rabies virus in brain tissue from a horse and a bobcat.

Plague

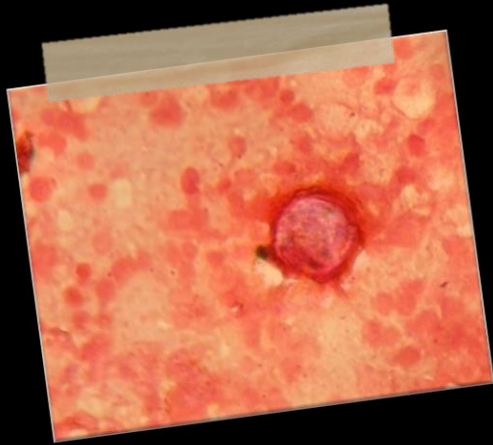
From the case files...
Yersinia pestis, the bacterium that causes plague, was identified from autopsy samples from a boy that was treated for strep throat. His sibling and grandfather, who were also sick, was successfully treated for plague.



From the case files...
June 2014 – necropsy material from a mountain lion in an animal sanctuary in Santa Fe county tested positive for plague
...2 weeks later a coati from the same sanctuary tested positive.

Fungi

Blastomyces



Coccidioides

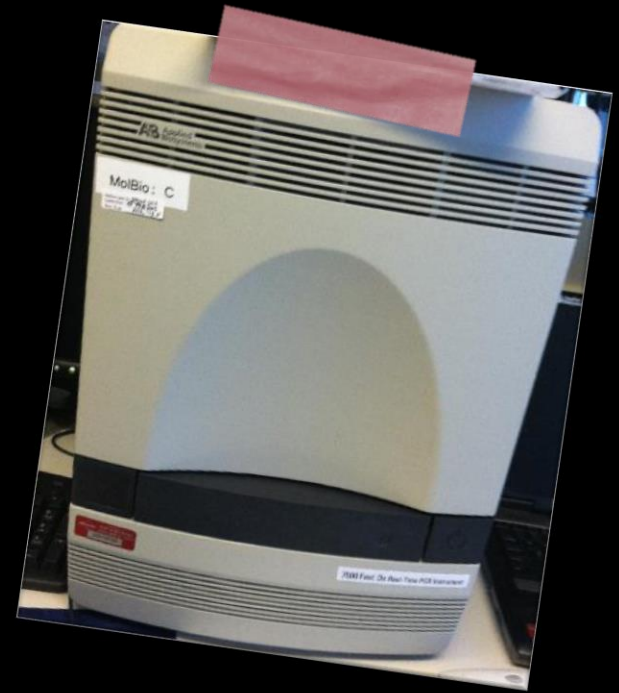


Histoplasma

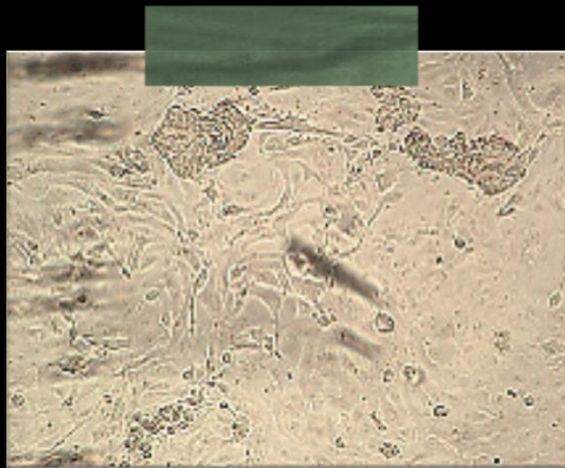
Dermatophytes

Vaccine preventable diseases

Pertussis



Measles



{ Cells damaged by measles virus }

S. pneumoniae



Mumps

N. meningitidis

Reference and Specialized Testing

Notifiable
conditions

Serotyping

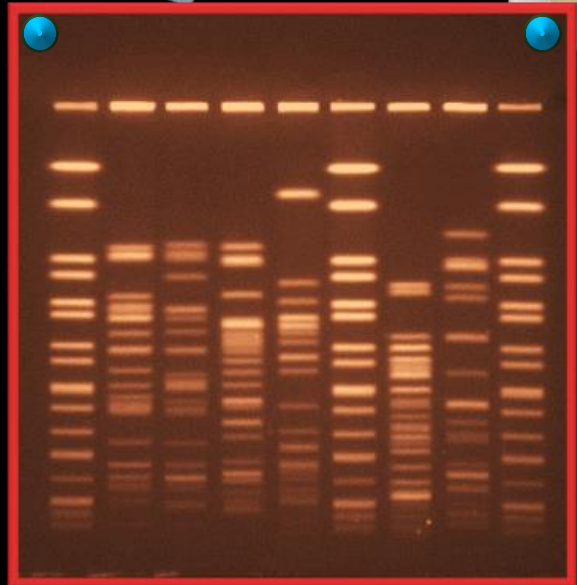
Misidentifications

Confirmatory
testing

...and more



What's in your food?



From the case files...

2006 - *E.coli* O157:H7 in spinach.

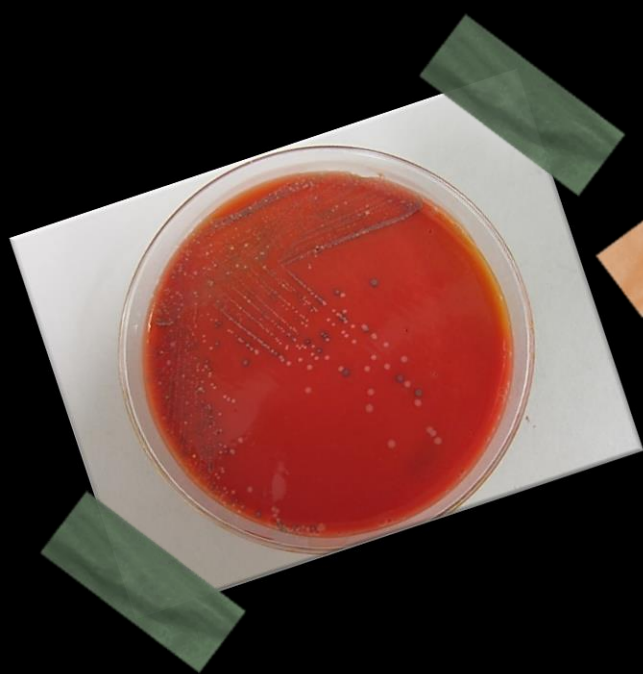
2007 and 2012 –*Salmonella* in peanut butter.

2008 - *Salmonella* in tomato and jalapeño.

2011 - *Listeria monocytogenes* from cantaloupe.

2012 - *Clostridium perfringens* from two separate outbreaks; one involving a barbecue lunch at Elk's Lodge and the other from a local restaurant.

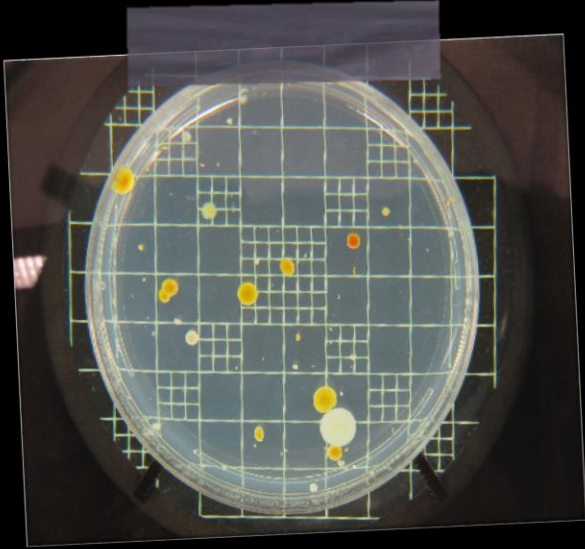




Listeria monocytogenes
detected in raw pet food
results in an FDA recall



What's in your dairy?



We've identified:

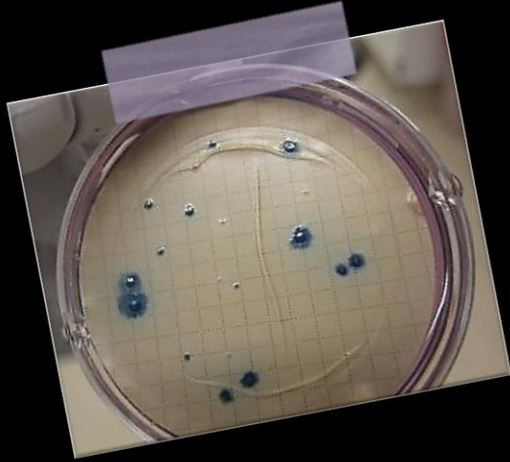
Listeria monocytogenes in some Mexican soft cheese.

E. coli O157:H7 in cheese from Costco

...both associated with outbreaks



What's in your water?

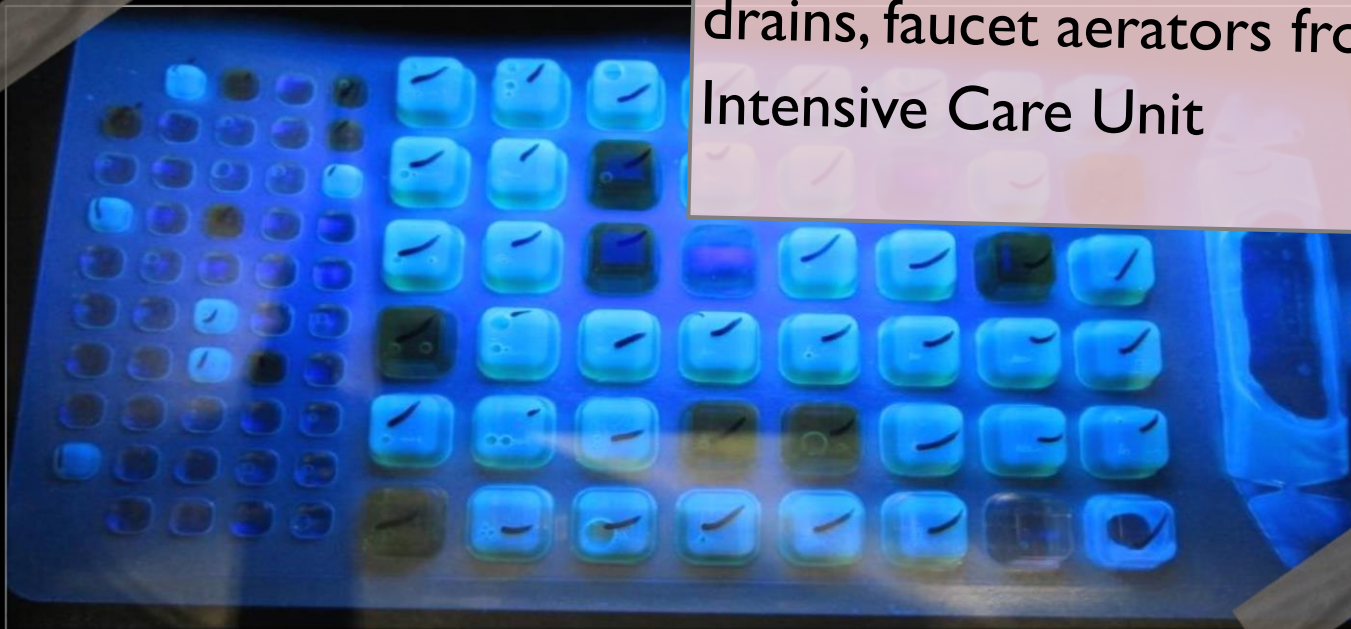


We've isolated:

Legionella from a hotel spa

Norovirus from a prison shower stall

Pseudomonas aeruginosa from sinks,
drains, faucet aerators from a Neonatal
Intensive Care Unit



Influenza

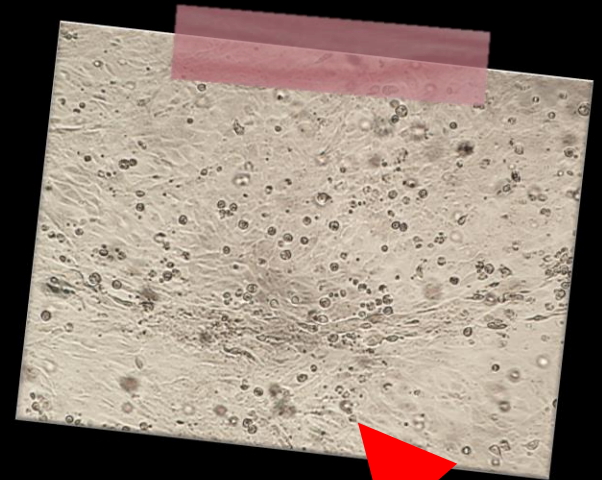


H3N2v "swine" Flu



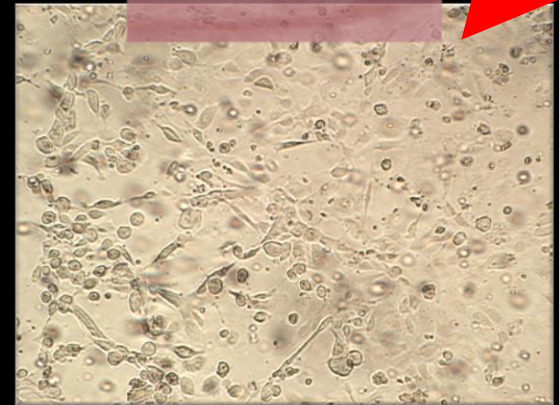
H5N1 Avian Flu

H1N1



{ Cells damaged by influenza virus }

Influenza B



Globe-trotting pathogens

through travel



Chikungunya

Hepatitis A

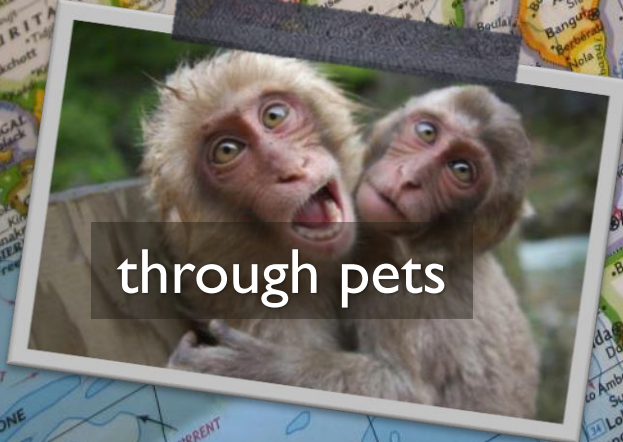
through food



Ebola

West Nile virus

through pets



through vectors



Dengue

Agents of Bioterrorism



Anthrax

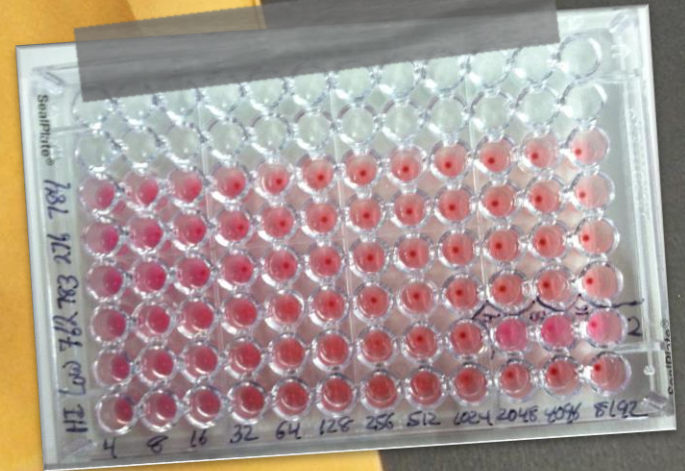
Brucella

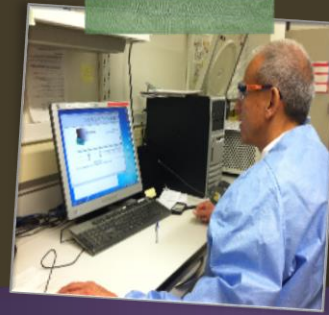


“white powders”

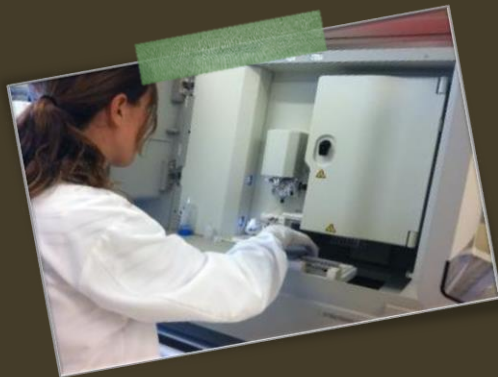
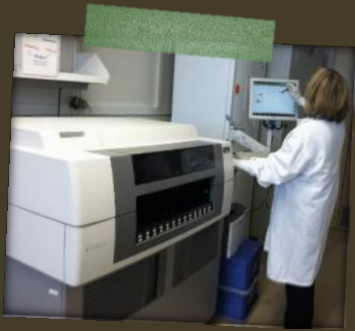


Tularemia





In action...

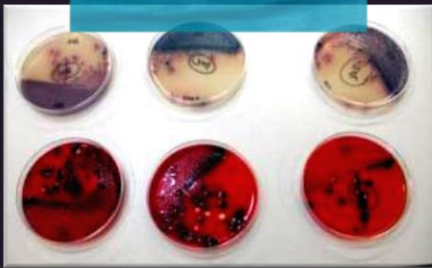
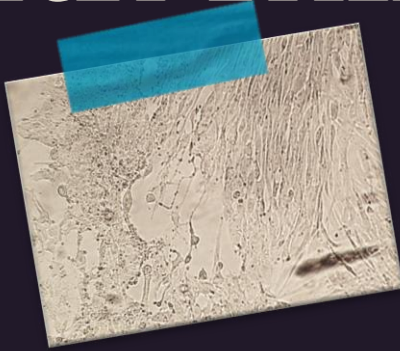


With mixed technologies

BIOCHEMICALS



CULTURE



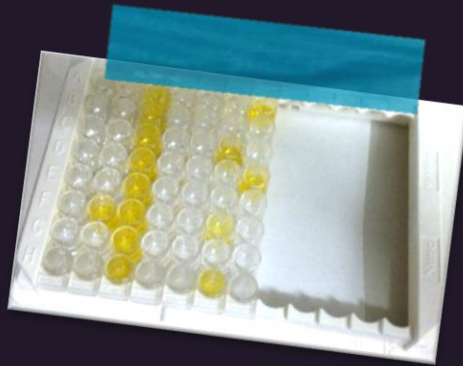
PCR



CHROMATOGRAPHY



SEROLOGY



MASS SPEC

SEQUENCING



Want more information?

Please visit our Directory of Services

at

<http://nmhealth.org/publication/view/general/1496/>

