

2007
HOSPITAL INPATIENT
DISCHARGE DATA

PRINTED OCTOBER 2008



NEW MEXICO
HEALTH POLICY COMMISSION

The New Mexico Health Policy Commission

Governor Bill Richardson

Commissioners

Frank Hesse, M.D., Chairman
Seferino Montano, Vice-Chairman
Dawn Brooks, MBA-HC
Karen Kotch, P.A.
Eric Kraska, M.D.
Kim Maxwell
Moises Morales
Miles Nelson, M.D.
Alicia Roman

Management

Liz Stefanics, Ph.D., Director
Kristine “Kooch” Jacobus, MA, Deputy Director
TC Shaffer, MA, Program Manager
Terry Reusser, IT Manager
Peggy Schummers, CFO/HR Manager

Staff

Carlos Beserra, Special Projects Coordinator
Marietta Esquibel, IT Database Administrator
Dan Garcia, MBA, Management Analyst
Lisa Marie Gomez, Management Analyst
Reina Guillen, Management Analyst
Tom Kauley, Management Analyst
Elisha Leyba-Tercero, Economist
Pat Mente, IT Database Administrator
Tyson Pollman, IT Database Administrator
Jeffrey Repichowski, (HSD) Chief Economist

Staff Author: Tom Kauley

TABLE OF CONTENTS

INTRODUCTION	1
2007 NEW MEXICO HEALTH AND HUMAN SERVICES REGIONS	3
NEW MEXICO HOSPITALS REPORTING HIDD DATA IN 2007	4
MAP OF NEW MEXICO LICENSED GENERAL HOSPITALS REPORTING FOR 2007	5
MAP OF NEW MEXICO LICENSED SPECIALTY HOSPITALS REPORTING FOR 2007	6
OVERALL HOSPITAL DISCHARGES	7
Percent Distribution of Hospital Discharges by Hospital Stay and Age	7
Percent Distribution of First-listed Procedures for Hospitalized Patients By Sex	9
Number, Rate and Average Length of Stay for Discharges by Age, Region, and Sex	11
Hospital Discharge Rates by Age and Sex, NM (2007) and U.S. (2006)	13
Number of Discharges by First-listed Diagnosis and Age	15
Number of Discharges by First-listed Diagnosis and Sex	17
Number of Discharges by First-listed Diagnosis and Region	19
Hospital Discharge Rates per 10,000 Population by First-listed Diagnosis, NM (2007) and U.S. (2006)	21
Hospital Discharge Rates per 10,000 Population by First-listed Diagnosis and Age	23
Hospital Discharge Rates per 10,000 Population by First-listed Diagnosis and Sex	25
Hospital Discharge Rates per 10,000 Population by First-listed Diagnosis And Region	27
Number of First-listed Procedures by Procedure Category and Age	29
Number of First-listed Procedures by Procedure Category and Sex	31
Number of First-listed Procedures by Procedure Category and Region	33
SPECIFIC CATEGORIES OF DISEASE AND INJURY	35
ASTHMA	35
Number, Rate, and Average Length of Stay for Asthma Inpatient Hospital Discharges, First-listed Diagnosis, by Age, Sex, and Region	36
Number, Rate, and Average Length of Stay for Asthma Inpatient Hospital Discharges, All-listed Diagnoses, by Age, Sex, and Region.	38

DIABETES	39
Number, Rate, and Average Length of Stay for Diabetes Inpatient Hospital Discharges, First-listed Diagnosis, by Age, Sex, and Region	40
Number, Rate, and Average Length of Stay for Diabetes Inpatient Hospital Discharges, All-listed Diagnoses, by Age, Sex, and Region	42
INFLUENZA AND PNEUMONIA	43
Influenza-related Inpatient Discharges by Month, New Mexico Residents, January 2004 – December 2007	44
Numbers, Rates, and Average Length of Stay of Pneumonia or Influenza Inpatient Hospital Discharges, First-listed Diagnosis by Age, Sex, and Region	46
INJURY	47
Number and Rate for Inpatient Hospital Discharges of Injury Conditions by Age, Sex, and Region	49
Discharge Status by Injury Type	52
Average Length of Stay by Injury Type	52
MENTAL DISORDERS	53
Number and Rate of Inpatient Hospital Discharges with Mental Disorders by Sex and All-listed Diagnoses	54
Number and Rate of Inpatient Hospital Discharges with Mental Disorders by Age and All-listed Diagnoses	56

APPENDIX TABLES

- Appendix Table 1: Number of Discharges by First-Listed Diagnosis and Age,
New Mexico, 2007 – Expanded Listing

- Appendix Table 2: Number of Discharges by First-Listed Diagnosis and Sex,
New Mexico, 2007 – Expanded Listing

- Appendix Table 3: Number of Discharges by First-Listed Diagnosis and Region,
New Mexico, 2007 – Expanded Listing

- Appendix Table 4: Rate of Discharges by First-Listed Diagnosis, New Mexico (2007)
and U.S. (2006) – Expanded Listing

- Appendix Table 5: Rate of Discharges by First-Listed Diagnosis and Age,
New Mexico, 2007 – Expanded Listing

- Appendix Table 6: Rate of Discharges by First-Listed Diagnosis and Sex,
New Mexico, 2007 – Expanded Listing

- Appendix Table 7: Rate of Discharges by First-Listed Diagnosis and Region, New Mexico, 2007 – Expanded Listing
- Appendix Table 8: Average Length of Stay by First-Listed Diagnosis and Age, New Mexico, 2007 – Expanded Listing
- Appendix Table 9: Average Length of Stay by First-Listed Diagnosis and Sex, New Mexico, 2007 – Expanded Listing
- Appendix Table 10: Average Length of Stay by First-Listed Diagnosis and Region, New Mexico, 2007 – Expanded Listing

INTRODUCTION

The New Mexico Health Information System (HIS) administered by the New Mexico Health Policy Commission (HPC) was established in 1989 pursuant to the Health Information System Act Section 24-14A-1 thru 10 NMSA 1978. The purpose of the HIS is to collect, analyze, and disseminate health data and information for use by public and private entities in health planning and policy development. The Commission by statute, gives the highest priority to the collection of data to support informed health care decision-making and purchases throughout the state.

Pursuant to the HIS Act, the HPC maintains the Hospital Inpatient Discharge Database (HIDD) and the Geographic Access Data System (GADS). The HIDD has been revised and refined several times since 1990 to include additional data to meet the above mentioned statutory purposes.

This report is based on the data obtained from the HIDD. General and specialty hospitals in the State of New Mexico are annually required to report HIDD data. In 2007, 36 general and 14 specialty hospitals reported HIDD data. The state cannot obtain data from federal facilities. Therefore, data from Indian Health Service facilities, military hospitals and the Veterans Administration Hospital are excluded from this report. Availability and inclusion of data from federal facilities would provide more complete information for planning and policy purposes.

The 2007 HIDD Report has been produced through the joint efforts of the HPC and the New Mexico Department of Health's epidemiologists. With the issuance of this report, a new format has been established to better conform with standards established by the Centers for Disease Control and Prevention, National Center for Health Statistics. New Mexico's hospital discharge data will be available in report formats that can be compared to annual National Hospital Discharge Survey (NHDS) Reports. Diagnoses and procedures presented are coded using the *International Classification of Diseases, Ninth Revision, Clinical Modification*.

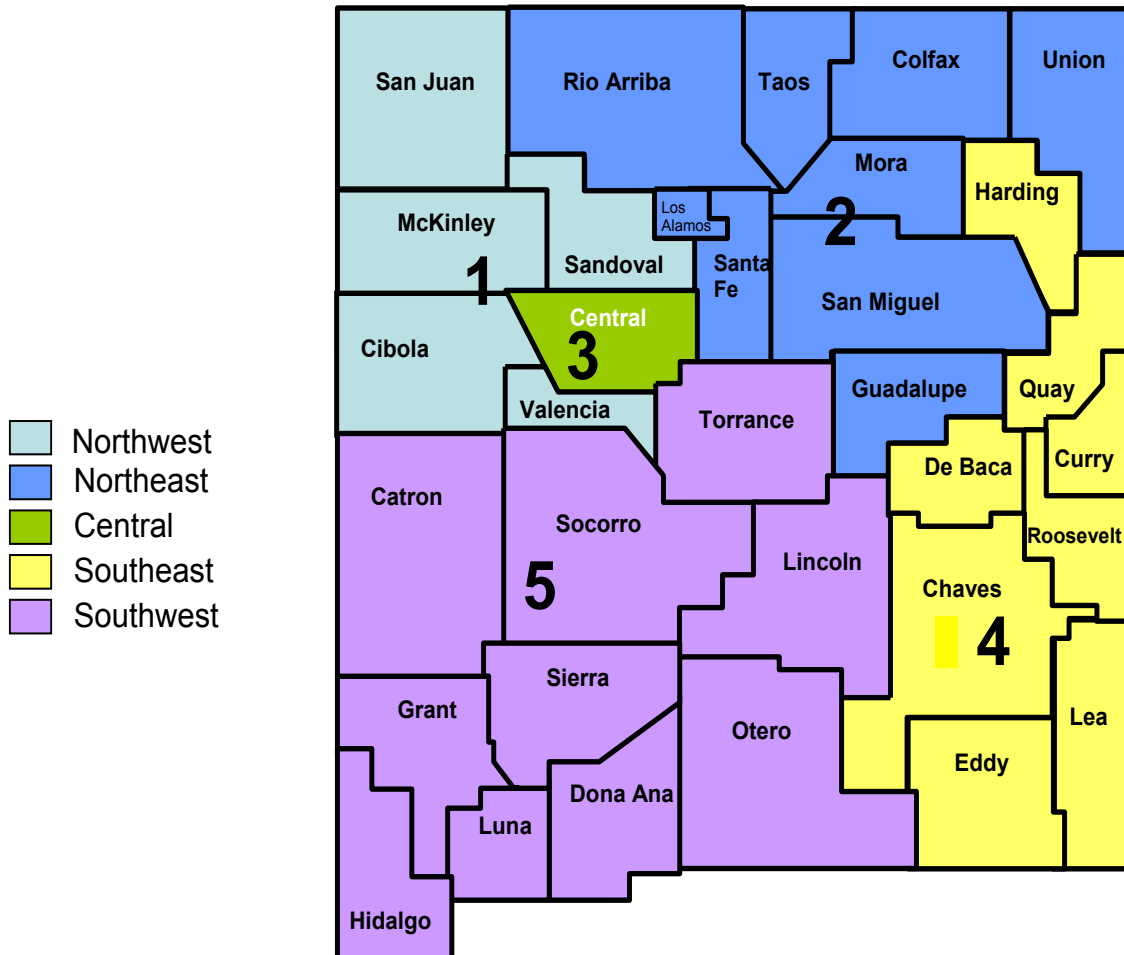
An inpatient discharge occurs when a patient is admitted overnight to a hospital and leaves that hospital. Thus an individual who is transferred from hospital A to hospital B would be included in the discharges from hospital A with a second discharge from hospital B. In 2007, the 50 non-federal hospitals reported a total of 218,083 discharges, of which 170,434 (excluding newborns) were New Mexico residents. Discharges of newborns, out-of-state residents, and discharges with unknown ZIP codes, gender, or principal diagnosis are not included in this report.

DISCLAIMER

This report is intended as a reference document for researchers and planners and does not include interpretation or hypothesis by the New Mexico Health Policy Commission regarding the meaning of the data. Although data is verified with the submitting hospital, all data and information presented in this report are as submitted. The data in this report should be interpreted based on the limits discussed above. The original data is the responsibility of the submitting provider, and the New Mexico Health Policy Commission assumes no responsibility for any use made of or conclusions drawn from the data.

2007 NEW MEXICO HEALTH AND HUMAN SERVICES REGIONS

Many of the tables on the following pages present data by age, sex, and Department of Health (DOH) regions. A map of DOH regions is provided below.

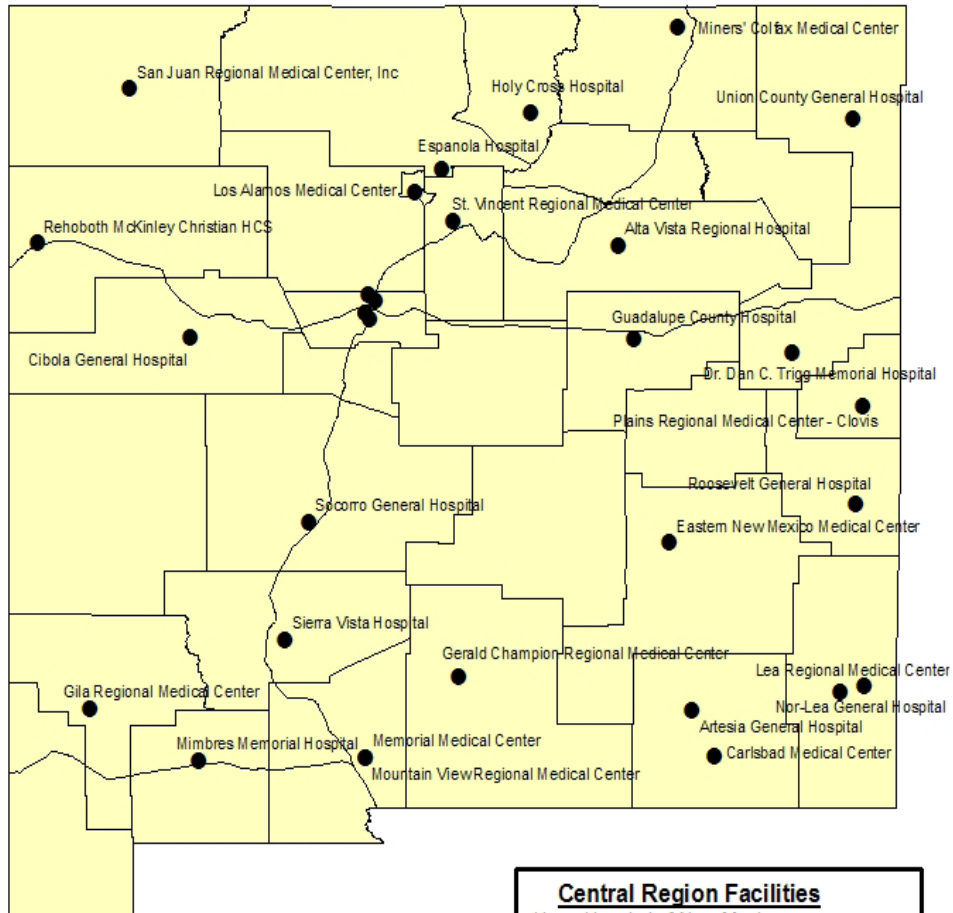


New Mexico Hospitals Reporting HIDD Data in 2007*

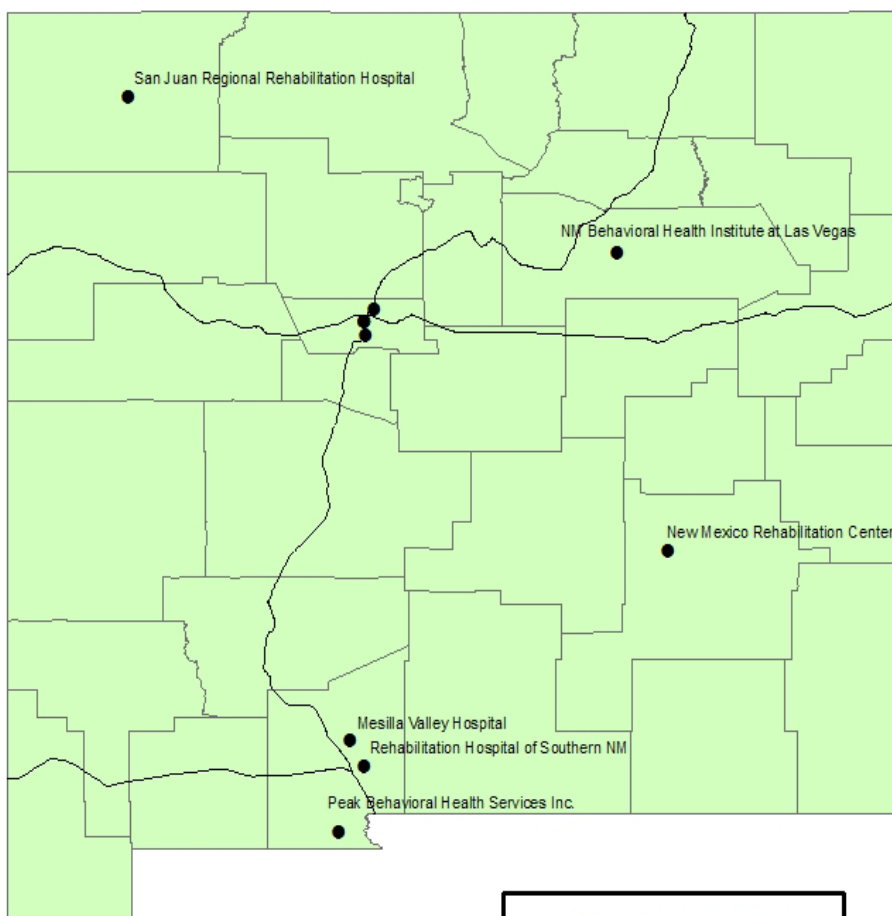
General Hospitals	Specialty Hospitals
Alta Vista Regional Hospital	HealthSouth Rehabilitation Hospital
Artesia General Hospital	Kindred Hospital – Albuquerque
Carlsbad Medical Center	Lovelace Rehabilitation Hospital
Cibola General Hospital	Mesilla Valley Hospital
Dr. Dan Trigg Memorial Hospital	NM Behavioral Health Institute of Las Vegas
Eastern New Mexico Medical Center	NM Rehabilitation Center
Espanola Hospital	Peak Behavioral Health Services, Inc.
Gerald Champion Regional Medical Center	Rehabilitation Hospital of Southern NM
Gila Regional Medical Center	San Juan Regional Rehabilitation Hospital
Guadalupe County Hospital	Specialty Hospital of Albuquerque
Heart Hospital of New Mexico	Turquoise Lodge
Holy Cross Hospital	UNM Children’s Hospital
Lea Regional Medical Center	UNM HSC Carrie Tingley Hospital
Lincoln County Medical Center	UNM Psychiatric Hospital
Los Alamos Medical Center	
Lovelace Medical Center – Downtown	
Lovelace Medical Center – Gibson	
Lovelace Westside Hospital	
Lovelace Women’s Hospital	All hospitals are listed as reported in 2007.
Memorial Medical Center	
Mimbres Memorial Hospital	
Miners’ Colfax Medical Center	
Mountain View Regional Medical Center	
Nor-Lea General Hospital	
Plains Regional Medical Center - Clovis	
Presbyterian Hospital	
Presbyterian Kaseman Hospital	
Presbyterian Rio Rancho Emergency Center	
Rehoboth McKinley Christian Health Care Services	
Roosevelt General Hospital	
San Juan Regional Medical Center, Inc.	
Sierra Vista Hospital	
Socorro General Hospital	
St. Vincent Regional Medical Center	
Union County General Hospital	
UNM Hospital	

*Does not include federal hospitals.

New Mexico Licensed General Hospitals Reporting for 2007



NM Licensed Specialty Hospitals Reporting for 2007



- Central Region Facilities**
- HealthSouth Rehabilitation Hospital
 - Kindred Hospital
 - Lovelace Rehabilitation Hospital
 - Specialty Hospital of Albuquerque
 - Turquoise Lodge
 - UNM Childrens Hospital
 - UNM HSC Carrie Tingley Hospital
 - UNM Psychiatric Hospital

OVERALL HOSPITAL DISCHARGES

The Overall Hospital Discharges section of this report provides hospital discharge data by age, sex and DOH region. Data tables and charts provide information on the number of discharges, hospital discharge rates and average length of stay.

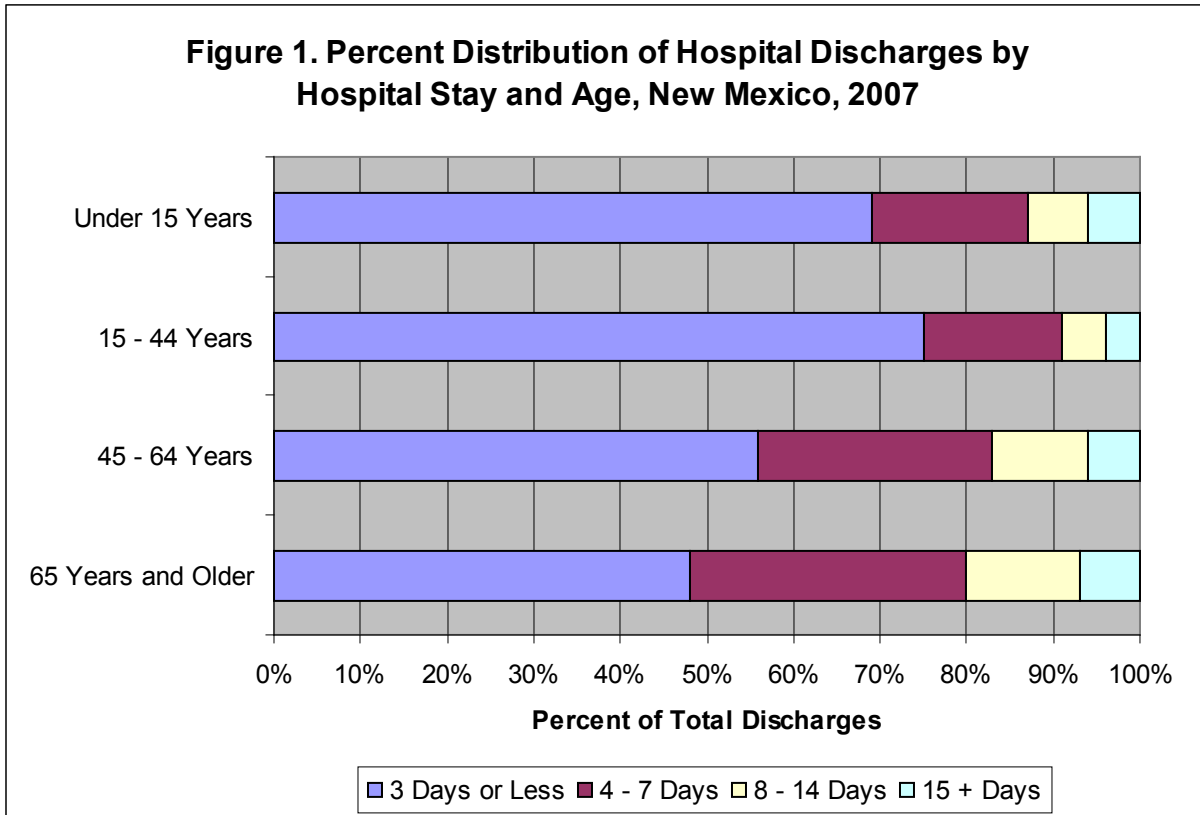
This section of the report includes a series of tables that provide hospital discharge data for the first-listed diagnosis. The first-listed diagnosis is the first recorded final diagnosis on the patient's medical record. The final three tables in this section provide hospital discharge data for the first-listed procedure. The first-listed procedure is the first recorded procedure on the patient's medical record.

Percent Distribution of Hospital Discharges by Hospital Stay and Age, New Mexico, 2007

The data in Figure 1 provides information on the percent distribution of hospital discharges by hospital stay and age as reported by New Mexico hospitals in 2007. Data highlights are provided as follows:

- Sixty nine percent of patients under 15 years of age, 75% of patients 15-44 years of age, 56% of patients 45-64 years of age and 48% of patients 65 years and older were hospitalized for less than 3 days;
- Eighteen percent of patients under 15 years of age, 16% of patients 15-44 years of age, 27% of patients 45-64 years of age and 32% of patients 65 years and older were hospitalized for 4 to 7 days;
- Seven percent of patients under 15 years of age, 5% of patients 15-44 years of age, 11% of patients 45-64 years of age and 13% of patients 65 years and older were hospitalized for 8 to 14 days; and

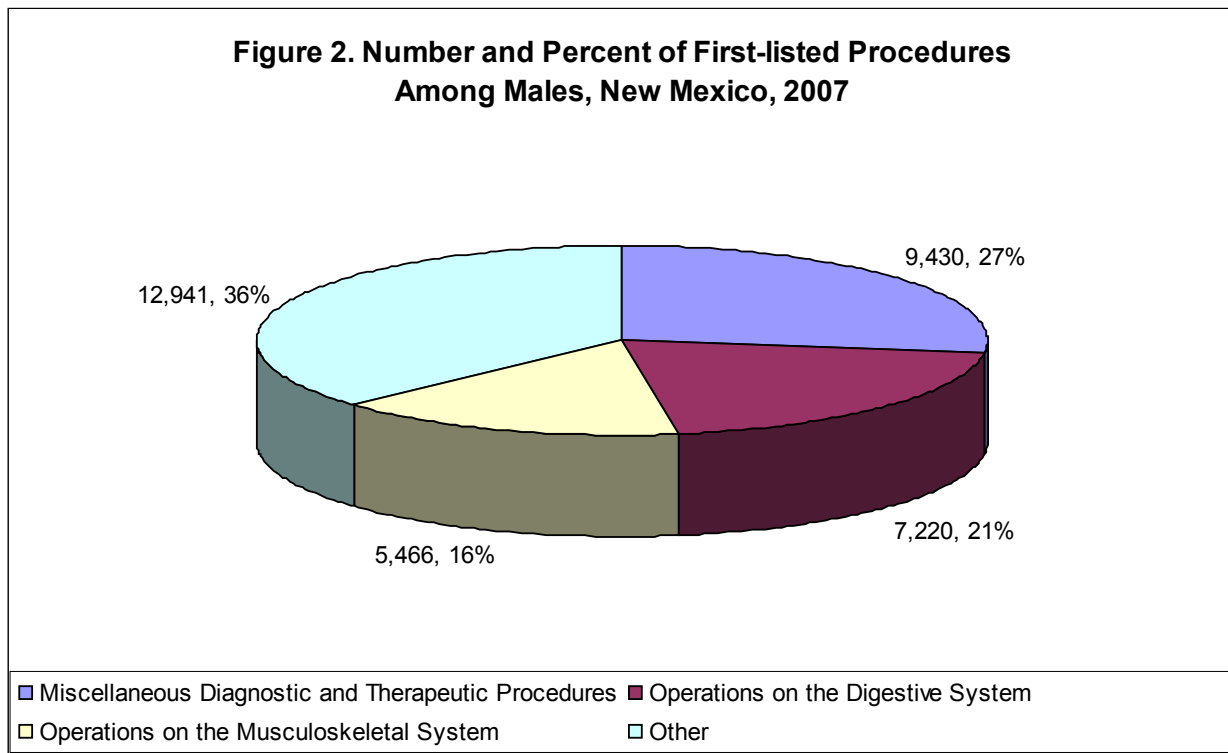
- Six percent of patients under 15 years of age, 4% of patients 15-44 years of age, 6% of patients 45-64 years of age and 7% of patients 65 years and older were hospitalized for 15 days or more.



Percent Distribution of First-listed Procedures for Hospitalized Patients by Sex, New Mexico, 2007

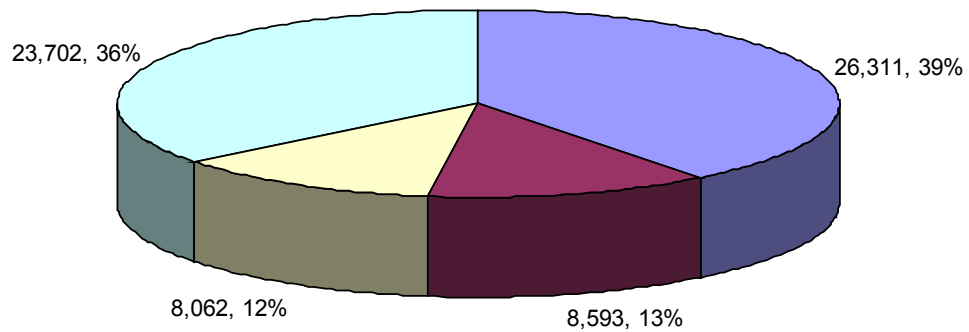
The data in figures 2 and 3 provide information on the percent distribution of the first-listed procedures for hospitalized patients by sex as reported by New Mexico hospitals in 2007. Data highlights are provided as follows:

- Three of the top first-listed procedures performed on males were:
 - Miscellaneous Diagnostic and Therapeutic Procedures;
 - Operations on the Digestive System; and
 - Operations on the Musculoskeletal System.



- Three of the top first-listed procedures performed on females were:
 - Obstetrical Procedures;
 - Miscellaneous Diagnostic and Therapeutic Procedures; and
 - Operations on the Digestive System.

Figure 3. Number and Percent of First-listed Procedures Among Females, New Mexico, 2007



■ Obstetrical Procedures	■ Miscellaneous Diagnostic and Therapeutic Procedures
■ Operations on the Digestive System	■ Other

Number, Rate and Average Length of Stay for Discharges by Age, Region and Sex, New Mexico, 2007

The data in Table 1 provides information on the number, rate and average length of stay for discharges by age, region and sex as reported by New Mexico hospitals in 2007.

Data highlights are provided as follows:

- In 2007, 170,434 inpatients were discharged from non-federal general and specialty hospitals in New Mexico. Approximately 62% of the inpatients were female;
- Persons aged 65 years and older comprised 33% of all inpatients, those 45-64 years of age comprised 24%, those 15-44 years of age comprised 36%, and those under 15 years of age comprised 7% of all inpatients;
- Among males, inpatients 15-44 years of age had the longest average length of stay (7.7 days) while inpatients aged 65 years and older had the longest average length of stay among females (5.7 days); and
- The highest discharge rate was 988.8 per 10,000 in the Southeast Region of the state. The lowest discharge rate was 790.0 per 10,000 in the Northwest Region. The average length of stay ranged from 4.3 days in the Southeast Region to 5.9 days in the Northeast Region.

**Table 1. Number, Rate and Average Length of Stay
for Discharges by Age, Region and Sex, New Mexico, 2007**

Number of Discharges			
Age Group	Total	Males	Females
All Ages	170,434	65,618	104,816
< 15 Years	12,473	6,993	5,480
15 - 44 Years	61,178	14,315	46,863
45 - 64 Years	41,098	19,674	21,424
65 Years and Over	55,685	24,636	31,049
Region	Total	Males	Female
Northwest Region	31,051	12,362	18,689
Northeast Region	24,290	9,778	14,512
Central Region	52,816	19,388	33,428
Southeast Region	25,610	9,441	16,169
Southwest Region	36,667	14,649	22,018

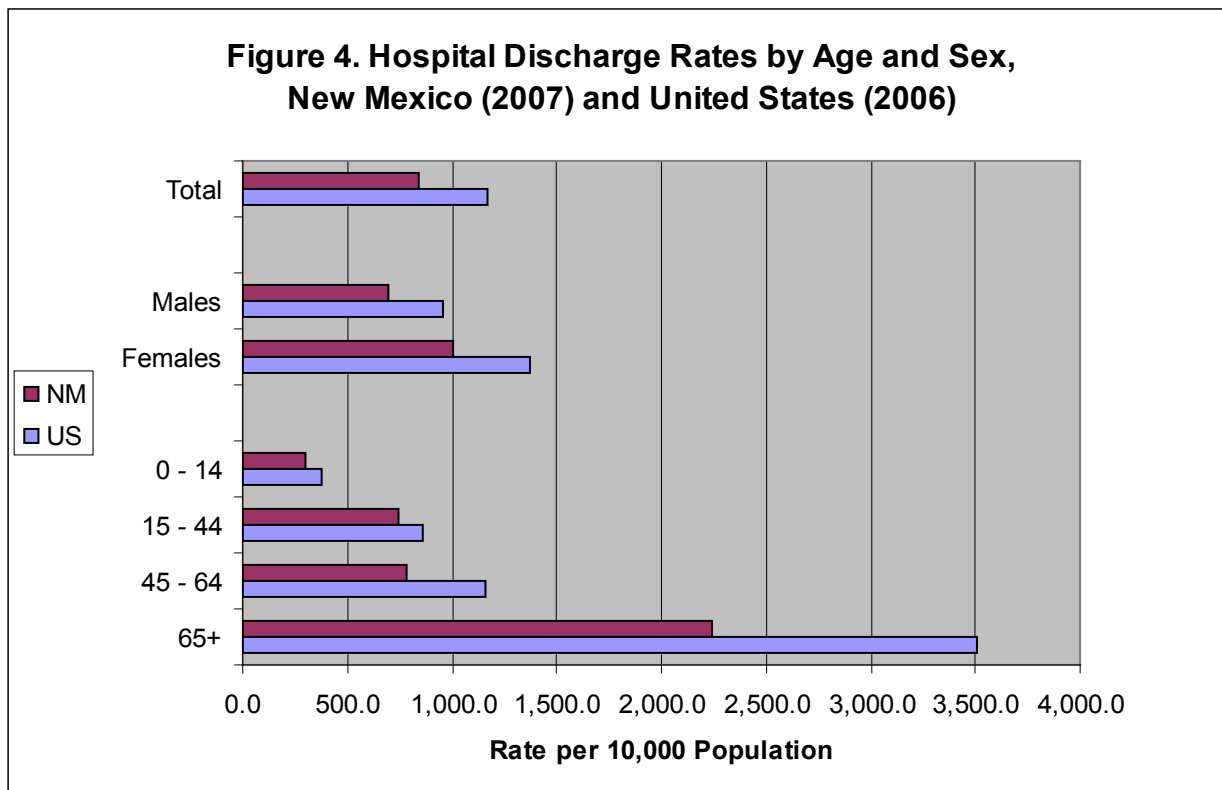
**Table 1 (continued). Number, Rate and Average Length of Stay
for Discharges by Age, Region and Sex, New Mexico, 2007**

Rates of Discharge			
Age Group	Total	Males	Females
All Ages	845.4	691.9	1,004.9
< 15 Years	303.4	335.1	270.8
15 - 44 Years	740.9	343.4	1,146.3
45 - 64 Years	781.2	773.6	788.3
65 Years and Over	2,246.0	2,259.8	2,235.2
Rates of Discharge (Continued)			
Region	Total	Males	Females
Northwest Region	790.0	676.2	914.7
Northeast Region	786.1	669.3	934.4
Central Region	840.0	673.5	1,018.8
Southeast Region	988.8	764.2	1,241.9
Southwest Region	867.1	718.6	1,053.7
Average Length of Stay			
Age Group	Total	Males	Females
All Ages	5.2	6.2	4.5
0 - 15 Years	5.7	6.0	5.4
15 - 44 Years	4.4	7.7	3.4
45 - 64 Years	5.5	5.9	5.2
65 Years and Over	5.7	5.6	5.7
Region	Total	Males	Females
All Regions	5.2	6.2	4.5
Northwest Region	5.3	6.3	4.7
Northeast Region	5.9	6.8	5.3
Central Region	5.2	6.4	4.6
Southeast Region	4.3	5.3	3.7
Southwest Region	5.1	6.1	4.5

Hospital Discharge Rates by Age and Sex, New Mexico (2007) and United States (2006)

The data in Figure 4 provides information on the overall hospital discharge rates by age and sex as reported by New Mexico hospitals in 2007. The figure also provides U.S. hospital discharge rates as provided in the 2006 National Hospital Discharge Survey for comparison purposes. Data highlights are provided as follows:

- The total hospital discharge rate per 10,000 was 845.4 for New Mexico (2007) and 1,168.7 for the U.S. (2006);
- The U.S. discharge rate per 10,000 was lower for the New Mexico male population (691.9) compared to the U.S. male population (954.9). The discharge rate per 10,000 was lower for New Mexico's female population (1,004.9) compared to the U.S. female population (1,375.3); and
- The largest age-specific difference was among those aged 65 years and older - 2,246.0 per 10,000 for New Mexico and 3,507.9 per 10,000 for the U.S.



*Except for age-specific rates, all rates are age-adjusted to the 2000 U.S. Standard Population.

Number of Discharges by First-listed Diagnosis and Age, New Mexico, 2007

The data in Table 2 provides information on the number of discharges by age and first-listed diagnosis as reported by New Mexico hospitals in 2007. Data highlights are provided as follows:

- The top five reasons for hospitalization for all ages in New Mexico during 2007 were Supplementary Classifications (includes Females with Deliveries), Diseases of the Circulatory System, Diseases of the Digestive System, Diseases of the Respiratory System, and Injury and Poisoning;
- The top three reasons for hospitalization in the under 15 age group were Diseases of the Respiratory System, Certain Conditions Originating in the Perinatal Period, and Diseases of the Digestive System;
- The top three reasons for hospitalization in the 15-44 age group were Supplementary Classifications (includes Females with Deliveries), Mental Disorders, and Complications of Pregnancy, Childbirth and the Puerperium;
- The top three reasons for hospitalization in the 45-64 age group were Diseases of the Circulatory System, Diseases of the Digestive System, and Mental Disorders; and
- The top three reasons for hospitalization in the 65 and older age group were Diseases of the Circulatory System, Diseases of the Respiratory System, and Diseases of the Digestive System.

**Table 2. Number of Discharges by First-listed Diagnosis and Age,
New Mexico, 2007**

Category of First-listed Diagnosis	All Ages	< 15 Years	15 – 44 Years	45 – 64 Years	65 + Years
Infectious and Parasitic Diseases	5,061	612	892	1,346	2,211
Neoplasms	7,181	121	1,149	2,907	3,004
Endocrine, Nutritional and Metabolic Diseases, and Immunity Disorders	5,789	781	1,260	1,669	2,079
Diseases of the Blood and Blood-Forming Organs	1,422	149	264	346	663
Mental Disorders	13,245	1,037	7,388	3,836	984
Diseases of the Nervous System and Sense Organs	2,502	318	651	712	821
Diseases of the Circulatory System	20,824	76	1,285	6,408	13,055
Diseases of the Respiratory System	16,198	3,923	1,601	3,477	7,197
Diseases of the Digestive System	17,791	1,053	4,958	5,648	6,132
Diseases of the Genitourinary System	9,313	391	2,825	2,694	3,403
Complications of Pregnancy, Childbirth, and the Puerperium	5,318	8	5,284	26	0
Diseases of the Skin and Subcutaneous Tissue	3,333	349	1,013	1,112	859
Diseases of the Musculoskeletal System and Connective Tissue	8,444	135	1,105	3,119	4,085
Congenital Anomalies	772	514	132	86	40
Certain Conditions Originating in the Perinatal Period	1,123	1,122	1	0	0
Symptoms, Signs, and Ill-Defined Conditions	7,187	696	1,248	2,426	2,817
Injury and Poisoning	13,844	922	3,939	3,750	5,233
Supplementary Classifications	31,087	266	26,183	1,536	3,102

Number of Discharges by First-listed Diagnosis and Sex, New Mexico, 2007

The data in Table 3 provides information on number of discharges by sex and first-listed diagnosis as reported by New Mexico hospitals in 2007. Data highlights are provided as follows:

- The top five reasons for hospitalization for the male population in New Mexico during 2007 were Diseases of the Circulatory System, Diseases of the Digestive System, Diseases of the Respiratory System, Injury and Poisoning, and Mental Disorders; and
- The top five reasons for hospitalization for the female population in New Mexico during 2007 were Supplementary Classifications (includes Females with Deliveries), Diseases of the Circulatory System, Diseases of the Digestive System, Diseases of the Respiratory System, and Injury and Poisoning.

**Table 3. Number of Discharges by First-listed Diagnosis and Sex,
New Mexico, 2007**

Category of First-listed Diagnosis	Total	Male	Female
Infectious and Parasitic Diseases	5,061	2,360	2,701
Neoplasms	7,181	2,854	4,327
Endocrine, Nutritional and Metabolic Diseases, and Immunity Disorders	5,789	2,596	3,193
Diseases of the Blood and Blood-Forming Organs	1,422	597	825
Mental Disorders	13,245	6,853	6,392
Diseases of the Nervous System and Sense Organs	2,502	1,164	1,338
Diseases of the Circulatory System	20,824	11,027	9,797
Diseases of the Respiratory System	16,198	8,049	8,149
Diseases of the Digestive System	17,791	8,325	9,466
Diseases of the Genitourinary System	9,313	2,602	6,711
Complications of Pregnancy, Childbirth, and the Puerperium	5,318	0	5,318
Diseases of the Skin and Subcutaneous Tissue	3,333	1,819	1,514
Diseases of the Musculoskeletal System and Connective Tissue	8,444	3,685	4,759
Congenital Anomalies	772	446	326
Certain Conditions Originating in the Perinatal Period	1,123	657	466
Symptoms, Signs, and Ill-Defined Conditions	7,187	3,192	3,995
Injury and Poisoning	13,844	6,927	6,917
Supplementary Classifications	31,087	2,465	28,622

Number of Discharges by First-listed Diagnosis and Region, New Mexico, 2007

The data in Table 4 provides information on the number of discharges by DOH region and first-listed diagnosis as reported by New Mexico hospitals in 2007. Data highlights are provided as follows:

- The top three reasons for hospitalization in the Northwest Region were Supplementary Classifications (includes Females with Deliveries), Diseases of the Circulatory System, and Diseases of the Digestive System;
- The top three reasons for hospitalization in the Northeast Region were Supplementary Classifications (includes Females with Deliveries), Diseases of the Digestive System, and Diseases of the Circulatory System;
- The top three reasons for hospitalization in the Central Region were Supplementary Classifications (includes Females with Deliveries), Diseases of the Circulatory System, and Diseases of the Digestive System;
- The top three reasons for hospitalization in the Southeast Region were Supplementary Classifications (includes Females with Deliveries), Diseases of the Respiratory System, and Diseases of the Circulatory System; and
- The top three reasons for hospitalization in the Southwest Region were Supplementary Classifications (includes Females with Deliveries), Diseases of the Circulatory System, and Diseases of the Digestive System.

**Table 4. Number of Discharges by First-listed Diagnosis and Region,
New Mexico, 2007**

Category of First-listed Diagnosis	Total	NW	NE	Central	SE	SW
Infectious and Parasitic Diseases	5,061	949	796	1,305	1,081	930
Neoplasms	7,181	1,364	1,159	2,409	748	1,501
Endocrine, Nutritional and Metabolic Diseases, and Immunity Disorders	5,789	1,021	821	1,471	1,149	1,327
Diseases of the Blood and Blood-Forming Organs	1,422	227	199	421	234	341
Mental Disorders	13,245	2,272	1,702	4,176	2,158	2,937
Diseases of the Nervous System and Sense Organs	2,502	454	428	746	372	502
Diseases of the Circulatory System	20,824	3,713	2,782	6,051	2,807	5,471
Diseases of the Respiratory System	16,198	2,831	2,487	4,205	3,267	3,408
Diseases of the Digestive System	17,791	3,222	2,857	5,347	2,537	3,828
Diseases of the Genitourinary System	9,313	1,482	1,426	2,710	1,553	2,142
Complications of Pregnancy, Childbirth, and the Puerperium	5,318	928	635	1,914	763	1,078
Diseases of the Skin and Subcutaneous Tissue	3,333	587	474	1,032	555	685
Diseases of the Musculoskeletal System and Connective Tissue	8,444	1,665	1,083	2,906	977	1,813
Congenital Anomalies	772	185	110	269	78	130
Certain Conditions Originating in the Perinatal Period	1,123	266	209	308	120	220
Symptoms, Signs, and Ill-Defined Conditions	7,187	1,275	1,110	1,814	1,264	1,724
Injury and Poisoning	13,844	2,851	2,323	4,473	1,698	2,499
Supplementary Classifications	31,087	5,759	3,689	11,259	4,249	6,131

Hospital Discharge Rates per 10,000 Population by First-listed Diagnosis, New Mexico (2007) and United States (2006)

The data in Table 5 provides information on the overall hospital discharge rates for first-listed diagnosis as reported by New Mexico hospitals in 2007. The table also provides overall U.S. hospital discharge rates as provided in the 2006 National Hospital Discharge Survey. Data highlights are provided as follows:

- The highest discharge rate in New Mexico is the Supplementary Classifications (includes Females with Deliveries) diagnosis category at 157.1. The U.S. discharge rate for this same diagnosis category is 168.4;
- The New Mexico discharge rate for Mental Disorders is 66.4 compared to the U.S. rate of 81.1; and
- The discharge rate for the diagnosis category, Diseases of the Circulatory System, is higher for the U.S. (206.6) than for New Mexico (101.4).

**Table 5. Hospital Discharge Rates per 10,000 Population
by First-listed Diagnosis, New Mexico (2007) and United States (2006)**

Category of First-listed Diagnosis	Rate per 10,000 Population	
	New Mexico Rate*	U.S. Rate
Infectious and Parasitic Diseases	25.1	36.5
Neoplasms	34.7	55.0
Endocrine, Nutritional and Metabolic Diseases, and Immunity Disorders	28.5	55.8
Diseases of the Blood and Blood-Forming Organs	7.1	15.1
Mental Disorders	66.4	81.1
Diseases of the Nervous System and Sense Organs	12.4	20.6
Diseases of the Circulatory System	101.4	206.6
Diseases of the Respiratory System	80.2	116.9
Diseases of the Digestive System	88.0	117.9
Diseases of the Genitourinary System	46.8	66.2
Complications of Pregnancy, Childbirth, and the Puerperium	27.4	17.4
Diseases of the Skin and Subcutaneous Tissue	16.5	26.2
Diseases of the Musculoskeletal System and Connective Tissue	40.7	66.0
Congenital Anomalies	3.8	6.5
Certain Conditions Originating in the Perinatal Period	5.6	6.7
Symptoms, Signs, and Ill-Defined Conditions	35.1	6.3
Injury and Poisoning	68.7	99.5
Supplementary Classifications	157.1	168.4

*Rates are age-adjusted to the 2000 U.S. Standard Population.

Hospital Discharge Rates per 10,000 Population by First-listed Diagnosis and Age, New Mexico, 2007

The data in Table 6 provides information on hospital discharge rates per 10,000 population by age and first-listed diagnosis as reported by New Mexico hospitals in 2007. Data highlights are provided as follows:

- For the population under 15 years of age, the highest discharge rates are attributable to the following categories of diagnoses: Diseases of the Respiratory System, Injury and Poisoning, Diseases of the Digestive System, Certain Conditions Originating in the Perinatal Period, and Mental Disorders;
- For the 15-44 years of age group, the highest discharge rates are attributable to the following categories of diagnoses: Supplementary Classifications (includes Females with Deliveries), Mental Disorders, Complications of Pregnancy, Childbirth, and the Puerperium, Diseases of the Digestive System, and Injury and Poisoning;
- For the 45-64 years of age group, the highest discharge rates are attributable to the following categories of diagnoses: Diseases of the Circulatory System, Diseases of the Digestive System, Injury and Poisoning, Mental Disorders, and Diseases of the Respiratory System; and
- For the 65 years and older age group, the highest discharge rates are attributable to the following categories of diagnoses: Diseases of the Circulatory System, Diseases of the Respiratory System, Diseases of the Digestive System, Injury and Poisoning, and Diseases of the Musculoskeletal System and Connective Tissue.

**Table 6. Hospital Discharge Rates per 10,000 Population
by First-listed Diagnosis and Age, New Mexico, 2007**

Category of First-listed Diagnosis	Rate per 10,000 Population				
	Total	< 15 Years	15 – 44 Years	45 – 64 Years	65 + Years
Infectious and Parasitic Diseases	25.1	14.9	10.8	25.6	89.2
Neoplasms	34.7	2.9	13.9	55.3	121.2
Endocrine, Nutritional and Metabolic Diseases, and Immunity Disorders	28.5	19.0	15.3	31.7	83.9
Diseases of the Blood and Blood-Forming Organs	7.1	3.6	3.2	6.6	26.7
Mental Disorders	66.4	25.2	89.5	72.9	39.7
Diseases of the Nervous System and Sense Organs	12.4	7.7	7.9	13.5	33.1
Diseases of the Circulatory System	101.4	1.8	15.6	121.8	526.6
Diseases of the Respiratory System	80.2	95.4	19.4	66.1	290.3
Diseases of the Digestive System	88.0	25.6	60.0	107.4	247.3
Diseases of the Genitourinary System	46.8	9.5	34.2	51.2	137.3
Complications of Pregnancy, Childbirth, and the Puerperium	27.4	0.2	64.0	0.5	0.0
Diseases of the Skin and Subcutaneous Tissue	16.5	8.5	12.3	21.1	34.6
Diseases of the Musculoskeletal System and Connective Tissue	40.7	3.3	13.4	59.3	164.8
Congenital Anomalies	3.8	12.5	1.6	1.6	1.6
Certain Conditions Originating in the Perinatal Period	5.6	27.3	0.0	0.0	0.0
Symptoms, Signs, and Ill-Defined Conditions	35.1	16.9	15.1	46.1	113.6
Injury and Poisoning	68.7	22.4	47.7	71.3	211.1
Supplementary Classifications	157.1	6.5	317.1	29.2	125.1

Hospital Discharge Rates per 10,000 Population by First-listed Diagnosis and Sex, New Mexico, 2007

The data in Table 7 provides information on hospital discharge rates per 10,000 population by sex and first-listed diagnosis as reported by New Mexico hospitals in 2007. Data highlights are provided as follows:

- For the male population in New Mexico, the top five discharge rates are attributable to the following categories of diagnoses: Diseases of the Circulatory System, Diseases of the Digestive System, Diseases of the Respiratory System, Injury and Poisoning, and Mental Disorders;
- For the female population, the top five discharge rates are attributable to the following categories of diagnoses: Supplementary Classifications (includes Females with Deliveries), Diseases of the Digestive System, Diseases of the Circulatory System, Diseases of the Respiratory System, and Diseases of the Genitourinary System; and
- Females have a higher discharge rate for Neoplasms (40.0) compared to the discharge rate for males (29.7) while males have higher discharge rates than females for Diseases of the Circulatory System and Diseases of the Respiratory System.

**Table 7. Hospital Discharge Rates per 10,000 Population
by First-listed Diagnosis and Sex, New Mexico, 2007**

Category of First-listed Diagnosis	Rate per 10,000 Population*		
	Total	Male	Female
Infectious and Parasitic Diseases	25.1	25.3	24.9
Neoplasms	34.7	29.7	40.0
Endocrine, Nutritional and Metabolic Diseases, and Immunity Disorders	28.5	27.1	29.7
Diseases of the Blood and Blood-Forming Organs	7.1	6.5	7.7
Mental Disorders	66.4	69.5	63.3
Diseases of the Nervous System and Sense Organs	12.4	12.2	12.7
Diseases of the Circulatory System	101.4	118.8	86.6
Diseases of the Respiratory System	80.2	86.5	75.1
Diseases of the Digestive System	88.0	87.2	88.6
Diseases of the Genitourinary System	46.8	28.6	64.9
Complications of Pregnancy, Childbirth, and the Puerperium	27.4	0.0	55.3
Diseases of the Skin and Subcutaneous Tissue	16.5	18.8	14.3
Diseases of the Musculoskeletal System and Connective Tissue	40.7	38.3	42.5
Congenital Anomalies	3.8	4.4	3.3
Certain Conditions Originating in the Perinatal Period	5.6	6.4	4.7
Symptoms, Signs, and Ill-Defined Conditions	35.1	33.6	36.6
Injury and Poisoning	68.7	72.5	63.9
Supplementary Classifications	157.1	26.7	290.6

*Rates are age-adjusted to the 2000 U.S. Standard Population.

Hospital Discharge Rates per 10,000 Population by First-listed Diagnosis and Region, New Mexico, 2007

The data in Table 8 provides information on hospital discharge rates per 10,000 population by DOH region and first-listed diagnosis as reported by New Mexico hospitals in 2007. Data highlights are provided as follows:

- The Central Region had the highest discharge rate per 10,000 for Supplementary Classifications (includes Females with Deliveries) with 180.8 followed by the Southeast Region with 167.1. The next highest discharge rates by region are as follows: Southwest Region (147.7); Northwest Region (140.3); and Northeast Region (133.6);
- The Southwest Region had the highest discharge rate per 10,000 for Diseases of the Circulatory System with 122.9. The next highest discharge rates by region are as follows: Southeast Region (102.6); Northwest Region (100.9); Central Region (95.5); and Northeast Region (83.5); and
- The Southeast Region has a higher discharge rate than all other regions for Diseases of the Respiratory System with a rate of 121.9.

**Table 8. Hospital Discharge Rates per 10,000 Population
by First-listed Diagnosis and Region, New Mexico, 2007**

Category of First-listed Diagnosis	Rate per 10,000 Population*					
	Total	NW	NE	Central	SE	SW
Infectious and Parasitic Diseases	25.1	25.0	25.3	20.8	40.8	21.7
Neoplasms	34.7	34.9	34.1	37.6	29.0	34.5
Endocrine, Nutritional and Metabolic Diseases, and Immunity Disorders	28.5	26.2	26.1	23.3	43.8	31.0
Diseases of the Blood and Blood-Forming Organs	7.1	5.9	6.3	6.8	8.8	8.1
Mental Disorders	66.4	54.5	55.8	66.5	88.9	73.8
Diseases of the Nervous System and Sense Organs	12.4	11.5	13.7	11.8	14.3	12.2
Diseases of the Circulatory System	101.4	100.9	83.5	95.5	102.6	122.9
Diseases of the Respiratory System	80.2	73.6	81.2	67.3	121.9	79.0
Diseases of the Digestive System	88.0	82.4	89.1	84.8	99.0	91.4
Diseases of the Genitourinary System	46.8	38.7	45.7	43.3	62.2	52.1
Complications of Pregnancy, Childbirth, and the Puerperium	27.4	22.5	23.7	31.0	30.4	26.9
Diseases of the Skin and Subcutaneous Tissue	16.5	14.9	14.7	16.2	22.4	16.5
Diseases of the Musculoskeletal System and Connective Tissue	40.7	42.7	32.2	45.4	36.9	41.2
Congenital Anomalies	3.8	4.2	4.1	4.3	2.9	3.2
Certain Conditions Originating in the Perinatal Period	5.6	5.9	8.3	4.9	4.4	5.3
Symptoms, Signs, and Ill-Defined Conditions	35.1	32.7	34.5	28.5	48.4	40.5
Injury and Poisoning	68.7	73.4	74.2	71.2	65.0	59.2
Supplementary Classifications	157.1	140.3	133.6	180.8	167.1	147.7

*Rates are age-adjusted to the 2000 U.S. Standard Population.

Number of First-listed Procedures by Procedure Category and Age, New Mexico, 2007

The data in Table 9 provides information on the first-listed procedure by procedure category and age as reported by New Mexico hospitals in 2007. Data highlights are provided as follows:

- For the population under 15 years of age, the top three first-listed procedures are attributable to the following categories: Miscellaneous Diagnostic and Therapeutic Procedures and New Technologies, Operations on the Digestive System, and Operations on the Nervous System;
- For the 15-44 years of age group, the top three first-listed procedures are attributable to the following categories: Obstetrical Procedures, Operations on the Digestive System, and Miscellaneous Diagnostic and Therapeutic Procedures and New Technologies;
- For the 45-64 years of age group, the top three first-listed procedures are attributable to the following categories: Miscellaneous Diagnostic and Therapeutic Procedures and New Technologies, Operations on the Digestive System, and Operations on the Musculoskeletal System; and
- For the 65 years and older age group, the top three first-listed procedures are attributable to the following categories: Miscellaneous Diagnostic and Therapeutic Procedures and New Technologies, Operations on the Musculoskeletal System, and Operations on the Digestive System.

**Table 9. Number of First-listed Procedures
by Procedure Category and Age, New Mexico, 2007**

Procedure Category	ICD-9-CM Codes	Total	< 15 Years	15 – 44 Years	45 – 64 Years	65 + Years
Operations on the Nervous System	01-05	2,708	512	670	744	782
Operations on the Endocrine System	06-07	390	3	114	170	103
Operations on the Eye	08-16	108	17	35	35	21
Operations on the Ear	18-20	122	90	12	15	5
Operations on the Nose, Mouth, and Pharynx	21-29	692	243	215	133	101
Operations on the Respiratory System	30-34	2,341	107	360	745	1,129
Operations on the Cardiovascular System	35-39, 00.50- 00.51, 00.53- 00.55, 00.61-00.66	10,583	269	1,288	3,631	5,395
Operations on the Hemic and Lymphatic System	40-41	547	33	126	187	201
Operations on the Digestive System	42-54	15,282	828	4,032	4,890	5,532
Operations on the Urinary System	55-59	2,064	101	447	646	870
Operations on the Male Genital Organs	60-64	971	45	41	314	571
Operations on the Female Genital Organs	65-71	6,118	28	3,582	1,968	540
Obstetrical Procedures	72-75	26,334	31	26,209	70	24
Operations on the Musculoskeletal System	76-84, 00.70- 00.73, 00.80-00.84	11,960	394	1,985	3,955	5,626
Operations on the Integumentary System	85-86	3,482	257	1,031	1,265	929
Miscellaneous Diagnostic and Therapeutic Procedures and New Technologies	87-99, 00	18,023	1,679	3,631	5,544	7,169

Number of First-listed Procedures by Procedure Category and Sex, New Mexico, 2007

The data in Table 10 provides information on the first-listed procedure by procedure category and sex as reported by New Mexico hospitals in 2007. Data highlights are provided as follows:

- The top five first-listed procedures performed on the male population in New Mexico during 2007 were Miscellaneous Diagnostic and Therapeutic Procedures and New Technologies, Operations on the Digestive System, Operations on the Cardiovascular System, Operations on the Musculoskeletal System, and Operations on the Integumentary System; and
- The top five first-listed procedures performed on the female population in New Mexico during 2007 were Obstetrical Procedures, Miscellaneous Diagnostic and Therapeutic Procedures and New Technologies, Operations on the Digestive System, Operations on the Musculoskeletal System, and Operations on the Female Genital Organs.

**Table 10. Number of First-listed Procedures
by Procedure Category and Sex, New Mexico, 2007**

Procedure Category	ICD-9-CM Codes	Total	Male	Female
Operations on the Nervous System	01-05	2,708	1,412	1,296
Operations on the Endocrine System	06-07	390	114	276
Operations on the Eye	08-16	108	66	42
Operations on the Ear	18-20	122	69	53
Operations on the Nose, Mouth, and Pharynx	21-29	692	381	311
Operations on the Respiratory System	30-34	2,341	1,278	1,063
Operations on the Cardiovascular System	35-39, 00.50- 00.51, 00.53- 00.55, 00.61-00.66	10,583	5,654	4,929
Operations on the Hemic and Lymphatic System	40-41	547	272	275
Operations on the Digestive System	42-54	15,282	7,220	8,062
Operations on the Urinary System	55-59	2,064	1,029	1,035
Operations on the Male Genital Organs	60-64	971	971	0
Operations on the Female Genital Organs	65-71	6,118	6	6,112
Obstetrical Procedures	72-75	26,334	23	26,311
Operations on the Musculoskeletal System	76-84, 00.70- 00.73, 00.80-00.84	11,960	5,466	6,494
Operations on the Integumentary System	85-86	3,482	1,666	1,816
Miscellaneous Diagnostic and Therapeutic Procedures and New Technologies	87-99, 00	18,023	9,430	8,593

Number of First-listed Procedures by Procedure Category and Region, New Mexico, 2007

The data in Table 11 provides information on the first-listed procedure by procedure category and DOH region as reported by New Mexico hospitals in 2007. Data highlights are provided as follows:

- The Central Region had the highest number of Obstetrical Procedures with 9,509. The numbers of Obstetrical Procedures for the remaining regions are as follows: Southwest Region (5,047), Northwest Region (4,936), Southeast Region (3,660), and Northeast Region (3,182); and
- The Central Region had the highest number of Operations on the Digestive System with 5,017. The numbers of Operations of the Digestive System for the remaining regions are as follows: Southwest Region (3,179), Northwest Region (3,022), Northeast Region (2,275), and Southeast Region (1,789).

**Table 11. Number of First-listed Procedures
by Procedure Category and Region, New Mexico, 2007**

Procedure Category	ICD-9-CM Codes	NW	NE	Central	SE	SW
Operations on the Nervous System	01-05	656	440	993	161	458
Operations on the Endocrine System	06-07	57	56	136	43	98
Operations on the Eye	08-16	28	22	37	5	16
Operations on the Ear	18-20	36	13	44	8	21
Operations on the Nose, Mouth, and Pharynx	21-29	151	79	269	78	115
Operations on the Respiratory System	30-34	449	382	759	219	532
Operations on the Cardiovascular System	35-39, 00.50- 00.51, 00.53- 00.55, 00.61-00.66	2,282	1,263	3,387	1,012	2,639
Operations on the Hemic and Lymphatic System	40-41	102	72	213	43	117
Operations on the Digestive System	42-54	3,022	2,275	5,017	1,789	3,179
Operations on the Urinary System	55-59	335	258	608	317	546
Operations on the Male Genital Organs	60-64	163	141	282	126	259
Operations on the Female Genital Organs	65-71	948	977	1,933	1,024	1,236
Obstetrical Procedures	72-75	4,936	3,182	9,509	3,660	5,047
Operations on the Musculoskeletal System	76-84, 00.70- 00.73, 00.80-00.84	2,355	1,744	3,989	1,423	2,449
Operations on the Integumentary System	85-86	646	514	1,078	482	762
Miscellaneous Diagnostic and Therapeutic Procedures and New Technologies	87-99, 00	3,994	2,451	6,228	1,773	3,577

SPECIFIC CATEGORIES OF DISEASE AND INJURY

This section of the report provides additional hospital discharge and average length of stay data on specific categories of disease and injury in New Mexico during 2007. The specific categories are asthma, diabetes mellitus, influenza and pneumonia, injury and mental disorders.

This section of the report includes data for the first-listed diagnosis and data for all-listed diagnoses for specific categories of disease and injury in New Mexico. First-listed diagnosis refers to a mention of a specific disease or injury ICD-9 code in the first of nine diagnostic fields of the medical record. All-listed diagnoses refer to a mention of a specific disease or injury ICD-9 code within any of nine diagnostic fields of the medical record.

ASTHMA

Asthma is a chronic inflammatory disease of the airways characterized by wheezing, coughing, breathlessness, and chest tightness. Asthma symptoms can be triggered by allergens (substances that cause an allergic response) or irritants (substances that irritate the nose or airways provoking asthma symptoms), such as animal dander, air pollution, pollen, exercise, cold air, or stress.

According to the table entitled, *Number, Rate and Average Length of Stay for Asthma Inpatient Hospital Discharges, First-listed Diagnosis by Age, Sex, and Region, New Mexico, 2007*, on the adjacent page:

- In 2007, there were 1,753 hospitalizations where asthma was the primary or first-listed diagnosis;
- Females accounted for 55.0% of primary asthma hospitalizations;
- New Mexicans under 15 years of age had the largest number of asthma hospital discharges and the highest rate;
- While the Central Region had the largest number of asthma primary discharges compared to the other New Mexico regions, the Southeast Region had the highest rates for both males and females; and
- The average length of stay in the hospital due to asthma was 3.4 days. The length of stay varied between 2.4 days and 5.3 days when all age groups and regions were examined.

Table 12. Number, Rate, and Average Length of Stay for Asthma Inpatient Hospital Discharges, First-listed Diagnosis* by Age, Sex, and Region, New Mexico, 2007

	Total	Male	Female
Number of Discharges			
Total	1,753	789	964
< 15 Years	774	477	297
15 - 44 Years	297	106	191
45 - 64 Years	400	111	289
65 Years and Older	282	95	187
Northwest Region	271	123	148
Northeast Region	236	101	135
Central Region	480	217	263
Southeast Region	453	211	242
Southwest Region	313	137	176
Rate Per 10,000 Population**			
Total	8.7	8.1	9.3
< 15 Years	18.8	22.9	14.7
15 - 44 Years	3.6	2.5	4.7
45 - 64 Years	7.6	4.4	10.6
65 Years and Older	11.4	8.7	13.5
Northwest Region	6.5	5.9	6.9
Northeast Region	7.8	7.4	8.2
Central Region	7.7	7.2	8.1
Southeast Region	17.6	16.1	19.0
Southwest Region	7.5	6.6	8.2
Average Length of Stay in Days			
Total	3.4	2.8	3.9
< 15 Years	2.4	2.4	2.4
15 - 44 Years	3.0	3.0	3.0
45 - 64 Years	4.6	3.4	5.0
65 Years and Older	4.7	3.7	5.3
Northwest Region	3.0	2.9	3.1
Northeast Region	4.1	3.0	4.9
Central Region	3.1	2.7	3.4
Southeast Region	3.5	2.5	4.3
Southwest Region	3.4	3.0	3.8

*A first-listed diagnosis refers to a mention of the ICD-9 asthma codes in the first of nine diagnostic fields of the medical record.

**Except for age-specific rates, all rates are age-adjusted to the 2000 U.S. Standard Population.

NOTE: Asthma ICD-9 CM code is 493.0 – 493.92.

2007 HIDD

The adjacent table entitled, *Number, Rate, and Average Length of Stay for Asthma Inpatient Hospital Discharges, All-listed Diagnoses by Age, Sex, and Region, New Mexico, 2007*, shows the numbers, rates, and average length of stay when asthma is included with other diagnoses as either the first-listed or the second through ninth listed cause of hospitalization.

- In 2007, there were 9,885 hospital discharges with asthma reported as the primary or one of the secondary diagnoses;
- Females accounted for 65.6% of all cases;
- The Central Region had the largest number of primary or secondary asthma discharges, but the Southeast Region had the highest discharge rate;
- Males had a longer length of stay in the hospital (5.0 days) compared to females (4.3 days); and
- The Southwest Region had the longest length of stay for both males and females.

Table 13. Number, Rate, and Average Length of Stay for Asthma Inpatient Hospital Discharges, All-listed Diagnoses* by Age, Sex, and Region, New Mexico, 2007

	Total	Male	Female
Number of Discharges			
Total	9,885	3,398	6,487
< 15 Years	1,752	1,054	698
15 - 44 Years	3,068	767	2,301
45 - 64 Years	2,708	782	1,926
65 Years and Older	2,357	795	1,562
Northwest Region	1,697	577	1,120
Northeast Region	1,287	432	855
Central Region	3,213	1,047	2,166
Southeast Region	1,724	633	1,091
Southwest Region	1,964	709	1,255
Rate Per 10,000 Population**			
Total	48.8	35.0	61.8
< 15 Years	42.6	50.5	34.5
15 - 44 Years	37.2	18.4	56.3
45 - 64 Years	51.5	30.7	70.9
65 Years and Older	95.1	72.9	112.4
Northwest Region	41.8	29.2	53.2
Northeast Region	42.0	30.0	53.9
Central Region	50.7	34.9	65.4
Southeast Region	67.0	50.0	83.5
Southwest Region	46.5	34.6	58.0
Average Length of Stay in Days			
Total	4.6	5.0	4.3
< 15 Years	4.2	4.5	3.8
15 - 44 Years	4.6	6.7	4.0
45 - 64 Years	4.3	4.8	4.2
65 Years and Older	5.0	4.4	5.2
Northwest Region	4.7	4.9	4.5
Northeast Region	4.3	4.1	4.4
Central Region	4.5	5.2	4.1
Southeast Region	4.4	4.8	4.2
Southwest Region	5.0	5.7	4.6

*All-listed diagnoses refer to a mention of the ICD-9 asthma codes within the nine diagnostic fields of the medical record.

**Except for age-specific rates, all rates are age-adjusted to the 2000 U.S. Standard Population.

NOTE: Asthma ICD-9 CM code is 493.0 – 493.92.

DIABETES

Diabetes mellitus is a group of diseases marked by high levels of blood glucose resulting from defects in insulin production, insulin action, or both. The hormone insulin regulates blood glucose. Diabetes can lead to serious complications and premature death, but people with diabetes can take steps to control the disease and lower the risk of complications. The following two tables on diabetes inpatient discharges include diabetes with and without complications.

According to the adjacent table entitled, *Number, Rate, and Average Length of Stay for Diabetes Inpatient Hospital Discharges, First-listed Diagnosis by Age, Sex, and Region, New Mexico, 2007*:

- In 2007, there were 2,514 discharges with diabetes as the principal diagnoses, with an overall state rate of 12.3 diabetes discharges per 10,000 population;
- The male rate of 13.2 per 10,000 population was higher than the female rate of 11.6;
- The highest rate was among the 65 years and older group at 27.1. The highest rate by age and gender was among males 65 years and older at 27.9. This same pattern was seen in 2006;
- The highest regional rate was in the Southeast Region, at 16.4 diabetes discharges per 10, 000; the lowest was in the Central Region at 10.6;
- The average length of stay (ALOS) was 5.0 days;
- Males in 65 years and older group had the highest ALOS, at 7.6 days;
- The highest ALOS by region were in the Northeast Region and Northwest Region; this was also the case in 2006. The highest ALOS were among males in the Northeast Region, at 7.6 days; and
- The lowest ALOS was in the Southeast Region at 3.7 days. This region also had the highest rate of diabetes discharges, at 16.4 per 10,000 population.

Table 14. Number, Rate, and Average Length of Stay for Diabetes Inpatient Hospital Discharges, First-listed Diagnosis* by Age, Sex, and Region, New Mexico, 2007

	Total	Male	Female
Number			
Total	2,514	1,288	1,226
< 15 Years	133	54	79
15 - 44 Years	818	423	395
45 - 64 Years	891	507	384
65 Years and Older	672	304	368
Northwest Region	508	291	217
Northeast Region	399	197	202
Central Region	678	342	336
Southeast Region	418	195	223
Southwest Region	511	263	248
Rate Per 10,000 Population			
Total	12.3	13.2	11.6
< 15 Years	3.2	2.6	3.9
15 - 44 Years	9.9	10.1	9.7
45 - 64 Years	16.9	19.9	14.1
65 Years and Older	27.1	27.9	26.5
Northwest Region	12.9	15.6	10.4
Northeast Region	12.5	12.2	12.9
Central Region	10.6	11.2	10.2
Southeast Region	16.4	16.0	16.9
Southwest Region	12.0	12.9	11.2
Average Length of Stay in Days			
Total	5.0	5.6	4.4
< 15 Years	3.0	3.3	2.7
15 - 44 Years	3.6	4.0	3.2
45 - 64 Years	5.6	6.0	5.0
65 Years and Older	6.4	7.6	5.4
Northwest Region	5.3	5.6	5.0
Northeast Region	6.0	7.6	4.5
Central Region	5.1	5.7	4.4
Southeast Region	3.7	4.2	3.3
Southwest Region	4.9	5.0	4.7

*A first-listed diagnosis refers to a mention of the ICD-9 diabetes code in the first of nine diagnostic fields of the medical record.

**Except for age-specific rates, all rates are age-adjusted to the 2000 U.S. Standard Population.

NOTE: Diabetes mellitus ICD-9 CM code is 250 – 250.9.

2007 HIDD

Up to nine diagnoses can be given (coded) for a discharge. The adjacent table entitled, *Number, Rate, and Average Length of Stay for Diabetes Inpatient Hospital Discharges, All-listed Diagnoses by Age, Sex, and Region, New Mexico, 2007*, shows data on discharges in which a diagnosis of diabetes occurred within any of these nine diagnoses.

- In 2007, there were 24,290 discharges with any mention of a diabetes diagnosis;
- The overall state rate was 117.2 diabetes discharges per 10,000 population, and is fairly similar to the 2006 rate;
- The highest regional rate was in the Southeast Region, at 148.6 diabetes discharges per 10,000. The Northeast Region had the lowest regional rate, at 99.6 per 10,000;
- The 65 years and older group had the highest rate at 478.5 per 10,000. The rates by gender in this age group were correspondingly high at 482.5 for males and 475.4 for females;
- The average length of stay was 5.0 days, similar to the ALOS for discharges with diabetes as principal diagnoses and to the 2006 ALOS;
- The highest ALOS was in the Northeast Region with 6.3 days. This same region had the lowest rate of diabetes discharges, at 99.6 per 10,000; and
- The lowest ALOS was in the Southeast Region, at 4.1 days. Interestingly, the Southeast Region had the highest rate of diabetes discharges, as noted above.

Table 15. Number, Rate, and Average Length of Stay for Diabetes Inpatient Hospital Discharges, All-listed Diagnoses* by Age, Sex, and Region, New Mexico, 2007

	Total	Male	Female
Number			
Total	24,290	11,147	13,143
< 15 Years	180	83	97
15 - 44 Years	3,282	1,386	1,899
45 - 64 Years	8,965	4,421	4,544
65 Years and Older	11,863	5,260	6,603
Northwest Region	4,918	2,345	2,573
Northeast Region	3,341	1,505	1,836
Central Region	6,585	2,956	3,629
Southeast Region	3,951	1,707	2,244
Southwest Region	5,495	2,634	2,861
Rate Per 10,000 Population			
Total	117.2	116.3	118.5
< 15 Years	4.4	4.0	4.8
15 - 44 Years	39.7	33.2	46.5
45 - 64 Years	170.4	173.8	167.2
65 Years and Older	478.5	482.5	475.4
Northwest Region	129.2	131.6	124.2
Northeast Region	99.6	98.0	109.5
Central Region	102.8	103.1	105.8
Southeast Region	148.6	136.3	157.5
Southwest Region	124.8	125.9	124.3
Average Length of Stay in Days			
Total	5.0	5.1	4.9
< 15 Years	3.9	5.2	2.8
15 - 44 Years	4.3	4.5	4.1
45 - 64 Years	5.2	5.3	5.2
65 Years and Older	5.1	5.1	5.0
Northwest Region	5.1	5.2	5.0
Northeast Region	6.3	5.9	6.6
Central Region	5.1	5.3	4.9
Southeast Region	4.1	4.3	4.0
Southwest Region	4.7	4.8	4.6

*All-listed diagnoses refer to a mention of the ICD-9 diabetes code within the nine diagnostic fields of the medical record.

**Except for age-specific rates, all rates are age-adjusted to the 2000 U.S. Standard Population.

NOTE: Diabetes mellitus ICD-9 CM code is 250 – 250.9.

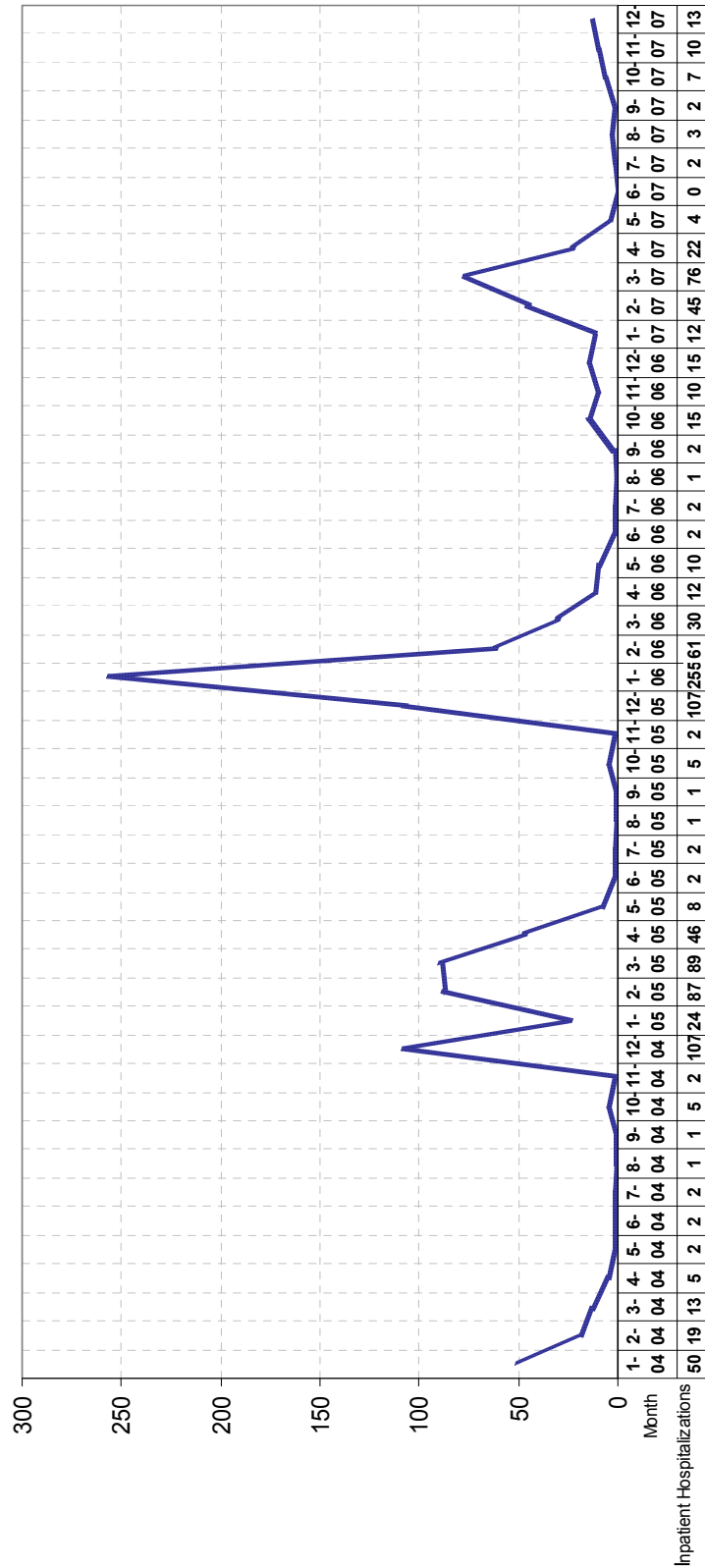
INFLUENZA AND PNEUMONIA

Pneumonia is an inflammatory disease of the lungs and can be caused by bacterial, viral or fungal infections. Secondary pneumonia can often occur following an infection with the influenza virus, a virus that causes fever, cough, sore throat and respiratory complications.

The adjacent figure labeled, *Influenza-related Inpatient Discharges by Month, New Mexico Residents, January 2004 – December 2007*:

- Includes all hospitalizations of New Mexico residents from 2004-2007 in which influenza was listed as a primary or secondary cause of hospitalization;
- Clearly depicts the seasonality of influenza illness, with higher numbers of hospitalizations occurring during the months of October to May;
- Shows the variation of influenza seasonal severity, with a higher number of hospitalizations occurring during the 2005-2006 influenza season; and
- Provides evidence of a low baseline of influenza-related hospitalizations during the months of May to September.

Figure 5. Influenza-related* Inpatient Discharges by Month, New Mexico Residents, January 2004 - December 2007



*Any mention of the ICD-9-CM codes 487.0-487.8 within the nine diagnostic fields of the medical record.

2007 HIDD

The adjacent table entitled, *Numbers, Rates, and Average Length of Stay of Pneumonia or Influenza Inpatient Hospital Discharges, First-listed Diagnosis by Age, Sex, and Region, New Mexico, 2007*, shows the numbers, rates, and average length of stay when pneumonia or influenza was listed as the primary diagnosis and the cause of hospitalization.

- In 2007, there were 6,399 hospital discharges in which pneumonia or influenza were listed as the primary diagnosis;
- More than half of these hospitalizations (53%) occurred in adults older than 65 years of age;
- In 2007, the highest rate of hospitalization due to pneumonia or influenza occurred in the Southeast Region; and
- The average length of stay in the hospital for a primary diagnosis of pneumonia or influenza was 4.6 days and did not differ widely by gender or region of the state.

Table 16. Numbers, Rates and Average Length of Stay of Pneumonia or Influenza Inpatient Hospital Discharges, First-listed Diagnosis by Age, Sex, and Region, New Mexico, 2007

	Total	Male	Female
Number of Discharges			
All Ages	6,399	3,155	3,244
< 15 Years	1,040	594	446
15 - 44 Years	597	299	298
45 - 64 Years	1,392	651	741
65 Years and Older	3,370	1,611	1,759
Northwest Region	1,086	545	541
Northeast Region	1,091	544	547
Central Region	1,535	698	837
Southeast Region	1,186	595	591
Southwest Region	1,501	773	728
Rate per 10,000 Population*			
All Ages	31.8	34.8	29.6
< 15 Years	25.3	28.5	22.0
15 - 44 Years	7.2	7.2	7.3
45 - 64 Years	26.5	25.6	27.3
65 Years and Older	135.9	147.8	126.6
Northwest Region	29.1	32.1	26.6
Northeast Region	35.4	39.3	32.7
Central Region	24.5	25.8	23.9
Southeast Region	44.2	48.2	41.2
Southwest Region	34.9	38.7	31.8
Average Length of Stay in Days			
All Ages	4.6	4.5	4.7
< 15 Years	3.2	3.2	3.1
15 - 44 Years	4.0	4.0	4.0
45 - 64 Years	5.2	5.2	5.1
65 Years and Older	5.0	4.8	5.1
Northwest Region	4.4	4.3	4.6
Northeast Region	4.7	4.2	5.2
Central Region	4.9	5.1	4.7
Southeast Region	4.1	4.0	4.1
Southwest Region	4.9	4.9	5.0

*Except for age-specific rates, all rates are age-adjusted to the 2000 U.S. Standard Population.

INJURY

Injuries were the primary cause for 9,599 hospitalizations in New Mexico general and specialty hospitals in 2007. They comprised 5.6 % of all discharges from non-federal New Mexico hospitals this year. For this report, all types of injuries (e.g. fractures, open wounds, burns) as well as poisonings from various sources, such as overdoses from illicit drugs or prescription medications, were included in this category. Detailed information was provided also for the subcategories of burns, hip fractures, poisonings, spinal cord injury (SCI) and traumatic brain injury (TBI).

Table 17 on page 49 shows the age, sex and residence location of injury discharges.

For all injury/poisoning discharges:

- The highest rate of injury discharges was found in the 65 years and older age group at 147.3 per 10,000;
- The male rate of hospitalizations at 50.7 per 10,000 population exceeded that for females at 44.0 per 10,000; and
- Residents from the Northeast Region had the highest rate, 55.5 per 10,000 population.

For burns:

- The hospitalization rate for burns was similar across age groups at 0.8 – 0.9 per 10,000 population;
- The male rate at 1.4 per 10,000 was three and a half times higher the female rate for burn hospitalizations; and
- Residents from the Northwest Region had the highest rate, 1.2 per 10,000 population.

For hip fractures:

- Persons aged 65 years and older experienced 85.2% of hip fracture hospitalizations with a rate of 60.9 per 10,000 population;
- The female hip fracture rate at 10.5 per 10,000 was 1.5 times that for males; and
- Residents from the Southeast and Northwest Regions and the Central Region had the highest rates, at 9.6, 9.5 and 9.5 per 10,000 population respectively.

For poisoning:

- The highest rate for poisoning was found in the 15-44 years of age group at 11.5 per 10,000 population;
- The female rate at 9.8 per 10,000 was one-third higher than the male rate for poisoning hospitalizations; and
- Residents from the Northeast Region had the highest rate, 11.6 per 10,000 population.

For spinal cord injury (SCI):

- The highest rate for spinal cord injury was found in the 65 years and older age group at 0.4 per 10,000 population;
- The male rate at 0.4 per 10,000 was about four times higher than the female SCI rate; and
- Residents from the Northwest Region had the highest rate, 0.5 per 10,000 population.

For traumatic brain injury (TBI):

- The highest rate of TBI was found in the 65 years and older age group at 17.6 per 10,000 population;
- The male rate at 9.2 per 10,000 was 2.1% times higher than the female TBI rate; and
- Residents from the Northwest and Northeast Regions had the highest rates, 8.9 and 8.7 per 10,000 population respectively.

Table 17. Number and Rate* for Inpatient Hospital Discharges of Injury Conditions by Age, Sex, and Region, New Mexico, 2007

Category of first -listed Diagnosis and IDC-9-CM Code	Injury and Poisoning (800-995)		Burns (940-949)		Hip Fracture ** (820)		Poisonings (960-989)		Spinal Cord Injury (806, 952)		Traumatic Brain Injury^	
	Number	Rate	Number	Rate	Number	Rate	Number	Rate	Number	Rate	Number	Rate
All Ages	9,599	48.1	182	1.0	1,771	9.0	1,771	8.8	45	0.2	1,338	6.7
< 15 Years	694	16.9	39	0.9	8	0.2	85	2.1	2	0.0	141	3.4
15 - 44 Years	3,073	37.2	77	0.9	50	0.6	946	11.5	25	0.3	492	6.0
45 - 64 Years	2,181	41.5	43	0.8	204	3.9	545	10.4	8	0.2	268	5.1
65 Years and Older	3,651	147.3	23	0.9	1,509	60.9	195	7.9	10	0.4	437	17.6
Sex												
Male	4,819	50.7	139	1.4	563	6.8	166	7.8	33	0.4	876	9.2
Female	4,780	44.0	43	0.4	1,208	10.5	1,005	9.8	12	0.1	462	4.4
Region												
Northwest Region	1,940	50.3	48	1.2	315	9.5	287	6.9	17	0.5	352	8.9
Northeast Region	1,704	55.5	26	0.9	254	8.2	354	11.6	4	0.1	260	8.7
Central Region	3,101	49.8	70	1.1	576	9.5	535	8.4	11	0.2	478	7.7
Southeast Region	1,207	45.9	13	0.3	276	9.6	263	10.7	8	0.3	85	3.2
Southwest Region	1,647	39.2	25	0.6	350	8.1	332	8.3	5	0.1	163	3.8

*Except for age-specific rates, rates are age-adjusted to the 2000 U.S. Standard Population and expressed per 10,000 population.

** Defined as Neck of Femur.

^ Traumatic Brain Injury case identification based on all diagnosis fields, among primary injury diagnosis.

This page intentionally left blank.

2007 HIDD

Figures 6 and 7 on the following page show the patterns of discharge status and average (mean) length of stay for injuries.

For all injury discharges:

- Overall 2.6% of the injury discharges were fatal;
- 66.7% of all injury discharges were sent home;
- Another 17.0% were sent to long term care facilities; and
- The mean length of stay was 4.9 days.

For burns:

- 86.3% of burn discharges went home;
- Another 9.3% were sent to other general hospitals or medical facilities; and
- The mean length of stay was 9.0 days.

For hip fractures:

- 49.7% of hip fracture discharges were sent to long term care facilities;
- Another 30.0% of hip fracture discharges went home; and
- The mean length of stay was 6.0 days.

For poisoning:

- 74.9% of poisoning discharges went home;
- Another 17.3% were sent to other general hospitals or medical facilities; and
- The mean length of stay was 2.8 days.

For spinal cord injury (SCI):

- 48.9% of SCI discharges were sent to other general hospitals or medical facilities;
- Another 42.2% went home; and
- The mean length of stay was 21.0 days.

For traumatic brain injury (TBI):

- 66.0% of TBI discharges went home;
- Another 17.9% were sent to other general hospitals or medical facilities; and
- The mean length of stay was 8.7 days.

Figure 6. Discharge Status By Injury Type, New Mexico, 2007

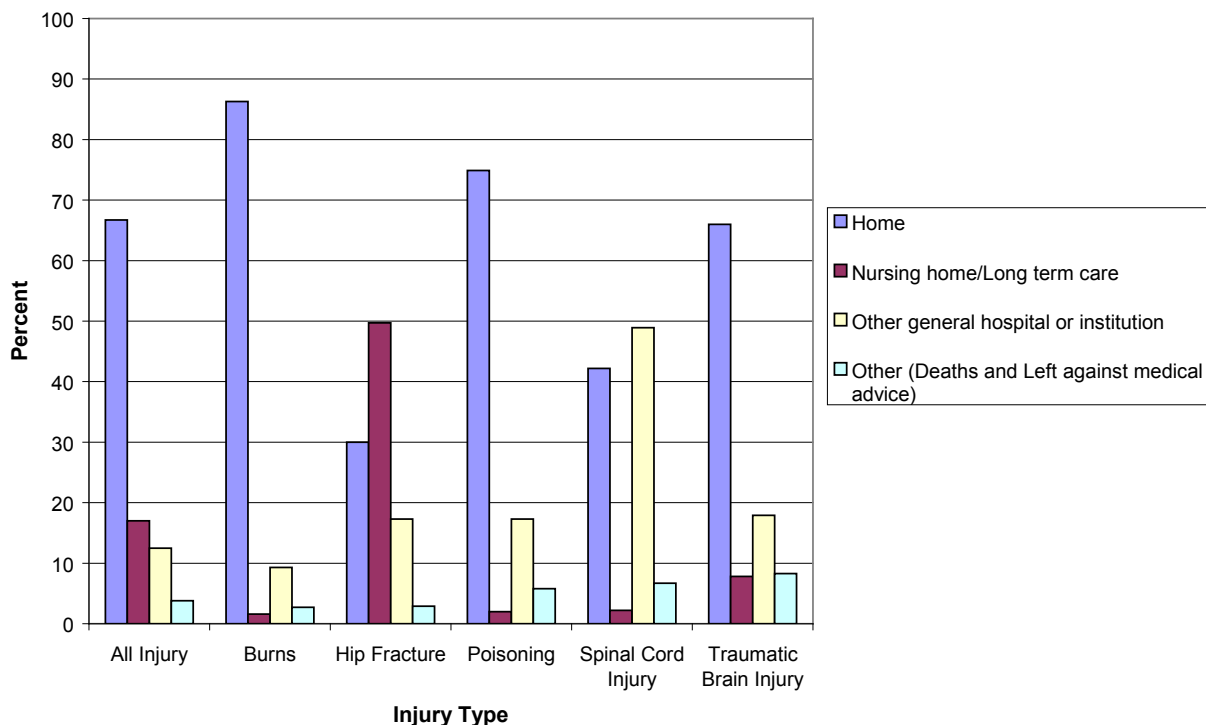
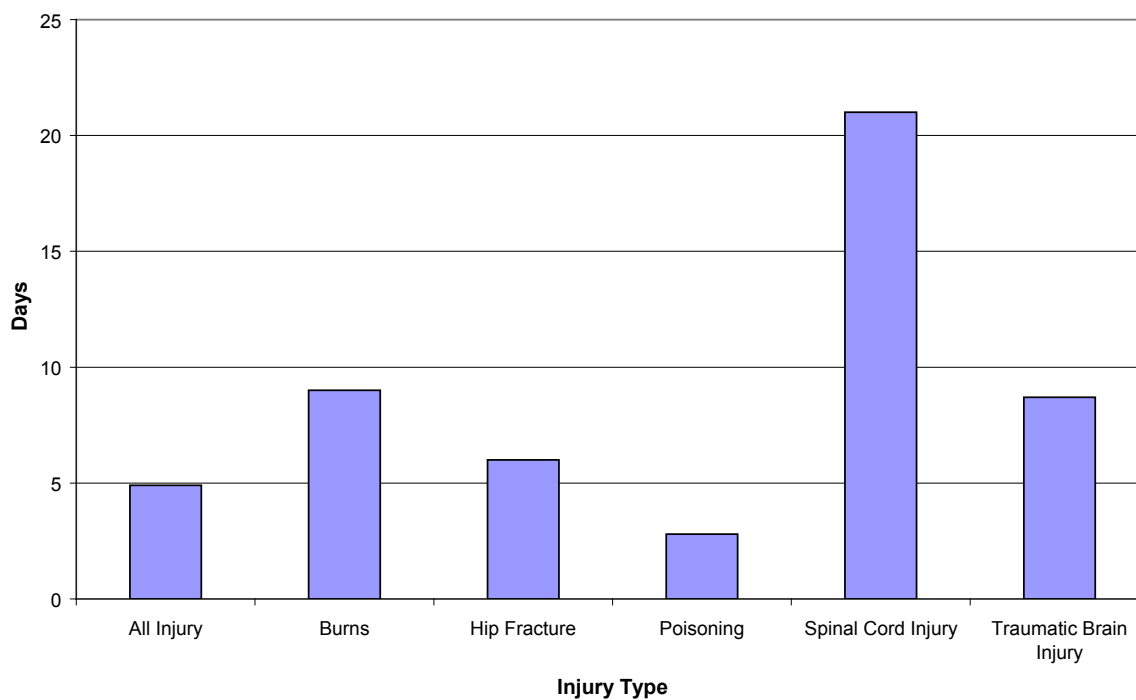


Figure 7. Average Length of Stay by Injury Type, New Mexico, 2007



MENTAL DISORDERS

Mental disorders are health conditions characterized by alterations in thinking, mood, and/or behavior that are associated with personal distress or role impairment. Common mental disorders include anxiety and mood disorders and substance use disorders. In any given year in the U.S., approximately one out of every four adults has a mental health condition.

The table on the adjacent page, entitled *Number and Rate of Inpatient Hospital Discharges with Mental Disorders by Sex and All-listed Diagnoses, New Mexico, 2007*, shows the numbers and rates of inpatient hospital discharges when a mental disorder is listed as one of the nine diagnoses during that hospitalization.

- Of the mental disorders listed in this report, patients with any diagnosis of “psychoses” accounted for the highest number (19,996) and rate (100.6 per 10,000) of inpatient hospital discharge;
- In 2007, mood disorders accounted for 14,117 primary or secondary hospital discharges;
- Depressive disorders, nonspecified, accounted for 50% of the primary or secondary hospital discharges in mood disorders diagnosis category, and females had a higher rate of discharge (43.7 per 10,000) than males (24.9 per 10,000);
- For substance disorders, the most common reason for primary or secondary hospital discharge was alcohol dependence syndrome (28.6 per 10,000), followed closely by non-dependent abuse of drugs (28.2 per 10,000);
- Males had rates of primary or secondary discharges for alcohol dependence syndrome and non-dependent alcohol abuse that were 2 or more times higher than females; and
- For the drug-specific substance disorders, cocaine dependence or abuse had the highest primary or secondary discharge rate (13.1 per 10,000).

Table 18. Number and Rate of Inpatient Hospital Discharges with Mental Disorders by Sex and All-listed Diagnoses, New Mexico, 2007

Category of First-listed Diagnosis	ICD-9-CM Codes	Total	Overall Rate		Male		Female	
			Number	Rate	Number	Rate	Number	Rate
Anxiety Disorders, All Mentions								
Generalized Anxiety Disorder and Anxiety, nos	300.00, 300.02	3,167	15.7	10.7	1,040	10.7	2,127	20.1
Obsessive-compulsive Disorder	300.3	239	1.2	1.0	103	1.0	136	1.3
Post-traumatic Stress Disorder	309.81	2,113	10.6	7.7	768	7.7	1,345	13.3
Mood Disorders, All Mentions								
Major Depressive Disorder	296.2x, 296.3x	3,357	16.6	13.0	1,297	13.0	2,060	20.2
Dysthymia	300.4	1,690	8.3	5.1	499	5.1	1,191	11.2
Bipolar I and II Disorders	296.4x - 296.7x	2,001	10.0	8.0	788	8.0	1,213	12.0
Depressive Disorder, nos	311	7,069	34.6	24.9	2,403	24.9	4,666	43.7
Psychoses, All Mentions								
Psychoses	290-299	19,996	100.6	101.8	9,597	101.8	10,399	98.9
Senile and Presenile Dementia	290, 290.0, 290.2x, 290.3	271	1.4	1.0	76	1.0	195	1.7
Alcoholic Psychoses	291.x	2,273	11.2	17.7	1,744	17.7	529	5.1
Drug Psychoses	292.x	1,339	6.7	7.0	674	7.0	665	6.4
Schizophrenia	295.xx	2,896	14.4	17.9	1,782	17.9	1,114	10.9
Substance Disorders, All Mentions								
Alcohol Dependence Syndrome	303.xx	5,790	28.6	41.0	4,051	41.0	1,739	17.0
Non-dependent Abuse of Alcohol	305.0x	3,795	18.8	26.1	2,595	26.1	1,200	11.9
Drug Dependence	304.xx	3,379	17.2	17.5	1,724	17.5	1,655	16.9
Non-dependent Abuse of Drugs	305.2x - 305.9x	5,577	28.2	31.3	3,102	31.3	2,475	25.2
Opioid Type Dependence/Abuse	304.0x, 304.7x, 305.5x	2,106	10.7	11.1	1,088	11.1	1,018	10.4
Cocaine Dependence/Abuse	304.2x, 305.6x	2,536	13.1	14.2	1,377	14.2	1,159	12.1
Cannabis Dependence/Abuse	304.3x, 305.2x	2,460	12.2	14.6	1,474	14.6	986	9.9
Amphetamine/Other Psychostimulant Type Dependence/Abuse	304.4x, 305.7x	1,524	7.9	7.7	741	7.7	783	8.2
Other Specified Drug Dependence/Abuse	304.6x, 305.9x	1,405	7.1	8.0	796	8.0	609	6.2
Other Disorders, All Mentions								
Autism Spectrum Disorders	299.00, 299.80	134	0.7	0.9	91	0.9	43	0.4
ADD/ADHD	314.0x	975	4.9	7.3	730	7.3	245	2.5
Developmental Delay	315.xx	362	1.8	2.0	201	2.0	161	1.6
Anorexia Nervosa and Bulimia	307.1, 307.51	64	0.3	0.1	5.0	0.1	59	0.6

The table on the adjacent page, entitled *Number and Rate of Inpatient Hospital Discharges with Mental Disorders by Age and All-listed Diagnoses, New Mexico, 2007*, shows the numbers and rates of inpatient hospital discharges when a mental disorder is listed as one of the nine diagnoses during that hospitalization.

- The rates of inpatient hospital discharge for primary or secondary diagnoses of psychoses increased with age, to a high of 238 per 10,000 in the 65 years and older age group;
- Schizophrenia hospital discharge rates were highest in the 45-64 years of age group, followed by the 15-44 years of age group;
- Hospital discharge rates for alcohol dependence syndrome were two times higher in the 45-64 years of age group (54.7 per 10,000) compared to the 15-44 years of age group (28.4 per 10,000);
- The rates of inpatient hospital discharge for non-dependent abuse of alcohol were similar in the 19-44 and 45-64 years of age groups, and declined in the 65 years and older age group; and
- Hospital discharges for non-dependent abuse of drugs were more common than discharges for drug dependence across all the age groups except the elderly 65 years and older age group.

Table 19. Number and Rate of Inpatient Hospital Discharges with Mental Disorders by Age and All-listed Diagnoses, New Mexico, 2007

Category of First-listed Diagnosis	ICD-9-CM Codes		< 15 Years		15 - 44 Years		45 - 64 Years		65 + Years	
	Number	Rate	Number	Rate	Number	Rate	Number	Rate	Number	Rate
Anxiety Disorders, All Mentions										
Generalized Anxiety Disorder and Anxiety, nos	61	1.5	1,138	13.8	1,118	21.3	850	34.3		
Obsessive-compulsive Disorder	12	0.3	133	1.6	72	1.4	22	0.9		
Post-traumatic Stress Disorder	245	6.0	1,168	14.1	632	12.0	68	2.7		
Mood Disorders, All Mentions										
Major Depressive Disorder	194	4.7	1,777	21.5	1,052	20.0	334	13.5		
Dysthymia	28	0.7	586	7.1	609	11.6	467	18.8		
Bipolar I and II Disorders	63	1.5	1,136	13.8	671	12.8	131	5.3		
Depressive Disorder, nos	146	3.6	2,340	28.3	2,596	49.3	1,987	80.1		
Psychoses, All Mentions										
Psychoses	791	19.2	7,772	94.1	5,534	105.2	5,899	237.9		
Senile and Presenile Dementia	0	0.0	0	0.0	2	0.0	269	10.9		
Alcoholic Psychoses	0	0.0	855	10.4	1,156	22.0	262	10.6		
Drug Psychoses	25	0.6	591	7.2	390	7.4	333	13.4		
Schizophrenia	19	0.5	1,507	18.3	1,101	20.9	269	10.9		
Substance Disorders, All Mentions										
Alcohol Dependence Syndrome	1	0.0	2,344	28.4	2,879	54.7	566	22.8		
Non-dependent Abuse of Alcohol	40	1.0	2,034	24.6	1,315	25.0	406	16.4		
Drug Dependence	52	1.3	2,252	27.3	948	18.0	127	5.1		
Non-dependent Abuse of Drugs	83	2.0	3,914	47.4	1,500	28.5	80	3.2		
Opioid Type Dependence/Abuse	11	0.3	1,279	15.5	742	14.1	74	3.0		
Cocaine Dependence/Abuse	8	0.2	1,853	22.4	660	12.5	15	0.6		
Cannabis Dependence/Abuse	93	2.3	1,949	23.6	401	7.6	17	0.7		
Amphetamine/Other Psychostimulant Type Dependence/Abuse	7	0.2	1,224	14.8	287	5.5	6	0.2		
Other Specified Drug Dependence/Abuse	16	0.4	891	10.8	455	8.6	43	1.7		
Other Disorders, All Mentions										
Autism Spectrum Disorders	68	1.7	57	0.7	8	0.2	1	0.0		
ADD/ADHD	463	11.3	442	5.4	67	1.3	3	0.1		
Developmental Delay	211	5.1	120	1.5	31	0.6	0	0.0		
Anorexia Nervosa and Bulimia	1	0.0	47	0.6	15	0.3	1	0.0		

Appendix



Appendix Table 1
Number of Discharges* by First-listed Diagnosis and Age, New Mexico 2007
– Expanded Listing

Category of First-listed Diagnosis	ICD-9-CM Codes	< 15 Years	15-44 Years	45-64 Years	65+ Years
Infectious and Parasitic Diseases	001 - 139	612	892	1,346	2,211
Septicemia	38	77	346	851	1,595
Neoplasms	140 - 239	121	1,149	2,907	3,004
Malignant Neoplasms	140 - 208, 230 - 234	74	482	2,032	2,593
Malignant Neoplasms of Large Intestine and Rectum	153 - 154, 197.5	0	33	256	456
Malignant Neoplasms of Trachea, Bronchus, and Lung	162, 176.4, 197.0, 197.3	1	19	177	371
Benign Neoplasms	210 - 229	33	630	802	288
Benign Neoplasms of Uterus	218 - 219	0	439	507	15
Endocrine, Nutritional and Metabolic Diseases, and Immunity Disorders	240 - 279	781	1,260	1,669	2,079
Diabetes Mellitus	250	133	818	891	672
Volume Depletion	276.5	525	161	273	626
Diseases of the Blood and Blood-Forming Organs	280 - 289	149	264	346	663
Anemias	280 - 285	23	150	203	437
Mental Disorders	290 - 319	1,037	7,388	3,836	984
Psychoses	290 - 299	567	5,275	3,026	817
Schizophrenic Disorders	295	14	1,154	687	87
Major Depressive Disorder	296.2 - 296.3	152	1,324	743	205
Diseases of the Nervous System and Sense Organs	320 - 389	318	651	712	821
Diseases of the Circulatory System	390 - 459	76	1,285	6,408	13,055
Essential Hypertension	401	3	40	149	156
Heart Disease	391 - 392.0, 393 - 398, 402, 404, 410 - 416, 420 - 429	26	782	4,464	8,842
Acute Myocardial Infarction	410	0	120	1,125	1,629
Coronary Atherosclerosis	414.0	0	61	1,117	1,669
Other Ischemic Heart Disease	411 - 413, 414.1 - 414.9	0	29	213	233
Cardiac Dysrhythmias	427	9	133	571	1,592
Congestive Heart Failure	428.0, 428.2 - 428.4	0	105	684	2,090
Cerebrovascular Disease	430 - 438	10	158	879	2,389

*Excludes newborn infants.

Appendix Table 1 (continued)
Number of Discharges* by First-listed Diagnosis and Age, New Mexico 2007
– Expanded Listing

Category of First-listed Diagnosis	ICD-9-CM Codes	< 15 Years	15-44 Years	45-64 Years	65+ Years
Diseases of the Respiratory System	460 - 519	3,923	1,601	3,477	7,197
Acute Bronchitis and Bronchiolitis	466	1,434	37	56	97
Pneumonia	480 - 486	987	576	1,368	3,340
Chronic Bronchitis	491	1	28	555	1,283
Asthma	493	774	297	400	282
Diseases of the Digestive System	520 - 579	1,053	4,958	5,648	6,132
Appendicitis	540 - 543	475	923	386	168
Non-Infectious Enteritis and Colitis	555 - 558	160	315	323	464
Intestinal Obstruction	560	49	163	403	845
Diverticula of Intestine	562	0	181	417	590
Cholelithiasis	574	11	869	644	662
Acute Pancreatitis	577.0	17	614	504	356
Diseases of the Genitourinary System	580 - 629	391	2,825	2,694	3,403
Calculus of Kidney and Ureter	592	4	297	289	132
Urinary Tract Infection	599.0	136	144	251	1,142
Complications of Pregnancy, Childbirth, and the Puerperium	630 - 677	8	5,284	26	0
Diseases of the Skin and Subcutaneous Tissue	680 - 709	349	1,013	1,112	859
Cellulitis and Abscess	681 - 682	299	848	941	646
Diseases of the Musculoskeletal System and Connective Tissue	710 - 739	135	1,105	3,119	4,085
Osteoarthritis and Allied Disorders	715	0	97	1,354	2,172
Intervertebral Disc Disorders	722	0	347	539	308
Congenital Anomalies	740 - 759	514	132	86	40
Certain Conditions Originating in the Perinatal Period	760 - 779	1,122	1	0	0
Symptoms, Signs, and Ill-Defined Conditions	780 - 799	696	1,248	2,426	2,817
Injury and Poisoning	800 - 999	922	3,939	3,750	5,233
Fractures, All Sites	800 - 829	320	1,056	1,010	2,716
Fracture of Neck of Femur	820	8	50	204	1,509
Poisonings	960 - 989	85	946	545	195
Certain Complications of Surgical and Medical Care	996 - 999	228	866	1,569	1,582
Supplementary Classifications	V01 - V85	266	26,183	1,536	3,102
Females with Deliveries	V27	26	25,356	45	0

*Excludes newborn infants.

Appendix Table 2
Number of Discharges* by First-listed Diagnosis and Sex, New Mexico, 2007
– Expanded Listing

Category of First-listed Diagnosis	ICD-9-CM Codes	Male	Female
Infectious and Parasitic Diseases	001 - 139	2,360	2,701
Septicemia	38	1,380	1,489
Neoplasms	140 - 239	2,854	4,327
Malignant Neoplasms	140 - 208, 230 - 234	2,501	2,680
Malignant Neoplasms of Large Intestine and Rectum	153 - 154, 197.5	357	388
Malignant Neoplasms of Trachea, Bronchus, and Lung	162, 176.4, 197.0, 197.3	296	272
Benign Neoplasms	210 - 229	245	1,508
Benign Neoplasms of Uterus	218 - 219	0	961
Endocrine, Nutritional and Metabolic Diseases, and Immunity Disorders	240 - 279	2,596	3,193
Diabetes Mellitus	250	1,288	1,226
Volume Depletion	276.5	666	919
Diseases of the Blood and Blood-Forming Organs	280 - 289	597	825
Anemias	280 - 285	294	519
Mental Disorders	290 - 319	6,853	6,392
Psychoses	290 - 299	4,850	4,835
Schizophrenic Disorders	295	1,230	712
Major Depressive Disorder	296.2 - 296.3	919	1,505
Diseases of the Nervous System and Sense Organs	320 - 389	1,164	1,338
Diseases of the Circulatory System	390 - 459	11,027	9,797
Essential Hypertension	401	126	222
Heart Disease	391 - 392.0, 393 - 398, 402, 404, 410 - 416, 420 - 429	7,719	6,395
Acute Myocardial Infarction	410	1,767	1,107
Coronary Atherosclerosis	414.0	1,851	996
Other Ischemic Heart Disease	411 - 413, 414.1 - 414.9	250	225
Cardiac Dysrhythmias	427	1,106	1,199
Congestive Heart Failure	428.0, 428.2 - 428.4	1,438	1,441
Cerebrovascular Disease	430 - 438	1,608	1,828

*Excludes newborn infants.

Appendix Table 2 (continued)
Number of Discharges* by First-listed Diagnosis and Sex, New Mexico, 2007
– Expanded Listing

Category of First-listed Diagnosis	ICD-9-CM Codes	Male	Female
Diseases of the Respiratory System	460 - 519	8,049	8,149
Acute Bronchitis and Bronchiolitis	466	876	748
Pneumonia	480 - 486	3,096	3,175
Chronic Bronchitis	491	864	1,003
Asthma	493	789	964
Diseases of the Digestive System	520 - 579	8,325	9,466
Appendicitis	540 - 543	1,050	902
Non-Infectious Enteritis and Colitis	555 - 558	487	775
Intestinal Obstruction	560	650	810
Diverticula of Intestine	562	517	671
Cholelithiasis	574	733	1,453
Acute Pancreatitis	577.0	735	756
Diseases of the Genitourinary System	580 - 629	2,602	6,711
Calculus of Kidney and Ureter	592	328	394
Urinary Tract Infection	599.0	490	1,183
Complications of Pregnancy, Childbirth, and the Puerperium	630 - 677	0	5,318
Diseases of the Skin and Subcutaneous Tissue	680 - 709	1,819	1,514
Cellulitis and Abscess	681 - 682	1,512	1,222
Diseases of the Musculoskeletal System and Connective Tissue	710 - 739	3,685	4,759
Osteoarthritis and Allied Disorders	715	1,431	2,192
Intervertebral Disc Disorders	722	608	586
Congenital Anomalies	740 - 759	446	326
Certain Conditions Originating in the Perinatal Period	760 - 779	657	466
Symptoms, Signs, and Ill-Defined Conditions	780 - 799	3,192	3,995
Injury and Poisoning	800 - 999	6,927	6,917
Fractures, All Sites	800 - 829	2,257	2,845
Fracture of Neck of Femur	820	563	1,208
Poisonings	960 - 989	766	1,005
Certain Complications of Surgical and Medical Care	996 - 999	2,108	2,137
Supplementary Classifications	V01 - V85	2,465	28,622
Females with Deliveries	V27	0	25,427

*Excludes newborn infants.

Appendix Table 3
Number of Discharges* by First-listed Diagnosis and Region, New Mexico, 2007
– Expanded Listing

Category of First-listed Diagnosis	ICD-9-CM Codes	NW	NE	Central	SE	SW
Infectious and Parasitic Diseases	001 - 139	949	796	1,305	1,081	930
Septicemia	38	538	486	666	695	484
Neoplasms	140 - 239	1,364	1,159	2,409	748	1,501
Malignant Neoplasms	140 - 208, 230 - 234	1,000	825	1,735	512	1,109
Malignant Neoplasms of Large Intestine and Rectum	153 - 154, 197.5	150	132	220	91	152
Malignant Neoplasms of Trachea, Bronchus, and Lung	162, 176.4, 197.0, 197.3	103	87	168	72	138
Benign Neoplasms	210 - 229	331	291	594	203	334
Benign Neoplasms of Uterus	218 - 219	164	181	323	132	161
Endocrine, Nutritional and Metabolic Diseases, and Immunity Disorders	240 - 279	1,021	821	1,471	1,149	1,327
Diabetes Mellitus	250	508	399	678	418	511
Volume Depletion	276.5	210	183	283	450	459
Diseases of the Blood and Blood-Forming Organs	280 - 289	227	199	421	234	341
Anemias	280 - 285	118	130	201	152	212
Mental Disorders	290 - 319	2,272	1,702	4,176	2,158	2,937
Psychoses	290 - 299	1,544	1,232	3,005	1,690	2,214
Schizophrenic Disorders	295	270	305	599	320	448
Major Depressive Disorder	296.2 - 296.3	445	317	696	196	770
Diseases of the Nervous System and Sense Organs	320 - 389	454	428	746	372	502
Diseases of the Circulatory System	390 - 459	3,713	2,782	6,051	2,807	5,471
Essential Hypertension	401	41	57	70	87	93
Heart Disease	391 - 392.0, 393 - 398, 402, 404, 410 - 416, 420 - 429	2,600	1,902	3,970	1,812	3,830
Acute Myocardial Infarction	410	646	396	830	351	651
Coronary Atherosclerosis	414.0	472	273	797	253	1,052
Other Ischemic Heart Disease	411 - 413, 414.1 - 414.9	98	60	66	80	171
Cardiac Dysrhythmias	427	418	365	588	326	608
Congestive Heart Failure	428.0, 428.2 - 428.4	444	331	810	522	772
Cerebrovascular Disease	430 - 438	591	458	1,152	496	739

*Excludes newborn infants.

Appendix Table 3 (continued)
Number of Discharges* by First-listed Diagnosis and Region, New Mexico, 2007
– Expanded Listing

Category of First-listed Diagnosis	ICD-9-CM Codes	NW	NE	Central	SE	SW
Diseases of the Respiratory System	460 - 519	2,831	2,487	4,205	3,267	3,408
Acute Bronchitis and Bronchiolitis	466	272	211	481	362	298
Pneumonia	480 - 486	1,070	1,041	1,511	1,165	1,484
Chronic Bronchitis	491	263	258	412	406	528
Asthma	493	271	236	480	453	313
Diseases of the Digestive System	520 - 579	3,222	2,857	5,347	2,537	3,828
Appendicitis	540 - 543	409	269	707	216	351
Non-Infectious Enteritis and Colitis	555 - 558	200	203	262	275	322
Intestinal Obstruction	560	239	255	411	203	352
Diverticula of Intestine	562	189	220	372	170	237
Cholelithiasis	574	423	281	696	264	522
Acute Pancreatitis	577.0	247	228	456	243	317
Diseases of the Genitourinary System	580 - 629	1,482	1,426	2,710	1,553	2,142
Calculus of Kidney and Ureter	592	129	111	172	117	193
Urinary Tract Infection	599.0	259	189	477	305	443
Complications of Pregnancy, Childbirth, and the Puerperium	630 - 677	928	635	1,914	763	1,078
Diseases of the Skin and Subcutaneous Tissue	680 - 709	587	474	1,032	555	685
Cellulitis and Abscess	681 - 682	470	391	833	475	565
Diseases of the Musculoskeletal System and Connective Tissue	710 - 739	1,665	1,083	2,906	977	1,813
Osteoarthritis and Allied Disorders	715	686	387	1,240	482	828
Intervertebral Disc Disorders	722	252	194	412	117	219
Congenital Anomalies	740 - 759	185	110	269	78	130
Certain Conditions Originating in the Perinatal Period	760 - 779	266	209	308	120	220
Symptoms, Signs, and Ill-Defined Conditions	780 - 799	1,275	1,110	1,814	1,264	1,724
Injury and Poisoning	800 - 999	2,851	2,323	4,473	1,698	2,499
Fractures, All Sites	800 - 829	1,029	866	1,654	630	923
Fracture of Neck of Femur	820	315	254	576	276	350
Poisonings	960 - 989	287	354	535	263	332
Certain Complications of Surgical and Medical Care	996 - 999	911	619	1,372	491	852
Supplementary Classifications	V01 - V85	5,759	3,689	11,259	4,249	6,131
Females with Deliveries	V27	4,715	3,083	8,911	3,755	4,963

*Excludes newborn infants.

Appendix Table 4
Rate of Discharges* by First-listed Diagnosis, New Mexico (2007) and U.S. (2006)
– Expanded Listing

Category of First-listed Diagnosis	ICD-9-CM Codes	Rate per 10,000 population	
		New Mexico Rate**	U.S. Rate
Infectious and Parasitic Diseases	001 - 139	25.1	36.5
Septicemia	38	14.1	17.8
Neoplasms	140 - 239	34.7	55.0
Malignant Neoplasms	140 - 208, 230 - 234	24.7	40.5
Malignant Neoplasms of Large Intestine and Rectum	153 - 154, 197.5	3.6	5.2
Malignant Neoplasms of Trachea, Bronchus, and Lung	162, 176.4, 197.0, 197.3	2.7	5.6
Benign Neoplasms	210 - 229	8.8	12.7
Benign Neoplasms of Uterus	218 - 219	5.0	7.1
Endocrine, Nutritional and Metabolic Diseases, and Immunity Disorders	240 - 279	28.5	55.8
Diabetes Mellitus	250	12.3	19.6
Volume Depletion	276.5	7.9	16.1
Diseases of the Blood and Blood-Forming Organs	280 - 289	7.1	15.1
Anemias	280 - 285	4.1	10.6
Mental Disorders	290 - 319	66.4	81.1
Psychoses	290 - 299	48.5	58.6
Schizophrenic Disorders	295	9.7	11.2
Major Depressive Disorder	296.2 - 296.3	12.0	15.4
Diseases of the Nervous System and Sense Organs	320 - 389	12.4	20.6
Diseases of the Circulatory System	390 - 459	101.4	206.6
Essential Hypertension	401	1.7	9.8
Heart Disease	391 - 392.0, 393 - 398, 402, 404, 410 - 416, 420 - 429	68.4	140.9
Acute Myocardial Infarction	410	13.7	21.7
Coronary Atherosclerosis	414.0	13.4	32.0
Other Ischemic Heart Disease	411 - 413, 414.1 - 414.9	2.2	5.4
Cardiac Dysrhythmias	427	11.4	25.9
Congestive Heart Failure	428.0, 428.2 - 428.4	14.2	36.9
Cerebrovascular Disease	430 - 438	16.9	29.8

*Excludes newborn infants.

**Rates are age-adjusted to the 2000 U.S. Standard Population.

Appendix Table 4 (continued)
Rate of Discharges* by First-listed Diagnosis, New Mexico (2007) and U.S. (2006)
– Expanded Listing

Category of First-listed Diagnosis	ICD-9-CM Codes	Rate per 10,000 population	
		New Mexico Rate**	U.S. Rate
Diseases of the Respiratory System	460 - 519	80.2	116.9
Acute Bronchitis and Bronchiolitis	466	8.1	7.3
Pneumonia	480 - 486	31.2	41.3
Chronic Bronchitis	491	9.0	17.2
Asthma	493	8.7	14.9
Diseases of the Digestive System	520 - 579	88.0	117.9
Appendicitis	540 - 543	9.8	10.7
Non-Infectious Enteritis and Colitis	555 - 558	6.3	11.9
Intestinal Obstruction	560	7.2	10.8
Diverticula of Intestine	562	5.8	10.5
Cholelithiasis	574	10.8	11.2
Acute Pancreatitis	577.0	7.5	7.8
Diseases of the Genitourinary System	580 - 629	46.8	66.2
Calculus of Kidney and Ureter	592	3.5	5.6
Urinary Tract Infection	599.0	8.4	16.0
Complications of Pregnancy, Childbirth, and the Puerperium	630 - 677	27.4	17.4
Diseases of the Skin and Subcutaneous Tissue	680 - 709	16.5	26.2
Cellulitis and Abscess	681 - 682	13.5	19.7
Diseases of the Musculoskeletal System and Connective Tissue	710 - 739	40.7	66.0
Osteoarthritis and Allied Disorders	715	17.1	25.3
Intervertebral Disc Disorders	722	5.8	10.9
Congenital Anomalies	740 - 759	3.8	6.5
Certain Conditions Originating in the Perinatal Period	760 - 779	5.6	6.7
Symptoms, Signs, and Ill-Defined Conditions	780 - 799	35.1	6.3
Injury and Poisoning	800 - 999	68.7	99.5
Fractures, All Sites	800 - 829	25.6	36.0
Fracture of Neck of Femur	820	9.0	11.1
Poisonings	960 - 989	8.8	9.1
Certain Complications of Surgical and Medical Care	996 - 999	20.6	30.6
Supplementary Classifications	V01 - V85	157.1	168.4
Females with Deliveries	V27	129.2	138.4

*Excludes newborn infants.

**Rates are age-adjusted to the 2000 U.S. Standard Population.

Appendix Table 5
Rate of Discharges* by First-listed Diagnosis and Age, New Mexico, 2007
– Expanded Listing

Category of First-listed Diagnosis	ICD-9-CM Codes	Rate per 10,000 population			
		< 15 Years	15-44 Years	45-64 Years	65+ Years
Infectious and Parasitic Diseases	001 - 139	14.9	10.8	25.6	89.2
Septicemia	38	1.9	4.2	16.2	64.3
Neoplasms	140 - 239	2.9	13.9	55.3	121.2
Malignant Neoplasms	140 - 208, 230 - 234	1.8	5.8	38.6	104.6
Malignant Neoplasms of Large Intestine and Rectum	153 - 154, 197.5	0.0	0.4	4.9	18.4
Malignant Neoplasms of Trachea, Bronchus, and Lung	162, 176.4, 197.0, 197.3	0.0	0.2	3.4	15.0
Benign Neoplasms	210 - 229	0.8	7.6	15.2	11.6
Benign Neoplasms of Uterus	218 - 219	0.0	5.3	9.6	0.6
Endocrine, Nutritional and Metabolic Diseases, and Immunity Disorders	240 - 279	19.0	15.3	31.7	83.9
Diabetes Mellitus	250	3.2	9.9	16.9	27.1
Volume Depletion	276.5	12.8	1.9	5.2	25.2
Diseases of the Blood and Blood-Forming Organs	280 - 289	3.6	3.2	6.6	26.7
Anemias	280 - 285	0.6	1.8	3.9	17.6
Mental Disorders	290 - 319	25.2	89.5	72.9	39.7
Psychoses	290 - 299	13.8	63.9	57.5	33.0
Schizophrenic Disorders	295	0.3	14.0	13.1	3.5
Major Depressive Disorder	296.2 - 296.3	3.7	16.0	14.1	8.3
Diseases of the Nervous System and Sense Organs	320 - 389	7.7	7.9	13.5	33.1
Diseases of the Circulatory System	390 - 459	1.8	15.6	121.8	526.6
Essential Hypertension	401	0.1	0.5	2.8	6.3
Heart Disease	391 - 392.0, 393 - 398, 402, 404, 410 - 416, 420 - 429	0.6	9.5	84.8	356.6
Acute Myocardial Infarction	410	0.0	1.5	21.4	65.7
Coronary Atherosclerosis	414.0	0.0	0.7	21.2	67.3
Other Ischemic Heart Disease	411 - 413, 414.1 - 414.9	0.0	0.4	4.0	9.4
Cardiac Dysrhythmias	427	0.2	1.6	10.9	64.2
Congestive Heart Failure	428.0, 428.2 - 428.4	0.0	1.3	13.0	84.3
Cerebrovascular Disease	430 - 438	0.2	1.9	16.7	96.4

*Excludes newborn infants.

Appendix Table 5 (continued)
Rate of Discharges* by First-listed Diagnosis and Age, New Mexico, 2007
– Expanded Listing

Category of First-listed Diagnosis	ICD-9-CM Codes	Rate per 10,000 population			
		< 15 Years	15-44 Years	45-64 Years	65+ Years
Diseases of the Respiratory System	460 - 519	95.4	19.4	66.1	290.3
Acute Bronchitis and Bronchiolitis	466	34.9	0.4	1.1	3.9
Pneumonia	480 - 486	24.0	7.0	26.0	134.7
Chronic Bronchitis	491	0.0	0.3	10.5	51.7
Asthma	493	18.8	3.6	7.6	11.4
Diseases of the Digestive System	520 - 579	25.6	60.0	107.4	247.3
Appendicitis	540 - 543	11.6	11.2	7.3	6.8
Non-Infectious Enteritis and Colitis	555 - 558	3.9	3.8	6.1	18.7
Intestinal Obstruction	560	1.2	2.0	7.7	34.1
Diverticula of Intestine	562	0.0	2.2	7.9	23.8
Cholelithiasis	574	0.3	10.5	12.2	26.7
Acute Pancreatitis	577.0	0.4	7.4	9.6	14.4
Diseases of the Genitourinary System	580 - 629	9.5	34.2	51.2	137.3
Calculus of Kidney and Ureter	592	0.1	3.6	5.5	5.3
Urinary Tract Infection	599.0	3.3	1.7	4.8	46.1
Complications of Pregnancy, Childbirth, and the Puerperium	630 - 677	0.2	64.0	0.5	0.0
Diseases of the Skin and Subcutaneous Tissue	680 - 709	8.5	12.3	21.1	34.6
Cellulitis and Abscess	681 - 682	7.3	10.3	17.9	26.1
Diseases of the Musculoskeletal System and Connective Tissue	710 - 739	3.3	13.4	59.3	164.8
Osteoarthritis and Allied Disorders	715	0.0	1.2	25.7	87.6
Intervertebral Disc Disorders	722	0.0	4.2	10.2	12.4
Congenital Anomalies	740 - 759	12.5	1.6	1.6	1.6
Certain Conditions Originating in the Perinatal Period	760 - 779	27.3	0.0	0.0	0.0
Symptoms, Signs, and Ill-Defined Conditions	780 - 799	16.9	15.1	46.1	113.6
Injury and Poisoning	800 - 999	22.4	47.7	71.3	211.1
Fractures, All Sites	800 - 829	7.8	12.8	19.2	109.5
Fracture of Neck of Femur	820	0.2	0.6	3.9	60.9
Poisonings	960 - 989	2.1	11.5	10.4	7.9
Certain Complications of Surgical and Medical Care	996 - 999	5.5	10.5	29.8	63.8
Supplementary Classifications	V01 - V85	6.5	317.1	29.2	125.1
Females with Deliveries	V27	0.6	307.1	0.9	0.0

*Excludes newborn infants.

Appendix Table 6
Rate of Discharges* by First-listed Diagnosis and Sex, New Mexico, 2007
– Expanded Listing

Category of First-listed Diagnosis	ICD-9-CM Codes	Rate per 10,000 population**	
		Male	Female
Infectious and Parasitic Diseases	001 - 139	25.3	24.9
Septicemia	38	15.1	13.4
Neoplasms	140 - 239	29.7	40.0
Malignant Neoplasms	140 - 208, 230 - 234	26.0	23.9
Malignant Neoplasms of Large Intestine and Rectum	153 - 154, 197.5	3.8	3.4
Malignant Neoplasms of Trachea, Bronchus, and Lung	162, 176.4, 197.0, 197.3	3.2	2.4
Benign Neoplasms	210 - 229	2.6	14.9
Benign Neoplasms of Uterus	218 - 219	0.0	9.8
Endocrine, Nutritional and Metabolic Diseases, and Immunity Disorders	240 - 279	27.1	29.7
Diabetes Mellitus	250	13.2	11.6
Volume Depletion	276.5	7.1	8.6
Diseases of the Blood and Blood-Forming Organs	280 - 289	6.5	7.7
Anemias	280 - 285	3.3	4.8
Mental Disorders	290 - 319	69.5	63.3
Psychoses	290 - 299	49.2	47.7
Schizophrenic Disorders	295	12.4	7.0
Major Depressive Disorder	296.2 - 296.3	9.1	14.8
Diseases of the Nervous System and Sense Organs	320 - 389	12.2	12.7
Diseases of the Circulatory System	390 - 459	118.8	86.6
Essential Hypertension	401	1.3	2.0
Heart Disease	391 - 392.0, 393 - 398, 402, 404, 410 - 416, 420 - 429	82.5	56.3
Acute Myocardial Infarction	410	18.2	9.6
Coronary Atherosclerosis	414.0	19.0	8.6
Other Ischemic Heart Disease	411 - 413, 414.1 - 414.9	2.6	2.0
Cardiac Dysrhythmias	427	12.2	10.6
Congestive Heart Failure	428.0, 428.2 - 428.4	16.2	12.6
Cerebrovascular Disease	430 - 438	17.9	16.1

*Excludes newborn infants.

**Rates are age-adjusted to the 2000 U.S. Standard Population.

Appendix Table 6 (continued)
Rate of Discharges* by First-listed Diagnosis and Sex, New Mexico, 2007
– Expanded Listing

Category of First-listed Diagnosis	ICD-9-CM Codes	Rate per 10,000 population**	
		Male	Female
Diseases of the Respiratory System	460 - 519	86.5	75.1
Acute Bronchitis and Bronchiolitis	466	8.7	7.4
Pneumonia	480 - 486	34.2	28.9
Chronic Bronchitis	491	9.5	8.7
Asthma	493	8.0	9.3
Diseases of the Digestive System	520 - 579	87.2	88.6
Appendicitis	540 - 543	10.7	8.9
Non-Infectious Enteritis and Colitis	555 - 558	5.1	7.3
Intestinal Obstruction	560	7.1	7.3
Diverticula of Intestine	562	5.5	5.9
Cholelithiasis	574	7.7	14.0
Acute Pancreatitis	577.0	7.7	7.3
Diseases of the Genitourinary System	580 - 629	28.6	64.9
Calculus of Kidney and Ureter	592	3.3	3.9
Urinary Tract Infection	599.0	5.7	10.7
Complications of Pregnancy, Childbirth, and the Puerperium	630 - 677	0.0	55.3
Diseases of the Skin and Subcutaneous Tissue	680 - 709	18.8	14.3
Cellulitis and Abscess	681 - 682	15.5	11.6
Diseases of the Musculoskeletal System and Connective Tissue	710 - 739	38.3	42.5
Osteoarthritis and Allied Disorders	715	14.9	19.1
Intervertebral Disc Disorders	722	6.2	5.5
Congenital Anomalies	740 - 759	4.4	3.3
Certain Conditions Originating in the Perinatal Period	760 - 779	6.4	4.7
Symptoms, Signs, and Ill-Defined Conditions	780 - 799	33.6	36.6
Injury and Poisoning	800 - 999	72.5	63.9
Fractures, All Sites	800 - 829	24.4	25.4
Fracture of Neck of Femur	820	6.8	10.5
Poisonings	960 - 989	7.8	9.8
Certain Complications of Surgical and Medical Care	996 - 999	21.8	19.8
Supplementary Classifications	V01 - V85	26.7	290.6
Females with Deliveries	V27	0.0	261.9

*Excludes newborn infants.

**Rates are age-adjusted to the 2000 U.S. Standard Population.

Appendix Table 7
Rate of Discharges* by First-listed Diagnosis and Region, New Mexico, 2007
– Expanded Listing

Category of First-listed Diagnosis	ICD-9-CM Codes	Rate per 10,000 population**				
		NW	NE	Central	SE	SW
Infectious and Parasitic Diseases	001 - 139	25.0	25.3	20.8	40.8	21.7
Septicemia	38	14.6	15.0	10.5	26.2	11.0
Neoplasms	140 - 239	34.9	34.1	37.6	29.0	34.5
Malignant Neoplasms	140 - 208, 230 - 234	25.8	23.8	26.8	19.2	24.7
Malignant Neoplasms of Large Intestine and Rectum	153 - 154, 197.5	4.1	3.9	3.5	3.3	3.4
Malignant Neoplasms of Trachea, Bronchus, and Lung	162, 176.4, 197.0, 197.3	2.8	2.6	2.7	2.6	3.0
Benign Neoplasms	210 - 229	8.2	9.0	9.5	8.5	8.5
Benign Neoplasms of Uterus	218 - 219	4.1	5.6	5.2	5.8	4.4
Endocrine, Nutritional and Metabolic Diseases, and Immunity Disorders	240 - 279	26.2	26.1	23.3	43.8	31.0
Diabetes Mellitus	250	12.9	12.5	10.6	16.4	12.0
Volume Depletion	276.5	5.5	6.0	4.6	16.8	10.7
Diseases of the Blood and Blood-Forming Organs	280 - 289	5.9	6.3	6.8	8.8	8.1
Anemias	280 - 285	3.1	4.1	3.3	5.7	5.1
Mental Disorders	290 - 319		55.8	66.5	88.9	73.8
Psychoses	290 - 299	37.0	40.1	47.7	69.5	55.8
Schizophrenic Disorders	295	6.5	9.9	9.4	13.0	11.6
Major Depressive Disorder	296.2 - 296.3	10.5	10.2	10.9	7.7	19.1
Diseases of the Nervous System and Sense Organs	320 - 389	11.5	13.7	11.8	14.3	12.2
Diseases of the Circulatory System	390 - 459	100.9	83.5	95.5	102.6	122.9
Essential Hypertension	401	1.0	1.7	1.1	3.2	2.1
Heart Disease	391 - 392.0, 393 - 398, 402, 404, 410 - 416, 420 - 429	70.6	56.6	62.3	66.1	85.5
Acute Myocardial Infarction	410	17.2	11.2	12.8	12.6	14.6
Coronary Atherosclerosis	414.0	12.0	7.5	12.1	9.3	23.0
Other Ischemic Heart Disease	411 - 413, 414.1 - 414.9	2.6	1.6	1.0	3.0	3.8
Cardiac Dysrhythmias	427	11.5	11.5	9.4	12.1	13.7
Congestive Heart Failure	428.0, 428.2 - 428.4	12.9	10.2	13.0	18.7	17.3
Cerebrovascular Disease	430 - 438	16.5	14.1	18.4	17.9	16.9

*Excludes newborn infants.

**Rates are age-adjusted to the 2000 U.S. Standard Population.

Appendix Table 7 (continued)
Rate of Discharges* by First-listed Diagnosis and Region, New Mexico, 2007
– Expanded Listing

Category of First-listed Diagnosis	ICD-9-CM Codes	Rate per 10,000 population**				
		NW	NE	Central	SE	SW
Diseases of the Respiratory System	460 - 519	73.6	81.2	67.3	121.9	79.0
Acute Bronchitis and Bronchiolitis	466	6.2	8.0	7.7	13.3	7.2
Pneumonia	480 - 486	28.7	33.8	24.2	43.5	34.4
Chronic Bronchitis	491	7.2	7.7	6.5	14.7	11.7
Asthma	493	6.5	7.8	7.7	17.6	7.5
Diseases of the Digestive System	520 - 579	82.4	89.1	84.8	99.0	91.4
Appendicitis	540 - 543	9.7	9.1	11.4	8.6	8.6
Non-Infectious Enteritis and Colitis	555 - 558	5.2	6.4	4.2	10.7	7.7
Intestinal Obstruction	560	6.6	7.6	6.5	7.6	8.1
Diverticula of Intestine	562	5.1	6.6	5.9	6.5	5.5
Cholelithiasis	574	10.8	8.8	11.0	10.4	12.6
Acute Pancreatitis	577.0	6.2	7.4	7.2	9.9	7.8
Diseases of the Genitourinary System	580 - 629	38.7	45.7	43.3	62.2	52.1
Calculus of Kidney and Ureter	592	3.0	3.5	2.7	4.9	4.7
Urinary Tract Infection	599.0	7.4	6.3	7.8	11.3	10.2
Complications of Pregnancy, Childbirth, and the Puerperium	630 - 677	22.5	23.7	31.0	30.4	26.9
Diseases of the Skin and Subcutaneous Tissue	680 - 709	14.9	14.7	16.2	22.4	16.5
Cellulitis and Abscess	681 - 682	11.8	12.1	13.0	19.3	13.6
Diseases of the Musculoskeletal System and Connective Tissue	710 - 739	42.7	32.2	45.4	36.9	41.2
Osteoarthritis and Allied Disorders	715	17.8	11.1	19.1	17.7	18.2
Intervertebral Disc Disorders	722	6.1	5.9	6.4	4.7	5.3
Congenital Anomalies	740 - 759	4.2	4.1	4.3	2.9	3.2
Certain Conditions Originating in the Perinatal Period	760 - 779	5.9	8.3	4.9	4.4	5.3
Symptoms, Signs, and Ill-Defined Conditions	780 - 799	32.7	34.5	28.5	48.4	40.5
Injury and Poisoning	800 - 999	73.4	74.2	71.2	65.0	59.2
Fractures, All Sites	800 - 829	27.8	27.9	26.8	22.9	21.6
Fracture of Neck of Femur	820	9.5	8.2	9.5	9.6	8.1
Poisonings	960 - 989	6.9	11.6	8.4	10.7	8.2
Certain Complications of Surgical and Medical Care	996 - 999	23.0	18.7	21.4	19.2	20.0
Supplementary Classifications	V01 - V85	140.3	133.6	180.8	167.1	147.7
Females with Deliveries	V27	112.6	114.9	143.3	148.9	121.0

*Excludes newborn infants.

**Rates are age-adjusted to the 2000 U.S. Standard Population.

Appendix Table 8
Average Length of Stay* by First-listed Diagnosis and Age, New Mexico, 2007
– Expanded Listing

Category of First-listed Diagnosis	ICD-9-CM Codes	< 15 Years	15-44 Years	45-64 Years	65+ Years
Infectious and Parasitic Diseases	001 - 139	3.7	5.8	7.9	6.6
Septicemia	38	8.3	8.3	9.1	6.7
Neoplasms	140 - 239	7.9	4.3	4.7	6.0
Malignant Neoplasms	140 - 208, 230 - 234	10.6	6.7	5.8	6.5
Malignant Neoplasms of Large Intestine and Rectum	153 - 154, 197.5	0.0	7.6	7.3	8.5
Malignant Neoplasms of Trachea, Bronchus, and Lung	162, 176.4, 197.0, 197.3	9.0	6.8	6.4	7.1
Benign Neoplasms	210 - 229	4.6	2.5	2.5	3.4
Benign Neoplasms of Uterus	218 - 219	0.0	2.1	2.1	2.4
Endocrine, Nutritional and Metabolic Diseases, and Immunity Disorders	240 - 279	3.5	3.6	4.5	4.7
Diabetes Mellitus	250	3.0	3.6	5.5	6.3
Volume Depletion	276.5	2.1	2.2	4.0	4.0
Diseases of the Blood and Blood-Forming Organs	280 - 289	3.4	3.6	4.3	4.2
Anemias	280 - 285	3.2	3.1	3.5	3.4
Mental Disorders	290 - 319	23.4	13.0	11.3	18.1
Psychoses	290 - 299	20.7	9.6	10.6	19.6
Schizophrenic Disorders	295	19.8	14.1	19.9	52.0
Major Depressive Disorder	296.2 - 296.3	20.7	8.2	6.3	9.7
Diseases of the Nervous System and Sense Organs	320 - 389	3.6	4.2	5.4	5.8
Diseases of the Circulatory System	390 - 459	6.4	4.2	4.1	4.3
Essential Hypertension	401	5.0	3.3	2.4	2.6
Heart Disease	391 - 392.0, 393 - 398, 402, 404, 410 - 416, 420 - 429	5.5	3.9	3.8	4.2
Acute Myocardial Infarction	410	0.0	2.9	4.0	4.5
Coronary Atherosclerosis	414.0	0.0	2.3	3.1	3.5
Other Ischemic Heart Disease	411 - 413, 414.1 - 414.9	0.0	1.8	1.9	2.3
Cardiac Dysrhythmias	427	2.9	2.8	2.9	3.4
Congestive Heart Failure	428.0, 428.2 - 428.4	0.0	3.7	4.5	4.5
Cerebrovascular Disease	430 - 438	14.6	5.7	5.4	4.2

*Excludes newborn infants.

Appendix Table 8 (continued)
Average Length of Stay* by First-listed Diagnosis and Age, New Mexico, 2007
– Expanded Listing

Category of First-listed Diagnosis	ICD-9-CM Codes	< 15 Years	15-44 Years	45-64 Years	65+ Years
Diseases of the Respiratory System	460 - 519	3.0	4.2	5.6	5.4
Acute Bronchitis and Bronchiolitis	466	2.9	2.4	2.5	3.3
Pneumonia	480 - 486	3.2	4.0	5.2	5.0
Chronic Bronchitis	491	7.0	4.2	3.7	4.5
Asthma	493	2.4	2.7	4.4	4.6
Diseases of the Digestive System	520 - 579	3.3	3.3	4.3	4.8
Appendicitis	540 - 543	3.1	2.1	3.4	5.4
Non-Infectious Enteritis and Colitis	555 - 558	2.5	3.6	4.0	4.6
Intestinal Obstruction	560	4.2	5.6	5.8	6.0
Diverticula of Intestine	562	0.0	4.0	4.3	4.0
Cholelithiasis	574	1.8	3.1	3.5	4.8
Acute Pancreatitis	577.0	5.7	4.4	5.6	6.0
Diseases of the Genitourinary System	580 - 629	3.3	2.4	3.0	4.1
Calculus of Kidney and Ureter	592	3.3	1.9	2.3	4.1
Urinary Tract Infection	599.0	2.9	2.4	3.7	4.1
Complications of Pregnancy, Childbirth, and the Puerperium	630 - 677	2.6	3.1	14.2	0.0
Diseases of the Skin and Subcutaneous Tissue	680 - 709	2.8	4.5	5.2	6.2
Cellulitis and Abscess	681 - 682	3.0	3.7	4.5	4.9
Diseases of the Musculoskeletal System and Connective Tissue	710 - 739	4.4	3.5	3.9	4.0
Osteoarthritis and Allied Disorders	715	0.0	3.5	3.5	3.9
Intervertebral Disc Disorders	722	0.0	2.6	2.3	3.2
Congenital Anomalies	740 - 759	6.7	4.4	4.1	4.3
Certain Conditions Originating in the Perinatal Period	760 - 779	7.4	1.8	0.0	0.0
Symptoms, Signs, and Ill-Defined Conditions	780 - 799	2.5	2.0	2.1	2.6
Injury and Poisoning	800 - 999	3.4	4.2	5.2	5.3
Fractures, All Sites	800 - 829	2.7	5.1	5.2	5.4
Fracture of Neck of Femur	820	4.1	5.8	5.9	6.0
Poisonings	960 - 989	1.6	2.5	3.2	3.6
Certain Complications of Surgical and Medical Care	996 - 999	6.9	5.9	6.3	5.9
Supplementary Classifications	V01 - V85	3.5	2.4	9.4	13.1
Females with Deliveries	V27	2.4	2.2	4.1	0.0

*Excludes newborn infants.

Appendix Table 9
Average Length of Stay* by First-listed Diagnosis and Sex, New Mexico, 2007
– Expanded Listing

Category of First-listed Diagnosis	ICD-9-CM Codes	Male	Female
Infectious and Parasitic Diseases	001 - 139	6.8	6.3
Septicemia	38	8.1	7.2
Neoplasms	140 - 239	6.3	5.0
Malignant Neoplasms	140 - 208, 230 - 234	6.5	6.3
Malignant Neoplasms of Large Intestine and Rectum	153 - 154, 197.5	8.0	8.3
Malignant Neoplasms of Trachea, Bronchus, and Lung	162, 176.4, 197.0, 197.3	6.9	7.0
Benign Neoplasms	210 - 229	4.3	2.8
Benign Neoplasms of Uterus	218 - 219	0.0	2.1
Endocrine, Nutritional and Metabolic Diseases, and Immunity Disorders	240 - 279	4.8	4.0
Diabetes Mellitus	250	5.6	4.4
Volume Depletion	276.5	3.0	3.4
Diseases of the Blood and Blood-Forming Organs	280 - 289	4.4	4.0
Anemias	280 - 285	3.5	3.6
Mental Disorders	290 - 319	15.5	11.9
Psychoses	290 - 299	11.5	11.3
Schizophrenic Disorders	295	15.1	22.7
Major Depressive Disorder	296.2 - 296.3	8.8	8.4
Diseases of the Nervous System and Sense Organs	320 - 389	7.4	6.4
Diseases of the Circulatory System	390 - 459	4.2	4.4
Essential Hypertension	401	2.6	3.0
Heart Disease	391 - 392.0, 393 - 398, 402, 404, 410 - 416, 420 - 429	3.9	4.3
Acute Myocardial Infarction	410	4.2	4.4
Coronary Atherosclerosis	414.0	3.1	3.5
Other Ischemic Heart Disease	411 - 413, 414.1 - 414.9	2.1	2.1
Cardiac Dysrhythmias	427	3.1	3.4
Congestive Heart Failure	428.0, 428.2 - 428.4	4.4	4.6
Cerebrovascular Disease	430 - 438	4.9	4.4

*Excludes newborn infants.

Appendix Table 9 (continued)
Average Length of Stay* by First-listed Diagnosis and Sex, New Mexico, 2007
– Expanded Listing

Category of First-listed Diagnosis	ICD-9-CM Codes	Male	Female
Diseases of the Respiratory System	460 - 519	4.8	4.9
Acute Bronchitis and Bronchiolitis	466	2.9	3.0
Pneumonia	480 - 486	4.6	4.7
Chronic Bronchitis	491	4.3	4.3
Asthma	493	2.8	3.9
Diseases of the Digestive System	520 - 579	4.5	4.4
Appendicitis	540 - 543	3.0	2.8
Non-Infectious Enteritis and Colitis	555 - 558	4.3	4.2
Intestinal Obstruction	560	5.6	6.1
Diverticula of Intestine	562	4.7	4.7
Cholelithiasis	574	4.2	3.6
Acute Pancreatitis	577.0	5.5	5.0
Diseases of the Genitourinary System	580 - 629	4.1	3.1
Calculus of Kidney and Ureter	592	2.4	2.7
Urinary Tract Infection	599.0	4.3	3.9
Complications of Pregnancy, Childbirth, and the Puerperium	630 - 677	0.0	3.4
Diseases of the Skin and Subcutaneous Tissue	680 - 709	5.2	5.4
Cellulitis and Abscess	681 - 682	4.2	4.6
Diseases of the Musculoskeletal System and Connective Tissue	710 - 739	4.1	4.3
Osteoarthritis and Allied Disorders	715	3.7	3.8
Intervertebral Disc Disorders	722	2.6	2.9
Congenital Anomalies	740 - 759	5.8	6.1
Certain Conditions Originating in the Perinatal Period	760 - 779	7.1	8.0
Symptoms, Signs, and Ill-Defined Conditions	780 - 799	2.5	2.6
Injury and Poisoning	800 - 999	5.5	5.1
Fractures, All Sites	800 - 829	5.5	5.2
Fracture of Neck of Femur	820	6.2	6.0
Poisonings	960 - 989	2.8	2.9
Certain Complications of Surgical and Medical Care	996 - 999	6.2	6.2
Supplementary Classifications	V01 - V85	12.8	3.2
Females with Deliveries	V27	0.0	2.2

*Excludes newborn infants.

Appendix Table 10
Average Length of Stay* by First-listed Diagnosis and Region, New Mexico, 2007
– Expanded Listing

Category of First-listed Diagnosis	ICD-9-CM Codes	NW	NE	Central	SE	SW
Infectious and Parasitic Diseases	001 - 139	7.4	6.7	7.4	5.0	6.3
Septicemia	38	8.6	7.5	9.2	5.7	7.3
Neoplasms	140 - 239	5.9	5.1	5.5	4.9	5.8
Malignant Neoplasms	140 - 208, 230 - 234	6.8	6.0	6.3	5.8	6.6
Malignant Neoplasms of Large Intestine and Rectum	153 - 154, 197.5	8.7	6.9	7.7	8.1	9.2
Malignant Neoplasms of Trachea, Bronchus, and Lung	162, 176.4, 197.0, 197.3	7.1	6.3	6.8	6.3	7.8
Benign Neoplasms	210 - 229	3.3	2.8	2.9	2.8	3.3
Benign Neoplasms of Uterus	218 - 219	2.1	2.3	2.0	2.3	2.1
Endocrine, Nutritional and Metabolic Diseases, and Immunity Disorders	240 - 279	4.9	4.8	4.7	3.3	4.2
Diabetes Mellitus	250	5.3	6.0	5.1	3.7	4.9
Volume Depletion	276.5	3.6	3.1	3.4	2.6	3.6
Diseases of the Blood and Blood-Forming Organs	280 - 289	4.1	4.3	4.5	3.7	4.0
Anemias	280 - 285	3.4	4.1	3.8	3.3	3.3
Mental Disorders	290 - 319	13.6	22.2	12.3	11.1	13.1
Psychoses	290 - 299	10.2	22.8	10.3	7.8	10.3
Schizophrenic Disorders	295	15.6	41.4	13.0	11.1	14.7
Major Depressive Disorder	296.2 - 296.3	8.8	8.0	6.7	10.7	9.7
Diseases of the Nervous System and Sense Organs	320 - 389	4.9	15.2	5.6	5.0	4.8
Diseases of the Circulatory System	390 - 459	4.3	4.3	4.4	3.9	4.4
Essential Hypertension	401	2.5	2.6	3.2	2.7	3.0
Heart Disease	391 - 392.0, 393 - 398, 402, 404, 410 - 416, 420 - 429	4.1	3.9	4.2	3.7	4.3
Acute Myocardial Infarction	410	4.1	4.1	4.3	3.5	5.0
Coronary Atherosclerosis	414.0	3.6	3.0	3.4	2.9	3.2
Other Ischemic Heart Disease	411 - 413, 414.1 - 414.9	1.9	2.1	2.1	1.9	2.3
Cardiac Dysrhythmias	427	3.3	3.1	3.3	2.8	3.4
Congestive Heart Failure	428.0, 428.2 - 428.4	4.6	4.3	4.3	4.5	4.8
Cerebrovascular Disease	430 - 438	4.4	4.8	4.8	4.4	4.7

*Excludes newborn infants.

Appendix Table 10 (continued)
Average Length of Stay* by First-listed Diagnosis and Region, New Mexico, 2007
– Expanded Listing

Category of First-listed Diagnosis	ICD-9-CM Codes	NW	NE	Central	SE	SW
Diseases of the Respiratory System	460 - 519	5.0	4.9	5.4	4.1	4.9
Acute Bronchitis and Bronchiolitis	466	3.1	2.8	3.0	2.7	2.9
Pneumonia	480 - 486	4.5	4.7	4.9	4.1	4.9
Chronic Bronchitis	491	4.1	4.2	4.3	4.0	4.6
Asthma	493	3.0	4.1	3.1	3.5	3.4
Diseases of the Digestive System	520 - 579	4.7	4.4	4.5	3.8	4.6
Appendicitis	540 - 543	3.1	3.0	2.8	2.8	2.9
Non-Infectious Enteritis and Colitis	555 - 558	5.2	4.6	4.9	2.9	4.1
Intestinal Obstruction	560	6.5	5.5	5.9	4.7	6.3
Diverticula of Intestine	562	4.3	4.6	4.5	4.7	5.6
Cholelithiasis	574	4.8	3.7	3.4	3.2	4.0
Acute Pancreatitis	577.0	6.1	5.0	5.6	4.2	5.0
Diseases of the Genitourinary System	580 - 629	3.4	3.4	3.5	3.0	3.4
Calculus of Kidney and Ureter	592	2.7	3.7	2.4	2.1	2.3
Urinary Tract Infection	599.0	4.0	3.7	4.1	3.7	4.2
Complications of Pregnancy, Childbirth, and the Puerperium	630 - 677	3.7	3.4	4.0	2.2	3.0
Diseases of the Skin and Subcutaneous Tissue	680 - 709	5.7	5.6	5.8	4.2	4.7
Cellulitis and Abscess	681 - 682	4.3	4.3	4.8	4.0	4.2
Diseases of the Musculoskeletal System and Connective Tissue	710 - 739	3.9	5.0	4.3	4.2	3.8
Osteoarthritis and Allied Disorders	715	3.5	3.8	3.7	4.4	3.8
Intervertebral Disc Disorders	722	2.7	2.5	3.3	2.7	2.2
Congenital Anomalies	740 - 759	6.4	4.7	6.3	5.6	5.9
Certain Conditions Originating in the Perinatal Period	760 - 779	8.4	8.6	5.9	4.3	9.3
Symptoms, Signs, and Ill-Defined Conditions	780 - 799	2.8	2.4	2.6	2.2	2.6
Injury and Poisoning	800 - 999	5.8	5.0	5.5	4.9	5.0
Fractures, All Sites	800 - 829	5.6	5.5	5.3	5.5	4.9
Fracture of Neck of Femur	820	5.7	6.7	5.3	6.8	6.3
Poisonings	960 - 989	3.4	2.3	3.2	2.1	2.7
Certain Complications of Surgical and Medical Care	996 - 999	6.7	5.3	6.5	5.6	6.1
Supplementary Classifications	V01 - V85	4.2	3.9	4.2	2.9	4.2
Females with Deliveries	V27	2.2	2.3	2.3	1.9	2.1

*Excludes newborn infants.

New Mexico Health Policy Commission
2055 South Pacheco Street, Suite 200
Santa Fe, New Mexico 87505
Phone: (505) 827-6201
Fax: (505) 424-3222
www.hpc.state.nm.us