

2008 HOSPITAL INPATIENT DISCHARGE DATA



University of New Mexico Hospital

Photo Courtesy of University of New Mexico Health Sciences Center



**New Mexico
Health Policy Commission
September 2009**



THE NEW MEXICO HEALTH POLICY COMMISSION

Governor Bill Richardson

Commissioners

Frank Hesse, MD, Chairman

Dawn Brooks, MBA-HC

Jerry Harrison, PhD

Karen Kotch, PA

Eric Kraska, MD

Kim Maxwell

Robert Romero, PT

Susan Trujillo, MAT

Management

Sam Howarth, PhD, Director

Elisha Leyba-Tercero, MBA, Economist

Terry Reusser, MBA, IS Mgt, IT Manager

Peggy Schummers, Office Manager

Staff

Lisa Marie Gomez, Management Analyst

Reina Guillen, Management Analyst

Peter Haggard, IT Database Administrator

Pat Mente, MS Ed, IT Database Administrator

Report Author: Elisha Leyba-Tercero

ACKNOWLEDGEMENTS

The 2008 Hospital Inpatient Discharge Data Report was produced through the joint efforts of the New Mexico Health Policy Commission (HPC) and the New Mexico Department of Health (DOH). The HPC would like to specifically thank the Epidemiology and Response Division of DOH for their work on the specific categories of disease and injury for this report.

Hospital Inpatient Discharge Data Report Team Members

Health Policy Commission: Peter Haggard, Elisha Leyba-Tercero, Pat Mente, and Terry Reusser.

Department of Health: Corazon Halasan, Emily Hancock, Glenda Hubbard, Michael Landen, Tierney Murphy, Nina Shah, and Brad Whorton.

Sources of Data

New Mexico Hospital Inpatient Discharge Data: All New Mexico general and specialty hospitals are annually required to report hospital inpatient discharge data to the HPC. The HPC maintains the Hospital Inpatient Discharge Database (HIDD). The 2008 New Mexico data used in this report was generated from the HIDD.

United States Hospital Inpatient Discharge Data: U.S. data used for comparison with New Mexico State data was provided by the National Center for Health Statistics' July 30, 2008 *National Health Statistics Reports*. The report presents the most current nationally representative data on inpatient care, excluding newborns, in the U.S. Data are from the 2006 National Hospital Discharge Survey, the longest continuously running nationally representative survey of hospital utilization.

State Population Estimates: State population estimates used for the denominator in hospitalization rates were generated by the Bureau of Business and Economic Research (BBER), University of New Mexico. The BBER evaluates all input data and employs a housing unit-based methodology, validated by building permits and birth/death records. Population denominators for 2007 were used since 2008 data were not yet available. Rates were expressed per 10,000 person-years and age-adjusted to the 2000 U.S. standard population, when indicated.

Definitions: Definitions for diagnoses and procedures presented in this report may be found at <http://icd9.chrisendres.com>.

TABLE OF CONTENTS

EXECUTIVE SUMMARY	1
NEW MEXICO HEALTH AND HUMAN SERVICES REGIONS	3
NEW MEXICO HOSPITALS REPORTING HOSPITAL INPATIENT DISCHARGE DATA IN 2008.....	4
OVERALL HOSPITAL INPATIENT DISCHARGES	5
Percent Distribution of Hospital Discharges by Average Length of Stay and Age	5
Number, Rate, and Average Length of Stay for Discharges by Age, Region and Gender	6
Hospital Inpatient Discharge Rates by Age and Gender	7
Hospital Inpatient Discharges by First-listed Diagnosis and Age.....	8
Hospital Inpatient Discharges by First-listed Diagnosis and Gender	9
Hospital Inpatient Discharges by First-listed Diagnosis and Region.....	10
Hospital Inpatient Discharge Rates by First-listed Diagnosis	11
Hospital Inpatient Discharge Rates by First-listed Diagnosis and Age	12
Hospital Inpatient Discharge Rates by First-listed Diagnosis and Gender	13
Hospital Inpatient Discharge Rates by First-listed Diagnosis and Region	14
All-listed Procedures by Procedure Category and Age	15
All-Listed Procedures by Procedure Category and Gender.....	17
All-listed Procedures by Procedure Category and Region	19
SPECIFIC CATEGORIES OF DISEASE AND INJURY	21
Asthma	21
Diabetes	24
Influenza and Pneumonia.....	28
Injury	30
Mental Disorders	34

APPENDIX TABLES

- Appendix Table 1: Number of Discharges by First-listed Diagnosis and Age, New Mexico, 2008 – Expanded Listing
- Appendix Table 2: Number of Discharges by First-listed Diagnosis and Gender, New Mexico, 2008 – Expanded Listing
- Appendix Table 3: Number of Discharges by First-listed Diagnosis and Region, New Mexico, 2008 – Expanded Listing
- Appendix Table 4: Rate of Discharges by First-listed Diagnosis, New Mexico (2008) and U.S. (2006) – Expanded Listing
- Appendix Table 5: Rate of Discharges by First-listed Diagnosis and Age, New Mexico, 2008 – Expanded Listing
- Appendix Table 6: Rate of Discharges by First-listed Diagnosis and Gender, New Mexico, 2008 – Expanded Listing
- Appendix Table 7: Rate of Discharges by First-listed Diagnosis and Region, New Mexico, 2008 – Expanded Listing
- Appendix Table 8: Average Length of Stay by First-listed Diagnosis and Age, New Mexico, 2008 – Expanded Listing
- Appendix Table 9: Average Length of Stay by First-listed Diagnosis and Gender, New Mexico, 2008 – Expanded Listing
- Appendix Table 10: Average Length of Stay by First-listed Diagnosis and Region, New Mexico, 2008 – Expanded Listing

EXECUTIVE SUMMARY

The New Mexico Health Information System (HIS), administered by the New Mexico Health Policy Commission (HPC), was established in 1989 pursuant to the Health Information System Act, NMSA 1978 Section 24-14A-1 thru Section 24-14A-10. The purpose of the HIS is to collect, analyze, and disseminate health data and information for use by public and private entities in health planning and policy development. The HPC gives the highest priority to the collection of data to support informed health care decision-making and purchases throughout the state.

Pursuant to the HIS Act, the HPC maintains the Hospital Inpatient Discharge Database (HIDD). This report is based on data generated from the HIDD. The hospital inpatient diagnoses and procedures contained in the database were coded using the International Classification of Diseases, Ninth Revision, Clinical Modification (ICD-9 CM). General and specialty hospitals in the State are annually required to report hospital inpatient discharge data to the HPC. Federal facilities are not required to report HIDD data to the HPC. Therefore, data from Indian Health Service (IHS) facilities, military hospitals and the Veteran's Administration Hospital are not included. However, the HPC is exploring ways to access IHS and Veteran's Administration Hospital data.

An inpatient discharge occurs when a patient is admitted overnight to a hospital and leaves that hospital. Thus, an individual who is transferred from hospital A to hospital B would be included in the discharges from hospital A with a second discharge from hospital B.

This report presents overall New Mexico hospital inpatient discharges as well as discharges for specific categories, which include asthma, diabetes, influenza and pneumonia, injury, and mental disorders. In 2008, 38 general and 13 specialty hospitals reported hospital inpatient discharge data to the HPC. These 51 non-federal hospitals reported a total of 174,193 discharges for New Mexico State residents. Duplicate records, out-of-state or unknown zip codes, and discharges with unknown gender, age, or first-listed (primary) diagnosis were excluded. Discharges of newborns were also excluded to be consistent with federal reporting standards.

Of the 174,193 reported discharges, approximately 61% were among females and 39% were among males. Thirty-five percent of all discharges occurred among the 15-44 age group. The highest discharge rate by region was 1,097.3 per 10,000 population in the Northwest Region, and the lowest rate was 824.7 in the Central Region.

When looking at specific categories in New Mexico for 2008:

- Asthma was the primary diagnosis in 1,897 hospitalization cases. The largest number of asthma discharges occurred among inpatients less than 15 years of age.
- Diabetes accounted for 2,674 discharges when looking at primary diagnosis, with a state rate of 13.0 discharges per 10,000 population.
- There were 6,561 hospital discharges for which pneumonia or influenza was listed as the primary diagnosis. More than half of these hospitalizations occurred in adults 65 and older.
- Injuries were the primary cause for 9,984 hospitalizations. The highest rate of injury discharges occurred among the 65 and older age group at 149.9 per 10,000 population.
- Of the mental disorders listed, patients with any diagnosis of psychoses accounted for the highest number (22,238) and rate (119.8 per 10,000) of inpatient hospital discharges.

Disclaimer

This report is intended to be a reference document for researchers and planners and does not include interpretation or hypotheses. Although data is verified with the submitting hospital, all data and information presented in this report are as submitted by reporting hospitals to the HPC. The original data is the responsibility of the submitting hospital. The HPC assumes no responsibility for any use made of, or conclusions drawn from the data. The data in this report should be interpreted based on these limitations.

In addition to the above mentioned limitations, it is important to note the differences between the data reported in the 2007 report and this 2008 report. As a result of late or no reporting of data by hospitals in 2007, no data was included for Advanced Care Hospital of Southern New Mexico, Physician's Medical Center of Santa Fe, and Roswell Regional Hospital. First and fourth quarter data were not included for Alta Vista Regional Hospital, and third and fourth quarter data were not included for Kindred Hospital of Albuquerque and Mesilla Valley Hospital. The data is complete for 2008.

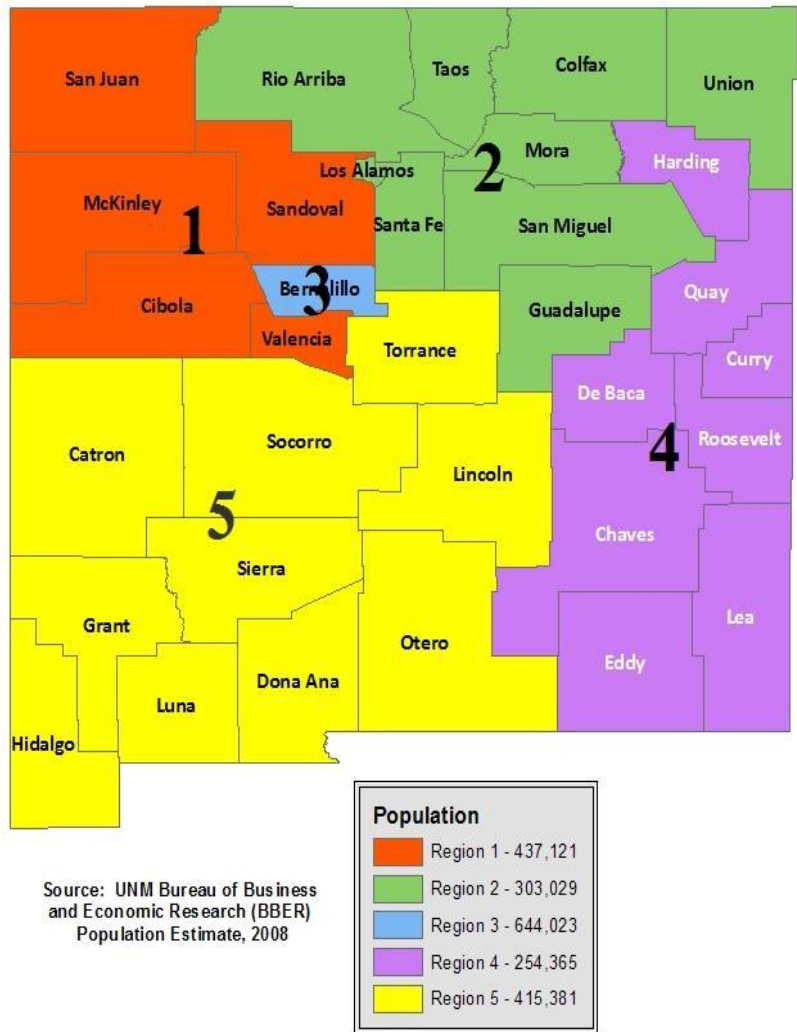
In both reports, duplicate records, out-of-state or unknown zip codes, and discharges with unknown gender, age, or first-listed (primary) diagnosis were excluded. Discharges of newborns were also excluded to be consistent with federal reporting standards. The 2008 counts for these excluded categories were as follows:

- Newborns 26,732
- Out-of-state or unknown zip codes 7,861
- Duplicate records 214
- Unknown primary diagnosis 44
- Unknown gender 7
- Unknown age 3

While the data presented in this report is static, the HPC intends to conduct longitudinal studies on key indicators in future years.

NEW MEXICO HEALTH AND HUMAN SERVICES REGIONS

The data in this report is presented by age, gender, and Health and Human Services (HHS) regions. Below is a map of the HHS regions.



Source: UNM Bureau of Business and Economic Research (BBER) Population Estimate, 2008

NEW MEXICO HOSPITALS REPORTING HOSPITAL INPATIENT DISCHARGE DATA IN 2008

General Hospitals	Region	Specialty Hospitals	Region
Cibola General Hospital	1	San Juan Regional Medical Center	1
Rehoboth McKinley Christian Health	1	NM Behavioral Health Institute	2
San Juan Regional Rehabilitation Hospital	1	Lovelace Rehabilitation Hospital	3
Presbyterian Rio Rancho Emergency Center	1	HealthSouth Rehabilitation Hospital	3
St. Vincent Hospital	2	Kindred Hospital Albuquerque	3
Union County General Hospital	2	Specialty Hospital of Albuquerque	3
Alta Vista Regional Hospital	2	Turquoise Lodge	3
Espanola Hospital	2	UNM Children's Psychiatric Center	3
Guadalupe County Hospital	2	UNM Psychiatric Center	3
Holy Cross Hospital	2	NM Rehabilitation Center	4
Los Alamos Medical Center	2	Mesilla Valley Hospital	5
Miners' Colfax Medical Center	2	Peak Behavioral Health Services	5
Physicians Medical Center of Santa Fe	2	Rehabilitation Hospital of Southern NM	5
Presbyterian Hospital	3		
Presbyterian Kaseman Hospital	3		
Lovelace Medical Center	3		
Lovelace Westside Hospital	3		
Lovelace Women's Hospital	3		
Heart Hospital of New Mexico	3		
UNM Hospital	3		
Roosevelt General Hospital	4		
Roswell Regional Hospital	4		
Lea Regional Hospital	4		
Artesia General Hospital	4		
Carlsbad Medical Center	4		
Dr. Dan C Trigg Memorial Hospital	4		
Eastern NM Medical Center	4		
Plains Regional Medical Center - Clovis	4		
Nor-Lea General Hospital	4		
Mimbres Memorial Hospital	5		
Memorial Medical Center	5		
Mountain View Regional Medical Center	5		
Gerald Champion Regional Medical Center	5		
Gila Regional Medical Center	5		
Lincoln County Medical Center	5		
Advanced Care Hospital of Southern NM	5		
Sierra Vista Hospital	5		
Socorro General Hospital	5		

Note: Does not include federal hospitals.

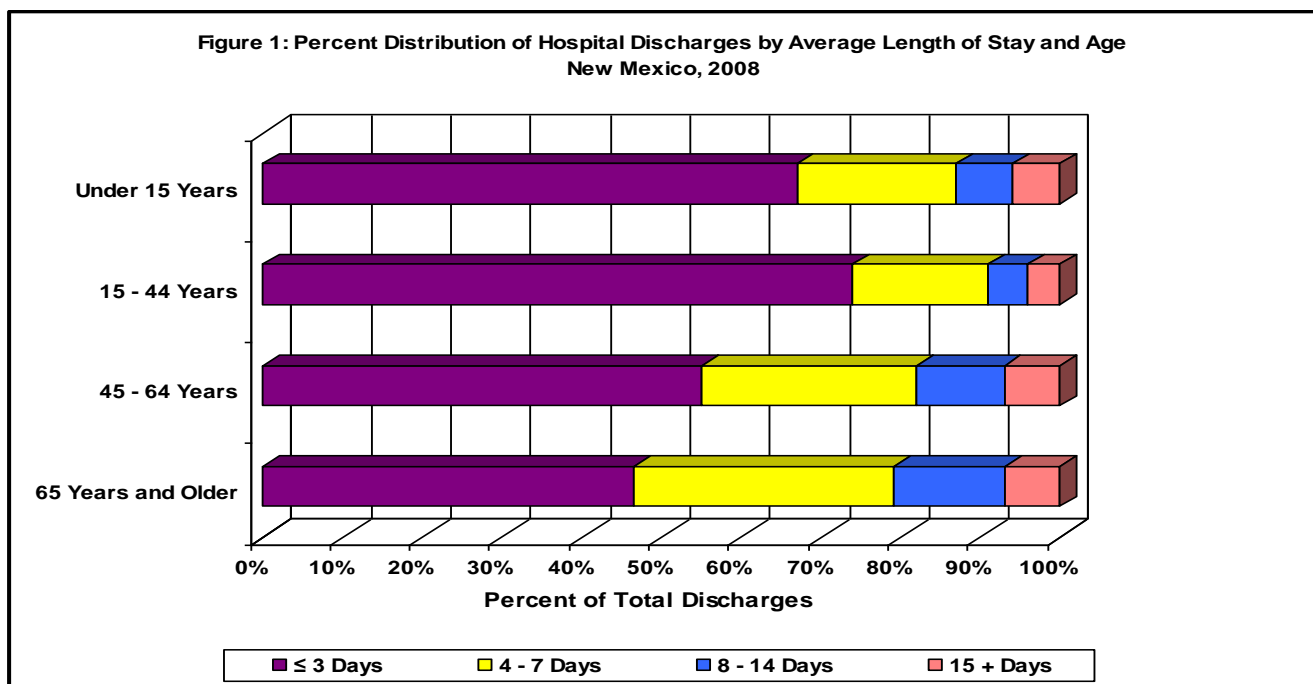
OVERALL HOSPITAL INPATIENT DISCHARGES

This section provides HIDD numbers, rates, and average lengths of stay by age, gender and region. Included in this section are a series of tables by first-listed diagnosis and a series of tables by all-listed procedures. The first-listed diagnosis is the first recorded final diagnosis on the patient's medical record. All-listed procedures are all recorded procedures on the patient's medical record.

Percent Distribution of Hospital Discharges by Average Length of Stay and Age

Figure 1 indicates the percent distribution of hospital inpatient discharges by average length of stay and age for New Mexico in 2008 as follows:

- Sixty-seven percent of patients less than 15 years of age, 74% of patients 15-44 years of age, 55% of patients 45-64 years of age, and 47% of patients 65 and older were hospitalized for 3 days or less;
- Twenty percent of patients less than 15 years of age, 17% of patients 15-44 years of age, 27% of patients 45-64 years of age, and 33% of patients 65 and older were hospitalized for 4 to 7 days;
- Seven percent of patients less than 15 years of age, 5% of patients 15-44 years of age, 11% of patients 45-64 years of age, and 14% of patients 65 and older were hospitalized for 8-14 days; and
- Six percent of patients less than 15 years of age, 4% of patients 15-44 years of age, 7% of patients 45-64 years of age, and 7% of patients 65 and older were hospitalized for 15 days or more.



Number, Rate, and Average Length of Stay for Discharges by Age, Region and Gender

As indicated in Table 1, 174,193 inpatients were discharged from non-federal general and specialty hospitals in New Mexico in 2008. Of those inpatients:

- Approximately 61% were female and 39% were male;
- Thirty-four percent were aged 65 and older, 24% were 45-64 years of age, 35% were 15-44 years of age, and 7% were less than 15 years of age;
- Males 15-44 years of age had the longest average length of stay at 7.7 days while females aged 65 and older had the longest average length of stay at 5.6 days;
- The highest discharge rate by region was 1,097.3 per 10,000 population in the Southeast Region while the lowest rate was 824.7 in the Central Region; and
- The average length of stay ranged from 4.3 days in the Southeast Region to 5.5 days in the Central Region.

Table 1: Number, Rate and Average Length of Stay for Discharges by Age, Region and Gender

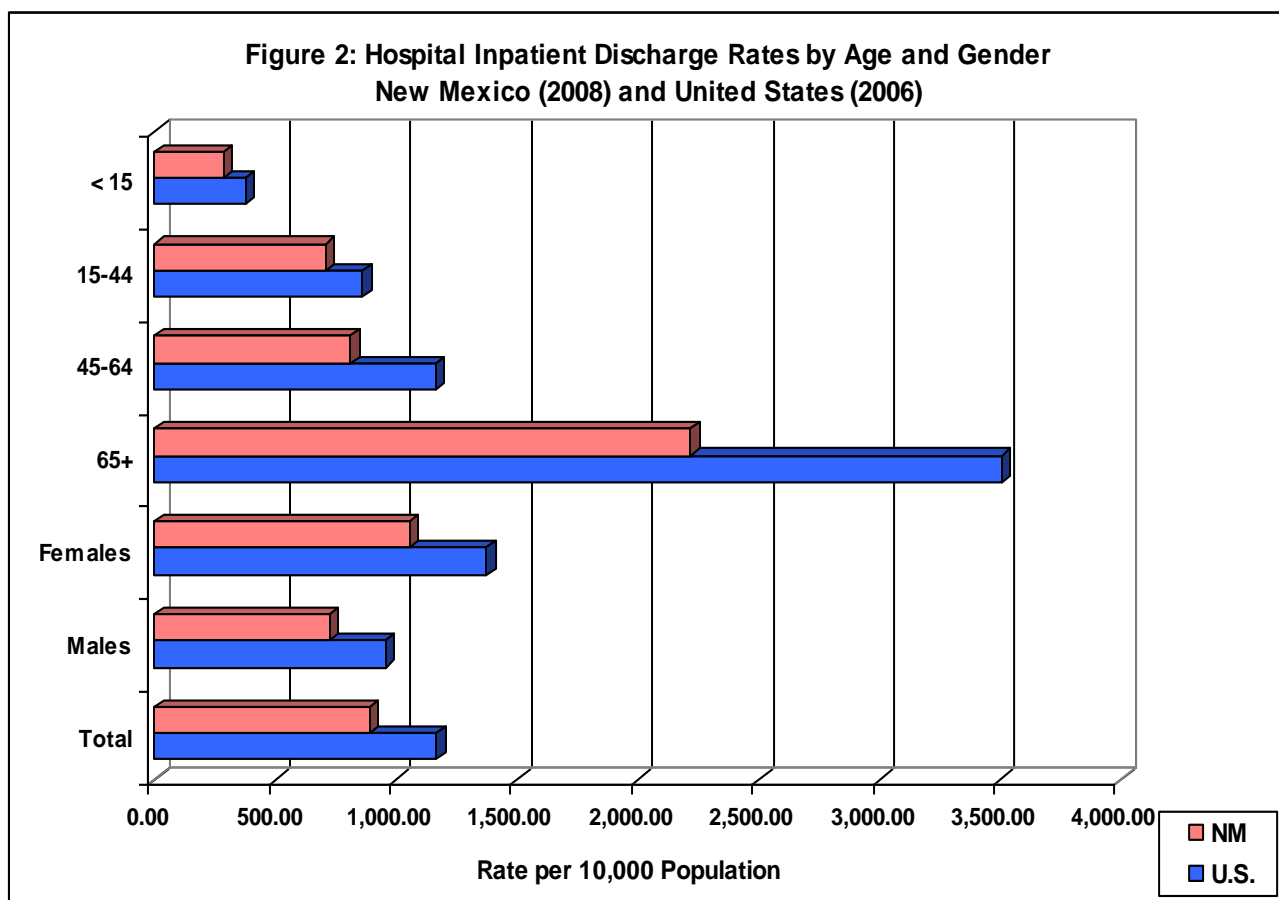
Number of Discharges By Age Group	Total	Males	Females
All Ages	174,193	67,481	106,712
< 15	11,610	6,407	5,203
15-44	60,962	14,848	46,114
45-64	42,623	20,711	21,912
65+	58,998	25,515	33,483
Number of Discharges By Region	Total	Males	Females
Northwest Region	32,168	12,579	19,589
Northeast Region	26,363	10,885	15,478
Central Region	52,286	19,430	32,856
Southeast Region	27,246	9,991	17,255
Southwest Region	36,130	14,596	21,534
Rates of Discharge By Age Group	Total	Males	Females
All Ages	848.1	668.0	1,022.4
< 15	286.1	310.8	260.6
15-44	711.3	344.5	1,082.4
45-64	811.4	813.5	809.5
65+	2,219.9	2,155.8	2,271.3
Rates of Discharge By Region	Total	Males	Females
All Regions	889.9	723.3	1,055.2
Northwest Region	845.9	703.7	980.3
Northeast Region	928.7	789.8	1,076.1
Central Region	824.7	637.8	1,007.1
Southeast Region	1,097.3	853.2	1,340.7
Southwest Region	902.3	765.0	1,042.5
Average Length of Stay By Age Group	Total	Males	Females
All Ages	5.2	6.3	4.5
< 15	5.5	5.8	5.2
15-44	4.5	7.7	3.4
45-64	5.6	6.2	5.1
65+	5.7	5.7	5.6
Average Length of Stay By Region	Total	Males	Females
All Regions	5.2	6.3	4.5
Northwest Region	5.4	6.6	4.7
Northeast Region	5.4	6.5	4.6
Central Region	5.5	6.7	4.8
Southeast Region	4.3	5.0	3.8
Southwest Region	5.2	6.2	4.5

Note: Except for age-specific rates, all rates are age-adjusted to the 2000 U.S. Standard Population.

Hospital Inpatient Discharge Rates by Age and Gender

As shown in Figure 2 below:

- The total hospital discharge rate per 10,000 population was 889.9 for New Mexico in 2008 and 1,168.7 for the U.S. in 2006;
- The discharge rate was lower for both males (723.3) and females (1,055.2) in New Mexico than males (954.9) and females (1,375.3) in the U.S.; and
- The largest age-specific difference occurred among those aged 65 years and older. The New Mexico rate was 2,219.9 while the U.S. rate was 3,507.9.



Note: Except for age-specific rates, all rates are age-adjusted to the 2000 U.S. Standard Population

Hospital Inpatient Discharges by First-listed Diagnosis and Age

As indicated in Table 2, the top three reasons for hospitalization among all age groups in New Mexico in 2008 were Supplementary Classifications (31,474), Diseases of the Circulatory System (21,106), and Diseases of the Digestive System (18,123). The top three reasons for hospitalization by age group were as follows:

- For inpatients less than 15 years of age, Diseases of the Respiratory System (3,912), Certain Conditions Originating in the Perinatal Period (1,093), and Diseases of the Digestive System (972);
- For inpatients 15-44 years of age, Supplementary Classifications (26,061), Mental Disorders (7,493), and Diseases of the Digestive System (4,913);
- For inpatients 45-64 years of age, Diseases of the Circulatory System (6,304), Diseases of the Digestive System (5,998), and Injury and Poisoning (3,891); and
- For inpatients 65 years and older, Diseases of the Circulatory System (13,286), Diseases of the Respiratory System (7,905), and Diseases of the Digestive System (6,240).

Table 2: Number of Discharges by First-Listed Diagnosis and Age

Category of First-listed Diagnosis	All Ages	< 15 Years	15 - 44 Years	45 - 64 Years	65 + Years
Infectious and Parasitic Diseases	5,762	516	974	1,546	2,726
Neoplasms	7,375	114	1,175	2,947	3,139
Endocrine, Nutritional and Metabolic Diseases, and Immunity Disorders	5,972	706	1,312	1,726	2,228
Diseases of the Blood and Blood-Forming Organs	1,477	204	240	368	665
Mental Disorders	13,109	837	7,493	3,834	945
Diseases of the Nervous System and Sense Organs	2,745	286	784	772	903
Diseases of the Circulatory System	21,106	73	1,443	6,304	13,286
Diseases of the Respiratory System	17,166	3,912	1,657	3,692	7,905
Diseases of the Digestive System	18,123	972	4,913	5,998	6,240
Diseases of the Genitourinary System	9,568	382	2,791	2,750	3,645
Complications of Pregnancy, Childbirth, and Puerperium	4,601	10	4,571	20	0
Diseases of the Skin and Subcutaneous Tissue	3,573	353	1,101	1,214	905
Diseases of the Musculoskeletal System and Connective Tissue	9,147	136	1,137	3,513	4,361
Congenital Anomalies	708	459	110	97	42
Certain Conditions Originating in the Perinatal Period	1,095	1,093	2	0	0
Symptoms, Signs, and Ill-Defined Conditions	6,763	503	1,110	2,316	2,834
Injury and Poisoning	14,427	749	4,086	3,891	5,701
Supplementary Classifications (Includes Females with Deliveries)	31,474	305	26,061	1,635	3,473

Hospital Inpatient Discharges by First-listed Diagnosis and Gender

As indicated in Table 3, the top five reasons for hospitalization by the first-listed diagnosis for males in New Mexico in 2008 were Diseases of the Circulatory System (11,198), Diseases of the Digestive System (8,470), Diseases of the Respiratory System (8,360), Injury and Poisoning (7,038), and Mental Disorders (6,918).

The top five reasons for hospitalization by the first-listed diagnosis for females were Supplementary Classification, which includes Females with Deliveries (28,822), Diseases of the Circulatory System (9,908), Diseases of the Digestive System (9,653), Diseases of the Respiratory System (8,806), and Injury and Poisoning (7,389).

Table 3: Number of Discharges by First-listed Diagnosis and Gender

Category of First-listed Diagnosis	Total	Males	Females
Infectious and Parasitic Diseases	5,762	2,772	2,990
Neoplasms	7,375	2,931	4,444
Endocrine, Nutritional and Metabolic Diseases, and Immunity Disorders	5,972	2,735	3,237
Diseases of the Blood and Blood-Forming Organs	1,477	634	843
Mental Disorders	13,109	6,918	6,191
Diseases of the Nervous System and Sense Organs	2,745	1,303	1,442
Diseases of the Circulatory System	21,106	11,198	9,908
Diseases of the Respiratory System	17,166	8,360	8,806
Diseases of the Digestive System	18,123	8,470	9,653
Diseases of the Genitourinary System	9,568	2,657	6,911
Complications of Pregnancy, Childbirth, and Puerperium	4,601	0	4,601
Diseases of the Skin and Subcutaneous Tissue	3,573	1,992	1,581
Diseases of the Musculoskeletal System and Connective Tissue	9,147	3,967	5,180
Congenital Anomalies	708	368	340
Certain Conditions Originating in the Perinatal Period	1,095	588	507
Symptoms, Signs, and Ill-Defined Conditions	6,763	2,898	3,865
Injury and Poisoning	14,427	7,038	7,389
Supplementary Classifications (Includes Females with Deliveries)	31,474	2,652	28,822

Hospital Inpatient Discharges by First-listed Diagnosis and Region

As indicated in Table 4, the top three reasons for hospitalization by first-listed diagnosis and region in New Mexico in 2008 were as follows:

- Northwest Region - Supplementary Classifications (5,763), Diseases of the Circulatory System (4,040), and Diseases of the Digestive System (3,336);
- Northeast Region – Supplementary Classifications (4,135), Diseases of the Digestive System (3,117), and Diseases of the Circulatory System (3,055);
- Central Region – Supplementary Classifications (10,926), Diseases of the Circulatory System (6,048), and Diseases of the Digestive System (5,327);
- Southeast Region – Supplementary Classifications (4,804), Diseases of the Respiratory System (3,445), and Diseases of the Digestive System (2,669); and
- Southwest Region – Supplementary Classifications (5,846), Diseases of the Circulatory System (5,326), and Diseases of the Digestive System (3,674).

Table 4: Number of Discharges by First-listed Diagnosis and Region

Category of First-listed Diagnosis	Total	NW	NE	Central	SE	SW
Infectious and Parasitic Diseases	5,762	1,067	1,049	1,666	1,048	932
Neoplasms	7,375	1,406	1,166	2,494	834	1,475
Endocrine, Nutritional and Metabolic Diseases, and Immunity Disorders	5,972	976	934	1,487	1,217	1,358
Diseases of the Blood and Blood-Forming Organs	1,477	216	199	465	263	334
Mental Disorders	13,109	2,199	1,584	3,897	2,270	3,159
Diseases of the Nervous System and Sense Organs	2,745	523	430	841	391	560
Diseases of the Circulatory System	21,106	4,040	3,055	6,048	2,637	5,326
Diseases of the Respiratory System	17,166	3,175	2,850	4,120	3,445	3,576
Diseases of the Digestive System	18,123	3,336	3,117	5,327	2,669	3,674
Diseases of the Genitourinary System	9,568	1,553	1,477	2,630	1,833	2,075
Complications of Pregnancy, Childbirth, and Puerperium	4,601	838	514	1,526	865	858
Diseases of the Skin and Subcutaneous Tissue	3,573	623	562	1,078	582	728
Diseases of the Musculoskeletal System and Connective Tissue	9,147	1,864	1,353	3,078	1,110	1,742
Congenital Anomalies	708	161	111	251	67	118
Certain Conditions Originating in the Perinatal Period	1,095	269	178	322	153	173
Symptoms, Signs, and Ill-Defined Conditions	6,763	1,240	1,172	1,610	1,234	1,507
Injury and Poisoning	14,427	2,919	2,477	4,519	1,824	2,688
Supplementary Classifications (Includes Females with Deliveries)	31,474	5,763	4,135	10,926	4,804	5,846

Hospital Inpatient Discharge Rates by First-listed Diagnosis

Table 5 provides overall hospital inpatient discharge rates by first-listed diagnosis for New Mexico in 2008 and the U.S. in 2006. Data highlights include the following:

- The first-listed diagnosis with the highest rate in New Mexico was Supplementary Classifications at 160.7 per 10,000 population while the U.S. rate for the same diagnosis was 168.4;
- The first-listed diagnosis with the highest rate in the U.S. was Diseases of the Circulatory System at 206.6 while the New Mexico rate for the same diagnosis was 110.0;
- While most U.S. rates were higher than New Mexico rates, New Mexico's rate for Complications of Pregnancy, Childbirth and the Puerperium (23.4) was higher than the U.S. rate (17.4); and
- The largest difference between New Mexico and U.S. hospital discharge rates by first-listed diagnosis occurred for Symptoms, Signs and Ill-Defined Conditions. The New Mexico rate was 34.3 while the U.S. rate was 6.3.

Table 5: Hospital Discharge Rates per 10,000 Population by First-listed Diagnosis

Category of First-listed Diagnosis	Rate per 10,000 Population	
	NM Rate	U.S. Rate
Infectious and Parasitic Diseases	30.4	36.5
Neoplasms	35.3	55.0
Endocrine, Nutritional and Metabolic Diseases, and Immunity Disorders	30.6	55.8
Diseases of the Blood and Blood-Forming Organs	7.6	15.1
Mental Disorders	63.9	81.1
Diseases of the Nervous System and Sense Organs	14.0	20.6
Diseases of the Circulatory System	110.0	206.6
Diseases of the Respiratory System	91.7	116.9
Diseases of the Digestive System	90.9	117.9
Diseases of the Genitourinary System	49.6	66.2
Complications of Pregnancy, Childbirth, and Puerperium	23.4	17.4
Diseases of the Skin and Subcutaneous Tissue	18.1	26.2
Diseases of the Musculoskeletal System and Connective Tissue	43.7	66.0
Congenital Anomalies	3.7	6.5
Certain Conditions Originating in the Perinatal Period	6.0	6.7
Symptoms, Signs, and Ill-Defined Conditions	34.3	6.3
Injury and Poisoning	75.9	99.5
Supplementary Classifications (Includes Females with Deliveries)	160.7	168.4

Note: Rates are age-adjusted to the 2000 U.S. Standard Population.

Hospital Inpatient Discharge Rates by First-listed Diagnosis and Age

As indicated in Table 6, the highest discharge rates per 10,000 population by first-listed diagnosis and age group for New Mexico in 2008 were as follows:

- For inpatients less than 15 years of age, Diseases of the Respiratory System (96.4), Certain Conditions Originating in the Perinatal Period (26.9), and Diseases of the Digestive System (24.0);
- For inpatients 15-44 years of age, Supplementary Classifications (304.1), Mental Disorders (87.4), and Diseases of the Digestive System (57.3);
- For inpatients 45-64 years of age, Diseases of the Circulatory System (120.0), Diseases of the Digestive System (114.2), and Injury and Poisoning (74.1); and
- For inpatients 65 years and older, Diseases of the Circulatory System (499.9), Diseases of the Respiratory System (297.4), and Diseases of the Digestive System (234.8).

Table 6: Hospital Discharge Rates per 10,000 Population by First-listed Diagnosis and Age

Category of First-listed Diagnosis	Rate per 10,000 Population				
	Total	< 15 Years	15 - 44 Years	45 - 64 Years	65 + Years
Infectious and Parasitic Diseases	30.4	12.7	11.4	29.4	102.6
Neoplasms	35.3	2.8	13.7	56.1	118.1
Endocrine, Nutritional and Metabolic Diseases, and Immunity Disorders	30.6	17.4	15.3	32.9	83.8
Diseases of the Blood and Blood-Forming Organs	7.6	5.0	2.8	7.0	25.0
Mental Disorders	63.9	20.6	87.4	73.0	35.6
Diseases of the Nervous System and Sense Organs	14.0	7.0	9.1	14.7	34.0
Diseases of the Circulatory System	110.0	1.8	16.8	120.0	499.9
Diseases of the Respiratory System	91.7	96.4	19.3	70.3	297.4
Diseases of the Digestive System	90.9	24.0	57.3	114.2	234.8
Diseases of the Genitourinary System	49.6	9.4	32.6	52.4	137.1
Complications of Pregnancy, Childbirth, and Puerperium	23.4	0.2	53.3	0.4	0.0
Diseases of the Skin and Subcutaneous Tissue	18.1	8.7	12.8	23.1	34.1
Diseases of the Musculoskeletal System and Connective Tissue	43.7	3.4	13.3	66.9	164.1
Congenital Anomalies	3.7	11.3	1.3	1.8	1.6
Certain Conditions Originating in the Perinatal Period	6.0	26.9	0.0	0.0	0.0
Symptoms, Signs, and Ill-Defined Conditions	34.3	12.4	13.0	44.1	106.6
Injury and Poisoning	75.9	18.5	47.7	74.1	214.5
Supplementary Classifications (Includes Females with Deliveries)	160.7	7.5	304.1	31.1	130.7

Hospital Inpatient Discharge Rates by First-listed Diagnosis and Gender

As indicated in Table 7, the top five discharge rates by the first-listed diagnosis for males in New Mexico in 2008 were attributable to Diseases of the Circulatory system (123.8), Diseases of the Respiratory System (95.2), Diseases of the Digestive System (88.5), Injury and Poisoning (74.7), and Mental Disorders (68.2).

The top five discharge rates by the first-listed diagnosis for females were attributable to Supplementary Classifications, which includes Females with Deliveries (293.7), Diseases of the Circulatory System (97.6), Diseases of the Digestive System (92.7), Diseases of the Respiratory System (88.5), and Injury and Poisoning (75.0).

Table 7: Hospital Discharge Rates per 10,000 Population by First-listed Diagnosis and Gender

Category of First-listed Diagnosis	Rates per 10,000 Population		
	Total	Male	Female
Infectious and Parasitic Diseases	30.4	31.3	29.6
Neoplasms	35.3	30.3	40.5
Endocrine, Nutritional and Metabolic Diseases, and Immunity Disorders	30.6	29.0	31.7
Diseases of the Blood and Blood-Forming Organs	7.6	6.9	8.2
Mental Disorders	63.9	68.2	59.6
Diseases of the Nervous System and Sense Organs	14.0	13.8	14.2
Diseases of the Circulatory System	110.0	123.8	97.6
Diseases of the Respiratory System	91.7	95.2	88.5
Diseases of the Digestive System	90.9	88.5	92.7
Diseases of the Genitourinary System	49.6	30.3	68.2
Complications of Pregnancy, Childbirth, and Puerperium	23.4	0.0	47.2
Diseases of the Skin and Subcutaneous Tissue	18.1	20.6	15.6
Diseases of the Musculoskeletal System and Connective Tissue	43.7	40.1	46.4
Congenital Anomalies	3.7	3.8	3.5
Certain Conditions Originating in the Perinatal Period	6.0	6.4	5.7
Symptoms, Signs, and Ill-Defined Conditions	34.3	31.1	37.1
Injury and Poisoning	75.9	74.7	75.0
Supplementary Classifications (Includes Females with Deliveries)	160.7	29.4	293.7

Note: Rates are age-adjusted to the 2000 U.S. Standard Population.

Hospital Inpatient Discharge Rates by First-listed Diagnosis and Region

Table 8 provides hospital inpatient discharge rates per 10,000 population by first-listed diagnosis and region for New Mexico in 2008. Among all five regions:

- The Southeast Region had the highest rate for Diseases of the Respiratory System (139.3) followed by the Northeast Region (109.1), Southwest Region (92.8), Northwest Region (89.2), and Central Region (67.2);
- The Southwest Region had the highest rate for Diseases of the Circulatory System (134.4) followed by the Northwest Region (116.9), Northeast Region (109.8), Southeast Region (107.8), and Central Region (94.1); and
- The Northeast Region had the highest rate for Injury and Poisoning (89.2) followed by the Northwest Region (79.3), Southeast Region (76.3), Central Region (72.4), and Southwest Region (69.9).

Table 8: Hospital Discharge Rates per 10,000 Population by First-listed Diagnosis and Region

Category of First-listed Diagnosis	Rates per 10,000 Population					
	Total	NW	NE	Central	SE	SW
Infectious and Parasitic Diseases	30.4	30.3	37.8	26.7	43.4	23.6
Neoplasms	35.3	35.6	35.9	36.3	32.8	35.0
Endocrine, Nutritional and Metabolic Diseases, and Immunity Disorders	30.6	25.7	32.8	23.6	49.1	34.2
Diseases of the Blood and Blood-Forming Organs	7.6	5.8	6.9	7.4	10.6	8.5
Mental Disorders	63.9	50.5	51.1	60.6	91.6	77.0
Diseases of the Nervous System and Sense Organs	14.0	13.3	14.7	13.2	16.3	14.0
Diseases of the Circulatory System	110.0	116.9	109.8	94.1	107.8	134.4
Diseases of the Respiratory System	91.7	89.2	109.1	67.2	139.3	92.8
Diseases of the Digestive System	90.9	87.9	103.8	82.4	106.7	90.4
Diseases of the Genitourinary System	49.6	42.8	50.9	41.5	75.5	53.8
Complications of Pregnancy, Childbirth, and Puerperium	23.4	20.0	19.6	25.0	33.8	20.8
Diseases of the Skin and Subcutaneous Tissue	18.1	15.9	19.3	16.8	23.7	18.5
Diseases of the Musculoskeletal System and Connective Tissue	43.7	47.3	41.5	44.6	42.5	41.7
Congenital Anomalies	3.7	3.8	4.4	4.2	2.7	2.9
Certain Conditions Originating in the Perinatal Period	6.0	6.7	7.9	5.8	6.3	4.5
Symptoms, Signs, and Ill-Defined Conditions	34.3	33.7	38.6	25.2	49.5	38.1
Injury and Poisoning	75.9	79.3	89.2	72.4	76.3	69.9
Supplementary Classifications (Includes Females with Deliveries)	160.7	141.3	155.6	177.8	189.3	142.0

Note: Rates are age-adjusted to the 2000 U.S. Standard Population.

All-listed Procedures by Procedure Category and Age

Table 9 indicates the number of all-listed procedures by procedure category and age for New Mexico in 2008. Excluding the “No Procedure” category, the top five all-listed procedures for each age group were as follows:

For inpatients less than 15 years of age:

- Miscellaneous Diagnostic and Therapeutic Procedures and New Technologies (2,391),
- Operations of the Digestive System (829),
- Operations of the Nervous System (625),
- Spinal tap (477), and
- Appendectomy, Excluding Incidental (453).

For inpatients 15-44 years of age:

- Obstetrical Procedures (26,780),
- Miscellaneous Diagnostic and Therapeutic Procedures and New Technologies (9,758),
- Artificial Rupture of Membranes (8,440),
- Repair of Current Obstetric Laceration (7,958), and
- Cesarean Section (6,243).

For inpatients 45-64 years of age:

- Miscellaneous Diagnostic and Therapeutic Procedures and New Technologies (12,681),
- Operations on the Cardiovascular System (7,118),
- Operations on the Digestive System (6,183),
- Operations on the Musculoskeletal System (4,685), and
- Transfusion of Blood and Blood Components (3,068).

For inpatients 65 years and older:

- Miscellaneous Diagnostic and Therapeutic Procedures and New Technologies (17,158),
- Operations of the Cardiovascular System (9,252),
- Operations on the Digestive System (6,691),
- Operations on the musculoskeletal System (6,510), and
- Transfusion of Blood and Blood Components (6,232).

Table 9: Number of All-listed Procedures by Procedure Category and Age, New Mexico, 2008

Procedure Category	ICD-9-CM Codes	Total	< 15 Years	15 - 44 Years	45 - 64 Years	65 + Years
No Procedure		174,047	11,604	60,932	42,581	58,930
Operations on the Nervous System	01-05	4,198	625	1,334	1,128	1,111
Spinal Tap	3.31	1,433	477	399	331	226
Operations on the Endocrine System	06-07	474	8	127	204	135
Operations on the Eye	08-16	133	21	50	38	24
Operations on the Ear	18 - 20	161	89	35	21	16
Operations on the Nose, Mouth, and Pharynx	21 - 29	955	281	270	209	195
Operations on the Respiratory System	30 - 34	3,793	203	664	1,215	1,711
Bronchoscopy with or without Biopsy	33.21 - 33.24, 33.27	1,078	84	188	366	440
Operations on the Cardiovascular System	35 - 39	19,276	444	2,462	7,118	9,252
Balloon Angioplasty of Coronary Artery or Coronary Atherectomy	36.01 - 36.02, 36.05	0	0	0	0	0
Insertion of Coronary Artery Stent(s)	36.06 - 36.07	2,630	0	118	1,080	1,432
Coronary Artery Bypass Graft	36.1	807	0	19	340	448
Cardiac Catheterization	37.21 - 37.23	5,020	23	298	2,127	2,572
Insertion, Replacement, Removal, and Revision of Pacemaker Leads	37.7 - 37.8	911	10	36	120	745
Hemodialysis	39.95	3,404	8	513	1,445	1,438
Operations on the Hemic and Lymphatic System	40 - 41	1,552	57	239	661	595
Operations on the Digestive System	42 - 54	18,628	829	4,925	6,183	6,691
Endoscopy of Small Intestine with or without Biopsy	45.11 - 45.14, 45.16	4,529	48	814	1,499	2,168
Endoscopy of Large Intestine with or without Biopsy	45.21 - 45.25	2,074	17	292	602	1,163
Partial Excision of Large Intestine	45.7	1,145	11	127	448	559
Appendectomy, Excluding Incidental	47	1,945	453	929	420	143
Cholecystectomy	51.2	2,694	20	1,047	866	761
Lysis of Peritoneal Adhesions	54.5	1,654	31	546	590	487
Operations on the Urinary System	55 - 59	3,893	99	984	1,386	1,424
Cystoscopy with or without Biopsy	57.31 - 57.33	751	11	188	308	244
Operations on the Male Genital Organs	60 - 64	1,026	60	43	368	555
Prostatectomy	60.2 - 60.6	792	0	3	304	485
Operations on the Female Genital Organs	65 - 74	8,050	40	5,226	2,131	653
Oophorectomy and Salpingo-oophorectomy	65.3 - 65.6	2,054	5	735	1,044	270
Bilateral Desctruction or Occlusion of Fallopian Tubes	66.2 - 66.3	2,446	0	2,430	16	0
Hysterectomy	68.3 - 68.7, 68.9	3,649	0	1,703	1,639	307
Obstetrical Procedures	72 - 75	26,867	29	26,780	58	0
Episiotomy with or without Forceps or Vacuum Extraction	72.1, 72.21, 72.31, 72.71, 73.6	729	1	728	0	0
Artificial Rupture of Membranes	73	8,467	13	8,440	14	0
Medical Induction of Labor	73.4	4,242	4	4,223	15	0
Cesarean Section	74.0 - 74.2, 74.4, 74.99	6,273	3	6,243	27	0
Repair of Current Obstetric Laceration	75.5 - 75.6	7,983	11	7,958	14	0
Operations on the Musculoskeletal System	76 - 84	13,711	351	2,165	4,685	6,510
Partial Excision of Bone	76.2 - 76.3, 77.6 - 77.8	1,019	25	218	453	323
Reduction of Fracture	76.7, 79.0 - 79.3	3,045	168	722	706	1,449
Open Reduction of Fracture with Internal Fixation	79.3	2,084	66	519	540	959
Excision or Destruction of Intervertebral Disc	80.5	1,094	2	295	476	321
Total Hip Replacement	81.51	1,256	0	54	526	676
Total Knee Replacement	81.54	2,883	1	68	1,160	1,654
Operations on the Integumentary System	85 - 86	5,418	350	1,668	1,916	1,484
Debridement of Wound, Infection, or Burn	86.22, 86.28	1,723	74	495	643	511
Miscellaneous Diagnostic and Therapeutic Procedures & New Tech	87 - 99, 00	41,988	2,391	9,758	12,681	17,158
Computerized Axial Tomography	87.03, 87.41, 87.71, 88.01, 88.38	4,658	380	1,518	1,654	1,106
Arteriography and Angiocardiography using Contrast Material	88.4 - 88.5	6,640	47	552	2,706	3,335
Diagnostic ultrasound	88.7	1,714	29	238	539	908
Physical Therapy Procedures	93.1 - 93.3	1,436	19	114	341	962
Respiratory Therapy	93.9, 96.7	5,112	423	891	1,545	2,253
Insertion of Endotracheal Tube	96.04	3,157	173	647	1,050	1,287
Transfusion of Blood and Blood Components	99	10,984	255	1,429	3,068	6,232
Injection or Infusion of Cancer Chemotherapeutic Substance	99.25	1,019	247	242	328	202

All-Listed Procedures by Procedure Category and Gender

Table 10 indicates the number of all-listed procedures by procedure category and Gender for New Mexico in 2008. Excluding the “No Procedure” category, the top five all-listed procedures for males and females were as follows:

The top five all-listed procedures performed on male inpatients were:

- Miscellaneous Diagnostic and Therapeutic Procedures and New Technologies (20,166),
- Operations on the Cardiovascular System (10,589),
- Operations on the Digestive System (8,420),
- Operations on the Musculoskeletal System (6,245), and
- Transfusion of Blood and Blood Components (4,721).

The top five all-listed procedures performed on female inpatients were:

- Obstetrical Procedures (26,866),
- Miscellaneous Diagnostic and Therapeutic Procedures and New Technologies (21,822),
- Operations on the Digestive System (10,208),
- Operations on the Cardiovascular System (8,687), and
- Artificial Rupture of Membranes (8,466).

Figures 3 and 4 below show the percent distribution for the top five all-listed procedures among males and females.

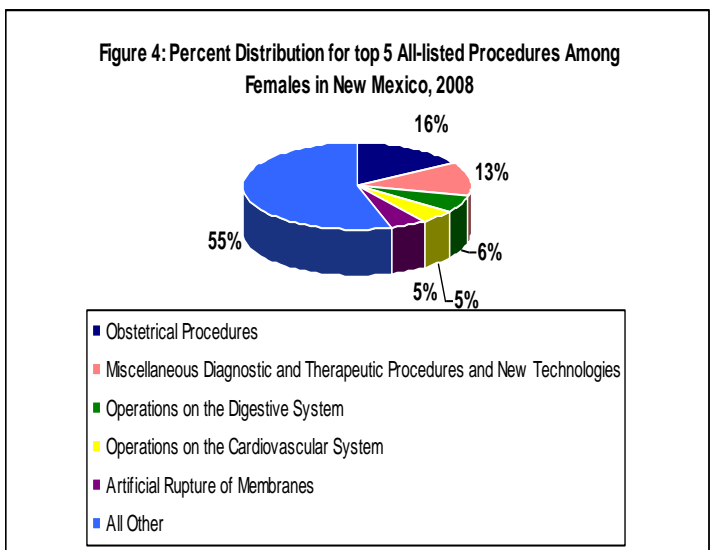
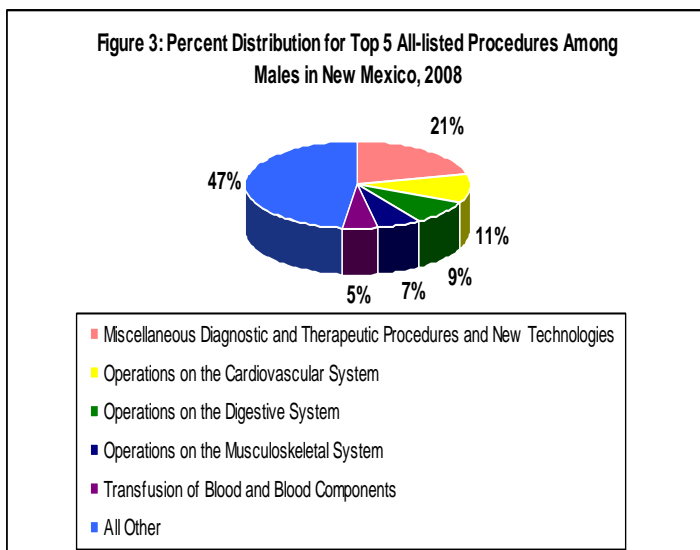


Table 10: Number of All-listed Procedures by Procedure Category and Gender, New Mexico, 2008

Procedure Category	ICD-9-CM Codes	Total	Males	Females
No Procedure		174,047	67,404	106,643
Operations on the Nervous System	01-05	4,198	1,995	2,203
Spinal Tap	3.31	1,433	736	697
Operations on the Endocrine System	06-07	474	128	346
Operations on the Eye	08-16	133	84	49
Operations on the Ear	18 - 20	161	97	64
Operations on the Nose, Mouth, and Pharynx	21 - 29	955	579	376
Operations on the Respiratory System	30 - 34	3,793	2,144	1,649
Bronchoscopy with or without Biopsy	33.21 - 33.24, 33.27	1,078	610	468
Operations on the Cardiovascular System	35 - 39	19,276	10,589	8,687
Balloon Angioplasty of Coronary Artery or Coronary Atherectomy	36.01 - 36.02, 36.05	0	0	0
Insertion of Coronary Artery Stent(s)	36.06 - 36.07	2,630	1,743	887
Coronary Artery Bypass Graft	36.1	807	604	203
Cardiac Catheterization	37.21 - 37.23	5,020	3,047	1,973
Insertion, Replacement, Removal, and Revision of Pacemaker Leads to Device	37.7 - 37.8	911	463	448
Hemodialysis	39.95	3,404	1,801	1,603
Operations on the Hemic and Lymphatic System	40 - 41	1,552	735	817
Operations on the Digestive System	42 - 54	18,628	8,420	10,208
Endoscopy of Small Intestine with or without Biopsy	45.11 - 45.14, 45.16	4,529	2,259	2,270
Endoscopy of Large Intestine with or without Biopsy	45.21 - 45.25	2,074	888	1,186
Partial Excision of Large Intestine	45.7	1,145	545	600
Appendectomy, Excluding Incidental	47	1,945	1,006	939
Cholecystectomy	51.2	2,694	897	1,797
Lysis of Peritoneal Adhesions	54.5	1,654	418	1,236
Operations on the Urinary System	55 - 59	3,893	1,437	2,456
Cystoscopy with or without Biopsy	57.31 - 57.33	751	160	591
Operations on the Male Genital Organs	60 - 64	1,026	1,026	0
Prostatectomy	60.2 - 60.6	792	792	0
Operations on the Female Genital Organs	65 - 74	8,050	1	8,049
Oophorectomy and Salpingo-oophorectomy	65.3 - 65.6	2,054	1	2,053
Bilateral Desruption or Occlusion of Fallopian Tubes	66.2 - 66.3	2,446	0	2,446
Hysterectomy	68.3 - 68.7, 68.9	3,649	1	3,648
Obstetrical Procedures	72 - 75	26,867	1	26,866
Episiotomy with or without Forceps or Vacuum Extraction	72.1, 72.21, 72.31, 72.71, 73.6	729	0	729
Artificial Rupture of Membranes	73	8,467	1	8,466
Medical Induction of Labor	73.4	4,242	0	4,242
Cesarean Section	74.0 - 74.2, 74.4, 74.99	6,273	0	6,273
Repair of Current Obstetric Laceration	75.5 - 75.6	7,983	0	7,983
Operations on the Musculoskeletal System	76 - 84	13,711	6,245	7,466
Partial Excision of Bone	76.2 - 76.3, 77.6 - 77.8	1,019	524	495
Reduction of Fracture	76.7, 79.0 - 79.3	3,045	1,330	1,715
Open Reduction of Fracture with Internal Fixation	79.3	2,084	912	1,172
Excision or Destruction of Intervertebral Disc	80.5	1,094	541	553
Total Hip Replacement	81.51	1,256	488	768
Total Knee Replacement	81.54	2,883	1,128	1,755
Operations on the Integumentary System	85 - 86	5,418	2,692	2,726
Debridement of Wound, Infection, or Burn	86.22, 86.28	1,723	1,031	692
Miscellaneous Diagnostic and Therapeutic Procedures & New Technologies	87 - 99, 00	41,988	20,166	21,822
Computerized Axial Tomography	87.03, 87.41, 87.71, 88.01, 88.38	4,658	2,569	2,089
Arteriography and Angiocardiology using Contrast Material	88.4 - 88.5	6,640	3,935	2,705
Diagnostic ultrasound	88.7	1,714	855	859
Physical Therapy Procedures	93.1 - 93.3	1,436	608	828
Respiratory Therapy	93.9, 96.7	5,112	2,787	2,325
Insertion of Endotracheal Tube	96.04	3,157	1,776	1,381
Transfusion of Blood and Blood Components	99	10,984	4,721	6,263
Injection or Infusion of Cancer Chemotherapeutic Substance	99.25	1,019	551	468

All-listed Procedures by Procedure Category and Region

Table 11 provides all-listed procedures by procedure category and region for New Mexico in 2008. Among all five regions:

- The Central Region had the highest number of Obstetrical procedures (9,191) followed by the Southwest Region (5,032), Northwest Region (4,988), Southeast Region (4,158), and Northeast Region (3,498);
- The Northwest Region had the highest number for Hemodialysis (1,052) followed by the Central Region (967), Southwest Region (719), Northeast Region (395), and Southeast Region (271);
- The Southwest Region had the highest number for Insertion of Coronary Artery Stent(s) (863) followed by the Central Region (766), Northwest Region (548), Northeast Region (328), and Southeast Region (125); and
- The Southeast Region had the highest number of Physical Therapy Procedures (583) followed by the Northeast Region (390), Central Region (222), Northwest Region (144), and Southwest Region (97).

Table 11: Number of All-Listed Procedures by Procedure Category and Region

Procedure Category	ICD-9-CM Codes	Total	NW	NE	Central	SE	SW
No Procedure		174,047	32,130	26,346	52,250	27,233	36,088
Operations on the Nervous System	01-05	4,198	1,134	637	1,455	258	714
Spinal Tap	3.31	1,433	314	211	579	122	207
Operations on the Endocrine System	06-07	474	84	48	194	61	87
Operations on the Eye	08-16	133	34	25	43	8	23
Operations on the Ear	18 - 20	161	49	26	58	9	19
Operations on the Nose, Mouth, and Pharynx	21 - 29	955	232	132	340	82	169
Operations on the Respiratory System	30 - 34	3,793	761	653	1,207	305	867
Bronchoscopy with or without Biopsy	33.21 - 33.24, 33.27	1,078	223	155	397	73	230
Operations on the Cardiovascular System	35 - 39	19,276	4,524	2,562	6,133	1,428	4,629
Balloon Angioplasty of Coronary Artery or Coronary Atherectomy	36.01 - 36.02, 36.05	0	0	0	0	0	0
Insertion of Coronary Artery Stent(s)	36.06 - 36.07	2,630	548	328	766	125	863
Coronary Artery Bypass Graft	36.1	807	194	108	227	30	248
Cardiac Catheterization	37.21 - 37.23	5,020	1,064	599	1,305	283	1,769
Insertion, Replacement, Removal, and Revision of Pacemaker Leads	37.7 - 37.8	911	177	107	310	77	240
Hemodialysis	39.95	3,404	1,052	395	967	271	719
Operations on the Hemic and Lymphatic System	40 - 41	1,552	310	216	619	104	303
Operations on the Digestive System	42 - 54	18,628	3,769	3,046	5,994	2,040	3,779
Endoscopy of Small Intestine with or without Biopsy	45.11 - 45.14, 45.16	4,529	910	780	1,451	434	954
Endoscopy of Large Intestine with or without Biopsy	45.21 - 45.25	2,074	431	364	697	205	377
Partial Excision of Large Intestine	45.7	1,145	223	198	391	129	204
Appendectomy, Excluding Incidental	47	1,945	381	291	593	278	402
Cholecystectomy	51.2	2,694	561	337	813	365	618
Lysis of Peritoneal Adhesions	54.5	1,654	308	285	484	223	354
Operations on the Urinary System	55 - 59	3,893	633	569	1,171	586	934
Cystoscopy with or without Biopsy	57.31 - 57.33	751	120	117	316	96	102
Operations on the Male Genital Organs	60 - 64	1,026	154	176	317	141	238
Prostatectomy	60.2 - 60.6	792	101	137	261	115	178
Operations on the Female Genital Organs	65 - 74	8,050	1,409	1,235	2,248	1,545	1,613
Oophorectomy and Salpingo-oophorectomy	65.3 - 65.6	2,054	367	383	538	386	380
Bilateral Desecration or Occlusion of Fallopian Tubes	66.2 - 66.3	2,446	437	273	649	491	596
Hysterectomy	68.3 - 68.7, 68.9	3,649	630	642	1,018	717	642
Obstetrical Procedures	72 - 75	26,867	4,988	3,498	9,191	4,158	5,032
Episiotomy with or without Forceps or Vacuum Extraction	72.1, 72.21, 72.31, 72.71, 73.6	729	180	91	111	216	131
Artificial Rupture of Membranes	73	8,467	1,554	1,035	3,564	742	1,572
Medical Induction of Labor	73.4	4,242	695	539	1,582	636	790
Cesarean Section	74.0 - 74.2, 74.4, 74.99	6,273	1,190	775	1,903	1,108	1,297
Repair of Current Obstetric Laceration	75.5 - 75.6	7,983	1,420	1,045	2,819	1,220	1,479
Operations on the Musculoskeletal System	76 - 84	13,711	2,818	2,075	4,587	1,635	2,596
Partial Excision of Bone	76.2 - 76.3, 77.6 - 77.8	1,019	214	151	426	82	146
Reduction of Fracture	76.7, 79.0 - 79.3	3,045	606	541	941	384	573
Open Reduction of Fracture with Internal Fixation	79.3	2,084	423	345	625	291	400
Excision or Destruction of Intervertebral Disc	80.5	1,094	190	181	381	72	270
Total Hip Replacement	81.51	1,256	258	199	476	119	204
Total Knee Replacement	81.54	2,883	605	367	953	435	523
Operations on the Integumentary System	85 - 86	5,418	1,113	824	1,670	688	1,123
Debridement of Wound, Infection, or Burn	86.22, 86.28	1,723	406	254	526	170	367
Miscellaneous Diagnostic and Therapeutic Procedures & New Tech	87 - 99, 00	41,988	9,619	4,848	14,705	4,827	7,989
Computerized Axial Tomography	87.03, 87.41, 87.71, 88.0, 88.38	4,658	922	352	2,948	114	322
Arteriography and Angiocardigraphy using Contrast Material	88.4 - 88.5	6,640	1,433	743	2,078	376	2,010
Diagnostic ultrasound	88.7	1,714	1,016	135	229	53	281
Physical Therapy Procedures	93.1 - 93.3	1,436	144	390	222	583	97
Respiratory Therapy	93.9, 96.7	5,112	1,201	783	1,648	449	1,031
Insertion of Endotracheal Tube	96.04	3,157	658	498	1,056	308	637
Transfusion of Blood and Blood Components	99	10,984	2,503	1,197	3,703	1,877	1,704
Injection or Infusion of Cancer Chemotherapeutic Substance	99.25	1,019	230	125	434	47	183

SPECIFIC CATEGORIES OF DISEASE AND INJURY

This section provides data on specific categories of disease and injury. Specific categories include asthma, diabetes mellitus, influenza and pneumonia, injury and mental disorders. Data is presented by first-listed diagnosis as well as all-listed diagnoses. First-listed diagnosis refers to a mention of a specific disease or injury ICD-9 CM code in the first of nine diagnostic fields of the medical record. All-listed diagnoses refer to a mention of a specific disease or injury ICD-9 CM code within any of the nine diagnostic fields of the medical record.

Asthma

Asthma is a chronic inflammatory disease of the airways characterized by wheezing, coughing, breathlessness, and chest tightness. Asthma symptoms can be triggered by allergens (substances that cause an allergic response) or irritants (substances that irritate the nose or airways provoking asthma symptoms), such as animal dander, air pollution, pollen, exercise, cold air, or stress. The asthma ICD-9 CM codes are 493.0-493.92.

As indicated in Table 12 on the following page:

- In 2008, there were 1,897 hospitalizations where asthma was the first-listed or primary diagnosis;
- Females accounted for 58.4% of primary asthma hospitalizations;
- Inpatients less than 15 years of age had the largest number (706) and highest rate (17.4) of asthma hospital discharges;
- The Southeast Region had the highest rates of asthma primary discharges for both males and females (18.5); and
- The average length of stay in a hospital due to asthma was 3.2 days. Length of stay varied between 2.4 days and 4.4 days when all age groups and regions were examined.

Table 12: Number, Rate, and Average Length of Stay for Asthma Inpatient Hospital Discharges, First-listed Diagnosis by Age, Gender, and Region,

Number of Discharges By Age Group	Total	Males	Females
All Ages	1,897	788	1,109
< 15	706	434	272
15-44	343	117	226
45-64	438	105	333
65+	410	132	278
Number of Discharges By Region	Total	Males	Females
Northwest Region	306	124	182
Northeast Region	258	98	160
Central Region	482	202	280
Southeast Region	467	230	237
Southwest Region	384	134	250
Rates of Discharge By Age Group	Total	Males	Females
All Ages	9.2	7.8	10.6
< 15	17.4	21.1	13.6
15-44	4.0	2.7	5.3
45-64	8.3	4.1	12.3
65+	15.4	11.2	18.9
Rates of Discharge By Region	Total	Males	Females
All Regions	9.6	8.3	10.7
Northwest Region	7.7	6.3	8.8
Northeast Region	9.2	7.6	10.8
Central Region	7.8	7.1	8.5
Southeast Region	18.7	18.5	18.5
Southwest Region	9.1	6.6	11.5
Average Length of Stay By Age Group	Total	Males	Females
All Ages	3.2	2.9	3.5
< 15	2.6	2.6	2.6
15-44	3.0	3.0	3.0
45-64	3.6	3.2	3.8
65+	4.2	3.7	4.4
Average Length of Stay By Region	Total	Males	Females
All Regions	3.2	2.9	3.5
Northwest Region	3.0	2.8	3.2
Northeast Region	3.3	3.2	3.4
Central Region	3.3	3.1	3.5
Southeast Region	2.8	2.4	3.2
Southwest Region	3.8	3.4	4.0

Note: Except for age-specific rates, all rates are age-adjusted to the 2000 U.S. Standard Population.

As indicated in Table 13 below:

- In 2008, there were 10,454 hospital discharges with asthma reported as the primary or secondary diagnosis;
- Females accounted for 66.5% of all cases;
- The Central Region had the largest number of primary or secondary asthma discharges (3,369) while the Southeast Region had the highest discharge rate (69.6);
- Males had a longer length of stay in the hospital (5.4 days) compared to females (4.5 days); and
- The Southwest Region had the longest length of stay (5.2 days).

Table 13: Number, Rate, and Average Length of Stay for Asthma Inpatient Hospital Discharges, All-listed Diagnoses by Age, Gender, and Region

Number of Discharges By Age Group	Total	Males	Females
All Ages	10,454	3,504	6,950
< 15	1,673	1,014	659
15-44	3,422	874	2,548
45-64	2,834	802	2,032
65+	2,525	814	1,711
Number of Discharges By Region	Total	Males	Females
Northwest Region	1,776	587	1,189
Northeast Region	1,342	455	887
Central Region	3,369	1,086	2,283
Southeast Region	1,754	648	1,106
Southwest Region	2,213	728	1,485
Rates of Discharge By Age Group	Total	Males	Females
All Ages	50.9	34.7	66.6
< 15	41.2	49.2	33.0
15-44	39.9	20.3	59.8
45-64	54.0	31.5	75.1
65+	95.0	68.8	116.1
Rates of Discharge By Region	Total	Males	Females
All Regions	52.0	36.4	66.6
Northwest Region	44.3	29.9	57.4
Northeast Region	45.6	33.3	57.3
Central Region	52.8	36.0	68.5
Southeast Region	69.6	52.5	85.6
Southwest Region	53.7	36.7	69.7
Average Length of Stay By Age Group	Total	Males	Females
All Ages	4.8	5.4	4.5
< 15	4.3	4.1	4.6
15-44	5.3	8.0	4.4
45-64	4.4	5.0	4.2
65+	4.6	4.4	4.8
Average Length of Stay By Region	Total	Males	Females
All Regions	4.8	5.4	4.5
Northwest Region	5.1	6.7	4.3
Northeast Region	4.4	5.0	4.1
Central Region	4.7	5.2	4.4
Southeast Region	4.3	4.3	4.4
Southwest Region	5.2	5.8	4.9

Note: Except for age-specific rates, all rates are age-adjusted to the 2000 U.S. Standard Population.

Diabetes

Diabetes mellitus is a group of diseases marked by high levels of blood glucose resulting from defects in insulin production, insulin action, or both. The hormone insulin regulates blood glucose. Diabetes can lead to serious complications and premature death, but people with diabetes can take steps to control the disease and lower the risk of complications. Factors like poverty, inadequate access to healthy food and low physical activity levels contribute to the development of diabetes and its complications. The following two tables on diabetes inpatient discharges include diabetes with and without complications. The diabetes mellitus ICD-9 CM codes are 250-250.9.

As indicated in Table 14:

- There were 2,674 discharges with diabetes as the primary diagnoses, with a state rate of 13.0 diabetes discharges per 10,000 population for New Mexico in 2008.
- The male rate of 14.4 was higher than the female rate of 11.7.
- The highest rate by age group was among the 65 years and older group (27.3) while the lowest rate occurred among those less than 15 years of age (2.9).
- The highest rate by age and gender was among males 65 and older at 29.4.
- The Southeast Region had the highest regional rate at 17.4 diabetes discharges per 10,000 while the Central Region had the lowest rate at 10.7.
- The statewide average length of stay was 4.9 days.
- Males 65 years and older had the highest average length of stay by age group and gender, at 6.2 days.
- The highest average lengths of stay by region occurred in the Central and Northwest Regions at 5.6 and 5.3, respectively. The highest average length of stay by gender and region occurred among males in the Central Region at 6.1 days, followed by females in the Northwest Region at 5.9 days.
- The lowest regional average length of stay occurred in the Southeast Region at 3.6 days. Correspondingly, the male and female rates for this region had the lowest average length of stay compared to all other gender/region groups. The Southeast Region also had the highest rate of hospitalization, as noted above.

Table 14: Number, Rate and Average Length of Stay for Diabetes Inpatient Hospital Discharges, First-listed Diagnosis by Age, Gender and Region

Number of Discharges By Age Group	Total	Males	Females
All Ages	2,674	1,453	1,221
< 15	116	56	60
15-44	847	494	353
45-64	985	555	430
65+	726	348	378
Number of Discharges By Region	Total	Males	Females
Northwest Region	494	276	218
Northeast Region	444	223	221
Central Region	714	413	301
Southeast Region	439	221	218
Southwest Region	583	320	263
Rates of Discharge By Age Group	Total	Males	Females
All Ages	13.0	14.4	11.7
< 15	2.9	2.7	3.0
15-44	9.9	11.5	8.3
45-64	18.8	21.8	15.9
65+	27.3	29.4	25.6
Rates of Discharge By Region	Total	Males	Females
All Regions	12.9	14.6	11.2
Northwest Region	12.1	14.0	10.2
Northeast Region	14.3	14.7	14.0
Central Region	10.7	12.8	8.6
Southeast Region	17.4	18.4	16.6
Southwest Region	14.0	16.2	11.9
Average Length of Stay By Age Group	Total	Males	Females
All Ages	4.9	5.1	4.6
< 15	3.9	3.3	4.5
15-44	3.5	3.4	3.6
45-64	5.6	6.1	4.9
65+	5.6	6.2	5.1
Average Length of Stay By Region	Total	Males	Females
All Regions	4.9	5.1	4.6
Northwest Region	5.3	4.8	5.9
Northeast Region	4.8	5.6	4.0
Central Region	5.6	6.1	5.0
Southeast Region	3.6	3.7	3.5
Southwest Region	4.5	4.7	4.4

Note: Except for age-specific rates, all rates are age-adjusted to the 2000 U.S. Standard Population.

Up to nine diagnoses can be given (coded) for a discharge. Table 15 provides data on discharges in which a diagnosis of diabetes occurred within any of these nine diagnoses.

- In 2008, there were 26,842 discharges with all mentions of diabetes diagnosis in New Mexico.
- The overall state rate was 130.5 diabetes discharges per 10,000 population.
- The male and female diabetes hospitalization rates were 122.9 and 138.2 respectively.
- The 65 years and older age group had the highest diabetes hospitalization rate at 514.4. The rates by gender in this age group were correspondingly high at 512.3 for males and 516.1 for females.
- The hospitalization rate for those less than 15 years of age was 3.7.
- The Central Region had the lowest regional rate at 103.2.
- The Southeast Region had the highest regional rate at 166.4 diabetes discharges per 10,000. The region's female rate was 173.8 while the male rate was 159.7.
- The statewide average length of stay was 5.0 days.
- Among age groups, the lowest average length of stay was in the 15-44 age group (4.4 days) and the highest in the 65 and older group (5.1 days).
- The highest regional average lengths of stay were in the Central and Northwest Regions at 5.4 and 5.3 days, respectively.
- The lowest regional average length of stay was in the Southeast Region at 4.1 days. This same region had the highest rate of diabetes discharges, as noted previously.

Table 15: Number, Rate and Average Length of Stay for Diabetes Inpatient Hospital Discharges, All-listed Diagnoses by Age, Gender and Region

Number of Discharges By Age Group	Total	Males	Females
All Ages	26,842	12,414	14,428
< 15	151	73	78
15-44	3,556	1,654	1,902
45-64	9,464	4,624	4,840
65+	13,671	6,063	7,608
Number of Discharges By Region	Total	Males	Females
Northwest Region	5,473	2,499	2,974
Northeast Region	4,070	1,901	2,169
Central Region	6,968	3,190	3,778
Southeast Region	4,260	1,880	2,380
Southwest Region	6,071	2,944	3,127
Rates of Discharge By Age Group	Total	Males	Females
All Ages	130.7	122.9	138.2
< 15	3.7	3.5	3.9
15-44	41.5	38.4	44.6
45-64	180.2	181.6	178.8
65+	514.4	512.3	516.1
Rates of Discharge By Region	Total	Males	Females
All Regions	131.3	130.1	132.4
Northwest Region	145.0	141.0	148.0
Northeast Region	133.7	132.5	134.9
Central Region	103.2	101.4	104.6
Southeast Region	166.4	159.7	173.8
Southwest Region	145.4	148.8	142.3
Average Length of Stay By Age Group	Total	Males	Females
All Ages	5.0	5.0	4.9
< 15	4.7	4.5	4.8
15-44	4.4	4.7	4.2
45-64	5.0	5.2	4.9
65+	5.1	5.0	5.1
Average Length of Stay By Region	Total	Males	Females
All Regions	5.0	5.0	4.9
Northwest Region	5.3	5.2	5.3
Northeast Region	4.9	5.1	4.7
Central Region	5.4	5.6	5.2
Southeast Region	4.1	4.0	4.2
Southwest Region	4.8	4.9	4.8

Note: Except for age-specific rates, all rates are age-adjusted to the 2000 U.S. Standard Population.

Influenza and Pneumonia

Pneumonia is an inflammatory disease of the lungs and can be caused by bacterial, viral or fungal infections. Secondary pneumonia can often occur following an infection with the influenza virus, a virus that causes fever, cough, sore throat and respiratory complications. The ICD-9 CM codes for influenza are 487.0-487.8.

Figure 5 below shows:

- All hospitalizations of New Mexico residents from 2005-2008 in which influenza was listed as a primary or secondary cause of hospitalization;
- The seasonality of influenza illness, with higher numbers of hospitalizations occurring during the months of October to May;
- The variation of influenza seasonal severity, with a higher number of hospitalizations occurring during the 2005-2006 influenza season; and
- Evidence of a low baseline of influenza-related hospitalizations during the months of May to September.

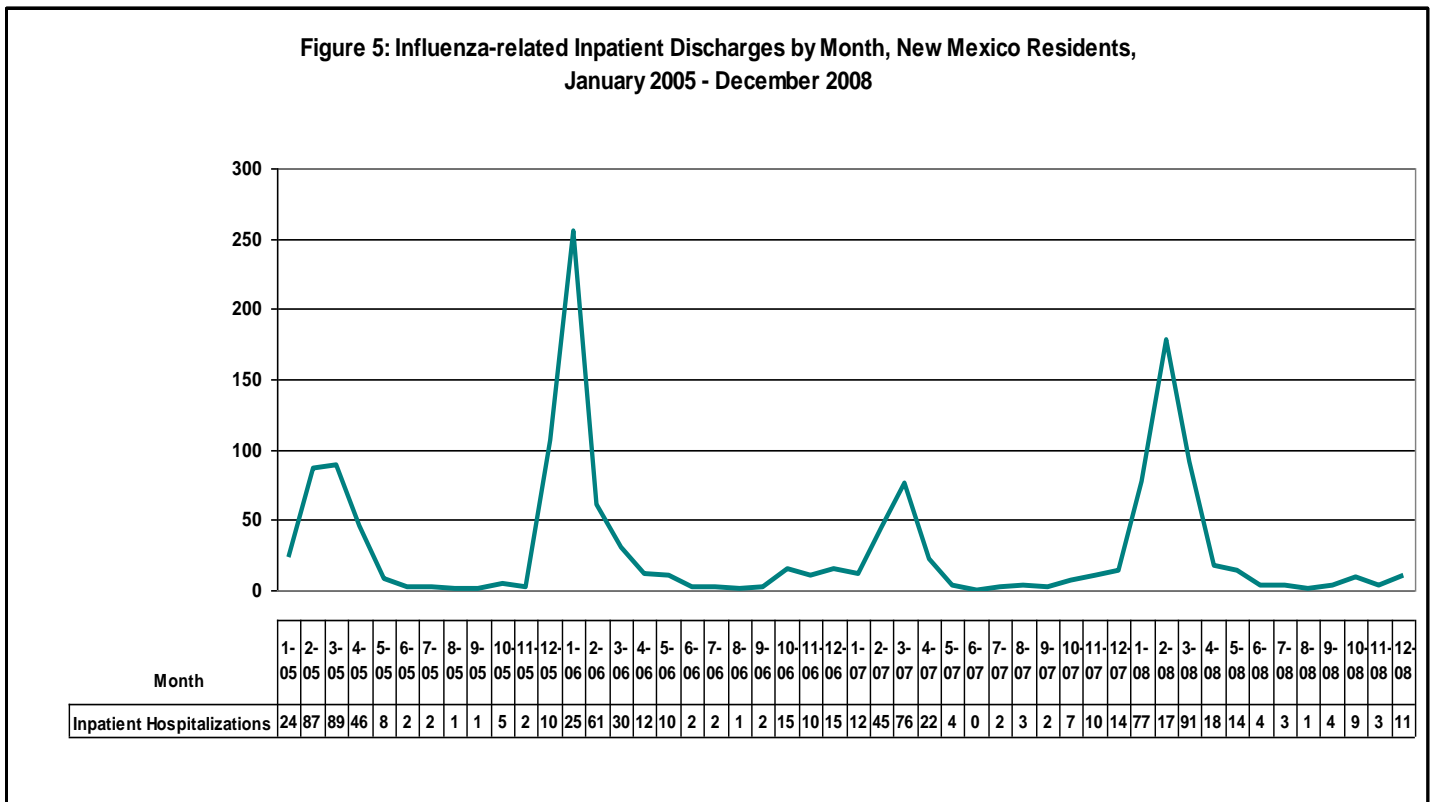


Table 16 indicates the numbers, rates, and average lengths of stay when pneumonia or influenza was listed as the primary diagnosis and the cause of hospitalization.

- In 2008, there were 6,561 hospital discharges in which pneumonia or influenza was listed as the primary diagnosis;
- More than half of these hospitalizations (52.6%) occurred in adults 65 and older;
- The highest rate of hospitalization due to pneumonia or influenza occurred in the Southeast Region (52.6); and
- The average length of stay in the hospital for a primary diagnosis of pneumonia or influenza was 4.7 days and did not differ widely by gender or region of the state.

Table 16: Numbers, Rates and Average Length of Stay for Pneumonia or Influenza Inpatient Hospital Discharges, First-listed Diagnosis by Age, Gender and Region

Number of Discharges By Age Group	Total	Males	Females
All Ages	6,561	3,224	3,337
< 15	1,144	633	511
15-44	612	323	289
45-64	1,351	637	714
65+	3,454	1,631	1,823
Number of Discharges By Region	Total	Males	Females
Northwest Region	1,147	533	614
Northeast Region	1,174	614	560
Central Region	1,540	708	832
Southeast Region	1,262	641	621
Southwest Region	1,438	728	710
Rates of Discharge By Age Group	Total	Males	Females
All Ages	31.9	31.9	32.0
< 15	28.2	30.7	25.6
15-44	7.1	7.5	6.8
45-64	25.7	25.0	26.4
65+	130.0	137.8	123.7
Rates of Discharge By Region	Total	Males	Females
All Regions	36.6	38.4	35.1
Northwest Region	34.5	33.7	35.1
Northeast Region	47.5	53.7	42.4
Central Region	25.5	25.2	25.8
Southeast Region	52.6	56.6	49.3
Southwest Region	39.5	42.3	37.1
Average Length of Stay By Age Group	Total	Males	Females
All Ages	4.7	4.7	4.7
< 15	3.3	3.4	3.2
15-44	4.4	4.7	4.0
45-64	5.2	5.3	5.1
65+	5.0	4.9	5.1
Average Length of Stay By Region	Total	Males	Females
All Regions	4.7	4.7	4.7
Northwest Region	4.9	5.2	4.6
Northeast Region	4.6	4.4	4.7
Central Region	5.0	4.8	5.1
Southeast Region	4.0	3.8	4.1
Southwest Region	5.0	5.1	4.9

Note: Except for age-specific rates, all rates are age-adjusted to the 2000 U.S. Standard Population.

Injury

Injuries were the primary cause for 9,984 hospitalizations in New Mexico in 2008. All types of injuries resulting in hospitalization (e.g. fractures, open wounds, burns) as well as poisonings from various sources, such as overdoses from illicit drugs or prescription medications, are included in this report. Detailed information is also provided for the subcategories of burns, hip fractures, poisonings, spinal cord injury (SCI) and traumatic brain injury (TBI).

Table 17 on the following page indicates the age, gender and residence location of injury discharges:

For all injury/poisoning discharges:

- The highest rate of injury discharges was found in the 65 years and older age group at 149.9 per 10,000;
- The female rate of hospitalizations (54.0) exceeded the male rate (52.6); and
- Residents from the Northeast Region had the highest rate at 68.6.

For burns:

- The hospitalization rate was highest among children under 15 years of age at 1.1 per 10,000 population;
- The male rate (1.1) was one and a half times higher than the female rate (0.7) for burn hospitalizations; and
- Residents from the Central Region had the highest rate (1.2) followed closely by the Northeast (1.1) and Northwest (1.0) Regions.

For hip fractures:

- Persons aged 65 years and older experienced 86.6% of hip fracture hospitalizations with a rate of 63.7 per 10,000 population;
- The female hip fracture rate (16.0) was 1.9 times higher than that for males (8.4); and
- Residents from the Northeast Region had the highest rate at 15.4.

For poisoning:

- The highest hospitalization rate occurred in the 15-44 year age group at 11.9 per 10,000 population;
- The female rate (9.8) was one-third higher than the male rate (8.6) for poisoning hospitalizations; and
- Residents from the Northeast Region had the highest rate at 11.8.

For spinal cord injury (SCI):

- The highest hospitalization rate occurred in the 65 and older group at 0.5 per 10,000 population;
- The male rate (0.4) was about four times higher than the female SCI rate (0.1); and
- Residents from the Northeast Region had the highest rate at 0.5.

For traumatic brain injury (TBI):

- The highest hospitalization rate occurred in the 65 years and older age group at 16.4 per 10,000 population;
- The male rate (8.7) was 1.7 times higher than the female TBI rate (5.2); and
- Residents from the Northeast and Northwest Regions had the highest rates at 10.1 and 9.6 respectively.

Table 17: Number and Rate of Inpatient Hospital Discharges for Injury Conditions by Age, Gender and Region

Categories of First-listed Diagnosis and ICD-9-CM Code	Injury and Poisonings (800-995)		Burns (940-949)		Hip Fracture (820)		Poisonings (960-989)		Spinal Cord Injury (806,952)		Traumatic Brain Injury	
	Number	Rate	Number	Rate	Number	Rate	Number	Rate	Number	Rate	Number	Rate
Age Group												
All Ages	9,984	54.5	180	0.9	1,955	12.8	1,904	9.2	54	0.3	1,319	6.9
< 15	580	14.3	44	1.1	9	0.2	80	2.0			121	3.0
15-44	3,195	37.3	63	0.7	42	0.5	1,022	11.9	22	0.3	475	5.5
45-64	2,225	42.4	47	0.9	210	4.0	584	11.1	18	0.3	287	5.5
65+	3,984	149.9	26	1.0	1,694	63.7	218	8.2	14	0.5	436	16.4
Gender												
Males	4,871	52.6	109	1.1	585	8.4	867	8.6	41	0.4	814	8.7
Females	5,113	54.0	71	0.7	1,370	16.0	1,037	9.8	13	0.1	505	5.2
Region												
Northwest Region	1,957	55.1	43	1.0	332	12.8	269	6.2	14	0.3	366	9.6
Northeast Region	1,839	68.6	34	1.1	332	15.4	362	11.8	13	0.5	282	10.1
Central Region	3,113	51.7	73	1.2	590	11.2	579	8.8	22	0.3	439	7.2
Southeast Region	1,303	55.7	8	0.4	287	13.5	280	11.2	4	0.2	98	4.0
Southwest Region	1,772	48.5	22	0.5	414	13.1	414	10.1	1	0.0	134	3.5

Note: Except for age-specific rates, all rates are age-adjusted to the 2000 U.S. Standard Population.

Figures 6 and 7 show the patterns of discharge status and average (mean) length of stay for injuries:

For all injury discharges:

- 70.3% of all injury discharges were sent home;
- 15.8% were sent to long term care facilities; and
- The mean length of stay was 5.0 days.

For burns:

- 86.7% of burn discharges went home;
- 7.2% were sent to other general hospitals or medical facilities; and
- The mean length of stay was 9.1 days.

For hip fractures:

- 41.0% of hip fracture discharges were sent to long term care facilities;
- 42.5% of hip fracture discharges went home; and
- The mean length of stay was 5.0 days.

For poisoning:

- 78.6% of poisoning discharges went home.
- 14.3% were sent to other general hospitals or medical facilities; and
- The mean length of stay was 3.1 days.

For spinal cord injury (SCI):

- 35.2% of SCI discharges were sent to other general hospitals or medical facilities;
- 51.9% went home; and
- The mean length of stay was 16.1 days.

For traumatic brain injury (TBI):

- 71.3% of TBI discharges went home;
- 13.1% were sent to other general hospitals or medical facilities; and
- The mean length of stay was 8.3 days.

Figure 6: Discharge Status by Injury Type, New Mexico, 2008

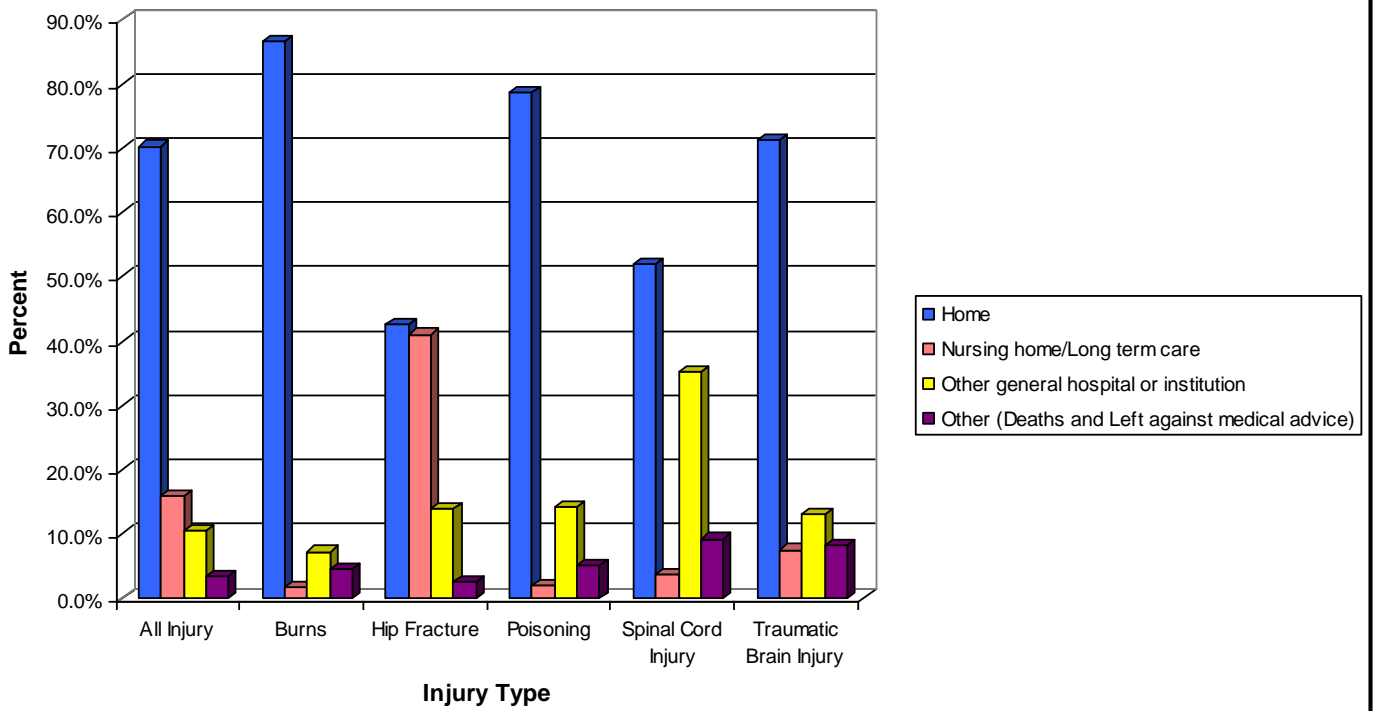
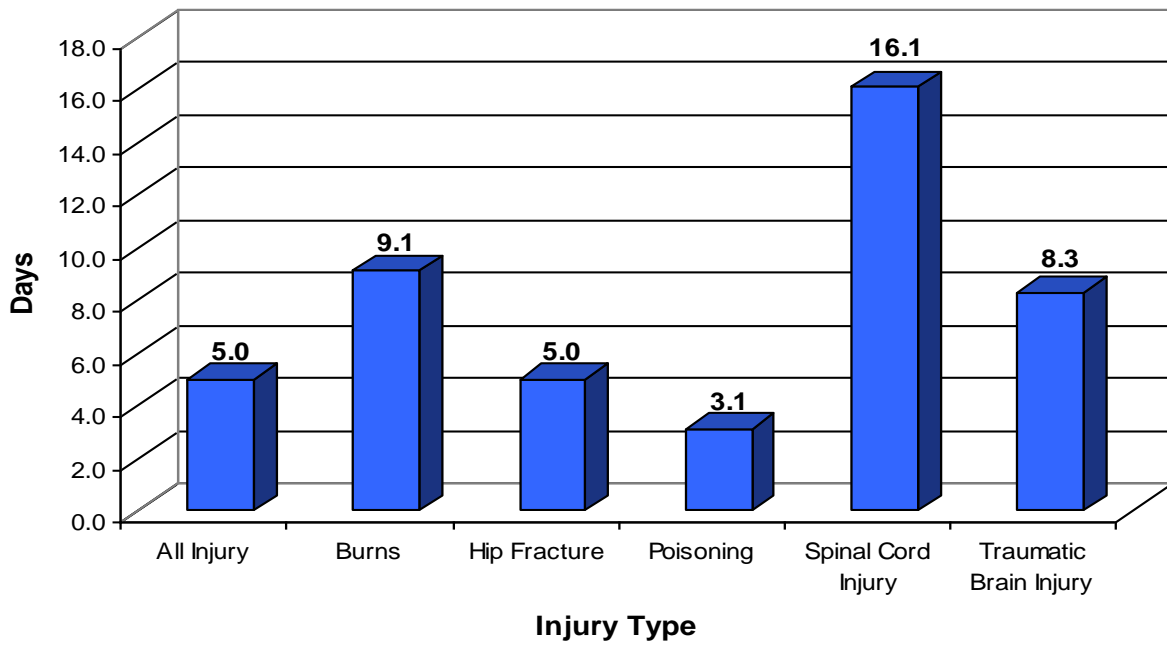


Figure 7: Average Length of Stay by Injury Type, New Mexico, 2008



Mental Disorders

Mental disorders are health conditions characterized by alterations in thinking, mood, and/or behavior that are associated with personal distress or role impairment. Common mental disorders include anxiety and mood disorders and substance use disorders. In any given year in the U.S., approximately one out of every four adults has a mental health condition.

Table 18 on the following page indicates the numbers and rates of inpatient hospital discharges by gender when a mental disorder is listed as one of the nine diagnoses during that hospitalization.

- Of the mental disorders listed, patients with any diagnosis of psychoses accounted for the highest number (22,238) and rate (119.8 per 10,000) of inpatient hospital discharges.
- Of the specific psychoses mentioned, the most frequent diagnosis at hospital discharge was schizophrenia, representing 2,964 inpatient hospitalizations. Sixty-two percent of schizophrenia hospital discharges were among males, and males (18.1 per 10,000) were discharged at a higher rate than females (10.5 per 10,000).
- In 2008, mood disorders (major depressive disorder, dysthymia, bipolar disorders, and depressive disorders, nos) accounted for 15,994 primary or secondary hospital discharges.
- Females accounted for 60% of the primary or secondary hospital discharges for major depressive disorder, and females had a higher rate of discharge (21.0 per 10,000) than males (14.3 per 10,000).
- Of the substance disorders, the most common reason for primary or secondary hospital discharge was alcohol dependence syndrome (27.6 per 10,000), followed closely by non-dependent abuse of drugs (25.1 per 10,000).
- Males had rates of primary or secondary discharges for alcohol dependence syndrome and non-dependent alcohol abuse that were 2.6 and 2.0 times higher than females, respectively.
- Number and rates of hospital discharge for drug dependence were similar for males and females, whereas males were more likely to be discharged with a diagnosis of non-dependent abuse of drugs (28.1 per 10,000) than females (22.2 per 10,000).
- Of the drug-specific substance disorders, cannabis dependence or abuse was the most frequent diagnosis, and males had a higher rate (15.7 per 10,000) than females (11.2 per 10,000).

Table 18: Number and Rate of Inpatient Hospital Discharges for Mental Disorders by Gender and All-listed Diagnoses

Category of All-listed Diagnoses	ICD-9-CM Codes	NM Total	NM Rate	Males		Females	
				Number	Rate	Number	Rate
Anxiety Disorders, All Mentions							
Generalized Anxiety Disorder and Anxiety, nos	300.00, 300.02	4,293	21.3	1,414	14.2	2,879	27.5
Obsessive Compulsive Disorder	300.3	294	1.4	147	1.4	147	1.4
Post-Traumatic Stress Disorder	309.81	2,203	10.8	786	7.7	1,417	13.9
Mood Disorders, All Mentions							
Major Depressive Disorder	296.2, 296.3	3,658	17.8	1,462	14.3	2,196	21.0
Dysthymia	300.4	2,105	10.2	615	6.2	1,490	13.9
Bipolar I and II Disorders	296.4 - 296.7	2,231	10.9	943	9.3	1,288	12.4
Depressive Disorders, nos	296.4 - 296.7	8,000	39.9	2,744	28.7	5,256	50.0
Psychoses, All Mentions							
Psychoses	290 - 299	22,238	119.8	10,644	117.3	11,594	120.5
Senile and Presenile Dementia	290, 290.0, 290.2, 290.3	392	2.9	126	2.1	266	3.5
Alcoholic Psychoses	291.x	2,675	12.7	2,073	20.2	602	5.6
Drug Psychoses	292.x	1,407	7.2	697	7.4	710	7.1
Schizophrenia	295.x	2,964	14.3	1,849	18.1	1,115	10.5
Substance Disorders, All Mentions							
Alcohol Dependence Syndrome	303.xx	5,777	27.6	4,141	40.4	1,636	15.4
Non-dependent Abuse of Alcohol	305.0x	3,605	17.3	2,403	23.4	1,202	11.6
Drug Dependence	304.xx	3,489	17.2	1,774	17.5	1,715	16.9
Non-dependent Abuse of Drugs	305.2x - 305.9x	5,115	25.1	2,863	28.1	2,252	22.2
Opioid Type Dependence/Abuse	304.0x, 304.7x, 305.5x	2,342	11.6	1,204	11.9	1,138	11.3
Cocaine Dependence/Abuse	304.2x, 305.6x	2,143	10.7	1,204	12.0	939	9.5
Cannabis Dependence/Abuse	304.3x, 305.2x	2,760	13.4	1,616	15.7	1,144	11.2
Amphetamine/Other Psycho-stimulant Type Dependence/Abuse	304.4x, 305.7x	1,152	5.8	531	5.4	621	6.3
Other Specified Drug Dependence/Abuse	304.6x, 305.9x	1,168	5.7	643	6.3	525	5.2
Other Disorders, All Mentions							
Autism Spectrum Disorders	299.00, 299.80	131	0.6	97	0.9	34	0.3
ADD/ADHD	314.0x	936	4.6	664	6.4	272	2.7
Developmental Delay	315.xx	385	1.9	219	2.2	166	1.7
Anorexia Nervosa and Bulimia	307.1, 307.51	92	0.5	11	0.1	81	0.8

Note: Except for age-specific rates, all rates are age-adjusted to the 2000 U.S. Standard Population.

Table 19 on the following page indicates the numbers and rates of inpatient hospital discharges by age group when a mental disorder is listed as one of the nine diagnoses during that hospitalization.

- The rates of inpatient hospital discharge for primary or secondary diagnoses of psychoses increased with age, from a low of 15.8 per 10,000 among those less than 15 years of age to a high of 279.5 per 10,000 among those 65 and older.
- The number of schizophrenia hospital discharges increased dramatically between those less than 15 years of age to those 15-44 years of age. Schizophrenia hospital discharge rates were highest in the 45-64 year age group (22.2 per 10,000), followed by the 15-44 year age group (17.9 per 10,000).
- Among the mood disorders, hospital discharges for both major depressive disorder and bipolar disorders were more common in the age groups 15-44 years and 45-65 years, and were similar across these two age groups.
- Hospital discharge rates for dysthymia and depressive disorders, nos increased with age, to highs of 23.4 per 10,000 and 97.6 per 10,000, respectively in the 65 and older age group.
- Hospital discharge rates for alcohol dependence syndrome were higher than discharge rates for non-dependent abuse of alcohol in the 15-44, 45-64, and 65 and older age groups.
- Hospital discharge rates for alcohol dependence syndrome were almost two times higher in the 45-64 year age group (52.7 per 10,000) compared to the 15-44 year age group (28.9 per 10,000).
- The rates of inpatient hospital discharge for non-dependent abuse of alcohol were similar in the 15-44 (22.8 per 10,000) and 45-64 (23.3 per 10,000) year age groups, and declined in the 65 and older age group.
- Hospital discharge rates for both drug dependence (27.1 per 10,000) and non-dependent abuse of drugs (43.3 per 10,000) were highest in the 15-44 year age group, and declined with age. This age pattern was the same for every drug-specific category of dependence/abuse.
- Hospital discharges for non-dependent abuse of drugs were more common than discharges for drug dependence across all the age groups except those 65 and older.

Table 19: Number and Rate of Inpatient Hospital Discharges for Mental Disorders by Age and All-listed Diagnoses

Category of All-Listed Diagnoses	ICD-9-CM Codes	< 15 Years		15 - 44 Years		45 - 64 Years		65 + Years	
		Number	Rate	Number	Rate	Number	Rate	Number	Rate
Anxiety Disorders, All Mentions									
Generalized Anxiety Disorder and Anxiety, nos	300.00, 300.02	88	2.2	1,432	16.7	1,552	29.5	1,221	45.9
Obsessive Compulsive Disorder	300.3	23	0.6	166	1.9	88	1.7	17	0.6
Post-Traumatic Stress Disorder	309.81	215	5.3	1,249	14.6	660	12.6	79	3.0
Mood Disorders, All Mentions									
Major Depressive Disorder	296.2, 296.3	177	4.4	1,814	21.2	1,179	22.4	488	18.4
Dysthymia	300.4	22	0.5	645	7.5	815	15.5	623	23.4
Bipolar I and II Disorders	296.4 - 296.7	70	1.7	1,292	15.1	707	13.5	162	6.1
Depressive Disorders, nos	311	131	3.2	2,408	28.1	2,868	54.6	2,593	97.6
Psychoses, All Mentions									
Psychoses	290 - 299	642	15.8	8,143	95.0	6,026	114.7	7,427	279.5
Senile and Presenile Dementia	290, 290.0, 290.2, 290.3	0	0.0	0	0.0	4	0.1	388	14.6
Alcoholic Psychoses	291.x	1	0.0	1,031	12.0	1,343	25.6	300	11.3
Drug Psychoses	292.x	24	0.6	612	7.1	398	7.6	373	14.0
Schizophrenia	295.x	16	0.4	1,534	17.9	1,165	22.2	249	9.4
Substance Disorders, All Mentions									
Alcohol Dependence Syndrome	303.xx	2	0.0	2,473	28.9	2,767	52.7	535	20.1
Non-dependent Abuse of Alcohol	305.0x	83	2.0	1,958	22.8	1,224	23.3	340	12.8
Drug Dependence	304.xx	28	0.7	2,319	27.1	1,009	19.2	133	5.0
Non-dependent Abuse of Drugs	305.2x - 305.9x	117	2.9	3,709	43.3	1,231	23.4	58	2.2
Opioid Type Dependence/Abuse	304.0x, 304.7x, 305.5x	13	0.3	1,464	17.1	775	14.8	90	3.4
Cocaine Dependence/Abuse	304.2x, 305.6x	18	0.4	1,579	18.4	538	10.2	8	0.3
Cannabis Dependence/Abuse	304.3x, 305.2x	118	2.9	2,190	25.6	436	8.3	16	0.6
Amphetamine/Other Psycho-stimulant Type Dependence/Abuse	304.4x, 305.7x	3	0.1	957	11.2	192	3.7	0	0.0
Other Specified Drug Dependence/Abuse	304.6x, 305.9x	13	0.3	805	9.4	325	6.2	25	0.9
Other Disorders, All Mentions									
Autism Spectrum Disorders	299.00, 299.80	48	1.2	69	0.8	11	0.2	3	0.1
ADD/ADHD	314.0x	384	9.5	469	5.5	77	1.5	6	0.2
Developmental Delay	315.xx	193	4.8	161	1.9	21	0.4	10	0.4
Anorexia Nervosa and Bulimia	307.1, 307.51	6	0.1	73	0.9	12	0.2	1	0.0

Appendix



Appendix Table 1: Number of Discharges by First-listed Diagnosis and Age, New Mexico, 2008 - Expanded Listing

Category of First-listed Diagnosis	ICD-9-CM Codes	< 15 Years	15 - 44 Years	45 - 64 Years	65 + Years
Infectious and Parasitic Diseases	001 - 139	516	974	1,546	2,726
Septicemia	38	57	432	953	1,943
Neoplasms	140 - 239	114	1,175	2,947	3,139
Malignant Neoplasms	140 - 208, 230 - 234	83	486	1,956	2,690
Malignant Neoplasms of Large Intestine and Rectum	153 - 154, 197.5	0	33	231	417
Malignant Neoplasms of Trachea, Bronchus, and Lung	162, 176.4, 197.0, 197.3	2	10	157	386
Benign Neoplasms	210 - 229	28	647	898	286
Benign Neoplasms of Uterus	218 - 219	0	506	585	9
Endocrine, Nutritional and Metabolic Diseases, and Immunity Disorders	240 - 279	706	1,312	1,726	2,228
Diabetes Mellitus	250	116	847	985	726
Volume Depletion	276.5	478	199	247	661
Diseases of the Blood and Blood-Forming Organs	280 - 289	204	240	368	665
Anemias	280 - 285	40	132	200	476
Mental Disorders	290 - 319	837	7,493	3,834	945
Psychoses	290 - 299	450	5,356	3,069	789
Schizophrenic Disorders	295	12	1,164	687	72
Major Depressive Disorder	296.2, 296.3	135	1,297	752	198
Diseases of the Nervous System and Sense Organs	320 - 389	286	784	772	903
Diseases of the Circulatory System	390 - 459	73	1,443	6,304	13,286
Essential Hypertension	401	4	62	138	169
Heart Disease	391-392.0, 393-398,402,404,410-416,420-429	34	835	4,288	8,879
Acute Myocardial Infarction	410	0	129	1,059	1,617
Coronary Atherosclerosis	414.0	0	76	1,101	1,596
Other Ischemic Heart Disease	411 - 413, 414.1 - 414.9	0	38	192	187
Cardiac Dysrhythmias	427	18	153	566	1,776
Congestive Heart Failure	428.0, 428.2 - 428.4	4	109	668	2,463
Cerebrovascular Disease	430 - 438	3	169	951	2,554
Diseases of the Respiratory System	460 - 519	3,912	1,657	3,692	7,905
Acute Bronchitis and Bronchiolitis	466	1,522	41	102	181
Pneumonia	480 - 486	1,037	588	1,318	3,378
Chronic Bronchitis	491	4	23	649	1,670
Asthma	493	706	343	438	410
Diseases of the Digestive System	520 - 579	972	4,913	5,998	6,240
Appendicitis	540 - 543	461	877	419	141
Non-Infectious Enteritis and Colitis	555 - 558	128	321	381	452
Intestinal Obstruction	560	64	161	412	860
Diverticula of Intestine	562	0	201	427	628
Cholelithiasis	574	11	869	680	648
Acute Pancreatitis	577.0	18	645	554	359
Diseases of the Genitourinary System	580 - 629	382	2,791	2,750	3,645
Calculus of Kidney and Ureter	592	12	300	297	146
Urinary Tract Infection	599.0	116	155	255	1,318
Complications of Pregnancy, Childbirth, and Puerperium	630 - 677	10	4,571	20	0
Diseases of the Skin and Subcutaneous Tissue	680 - 709	353	1,101	1,214	905
Cellulitis and Abscess	681 - 682	288	971	1,040	686
Diseases of the Musculoskeletal System and Connective Tissue	710 - 739	136	1,137	3,513	4,361
Osteoarthritis and allied Disorders	715	1	105	1,662	2,403
Intervertebral Disc Disorders	722	1	340	499	313
Congenital Anomalies	740 - 759	459	110	97	42
Certain Conditions Originating in the Perinatal Period	760 - 779	1,093	2	0	0
Symptoms, Signs, and Ill-Defined Conditions	780 - 799	503	1,110	2,316	2,834
Injury and Poisoning	800 - 999	749	4,086	3,891	5,701
Fractures, All Sites	800 - 829	257	1,089	1,027	2,997
Fracture of Neck of Femur	820	9	42	210	1,694
Poisonings	960 - 989	80	1,022	584	218
Certain Complications of Surgical and Medical Care	996 - 999	169	891	1,666	1,717
Supplementary Classifications	V01 - V84	305	26,061	1,635	3,473
Females with Deliveries	V27	27	25,240	42	0

Appendix Table 2: Number of Discharges by First-listed Diagnosis and Gender, New Mexico, 2008 - Expanded Listing

Category of First-listed Diagnosis	ICD-9-CM Codes	Males	Females
Infectious and Parasitic Diseases	001 - 139	2,772	2,990
Septicemia	38	1,681	1,704
Neoplasms	140 - 239	2,931	4,444
Malignant Neoplasms	140 - 208, 230 - 234	2,529	2,686
Malignant Neoplasms of Large Intestine and Rectum	153 - 154, 197.5	326	355
Malignant Neoplasms of Trachea, Bronchus, and Lung	162, 176.4, 197.0, 197.3	280	275
Benign Neoplasms	210 - 229	256	1,603
Benign Neoplasms of Uterus	218 - 219	0	1,100
Endocrine, Nutritional and Metabolic Diseases, and Immunity Disorders	240 - 279	2,735	3,237
Diabetes Mellitus	250	1,453	1,221
Volume Depletion	276.5	670	915
Diseases of the Blood and Blood-Forming Organs	280 - 289	634	843
Anemias	280 - 285	324	524
Mental Disorders	290 - 319	6,918	6,191
Psychoses	290 - 299	4,989	4,675
Schizophrenic Disorders	295	1,237	698
Major Depressive Disorder	296.2, 296.3	958	1,424
Diseases of the Nervous System and Sense Organs	320 - 389	1,303	1,442
Diseases of the Circulatory System	390 - 459	11,198	9,908
Essential Hypertension	401	140	233
Heart Disease	391-392.0, 393-398, 402, 404, 410-416, 420-429	7,741	6,295
Acute Myocardial Infarction	410	1,757	1,048
Coronary Atherosclerosis	414.0	1,771	1,002
Other Ischemic Heart Disease	411 - 413, 414.1 - 414.9	223	194
Cardiac Dysrhythmias	427	1,204	1,309
Congestive Heart Failure	428.0, 428.2 - 428.4	1,605	1,639
Cerebrovascular Disease	430 - 438	1,678	1,999
Diseases of the Respiratory System	460 - 519	8,360	8,806
Acute Bronchitis and Bronchiolitis	466	934	912
Pneumonia	480 - 486	3,101	3,220
Chronic Bronchitis	491	1,055	1,291
Asthma	493	788	1,109
Diseases of the Digestive System	520 - 579	8,470	9,653
Appendicitis	540 - 543	1,023	875
Non-Infectious Enteritis and Colitis	555 - 558	464	818
Intestinal Obstruction	560	683	814
Diverticula of Intestine	562	571	685
Cholelithiasis	574	694	1,514
Acute Pancreatitis	577.0	824	752
Diseases of the Genitourinary System	580 - 629	2,657	6,911
Calculus of Kidney and Ureter	592	347	408
Urinary Tract Infection	599.0	542	1,302
Complications of Pregnancy, Childbirth, and Puerperium	630 - 677	0	4,601
Diseases of the Skin and Subcutaneous Tissue	680 - 709	1,992	1,581
Cellulitis and Abscess	681 - 682	1,697	1,288
Diseases of the Musculoskeletal System and Connective Tissue	710 - 739	3,967	5,180
Osteoarthritis and allied Disorders	715	1,649	2,522
Intervertebral Disc Disorders	722	568	585
Congenital Anomalies	740 - 759	368	340
Certain Conditions Originating in the Perinatal Period	760 - 779	588	507
Symptoms, Signs, and Ill-Defined Conditions	780 - 799	2,898	3,865
Injury and Poisoning	800 - 999	7,038	7,389
Fractures, All Sites	800 - 829	2,321	3,049
Fracture of Neck of Femur	820	585	1,370
Poisonings	960 - 989	867	1,037
Certain Complications of Surgical and Medical Care	996 - 999	2,167	2,276
Supplementary Classifications	V01 - V84	2,652	28,822
Females with Deliveries	V27	1	25,308

Appendix Table 3: Number of Discharges by First-listed Diagnosis and Region, New Mexico, 2008 - Expanded Listing

Category of First-listed Diagnosis	ICD-9-CM	NW	NE	Central	SE	SW
Infectious and Parasitic Diseases	001 - 139	1,067	1,049	1,666	1,048	932
Septicemia	38	677	655	881	661	511
Neoplasms	140 - 239	1,406	1,166	2,494	834	1,475
Malignant Neoplasms	140 - 208, 230 - 234	1,010	780	1,751	560	1,114
Malignant Neoplasms of Large Intestine and Rectum	153 - 154, 197.5	139	105	205	77	155
Malignant Neoplasms of Trachea, Bronchus, and Lung	162, 176.4, 197.0, 197.3	109	100	155	66	125
Benign Neoplasms	210 - 229	354	336	645	234	290
Benign Neoplasms of Uterus	218 - 219	198	210	373	153	166
Endocrine, Nutritional and Metabolic Diseases, and Immunity Disorders	240 - 279	976	934	1,487	1,217	1,358
Diabetes Mellitus	250	494	444	714	439	583
Volume Depletion	276.5	157	252	276	443	457
Diseases of the Blood and Blood-Forming Organs	280 - 289	216	199	465	263	334
Anemias	280 - 285	104	117	222	180	225
Mental Disorders	290 - 319	2,199	1,584	3,897	2,270	3,159
Psychoses	290 - 299	1,455	1,129	2,859	1,801	2,420
Schizophrenic Disorders	295	223	262	614	359	477
Major Depressive Disorder	296.2, 296.3	434	268	625	204	851
Diseases of the Nervous System and Sense Organs	320 - 389	523	430	841	391	560
Diseases of the Circulatory System	390 - 459	4,040	3,055	6,048	2,637	5,326
Essential Hypertension	401	52	49	109	87	76
Heart Disease	391-392.0, 393 -398, 402, 404, 410-416, 420-429	2,737	2,026	3,810	1,742	3,721
Acute Myocardial Infarction	410	634	417	860	271	623
Coronary Atherosclerosis	414.0	505	294	659	248	1,067
Other Ischemic Heart Disease	411 - 413, 414.1 - 414.9	93	42	56	84	142
Cardiac Dysrhythmias	427	481	378	718	326	610
Congestive Heart Failure	428.0, 428.2 - 428.4	593	529	815	563	744
Cerebrovascular Disease	430 - 438	704	537	1,281	435	720
Diseases of the Respiratory System	460 - 519	3,175	2,850	4,120	3,445	3,576
Acute Bronchitis and Bronchiolitis	466	446	288	420	385	307
Pneumonia	480 - 486	1,115	1,109	1,487	1,194	1,416
Chronic Bronchitis	491	353	369	462	562	600
Asthma	493	306	258	482	467	384
Diseases of the Digestive System	520 - 579	3,336	3,117	5,327	2,669	3,674
Appendicitis	540 - 543	375	271	613	252	387
Non-Infectious Enteritis and Colitis	555 - 558	192	202	333	266	289
Intestinal Obstruction	560	256	266	407	221	347
Diverticula of Intestine	562	212	260	386	159	239
Cholelithiasis	574	464	317	646	315	466
Acute Pancreatitis	577.0	251	289	495	231	310
Diseases of the Genitourinary System	580 - 629	1,553	1,477	2,630	1,833	2,075
Calculus of Kidney and Ureter	592	131	119	178	148	179
Urinary Tract Infection	599.0	271	221	490	356	506
Complications of Pregnancy, Childbirth, and Puerperium	630 - 677	838	514	1,526	865	858
Diseases of the Skin and Subcutaneous Tissue	680 - 709	623	562	1,078	582	728
Cellulitis and Abscess	681 - 682	501	482	891	506	605
Diseases of the Musculoskeletal System and Connective Tissue	710 - 739	1,864	1,353	3,078	1,110	1,742
Osteoarthritis and allied Disorders	715	876	581	1,414	584	716
Intervertebral Disc Disorders	722	204	164	416	82	287
Congenital Anomalies	740 - 759	161	111	251	67	118
Certain Conditions Originating in the Perinatal Period	760 - 779	269	178	322	153	173
Symptoms, Signs, and Ill-Defined Conditions	780 - 799	1,240	1,172	1,610	1,234	1,507
Injury and Poisoning	800 - 999	2,919	2,477	4,519	1,824	2,688
Fractures, All Sites	800 - 829	1,070	964	1,652	691	993
Fracture of Neck of Femur	820	332	332	590	287	414
Poisonings	960 - 989	269	362	579	280	414
Certain Complications of Surgical and Medical Care	996 - 999	962	638	1,406	521	916
Supplementary Classifications	V01 - V84	5,763	4,135	10,926	4,804	5,846
Females with Deliveries	V27	4,653	3,359	8,470	4,083	4,744

Appendix Table 4: Rate of Discharges by First-listed Diagnosis, New Mexico (2008) and U.S (2006) - Expanded Listing

Category of First-listed Diagnosis	ICD-9-CM Codes	Rate per 10,000 Population	
		NM	U.S.
Infectious and Parasitic Diseases	001 - 139	30.4	36.5
Septicemia	38	18.1	17.8
Neoplasms	140 - 239	35.3	55.0
Malignant Neoplasms	140 - 208, 230 - 234	24.9	40.5
Malignant Neoplasms of Large Intestine and Rectum	153 - 154, 197.5	3.3	5.2
Malignant Neoplasms of Trachea, Bronchus, and Lung	162, 176.4, 197.0, 197.3	2.6	5.6
Benign Neoplasms	210 - 229	8.9	12.7
Benign Neoplasms of Uterus	218 - 219	5.3	7.1
Endocrine, Nutritional and Metabolic Diseases, and Immunity Disorders	240 - 279	30.6	55.8
Diabetes Mellitus	250	12.9	19.6
Volume Depletion	276.5	8.7	16.1
Diseases of the Blood and Blood-Forming Organs	280 - 289	7.6	15.1
Anemias	280 - 285	4.5	10.6
Mental Disorders	290 - 319	63.9	81.1
Psychoses	290 - 299	47.2	58.6
Schizophrenic Disorders	295	9.4	11.2
Major Depressive Disorder	296.2, 296.3	11.5	15.4
Diseases of the Nervous System and Sense Organs	320 - 389	14.0	20.6
Diseases of the Circulatory System	390 - 459	110.0	206.6
Essential Hypertension	401	1.9	9.8
Heart Disease	391-392.0, 393-398, 402,404, 410-416, 420-429	73.1	140.9
Acute Myocardial Infarction	410	14.3	21.7
Coronary Atherosclerosis	414.0	12.9	32.0
Other Ischemic Heart Disease	411 - 413, 414.1 - 414.9	2.0	5.4
Cardiac Dysrhythmias	427	13.5	25.9
Congestive Heart Failure	428.0, 428.2 - 428.4	18.5	36.9
Cerebrovascular Disease	430 - 438	19.8	29.8
Diseases of the Respiratory System	460 - 519	91.7	116.9
Acute Bronchitis and Bronchiolitis	466	10.1	7.3
Pneumonia	480 - 486	35.3	41.3
Chronic Bronchitis	491	11.8	17.2
Asthma	493	9.6	14.9
Diseases of the Digestive System	520 - 579	90.9	117.9
Appendicitis	540 - 543	9.2	10.7
Non-Infectious Enteritis and Colitis	555 - 558	6.6	11.9
Intestinal Obstruction	560	8.0	10.8
Diverticula of Intestine	562	6.4	10.5
Cholelithiasis	574	10.9	11.2
Acute Pancreatitis	577.0	7.8	7.8
Diseases of the Genitourinary System	580 - 629	49.6	66.2
Calculus of Kidney and Ureter	592	3.6	5.6
Urinary Tract Infection	599.0	11.0	16.0
Complications of Pregnancy, Childbirth, and Puerperium	630 - 677	23.4	17.4
Diseases of the Skin and Subcutaneous Tissue	680 - 709	18.1	26.2
Cellulitis and Abscess	681 - 682	15.1	19.7
Diseases of the Musculoskeletal System and Connective Tissue	710 - 739	43.7	66.0
Osteoarthritis and allied Disorders	715	19.2	25.3
Intervertebral Disc Disorders	722	5.4	10.9
Congenital Anomalies	740 - 759	3.7	6.5
Certain Conditions Originating in the Perinatal Period	760 - 779	6.0	6.7
Symptoms, Signs, and Ill-Defined Conditions	780 - 799	34.3	6.3
Injury and Poisoning	800 - 999	75.9	99.5
Fractures, All Sites	800 - 829	31.1	36.0
Fracture of Neck of Femur	820	12.8	11.1
Poisonings	960 - 989	9.2	9.1
Certain Complications of Surgical and Medical Care	996 - 999	21.4	30.6
Supplementary Classifications	V01 - V84	160.7	168.4
Females with Deliveries	V27	128.5	138.4

Note: Rates are age-adjusted to the 2000 U.S. Standard Population.

Appendix Table 5: Rate of Discharges by First-listed Diagnosis and Age, New Mexico, 2008 - Expanded Listing

Category of First-listed Diagnosis	ICD-9-CM Codes	Rate Per 10,000 Population			
		< 15 Years	15 - 44 Years	45 - 64 Years	65 + Years
Infectious and Parasitic Diseases	001 - 139	12.7	11.3	29.4	102.6
Septicemia	38	1.4	5.0	18.1	73.1
Neoplasms	140 - 239	2.8	13.7	56.2	118.0
Malignant Neoplasms	140 - 208, 230 - 234	2.0	5.7	37.3	101.2
Malignant Neoplasms of Large Intestine and Rectum	153 - 154, 197.5	0.0	0.4	4.4	15.7
Malignant Neoplasms of Trachea, Bronchus, and Lung	162, 176.4, 197.0, 197.3	0.0	0.1	3.0	14.5
Benign Neoplasms	210 - 229	0.7	7.5	17.1	10.7
Benign Neoplasms of Uterus	218 - 219	0.0	5.9	11.1	0.3
Endocrine, Nutritional and Metabolic Diseases, and Immunity Disorders	240 - 279	17.5	15.3	32.9	83.8
Diabetes Mellitus	250	2.9	9.9	18.8	27.3
Volume Depletion	276.5	11.8	2.3	4.7	24.9
Diseases of the Blood and Blood-Forming Organs	280 - 289	5.0	2.8	7.0	25.0
Anemias	280 - 285	1.0	1.5	3.8	17.9
Mental Disorders	290 - 319	20.6	87.4	73.0	35.6
Psychoses	290 - 299	11.1	62.5	58.4	29.7
Schizophrenic Disorders	295	0.3	13.6	13.1	2.7
Major Depressive Disorder	296.2, 296.3	3.3	15.1	14.3	7.5
Diseases of the Nervous System and Sense Organs	320 - 389	7.0	9.1	14.7	34.0
Diseases of the Circulatory System	390 - 459	1.8	16.9	120.1	500.0
Essential Hypertension	401	0.1	0.7	2.6	6.4
Heart Disease	391-392.0, 393-398,402, 404, 410-416,420-429	0.8	9.8	81.8	334.1
Acute Myocardial Infarction	410	0.0	1.5	20.2	60.8
Coronary Atherosclerosis	414.0	0.0	0.9	21.0	60.1
Other Ischemic Heart Disease	411 - 413, 414.1 - 414.9	0.0	0.4	3.7	7.0
Cardiac Dysrhythmias	427	0.4	1.8	10.8	66.8
Congestive Heart Failure	428.0, 428.2 - 428.4	0.1	1.3	12.7	92.7
Cerebrovascular Disease	430 - 438	0.1	2.0	18.1	96.1
Diseases of the Respiratory System	460 - 519	96.4	19.4	70.3	297.4
Acute Bronchitis and Bronchiolitis	466	37.5	0.5	1.9	6.8
Pneumonia	480 - 486	25.6	6.9	25.1	127.1
Chronic Bronchitis	491	0.1	0.3	12.4	62.8
Asthma	493	17.4	4.0	8.3	15.4
Diseases of the Digestive System	520 - 579	24.0	57.2	114.1	234.8
Appendicitis	540 - 543	11.4	10.2	8.0	5.3
Non-Infectious Enteritis and Colitis	555 - 558	3.2	3.7	7.3	17.0
Intestinal Obstruction	560	1.6	1.9	7.8	32.4
Diverticula of Intestine	562	0.0	2.3	8.1	23.6
Cholelithiasis	574	0.3	10.1	12.9	24.4
Acute Pancreatitis	577.0	0.4	7.5	10.5	13.5
Diseases of the Genitourinary System	580 - 629	9.5	32.6	52.4	137.2
Calculus of Kidney and Ureter	592	0.3	3.5	5.7	5.5
Urinary Tract Infection	599.0	2.9	1.8	4.9	49.6
Complications of Pregnancy, Childbirth, and Puerperium	630 - 677	0.2	53.3	0.4	0.0
Diseases of the Skin and Subcutaneous Tissue	680 - 709	8.7	12.8	23.1	34.0
Cellulitis and Abscess	681 - 682	7.1	11.3	19.8	25.8
Diseases of the Musculoskeletal System and Connective Tissue	710 - 739	3.3	13.3	66.8	164.1
Osteoarthritis and allied Disorders	715	0.0	1.2	31.6	90.4
Intervertebral Disc Disorders	722	0.0	4.0	9.5	11.8
Congenital Anomalies	740 - 759	11.3	1.3	1.8	1.6
Certain Conditions Originating in the Perinatal Period	760 - 779	26.9	0.0	0.0	0.0
Symptoms, Signs, and Ill-Defined Conditions	780 - 799	12.4	13.0	44.1	106.6
Injury and Poisoning	800 - 999	18.5	47.6	74.1	214.4
Fractures, All Sites	800 - 829	6.3	12.7	19.6	112.7
Fracture of Neck of Femur	820	0.2	0.5	4.0	63.7
Poisonings	960 - 989	2.0	11.9	11.1	8.2
Certain Complications of Surgical and Medical Care	996 - 999	4.2	10.4	31.7	64.6
Supplementary Classifications	V01 - V84	7.6	304.1	31.1	130.7
Females with Deliveries	V27	0.7	294.5	0.8	0.0

Appendix Table 6: Rate of discharges by First-listed Diagnosis and Gender, New Mexico, 2008 - Expanded Listing

Category of First-listed Diagnosis	ICD-9-CM Codes	Rate per 10,000 Population	
		Males	Females
Infectious and Parasitic Diseases	001 - 139	31.3	29.7
Septicemia	38	19.5	17.0
Neoplasms	140 - 239	30.3	40.4
Malignant Neoplasms	140 - 208, 230 - 234	26.1	24.1
Malignant Neoplasms of Large Intestine and Rectum	153 - 154, 197.5	3.5	3.2
Malignant Neoplasms of Trachea, Bronchus, and Lung	162, 176.4, 197.0, 197.3	2.9	2.4
Benign Neoplasms	210 - 229	2.6	14.9
Benign Neoplasms of Uterus	218 - 219	0.0	10.4
Endocrine, Nutritional and Metabolic Diseases, and Immunity Disorders	240 - 279	29.0	31.6
Diabetes Mellitus	250	14.6	11.2
Volume Depletion	276.5	7.7	9.5
Diseases of the Blood and Blood-Forming Organs	280 - 289	6.9	8.2
Anemias	280 - 285	3.7	5.1
Mental Disorders	290 - 319	68.3	59.6
Psychoses	290 - 299	49.5	44.9
Schizophrenic Disorders	295	12.2	6.6
Major Depressive Disorder	296.2, 296.3	9.3	13.6
Diseases of the Nervous System and Sense Organs	320 - 389	13.8	14.2
Diseases of the Circulatory System	390 - 459	123.8	97.7
Essential Hypertension	401	1.4	2.3
Heart Disease	391-392.0, 393-398, 402,404,410-416, 420-429	85.4	62.2
Acute Myocardial Infarction	410	18.9	10.2
Coronary Atherosclerosis	414.0	17.6	8.8
Other Ischemic Heart Disease	411 - 413, 414.1 - 414.9	2.3	1.8
Cardiac Dysrhythmias	427	13.9	13.0
Congestive Heart Failure	428.0, 428.2 - 428.4	19.5	17.6
Cerebrovascular Disease	430 - 438	19.4	20.0
Diseases of the Respiratory System	460 - 519	95.2	88.6
Acute Bronchitis and Bronchiolitis	466	10.2	9.9
Pneumonia	480 - 486	37.0	33.8
Chronic Bronchitis	491	11.7	11.9
Asthma	493	8.3	10.7
Diseases of the Digestive System	520 - 579	88.6	92.8
Appendicitis	540 - 543	10.1	8.4
Non-Infectious Enteritis and Colitis	555 - 558	4.9	8.0
Intestinal Obstruction	560	7.7	8.3
Diverticula of Intestine	562	6.1	6.5
Cholelithiasis	574	7.3	14.6
Acute Pancreatitis	577.0	8.4	7.2
Diseases of the Genitourinary System	580 - 629	30.3	68.2
Calculus of Kidney and Ureter	592	3.4	3.9
Urinary Tract Infection	599.0	7.1	14.1
Complications of Pregnancy, Childbirth, and Puerperium	630 - 677	0.0	47.2
Diseases of the Skin and Subcutaneous Tissue	680 - 709	20.7	15.6
Cellulitis and Abscess	681 - 682	17.6	12.7
Diseases of the Musculoskeletal System and Connective Tissue	710 - 739	40.0	46.5
Osteoarthritis and allied Disorders	715	16.3	21.6
Intervertebral Disc Disorders	722	5.6	5.3
Congenital Anomalies	740 - 759	3.8	3.5
Certain Conditions Originating in the Perinatal Period	760 - 779	6.4	5.7
Symptoms, Signs, and Ill-Defined Conditions	780 - 799	31.1	37.1
Injury and Poisoning	800 - 999	74.7	74.9
Fractures, All Sites	800 - 829	26.3	33.6
Fracture of Neck of Femur	820	8.4	16.0
Poisonings	960 - 989	8.6	9.8
Certain Complications of Surgical and Medical Care	996 - 999	22.1	21.0
Supplementary Classifications	V01 - V84	29.4	293.8
Females with Deliveries	V27	0.0	259.5

Note: Rates are age-adjusted to the 2000 U.S. Standard Population.

Appendix Table 7: Rate of Discharges by First-listed Diagnosis and Region, New Mexico, 2008 - Expanded Listing

Category of First-listed Diagnosis	ICD-9-CM Codes	Rate per 10,000 Population				
		NW	NE	Central	SE	SW
Infectious and Parasitic Diseases	001 - 139	30.2	37.8	26.7	43.4	23.5
Septicemia	38	19.9	23.8	14.0	27.7	13.0
Neoplasms	140 - 239	35.6	35.9	36.2	32.7	35.0
Malignant Neoplasms	140 - 208, 230 - 234	26.2	24.2	25.5	21.7	25.9
Malignant Neoplasms of Large Intestine and Rectum	153 - 154, 197.5	3.8	3.6	3.0	2.9	3.6
Malignant Neoplasms of Trachea, Bronchus, and Lung	162, 176.4, 197.0, 197.3	2.8	3.2	2.3	2.4	2.9
Benign Neoplasms	210 - 229	8.3	10.1	9.3	9.5	7.3
Benign Neoplasms of Uterus	218 - 219	4.5	6.1	5.4	6.5	4.4
Endocrine, Nutritional and Metabolic Diseases, and Immunity Disorders	240 - 279	25.8	32.8	23.6	49.1	34.1
Diabetes Mellitus	250	12.1	14.3	10.7	17.4	14.0
Volume Depletion	276.5	4.4	10.0	4.8	18.2	12.1
Diseases of the Blood and Blood-Forming Organs	280 - 289	5.8	6.8	7.5	10.6	8.5
Anemias	280 - 285	2.9	4.1	3.6	7.4	5.9
Mental Disorders	290 - 319	50.5	51.2	60.6	91.6	77.0
Psychoses	290 - 299	33.8	35.8	44.2	73.0	59.7
Schizophrenic Disorders	295	5.1	8.2	9.4	14.6	11.9
Major Depressive Disorder	296.2, 296.3	9.8	8.5	9.6	7.8	20.5
Diseases of the Nervous System and Sense Organs	320 - 389	13.3	14.7	13.2	16.3	14.0
Diseases of the Circulatory System	390 - 459	116.8	109.6	94.0	107.9	134.4
Essential Hypertension	401	1.3	1.5	1.7	3.6	1.9
Heart Disease	391-392.0,393-398, 402,404, 410-416,420-429	79.0	72.2	59.1	71.6	93.5
Acute Myocardial Infarction	410	17.7	13.9	13.0	11.0	15.7
Coronary Atherosclerosis	414.0	12.7	8.5	9.2	9.4	24.5
Other Ischemic Heart Disease	411 - 413, 414.1 - 414.9	2.3	1.3	0.9	3.4	3.3
Cardiac Dysrhythmias	427	14.3	13.8	11.5	13.5	15.9
Congestive Heart Failure	428.0, 428.2 - 428.4	19.9	21.2	13.7	23.9	20.5
Cerebrovascular Disease	430 - 438	21.3	20.7	20.2	17.8	18.9
Diseases of the Respiratory System	460 - 519	89.3	109.0	67.2	139.4	92.8
Acute Bronchitis and Bronchiolitis	466	11.3	12.1	7.5	15.9	7.9
Pneumonia	480 - 486	33.6	44.7	24.6	49.8	38.9
Chronic Bronchitis	491	10.3	12.7	6.9	21.2	14.7
Asthma	493	7.7	9.2	7.8	18.7	9.1
Diseases of the Digestive System	520 - 579	88.0	103.8	82.4	106.7	90.2
Appendicitis	540 - 543	8.3	9.1	9.7	10.0	9.3
Non-Infectious Enteritis and Colitis	555 - 558	5.2	6.9	5.3	10.8	7.2
Intestinal Obstruction	560	7.8	9.5	6.5	9.2	8.9
Diverticula of Intestine	562	6.0	8.8	6.0	6.3	5.9
Cholelithiasis	574	11.7	10.7	10.1	12.4	11.0
Acute Pancreatitis	577.0	6.2	9.7	7.5	9.4	7.5
Diseases of the Genitourinary System	580 - 629	42.7	50.8	41.5	75.5	53.8
Calculus of Kidney and Ureter	592	3.0	3.6	2.6	6.0	4.6
Urinary Tract Infection	599.0	9.7	9.2	8.8	15.1	14.5
Complications of Pregnancy, Childbirth, and Puerperium	630 - 677	20.0	19.6	25.0	33.8	20.8
Diseases of the Skin and Subcutaneous Tissue	680 - 709	15.9	19.3	16.7	23.7	18.5
Cellulitis and Abscess	681 - 682	12.7	16.6	13.8	20.5	15.4
Diseases of the Musculoskeletal System and Connective Tissue	710 - 739	47.3	41.4	44.6	42.5	41.7
Osteoarthritis and allied Disorders	715	22.3	16.8	19.7	21.5	16.0
Intervertebral Disc Disorders	722	4.9	4.9	6.1	3.2	6.8
Congenital Anomalies	740 - 759	3.8	4.4	4.2	2.7	2.9
Certain Conditions Originating in the Perinatal Period	760 - 779	6.7	7.9	5.8	6.3	4.5
Symptoms, Signs, and Ill-Defined Conditions	780 - 799	33.7	38.6	25.2	49.5	38.1
Injury and Poisoning	800 - 999	79.3	89.1	72.3	76.4	70.0
Fractures, All Sites	800 - 829	32.8	38.3	28.6	30.9	28.8
Fracture of Neck of Femur	820	12.8	15.4	11.2	13.5	13.1
Poisonings	960 - 989	6.2	11.8	8.8	11.2	10.1
Certain Complications of Surgical and Medical Care	996 - 999	24.2	20.6	20.7	20.6	21.5
Supplementary Classifications	V01 - V84	141.3	155.6	177.8	189.3	142.0
Females with Deliveries	V27	110.0	128.5	138.7	160.7	113.3

Note: Rates are age-adjusted to the 2000 U.S. Standard Population.

Appendix Table 8: Average Length of Stay by First-listed Diagnosis and Age, New Mexico, 2008 - Expanded Listing

Category of First-listed Diagnosis	Diagnosis Codes	< 15 Years	15 – 44 Years	45 – 64 Years	65+ Years
Infectious and Parasitic Diseases	001 - 139	4.0	7.2	7.6	6.6
Septicemia	38	10.8	8.3	8.5	6.8
Neoplasms	140 - 239	6.9	4.2	5.1	6.1
Malignant Neoplasms	140 - 208, 230 - 234	8.1	6.4	6.0	6.3
Malignant Neoplasms of Large Intestine and Rectum	153 - 154, 197.5	0.0	7.5	7.1	8.1
Malignant Neoplasms of Trachea, Bronchus, and Lung	162, 176.4, 197.0, 197.3	4.0	5.0	8.5	6.0
Benign Neoplasms	210 - 229	3.6	2.4	3.0	5.2
Benign Neoplasms of Uterus	218 - 219	0.0	2.0	2.2	2.3
Endocrine, Nutritional and Metabolic Diseases, and Immunity Disorders	240 - 279	3.3	3.8	4.6	4.5
Diabetes Mellitus	250	3.9	3.5	5.6	5.6
Volume Depletion	276.5	2.2	2.3	2.9	3.5
Diseases of the Blood and Blood-Forming Organs	280 - 289	3.8	4.0	4.7	4.4
Anemias	280 - 285	4.1	3.7	3.6	3.8
Mental Disorders	290 - 319	23.5	13.2	10.8	12.7
Psychoses	290 - 299	19.7	9.5	10.7	13.5
Schizophrenic Disorders	295	37.3	14.0	22.5	16.9
Major Depressive Disorder	296.2, 296.3	16.6	8.5	6.3	10.4
Diseases of the Nervous System and Sense Organs	320 - 389	4.5	4.2	5.7	8.3
Diseases of the Circulatory System	390 - 459	4.8	4.4	4.3	4.5
Essential Hypertension	401	2.5	2.1	2.7	2.7
Heart Disease	391-392.0,393-398, 402,404,410-416, 420-429	5.3	4.0	4.0	4.4
Acute Myocardial Infarction	410	0.0	3.1	4.1	4.8
Coronary Atherosclerosis	414.0	0.0	2.7	3.3	3.4
Other Ischemic Heart Disease	411-413, 414.1-414.9	0.0	1.8	1.8	2.5
Cardiac Dysrhythmias	427	3.6	3.2	3.2	3.5
Congestive Heart Failure	428.0, 428.2 - 428.4	9.8	5.0	4.5	4.9
Cerebrovascular Disease	430 - 438	12.7	5.6	5.4	4.6
Diseases of the Respiratory System	460 - 519	3.2	5.0	5.6	5.4
Acute Bronchitis and Bronchiolitis	466	3.1	3.2	2.7	3.6
Pneumonia	480 - 486	3.1	4.4	5.2	5.1
Chronic Bronchitis	491	2.3	3.2	3.9	4.4
Asthma	493	2.6	3.0	3.6	4.2
Diseases of the Digestive System	520 - 579	3.4	3.7	4.7	5.1
Appendicitis	540 - 543	3.1	2.4	3.1	4.8
Non-Infectious Enteritis and Colitis	555 - 558	2.3	3.7	4.3	4.5
Intestinal Obstruction	560	3.7	4.4	6.2	6.7
Diverticula of Intestine	562	0.0	4.7	4.8	4.9
Cholelithiasis	574	2.9	2.9	3.8	4.8
Acute Pancreatitis	577.0	4.7	5.0	5.4	6.4
Diseases of the Genitourinary System	580 - 629	3.4	2.6	3.5	4.2
Calculus of Kidney and Ureter	592	3.4	2.1	2.4	2.9
Urinary Tract Infection	599.0	3.1	3.3	4.7	4.3
Complications of Pregnancy, Childbirth, and Puerperium	630 - 677	4.8	3.4	3.5	0.0
Diseases of the Skin and Subcutaneous Tissue	680 - 709	3.4	5.1	6.2	6.9
Cellulitis and Abscess	681 - 682	3.0	4.1	5.0	5.3
Diseases of the Musculoskeletal System and Connective Tissue	710 - 739	5.2	4.5	4.1	4.1
Osteoarthritis and allied Disorders	715	5.0	3.3	3.5	3.8
Intervertebral Disc Disorders	722	4.0	2.4	2.8	3.2
Congenital Anomalies	740 - 759	6.9	3.9	4.1	4.4
Certain Conditions Originating in the Perinatal Period	760 - 779	7.1	4.0	0.0	0.0
Symptoms, Signs, and Ill-Defined Conditions	780 - 799	2.6	2.6	2.5	2.9
Injury and Poisoning	800 - 999	5.4	4.7	5.9	5.9
Fractures, All Sites	800 - 829	3.8	5.2	5.5	5.7
Fracture of Neck of Femur	820	2.6	8.5	6.4	6.2
Poisonings	960 - 989	1.9	2.6	3.9	3.5
Certain Complications of Surgical and Medical Care	996 - 999	7.9	6.2	6.8	7.0
Supplementary Classifications	V01 - V84	3.7	2.4	12.1	13.9
Females with Deliveries	V27	2.5	2.1	2.8	0.0

Appendix Table 9: Average Length of Stay by First-listed Diagnosis and Gender, New Mexico, 2008 - Expanded Listing

Category of First-listed Diagnosis	ICD-9-CM Codes	Male	Female
Infectious and Parasitic Diseases	001 - 139	7.2	6.2
Septicemia	38	8.1	7.0
Neoplasms	140 - 239	6.4	4.7
Malignant Neoplasms	140 - 208, 230 - 234	6.6	5.9
Malignant Neoplasms of Large Intestine and Rectum	153 - 154, 197.5	7.6	7.8
Malignant Neoplasms of Trachea, Bronchus, and Lung	162, 176.4, 197.0, 197.3	6.9	6.5
Benign Neoplasms	210 - 229	5.6	2.7
Benign Neoplasms of Uterus	218 - 219	0.0	2.1
Endocrine, Nutritional and Metabolic Diseases, and Immunity Disorders	240 - 279	4.5	4.0
Diabetes Mellitus	250	5.1	4.6
Volume Depletion	276.5	2.8	2.9
Diseases of the Blood and Blood-Forming Organs	280 - 289	4.4	4.3
Anemias	280 - 285	3.9	3.6
Mental Disorders	290 - 319	14.9	11.3
Psychoses	290 - 299	11.5	9.9
Schizophrenic Disorders	295	17.9	16.3
Major Depressive Disorder	296.2, 296.3	8.5	8.3
Diseases of the Nervous System and Sense Organs	320 - 389	5.8	6.2
Diseases of the Circulatory System	390 - 459	4.4	4.4
Essential Hypertension	401	2.6	2.6
Heart Disease	391-392.0, 393-398, 402,404, 410-416,420-429	4.2	4.3
Acute Myocardial Infarction	410	4.3	4.8
Coronary Atherosclerosis	414.0	3.3	3.3
Other Ischemic Heart Disease	411 - 413, 414.1 - 414.9	2.0	2.2
Cardiac Dysrhythmias	427	3.3	3.5
Congestive Heart Failure	428.0, 428.2 - 428.4	4.8	4.8
Cerebrovascular Disease	430 - 438	5.3	4.5
Diseases of the Respiratory System	460 - 519	5.0	4.8
Acute Bronchitis and Bronchiolitis	466	3.1	3.3
Pneumonia	480 - 486	4.7	4.8
Chronic Bronchitis	491	4.2	4.3
Asthma	493	2.9	3.5
Diseases of the Digestive System	520 - 579	4.6	4.4
Appendicitis	540 - 543	3.0	2.8
Non-Infectious Enteritis and Colitis	555 - 558	4.2	3.9
Intestinal Obstruction	560	5.9	6.4
Diverticula of Intestine	562	5.0	4.8
Cholelithiasis	574	4.3	3.4
Acute Pancreatitis	577.0	6.0	4.9
Diseases of the Genitourinary System	580 - 629	4.4	3.1
Calculus of Kidney and Ureter	592	2.3	2.5
Urinary Tract Infection	599.0	4.7	4.0
Complications of Pregnancy, Childbirth, and Puerperium	630 - 677	0.0	3.4
Diseases of the Skin and Subcutaneous Tissue	680 - 709	5.8	5.7
Cellulitis and Abscess	681 - 682	4.5	4.7
Diseases of the Musculoskeletal System and Connective Tissue	710 - 739	4.2	4.1
Osteoarthritis and allied Disorders	715	3.5	3.8
Intervertebral Disc Disorders	722	2.6	2.9
Congenital Anomalies	740 - 759	5.1	6.7
Certain Conditions Originating in the Perinatal Period	760 - 779	7.8	6.4
Symptoms, Signs, and Ill-Defined Conditions	780 - 799	2.7	2.7
Injury and Poisoning	800 - 999	5.8	5.3
Fractures, All Sites	800 - 829	5.6	5.4
Fracture of Neck of Femur	820	6.7	6.0
Poisonings	960 - 989	3.2	2.9
Certain Complications of Surgical and Medical Care	996 - 999	7.1	6.4
Supplementary Classifications	V01 - V84	13.3	3.4
Females with Deliveries	V27	1.0	2.2

Appendix Table 10: Average Length of Stay by First-listed Diagnosis and Region, New Mexico, 2008 - Expanded Listing

Category of First-listed Diagnosis	ICD-9-CM Codes	NW	NE	Central	SE	SW
Infectious and Parasitic Diseases	001 - 139	7.4	6.5	7.3	5.2	6.9
Septicemia	38	8.4	7.3	8.1	5.8	7.9
Neoplasms	140 - 239	5.8	5.0	5.4	4.5	5.9
Malignant Neoplasms	140 - 208, 230 - 234	6.7	5.8	6.3	5.1	6.6
Malignant Neoplasms of Large Intestine and Rectum	153 - 154, 197.5	8.0	6.7	7.9	7.7	7.8
Malignant Neoplasms of Trachea, Bronchus, and Lung	162, 176.4, 197.0, 197.3	7.2	5.7	7.1	6.3	6.6
Benign Neoplasms	210 - 229	3.1	3.0	3.2	3.0	3.3
Benign Neoplasms of Uterus	218 - 219	1.9	2.4	2.0	2.2	2.1
Endocrine, Nutritional and Metabolic Diseases, and Immunity Disorders	240 - 279	4.8	4.3	4.8	3.3	4.0
Diabetes Mellitus	250	5.3	4.8	5.6	3.6	4.5
Volume Depletion	276.5	2.8	3.1	3.1	2.4	3.0
Diseases of the Blood and Blood-Forming Organs	280 - 289	5.5	3.6	4.4	3.8	4.4
Anemias	280 - 285	4.0	3.4	3.6	3.9	3.8
Mental Disorders	290 - 319	14.1	18.7	13.3	9.9	11.8
Psychoses	290 - 299	10.3	17.3	11.1	7.8	9.5
Schizophrenic Disorders	295	15.5	34.1	17.0	13.5	12.1
Major Depressive Disorder	296.2, 296.3	9.2	9.9	7.9	9.5	7.6
Diseases of the Nervous System and Sense Organs	320 - 389	6.2	7.5	5.7	6.2	5.0
Diseases of the Circulatory System	390 - 459	4.6	4.3	4.5	3.9	4.5
Essential Hypertension	401	2.4	2.8	2.4	2.7	2.9
Heart Disease	391-392.0, 393-398,402, 404, 410-416,420-429	4.5	4.0	4.3	3.8	4.3
Acute Myocardial Infarction	410	4.7	4.0	4.3	3.9	5.2
Coronary Atherosclerosis	414.0	3.7	3.2	3.5	2.6	3.3
Other Ischemic Heart Disease	411 - 413, 414.1 - 414.9	2.3	1.7	2.4	1.6	2.2
Cardiac Dysrhythmias	427	3.7	2.9	3.4	3.0	3.7
Congestive Heart Failure	428.0, 428.2 - 428.4	5.0	4.8	4.8	4.4	5.0
Cerebrovascular Disease	430 - 438	4.8	5.1	5.1	4.3	4.6
Diseases of the Respiratory System	460 - 519	5.0	4.9	5.5	3.9	5.2
Acute Bronchitis and Bronchiolitis	466	3.3	2.8	3.5	2.7	3.5
Pneumonia	480 - 486	4.8	4.6	5.0	4.0	5.0
Chronic Bronchitis	491	4.2	4.0	4.4	4.0	4.5
Asthma	493	3.0	3.3	3.3	2.8	3.8
Diseases of the Digestive System	520 - 579	4.8	4.4	4.7	3.6	4.7
Appendicitis	540 - 543	2.9	2.6	2.9	2.7	3.1
Non-Infectious Enteritis and Colitis	555 - 558	5.2	4.2	4.5	2.7	3.8
Intestinal Obstruction	560	7.1	5.2	6.5	4.8	6.8
Diverticula of Intestine	562	5.7	4.2	4.7	4.2	5.5
Cholelithiasis	574	4.3	3.9	3.4	3.0	3.8
Acute Pancreatitis	577.0	5.3	5.4	6.2	4.4	5.3
Diseases of the Genitourinary System	580 - 629	3.7	3.4	3.7	2.9	3.6
Calculus of Kidney and Ureter	592	2.6	2.2	2.6	2.1	2.4
Urinary Tract Infection	599.0	4.0	3.8	4.3	3.6	4.6
Complications of Pregnancy, Childbirth, and Puerperium	630 - 677	3.4	3.4	4.4	2.1	2.8
Diseases of the Skin and Subcutaneous Tissue	680 - 709	6.3	5.1	7.0	4.1	5.3
Cellulitis and Abscess	681 - 682	4.6	4.4	5.0	3.8	5.0
Diseases of the Musculoskeletal System and Connective Tissue	710 - 739	4.3	4.4	4.3	4.0	3.7
Osteoarthritis and allied Disorders	715	3.5	3.9	3.6	3.9	3.7
Intervertebral Disc Disorders	722	3.1	2.9	2.9	2.8	2.3
Congenital Anomalies	740 - 759	7.2	5.6	4.9	6.0	6.4
Certain Conditions Originating in the Perinatal Period	760 - 779	7.8	9.7	5.3	5.1	8.5
Symptoms, Signs, and Ill-Defined Conditions	780 - 799	2.6	2.5	3.0	2.4	2.9
Injury and Poisoning	800 - 999	5.9	5.4	6.0	4.5	5.3
Fractures, All Sites	800 - 829	5.6	5.8	5.6	5.2	5.1
Fracture of Neck of Femur	820	6.2	7.1	5.6	6.6	6.2
Poisonings	960 - 989	3.7	2.6	3.5	2.0	3.2
Certain Complications of Surgical and Medical Care	996 - 999	6.9	6.5	7.4	5.8	6.6
Supplementary Classifications	V01 - V84	4.1	4.0	4.6	3.8	4.2
Females with Deliveries	V27	2.1	2.1	2.3	1.8	2.2

New Mexico Health Policy Commission
2055 South Pacheco Street, Suite 200
Santa Fe, New Mexico 87505
Phone: (505) 827-6201
Fax: (505) 424-3222
www.hpc.state.nm.us