

2011 HOSPITAL INPATIENT DISCHARGE DATA



**New Mexico
Department of Health
January 2013**

The New Mexico Department of Health

Interim Secretary of Health

Bradley McGrath

Deputy Secretary

Jim Green

State Epidemiologist

Michael Landen, MD MPH

ACKNOWLEDGEMENTS

The 2011 Hospital Inpatient Discharge Data report was produced by the New Mexico Department of Health (NMDOH) Epidemiology and Response Division. The NMDOH would like to specifically thank Terry Reusser with the Information Technology Services Division of DOH for the collection and reporting of the 2011 hospital inpatient discharge data.

Hospital Inpatient Discharge Data Report Team Members

Department of Health: Nicole Katz, Michael Landen, Sandeep Patel, Terry Reusser, Ed Rose, Noell Stone, and Brian Woods.

Sources of Data

New Mexico Hospital Inpatient Discharge Data: All New Mexico general and specialty hospitals are annually required to report hospital inpatient discharge data to the NMDOH. The NMDOH maintains the Hospital Inpatient Discharge Database (HIDD). The 2011 New Mexico data presented in this report was generated from the HIDD.

United States Hospital Inpatient Discharge Data: U.S. data used for comparison with New Mexico State data was provided by the National Center for Health Statistics' National Health Statistics Reports. The report presents the most current nationally representative data on inpatient care, excluding newborns, in the U.S. Data are from the 2010 National Hospital Discharge Survey, the longest continuously running nationally representative survey of hospital utilization.

State Population Estimates: State population estimates used for the denominator in hospitalization rates were generated by the Bureau of Business and Economic Research (BBER), University of New Mexico. The BBER evaluates all input data and employs a housing unit-based methodology, validated by building permits and birth/death records. Population denominators for 2011 were used. Rates were expressed per 10,000 population and age- adjusted to the 2000 U.S. standard population, when indicated.

Definitions: Definitions for diagnoses and procedures presented in this report may be found at <http://icd9.chrisendres.com>.

Note: Appendices revised July 2013

TABLE OF CONTENTS

EXECUTIVE SUMMARY	1
NEW MEXICO HEALTH AND HUMAN SERVICES REGIONS	3
NEW MEXICO HOSPITALS REPORTING HOSPITAL INPATIENT DISCHARGE DATA IN 2011.....	4
OVERALL HOSPITAL INPATIENT DISCHARGES	5
Percent Distribution of Hospital Inpatient Discharges by Average Length of Stay and Age	5
Number, Rate, and Average Length of Stay for Discharges by Age, Region and Gender	6
Hospital Inpatient Discharge Rates by Age and Gender	7
Hospital Inpatient Discharges by Category of First-listed Diagnosis and Age	8
Hospital Inpatient Discharges by Category of First-listed Diagnosis and Gender.....	9
Hospital Inpatient Discharges by Category of First-listed Diagnosis and Region	10
NM and U.S. Hospital Inpatient Discharge Rates by Category of First-listed Diagnosis	11
Hospital Inpatient Discharge Rates by Category of First-listed Diagnosis and Age.....	12
Hospital Inpatient Discharge Rates by Category of First-listed Diagnosis and Gender	13
Hospital Inpatient Discharge Rates by Category of First-listed Diagnosis and Region.....	14

APPENDIX TABLES

Appendix Table 1: Number of Discharges by First-listed Diagnosis and Age, New Mexico, 2011 – Expanded Listing	
Appendix Table 2: Number of Discharges by First-listed Diagnosis and Gender, New Mexico, 2011 –Expanded Listing	
Appendix Table 3: Number of Discharges by First-listed Diagnosis and Region, New Mexico, 2011 – Expanded Listing	
Appendix Table 4: Rate of Discharges by First-listed Diagnosis, New Mexico (2011) and U.S. (2010) – Expanded Listing	
Appendix Table 5: Rate of Discharges by First-listed Diagnosis and Age, New Mexico, 2011 – Expanded Listing	
Appendix Table 6: Rate of Discharges by First-listed Diagnosis and Gender, New Mexico, 2011 – Expanded Listing	

- Appendix Table 7: Rate of Discharges by First-listed Diagnosis and Region, New Mexico, 2011 – Expanded Listing
- Appendix Table 8: Average Length of Stay by First-listed Diagnosis and Age, New Mexico, 2011 – Expanded Listing
- Appendix Table 9: Average Length of Stay by First-listed Diagnosis and Gender, New Mexico, 2011 – Expanded Listing
- Appendix Table 10: Average Length of Stay by First-listed Diagnosis and Region, New Mexico, 2011 – Expanded Listing

EXECUTIVE SUMMARY

The New Mexico Health Information System (HIS) was established in 1989 pursuant to the Health Information System Act, Section 24-14A-1 through Section 24-14A-10 NMSA 1978. The 2011 New Mexico Legislature amended the New Mexico Health Information Systems Act (24-14A NMSA 1978) authorizing the New Mexico Department of Health (NMDOH) to collect, report on and disseminate Hospital Inpatient Discharge Data (HIDD) from non-federal hospitals in the state. The New Mexico Health Policy Commission formerly carried out these duties. The NMDOH is charged with creating rule regarding the collection, use and reporting of these data (NMAC 7.1.27). The rule relates to several specific areas, including specific information to be reported by state licensed general and specialty hospitals, the data access policy and public reporting requirements.

The NMDOH maintains the Hospital Inpatient Discharge Database (HIDD). This report is based on data generated from the HIDD. The hospital inpatient diagnoses contained in the database were coded using the International Classification of Diseases, Ninth Revision, Clinical Modification (ICD-9-CM). General and specialty hospitals in the state are annually required to report hospital inpatient discharge data to the NMDOH. Federal facilities are not required to report HIDD data to the NMDOH. Therefore, data from Indian Health Service (IHS) facilities and the Veterans Affairs (VA) Hospital are not included. However, the NMDOH is exploring ways to access IHS and VA Hospital data.

An inpatient discharge occurs when a patient is admitted overnight to a hospital and leaves that hospital. Thus, an individual who is transferred from hospital A to hospital B would be included in the discharges from hospital A with a second discharge from hospital B.

This report presents overall New Mexico hospital inpatient discharge numbers, rates, and average lengths of stay by age, gender and region. In 2011, 36 general and 13 specialty hospitals reported hospital inpatient discharge data to the NMDOH. These 49 non-federal hospitals reported a total of 162,212 discharges for New Mexico State residents. Duplicate records and records with out-of-state or unknown zip codes, unknown age, unknown gender, unknown or invalid primary diagnosis codes and discharges that were not inpatient discharges were excluded from this count. Discharges of newborns were also excluded to be consistent with federal reporting standards.

Of the 162,212 reported discharges, approximately 60 percent were among females and 40 percent were among males. Thirty-five percent of all discharges occurred among residents over the age of 65 years. The highest discharge rate by region was 804 discharges per 10,000 population in the Northeast region, and the lowest rates were in the Northeast and Central regions, each reporting 738 discharges per 10,000 population.

Disclaimer

This report is intended to be a reference document for researchers and planners and does not include interpretation or hypotheses. Although data is verified with the submitting hospital, all data and information presented in this report are as submitted by reporting hospitals to the NMDOH. The original data is the responsibility of the submitting hospital.

It is also important to note the difference between the data reported in this report and previous reports. In 2011, first-listed diagnosis refers to a mention of a specific disease or injury ICD-9-CM code in the first of 18 diagnostic fields of a patient's medical record. All-listed diagnoses refer to the mention of a specific disease or injury ICD-9-CM code within any of 18 diagnostic fields of a patient's medical record. In reports prior to 2009, first-listed diagnosis referred to a mention of a specific disease or injury ICD-9-CM code in the first of nine diagnostic fields of a patient's medical record. All-listed diagnoses referred to a mention of a specific disease or injury ICD-9-CM code within any of nine diagnostic fields of a patient's medical record.

Similarly, the Major Diagnostic Categories, Complications of Pregnancy, Childbirth, and Puerperium and Females with Deliveries (a subset of Supplementary Classifications), were calculated differently than they have been in past reports. Females with Deliveries include all those discharges with a primary diagnosis between 650-659 and a V-code of V27-27.9 in any of the other 17 listed diagnoses. These discharges were excluded from the category Complications of Pregnancy, Childbirth, and Puerperium and included in Females with Deliveries. This is different from past reports and does not allow comparability between years.

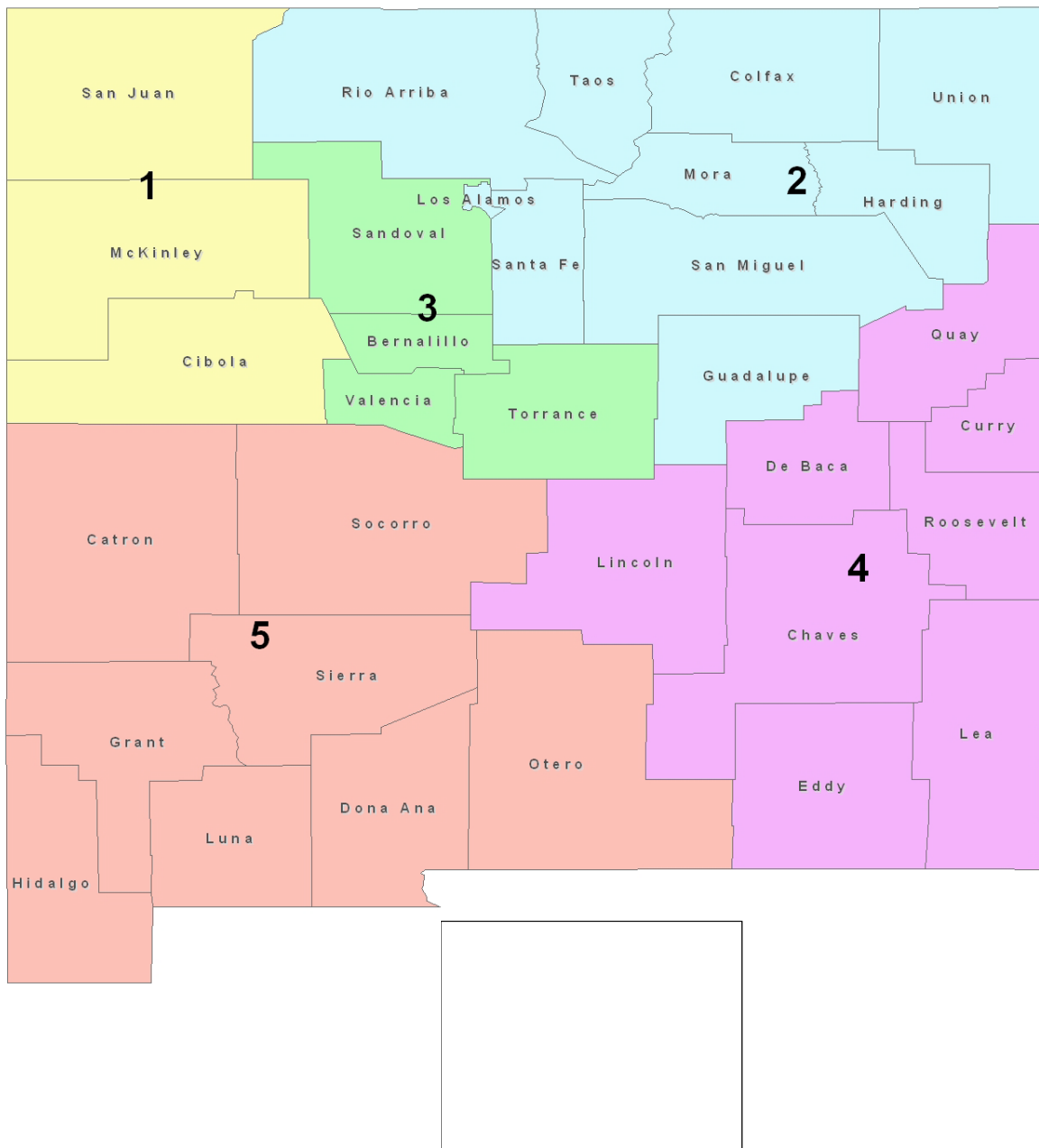
It is also important to note that the geographic regions of the state are not the same as those used for previous reports.

Further, several records were excluded from the data reported in this report. As indicated in the table below, duplicate records and records with out-of-state or unknown zip codes, unknown age, unknown gender, unknown or invalid primary diagnosis codes and discharges that were not inpatient discharges were excluded. Discharges of newborns were excluded to be consistent with federal reporting standards.

Excluded Records 2011 HIDD	
Total Records Collected	228,485
Duplicates	829
Unknown Age	1
Unknown Gender	151
Out-of-State or Unknown Zip Codes	0
Invalid Diagnosis Code (Primary Diagnosis = 000.8)	14
Unknown Primary Diagnosis	183
Newborns	27,515
Not Inpatient	23,489
Remaining Records used in 2011 HIDD Reporting	162,212

NEW MEXICO HEALTH REGIONS

The data in this report is presented by age, gender, and New Mexico Health Regions in 2011. Below is a map of the Health Regions.



NEW MEXICO HOSPITALS REPORTING HOSPITAL INPATIENT DISCHARGE DATA IN 2011

General Hospitals	Specialty Hospitals
Advanced Care Hospital of Southern NM	Healthsouth Rehabilitation Hospital
Alta Vista Regional Hospital	Kindred Hospital Albuquerque
Artesia General Hospital	NM Behavioral Health Institute
Carlsbad Medical Center	NM Rehabilitation Center
CHRISTUS St. Vincent Regional Medical	Peak Behavioral Health Services
Cibola General Hospital	San Juan Regional Rehabilitation Hospital
Dr. Dan C Trigg Memorial Hospital	Specialty Hospital of Albuquerque
Eastern NM Medical Center	Turquoise Lodge
Espanola Hospital	UNM Children's Psychiatric Center
Gerald Champion Regional Medical Center	UNM Psychiatric Center
Gila Regional Medical Center	Mesilla Valley Hospital
Guadalupe County Hospital	Lovelace Rehabilitation Hospital
Holy Cross Hospital	Rehabilitation Hospital of Southern NM
Lea Regional Hospital	
Lincoln County Medical Center	
Los Alamos Medical Center	
Lovelace Medical Center/Heart Hospital of NM	
Lovelace Westside Hospital	
Lovelace Women's Hospital	
Memorial Medical Center	
Mimbres Memorial Hospital	
Miners' Colfax Medical Center	
Mountain View Regional Medical Center	
Nor-Lea General Hospital	
Plains Regional Medical Center - Clovis	
Presbyterian Hospital	
Presbyterian Kaseman Hospital	
Presbyterian Rio Rancho Emergency Center	
Rehoboth McKinley Christian Health	
Roosevelt General Hospital	
Roswell Regional Hospital	
San Juan Regional Medical Center	
Sierra Vista Hospital	
Socorro General Hospital	
Union County General Hospital	
UNM Hospital	

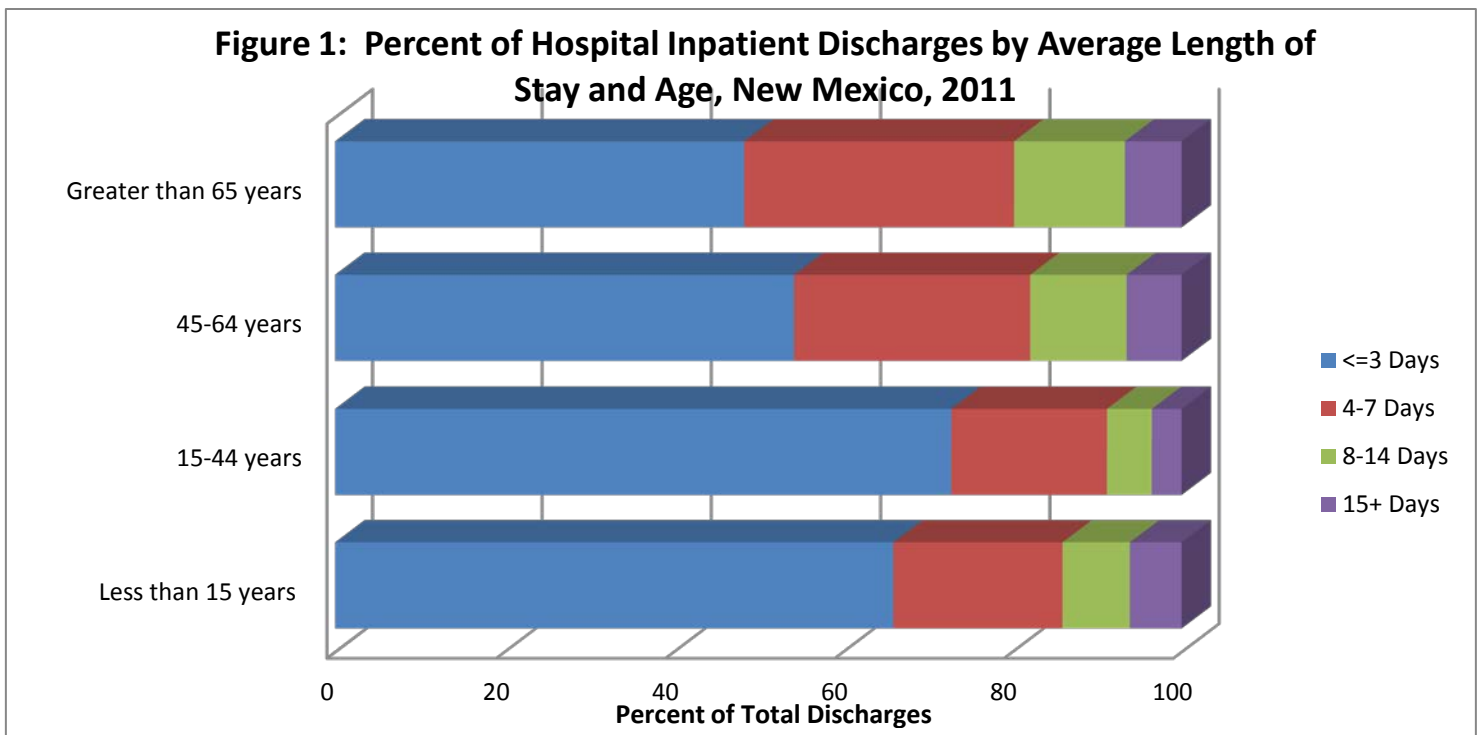
OVERALL HOSPITAL INPATIENT DISCHARGES

This section provides hospital inpatient discharge numbers, rates, and average lengths of stay by age, gender and region for New Mexico in 2011. Included in this section are a series of tables by first-listed diagnosis and a series of tables by all-listed procedures. The first-listed diagnosis refers to a mention of a specific disease or injury ICD-9-CM code in the first of 18 diagnostic fields of a patient's medical record or the first recorded final diagnosis on a patient's medical record.

Percent Distribution of Hospital Inpatient Discharges by Average Length of Stay and Age

The percent distributions of hospital inpatient discharges by average length of stay and age for New Mexico in 2011 are provided in Figure 1:

- 66.0 percent of patients less than 15 years of age, 72.8 percent of patients 15-44 years of age, 54.2 percent of patients 45-64 years of age, and 48.3 percent of patients 65 and older were hospitalized for three days or less;
- 20.0 of patients less than 15 years of age, 18.4 percent of patients 15-44 years of age, 27.9 percent of patients 45-64 years of age, and 31.9 percent of patients 65 and older were hospitalized for four to seven days;
- 8.0 percent of patients less than 15 years of age, 5.3 percent of patients 15-44 years of age, 11.4 percent of patients 45-64 years of age, and 13.1 percent of patients 65 and older were hospitalized for eight to 14 days; and
- 6.1 percent of patients less than 15 years of age, 3.5 percent of patients 15-44 years of age, 6.5 percent of patients 45-64 years of age, and 6.7 percent of patients 65 and older were hospitalized for 15 days or more.



Number, Rate, and Average Length of Stay for Discharges by Age, Region and Gender

162,212 inpatients were discharged from non-federal general and specialty hospitals in New Mexico in 2011 and are described in Table 1.

- Approximately 60 percent were female and 40 percent were male;
- Five percent of people hospitalized were less than 15 years of age, 34 percent were 15-44 years of age, 26 percent were 45-64 years of age, and 35 percent were 65 and older;
- Among males, those less than 15 years of age had the longest average length of stay (5.6 days), and among females, those age 15 to 44 had the longest average length of stay (5.9 days);
- The highest discharge rate by region was 804.1 discharges per 10,000 population in the Northwest Region while the lowest rates were in the Metro (738.1 discharges per 10,000 population) and Northeast (738.3 discharges per 10,000 population) regions.
- The average length of stay ranged from 4.1 days in the Southeast Region to 5.2 days in the Southwest Region.

Table 1: Number, Rate and Average Length of Stay for Hospital Inpatient Discharges by Age, Region and Gender, New Mexico, 2011

Number of Discharges by Age Group	Total	Males	Females
All Ages	162,212	64,152	98,060
< 15	7,771	4,157	3,614
15-44	55,634	14,227	41,407
45-64	42,578	20,982	21,596
65+	56,229	24,786	31,443
Number of Discharges by All Regions	Total	Males	Females
Northwest	17,641	7,441	10,200
Northeast	23,688	10,049	13,639
Metro	67,413	25,829	41,584
Southeast	22,399	8,374	14,025
Southwest	30,921	12,411	18,510
Rates of Discharge by Age Group	Total	Males	Females
All Ages	755.1	605.5	908.2
< 15	183.4	192.7	173.8
15-44	688.8	347.3	1,040.3
45-64	771.6	783.6	760.3
65+	1,926.1	1,886.1	1,958.8
Rates of Discharge by Region	Total	Males	Females
All Regions	755.1	605.5	908.2
Northwest	804.1	711.2	903.9
Northeast	738.3	609.7	877.0
Metro	738.1	584.5	890.7
Southeast	771.2	577.3	973.4
Southwest	772.7	612.4	937.1
Average Length of Stay by Age Group	Total	Males	Females
All Ages	5.0	4.5	5.7
< 15	5.7	5.6	5.7
15-44	4.0	3.3	5.9
45-64	5.4	5.1	5.7
65+	5.5	5.5	5.6
Average Length of Stay by Region	Total	Males	Females
All Regions	5.0	4.5	5.7
Northwest	5.2	4.8	5.7
Northeast	4.5	4.1	5.0
Metro	5.1	4.7	6.1
Southeast	4.1	3.7	4.7
Southwest	5.2	4.6	6.0

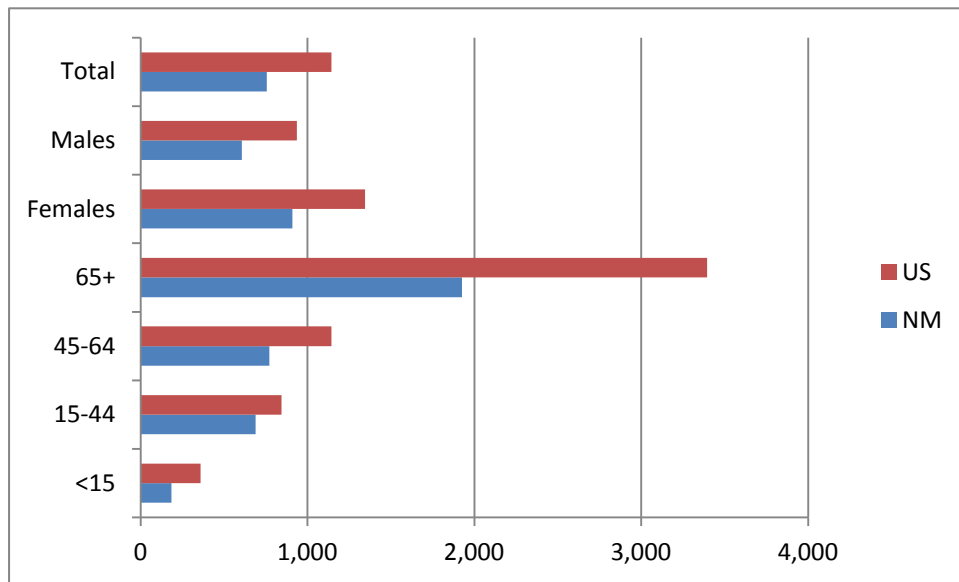
Notes: Except for age-specific rates, all rates are age-adjusted to the 2000 U.S. standard population. Rates are per 10,000 population. Average Length of Stay is measured in days.

Hospital Inpatient Discharge Rates by Age and Gender

As shown in Figure 2 below:

- The total hospital inpatient discharge rate per 10,000 population was 755.1 for New Mexico in 2011 and 1,143.9 for the U.S. in 2007;
- The discharge rate was lower for both males (605.5) and females (908.2) in New Mexico than males (936.7) and females (1,344.0) in the U.S; and
- The largest age-specific difference occurred among those 65 years and older. The New Mexico rate was 1,926.1 while the U.S. rate was 3,395.1.

Figure 2: Hospital Inpatient Discharge Rates by Age and Gender, New Mexico (2011) and United States (2007)



Rate per 10,000 Population

Note: Except for age-specific rates, all New Mexico rates are age-adjusted to the 2000 U.S. standard population.

Hospital Inpatient Discharges by Category of First-listed Diagnosis and Age

The top three reasons for hospitalization among all age groups in New Mexico in 2011 were Diseases of the Digestive System (18,957), Diseases of the Circulatory System (18,660), and Complications of Pregnancy, Childbirth and the Puerperium (17,789) (Table 2). The top three reasons for hospitalization by age group were as follows:

- For inpatients less than 15 years of age, Diseases of the Respiratory System (2,348), Mental Disorders (960), and Diseases of the Digestive System (885);
- For inpatients 15-44 years of age, Complications of Pregnancy, Childbirth and Puerperium (17,746), Supplementary Classifications (8,842), and Mental Disorders (6,301);
- For inpatients 45-64 years of age, Diseases of the Digestive System (6,355), Diseases of the Circulatory System (5,826) and Injury and Poisoning (4,079); and
- For inpatients 65 years and older, Diseases of the Circulatory System (11,363), Diseases of the Respiratory System (6,923), and Diseases of the Digestive System (6,272).

Table 2: Number of Hospital Inpatient Discharges by Category of First-listed Diagnosis and Age New Mexico, 2011

Category of First-listed Diagnosis	Diagnosis Codes (ICD-9-CM Codes)	NM Total	< 15 Years	15 - 44 Years	45 - 64 Years	65 + Years
Infectious and Parasitic Diseases	001-139	7,820	298	1,413	2,523	3,586
Neoplasms	140-239	6,130	83	887	2,589	2,571
Endocrine, Nutritional and Metabolic Diseases, and Immunity Disorders	240-279	5,745	404	1,515	1,774	2,052
Diseases of the Blood and Blood-Forming Organs	280-289	1,416	144	247	395	630
Mental Disorders	290-319	11,975	960	6,301	3,403	1,311
Diseases of the Nervous System and Sense Organs	320-389	3,274	396	854	922	1,102
Diseases of the Circulatory System	390-459	18,660	66	1,405	5,826	11,363
Diseases of the Respiratory System	460-519	14,475	2,348	1,522	3,682	6,923
Diseases of the Digestive System	520-579	18,957	885	5,445	6,355	6,272
Diseases of the Genitourinary System	580-629	8,660	252	2,244	2,423	3,741
Complications of Pregnancy, Childbirth, and Puerperium	630-677	17,789	29	17,746	14	0
Diseases of the Skin and Subcutaneous Tissue	680-709	3,678	302	1,118	1,258	1,000
Diseases of the Musculoskeletal System and Connective Tissue	710-739	9,373	125	1,069	3,840	4,339
Congenital Anomalies	740-759	425	186	84	98	57
Certain Conditions Originating in the Perinatal Period	760-779	2	2	0	0	0
Symptoms, Signs, and Ill-Defined Conditions	780-799	5,242	312	997	1,795	2,138
Injury and Poisoning	800-999	14,461	728	3,944	4,079	5,710
Supplementary Classifications	V01-V84	14,129	251	8,842	1,602	3,434

Hospital Inpatient Discharges by Category of First-listed Diagnosis and Gender

The top five reasons for hospitalization by category of first-listed diagnosis for males in New Mexico in 2011 were Diseases of the Circulatory System (9,792), Diseases of the Digestive System (8,905), Diseases of the Respiratory System (7,120), Injury and Poisoning (6,835), and Mental Disorders (6,121) (Table 3).

The top five reasons for hospitalization by category of first-listed diagnosis for females were Complications of Pregnancy, Childbirth and Puerperium (17,789), Supplementary Classifications (11,432), Diseases of the Digestive System (10,052), Diseases of the Circulatory System (8,868), and Injury and Poisoning (7,626).

Table 3: Number of Hospital Inpatient Discharges by Category of First-listed Diagnosis and Gender New Mexico, 2011

Category of First-listed Diagnosis	Diagnosis Codes (ICD-9-CM Codes)	NM Total	Males	Females
Infectious and Parasitic Diseases	001-139	7,820	3,732	4,088
Neoplasms	140-239	6,130	2,558	3,572
Endocrine, Nutritional and Metabolic Diseases, and Immunity Disorders	240-279	5,745	2,775	2,970
Diseases of the Blood and Blood-Forming Organs	280-289	1,416	581	835
Mental Disorders	290-319	11,975	6,121	5,854
Diseases of the Nervous System and Sense Organs	320-389	3,274	1,504	1,770
Diseases of the Circulatory System	390-459	18,660	9,792	8,868
Diseases of the Respiratory System	460-519	14,475	7,120	7,355
Diseases of the Digestive System	520-579	18,957	8,905	10,052
Diseases of the Genitourinary System	580-629	8,660	2,855	5,805
Complications of Pregnancy, Childbirth, and Puerperium	630-677	17,789	0	17,789
Diseases of the Skin and Subcutaneous Tissue	680-709	3,678	2,026	1,652
Diseases of the Musculoskeletal System and Connective Tissue	710-739	9,373	4,227	5,146
Congenital Anomalies	740-759	425	208	217
Certain Conditions Originating in the Perinatal Period	760-779	2	0	2
Symptoms, Signs, and Ill-Defined Conditions	780-799	5,242	2,216	3,026
Injury and Poisoning	800-999	14,461	6,835	7,626
Supplementary Classifications	V01-V84	14,129	2,697	11,432

Hospital Inpatient Discharges by Category of First-listed Diagnosis and Region

The top three reasons for hospitalization by category of first-listed diagnosis and region in New Mexico in 2011 (Table 4) were as follows:

- Northwest Region - Diseases of the Digestive System (2,035), Diseases of the Circulatory System (1,831), and Injury and Poisoning (1,798);
- Northeast Region – Diseases of the Digestive System (3,148), Diseases of the Circulatory System (1,831), and Injury and Poisoning (2,358);
- Metro Region – Complications of Childbirth and Pregnancy (8,199), Diseases of the Circulatory System (7,750), and Diseases of the Digestive System (7,745);
- Southeast Region – Complications of Childbirth and Pregnancy (2,566), Diseases of the Respiratory System (2,556), and Diseases of the Digestive System (2,537); and
- Southwest Region – Diseases of the Circulatory System (4,252), and Diseases of the Digestive System (3,470), and Complications of Childbirth and Pregnancy (3,176).

Table 4: Number of Hospital Inpatient Discharges by Category of First-listed Diagnosis and Region New Mexico, 2011

Category of First-listed Diagnosis	Diagnosis Codes (ICD-9-CM Codes)	NM Total	NW Region	NE Region	Metro Region	SE Region	SW Region
Infectious and Parasitic Diseases	001-139	6,651	877	1,135	3,391	1,163	1,248
Neoplasms	140-239	5,536	613	1,000	2,757	588	1,166
Endocrine, Nutritional and Metabolic Diseases, and Immunity Disorders	240-279	4,748	651	794	2,158	993	1,145
Diseases of the Blood and Blood-Forming Organs	280-289	1,204	156	195	545	209	308
Mental Disorders	290-319	9,696	1,408	1,382	3,995	2,267	2,911
Diseases of the Nervous System and Sense Organs	320-389	2,896	366	449	1,509	374	572
Diseases of the Circulatory System	390-459	16,450	1,831	2,617	7,750	2,196	4,252
Diseases of the Respiratory System	460-519	11,905	1,786	2,272	4,975	2,556	2,872
Diseases of the Digestive System	520-579	16,398	2,035	3,148	7,745	2,537	3,470
Diseases of the Genitourinary System	580-629	7,066	819	1,342	3,106	1,579	1,799
Complications of Pregnancy, Childbirth, and Puerperium	630-677	15,211	1,624	2,212	8,199	2,566	3,176
Diseases of the Skin and Subcutaneous Tissue	680-709	3,086	392	625	1,442	588	627
Diseases of the Musculoskeletal System and Connective Tissue	710-739	8,437	896	1,686	4,436	926	1,419
Congenital Anomalies	740-759	391	59	52	214	34	66
Certain Conditions Originating in the Perinatal Period	760-779	2	0	1	1	0	0
Symptoms, Signs, and Ill-Defined Conditions	780-799	4,528	784	867	1,950	708	927
Injury and Poisoning	800-999	12,875	1,798	2,358	6,410	1,575	2,309
Supplementary Classifications	V01-V84	12,578	1,545	1,553	6,830	1,541	2,650

NM and U.S. Hospital Inpatient Discharge Rates by Category of First-listed Diagnosis

Hospital inpatient discharge rates by category of first-listed diagnosis for New Mexico in 2011 and the U.S. in 2010 are provided in Table 5. Data highlights include the following:

- The first-listed diagnosis category with the highest rate in New Mexico was Complications of Pregnancy, Childbirth and Puerperium at 96.2 per 10,000 population while the U.S. rate for the same diagnosis was 15.9;
- The first-listed diagnosis category with the highest rate in the U.S. was Diseases of the Circulatory System at 188.5 while the New Mexico rate for the same diagnosis was 80.6;
- While most U.S. rates were higher than New Mexico rates, New Mexico's rate for Complications of Pregnancy, Childbirth and Puerperium (96.2) was higher than the U.S. rate (16.6) as was the New Mexico rate for Symptoms, Signs, and Ill-Defined Conditions (NM rate 23.5, US rate 6.3); and
- The largest difference between New Mexico and U.S. hospital discharge rates by category of first-listed diagnosis occurred for Complications of Pregnancy, Childbirth and Puerperium. As indicated above, the New Mexico rate was 96.2 while the U.S. rate was 15.9. The New Mexico rate was 6.1 times higher than the U.S. rate.

Table 5: Hospital Inpatient Discharge Rates per 10,000 Population by Category of First-listed Diagnosis New Mexico, 2011 and United States, 2010

Category of First-listed Diagnosis	Diagnosis Codes (ICD-9-CM Codes)	Rate per 10,000	
		NM Rate	U.S. Rate
Infectious and Parasitic Diseases	001-139	34.8	44.1
Neoplasms	140-239	26.8	51.9
Endocrine, Nutritional and Metabolic Diseases, and Immunity Disorders	240-279	26.3	57.9
Diseases of the Blood and Blood-Forming Organs	280-289	6.4	17.2
Mental Disorders	290-319	58.3	68.2
Diseases of the Nervous System and Sense Organs	320-389	15.1	32.8
Diseases of the Circulatory System	390-459	80.6	188.5
Diseases of the Respiratory System	460-519	64.9	111.9
Diseases of the Digestive System	520-579	86.7	112.8
Diseases of the Genitourinary System	580-629	39.4	70.2
Complications of Pregnancy, Childbirth, and Puerperium	630-677	96.2	15.9
Diseases of the Skin and Subcutaneous Tissue	680-709	17.0	24.2
Diseases of the Musculoskeletal System and Connective Tissue	710-739	40.7	74.7
Congenital Anomalies	740-759	2.0	5.7
Certain Conditions Originating in the Perinatal Period	760-779	0.0	*
Symptoms, Signs, and Ill-Defined Conditions	780-799	23.5	6.0
Injury and Poisoning	800-999	66.2	96.9
Supplementary Classifications	V01-V84	70.4	154.9

Note: New Mexico rates are age-adjusted to the 2000 U.S. standard population.

*Figure does not meet standards of reliability or precision

Hospital Inpatient Discharge Rates by Category of First-listed Diagnosis and Age

The highest discharge rates per 10,000 population by category of first-listed diagnosis and age group for New Mexico in 2011 (Table 6) were as follows:

- For inpatients less than 15 years of age, Diseases of the Respiratory System (55.4), Mental Disorders (22.7) and Diseases of the Digestive System (20.9);
- For inpatients 15-44 years of age, Complications of Pregnancy, Childbirth and Puerperium (219.7), Supplementary Classifications (109.5) and Mental Disorders (78.0);
- For inpatients 45-64 years of age, Diseases of the Digestive System (115.2), Diseases of the Circulatory System (105.6) and Injury and Poisoning (73.9); and
- For inpatients 65 years and older, Diseases of the Circulatory System (389.2), Diseases of the Respiratory System (237.1), and Diseases of the Digestive System (214.8).

Table 6: Hospital Inpatient Discharge Rates per 10,000 Population by Category of First-listed Diagnosis and Age New Mexico, 2011

Category of First-listed Diagnosis	Diagnosis Codes (ICD-9-CM Codes)	Rate per 10,000 Population				
		NM Rate	< 15 Years	15 - 44 Years	45 - 64 Years	65 + Years
Infectious and Parasitic Diseases	001-139	34.8	7.0	17.5	45.7	122.8
Neoplasms	140-239	26.8	2.0	11.0	46.9	88.1
Endocrine, Nutritional and Metabolic Diseases, and Immunity Disorders	240-279	26.3	9.5	18.8	32.1	70.3
Diseases of the Blood and Blood-Forming Organs	280-289	6.4	3.4	3.1	7.2	21.6
Mental Disorders	290-319	58.3	22.7	78.0	61.7	44.9
Diseases of the Nervous System and Sense Organs	320-389	15.1	9.3	10.6	16.7	37.7
Diseases of the Circulatory System	390-459	80.6	1.6	17.4	105.6	389.2
Diseases of the Respiratory System	460-519	64.9	55.4	18.8	66.7	237.1
Diseases of the Digestive System	520-579	86.7	20.9	67.4	115.2	214.8
Diseases of the Genitourinary System	580-629	39.4	5.9	27.8	43.9	128.1
Complications of Pregnancy, Childbirth, and Puerperium	630-677	96.2	0.7	219.7	0.3	0.0
Diseases of the Skin and Subcutaneous Tissue	680-709	17.0	7.1	13.8	22.8	34.3
Diseases of the Musculoskeletal System and Connective Tissue	710-739	40.7	3.0	13.2	69.6	148.6
Congenital Anomalies	740-759	2.0	4.4	1.0	1.8	2.0
Certain Conditions Originating in the Perinatal Period	760-779	0.0	0.0	0.0	0.0	0.0
Symptoms, Signs, and Ill-Defined Conditions	780-799	23.5	7.4	12.3	32.5	73.2
Injury and Poisoning	800-999	66.2	17.2	48.8	73.9	195.6
Supplementary Classifications	V01-V84	70.4	5.9	109.5	29.0	117.6

Note: New Mexico rates are age-adjusted to the 2000 U.S. standard population. Rates by age group are crude rates.

Hospital Inpatient Discharge Rates by Category of First-listed Diagnosis and Gender

The top five discharge rates by category of first-listed diagnosis for males in New Mexico in 2011 were attributable to Diseases of the Circulatory system (90.5), Diseases of the Digestive System (84.3), Diseases of the Respiratory System (67.6), Injury and Poisoning (65.6), and Mental Disorders (60.2) (Table 7).

The top five discharge rates by category of first-listed diagnosis for females were attributable to Complications of Pregnancy, Childbirth and Puerperium (195.2), Supplementary Classifications (116.6), Diseases of the Digestive System (89.0), Diseases of the Circulatory System (71.6), and Injury and Poisoning (65.9).

Table 7: Hospital Inpatient Discharge Rates per 10,000 Population by Category of First-listed Diagnosis and Gender New Mexico, 2011

Category of First-listed Diagnosis	Diagnosis Codes (ICD-9-CM Codes)	Rates per 10,000 Population		
		NM Rate	Male	Female
Infectious and Parasitic Diseases	001-139	34.8	34.8	34.9
Neoplasms	140-239	26.8	30.2	23.5
Endocrine, Nutritional and Metabolic Diseases, and Immunity Disorders	240-279	26.3	26.1	26.3
Diseases of the Blood and Blood-Forming Organs	280-289	6.4	7.2	5.5
Mental Disorders	290-319	58.3	56.3	60.2
Diseases of the Nervous System and Sense Organs	320-389	15.1	15.8	14.4
Diseases of the Circulatory System	390-459	80.6	71.6	90.5
Diseases of the Respiratory System	460-519	64.9	62.6	67.6
Diseases of the Digestive System	520-579	86.7	89.0	84.3
Diseases of the Genitourinary System	580-629	39.4	52.0	26.8
Complications of Pregnancy, Childbirth, and Puerperium	630-677	96.2	195.2	0.0
Diseases of the Skin and Subcutaneous Tissue	680-709	17.0	14.7	19.3
Diseases of the Musculoskeletal System and Connective Tissue	710-739	40.7	42.1	38.9
Congenital Anomalies	740-759	2.0	2.1	1.8
Certain Conditions Originating in the Perinatal Period	760-779	0.0	0.0	0.0
Symptoms, Signs, and Ill-Defined Conditions	780-799	23.5	26.0	21.2
Injury and Poisoning	800-999	66.2	65.9	65.6
Supplementary Classifications	V01-V84	70.4	116.6	25.3

Note: Rates are age-adjusted to the 2000 U.S. standard population.

Hospital Inpatient Discharge Rates by Category of First-listed Diagnosis and Region

Hospital inpatient discharge rates per 10,000 population by category of first-listed diagnosis and region for New Mexico in 2011 are listed in Table 8. Among all five regions:

- The Northwest Region had the highest rate for Injury and Poisoning (81.9) followed by the Northeast Region (71.8), Southeast Region (54.5), Metro Region (48.4), and Southwest Region (22.0);
- The Northeast Region had the highest rate for Complications due to Pregnancy, Childbirth and Pueriperium (130.7), followed by the Southeast Region (116.5), Metro Region (100.5), Southwest Region (98.2), and Northwest Region (76.5);
- The Southeast Region had the highest rate for Diseases of the Respiratory System (83.4) followed by the Northwest Region (80.4), Northeast and Southwest Regions (66.5), and Metro Region (53.8); and
- The Southwest Region had the highest rate for Diseases of the Circulatory System (94.2) followed by the Northwest Region (85.0), Metro Region (80.9), Northeast Region (69.6), and Southeast Region (39.2).

Table 8: Hospital Inpatient Discharge Rates per 10,000 Population by Category of First-listed Diagnosis and Region New Mexico, 2011

Category of First-listed Diagnosis	Diagnosis Codes (ICD-9-CM Codes)	Rates per 10,000 Population					
		NM Rate	NW Region	NE Region	Metro Region	SE Region	SW Region
Infectious and Parasitic Diseases	001-139	34.8	40.1	32.3	35.9	38.4	29.1
Neoplasms	140-239	26.8	27.8	27.3	27.9	23.4	27.2
Endocrine, Nutritional and Metabolic Diseases, and Immunity Disorders	240-279	26.3	29.2	23.8	23.3	33.7	27.8
Diseases of the Blood and Blood-Forming Organs	280-289	6.4	7.1	5.7	5.9	6.9	7.2
Mental Disorders	290-319	58.3	63.3	80.1	39.2	80.8	80.2
Diseases of the Nervous System and Sense Organs	320-389	15.1	16.4	13.6	16.5	51.6	76.2
Diseases of the Circulatory System	390-459	80.6	85.0	69.6	80.9	39.2	94.2
Diseases of the Respiratory System	460-519	64.9	80.4	66.5	53.8	83.4	66.5
Diseases of the Digestive System	520-579	86.7	91.9	90.8	83.5	86.0	85.3
Diseases of the Genitourinary System	580-629	39.4	37.5	40.8	33.4	53.7	33.1
Complications of Pregnancy, Childbirth, and Puerperium	630-677	96.2	76.5	130.7	100.5	116.5	98.2
Diseases of the Skin and Subcutaneous Tissue	680-709	17.0	17.6	9.3	15.6	20.0	15.7
Diseases of the Musculoskeletal System and Connective Tissue	710-739	40.7	40.5	45.1	46.1	30.1	32.6
Congenital Anomalies	740-759	2.0	2.5	1.8	2.1	1.1	1.8
Certain Conditions Originating in the Perinatal Period	760-779	0.0	0.0	0.0	0.0	0.2	0.0
Symptoms, Signs, and Ill-Defined Conditions	780-799	23.5	35.1	25.3	20.8	23.3	22.9
Injury and Poisoning	800-999	66.2	81.9	71.8	48.4	54.5	22.0
Supplementary Classifications	V01-V84	70.4	71.6	56.0	78.0	58.2	57.6

Note: Rates are age-adjusted to the 2000 U.S. standard population.

Appendix



Appendix Table 1: Number of Discharges by First-listed Diagnosis and Age, New Mexico, 2011 - Expanded Listing

Category of First Listed Diagnosis	Diagnosis Codes (ICD-9-CM Codes)	NM Total	<15 years	15-44 years	45-64 years	65+ years
Infectious and Parasitic Diseases	000-139	7820	298	1413	2523	3586
Septicemia	38	274	7	48	98	121
Neoplasms	140-239	6130	83	887	2589	2571
Malignant Neoplasms	140 - 208, 230 - 234	4503	50	389	1853	2211
Malignant Neoplasms of Large Intestine and Rectum	153 - 154, 197.5	666	0	34	258	374
Malignant Neoplasms of Trachea, Bronchi and Lung	162, 176.4, 197.0, 197.3	74	0	8	38	28
Benign Neoplasms	210 - 229	1352	21	462	655	214
Benign Neoplasms of Uterus	218 - 219	738	0	325	403	10
Endocrine, Nutritional and Metabolic Diseases, and Immunity Disorders	240-279	5745	404	1515	1774	2052
Diabetes Mellitus	250	46	9	13	12	12
Volume Depletion	276.5	22	0	5	4	13
Diseases of the Blood and Blood-Forming Organs	280-289	1416	144	247	395	630
Anemias	280-285	840	30	124	228	458
Mental Disorders	290-319	11975	960	6301	3403	1311
Psychoes	290-299	9526	668	4941	2785	1132
Schizophrenic Disorders	295	0	0	0	0	0
Major Depressive Disorder	296.2, 296.3	698	37	329	244	88
Diseases of the Nervous System and Sense Organs	320-389	3274	396	854	922	1102
Diseases of the Circulatory System	390-459	18660	66	1405	5826	11363
Essential Hypertension	401	94	0	16	44	34
Heart Disease	391 - 392.0, 393 - 398, 402,410-416, 420-429	11630	21	741	3650	7218
Acute Myocardial Infarction	410	0	0	0	0	0
Coronary Atherosclerosis	414	122	0	1	46	75
Other Ischemic Heart Disease	411 - 413, 414.1 - 414.9	148	0	6	54	88
Cardiac Dysrhythmias	427	81	2	15	24	40
Congestive Heart Failure	428.0, 428.2 - 428.4	2750	2	100	585	1883
Cerebrovascular Disease	430 - 438	3498	7	191	962	2338
Diseases of the Respiratory System	460-519	14475	2348	1522	3682	6923
Acute Bronchitis and Bronchiolitis	466	278	18	53	62	145
Pneumonia	480-486	5238	630	532	1313	2763
Chronic Bronchitis	491	0	0	0	0	0
Asthma	493	6	2	1	2	1
Diseases of the Digestive System	520-579	18957	885	5445	6355	6272
Appendicitis	540-543	1761	490	760	371	140
Non-Infectious Enteritis and Colitis	555-558	590	7	190	163	230
Intestinal Obstruction	560	27	18	4	3	2
Diverticula of Intestine	562	10	0	2	2	6
Cholelithiasis	574	1053	5	470	342	236
Acute Pancreatitis	577	1610	24	671	560	355
Diseases of the Genitourinary System	580-629	8660	252	2244	2423	3741
Calculus of Kidney and Ureter	592	206	1	80	90	35
Urinary Tract Infection	599	1814	63	128	302	1321
Complications of Pregnancy, Childbirth, and Puerperium	630-677	17789	29	17746	14	0
Diseases of the Skin and Subcutaneous Tissue	680-709	3678	302	1118	1258	1000
Cellulitis and Abscess	681-682	387	51	161	114	61
Diseases of the Musculoskeletal System and Connective Tissue	710-739	9373	125	1069	3840	4339
Osteoarthritis and Allied Disorders	715	0	0	0	0	0
Intervertebral Disc Disorders	722	104	0	34	61	9
Congenital Anomalies	740-759	425	186	84	98	57
Certain Conditions Originating in the Perinatal Period	760-779	2	2	0	0	0
Symptoms, Signs, and Ill-Defined Conditions	780-799	5242	312	997	1795	2138
Injury and Poisoning	800-999	14461	728	3944	4079	5710
Fractures, All sites	800-829	5526	268	1036	1147	3075
Fracture of Neck of Femur	820	7	0	0	0	7
Poisonings	960-989	1916	77	1004	615	220
Certain Complications of Surgical and Medical Care	996-999	4046	126	838	1545	1537
Supplementary Classifications	V01-V84	14129	251	8842	1602	3434
Females with Deliveries	V27	8175	17	8140	18	0

Appendix Table 2: Number of Discharges by First-listed Diagnosis and Gender, New Mexico, 2011 - Expanded Listing

Category of First Listed Diagnosis	Diagnosis Codes (ICD-9-CM Codes)	NM Total	Males	Females
Infectious and Parasitic Diseases	000-139	7820	3732	4088
Septicemia	38	274	149	125
Neoplasms	140-239	6130	2558	3572
Malignant Neoplasms	140 - 208, 230 - 234	4503	2219	2284
Malignant Neoplasms of Large Intestine and Rectum	153 - 154, 197.5	666	339	327
Malignant Neoplasms of Trachea, Bronchi and Lung	162, 176.4, 197.0, 197.3	74	32	42
Benign Neoplasms	210 - 229	1352	210	1142
Benign Neoplasms of Uterus	218 - 219	738	0	738
Endocrine, Nutritional and Metabolic Diseases, and Immunity Disorders	240-279	5745	2775	2970
Diabetes Mellitus	250	46	18	28
Volume Depletion	276.5	22	12	10
Diseases of the Blood and Blood-Forming Organs	280-289	1416	581	835
Anemias	280-285	840	330	510
Mental Disorders	290-319	11975	6121	5854
Psychoes	290-299	9526	4849	4677
Schizophrenic Disorders	295	0	0	0
Major Depressive Disorder	296.2, 296.3	698	251	447
Diseases of the Nervous System and Sense Organs	320-389	3274	1504	1770
Diseases of the Circulatory System	390-459	18660	9792	8868
Essential Hypertension	401	94	43	51
Heart Disease	391 - 392.0, 393 - 398, 402,410-416, 420-429	11630	6453	5177
Acute Myocardial Infarction	410	0	0	0
Coronary Atherosclerosis	414	122	78	44
Other Ischemic Heart Disease	411 - 413, 414.1 - 414.9	148	69	79
Cardiac Dysrhythmias	427	81	32	49
Congestive Heart Failure	428.0, 428.2 - 428.4	2570	1305	1265
Cerebrovascular Disease	430 - 438	3498	1562	1936
Diseases of the Respiratory System	460-519	14475	7120	7355
Acute Bronchitis and Bronchiolitis	466	278	109	169
Pneumonia	480-486	5238	2565	2673
Chronic Bronchitis	491	0	0	0
Asthma	493	6	2	4
Diseases of the Digestive System	520-579	18957	8905	10052
Appendicitis	540-543	1761	944	817
Non-Infectious Enteritis and Colitis	555-558	590	234	356
Intestinal Obstruction	560	27	14	13
Diverticula of Intestine	562	10	5	5
Cholelithiasis	574	1053	394	659
Acute Pancreatitis	577	1610	818	792
Diseases of the Genitourinary System	580-629	8660	2855	5805
Calculus of Kidney and Ureter	592	206	82	124
Urinary Tract Infection	599	1814	553	1261
Complications of Pregnancy, Childbirth, and Puerperium	630-677	17789	0	17789
Diseases of the Skin and Subcutaneous Tissue	680-709	3678	2026	1652
Cellulitis and Abscess	681-682	387	215	172
Diseases of the Musculoskeletal System and Connective Tissue	710-739	9373	4227	5146
Osteoarthritis and Allied Disorders	715	0	0	0
Intervertebral Disc Disorders	722	104	51	53
Congenital Anomalies	740-759	425	208	217
Certain Conditions Originating in the Perinatal Period	760-779	2	0	2
Symptoms, Signs, and Ill-Defined Conditions	780-799	5242	2216	3026
Injury and Poisoning	800-999	14461	6835	7626
Fractures, All sites	800-829	5526	2307	3219
Fracture of Neck of Femur	820	7	2	5
Poisonings	960-989	1916	852	1064
Certain Complications of Surgical and Medical Care	996-999	4046	1890	2156
Supplementary Classifications	V01-V84	14129	2697	11432
Females with Deliveries	V27	8175	0	8175

Appendix Table 3: Number of Discharges by First-listed Diagnosis and Region, New Mexico, 2011 - Expanded Listing

Category of First Listed Diagnosis	Diagnosis Codes (ICD-9-CM Codes)	NM Total	NW Region	NE Region	Metro	SE Region	SW Region
Infectious and Parasitic Diseases	000-139	7820	877	1135	3391	1163	1248
Septicemia	38	274	40	43	125	27	39
Neoplasms	140-239	6130	613	1000	2757	588	1166
Malignant Neoplasms	140 - 208, 230 - 234	4503	463	725	2057	388	866
Malignant Neoplasms of Large Intestine and Rectum	153 - 154, 197.5	666	68	111	298	54	134
Malignant Neoplasms of Trachea, Bronchi and Lung	162, 176.4, 197.0, 197.3	74	6	12	33	11	12
Benign Neoplasms	210 - 229	1352	127	225	579	175	244
Benign Neoplasms of Uterus	218 - 219	738	60	144	289	117	126
Endocrine, Nutritional and Metabolic Diseases, and Immunity Disorders	240-279	5745	651	794	2158	993	1145
Diabetes Mellitus	250	46	5	6	23	9	3
Volume Depletion	276.5	22	9	4	2	6	1
Diseases of the Blood and Blood-Forming Organs	280-289	1416	156	195	545	209	308
Anemias	280-285	840	86	126	289	139	198
Mental Disorders	290-319	11975	1408	1382	3995	2267	2911
Psychoes	290-299	9526	998	980	3219	1962	2358
Schizophrenic Disorders	295	0	0	0	0	0	0
Major Depressive Disorder	296.2, 296.3	698	60	156	162	45	275
Diseases of the Nervous System and Sense Organs	320-389	3274	366	449	1509	374	572
Diseases of the Circulatory System	390-459	18660	1831	2617	7750	2196	4252
Essential Hypertension	401	94	9	12	26	21	26
Heart Disease	391 - 392.0, 393 - 398, 402,410-416, 420-429	11630	1169	1592	4668	1397	2797
Acute Myocardial Infarction	410	0	0	0	0	0	0
Coronary Atherosclerosis	414	122	22	7	32	26	35
Other Ischemic Heart Disease	411 - 413, 414.1 - 414.9	148	25	14	42	27	40
Cardiac Dysrhythmias	427	81	8	14	39	9	11
Congestive Heart Failure	428.0, 428.2 - 428.4	2750	255	361	990	460	503
Cerebrovascular Disease	430 - 438	3498	318	520	1596	394	668
Diseases of the Respiratory System	460-519	14475	1786	2272	4975	2556	2872
Acute Bronchitis and Bronchiolitis	466	278	38	46	62	76	56
Pneumonia	480-486	5238	643	870	1681	957	1082
Chronic Bronchitis	491	0	0	0	0	0	0
Asthma	493	6	0	1	4	1	0
Diseases of the Digestive System	520-579	18957	2035	3148	7745	2537	3470
Appendicitis	540-543	1761	213	219	748	239	340
Non-Infectious Enteritis and Colitis	555-558	590	40	60	292	47	151
Intestinal Obstruction	560	27	5	0	16	2	4
Diverticula of Intestine	562	10	0	4	3	1	2
Cholelithiasis	574	1053	107	125	533	122	166
Acute Pancreatitis	577	1610	180	267	619	280	263
Diseases of the Genitourinary System	580-629	8660	819	1342	3106	1579	1799
Calculus of Kidney and Ureter	592	206	31	28	78	32	37
Urinary Tract Infection	599	1814	185	286	594	354	391
Complications of Pregnancy, Childbirth, and Puerperium	630-677	17789	1624	2212	8199	2566	3176
Diseases of the Skin and Subcutaneous Tissue	680-709	3678	392	625	1442	588	627
Cellulitis and Abscess	681-682	387	51	71	135	68	62
Diseases of the Musculoskeletal System and Connective Tissue	710-739	9373	896	1686	4436	926	1419
Osteoarthritis and Allied Disorders	715	0	0	0	0	0	0
Intervertebral Disc Disorders	722	104	13	34	26	7	24
Congenital Anomalies	740-759	425	59	52	214	34	66
Certain Conditions Originating in the Perinatal Period	760-779	2	0	1	1	0	0
Symptoms, Signs, and Ill-Defined Conditions	780-799	5242	784	867	1950	708	927
Injury and Poisoning	800-999	14461	1798	2358	6410	1575	2309
Fractures, All sites	800-829	5526	615	921	2495	604	888
Fracture of Neck of Femur	820	7	0	1	0	0	6
Poisonings	960-989	1916	200	336	804	258	316
Certain Complications of Surgical and Medical Care	996-999	4046	461	598	1803	431	749
Supplementary Classifications	V01-V84	14129	1545	1553	6830	1541	2650
Females with Deliveries	V27	8175	885	837	3607	1210	1630

Appendix Table 4: Rate of Discharges by First-listed Diagnosis, New Mexico (2011) and U.S (2010) - Expanded Listing

Category of First Listed Diagnosis	Diagnosis Codes (ICD-9-CM Codes)	Rate per 10,000 Population	
		NM Rate	US Rate
Infectious and Parasitic Diseases	000-139	34.8	44.1
Septicemia	38	1.2	26.3
Neoplasms	140-239	26.8	51.9
Malignant Neoplasms	140 - 208, 230 - 234	19.4	40.8
Malignant Neoplasms of Large Intestine and Rectum	153 - 154, 197.5	2.8	4.4
Malignant Neoplasms of Trachea, Bronchi and Lung	162, 176.4, 197.0, 197.3	0.3	5.8
Benign Neoplasms	210 - 229	6.2	10.9
Benign Neoplasms of Uterus	218 - 219	3.4	6.1
Endocrine, Nutritional and Metabolic Diseases, and Immunity Disorders	240-279	26.3	57.9
Diabetes Mellitus	250	0.2	20.6
Volume Depletion	276.5	0.1	9.4
Diseases of the Blood and Blood-Forming Organs	280-289	6.4	17.2
Anemias	280-285	3.7	12.7
Mental Disorders	290-319	58.3	68.2
Psychoes	290-299	46.2	50.1
Schizophrenic Disorders	295	0.0	8.6
Major Depressive Disorder	296.2, 296.3	3.3	12.8
Diseases of the Nervous System and Sense Organs	320-389	15.1	32.8
Diseases of the Circulatory System	390-459	80.6	188.5
Essential Hypertension	401	0.4	9.1
Heart Disease	391 - 392.0, 393 - 398, 402,410-416, 420-429	50.1	121.0
Acute Myocardial Infarction	410	0.0	19.3
Coronary Atherosclerosis	414	0.5	21.1
Other Ischemic Heart Disease	411 - 413, 414.1 - 414.9	0.6	3.3
Cardiac Dysrhythmias	427	0.4	24.9
Congestive Heart Failure	428.0, 428.2 - 428.4	11.1	32.8
Cerebrovascular Disease	430 - 438	15.1	33.0
Diseases of the Respiratory System	460-519	64.9	111.9
Acute Bronchitis and Bronchiolitis	466	1.3	5.6
Pneumonia	480-486	23.3	36.6
Chronic Bronchitis	491	0.0	19.9
Asthma	493	0.0	14.3
Diseases of the Digestive System	520-579	86.7	112.8
Appendicitis	540-543	8.7	8.9
Non-Infectious Enteritis and Colitis	555-558	2.7	10.4
Intestinal Obstruction	560	0.1	12.5
Diverticula of Intestine	562	0.0	9.7
Cholelithiasis	574	5.0	10.9
Acute Pancreatitis	577	7.5	9.0
Diseases of the Genitourinary System	580-629	39.4	70.2
Calculus of Kidney and Ureter	592	1.0	5.1
Urinary Tract Infection	599	7.9	18.1
Complications of Pregnancy, Childbirth, and Puerperium	630-677	96.2	15.9
Diseases of the Skin and Subcutaneous Tissue	680-709	17.0	24.2
Cellulitis and Abscess	681-682	1.9	19.6
Diseases of the Musculoskeletal System and Connective Tissue	710-739	40.7	74.7
Osteoarthritis and Allied Disorders	715	0.0	34.3
Intervertebral Disc Disorders	722	0.5	10.3
Congenital Anomalies	740-759	2.0	5.7
Certain Conditions Originating in the Perinatal Period	760-779	0.0	*
Symptoms, Signs, and Ill-Defined Conditions	780-799	23.5	6.0
Injury and Poisoning	800-999	66.2	96.9
Fractures, All sites	800-829	24.9	36.2
Fracture of Neck of Femur	820	0.0	9.9
Poisonings	960-989	9.3	8.4
Certain Complications of Surgical and Medical Care	996-999	18.0	33.0
Supplementary Classifications	V01-V84	70.4	154.9
Females with Deliveries	V27	44.2	128.4

Diagnosis Code Note: New Mexico rates are age-adjusted to the 2000 U.S. standard population. Rates by age group are crude rates.

*Figure does not meet standards of reliability or precision

Appendix Table 5: Rate of Discharges by First-listed Diagnosis and Age, New Mexico, 2011 - Expanded Listing

Category of First Listed Diagnosis	Diagnosis Codes (ICD-9-CM Codes)	Rate per 10,000 Population				
		NM Rate	< 15 years	15-44 years	45-64 years	65 + years
Infectious and Parasitic Diseases	000-139	34.8	7.0	17.5	45.7	122.8
Septicemia	38	1.2	0.2	0.6	1.8	4.1
Neoplasms	140-239	26.8	1.96	11.0	46.9	88.1
Malignant Neoplasms	140 - 208, 230 - 234	19.4	1.2	4.8	33.6	75.7
Malignant Neoplasms of Large Intestine and Rectum	153 - 154, 197.5	2.8	0.00	0.4	4.7	12.8
Malignant Neoplasms of Trachea, Bronchi and Lung	162, 176.4, 197.0, 197.3	0.3	0.0	0.1	0.7	1.0
Benign Neoplasms	210 - 229	6.2	0.5	5.7	11.9	7.3
Benign Neoplasms of Uterus	218 - 219	3.4	0.0	4.0	7.3	0.3
Endocrine, Nutritional and Metabolic Diseases, and Immunity Disorders	240-279	26.3	9.5	18.8	32.2	70.3
Diabetes Mellitus	250	0.2	0.2	0.2	0.2	0.4
Volume Depletion	276.5	0.1	0.0	0.1	0.1	0.5
Diseases of the Blood and Blood-Forming Organs	280-289	6.4	3.4	3.1	7.2	21.6
Anemias	280-285	3.7	0.7	1.5	4.1	15.7
Mental Disorders	290-319	58.3	22.7	78.0	61.7	44.9
Psychoes	290-299	46.2	15.8	61.2	50.5	38.8
Schizophrenic Disorders	295	0.0	0.0	0.0	0.0	0.0
Major Depressive Disorder	296.2, 296.3	3.3	0.9	4.1	4.4	3.0
Diseases of the Nervous System and Sense Organs	320-389	15.1	9.4	10.6	16.7	37.8
Diseases of the Circulatory System	390-459	80.6	1.6	17.4	105.6	389.2
Essential Hypertension	401	0.4	0.0	0.2	0.8	1.2
Heart Disease	391 - 392.0, 393 - 398, 402,410-416, 420-429	50.1	0.5	9.2	66.2	247.3
Acute Myocardial Infarction	410	0.0	0.0	0.0	0.0	0.0
Coronary Atherosclerosis	414	0.5	0.0	0.0	0.8	2.6
Other Ischemic Heart Disease	411 - 413, 414.1 - 414.9	0.6	0.0	0.1	1.0	3.0
Cardiac Dysrhythmias	427	0.4	0.04	0.2	0.4	1.4
Congestive Heart Failure	428.0, 428.2 - 428.4	11.1	0.05	1.2	10.6	64.5
Cerebrovascular Disease	430 - 438	15.1	0.2	2.4	17.4	80.1
Diseases of the Respiratory System	460-519	64.9	55.4	18.8	66.7	237.2
Acute Bronchitis and Bronchiolitis	466	1.3	0.4	0.7	1.1	5.0
Pneumonia	480-486	23.3	14.9	6.6	23.8	94.7
Chronic Bronchitis	491	0.0	0.0	0.0	0.0	0.0
Asthma	493	0.0	0.1	0.0	0.0	0.0
Diseases of the Digestive System	520-579	86.7	20.9	67.4	115.2	214.9
Appendicitis	540-543	8.7	11.6	9.4	6.7	4.8
Non-Infectious Enteritis and Colitis	555-558	2.7	0.2	2.4	3.0	7.9
Intestinal Obstruction	560	0.1	0.4	0.05	0.05	0.07
Diverticula of Intestine	562	0.0	0.0	0.0	0.0	0.2
Cholelithiasis	574	5.0	0.1	5.8	6.2	8.1
Acute Pancreatitis	577	7.5	0.6	8.3	10.1	12.2
Diseases of the Genitourinary System	580-629	39.4	6.0	27.8	43.9	128.2
Calculus of Kidney and Ureter	592	1.0	0.02	1.0	1.6	1.2
Urinary Tract Infection	599	7.9	1.5	1.6	5.5	45.2
Complications of Pregnancy, Childbirth, and Puerperium	630-677	96.2	0.7	219.7	0.3	0.0
Diseases of the Skin and Subcutaneous Tissue	680-709	17.0	7.1	13.8	22.8	34.3
Cellulitis and Abscess	681-682	1.	1.2	2.0	2.1	2.1
Diseases of the Musculoskeletal System and Connective Tissue	710-739	40.7	3.0	13.2	69.6	148.6
Osteoarthritis and Allied Disorders	715	0.0	0.0	0.0	0.0	0.0
Intervertebral Disc Disorders	722	0.5	0.0	0.5	1.1	0.3
Congenital Anomalies	740-759	2.0	4.4	1.0	1.8	2.0
Certain Conditions Originating in the Perinatal Period	760-779	0.0	0.1	0.0	0.0	0.0
Symptoms, Signs, and Ill-Defined Conditions	780-799	23.5	7.4	12.3	32.5	73.2
Injury and Poisoning	800-999	66.2	17.2	48.8	73.9	195.6
Fractures, All sites	800-829	24.9	6.3	12.8	20.8	105.3
Fracture of Neck of Femur	820	0.0	0.0	0.0	0.0	0.2
Poisonings	960-989	9.3	1.8	12.4	11.2	7.5
Certain Complications of Surgical and Medical Care	996-999	18.0	3.0	10.4	28.0	52.7
Supplementary Classifications	V01-V84	70.4	5.9	109.5	29.0	117.6
Females with Deliveries	V27	44.2	0.4	100.8	0.3	0.0

Note: New Mexico rates are age-adjusted to the 2000 U.S. standard population. Rates by age group are crude rates.

Appendix Table 6: Rate of discharges by First-listed Diagnosis and Gender, New Mexico, 2011 - Expanded Listing

Category of First Listed Diagnosis	Diagnosis Codes (ICD-9-CM Codes)	Rate per 10,000 population		
		NM Rate	Males	Females
Infectious and Parasitic Diseases	000-139	34.8	34.8	34.9
Septicemia	38	1.2	1.4	1.1
Neoplasms	140-239	26.8	30.2	23.5
Malignant Neoplasms	140 - 208, 230 - 234	19.4	20.6	18.7
Malignant Neoplasms of Large Intestine and Rectum	153 - 154, 197.5	2.8	3.1	2.6
Malignant Neoplasms of Trachea, Bronchi and Lung	162, 176.4, 197.0, 197.3	0.3	0.4	0.3
Benign Neoplasms	210 - 229	6.2	1.9	9.3
Benign Neoplasms of Uterus	218 - 219	3.4	0.0	6.8
Endocrine, Nutritional and Metabolic Diseases, and Immunity Disorders	240-279	26.3	26.2	26.3
Diabetes Mellitus	250	0.2	0.2	0.3
Volume Depletion	276.5	0.1	0.1	0.1
Diseases of the Blood and Blood-Forming Organs	280-289	6.4	7.2	5.5
Anemias	280-285	3.7	3.1	4.3
Mental Disorders	290-319	58.3	56.3	60.3
Psychoes	290-299	46.2	47.7	44.6
Schizophrenic Disorders	295	0.0	0.0	0.0
Major Depressive Disorder	296.2, 296.3	3.3	2.4	4.2
Diseases of the Nervous System and Sense Organs	320-389	15.1	15.9	14.4
Diseases of the Circulatory System	390-459	80.6	71.6	90.5
Essential Hypertension	401	0.4	5.5	0.4
Heart Disease	391 - 392.0, 393 - 398, 402,410-416, 420-429	50.1	59.5	41.5
Acute Myocardial Infarction	410	0.0	0.0	0.0
Coronary Atherosclerosis	414	0.5	0.7	0.4
Other Ischemic Heart Disease	411 - 413, 414.1 - 414.9	0.6	0.6	0.6
Cardiac Dysrhythmias	427	0.4	0.3	0.4
Congestive Heart Failure	428.0, 428.2 - 428.4	11.1	12.2	10.0
Cerebrovascular Disease	430 - 438	15.1	14.5	15.6
Diseases of the Respiratory System	460-519	64.9	62.7	67.6
Acute Bronchitis and Bronchiolitis	466	1.3	1.2	1.4
Pneumonia	480-486	23.3	24.2	22.6
Chronic Bronchitis	491	0.0	0.0	0.0
Asthma	493	0.0	0.0	0.0
Diseases of the Digestive System	520-579	86.7	89.0	84.3
Appendicitis	540-543	8.7	9.4	8.0
Non-Infectious Enteritis and Colitis	555-558	2.7	2.3	3.1
Intestinal Obstruction	560	0.1	0.1	0.1
Diverticula of Intestine	562	0.0	0.0	0.0
Cholelithiasis	574	5.0	2.9	6.3
Acute Pancreatitis	577	7.5	7.8	7.3
Diseases of the Genitourinary System	580-629	39.4	52.0	26.8
Calculus of Kidney and Ureter	592	1.0	0.8	1.2
Urinary Tract Infection	599	7.9	5.2	10.3
Complications of Pregnancy, Childbirth, and Puerperium	630-677	96.2	195.2	0.0
Diseases of the Skin and Subcutaneous Tissue	680-709	17.0	14.7	19.3
Cellulitis and Abscess	681-682	1.9	2.1	1.6
Diseases of the Musculoskeletal System and Connective Tissue	710-739	40.65	42.05	38.89
Osteoarthritis and Allied Disorders	715	0.0	0.0	0.0
Intervertebral Disc Disorders	722	0.5	0.5	0.5
Congenital Anomalies	740-759	2.0	2.1	1.8
Certain Conditions Originating in the Perinatal Period	760-779	0.0	0.0	0.0
Symptoms, Signs, and Ill-Defined Conditions	780-799	23.5	26.0	21.2
Injury and Poisoning	800-999	66.2	65.8	65.6
Fractures, All sites	800-829	24.9	22.2	26.6
Fracture of Neck of Femur	820	0.0	0.0	0.0
Poisonings	960-989	9.3	8.3	10.2
Certain Complications of Surgical and Medical Care	996-999	18.0	17.6	18.6
Supplementary Classifications	V01-V84	70.4	116.6	25.3
Females with Deliveries	V27	44.2	0.0	89.7

Note: Rates are age-adjusted to the 2000 U.S. standard population.

Appendix Table 7: Average Length of Stay by First-listed Diagnosis and Age, New Mexico, 2011 - Expanded Listing

Category of First Listed Diagnosis	Diagnosis Codes (ICD-9-CM Codes)	<15 years	15-44 years	45-64 years	65+ years
Infectious and Parasitic Diseases	000-139	4.5	7.0	8.1	6.6
Septicemia	38	19.0	9.8	13.0	9.8
Neoplasms	140-239	13.6	5.1	5.3	6.1
Malignant Neoplasms	140 - 208, 230 - 234	12.2	7.6	6.1	6.3
Malignant Neoplasms of Large Intestine and Rectum	153 - 154, 197.5	0.0	8.8	7.6	8.3
Malignant Neoplasms of Trachea, Bronchi and Lung	162, 176.4, 197.0, 197.3	0.0	5.3	7.7	6.0
Benign Neoplasms	210 - 229	5.6	0.00	3.0	5.4
Benign Neoplasms of Uterus	218 - 219	0.0	2.1	2.0	2.9
Endocrine, Nutritional and Metabolic Diseases, and Immunity Disorders	240-279	3.1	3.7	4.8	4.2
Diabetes Mellitus	250	3.1	1.9	2.4	2.3
Volume Depletion	276.5	0.0	1.8	2.0	2.1
Diseases of the Blood and Blood-Forming Organs	280-289	3.6	4.1	3.9	4.0
Anemias	280-285	4.5	3.4	3.3	3.4
Mental Disorders	290-319	18.7	8.9	7.3	9.6
Psychoes	290-299	20.1	8.2	7.4	10.1
Schizophrenic Disorders	295	0.0	0.0	0.0	0.0
Major Depressive Disorder	296.2, 296.3	23.3	9.5	5.4	7.8
Diseases of the Nervous System and Sense Organs	320-389	3.4	3.8	5.6	5.9
Diseases of the Circulatory System	390-459	6.4	5.0	4.6	4.4
Essential Hypertension	401	0.0	2.9	2.8	3.3
Heart Disease	391 - 392.0, 393 - 398, 402,410-416, 420-429	5.5	4.7	4.2	4.3
Acute Myocardial Infarction	410	0.0	0.0	0.0	0.0
Coronary Atherosclerosis	414	0.0	1.0	2.2	2.6
Other Ischemic Heart Disease	411 - 413, 414.1 - 414.9	0.0	1.8	1.7	3.1
Cardiac Dysrhythmias	427	2.5	2.2	2.4	2.9
Congestive Heart Failure	428.0, 428.2 - 428.4	16.0	5.6	4.9	4.5
Cerebrovascular Disease	430 - 438	21.4	6.6	5.4	4.4
Diseases of the Respiratory System	460-519	3.1	4.8	5.5	5.2
Acute Bronchitis and Bronchiolitis	466	1.7	2.9	2.5	3.0
Pneumonia	480-486	3.2	4.4	4.7	4.8
Chronic Bronchitis	491	0.0	0.0	0.0	0.0
Asthma	493	1.5	1.0	3.5	3.0
Diseases of the Digestive System	520-579	4.1	3.6	4.4	4.9
Appendicitis	540-543	3.4	2.3	3.3	4.9
Non-Infectious Enteritis and Colitis	555-558	5.0	5.4	5.4	6.4
Intestinal Obstruction	560	2.8	4.8	5.7	7.5
Diverticula of Intestine	562	0.0	3.0	3.5	5.5
Cholelithiasis	574	2.0	2.5	3.8	6.7
Acute Pancreatitis	577	4.5	4.3	4.9	5.1
Diseases of the Genitourinary System	580-629	3.0	2.6	3.2	4.0
Calculus of Kidney and Ureter	592	1.0	2.4	3.0	3.1
Urinary Tract Infection	599	2.7	3.0	3.5	3.7
Complications of Pregnancy, Childbirth, and Puerperium	630-677	3.0	3.1	9.3	0.0
Diseases of the Skin and Subcutaneous Tissue	680-709	3.8	3.8	5.4	5.7
Cellulitis and Abscess	681-682	2.5	3.0	3.5	4.2
Diseases of the Musculoskeletal System and Connective Tissue	710-739	5.6	4.2	3.7	3.9
Osteoarthritis and Allied Disorders	715	0.0	0.0	0.0	0.0
Intervertebral Disc Disorders	722	0.0	1.3	1.3	2.2
Congenital Anomalies	740-759	3.9	3.9	5.1	3.9
Certain Conditions Originating in the Perinatal Period	760-779	3.0	0.0	0.0	0.0
Symptoms, Signs, and Ill-Defined Conditions	780-799	2.7	2.6	2.5	2.9
Injury and Poisoning	800-999	4.8	4.8	5.9	5.4
Fractures, All sites	800-829	3.8	5.5	5.8	5.0
Fracture of Neck of Femur	820	0.0	0.0	0.0	4.4
Poisonings	960-989	1.87	3.1	4.1	3.9
Certain Complications of Surgical and Medical Care	996-999	4.8	5.7	6.41	6.4
Supplementary Classifications	V01-V84	5.9	10.7	14.4	14.8
Females with Deliveries	V27	2.4	2.4	3.6	0.0

Note: Average Length of Stay is measured in days.

Appendix Table 8: Average Length of Stay by First-listed Diagnosis and Gender, New Mexico, 2011 - Expanded Listing

Category of First Listed Diagnosis	Diagnosis Codes (ICD-9-CM Codes)	Males	Females
Infectious and Parasitic Diseases	000-139	7.6	6.6
Septicemia	38	10.5	12.0
Neoplasms	140-239	6.4	5.3
Malignant Neoplasms	140 - 208, 230 - 234	6.5	6.3
Malignant Neoplasms of Large Intestine and Rectum	153 - 154, 197.5	8.5	7.6
Malignant Neoplasms of Trachea, Bronchi and Lung	162, 176.4, 197.0, 197.3	5.3	7.9
Benign Neoplasms	210 - 229	5.7	3.1
Benign Neoplasms of Uterus	218 - 219	0.0	2.1
Endocrine, Nutritional and Metabolic Diseases, and Immunity Disorders	240-279	4.5	3.9
Diabetes Mellitus	250	2.3	2.4
Volume Depletion	276.5	1.8	2.2
Diseases of the Blood and Blood-Forming Organs	280-289	4.0	4.0
Anemias	280-285	3.6	3.3
Mental Disorders	290-319	9.6	9.1
Psychoes	290-299	9.2	8.9
Schizophrenic Disorders	295	0.0	0.0
Major Depressive Disorder	296.2, 296.3	10.4	7.6
Diseases of the Nervous System and Sense Organs	320-389	5.3	4.5
Diseases of the Circulatory System	390-459	4.5	4.4
Essential Hypertension	401	2.7	3.3
Heart Disease	391 - 392.0, 393 - 398, 402,410-416, 420-429	4.3	4.3
Acute Myocardial Infarction	410	0.0	0
Coronary Atherosclerosis	414	2.4	2.8
Other Ischemic Heart Disease	411 - 413, 414.1 - 414.9	2.3	2.8
Cardiac Dysrhythmias	427	2.3	2.8
Congestive Heart Failure	428.0, 428.2 - 428.4	4.5	4.7
Cerebrovascular Disease	430 - 438	5.2	4.5
Diseases of the Respiratory System	460-519	5.1	4.7
Acute Bronchitis and Bronchiolitis	466	2.5	2.9
Pneumonia	480-486	4.5	4.5
Chronic Bronchitis	491	0.0	0.0
Asthma	493	3.0	2.0
Diseases of the Digestive System	520-579	4.4	4.3
Appendicitis	540-543	3.1	2.9
Non-Infectious Enteritis and Colitis	555-558	5.5	5.9
Intestinal Obstruction	560	2.6	4.9
Diverticula of Intestine	562	5.6	3.6
Cholelithiasis	574	4.9	3.2
Acute Pancreatitis	577	4.6	4.8
Diseases of the Genitourinary System	580-629	4.0	3.1
Calculus of Kidney and Ureter	592	2.4	3.0
Urinary Tract Infection	599	3.7	3.6
Complications of Pregnancy, Childbirth, and Puerperium	630-677	0.0	3.1
Diseases of the Skin and Subcutaneous Tissue	680-709	4.8	4.9
Cellulitis and Abscess	681-682	3.1	3.4
Diseases of the Musculoskeletal System and Connective Tissue	710-739	3.9	3.8
Osteoarthritis and Allied Disorders	715	0.0	0.0
Intervertebral Disc Disorders	722	1.4	1.4
Congenital Anomalies	740-759	4.5	3.9
Certain Conditions Originating in the Perinatal Period	760-779	0.0	3.0
Symptoms, Signs, and Ill-Defined Conditions	780-799	2.7	2.7
Injury and Poisoning	800-999	5.7	5.0
Fractures, All sites	800-829	5.8	4.8
Fracture of Neck of Femur	820	3.0	5.0
Poisonings	960-989	3.7	3.3
Certain Complications of Surgical and Medical Care	996-999	6.4	6.1
Supplementary Classifications	V01-V84	13.8	13.9
Females with Deliveries	V27	0.0	2.4

Category of First-listed Diagnosis

Diagnosis Codes

Note: Average Length of Stay is measured in days.

Appendix Table 9: Average Length of Stay by First-listed Diagnosis and Region, New Mexico, 2011 - Expanded Listing

Category of First Listed Diagnosis	Diagnosis Codes (ICD-9-CM Codes)	NW Region	NE Region	Metro	SE Region	SW Region
Infectious and Parasitic Diseases	000-139	7.9	6.4	7.7	5.5	6.7
Septicemia	38	11.1	10.3	11.3	8.6	13.6
Neoplasms	140-239	6.4	4.9	5.8	5.0	6.3
Malignant Neoplasms	140 - 208, 230 - 234	7.1	5.5	6.3	5.9	7.2
Malignant Neoplasms of Large Intestine and Rectum	153 - 154, 197.5	8.76	6.6	8.3	7.7	8.5
Malignant Neoplasms of Trachea, Bronchi and Lung	162, 176.4, 197.0, 197.3	6.5	6.2	5.5	12.7	5.7
Benign Neoplasms	210 - 229	4.4	3.0	3.5	3.0	3.7
Benign Neoplasms of Uterus	218 - 219	2.5	2.0	2.0	2.1	2.2
Endocrine, Nutritional and Metabolic Diseases, and Immunity Disorders	240-279	4.3	3.9	4.7	3.4	3.9
Diabetes Mellitus	250	1.4	2.5	2.7	2.0	2.3
Volume Depletion	276.5	1.6	1.5	3.5	2.5	2
Diseases of the Blood and Blood-Forming Organs	280-289	4.0	3.5	4.2	3.3	4.3
Anemias	280-285	4.0	3.3	3.4	3.0	3.6
Mental Disorders	290-319	7.5	7.4	10.7	8.3	10.0
Psychoes	290-299	6.2	7.4	10.3	8.2	9.8
Schizophrenic Disorders	295	0.0	0.0	0.0	0.0	0.0
Major Depressive Disorder	296.2, 296.3	4.7	4.7	11.7	13.6	9.0
Diseases of the Nervous System and Sense Organs	320-389	4.4	4.7	5.1	5.2	4.5
Diseases of the Circulatory System	390-459	4.3	4.4	4.7	3.5	4.7
Essential Hypertension	401	1.8	2.8	4.3	2.0	3.0
Heart Disease	391 - 392.0, 393 - 398, 402,410-416, 420-429	4.0	4.1	4.4	3.5	4.7
Acute Myocardial Infarction	410	0.0	0.0	0.0	0.0	0.0
Coronary Atherosclerosis	414	2.7	3.1	2.9	1.9	2.4
Other Ischemic Heart Disease	411 - 413, 414.1 - 414.9	2.0	3.1	1.95	1.9	3.9
Cardiac Dysrhythmias	427	2.4	2.2	2.7	2.0	3.2
Congestive Heart Failure	428.0, 428.2 - 428.4	4.8	4.3	4.9	4.0	5.0
Cerebrovascular Disease	430 - 438	5.4	4.9	4.9	3.7	4.8
Diseases of the Respiratory System	460-519	4.7	4.6	5.3	3.8	5.6
Acute Bronchitis and Bronchiolitis	466	2.2	2.9	2.6	2.9	3.0
Pneumonia	480-486	4.2	4.4	4.8	3.9	4.9
Chronic Bronchitis	491	0.0	0.0	0.0	0.0	0.0
Asthma	493	0.0	3.0	2.3	2.0	0.0
Diseases of the Digestive System	520-579	4.3	4.1	4.5	3.7	4.5
Appendicitis	540-543	2.6	3.2	3.1	3.1	3.1
Non-Infectious Enteritis and Colitis	555-558	4.6	6.5	6.0	4.8	5.6
Intestinal Obstruction	560	4.4	0.0	3.4	5.5	3.5
Diverticula of Intestine	562	0.0	3.3	4.0	10.0	5.5
Cholelithiasis	574	3.6	3.5	3.2	6.1	4.6
Acute Pancreatitis	577	5.5	4.9	4.9	3.4	4.6
Diseases of the Genitourinary System	580-629	3.5	3.3	3.5	3.1	3.6
Calculus of Kidney and Ureter	592	3.0	2.6	2.9	2.0	3.1
Urinary Tract Infection	599	3.1	3.6	3.6	3.5	4.0
Complications of Pregnancy, Childbirth, and Puerperium	630-677	2.3	2.8	3.9	2.5	2.6
Diseases of the Skin and Subcutaneous Tissue	680-709	4.8	4.2	5.4	4.1	4.9
Cellulitis and Abscess	681-682	3.1	3.2	3.3	2.8	3.8
Diseases of the Musculoskeletal System and Connective Tissue	710-739	4.6	3.7	3.8	3.6	3.8
Osteoarthritis and Allied Disorders	715	0.0	0.0	0.0	0.0	0.0
Intervertebral Disc Disorders	722	1.7	1.1	1.5	1.6	1.5
Congenital Anomalies	740-759	3.6	3.7	4.1	3.9	5.4
Certain Conditions Originating in the Perinatal Period	760-779	0.0	3.0	3.0	0.0	0.0
Symptoms, Signs, and Ill-Defined Conditions	780-799	2.5	2.5	2.9	2.4	2.9
Injury and Poisoning	800-999	5.5	5.2	5.6	4.4	5.3
Fractures, All sites	800-829	5.9	5.8	5.1	4.8	4.6
Fracture of Neck of Femur	820	0.0	5.0	0.0	0.0	4.3
Poisonings	960-989	3.2	2.8	3.7	2.9	4.0
Certain Complications of Surgical and Medical Care	996-999	6.3	5.4	6.3	5.1	7.2
Supplementary Classifications	V01-V84	20.9	12.1	13.5	10.8	12.8
Females with Deliveries	V27	2.2	2.5	2.6	2.1	2.2

Note: Average Length of Stay is measured in days.

New Mexico Department of Health
Epidemiology and Response Division
Harold L. Runnels Building
1190 S. St. Francis Dr., Ste
Santa Fe, NM 87502
Phone: (505) 827-2613
Fax: (505) 827-2530
<http://www.health.state.nm.us>