

DECEMBER 4, 2013

# TRAUMA REGISTRY

---

## MORTALITY STATISTICS

Liana Lujan

2005 - 2012

Trauma Program

EMS Bureau

Epidemiology and Response Division

New Mexico Department of Health



## TRAUMA REGISTRY DEATHS

### METHODS

#### Definitive Trauma Registry Records (DTRR)

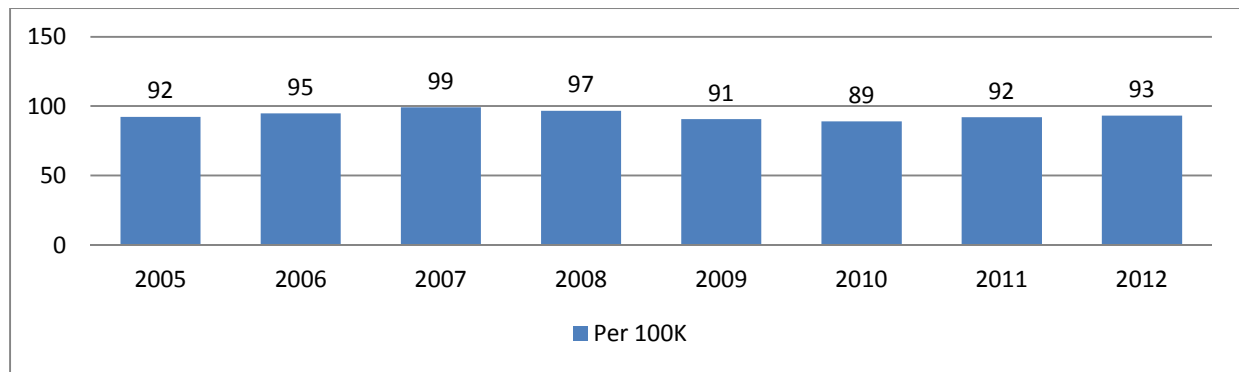
This report utilizes primarily Definitive Trauma Registry Records (DTRR). A DTRR is a record generated when a patient meets the state trauma registry inclusion criteria and does not have exclusion criteria, is then discharged from a facility to a non-acute care setting, (i.e., home, rehab or jail) or is discharged as dead. Patients who were transferred to a higher level of care within New Mexico were captured at the receiving facility. No out of state facility records were utilized for the purpose of this report. Trauma deaths, defined as DTRR's with a discharge status of "dead", were also used extensively in this report. The subset of deaths categorized as Dead on Arrival (DOA), defined as a patient who had a pre hospital systolic blood pressure of "0" and was pronounced dead after arrival to the emergency department, was removed from the total number of deaths.

Motor vehicle traffic injuries (MVT) included motor vehicle traffic injures, pedal cyclist injury, pedestrian injuries, and motorcycle injuries.

### RESULTS

The trauma registry program reviewed injury deaths in New Mexico utilizing IBIS data (Figure 1), and Figure 2 looks at trauma registry deaths versus trauma registry deaths that do not include those identified as DOA. In 2012 there were 1939 injury deaths, 201 Trauma Registry Deaths (10.4%) and 164 Trauma Registry Deaths Excluding DOA's (8.4%). From 2005 - 2012, there was little to no change in the injury death rate (Figure 1), whereas the number of trauma registry deaths increased by 3.0% from 2005 – 2008 to 2009 – 2012.

**Figure 1 Injury Death Rate\*, New Mexico 2005 - 2012**



\*Age adjusted to 2000 U.S. Standard Population Source IBIS, NMDOH

**Table 1 Trauma Registry Records with an Outcome of Death, New Mexico 2005 - 2012**

	Total Number of DTRR Records	Total Number of Injury Deaths, New Mexico	Total Number DTRR with an outcome of Death	Percent of Injury Deaths Captured by DTRR	Number of DTRR Deaths Excluding DOA
2005	2953	1764	158	9.0%	112
2006	3622	1826	218	11.9%	151
2007	4322	1944	241	12.4%	163
2008	4723	1911	200	10.5%	160
2009	5292	1826	226	12.4%	200
2010	5487	1817	185	10.2%	166
2011	5890	1899	230	12.1%	181
2012	6141	1939	201	10.4%	164

**Figure 2 Percent of Trauma Registry Records with an Outcome of Death Definitive Trauma Registry Record 2005 - 2012**

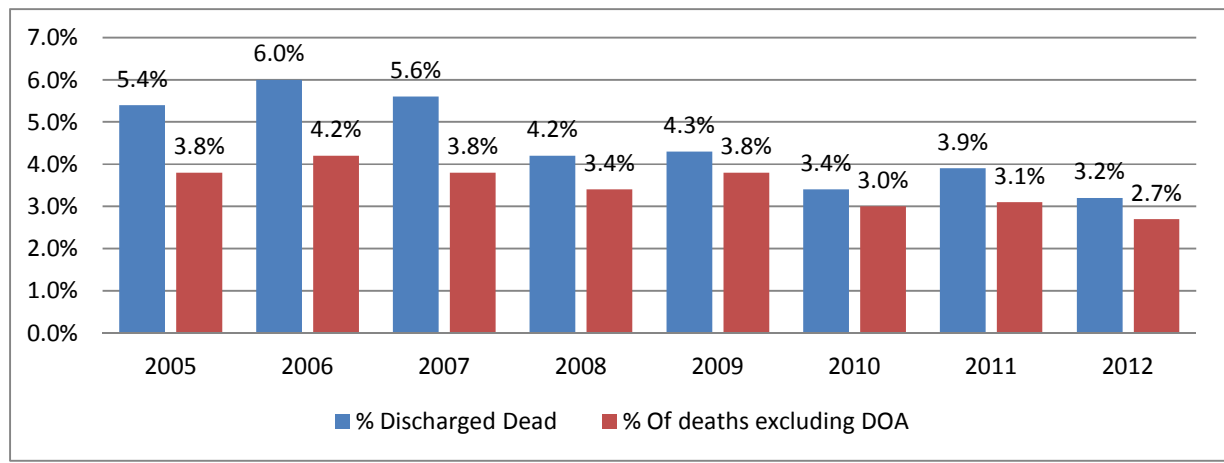


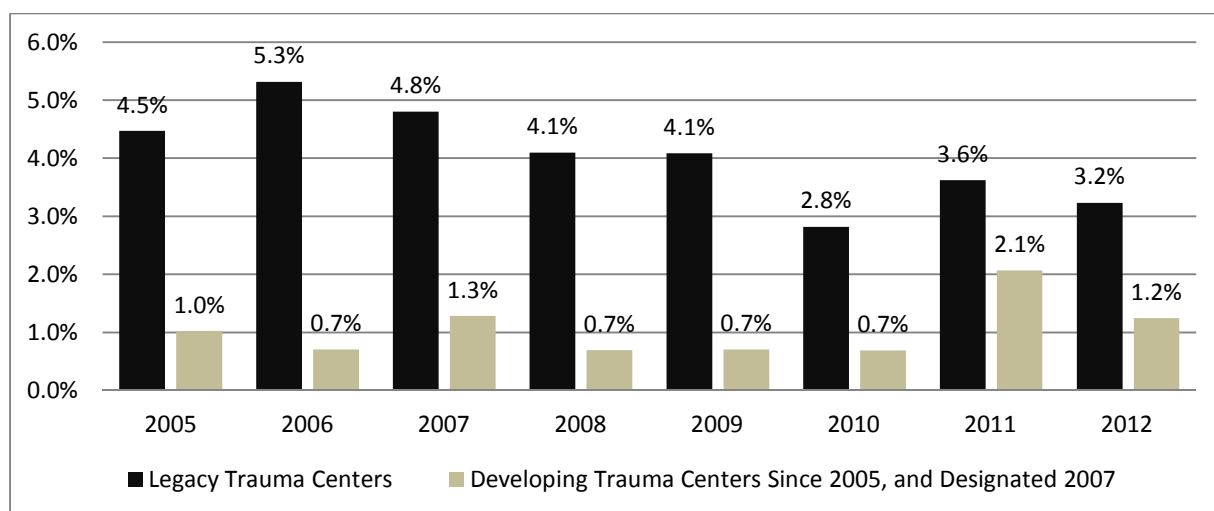
Figure 3 and Table 2 show some differences between Legacy Trauma Centers and Developing Trauma Centers. Legacy trauma centers are trauma centers designated prior to 2007. For the purpose of Figure 3 and Table 2, Developing Trauma Centers are facilities that began developing in 2005 and were designated as a trauma center in 2007. These include:

- Carlsbad Medical Center**
- Gerald Champion Regional Medical Center**
- Roosevelt General Hospital**
- Eastern New Mexico Medical Center**
- Nor-Lea General Hospital**

**Table 2** Trauma Registry Records by Year; Total and Number of Trauma Registry Deaths; Legacy Trauma Centers and Developing Trauma Centers, New Mexico  
2005 - 2012

	LEGACY TRAUMA CENTERS		DEVELOPING TRAUMA CENTERS	
	Total Number	Number of Deaths	TOTAL NUMBER	NUMBER OF DEATHS
2005	2171	97	488	5
2006	2503	133	702	5
2007	2791	134	857	11
2008	2954	121	1156	8
2009	3086	126	1556	11
2010	3338	93	1458	10
2011	3340	119	1162	13
2012	3529	105	1044	7

**Figure 3** Percent of DTRRs Excluding DOA's  
Legacy Trauma Centers and Developing Trauma Centers  
Definitive Trauma Registry Records, New Mexico  
2005 - 2012  
N = Legacy TC Deaths; 928, Developing Trauma Center Deaths; 70



**Table 3** Trauma Registry Records by Year and ISS; Deaths Excluding DOA's  
**Definitive Trauma Registry Records, New Mexico**  
**2005 - 2012**

**TOTAL**

ARRIVAL YEAR	ISS 1-8	ISS 9	ISS 10-15	ISS 16-24	ISS >=25	Grand Total
2005	1422	569	414	327	218	2950
2006	1620	816	426	426	331	3619
2007	1975	1156	457	419	309	4316
2008	2575	943	525	396	281	4720
2009	3051	960	552	415	311	5289
2010	3347	960	499	394	278	5478
2011	3252	1357	629	377	231	5846
2012	3460	1423	629	367	202	6081
Grand Total	20702	8184	4131	3121	2161	38299

**DEATHS EXCLUDING DOA's**

ARRIVAL YEAR	ISS 1-8	ISS 9	ISS 10-15	ISS 16-24	ISS >=25	Grand Total
2005	5	9	6	19	66	105
2006	6	13	1	19	106	145
2007	10	31	8	16	93	158
2008	17	29	8	19	75	148
2009	9	28	4	17	102	160
2010	15	30	10	11	60	126
2011	17	44	17	23	71	172
2012	13	34	13	22	68	150
Grand Total	92	218	67	146	641	1164

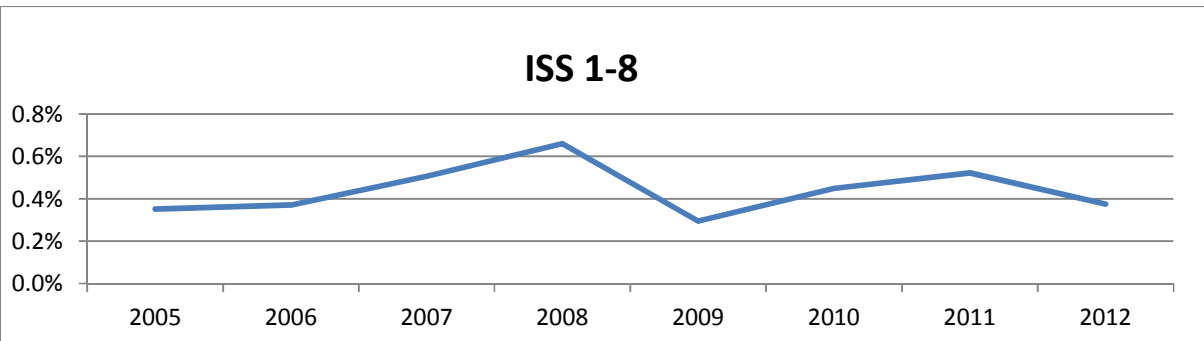
**PERCENT OF DTRR WITH A DEATH EXCLUDING DOA**

ARRIVAL YEAR	ISS 1-8	ISS 9	ISS 10-15	ISS 16-24	ISS >=25	Grand Total
2005	0.4%	1.6%	1.4%	5.8%	30.3%	3.6%
2006	0.4%	1.6%	0.2%	4.5%	32.0%	4.0%
2007	0.5%	2.7%	1.8%	3.8%	30.1%	3.7%
2008	0.7%	3.1%	1.5%	4.8%	26.7%	3.1%
2009	0.3%	2.9%	0.7%	4.1%	32.8%	3.0%
2010	0.4%	3.1%	2.0%	2.8%	21.6%	2.3%
2011	0.5%	3.2%	2.7%	6.1%	30.7%	2.9%
2012	0.4%	2.4%	2.1%	6.0%	33.7%	2.5%
Grand Total	92	218	67	146	641	1164

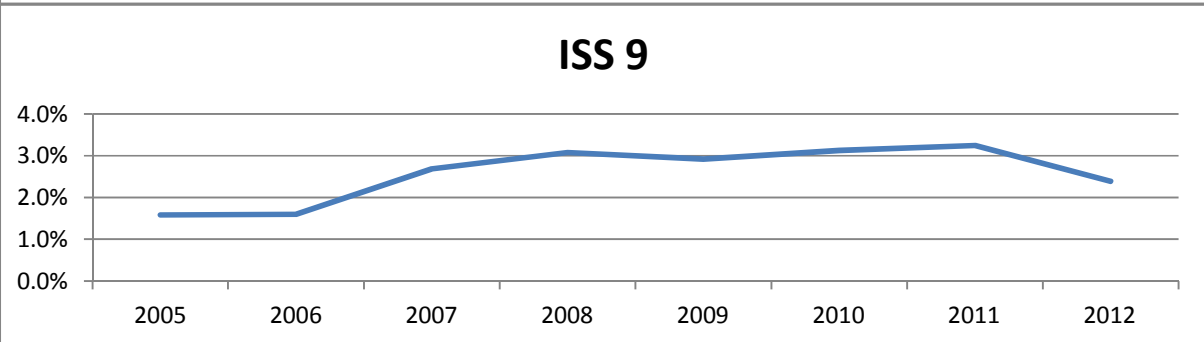
**Figures  
4 - 8**

**Percent of DTTR with a Death by ISS Range  
Definitive Trauma Registry Records, New Mexico  
2005 - 2012**

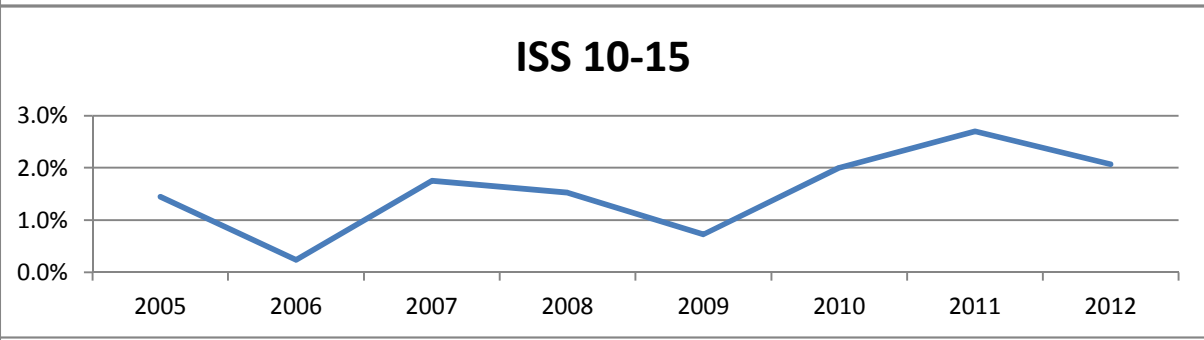
**Figure 4**



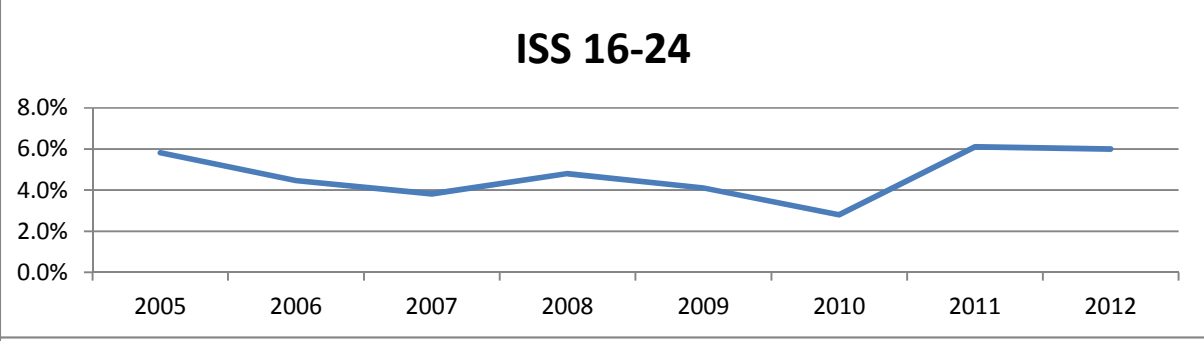
**Figure 5**



**Figure 6**



**Figure 7**



**Figure 8**

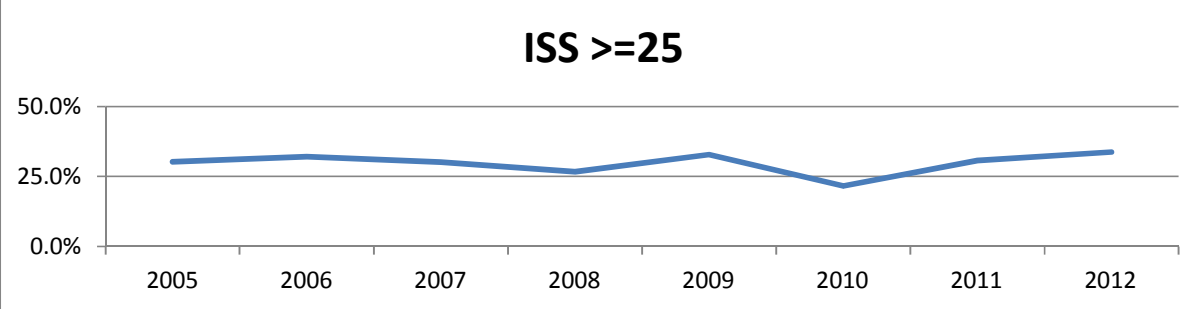


Table 4

**Trauma Registry Records by Cause of Injury and Year**  
**Definitive Trauma Registry Records, New Mexico**  
**2005 - 2012**

**TOTAL**

CAUSE OF INJURY	2005	2006	2007	2008	2009	2010	2011	2012	Grand Total
Falls	592	909	1656	1885	2103	2059	2552	2626	14382
Fire/Burn	17	43	123	150	179	180	163	167	1022
GSW	46	72	170	190	189	188	201	191	1247
Motor Vehicle Traffic	628	767	1397	1445	1648	1815	1879	1924	11503
Other/Assault	35	43	71	89	89	63	52	81	523
Stabbing	92	106	258	274	285	304	348	368	2035
Struck By/Against	131	144	291	325	460	453	418	498	2720
Unknown	1270	1331	46	33	2	1	22	19	2724
<b>TOTAL</b>	<b>1541</b>	<b>2084</b>	<b>3966</b>	<b>4358</b>	<b>4953</b>	<b>5062</b>	<b>5613</b>	<b>5855</b>	<b>33432</b>

**DEATHS**

CAUSE OF INJURY	2005	2006	2007	2008	2009	2010	2011	2012	Grand Total
Falls	21	33	60	71	69	66	77	54	451
Fire/Burn			4	4	3	5	3	3	22
GSW	3	2	18	11	25	12	25	13	109
Motor Vehicle Traffic	19	23	54	46	47	33	52	66	340
Other/Assault	3		2	2	4	1	2	3	17
Stabbing		1	6	5	2	1	2	3	20
Struck By/Against		1	3	6	7	6	8	7	38
Unknown	59	84	1	1	1			1	147
<b>TOTAL</b>	<b>46</b>	<b>60</b>	<b>147</b>	<b>145</b>	<b>157</b>	<b>124</b>	<b>169</b>	<b>149</b>	<b>997</b>

**PERCENT OF DTRRs WITH A DEATH EXCLUDING DOA**

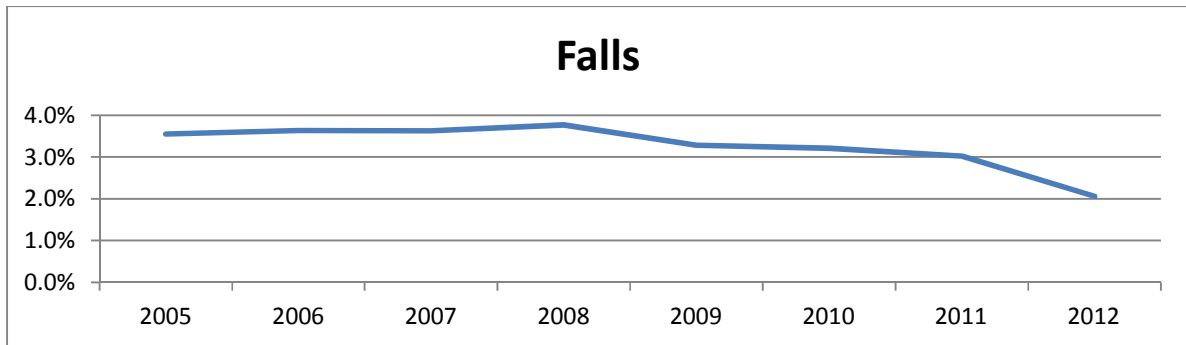
CAUSE OF INJURY	2005	2006	2007	2008	2009	2010	2011	2012	Grand Total
Falls	3.5%	3.6%	3.6%	3.8%	3.3%	3.2%	3.0%	2.1%	3.1%
Fire/Burn	0.0%	0.0%	3.3%	2.7%	1.7%	2.8%	1.8%	1.8%	2.2%
GSW	6.5%	2.8%	10.6%	5.8%	13.2%	6.4%	12.4%	6.8%	8.7%
Motor Vehicle Traffic	3.0%	3.0%	3.9%	3.2%	2.9%	1.8%	2.8%	3.4%	3.0%
Other/Assault	8.6%	0.0%	2.8%	2.2%	4.5%	1.6%	3.8%	3.7%	3.3%
Stabbing	0.0%	0.9%	2.3%	1.8%	0.7%	0.3%	0.6%	0.8%	1.0%
Struck By/Against	0.0%	0.7%	1.0%	1.8%	1.5%	1.3%	1.9%	1.4%	1.4%
Unknown	4.6%	6.3%	2.2%	3.0%	50.0%	0.0%	0.0%	5.3%	5.4%
<b>TOTAL</b>	<b>3.0%</b>	<b>2.9%</b>	<b>3.7%</b>	<b>3.3%</b>	<b>3.2%</b>	<b>2.4%</b>	<b>3.0%</b>	<b>2.5%</b>	<b>3.0%</b>



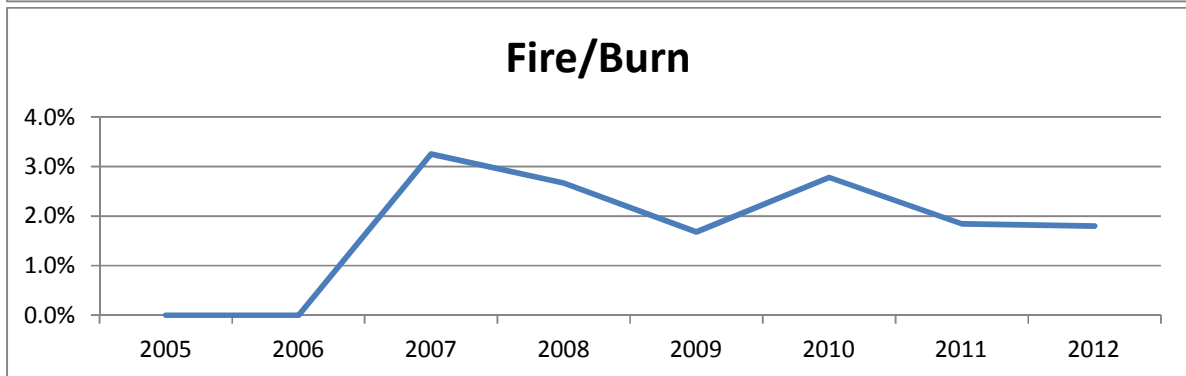
**Figures  
9-12**

**Percent of DTRR with a Death by Cause of Injury  
Definitive Trauma Registry Records, New Mexico  
2005 - 2012**

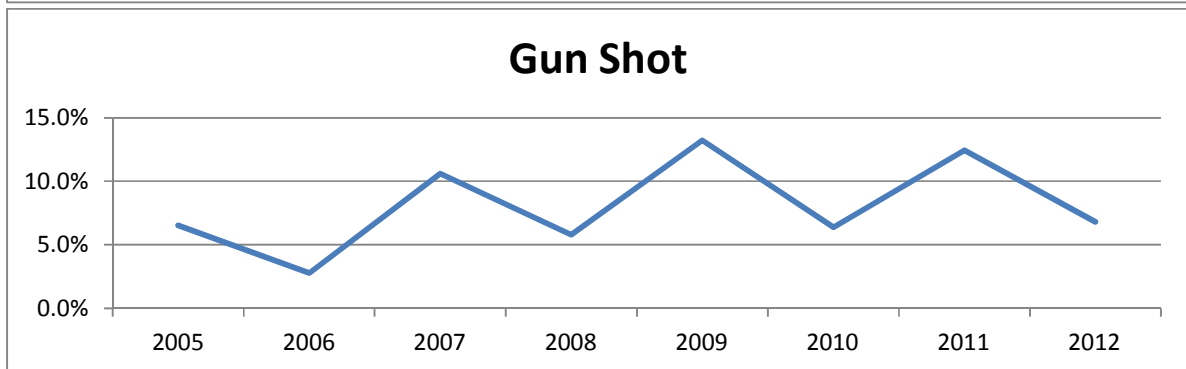
**Figure 9**



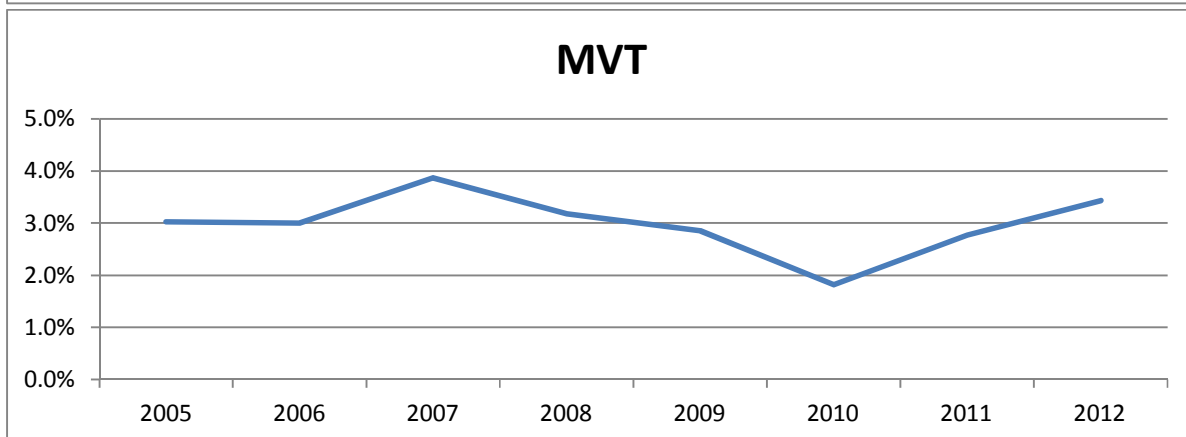
**Figure 10**



**Figure 11**



**Figure 12**



**Table 5**

**Fall Trauma Registry Records by Year and ISS**  
**Definitive Trauma Registry Records, New Mexico**  
**2005 – 2012**

**TOTAL FALLS BY ISS**

YEAR	ISS 1-8	ISS 9	ISS 10-15	ISS 16-24	ISS >=25	Grand Total
2005	310	205	26	36	13	590
2006	402	363	58	59	24	906
2007	711	696	94	102	51	1654
2008	1034	603	119	75	52	1883
2009	1229	600	126	80	66	2101
2010	1240	551	119	96	51	2057
2011	1269	954	200	65	55	2543
2012	1313	995	190	81	31	2610
Grand Total	7508	4967	932	594	343	14344

**FALL DEATHS BY ISS**

YEAR	ISS 1-8	ISS 9	ISS 10-15	ISS 16-24	ISS >=25	Grand Total
2005	1	6		6	8	21
2006	6	10		5	12	33
2007	8	24	2	6	20	60
2008	13	28	4	8	18	71
2009	6	27	4	7	25	69
2010	11	22	7	4	22	66
2011	9	31	10	7	20	77
2012	7	25	6	5	11	54
Grand Total	61	173	33	48	136	451

**PERCENT OF FALL DTRR WITH A DEATH**

YEAR	ISS 1-8	ISS 9	ISS 10-15	ISS 16-24	ISS >=25	Grand Total
2005	0.3%	2.9%	0.0%	16.7%	61.5%	3.6%
2006	1.5%	2.8%	0.0%	8.5%	50.0%	3.6%
2007	1.1%	3.4%	2.1%	5.9%	39.2%	3.6%
2008	1.3%	4.6%	3.4%	10.7%	34.6%	3.8%
2009	0.5%	4.5%	3.2%	8.8%	37.9%	3.3%
2010	0.9%	4.0%	5.9%	4.2%	43.1%	3.2%
2011	0.7%	3.2%	5.0%	10.8%	36.4%	3.0%
2012	0.5%	2.5%	3.2%	6.2%	35.5%	2.1%
Grand Total	0.8%	3.5%	3.5%	8.1%	39.7%	3.1%

Figures  
13 - 17

Percent of Fall DTRR with a Death by ISS  
Definitive Trauma Registry Records, New Mexico  
2005 - 2012

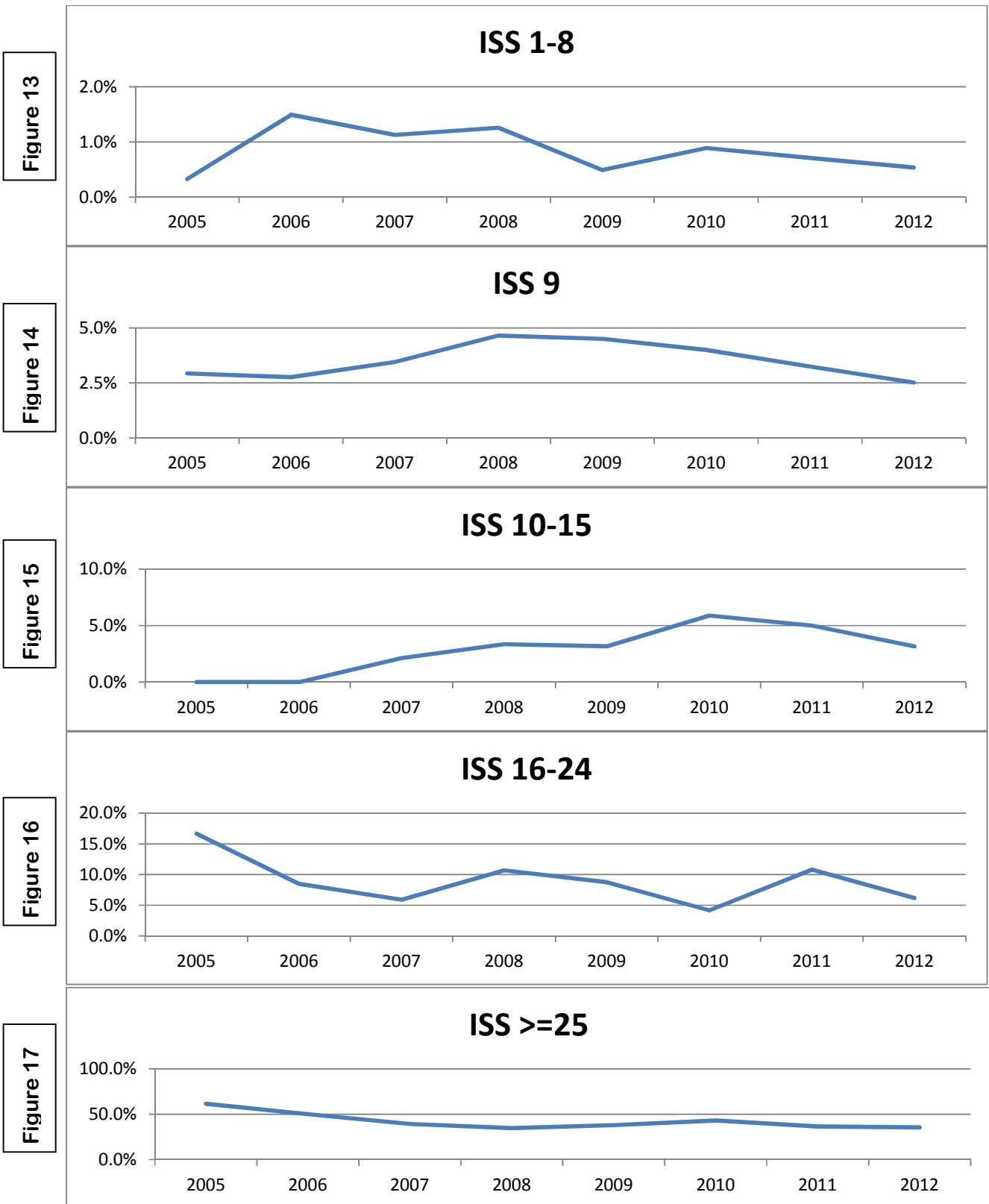


Table 6

**MVT Trauma Registry Records by Year and ISS**  
**Definitive Trauma Registry Records, New Mexico**  
**2005 - 2012**

**TOTAL MVT BY ISS**

YEAR	ISS 1-8	ISS 9	ISS 10-15	ISS 16-24	ISS >=25	Grand Total
2005	315	89	113	59	52	628
2006	347	132	114	101	73	767
2007	530	252	244	205	165	1396
2008	639	172	281	214	139	1445
2009	773	186	303	231	154	1647
2010	946	222	274	214	154	1810
2011	953	235	322	237	110	1857
2012	994	238	316	234	120	1902
<b>Grand Total</b>	<b>5497</b>	<b>1526</b>	<b>1967</b>	<b>1495</b>	<b>967</b>	<b>11452</b>

**MVT DEATHS BY ISS**

YEAR	ISS 1-8	ISS 9	ISS 10-15	ISS 16-24	ISS >=25	Grand Total
2005	1	2	3	2	11	19
2006		2		3	18	23
2007		1	5	3	45	54
2008	1	1	4	8	32	46
2009	1	1		6	39	47
2010	3		1	5	24	33
2011	5	4	5	10	27	51
2012	3	6	5	14	38	66
<b>Grand Total</b>	<b>14</b>	<b>17</b>	<b>23</b>	<b>51</b>	<b>234</b>	<b>339</b>

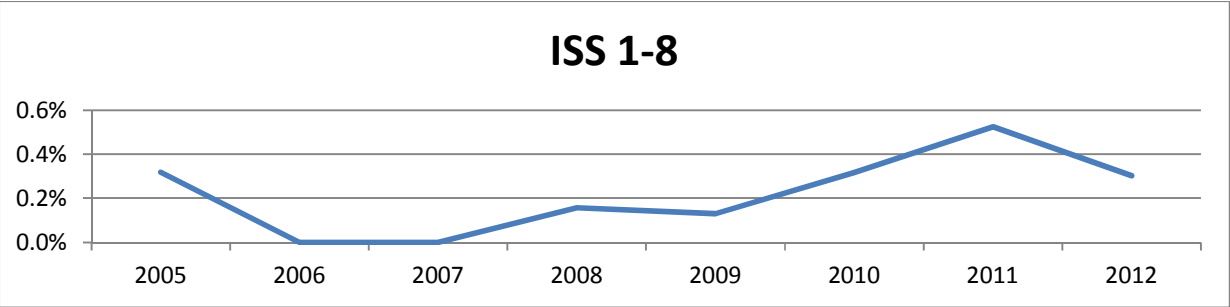
**PERCENT OF MVT DTRR WITH A DEATH**

YEAR	ISS 1-8	ISS 9	ISS 10-15	ISS 16-24	ISS >=25	Grand Total
2005	0.3%	2.2%	2.7%	3.4%	21.2%	3.0%
2006	0.0%	1.5%	0.0%	3.0%	24.7%	3.0%
2007	0.0%	0.4%	2.0%	1.5%	27.3%	3.9%
2008	0.2%	0.6%	1.4%	3.7%	23.0%	3.2%
2009	0.1%	0.5%	0.0%	2.6%	25.3%	2.9%
2010	0.3%	0.0%	0.4%	2.3%	15.6%	1.8%
2011	0.5%	1.7%	1.6%	4.2%	24.5%	2.7%
2012	0.3%	2.5%	1.6%	6.0%	31.7%	3.5%
<b>Grand Total</b>	<b>0.3%</b>	<b>1.1%</b>	<b>1.2%</b>	<b>3.4%</b>	<b>24.2%</b>	<b>3.0%</b>

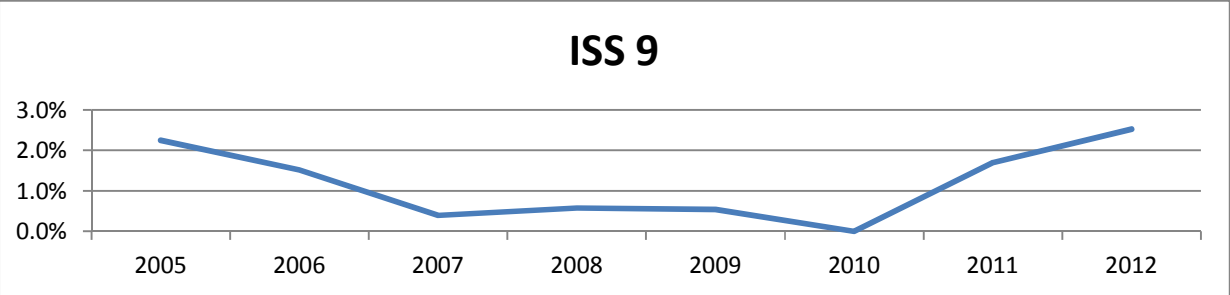
**Figures  
18 - 22**

**Percent of MVT DTRRs with a Death by ISS  
Definitive Trauma Registry Records, New Mexico  
2005 - 2012**

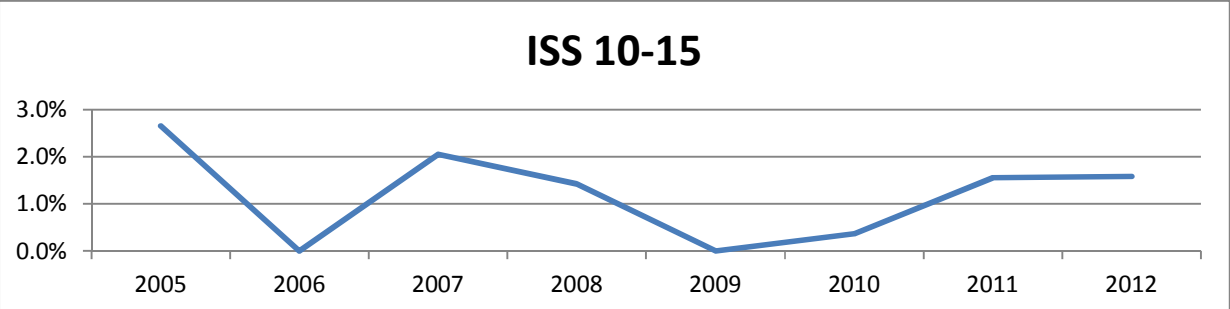
**Figure 18**



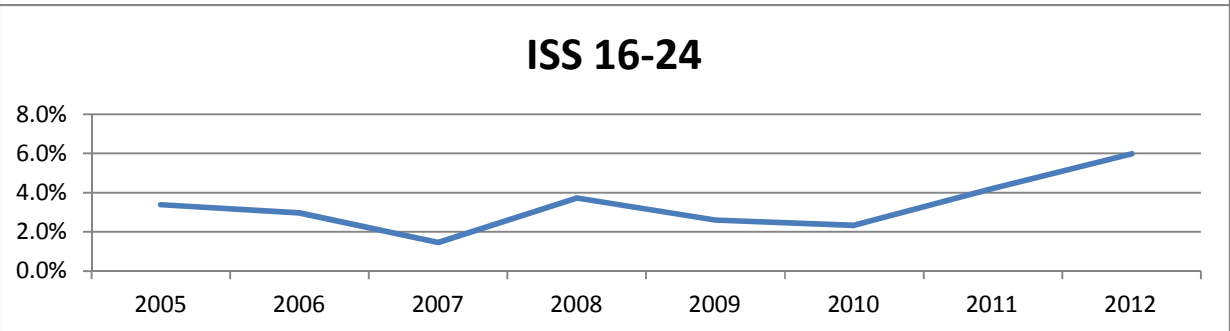
**Figure 19**



**Figure 20**



**Figure 21**



**Figure 22**

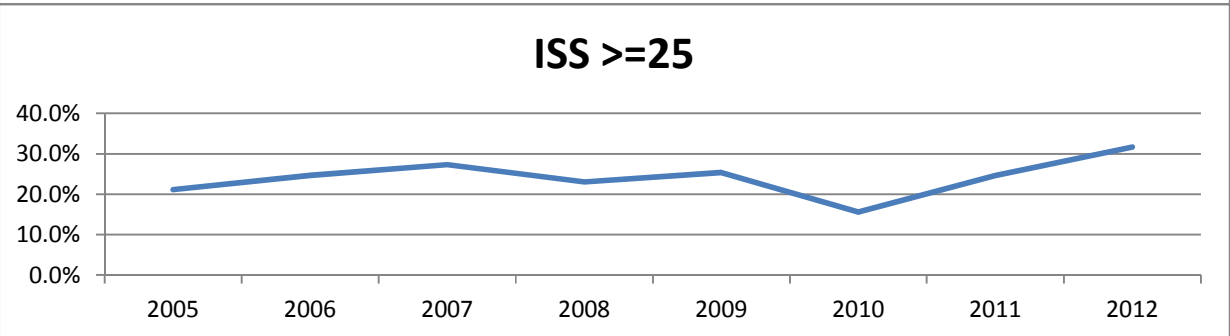


Table 7

**GSW DTRR by Year and ISS**  
**Definitive Trauma Registry Records, New Mexico**  
**2005 - 2012**

**TOTA GSW**

YEAR	ISS 1-8	ISS 9	ISS 10-15	ISS 16-24	ISS >=25	Grand Total
2005	19	8	3	5	11	46
2006	27	16	2	10	17	72
2007	57	28	24	18	43	170
2008	76	35	15	29	35	190
2009	72	34	16	25	42	189
2010	86	41	16	16	29	188
2011	93	39	24	25	20	201
2012	101	35	13	17	25	191
<b>Grand Total</b>	<b>531</b>	<b>236</b>	<b>113</b>	<b>145</b>	<b>222</b>	<b>1247</b>

**GSW DEATHS**

YEAR	ISS 1-8	ISS 9	ISS 10-15	ISS 16-24	ISS >=25	Grand Total
2005					3	3
2006				1	1	2
2007				2	16	18
2008					11	11
2009				3	22	25
2010		3		1	8	12
2011		8	1	4	12	25
2012		1	1	2	9	13
<b>Grand Total</b>	<b>0</b>	<b>12</b>	<b>2</b>	<b>13</b>	<b>82</b>	<b>109</b>

**PERCENT OF GSW DTRRs WITH A DEATH BY ISS**

YEAR	ISS 1-8	ISS 9	ISS 10-15	ISS 16-24	ISS >=25	Grand Total
2005	0.0%	0.0%	0.0%	0.0%	27.3%	6.5%
2006	0.0%	0.0%	0.0%	10.0%	5.9%	2.8%
2007	0.0%	0.0%	0.0%	11.1%	37.2%	10.6%
2008	0.0%	0.0%	0.0%	0.0%	31.4%	5.8%
2009	0.0%	0.0%	0.0%	12.0%	52.4%	13.2%
2010	0.0%	7.3%	0.0%	6.3%	27.6%	6.4%
2011	0.0%	20.5%	4.2%	16.0%	60.0%	12.4%
2012	0.0%	2.9%	7.7%	11.8%	36.0%	6.8%
<b>Grand Total</b>	<b>0.0%</b>	<b>5.1%</b>	<b>1.8%</b>	<b>9.0%</b>	<b>36.9%</b>	<b>8.7%</b>

**Note: No deaths from GSW with an ISS range of 1-8**

Figures  
23 - 26

**Percent of GSW DTRRs with a Death by ISS  
Definitive Trauma Registry Records, New Mexico  
2005 - 2012**

Figure 23

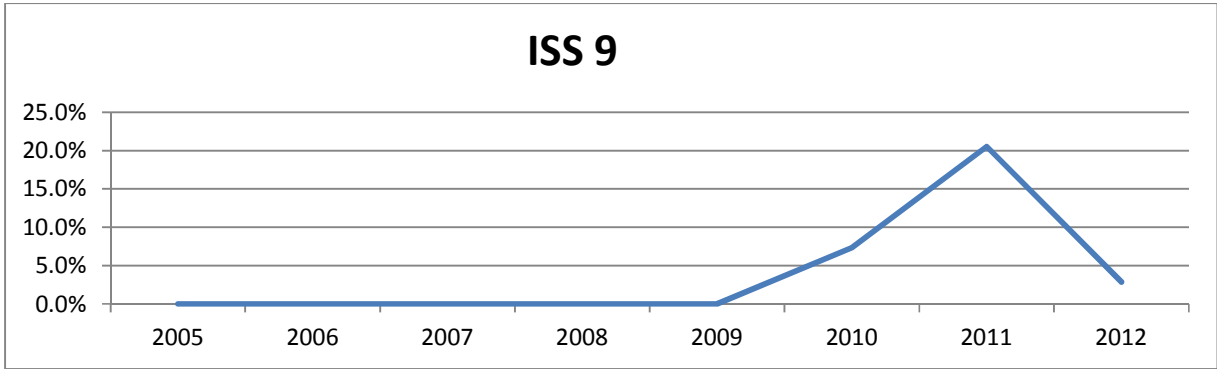


Figure 24

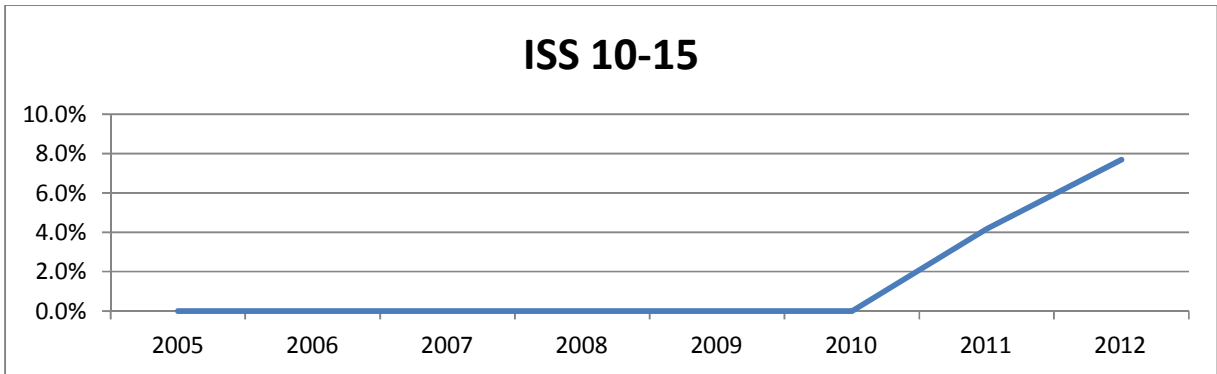


Figure 25

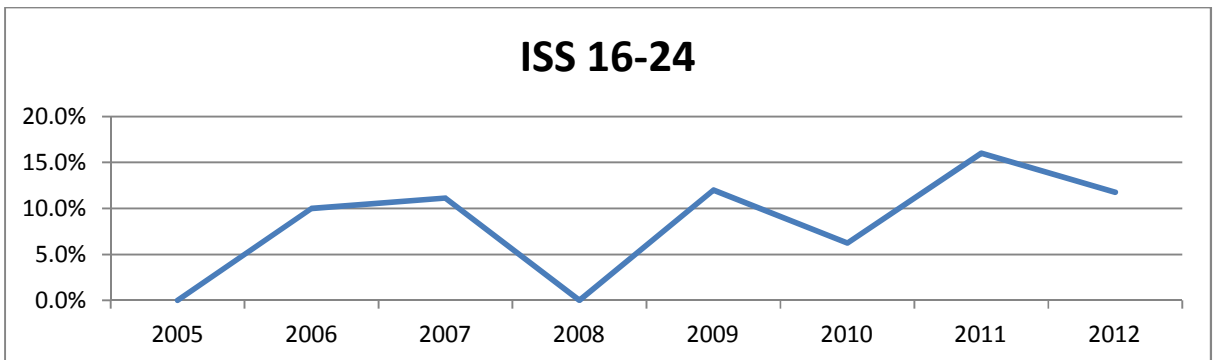
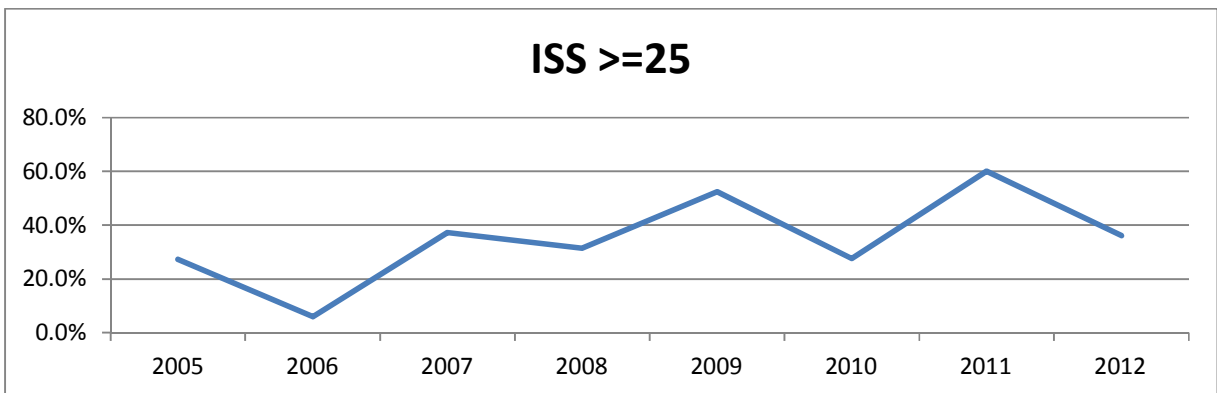


Figure 26







# **Ages 0 to 14 Years**

**Table 8**

**Trauma Registry Records Ages 0 to 14 Years  
Definitive Trauma Registry Records, New Mexico  
2005 - 2012**

**TOTAL Ages 0 to 14 Years by Specific Cause and Year**

Cause of Injury	2005	2006	2007	2008	2009	2010	2011	2012	Grand Total
-	187	189	4				3	3	386
Falls	106	130	279	254	419	324	283	297	2092
Fire/Burn	4	7	35	61	66	46	44	48	311
GSW	2	3	9	6	14	8	11	7	60
Machinery	1	1	2	3	3	3	1	1	15
MVC	67	90	181	167	196	218	203	185	1307
Other Assault	2	1	14	21	14	17	18	26	113
Other Cause	14	15	26	26	31	37	17	21	187
Other Suicide					1				1
Stabbing	4	3	9	7	4	6	14	17	64
Struck By/Against	19	20	46	46	72	47	41	56	347
Grand Total	406	459	605	591	820	706	635	661	4883

**Deaths Ages 0 to 14 Years by Specific Cause and Year**

Cause of Injury	2005	2006	2007	2008	2009	2010	2011	2012	Grand Total
-	3	7							10
Falls	1						1		2
GSW		1			1				2
MVC	1	1	1	1	2	3	2	2	13
Other Assault					2		1	1	4
Grand Total	5	9	1	1	5	3	4	3	31

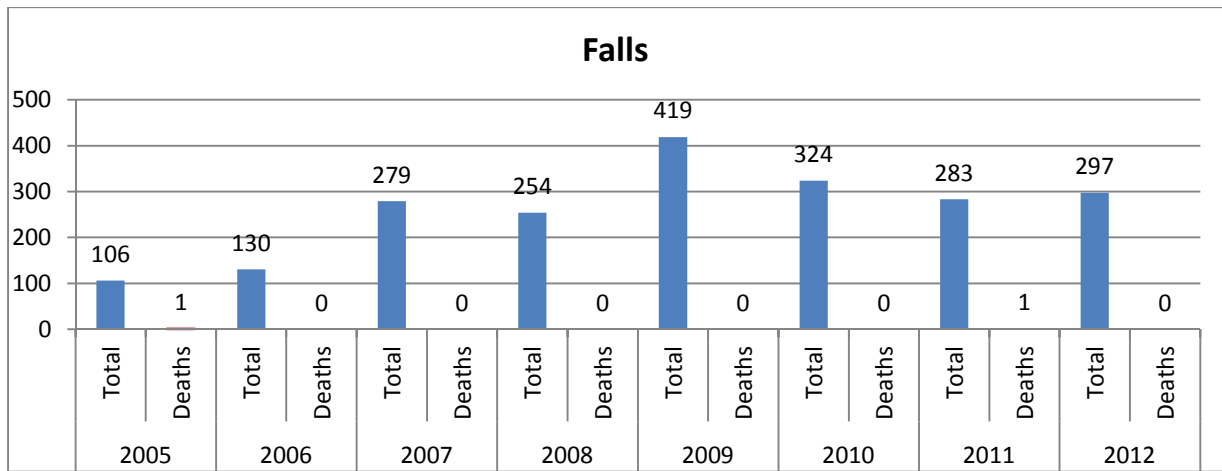
**Percent of DTRRs with a Death, Ages 0 to 14 Years**

Cause of Injury	2005	2006	2007	2008	2009	2010	2011	2012	Grand Total
-	1.6%	3.7%	0.0%	0.0%	0.0%	0.0%	0.0%	0.0%	2.6%
Falls	0.9%	0.0%	0.0%	0.0%	0.0%	0.0%	0.4%	0.0%	0.1%
GSW	0.0%	33.3%	0.0%	0.0%	7.1%	0.0%	0.0%	0.0%	3.3%
MVC	1.5%	1.1%	0.6%	0.6%	1.0%	1.4%	1.0%	1.1%	1.0%
Other Assault	0.0%	0.0%	0.0%	0.0%	14.3%	0.0%	5.6%	3.8%	3.5%
Grand Total	1.2%	2.0%	0.2%	0.2%	0.6%	0.4%	0.6%	0.5%	0.6%

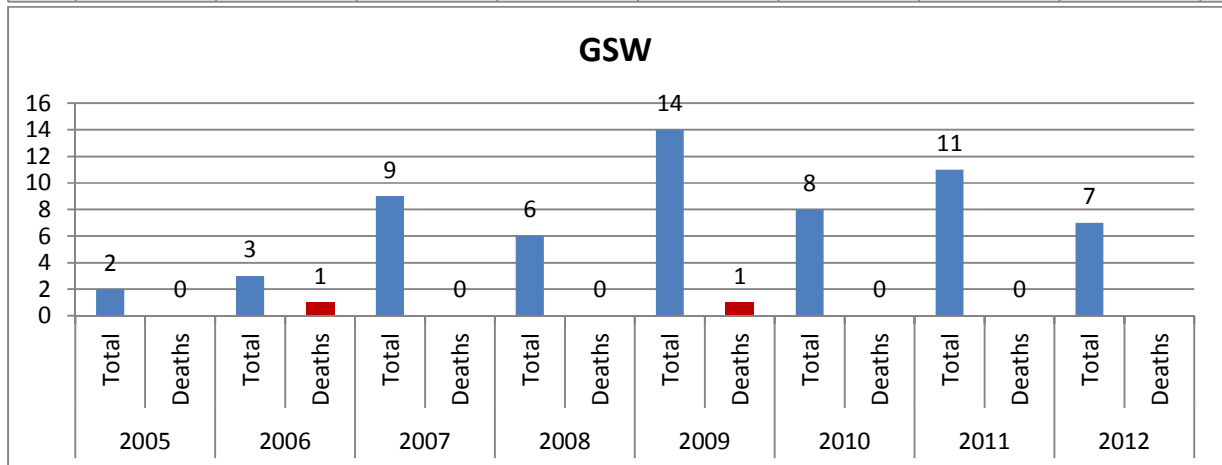
**Figures  
26 - 28**

**Number of Trauma Registry Records and Deaths by Ages 0 to 14 Years  
Definitive Trauma Registry Records, New Mexico  
2005 - 2012**

**Figure 26**



**Figure 27**



**Figure 28**

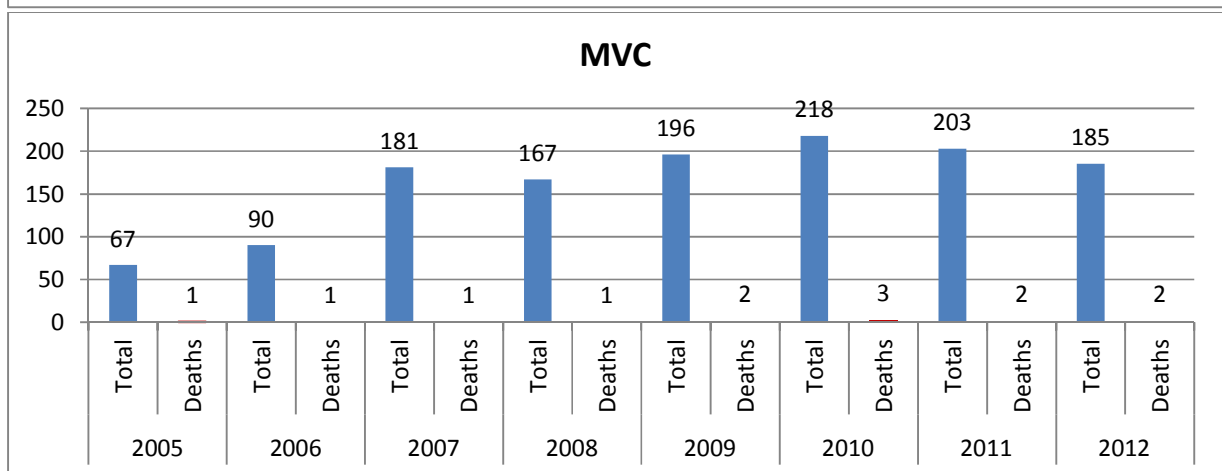


Table 9

**Trauma Registry Records Ages 0 to 14 Years**  
**Definitive Trauma Registry Records, New Mexico**  
**2005 - 2012**

**TOTAL Ages 0 to 14 Years by Year and ISS**

YEAR	ISS 1-8	ISS 9	ISS 10-15	ISS 16-24	ISS >=25	Unknown	Grand Total
2005	305	104	38	57	32	2	538
2006	310	117	60	58	37		582
2007	439	181	46	61	41	2	770
2008	532	96	58	50	38		774
2009	788	160	77	73	22		1120
2010	717	166	52	60	42	3	1040
2011	625	128	59	54	22	2	890
2012	611	144	69	46	22	13	905
<b>Grand Total</b>	<b>4327</b>	<b>1096</b>	<b>459</b>	<b>459</b>	<b>256</b>	<b>22</b>	<b>6619</b>

**Deaths Ages 0 to 14 Years by Year and ISS**

YEAR	ISS 1-8	ISS 9	ISS 10-15	ISS 16-24	ISS >=25	Unknown	Grand Total
2005					5		5
2006			1		8		9
2007					1		1
2008					1		1
2009				3	2		5
2010					3		3
2011		1			3		4
2012		1			2		3
<b>Grand Total</b>		<b>2</b>	<b>1</b>	<b>3</b>	<b>25</b>		<b>31</b>

**Percent of DTRR with a Death Ages 0 to 14 Years**

YEAR	ISS 1-8	ISS 9	ISS 10-15	ISS 16-24	ISS >=25	Unknown	Grand Total
2005	0.0%	0.0%	0.0%	0.0%	15.6%	0.0%	0.9%
2006	0.0%	0.0%	1.7%	0.0%	21.6%	0.0%	1.5%
2007	0.0%	0.0%	0.0%	0.0%	2.4%	0.0%	0.1%
2008	0.0%	0.0%	0.0%	0.0%	2.6%	0.0%	0.1%
2009	0.0%	0.0%	0.0%	4.1%	9.1%	0.0%	0.4%
2010	0.0%	0.0%	0.0%	0.0%	7.1%	0.0%	0.3%
2011	0.0%	0.8%	0.0%	0.0%	13.6%	0.0%	0.4%
2012	0.0%	0.7%	0.0%	0.0%	9.1%	0.0%	0.3%
<b>Grand Total</b>	<b>0.0%</b>	<b>0.2%</b>	<b>0.2%</b>	<b>0.7%</b>	<b>9.8%</b>	<b>0.0%</b>	<b>0.5%</b>

# **Ages 15 to 34 Years**

**Table 10**

**Trauma Registry Records Ages 15 to 34 Years**  
**Definitive Trauma Registry Records, New Mexico**  
**2005 - 2012**

**TOTAL Ages 15 to 34 years by Specific Cause and Year**

Cause of Injury	2005	2006	2007	2008	2009	2010	2011	2012	Grand Total
Falls	65	91	165	196	207	250	241	219	1434
Fire/Burn	3	15	32	33	45	48	45	47	268
GSW	32	54	108	128	117	113	117	118	787
Machinery	13	16	27	24	21	34	18	20	173
MVC	268	311	572	615	687	710	719	783	4665
Other Assault	24	16	28	40	45	26	16	31	226
Other Cause	28	29	45	53	51	71	42	32	351
Other Suicide		2	5	8	10	7	5	1	38
Stabbing	66	63	153	166	174	187	192	206	1207
Struck By/Against	69	63	114	147	197	208	181	219	1198
Unknown	515	507	12	8			8	4	1054
<b>Grand Total</b>	<b>1083</b>	<b>1167</b>	<b>1261</b>	<b>1418</b>	<b>1554</b>	<b>1654</b>	<b>1584</b>	<b>1680</b>	<b>11401</b>

**Deaths Ages 15 to 34 Years by Specific Cause and Year**

Cause of Injury	2005	2006	2007	2008	2009	2010	2011	2012	Grand Total
Falls	1		1	1	1	1	3	2	10
Fire/Burn						1			1
GSW	3		10	6	19	5	12	6	61
MVC	3	6	16	11	19	10	15	16	96
Other Assault			1					1	2
Other Cause		1	1	1			1		4
Other Suicide					1	1			2
Stabbing			4	2	1	1		2	10
Struck By/Against					3		1		4
Unknown	16	24							40
<b>Grand Total</b>	<b>23</b>	<b>31</b>	<b>33</b>	<b>21</b>	<b>44</b>	<b>19</b>	<b>32</b>	<b>27</b>	<b>230</b>

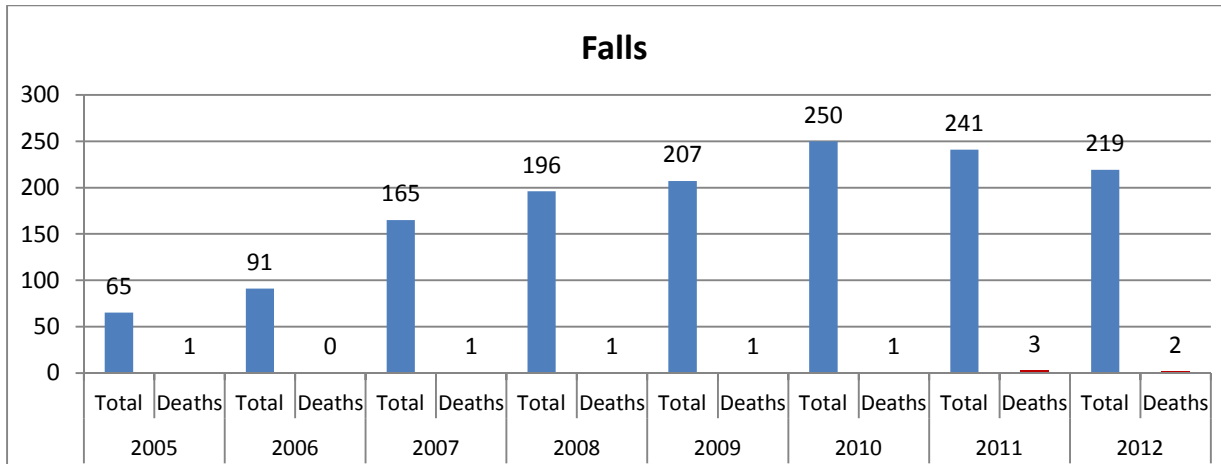
**Percent of DTRR with a Death Ages 15 to 34 Years**

Cause of Injury	2005	2006	2007	2008	2009	2010	2011	2012	Grand Total
Falls	1.5%	0.0%	0.6%	0.5%	0.5%	0.4%	1.2%	0.9%	0.7%
Fire/Burn	0.0%	0.0%	0.0%	0.0%	0.0%	2.1%	0.0%	0.0%	0.4%
GSW	9.4%	0.0%	9.3%	4.7%	16.2%	4.4%	10.3%	5.1%	7.8%
MVC	1.1%	1.9%	2.8%	1.8%	2.8%	1.4%	2.1%	2.0%	2.1%
Other Assault	0.0%	0.0%	3.6%	0.0%	0.0%	0.0%	0.0%	3.2%	0.9%
Other Cause	0.0%	3.4%	2.2%	1.9%	0.0%	0.0%	2.4%	0.0%	1.1%
Other Suicide	0.0%	0.0%	0.0%	0.0%	10.0%	14.3%	0.0%	0.0%	5.3%
Stabbing	0.0%	0.0%	2.6%	1.2%	0.6%	0.5%	0.0%	1.0%	0.8%
Struck By/Against	0.0%	0.0%	0.0%	0.0%	1.5%	0.0%	0.6%	0.0%	0.3%
Unknown	3.1%	4.7%	0.0%	0.0%	0.0%	0.0%	0.0%	0.0%	3.8%
<b>Grand Total</b>	<b>2.1%</b>	<b>2.7%</b>	<b>2.6%</b>	<b>1.5%</b>	<b>2.8%</b>	<b>1.1%</b>	<b>2.0%</b>	<b>1.6%</b>	<b>2.0%</b>

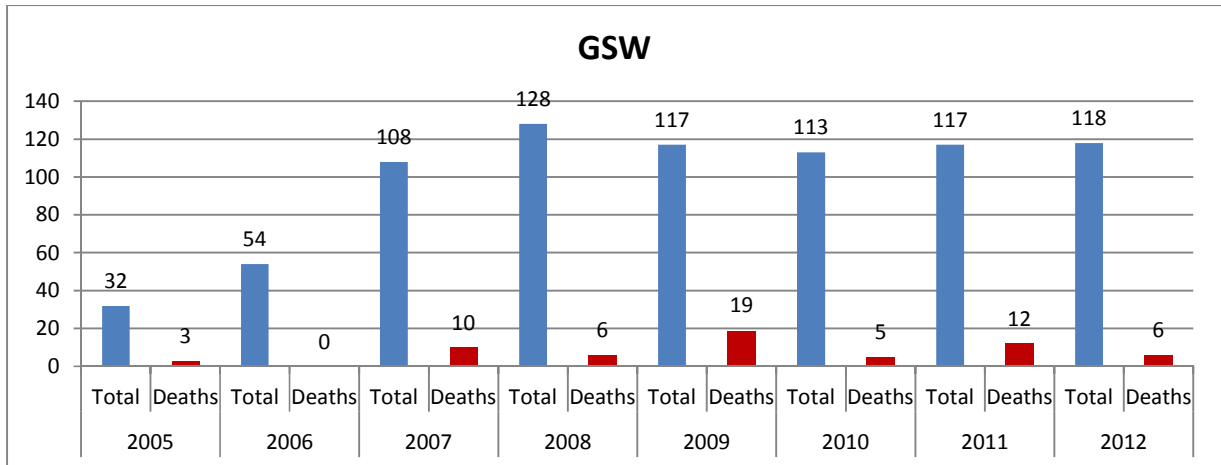
**Figures 29-31**

**Number of Trauma Registry Records Ages 15 to 34 Years  
Definitive Trauma Registry Records, New Mexico  
2005 - 2012**

**Figure 29**



**Figure 30**



**Figure 31**

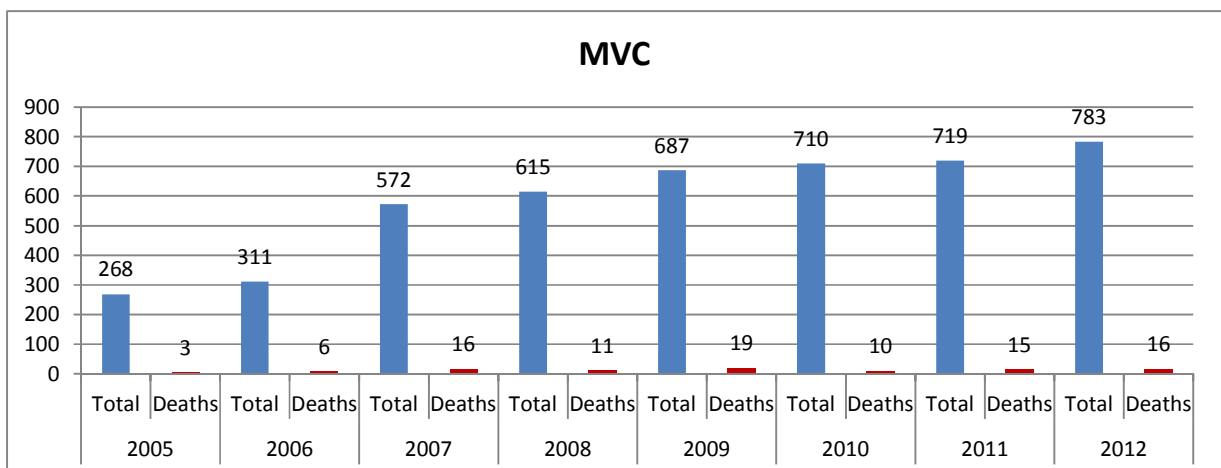


Table 11

**Trauma Registry Records Ages 15 to 34 Years**  
**Definitive Trauma Registry Records, New Mexico**  
**2005 – 2012**

**TOTAL Ages 15 to 34 years by Year and ISS**

YEAR	ISS 1-8	ISS 9	ISS 10-15	ISS 16-24	ISS >=25	Unknown	Grand Total
2005	675	206	200	175	160	1	1417
2006	632	239	171	212	185	1	1440
2007	739	250	204	215	156	2	1566
2008	976	238	229	178	150	1	1772
2009	1242	235	307	220	195		2199
2010	1403	233	239	216	150	4	2245
2011	1331	246	242	207	114	18	2158
2012	1319	263	247	176	105	23	2133
<b>Grand Total</b>	<b>8317</b>	<b>1910</b>	<b>1839</b>	<b>1599</b>	<b>1215</b>	<b>50</b>	<b>14930</b>

**Death Ages 15 to 34 by Year and ISS**

YEAR	ISS 1-8	ISS 9	ISS 10-15	ISS 16-24	ISS >=25	Unknown	Grand Total
2005				2	21		23
2006				2	29		31
2007		1		4	28		33
2008	1			1	19		21
2009				1	43		44
2010		3		2	14		19
2011		5	3	7	17		32
2012	1	2	1	6	17		27
<b>Grand Total</b>	<b>2</b>	<b>11</b>	<b>4</b>	<b>25</b>	<b>188</b>		<b>230</b>

**Percent of DTRR with a Death Ages 15 to 34 Years**

YEAR	ISS 1-8	ISS 9	ISS 10-15	ISS 16-24	ISS >=25	Unknown	Grand Total
2005	0.0%	0.0%	0.0%	1.1%	13.1%	0.0%	1.6%
2006	0.0%	0.0%	0.0%	0.9%	15.7%	0.0%	2.2%
2007	0.0%	0.4%	0.0%	1.9%	17.9%	0.0%	2.1%
2008	0.1%	0.0%	0.0%	0.6%	12.7%	0.0%	1.2%
2009	0.0%	0.0%	0.0%	0.5%	22.1%	0.0%	2.0%
2010	0.0%	1.3%	0.0%	0.9%	9.3%	0.0%	0.8%
2011	0.0%	2.0%	1.2%	3.4%	14.9%	0.0%	1.5%
2012	0.1%	0.8%	0.4%	3.4%	16.2%	0.0%	1.3%
<b>Grand Total</b>	<b>0.0%</b>	<b>0.6%</b>	<b>0.2%</b>	<b>1.6%</b>	<b>15.5%</b>	<b>0.0%</b>	<b>1.5%</b>



# **Ages 35 to 64 Years**

Table 12

**Trauma Registry Records Ages 35 to 64 Years**  
**Definitive Trauma Registry Records, New Mexico**  
**2005 – 2012**

**TOTAL Ages 35 to 65 Years**

Cause of Injury	2005	2006	2007	2008	2009	2010	2011	2012	Grand Total
Falls	203	263	494	568	561	595	628	630	3942
Fire/Burn	9	16	47	45	56	67	53	61	354
GSW	11	14	49	53	54	66	65	59	371
Machinery	24	24	36	46	36	40	33	24	263
MVC	234	295	521	534	617	677	740	742	4360
Other Assault	9	22	28	25	26	19	17	24	170
Other Cause	31	54	64	70	54	81	56	77	487
Other Suicide	1		4	2	4	4	6	3	24
Stabbing	22	36	90	91	101	108	130	138	716
Struck By/Against	39	54	114	122	169	181	163	190	1032
Unknown	479	487	16	11		1	6	6	1006
<b>Grand Total</b>	<b>1062</b>	<b>1265</b>	<b>1463</b>	<b>1567</b>	<b>1678</b>	<b>1839</b>	<b>1897</b>	<b>1954</b>	<b>12725</b>

**Deaths Ages 35 to 64 Years**

Cause of Injury	2005	2006	2007	2008	2009	2010	2011	2012	Grand Total
Falls	2	4	7	10	12	15	14	13	77
Fire/Burn			2	1	3	1		2	9
GSW		1	6	4	3	7	9	5	35
Machinery			2			1			3
MVC	9	10	22	20	17	10	26	30	144
Other Assault	3			2	2	1	1	1	10
Other Cause			4	1					5
Other Suicide			1		1		2	1	5
Stabbing		1	2	2			1	1	7
Struck By/Against		1	2	6	4	2	6	5	26
Unknown	25	31						1	57
<b>Grand Total</b>	<b>39</b>	<b>48</b>	<b>48</b>	<b>46</b>	<b>42</b>	<b>37</b>	<b>59</b>	<b>59</b>	<b>378</b>

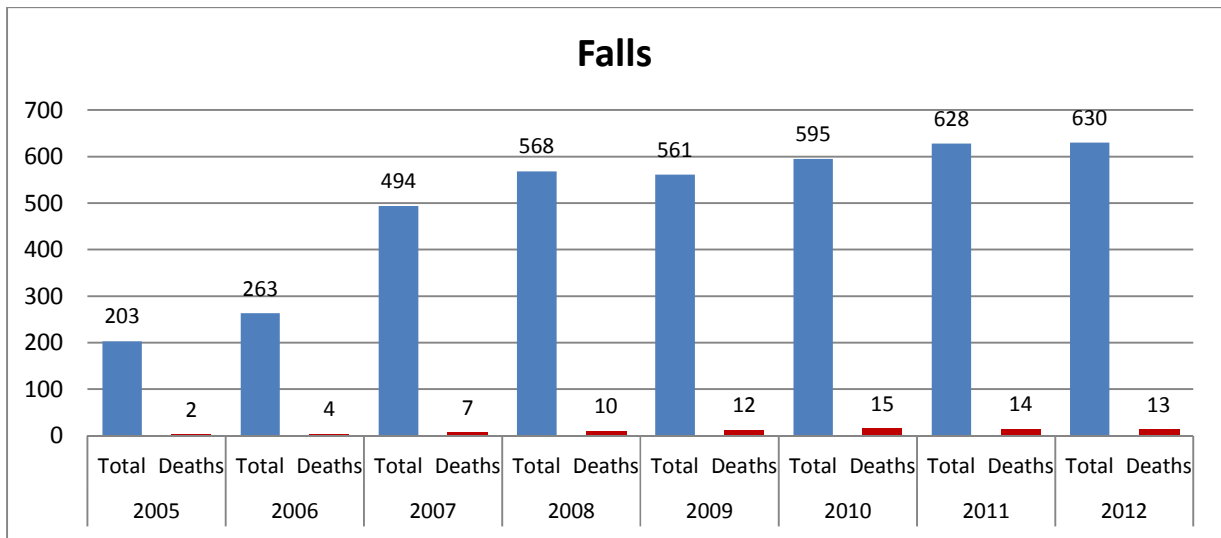
**Percent of DTRRs with a Death Ages 35 to 64 Years**

Cause of Injury	2005	2006	2007	2008	2009	2010	2011	2012	Grand Total
Falls	1.0%	1.5%	1.4%	1.8%	2.1%	2.5%	2.2%	2.1%	2.0%
Fire/Burn	0.0%	0.0%	4.3%	2.2%	5.4%	1.5%	0.0%	3.3%	2.5%
GSW	0.0%	7.1%	12.2%	7.5%	5.6%	10.6%	13.8%	8.5%	9.4%
Machinery	0.0%	0.0%	5.6%	0.0%	0.0%	2.5%	0.0%	0.0%	1.1%
MVC	3.8%	3.4%	4.2%	3.7%	2.8%	1.5%	3.5%	4.0%	3.3%
Other Assault	33.3%	0.0%	0.0%	8.0%	7.7%	5.3%	5.9%	4.2%	5.9%
Other Cause	0.0%	0.0%	6.3%	1.4%	0.0%	0.0%	0.0%	0.0%	1.0%
Other Suicide	0.0%	0.0%	25.0%	0.0%	25.0%	0.0%	33.3%	33.3%	20.8%
Stabbing	0.0%	2.8%	2.2%	2.2%	0.0%	0.0%	0.8%	0.7%	1.0%
Struck By/Against	0.0%	1.9%	1.8%	4.9%	2.4%	1.1%	3.7%	2.6%	2.5%
Unknown	5.2%	6.4%	0.0%	0.0%	0.0%	0.0%	0.0%	16.7%	5.7%
<b>Grand Total</b>	<b>3.7%</b>	<b>3.8%</b>	<b>3.3%</b>	<b>2.9%</b>	<b>2.5%</b>	<b>2.0%</b>	<b>3.1%</b>	<b>3.0%</b>	<b>3.0%</b>

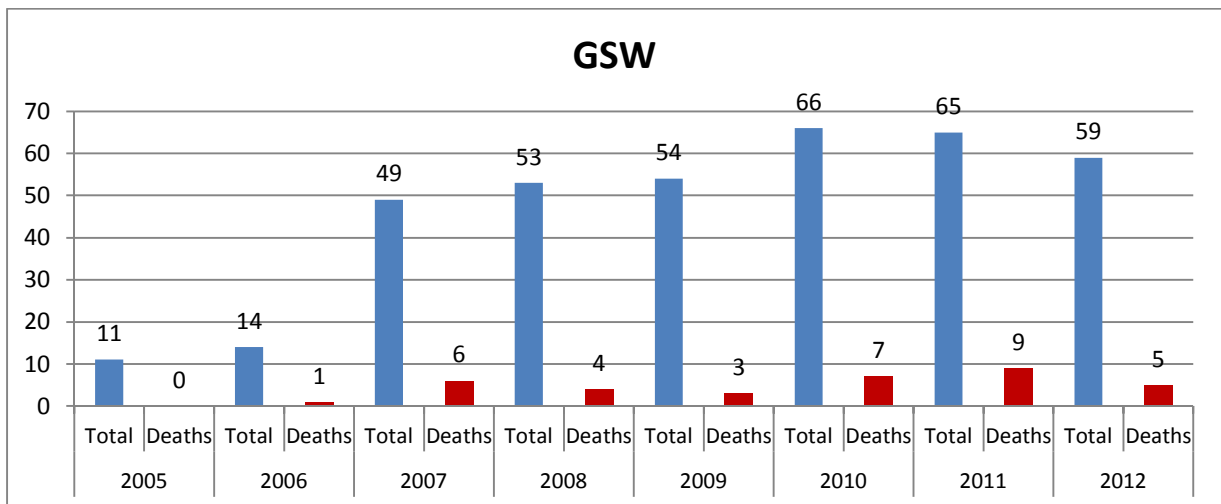
**Figures  
32-34**

**Trauma Registry Records Ages 35 to 64 Years  
Definitive Trauma Registry Records, New Mexico  
2005 – 2012**

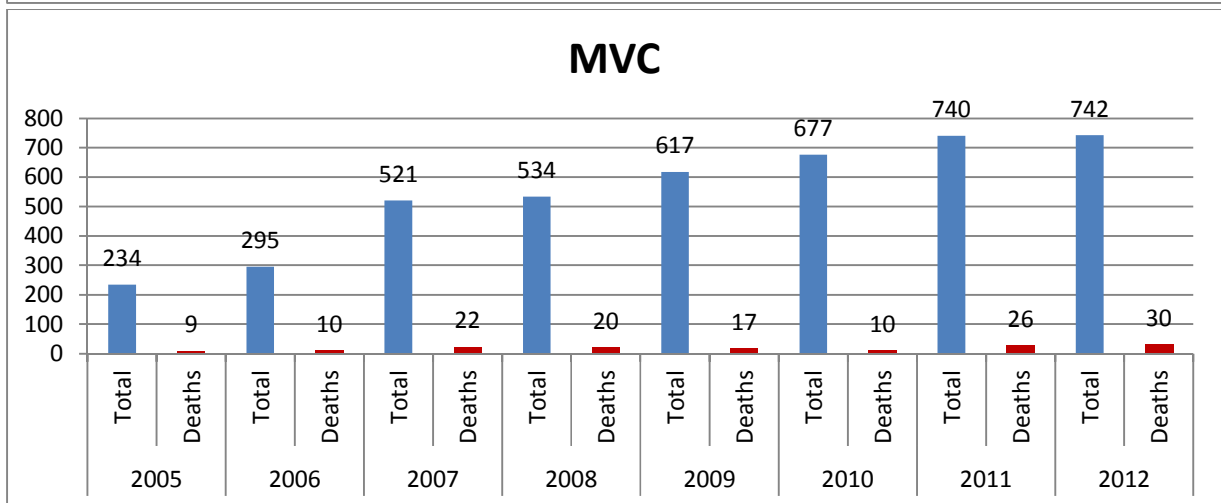
**Figure 32**



**Figure 33**



**Figure 34**



**Table 13** Trauma Registry Records Ages 35 to 64 Years  
**Definitive Trauma Registry Records, New Mexico**  
**2005 – 2012**

**TOTAL Ages 35 to 64 Years by Year and ISS**

YEAR	ISS 1-8	ISS 9	ISS 10-15	ISS 16-24	ISS >=25	Unknown	Grand Total
2005	611	251	231	172	128		1393
2006	689	349	197	196	184		1615
2007	832	530	231	203	187		1983
2008	1065	379	250	220	165	3	2082
2009	1262	411	280	280	195	2	2430
2010	1452	433	290	260	158		2593
2011	1367	451	327	239	142	17	2543
2012	1396	397	300	220	118	18	2449
<b>Grand Total</b>	<b>8674</b>	<b>3201</b>	<b>2106</b>	<b>1790</b>	<b>1277</b>	<b>40</b>	<b>17088</b>

**Deaths Ages 35 to 64 Years by Year and ISS**

YEAR	ISS 1-8	ISS 9	ISS 10-15	ISS 16-24	ISS >=25	Unknown	Grand Total
2005	1	1	5	9	23		39
2006		3		4	41		48
2007	3	3	3	3	36		48
2008	1	2	4	9	30		46
2009	2	1	1	7	32		43
2010	4	3	2	3	25		37
2011	4	8	3	7	37	1	60
2012	3	7	6	9	33	1	59
<b>Grand Total</b>	<b>18</b>	<b>28</b>	<b>24</b>	<b>51</b>	<b>257</b>	<b>2</b>	<b>380</b>

**Percent of DTRRs with a Death Ages 35 to 64 Years**

YEAR	ISS 1-8	ISS 9	ISS 10-15	ISS 16-24	ISS >=25	Unknown	Grand Total
2005	0.2%	0.4%	2.2%	5.2%	18.0%	0.0%	2.8%
2006	0.0%	0.9%	0.0%	2.0%	22.3%	0.0%	3.0%
2007	0.4%	0.6%	1.3%	1.5%	19.3%	0.0%	2.4%
2008	0.1%	0.5%	1.6%	4.1%	18.2%	0.0%	2.2%
2009	0.2%	0.2%	0.4%	2.5%	16.4%	0.0%	1.8%
2010	0.3%	0.7%	0.7%	1.2%	15.8%	0.0%	1.4%
2011	0.3%	1.8%	0.9%	2.9%	26.1%	5.9%	2.4%
2012	0.2%	1.8%	2.0%	4.1%	28.0%	5.6%	2.4%
<b>Grand Total</b>	<b>0.2%</b>	<b>0.9%</b>	<b>1.1%</b>	<b>2.8%</b>	<b>20.1%</b>	<b>5.0%</b>	<b>2.2%</b>

# **Ages Greater than 64 Years**

Table 14

**Trauma Registry Records by Ages Greater Than 64 Years**  
**Definitive Trauma Registry Records, New Mexico**  
**2005 - 2012**

**TOTAL**

Cause of Injury	2005	2006	2007	2008	2009	2010	2011	2012	Grand Total
Falls	217	425	718	867	916	890	1400	1480	6913
Fire/Burn	1	5	9	11	12	19	21	11	89
GSW	1	1	4	3	4	1	8	7	29
Machinery	2	12	7	7	9	8	8	3	56
MVC	59	71	123	129	148	210	217	214	1171
Other Assault		4	1	3	4	1	1		14
Other Cause	11	12	26	14	16	16	18	20	133
Stabbing		4	6	10	6	3	12	7	48
Struck By/Against	4	7	17	10	22	17	33	33	143
Unknown	89	148	14	14	2		3	5	275
<b>Grand Total</b>	<b>384</b>	<b>689</b>	<b>925</b>	<b>1068</b>	<b>1139</b>	<b>1165</b>	<b>1721</b>	<b>1780</b>	<b>8871</b>

**Deaths Ages Greater Than 64 Years**

Cause of Injury	2005	2006	2007	2008	2009	2010	2011	2012	Grand Total
Falls	17	29	52	60	56	50	59	39	362
Fire/Burn			2	3		3	3	1	12
GSW			2	1	2		4	2	11
MVC	6	6	15	14	9	10	9	18	87
Other Assault			1						1
Other Cause			1						1
Stabbing				1	1		1		3
Struck By/Against			1			4	1	2	8
Unknown	15	22	1	1	1				40
<b>Grand Total</b>	<b>38</b>	<b>57</b>	<b>75</b>	<b>80</b>	<b>69</b>	<b>67</b>	<b>77</b>	<b>62</b>	<b>525</b>

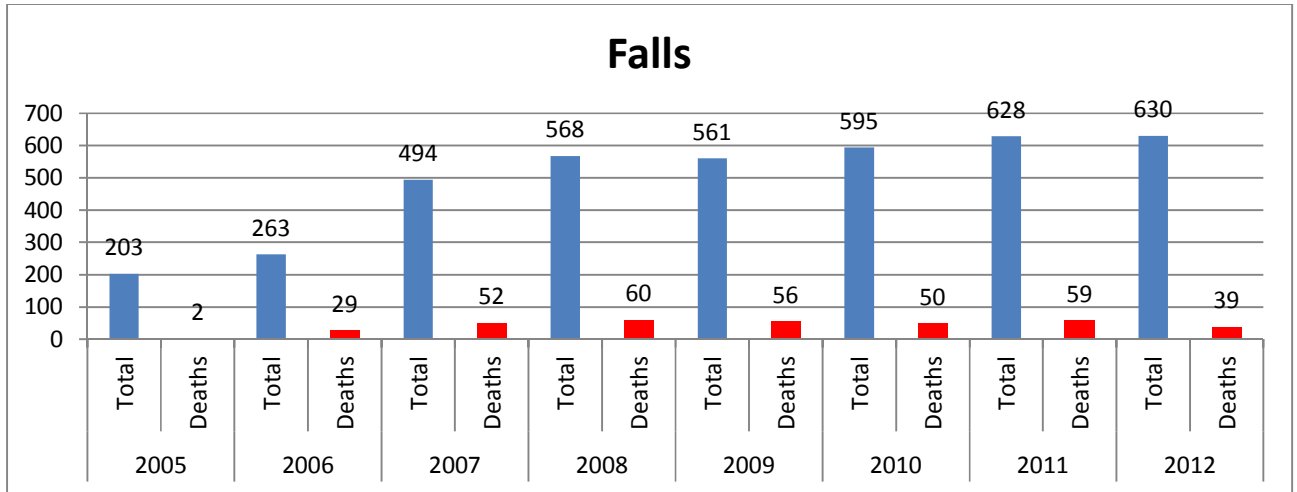
**Percent of DTRRs with a Death Ages Greater Than 64 Years**

Cause of Injury	2005	2006	2007	2008	2009	2010	2011	2012	Grand Total
Falls	7.8%	6.8%	7.2%	6.9%	6.1%	5.6%	4.2%	2.6%	5.2%
Fire/Burn	0.0%	0.0%	22.2%	27.3%	0.0%	15.8%	14.3%	9.1%	13.5%
GSW	0.0%	0.0%	50.0%	33.3%	50.0%	0.0%	50.0%	28.6%	37.9%
MVC	10.2%	8.5%	12.2%	10.9%	6.1%	4.8%	4.1%	8.4%	7.4%
Other Assault	0.0%	0.0%	100.0%	0.0%	0.0%	0.0%	0.0%	0.0%	7.1%
Other Cause	0.0%	0.0%	3.8%	0.0%	0.0%	0.0%	0.0%	0.0%	0.8%
Stabbing	0.0%	0.0%	0.0%	10.0%	16.7%	0.0%	8.3%	0.0%	6.3%
Struck By/Against	0.0%	0.0%	5.9%	0.0%	0.0%	23.5%	3.0%	6.1%	5.6%
Unknown	16.9%	14.9%	7.1%	7.1%	50.0%	0.0%	0.0%	0.0%	14.5%
<b>Grand Total</b>	<b>9.9%</b>	<b>8.3%</b>	<b>8.1%</b>	<b>7.5%</b>	<b>6.1%</b>	<b>5.8%</b>	<b>4.5%</b>	<b>3.5%</b>	<b>5.9%</b>

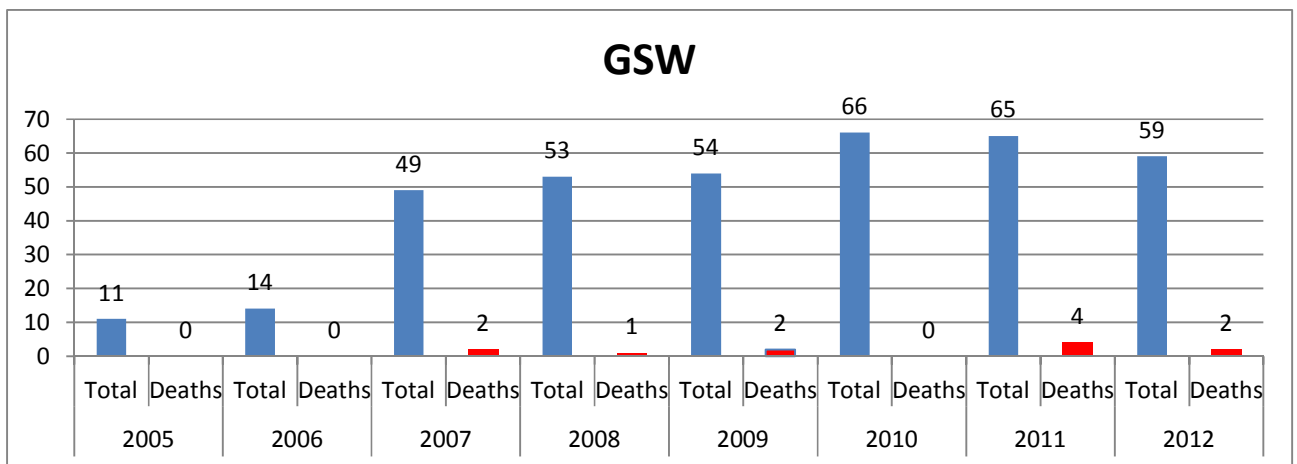
**Figures  
35 - 37**

**Trauma Registry Records Ages Greater Than 64 Years  
Definitive Trauma Registry Records, New Mexico  
2005 - 2012**

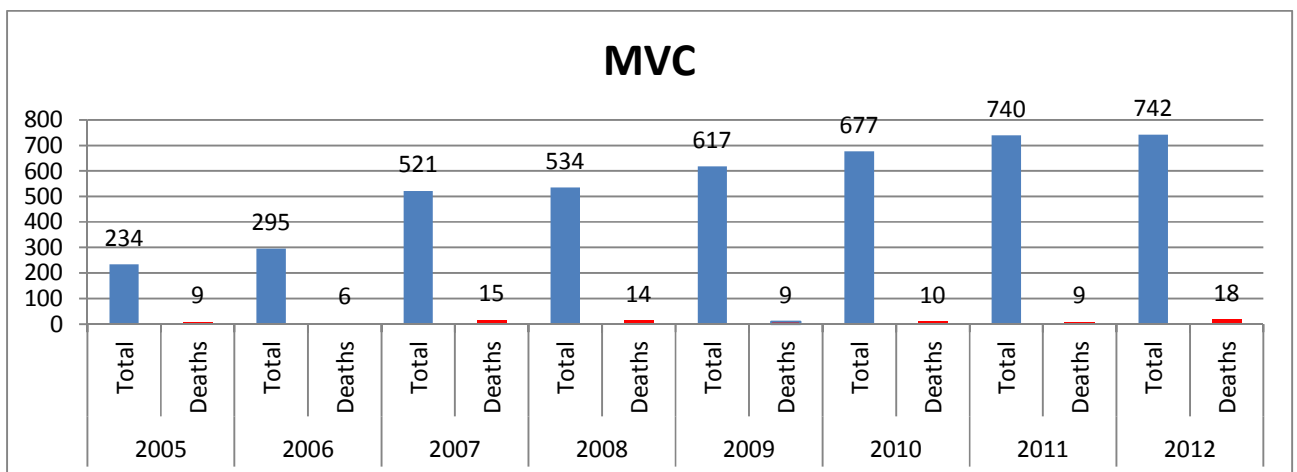
**Figure 35**



**Figure 36**



**Figure 37**



**Table 15** Trauma Registry Records by Ages Greater Than 64 Years  
**Definitive Trauma Registry Records, New Mexico**  
**2005 – 2012**

**TOTAL Ages Greater Than 64 Years Years by Year and ISS**

YEAR	ISS 1-8	ISS 9	ISS 10-15	ISS 16-24	ISS >=25	Unknown	Grand Total
2005	196	222	61	77	40	1	597
2006	356	507	99	109	64	6	1141
2007	550	1075	156	107	73	3	1964
2008	691	1064	216	131	80		2182
2009	813	1037	264	141	114	2	2371
2010	860	982	264	157	82	3	2348
2011	918	1139	303	120	73	9	2562
2012	882	994	229	111	57	12	2285
<b>Grand Total</b>	<b>5266</b>	<b>7020</b>	<b>1592</b>	<b>953</b>	<b>583</b>	<b>36</b>	<b>15450</b>

**Deaths Ages Greater Than 64 Years**

YEAR	ISS 1-8	ISS 9	ISS 10-15	ISS 16-24	ISS >=25	Unknown	Grand Total
2005	4	8	1	8	17		38
2006	6	10		13	28		57
2007	7	27	5	9	28		76
2008	15	27	4	9	25		80
2009	7	27	4	6	25		69
2010	11	24	8	6	18		67
2011	13	30	11	9	14		77
2012	9	24	6	7	16		62
<b>Grand Total</b>	<b>72</b>	<b>177</b>	<b>39</b>	<b>67</b>	<b>171</b>		<b>526</b>

**Percent of DTRRs with a Death Ages Greater Than 64 Years**

YEAR	ISS 1-8	ISS 9	ISS 10-15	ISS 16-24	ISS >=25	Unknown	Grand Total
2005	2.0%	3.6%	1.6%	10.4%	42.5%	0.0%	6.4%
2006	1.7%	2.0%	0.0%	11.9%	43.8%	0.0%	5.0%
2007	1.3%	2.5%	3.2%	8.4%	38.4%	0.0%	3.9%
2008	2.2%	2.5%	1.9%	6.9%	31.3%	0.0%	3.7%
2009	0.9%	2.6%	1.5%	4.3%	21.9%	0.0%	2.9%
2010	1.3%	2.4%	3.0%	3.8%	22.0%	0.0%	2.9%
2011	1.4%	2.6%	3.6%	7.5%	19.2%	0.0%	3.0%
2012	1.0%	2.4%	2.6%	6.3%	28.1%	0.0%	2.7%
<b>Grand Total</b>	<b>1.4%</b>	<b>2.5%</b>	<b>2.4%</b>	<b>7.0%</b>	<b>29.3%</b>	<b>0.0%</b>	<b>3.4%</b>



**Conclusion**

Analyses of trauma registry deaths from 2005 – 2012 do not provide any evidence of a decrease in mortality rates over time. While the percentages of DTRRs with a death has decreased over time, this is due to an increase in DTRRs with low ISS's.