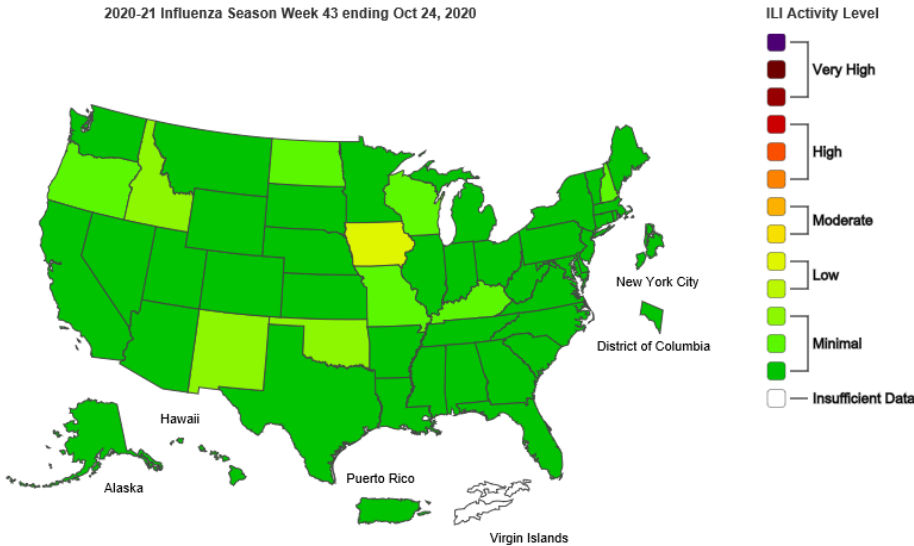


# New Mexico Department of Health Influenza & Respiratory Disease Report, 2020-2021

2020-21 Influenza Season Week 43 ending Oct 24, 2020



New Mexico is experiencing Minimal ILI activity\*

Please visit <https://cv.nmhealth.org> for  
COVID-19 Weekly Epidemiology Reports

## Summary of Activity: Week 43 October 18<sup>th</sup> – October 24<sup>th</sup>, 2020

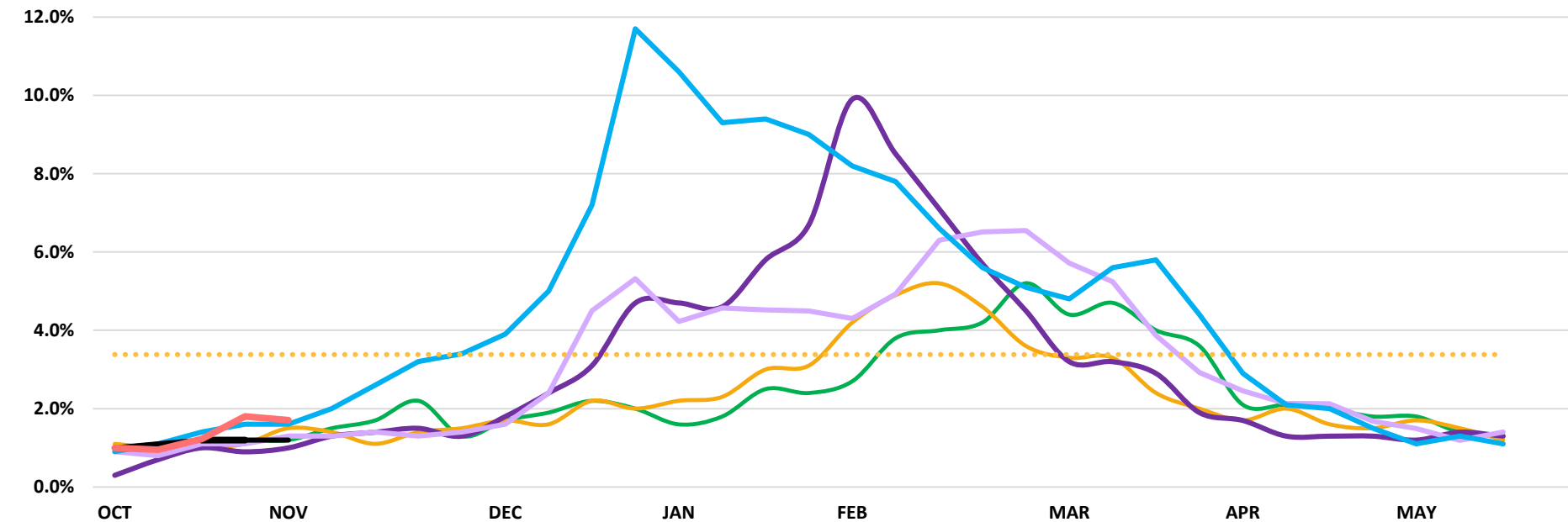
- New Mexico influenza-like illness (ILI) activity is currently 1.7% of patient visits
- Influenza activity is below the NM ILI baseline of 3.4% in all five health regions
- US ILI is 1.2%, which is below the national ILI baseline of 2.6%
- No influenza outbreaks were reported this week in any of the five health regions
- Visit [CDC FluView](https://www.cdc.gov/fluview/) for the national ILI report

\*The CDC has suspended the use of the map showing geographic spread of ILI this season. Activity Map from <https://www.cdc.gov/flu/weekly/index.htm>

# Influenza-Like Illness (ILI) Activity, 2015 to Present

New Mexico Department of Health (NMDOH) is collaborating with 21 ILI sentinel sites and 30 syndromic surveillance sites\* for the 2020-2021 season. Sites report weekly on the number of patients that present to their facility with influenza-like illness (ILI). That number is then divided by the total number of patients seen for any reason, resulting in percent of ILI activity. ILI is defined as fever of greater than or equal to 100° F and cough and/or sore throat without a known cause other than influenza.

## New Mexico and U.S. ILI Activity, 2015 to Present



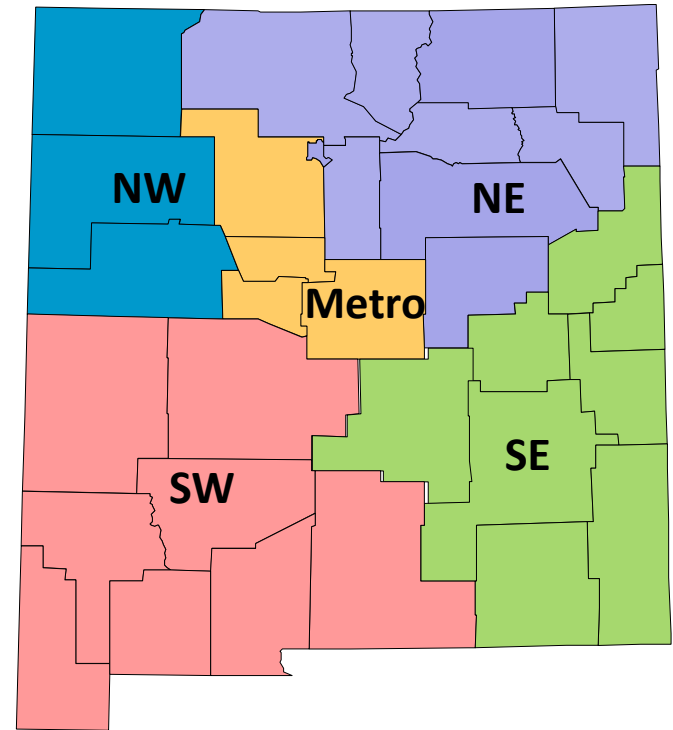
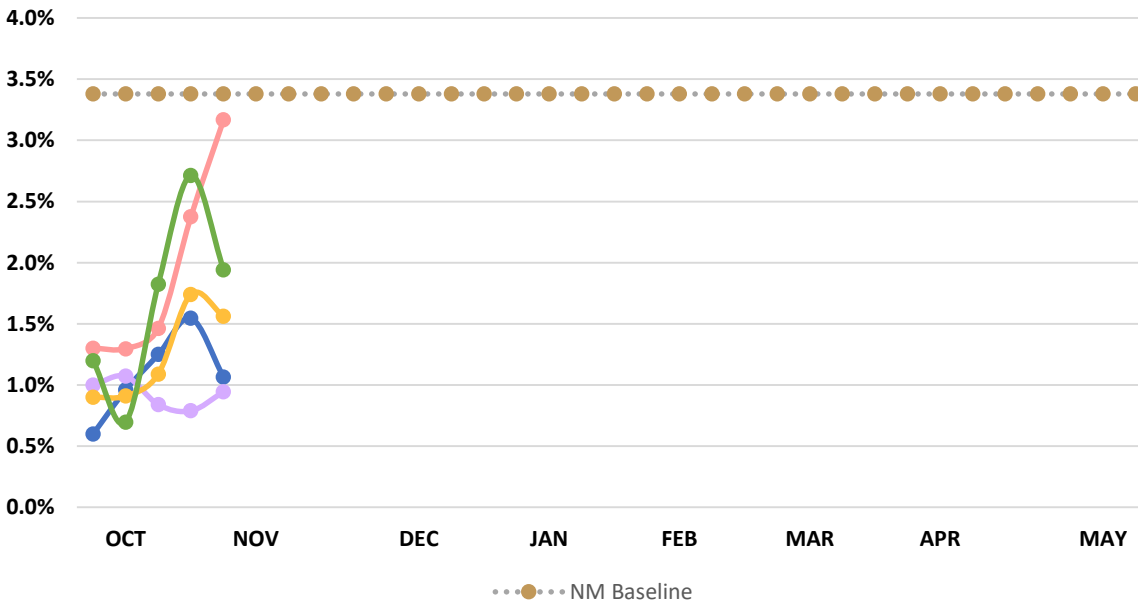
|  |  |   |   |
|--|--|---|---|
| <span style="color: green;">—</span> 2015-16 NM  | <span style="color: orange;">—</span> 2016-2017 NM | <span style="color: purple;">—</span> 2017-2018 NM                | <span style="color: lightpurple;">—</span> 2018-2019 NM |
| <span style="color: blue;">—</span> 2019-2020 NM | <span style="color: black;">—</span> 2020-2021 US  | <span style="color: dottedorange;">⋯</span> NM Baseline 2020-2021 | <span style="color: red;">—</span> 2020-2021 NM         |

|  |   |   |
|--|---|---|
| <b>% ILI, NM, Week 43</b><br><b>October 18<sup>th</sup> – October 24<sup>th</sup>, 2020</b><br><b>(current week)</b> | <b>% ILI, NM, Week 42</b><br><b>October 11<sup>th</sup> – October 17<sup>th</sup>, 2020</b><br><b>(previous week)</b> | <b>% ILI, United States, Week 43</b><br><b>October 18<sup>th</sup> – October 24<sup>th</sup>, 2020</b><br><b>(current week)</b> |
| 1.7%   | 1.8%  | 1.2%  |

\* See appendix for reporting sites

# Regional Influenza-Like Illness (ILI) Activity, 2020-2021

## NM ILI Activity by Health Region, 2020-2021



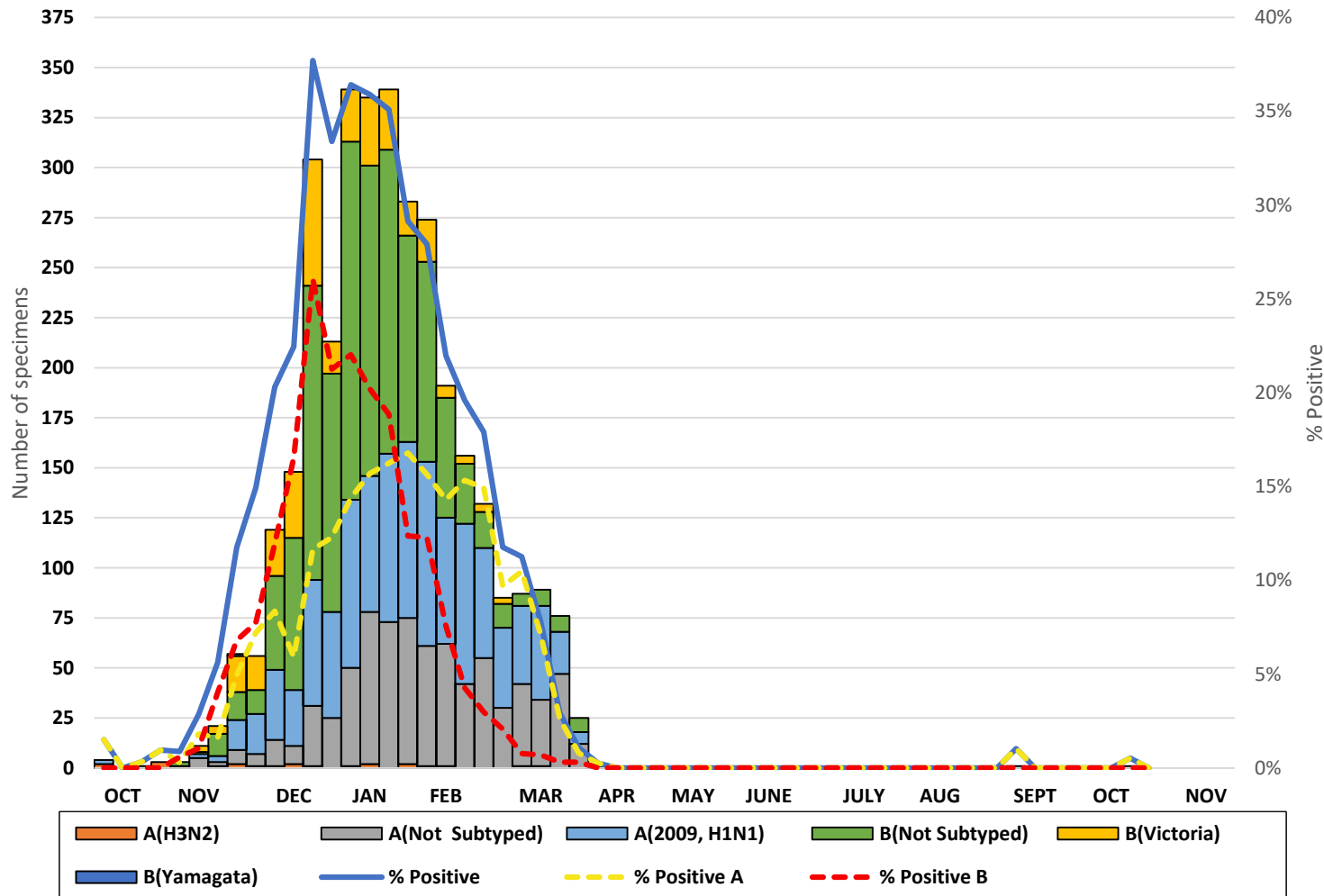
| Region | This Week | Last Week | Outbreaks | +PCR testing at SLD |
|--------|-----------|-----------|-----------|---------------------|
| NW     | 1.1%      | 1.5%      | No        | No                  |
| NE     | 0.9%      | 0.8%      | No        | No                  |
| Metro  | 1.6%      | 1.7%      | No        | No                  |
| SW     | 3.2%      | 2.4%      | No        | No                  |
| SE     | 1.9%      | 2.7%      | No        | Yes                 |

**Outbreak:** An influenza outbreak is defined as at least two cases of ILI in a congregate residential care setting with at least one laboratory confirmed case.

**PCR Testing:** Polymerase Chain Reaction (PCR) tests can identify the presence of influenza viral RNA in respiratory specimens. PCR testing is performed at various laboratories across New Mexico.

# Laboratory Data & Virologic Surveillance, 2020-2021

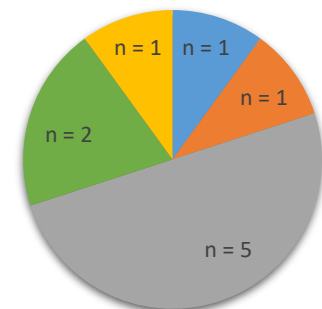
PCR Positive Results among Hospital/Clinical Sites and Scientific Laboratory Division, October 2019 - October 2020



NM subtyping performed at SLD\*\*

No positive Flu specimens at SLD during week 43.

U.S. virus characterization performed at CDC\*\*



2020-2021 US

\*\* Pie chart data and bar graph data are populated from two separate sources. Therefore, not equivalent

\*\*\*There was a false positive Flu B during week 42. The positive case had received an influenza vaccination the day before testing. This result was excluded from the counts.

# RSV and Rapid Influenza Laboratory Data\*, 2020-2021



| Laboratory Sites Participating in Rapid Influenza Data Collection<br>(Facility name, City) |  | Laboratory Sites Participating in RSV Data Collection<br>(Facility name, City)   |  |
|--|--|--|--|
| <b>NW</b>  | San Juan Regional Medical Center, Farmington; Northern Navajo Medical Center, Shiprock; Cibola General Hospital, Grants; Crownpoint IHS, Crownpoint; Gallup Indian Medical Center, Gallup; Rehoboth McKinley Christian Hospital, Gallup; | San Juan Regional Medical Center, Farmington; Cibola General Hospital, Grants; Crownpoint IHS, Crownpoint; Gallup Indian Medical Center, Gallup; Rehoboth McKinley Christian Hospital, Gallup; |  |
| <b>NE</b>  | Los Alamos Medical Center, Los Alamos; Christus St. Vincent's Hospital, Santa Fe   | Los Alamos Medical Center, Los Alamos; Christus St. Vincent's Hospital, Santa Fe   |  |
| <b>Metro</b>   | New Mexico Veterans Affairs Medical Center, Albuquerque; Sandia National Labs, Albuquerque   |  |  |
| <b>SW</b>  | Gila Regional Medical Center, Silver City; Gerald Champion Regional Medical Center, Alamogordo; Mimbres Memorial Hospital, Deming  | Gerald Champion Regional Medical Center, Alamogordo  |  |
| <b>SE</b>  | Carlsbad Medical Center, Carlsbad; Lea Regional Medical Center, Hobbs; Roosevelt General Hospital Clinic, Portales; Artesia General Hospital, Artesia;   | Carlsbad Medical Center, Carlsbad; Lea Regional Medical Center, Hobbs; Artesia General Hospital, Artesia;  |  |

# Influenza Hospitalizations, NM & US, 2020-2021

Hospitalization data for this season  
not yet being reported

## Pneumonia and Influenza (P & I) Deaths, NM, 2017-2021\*

| Season    | Pneumonia (P) Deaths | Adult Influenza (I) Deaths | Pediatric Influenza Deaths | Total P & I Deaths |
|-----------|----------------------|----------------------------|----------------------------|--------------------|
| 2020-2021 | 0                    | 0                          | 0                          | 0                  |
| 2019-2020 | 187                  | 62                         | 5                          | 254                |
| 2018-2019 | 178                  | 57                         | 2                          | 237                |
| 2017-2018 | 222                  | 67                         | 3                          | 292                |

**Pneumonia death:** Is defined as having a cause of death that is related to pneumonia & influenza (P & I) not including: aspiration pneumonia, pneumonitis, or pneumococcal meningitis.

**Influenza death:** Is defined as having a cause of death that is related to pneumonia & influenza (P & I) not including: parainfluenzae or Haemophilus *influenzae*.

\* Death data is delayed up to 8 weeks

# Influenza Vaccination Information

## Still Need to Get Your Flu Shot?

HealthMap Vaccine Finder:

<http://vaccine.healthmap.org/>

Or

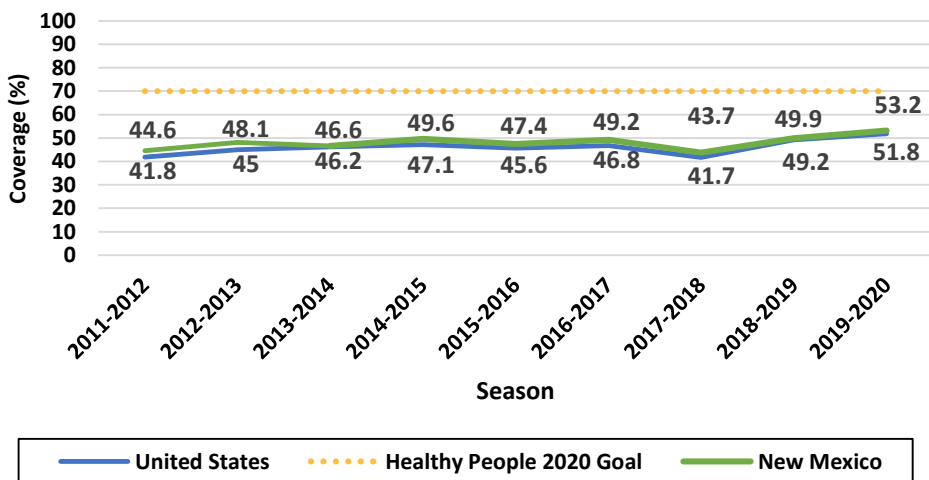
Contact your Primary Care Provider (PCP) or a local public health office (LPHO) near you:

<https://nmhealth.org/location/public/>

“Influenza is a serious disease that can lead to hospitalization and sometimes even death. Every flu season is different, and influenza infection can affect people differently, but millions of people get the flu every year, hundreds of thousands of people are hospitalized and thousands or tens of thousands of people die from flu-related causes every year. Even healthy people can get very sick from the flu and spread it to others. Flu-related hospitalizations since 2010 ranged from 140,000 to 710,000, while flu-related deaths are estimated to have ranged from 12,000 to 56,000. During flu season, flu viruses circulate at higher levels in the U.S. population in the United States can begin as early as October and last as late as May. An annual seasonal flu vaccine is the best way to reduce your risk of getting sick with seasonal flu and spreading it to others. When more people get vaccinated against the flu, less flu can spread through that community.”

-Centers for Disease Control and Prevention

## New Mexico and National Vaccination Coverage by Season, Age >6 Months, 2010-2020



## For Additional Vaccine Information/resources:

FluVaxView:

<https://www.cdc.gov/flu/fluvoxview/index.htm>

Seasonal Influenza Vaccination Resources for Health Professionals:

<https://www.cdc.gov/flu/professionals/vaccination/index.htm>

Misconceptions about Flu Vaccines:

<https://www.cdc.gov/flu/about/qa/misconceptions.htm>

# Appendix

| Health Region    | Participating Sentinel Sites<br>(Facility name, City)  | Syndromic Surveillance Hospitals<br>(Facility name, City)  |
|------------------|--|--|
| <b>Northwest</b> | Acoma-Canoncito-Laguna Indian Health Services, Acoma; Dzilth Indian Health Services, Bloomfield  | San Juan Regional Medical Center, Farmington; Cibola General Hospital, Grants  |
| <b>Northeast</b> | Taos-Picuris Indian Health Services, Taos; Pecos Valley Medical Center, Pecos; Jicarilla Apache Indian Health Services, Dulce; Children's Clinic PA, Los Alamos;   | Alta Vista Regional Hospital, Las Vegas; Christus St. Vincent, Santa Fe; Los Alamos Medical Center, Los Alamos; Miners' Colfax Medical Center, Raton; Union County General Hospital, Clayton; Guadalupe County Hospital, Santa Rosa; Presbyterian Hospital, Espanola   |
| <b>Metro</b>     | University of New Mexico Student Health Clinic, Albuquerque; Presbyterian Medical Group-Atrisco, Northside, Carmel Pediatric Urgent Care, Las Estancias Pediatric Urgent Care; DaVita Urgent Care, Journal Center  | Lovelace Westside Hospital, Downtown Medical Center and Women's Hospital, Albuquerque; UNM Health System, Albuquerque & Rio Rancho; Presbyterian Hospital, Kaseman and Rust Medical Center, Albuquerque & Rio Rancho; UNM Sandoval Regional Medical Center, Rio Rancho   |
| <b>Southwest</b> | Gila Regional Medical Center, Silver City; Ben Archer Health Centers – Dona Ana, Deming, Columbus; Hidalgo Medical Services, Lordsburg; La Clinica de Familia, Sunland Park; La Clinica de Familia, Santa Teresa School Based Clinic, Santa Teresa; Mescalero Apache Indian Health Hospital, Mescalero | Mimbres Memorial Hospital, Deming; Mountain View Regional Medical Center, Las Cruces; Socorro General Hospital, Socorro; Gerald Champion Regional Medical Center, Alamogordo   |
| <b>Southeast</b> | Roosevelt General Hospital Clinic, Portales;   | Carlsbad Medical Center, Carlsbad; Eastern New Mexico Medical Center, Roswell; Lea Regional Medical Center, Hobbs; Artesia General Hospital, Artesia; Dan C Trigg Memorial Hospital, Tucumcari; Lincoln County Medical Center, Ruidoso; Lovelace Regional Hospital, Roswell; Nor-Lea Hospital District, Lovington; Plains Regional Medical Center, Clovis; |

**In accordance with New Mexico Administrative Code (NMAC) 7.4.3.13 Influenza is a reportable condition for the following:**

- Influenza, laboratory confirmed hospitalizations only
- Influenza-associated pediatric death
- Acute illness or condition of any type involving large numbers of persons in the same geographic area (outbreaks)
- Other illnesses or condition of public health significance (novel influenza A)

**For more information on reportable conditions please visit:**

<http://164.64.110.134/parts/title07/07.004.0003.html>

Found at the New Mexico State Records Center and Archives - Commission for Public Records



Report published by New Mexico Department of Health (NMDOH), Epidemiology and Response Division (ERD) Infectious Disease Epidemiology Bureau (IDEB)  
 For questions, please call 505-827-0006. For more information on influenza go to the NMDOH web page: <https://nmhealth.org/about/erd/ideb/isp/> Or The CDC web page: <http://www.cdc.gov/flu/index.htm>