

# New Mexico Department of Health Influenza & Respiratory Disease Report, 2017-2018

A Summary of Influenza and RSV Surveillance in New Mexico

## New Mexico Influenza Geographic Spread\*

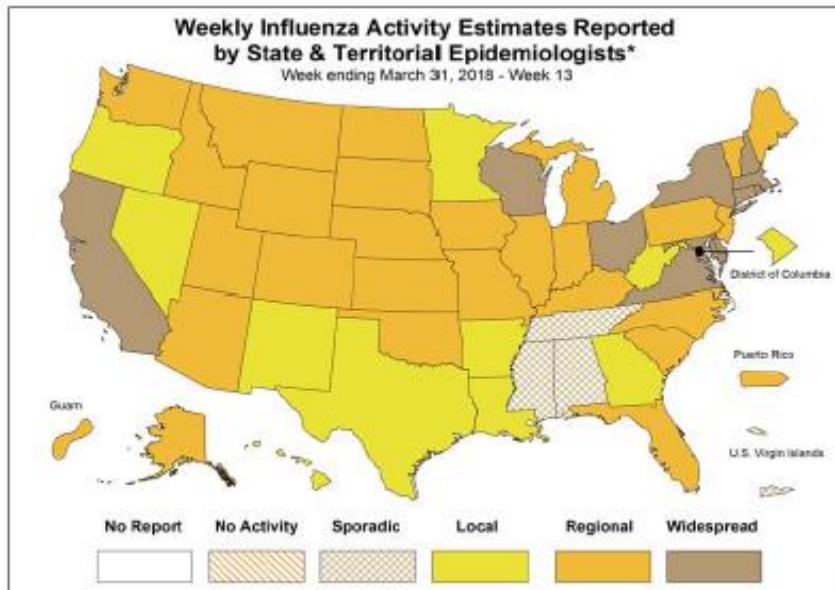
No Activity

Sporadic

Local

Regional

Widespread



\* This map indicates geographic spread & does not measure the severity of influenza activity

## Summary of Activity: Week 13 March 25<sup>th</sup> – March 31<sup>st</sup>, 2018

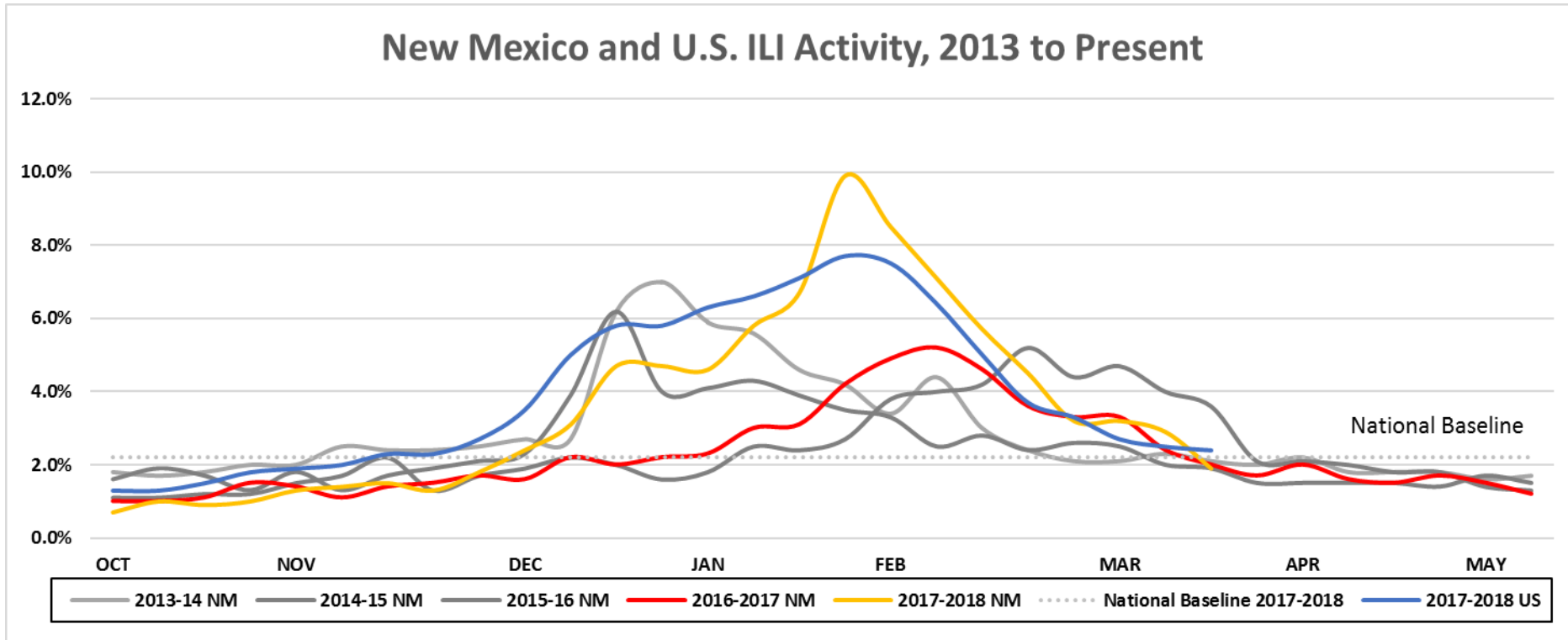
- New Mexico ILI activity is currently 1.9% which is below the national baseline of 2.2%
- US ILI is 2.4% which is above the national baseline of 2.2%
- Influenza activity is above the NM baseline of 2.6% in one of five health regions
- There was PCR confirmed lab activity from the Scientific Laboratory Division (SLD) three of five New Mexico health regions
- No new influenza outbreak were reported this week

## Table of Contents

- Influenza-Like Illness (ILI) ..... 2
- Regional ILI ..... 3
- Laboratory Data ..... 4-6
- Hospitalization and Death Data ..... 7
- Prevention and Control ..... 8
- Appendix & Resources ..... 9

# Influenza-Like Illness (ILI) Activity, 2013 to Present

New Mexico Department of Health (NMDOH) is collaborating with 25 ILI sentinel sites and 19 syndromic surveillance sites\* for the 2017-2018 season. Sites report weekly on the number of patients that present to their facility with influenza-like illness (ILI). That number is then divided by the total number of patients seen for any reason, resulting in percent of ILI activity. ILI is defined as fever of > 100° F and cough and sore throat in absence of known cause.

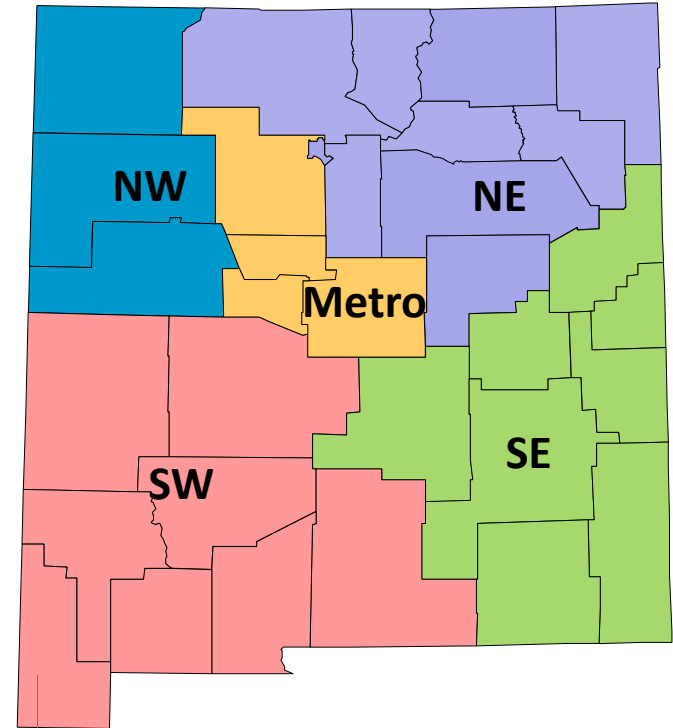
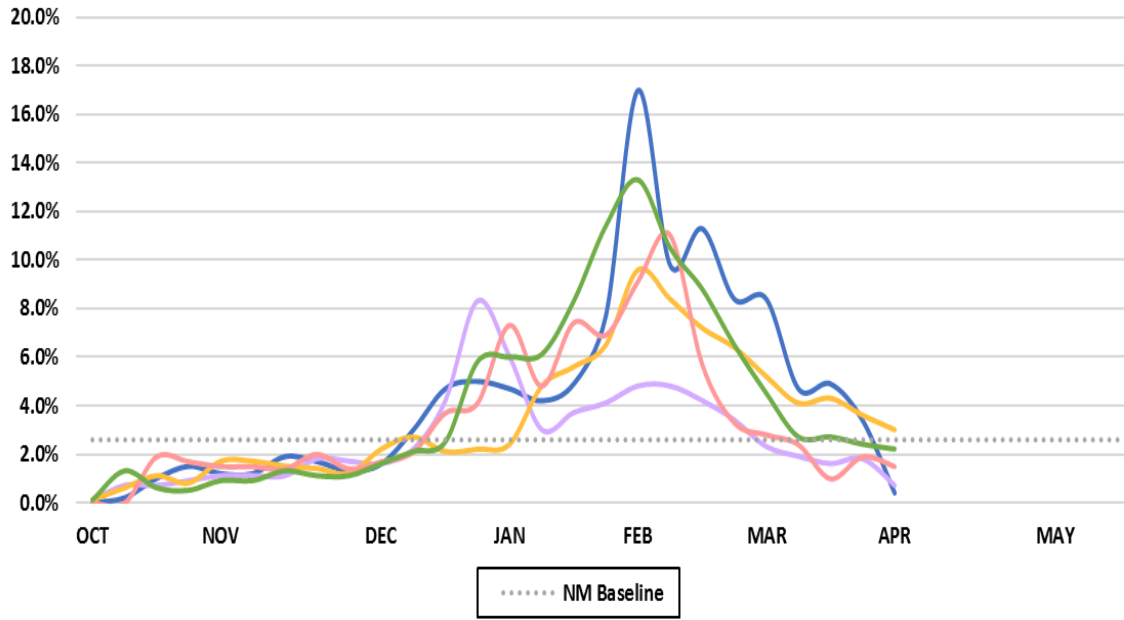


% ILI, NM, Week 13 Mar 25 <sup>th</sup> – Mar 31 <sup>st</sup> , 2018 (current Week)	% ILI, NM, Week 12 Mar 18 <sup>th</sup> – Mar 24 <sup>th</sup> , 2018 (previous week)	% ILI, United States, Week 12 Mar 25 <sup>th</sup> – Mar 31 <sup>st</sup> , 2018 (current week)
1.9%	2.9%	2.4%

\* See appendix for reporting sites

# Regional Influenza-Like Illness (ILI) Activity

NM ILI Activity by Health Region, 2017-2018



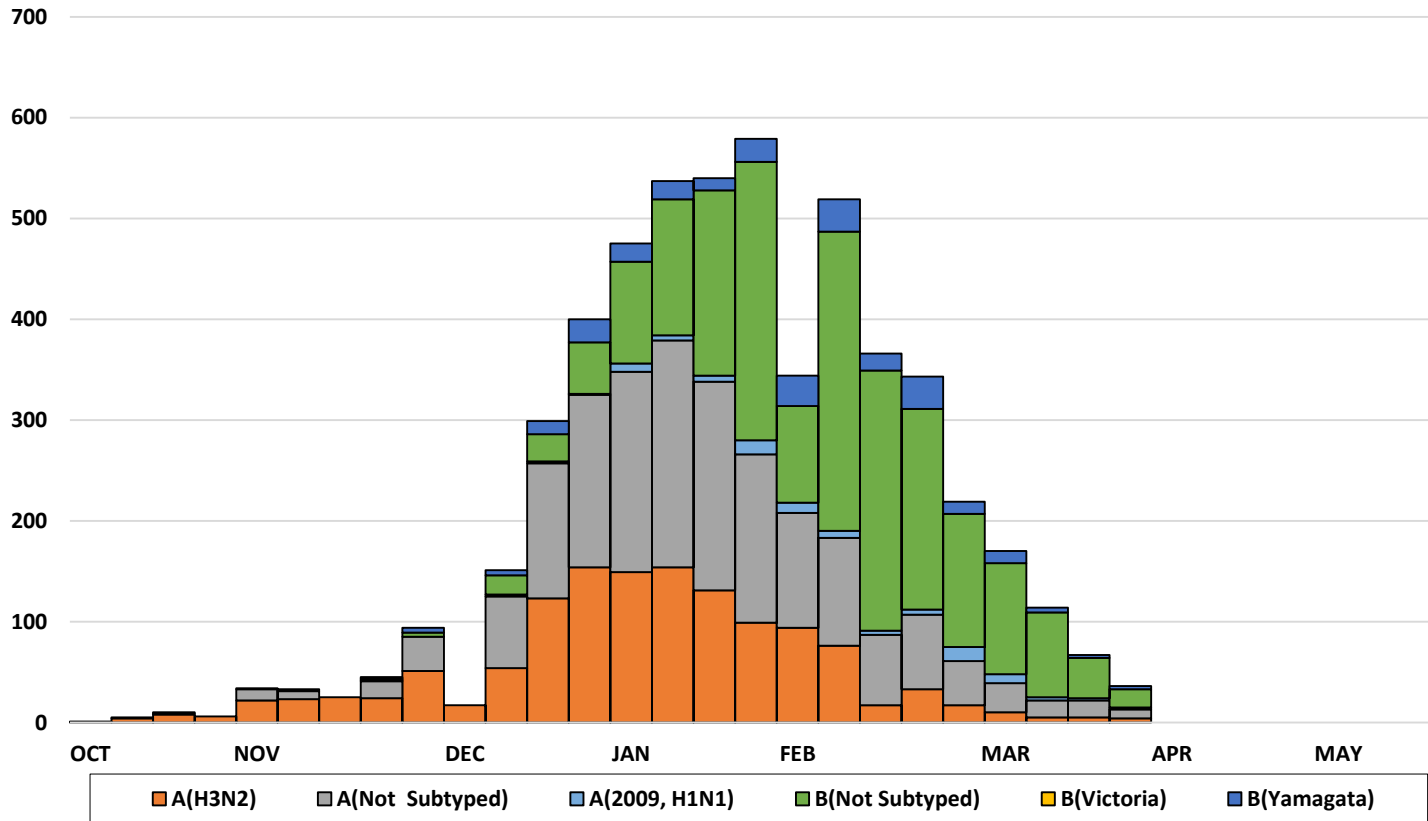
Region	This Week	Last Week	Outbreaks	+PCR testing at SLD
NW	0.4%	3.4%	No	No
NE	0.7%	1.8%	No	Yes
Metro	3.0%	3.6%	No	Yes
SW	1.5%	1.9%	No	Yes
SE	2.2%	2.4%	No	No

**Outbreak:** An influenza outbreak is defined as at least two cases of ILI in a specific area with at least one lab confirmed case.

**PCR Testing:** Polymerase Chain Reaction (PCR) tests can identify the presence of influenza viral RNA in respiratory specimens. PCR testing is performed at various laboratories across New Mexico.

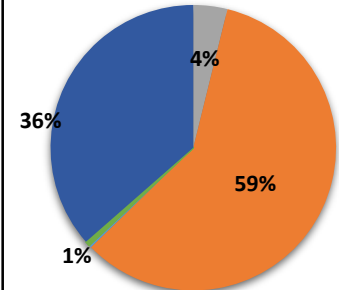
# Laboratory Data & Virologic Surveillance, 2017-2018

PCR Positive Results among Hospital/Clinical Sites and Scientific Laboratory Division, 2017-2018

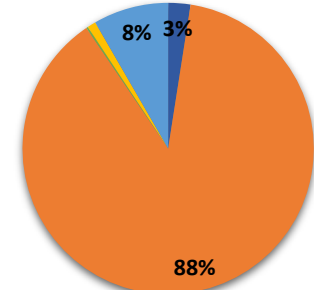


Since the start of the 2017-2018 influenza season, laboratories have reported that a total of 5,429 out of 25,730 respiratory specimens have tested positive for influenza by PCR. Ninety-five specimens were subtyped as A(H1N1), 1,305 were A(H3N2), 1,728 influenza A specimens were not subtyped. For influenza B specimens, 2,035 specimens tested positive as influenza B not subtyped, 0 positive specimens were identified as B(Victoria) and 266 as B(Yamagata).

NM subtyping performed at SLD\*\*

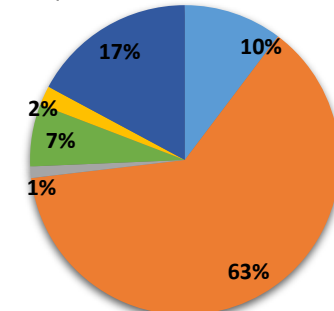


2017-2018 NM



2016-2017 NM

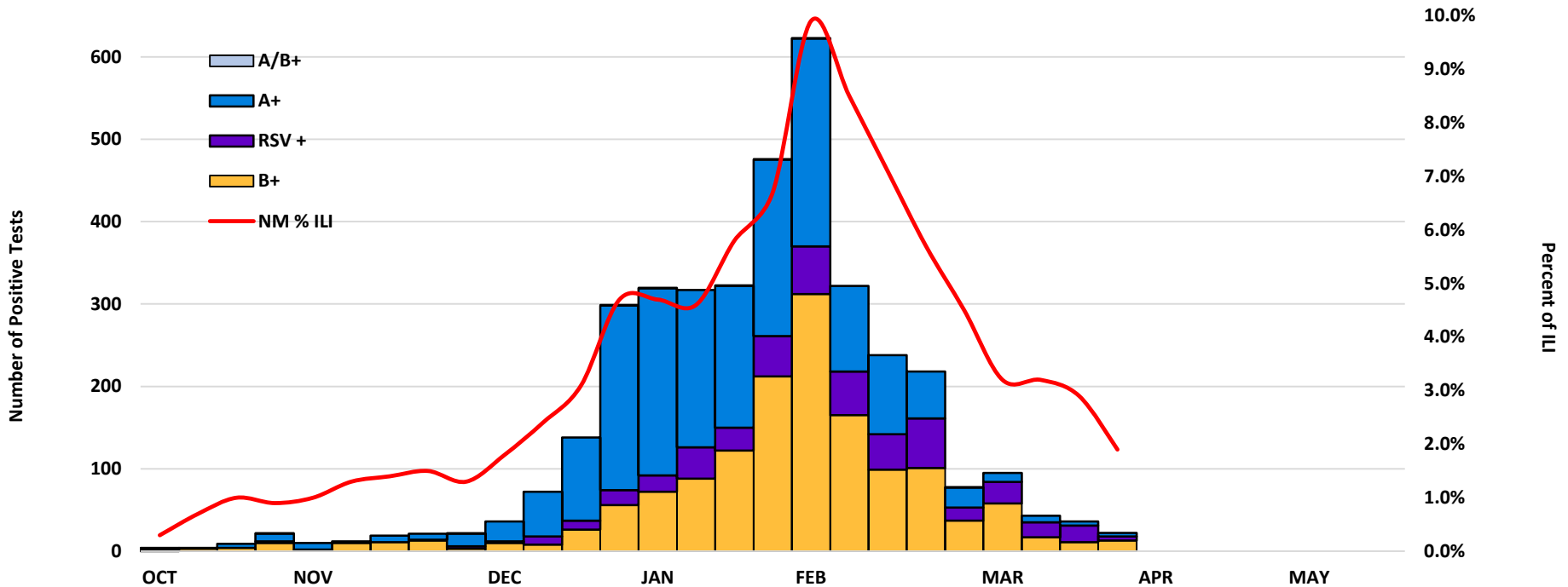
U.S. virus characterization performed at CDC\*\*



2017-2018 US <sup>4</sup>

\*\* Pie chart data and bar graph data are populated from two separate sources. Therefore, not equivalent

# RSV and Rapid Influenza Laboratory Data\*, 2017-2018



## Laboratory Sites Participating in Rapid influenza Data Collection (Facility name, City)

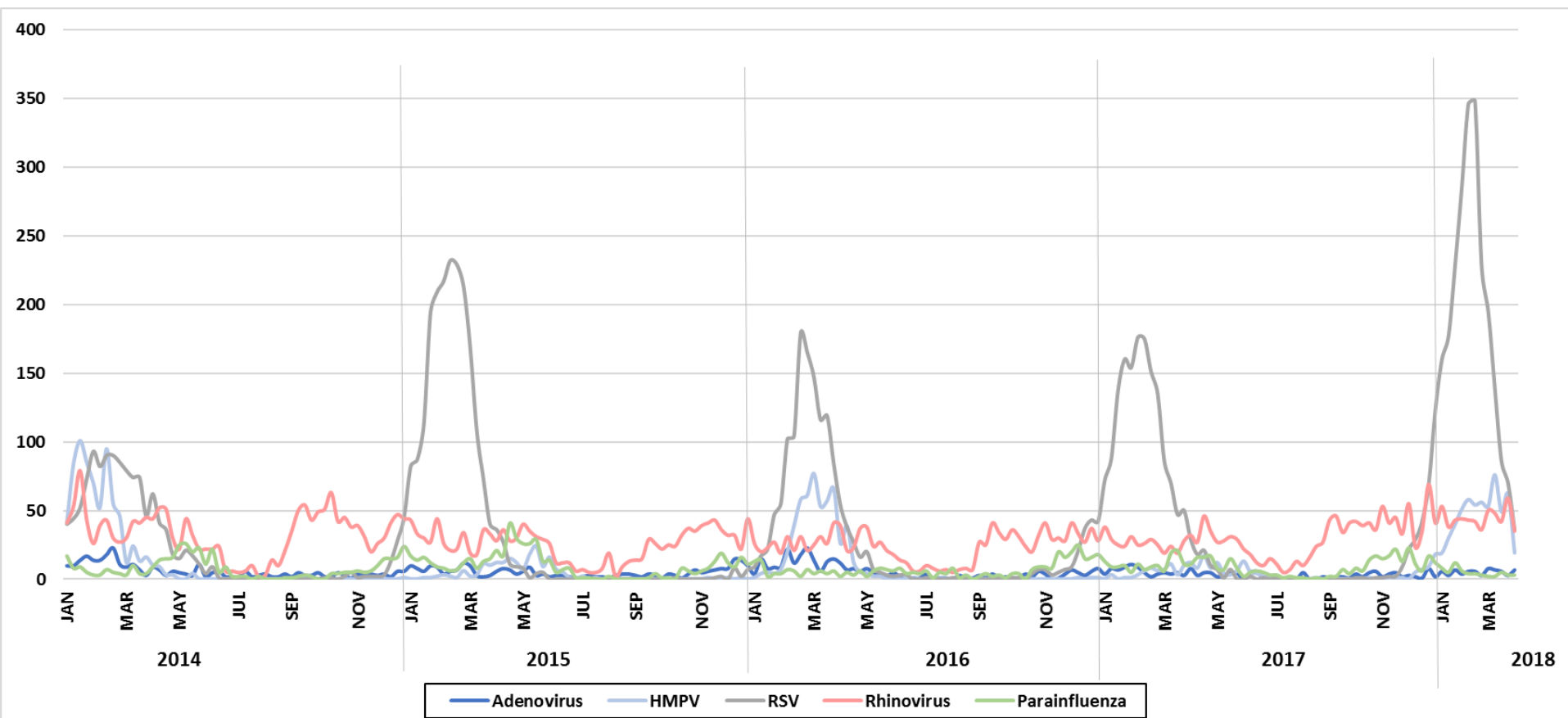
<b>NW</b>	San Juan Regional Medical Center, Farmington; and Acoma-Canoncito-Laguna Indian Health Hospital, Acoma Pueblo
<b>NE</b>	Taos-Picuris Indian Health Clinic, Taos; Pecos Valley Medical Center, Pecos; La Familia Medical Clinics, Santa Fe; Los Alamos Family Care Clinic, Los Alamos; Jicarilla Apache Indian Health Clinic, Dulce; Children's Clinic PA, Los Alamos
<b>Metro</b>	Lovelace Downtown Medical Center, Albuquerque; University of New Mexico Student Health Clinic, Albuquerque; Presbyterian Medical Group-Atrisco, Northside, Pediatric Urgent Care; Albuquerque Health Partners Urgent Care, Rio Rancho
<b>SW</b>	Gila Regional Medical Center, Silver City; Hidalgo Medical Services Clinic, Lordsburg; Ben Archer Health Center, Deming, Columbus, and Dona Ana; La Clinica de Familia, Sunland Park; Mescalero Apache Indian Health Hospital, Mescalero; New Mexico Mining and Technology Institute, Socorro
<b>SE</b>	Carlsbad Medical Center, Carlsbad; Lea Regional Medical Center, Hobbs; Eastern New Mexico Medical Center, Roswell; Roosevelt General Hospital Clinic, Portales

## Laboratory Sites Participating in RSV Data Collection (Facility name, City)

	San Juan Regional Medical Center, Farmington and Acoma-Canoncito-Laguna Indian Health Hospital, Acoma, Gallup Indian Medical Center, Gallup; Zuni Hospital, Zuni; Crownpoint IHS, Gallup;
	Los Alamos Medical Center, Los Alamos, Dulce Health Center, Dulce; Christus St. Vincent. Santa Fe; Alta Vista Regional Hospital, Las Vegas; Miners' Colfax Medical Center, Raton
	Quest Diagnostic Laboratory, Albuquerque
	Gerald Champion, Alamogordo
	Artesia General Hospital, Artesia; Carlsbad Medical Center, Carlsbad; Lea Regional Medical Center, Hobbs; Eastern New Mexico Medical Center, Roswell

\* Data is not representative of all facilities in New Mexico

# Non-Influenza Respiratory Disease Surveillance, 2014-2018



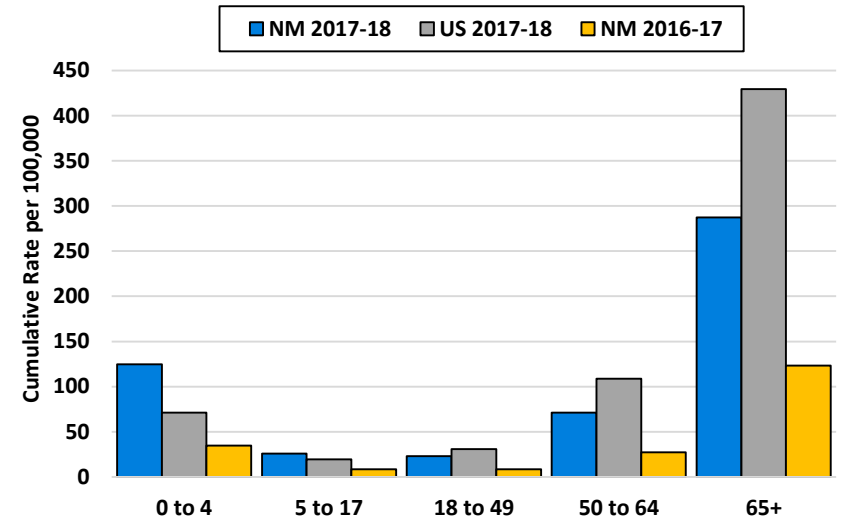
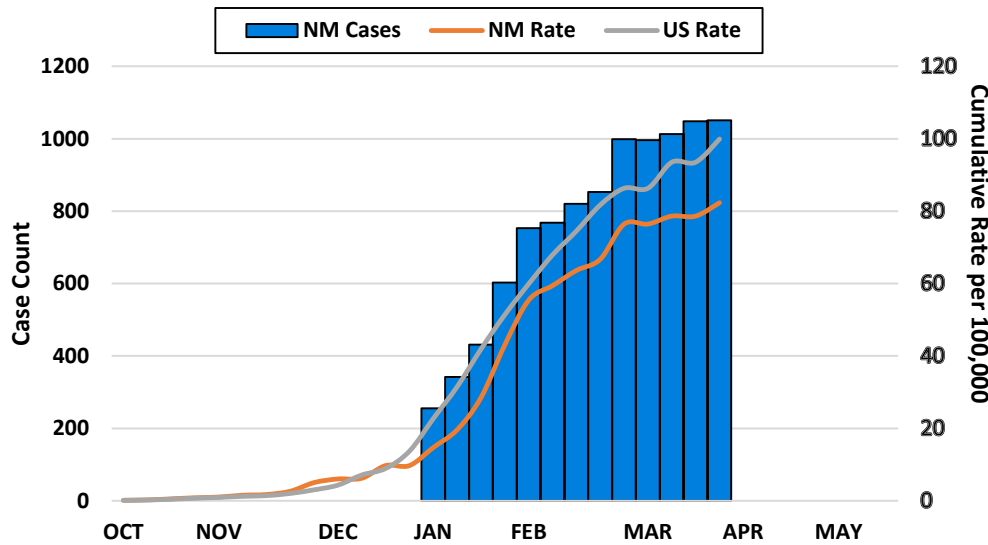
with weakened immune systems.

**Respiratory Syncytial Virus (RSV):** Can cause more severe infections such as bronchiolitis, an inflammation of the small airways in the lung, and pneumonia, an infection of the lungs. It is the most common cause of bronchiolitis and pneumonia in children younger than 1 year of age.

**Human Rhinoviruses:** Are nonenveloped that cause upper respiratory tract infections. these infections can pose serious health concerns for young children, elderly individuals and persons with pre-existing health conditions leading to more serious illnesses.

**Human Parainfluenza Viruses:** Commonly cause upper and lower respiratory illnesses in infants and young children, but anyone can get infected. After you get infected, it takes about 2 to 7 days before you develop symptoms.

# Influenza Hospitalizations, NM & US, 2017-2018



## Pneumonia and Influenza (P & I) Deaths, NM, 2015-2018\*

Season	Season to date P & I Deaths	Pneumonia Deaths	Adult Flu Deaths	Pediatric Flu Deaths	Total P & I Deaths
2017-2018	226	165	60	1	226
2016-2017	222	195	27	0	222
2015-2016	190	159	30	1	190

**Pneumonia death:** Is defined as having a cause of death that is related to pneumonia & influenza (P & I) not including: aspiration pneumonia, pneumonitis, or pneumococcal meningitis.

**Influenza death:** Is defined as having a cause of death that is related to pneumonia & influenza (P & I) not including: parainfluenzae or *Haemophilus influenzae*.

\* The 2017-2018 flu season started October 1<sup>st</sup>, 2017, death data is delayed up to 8 weeks

# Influenza Vaccination Information

## Still Need to Get Your Flu Shot?

HealthMap Vaccine Finder:

<http://vaccine.healthmap.org/>

Or

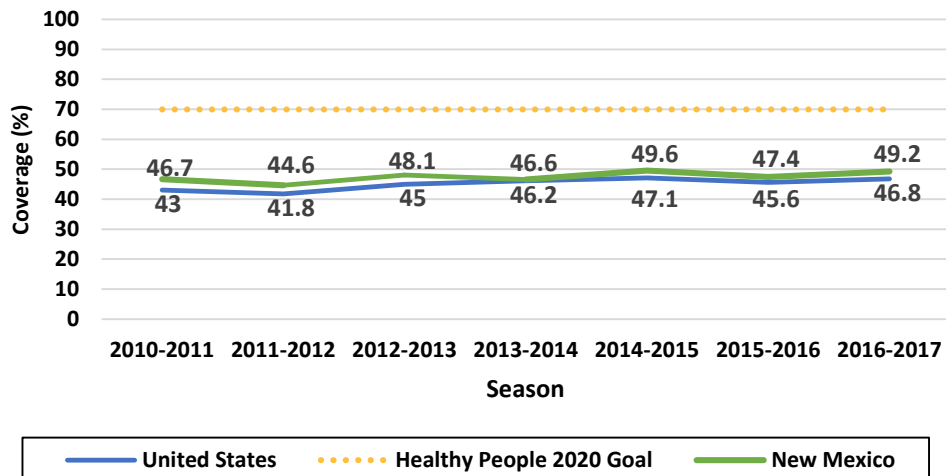
Contact your Primary Care Provider (PCP) or a local public health office (LPHO) near you:

<https://nmhealth.org/location/public/>

“Influenza is a serious disease that can lead to hospitalization and sometimes even death. Every flu season is different, and influenza infection can affect people differently, but millions of people get the flu every year, hundreds of thousands of people are hospitalized and thousands or tens of thousands of people die from flu-related causes every year. Even healthy people can get very sick from the flu and spread it to others. Flu-related hospitalizations since 2010 ranged from 140,000 to 710,000, while flu-related deaths are estimated to have ranged from 12,000 to 56,000. During flu season, flu viruses circulate at higher levels in the U.S. population in the United States can begin as early as October and last as late as May. An annual seasonal flu vaccine is the best way to reduce your risk of getting sick with seasonal flu and spreading it to others. When more people get vaccinated against the flu, less flu can spread through that community.”

-Centers for Disease Control and Prevention

## New Mexico and National Influenza Vaccination Coverage by Season, Age >6 months, 2010-2017



## For Additional Vaccine Information/resources:

FluVaxView:

<https://www.cdc.gov/flu/fluvoxview/index.htm>

Seasonal Influenza Vaccination Resources for Health Professionals:

<https://www.cdc.gov/flu/professionals/vaccination/index.htm>

Misconceptions about Flu Vaccines:

<https://www.cdc.gov/flu/about/qa/misconceptions.htm>



# Appendix

Health Region	Participating Sentinel Sites (Facility name, City)	Syndromic Surveillance Hospitals (Facility name, City)
Northwest	Acoma-Canoncito-Laguna Indian Health Hospital, Acoma; Dzilth Health Center, Bloomfield	San Juan Regional Medical Center, Farmington; Cibola General Hospital, Grants
Northeast	Taos-Picuris Indian Health Clinic, Taos; Pecos Valley Medical Center, Pecos; La Familia Medical Clinics, Santa Fe; Jicarilla Apache Indian Health Clinic, Dulce; Children’s Clinic PA, Los Alamos;	Alta Vista Regional Hospital, Las Vegas; Christus St. Vincent, Santa Fe; Holy Cross Hospital, Taos; Los Alamos Medical Center, Los Alamos; Miners’ Colfax Medical Center, Raton; Presbyterian Espanola Hospital, Espanola
Metro	Lovelace Downtown Medical Center, Albuquerque; University of New Mexico Student Health Clinic, Albuquerque; Presbyterian Medical Group-Atrisco, Northside, Pediatric Urgent Care; Davita Urgent Care, Rio Rancho	Lovelace Westside Hospital, Albuquerque; UNM Health System, Albuquerque
Southwest	Gila Regional Medical Center, Silver City; Hidalgo Medical Services Clinic, Lordsburg; Ben Archer Health Centers, Deming and Dona Ana; La Clinica de Familia, Sunland Park; Mescalero Apache Indian Health Hospital, Mescalero; New Mexico Mining and Technology Institute, Socorro, Hobbs; La Clinica de Familia Sunland Park Medical, Sunland Park	Mimbres Memorial Hospital, Deming; Mountain View Regional Medical Center, Las Cruces
Southeast	Eastern New Mexico Medical Center, Roswell; Roosevelt General Hospital Clinic, Portales	Carlsbad Medical Center, Carlsbad; Dr. Dan C. Trigg Memorial, Tucumcari; Lea Regional Medical Center, Hobbs; Lincoln County Medical Center, Ruidoso; Lovelace Regional Hospital; Roswell; Nor-Lea Hospital District, Lovington; Plains Regional Medical Center, Clovis

**In accordance with New Mexico Administrative Code (NMAC) 7.4.3.13 Influenza is a reportable condition for the following:**

- Influenza, laboratory confirmed hospitalizations only
- Influenza-associated pediatric death
- Acute illness or condition of any type involving large numbers of persons in the same geographic area (outbreaks)
- Other illnesses or condition of public health significance (novel influenza A)

**For more information on reportable conditions please visit:**

<http://www.nmcpr.state.nm.us/nmac/parts/title07/07.004.0003.htm>

Report published by New Mexico Department of Health (NMDOH), Epidemiology and Response Division (ERD)

Infectious Disease Epidemiology Bureau (IDEB)

For questions, please call 505-827-0006. For more information on influenza go to the NMDOH web page:

<https://nmhealth.org/about/erd/ideb/isp/> Or The CDC web page: <http://www.cdc.gov/flu/index.htm>

