

Human Immunodeficiency Virus and Acquired Immunodeficiency Syndrome Among Adults and Adolescents in New Mexico – 2014



HIV Epidemiology and Surveillance Program

**Infectious Disease Epidemiology Bureau
Epidemiology and Response Division
New Mexico Department of Health**

**1190 Saint Francis Drive, N1350
Santa Fe, NM 87502-6110**

Phone: (505) 476-3019

Fax: (505) 476-3544

<https://nmhealth.org/about/erd/ideb/haep/>

This page intentionally blank.

New Mexico Department of Health

Lynn Gallagher
Cabinet Secretary
New Mexico Department of Health

Michael Landen, MD, MPH
State Epidemiologist
Director, Epidemiology and Response Division

Joan Baumbach, M.D., M.P.H., M.S.
Deputy State Epidemiologist

W. David Selvage, PA-C, MHS
Chief, Infectious Disease Epidemiology Bureau

HIV Epidemiology and Surveillance Program

D. Fermin Arguello, MD, MPH
Director, HIV Surveillance & Epidemiology Program
(505) 476-3019
Fermin.Arguello@state.nm.us

Laura Gutierrez
Management Analyst
(505) 827-2155
Laura.Gutierrez@state.nm.us

Monica Roybal
Management Analyst
(505) 476-3035
Monica.Roybal@state.nm.us



To report HIV or AIDS in New Mexico:
New Mexico Department of Health
1190 Saint Francis Drive, N1350
P.O. Box 26110
Santa Fe, NM 87502-6110
Attention: Surveillance Coordinator

Phone: (505) 476-3515
Secure fax: (505) 476-3544

The HIV Epidemiology and Surveillance Program would like to thank the many dedicated individuals who contribute to HIV surveillance in New Mexico. These providers, laboratories, and surveillance staff support the collection of data upon which this report is based. HIVSEP also thanks its partners within the New Mexico Department of Health, including the Public Health Division's HIV Prevention, HIV Services, and Sexually Transmitted Disease Prevention Programs.

This publication was supported by Cooperative Agreement Number 5U62PS003956-03 from the Centers for Disease Control and Prevention. Its contents are solely the responsibility of the authors and do not necessarily represent the official views of the Centers for Disease Control and Prevention.

This report completed on March 29, 2017.

Table of Contents

INTRODUCTION 1
 ORGANIZATION OF REPORT 1
FORMAT CHANGES FROM PRIOR REPORTS..... 1
OVERVIEW..... 2
 NEW DIAGNOSIS OF HIV INFECTION (STAGE-1 THROUGH -3 HIV INFECTIONS) 2
 NEW STAGE-3 HIV INFECTIONS (i.e., AIDS) 3
 PERSONS LIVING WITH DIAGNOSIS OF HIV (STAGE-1 THROUGH -3 HIV INFECTIONS) 3
 HIV INFECTIONS BY NM PUBLIC HEALTH REGIONS 3
 HIV-RELATED MORTALITY 3
SECTION 1: New Diagnoses of HIV Infection and Diagnoses of Stage-3 Infection (i.e., AIDS)..... 5
SECTION 2: Persons Living with Diagnosed of HIV Infection or with Diagnosis of Stage-3 HIV Infection (i.e., AIDS) 15
SECTION 3: New Diagnoses of HIV Infection and Persons Living with Diagnosed HIV by Region in New Mexico 16
SECTION 4: Deaths and Survival after a Diagnosis of HIV Infection or Diagnosis of Stage-3 HIV Infection (i.e., AIDS) 22
DATA SOURCES..... 24
STRENGTHS AND LIMITATIONS..... 24
TECHNICAL NOTES 25
ACRONYMS..... 28
DEFINITIONS..... 28
NMDOH RESOURCES 29
COMMUNITY PARTNERS..... 30



Confidential HIV Case Report

State regulations* require reporting of all HIV infection diagnosed or treated in New Mexico. Reports may be phoned to: (505) 476-3515 or securely faxed to (505) 476-3544, or mailed to:

New Mexico Department of Health
 1190 St. Francis Dr., N 1359
 Santa Fe, NM 87502-6110
 Attn: Surveillance Coordinator

Person Completing Form: _____ Facility: _____ Phone: _____ Date: _____

Patient Name _____	Date of Birth _____	Phone _____
Patient Alias _____	Patient Maiden Name _____	
Current Address _____	City _____	County _____ State _____ Zip Code _____
Sex at Birth <input type="checkbox"/> Male <input type="checkbox"/> Female	Current Gender <input type="checkbox"/> Male <input type="checkbox"/> Female <input type="checkbox"/> Transgender Male to Female (MTF) <input type="checkbox"/> Transgender Female to Male (FTM)	<input type="checkbox"/> Unknown <input type="checkbox"/> Other gender identify (specify) _____
Is patient currently pregnant? <input type="checkbox"/> Yes <input type="checkbox"/> No <input type="checkbox"/> Unknown	If yes, expected date of delivery _____	
Ethnicity <input type="checkbox"/> Hispanic <input type="checkbox"/> Non-Hispanic	Race <input type="checkbox"/> White <input type="checkbox"/> Native Am <input type="checkbox"/> African Am <input type="checkbox"/> Asian/Pacific Islander <input type="checkbox"/> Other _____	(Specify)
Social Security # _____	Country of Birth _____	
Vital Status <input type="checkbox"/> Living <input type="checkbox"/> Deceased	Date of Death _____	Place of Death _____ (City, State)

INTRODUCTION

The New Mexico Department of Health (NMDOH) Human Immunodeficiency Virus Epidemiology and Surveillance Program (HIVSEP) collects, analyzes, and disseminates surveillance data on HIV infection in New Mexico. This annual surveillance report summarizes information about diagnosed HIV infections in New Mexico for the most recent calendar year for which data collection is complete (*i.e.*, 12 months after the end of the target analysis year). This information is used by NMDOH's public health partners including other agencies, health departments, nonprofit organizations, academic institutions, health care providers and the public to help optimize prevention efforts, plan services, allocate resources, develop policy, and monitor trends in HIV infection.

The *2014 HIV Surveillance Report* includes data for adult and adolescent (aged 13 years or older) New Mexico residents who are diagnosed with HIV infection or who are living with HIV through year-end 2014. To ensure that 2014 data are optimally complete and accurate, HIVSEP conducts data collection and follow-up activities for 12 months after the conclusion of 2014 before analyses are performed. Case ascertainment was based on the 2008 revised HIV case definition for adults and adolescents age ≥ 13 years.¹

ORGANIZATION OF REPORT

The *2014 HIV Surveillance Report* is organized into four sections:

1. New Diagnoses of HIV Infection and Stage-3 HIV Infection (*i.e.*, AIDS)
2. Persons Living with Diagnosed HIV Infection or with Infection Ever Classified as Stage-3 HIV Infection (*i.e.*, AIDS)
3. New Diagnoses of HIV Infection and Persons Living with Diagnosed HIV by Region in New Mexico
4. Deaths and Survival after a Diagnosis of HIV Infection or Stage-3 HIV Infection (*i.e.*, AIDS)

FORMAT CHANGES FROM PRIOR REPORTS

The principle change between this 2014 report and reports for prior years include a change from frequency-oriented incident HIV infection figures to rate- or proportion-oriented figures. These changes facilitate more appropriate visual depictions and comparisons of transmission force across characteristics.

HIVSEP staff are available to assist with interpretation of these data as well as to provide additional analyses. With your assistance, surveillance data will continue to guide HIV prevention strategies and resource allocation for care services in New Mexico. For questions or comments, please call the HIV Report Hot-Line at (505) 476-3515.

¹ [Schneider E, Whitmore S, Glynn KM, Dominguez K, Mitsch A, McKenna MT. Revised surveillance case definitions for HIV infection among adults, adolescents, and children aged <18 months and for HIV infection and AIDS among children aged 18 months to <13 years--United States, 2008. *MMWR Recomm Rep* 2008,57:1-12.](#)

OVERVIEW

NEW DIAGNOSIS OF HIV INFECTION (STAGE-1 THROUGH -3 HIV INFECTIONS)

During 2014, 131 adult and adolescent (ages 13 years and older) New Mexico residents were diagnosed with new HIV infection. This represents a decrease of 8% from the number of persons diagnosed in 2013, which is consistent with the negative 10-year linear trend in total new HIV infections observed in New Mexico.

Males constituted the overwhelming majority (88%) of people with new HIV infections. Males had a new HIV infection incidence rate per 100,000 population that was seven-times greater than women (13.6 vs. 1.7, respectively). Both sexes experienced decreases in total new HIV infections in 2014 compared to 2013; an observation that is consistent with the negative linear trend seen in both sexes over the past 10 years.

Persons from the Hispanic, White and American Indian/Native American race-ethnic groups made up 93% of all new HIV infections in 2013. There were more than twice as many new HIV infections in Hispanics (n=65) than either Whites (n=30) or American Indians/Native Americans (n=28) in 2013. However, African Americans and American Indian/Native American had the highest (and similar) rates (19.0 and 18.9 per 100,000 population, respectively) of new HIV infections in 2013, which was more than twice that of Hispanics (8.3 per 100,000 population) and more than four-times that of Whites (4.1 per 100,000 population). All race-ethnic groups (except American Indians/Native Americans & African Americans) experienced decreases in total new HIV infections in 2014 compared to 2013, consistent with the observed negative 10-year linear trend seen in these race-ethnic groups.

The decreased total number of persons with HIV infections was not evenly distributed amongst age groups or gender-specific transmission risk categories. The 25—34-year-old age group had the highest proportion (37%) and rate (17.1 per 100,000 population) of new HIV infections in 2014, followed by the 35—44 (21%; 11.0 per 100,000 population), 45—54 (17%; 8.3 per 100,000 population), 13—24 (18%; 6.6 per 100,000 population) and then the great than or equal to 55-year-old (8%; 1.9) age groups. All age groups except 25—34 and 45—54-year-olds experienced decreases in total new HIV compared to 2013. Males belonging to the MSM risk category comprised more than two-thirds of all males with new HIV infections; the closest non-unknown risk category were the intravenous drug use (IDU; 7%) and high-risk heterosexual contact (HRH; 8%). The frequency of new HIV infections in males belonging to each risk category, except IDU and HRH, experienced a decrease in total new HIV in 2014 compared to 2013. The substantial increase in males with new HIV infections and belonging to the IDU (100% increase) and HRH (80% increase) risk categories is in contrast with the 10-year negative linear trend for this group. Females belonging to the HRH risk category comprised nearly two-thirds of all females with new HIV infections, followed by unknown (33%), IDU (6%) and other (0%) risk categories. The frequency of new HIV infections in females belonging to each risk category experienced a decrease in total new HIV in 2014 compared to 2013.

NEW STAGE-3 HIV INFECTIONS (i.e., AIDS)

During 2014, 62 persons were newly classified as Stage-3 HIV Infection (*i.e.*, AIDS) in New Mexico; this was a 19% decrease from 2013. The large majority of persons with new diagnosis of Stage-3 HIV infection consisted of males (84%). Although Hispanics comprised the largest proportion (50%) of all race-ethnic groups, African Americans experienced the largest new Stage-3 HIV Infection rate (8.1 per 100,000 population). Persons from the 45—54-year-old age group had the largest proportion (29%) and rate (6.8 per 100,000 population) of new Stage-3 HIV infection.

In 2014, 131 persons had HIV infection that progressed to Stage-3 HIV infection within 12 months of HIV infection diagnosis; this was a 17% increase from 2013. With 15 females who had HIV infection progress to Stage-3 HIV infection within 12 months in 2014, females experienced a substantial (50%) increase from 2013. Substantial increases compared to 2013 were also observed among American Indians/Native Americans (n=12, 50% increase), 45—54-year-olds (n=13, 62% increase) and males fitting into the IDU risk category (n=6, 200% increase).

PERSONS LIVING WITH DIAGNOSIS OF HIV (STAGE-1 THROUGH -3 HIV INFECTIONS)

By the end of 2014, a total of 3,331 persons were living with HIV infection (Stage-1 through -3 HIV infection) in New Mexico; 59% of these persons had ever been classified as Stage-3 HIV Infection. Apart from the pattern of age at diagnosis, the frequency pattern across characteristics for Persons Living with HIV Infection was similar to that of persons with new diagnosis of HIV infection; where the peak age of initial diagnosis of HIV infection shifted upwards to the 45—54-year-old age group (n=1,114; 419.3 per 100,000 population), followed by the ≥55 (n=939; 158.6 per 100,000 population), 35—44 (n=716; 292.2 per 100,000 population), 25—34 (n=462; 164.2 per 100,000 population) and 13—24 (n=100; 28.6 per 100,000 population) year-old age groups.

HIV INFECTIONS BY NM PUBLIC HEALTH REGIONS

In 2014, the Metropolitan Region had the largest proportion (50%) and rate (8.7 per 100,000 population) of persons with new HIV infection diagnosis, followed by the Northwest (20%; 14.3 per 100,000 population), Northeast (13%; 6.7 per 100,000 population) and the Southwest (11%; 4.9 per 100,000 population) regions. Although the Metropolitan Region had the highest proportion of new Stage-3 HIV Infection (*i.e.*, AIDS), the Northwest Region had the highest rate (4.9 per 100,000 population) of new Stage-3 HIV infection and the highest proportion (37%) of persons that progressed from initial HIV diagnosis to Stage-3 infection within 12 months.

HIV-RELATED MORTALITY

The number of deaths in persons living with HIV or Stage-3 HIV Infection in New Mexico has experienced a decreasing linear trend for the past 10 years. Since 2005, there has been a 25% decrease in deaths. During the 2005—2009 period (*i.e.*, the most recent period with 1, 3 and 5 years of complete survival data), survival after diagnosis with Stage-3 HIV Infection has remained high with 92%, 87% and 83% of persons surviving at least one, three and five years after diagnoses. Females (72%), American Indians/Alaska Natives (72%), 45—54-year-old age group (79%), males in the IDU risk category (72%) and females in the unknown risk category (61%) have the lowest percentage of persons surviving at least five years.

1 in 5
people with
HIV
don't know
THEY
have it.



Get the facts. Get tested. Get involved.

Find out more about HIV, including where to get tested, at www.hivtest.cdc.gov.



1 de cada 5
personas con
VIH
no sabe
que lo
tiene



Infórmese. Hágase la prueba. Participe.

Encuentre más información sobre el VIH, incluidos los lugares donde hacerse la prueba, en hivtest.cdc.gov/espanol/default.aspx.



SECTION 1: New Diagnoses of HIV Infection and Diagnoses of Stage-3 HIV Infection (i.e., AIDS)

Table 1.1. Diagnoses of HIV Infection Among Adults and Adolescents, by Year of Diagnosis and Selected Characteristics, New Mexico, 2010—2014

	2010			2011			2013			2013			2014		
	N	Rate	% of Total	N	Rate	% of Total	N	Rate	% of Total	N	Rate	% of Total	N	Rate	% of Total
TOTAL	150	8.9	100%	138	8.1	100%	119	6.9	100%	143	8.3	100%	131	7.6	100%
SEX															
Male	128	15.4	85%	118	14.1	86%	109	12.9	92%	124	14.6	87%	116	13.6	89%
Female	22	2.6	15%	20	2.3	14%	10	1.1	8%	19	2.2	13%	15	1.7	11%
RACE/ETHNICITY															
African Am.	9	26.4	6%	7	20.0	5%	2	5.6	2%	6	16.6	4%	7	18.9	5%
AI/AN	25	17.6	17%	21	14.7	15%	20	13.8	17%	21	14.3	15%	28	19.0	21%
Asian/PI	1	3.9	1%	1	3.7	1%	0	0.0	0%	1	3.5	1%	0	0.0	0%
Hispanic	78	10.6	52%	73	9.7	53%	67	8.8	56%	79	10.2	55%	65	8.3	50%
White	34	4.5	23%	32	4.3	23%	28	3.7	24%	35	4.7	24%	30	4.1	23%
Multi-race	3	--	2%	4	--	3%	2	--	2%	1	--	1%	1	--	1%
AGE															
13-24	27	7.7	18%	23	6.5	17%	20	5.7	17%	32	9.1	22%	23	6.6	18%
25-34	55	20.5	37%	45	16.4	33%	41	14.8	34%	45	16.1	31%	48	17.1	37%
35-44	31	12.5	21%	37	14.9	27%	28	11.3	24%	31	12.6	22%	27	11.0	21%
45-54	23	7.9	15%	20	7.0	14%	24	8.6	20%	22	8.1	15%	22	8.3	17%
55+	14	2.1	9%	13	2.4	9%	6	1.1	5%	13	2.3	9%	11	1.9	8%
TRANSMISSION CATEGORY*															
MALE															
MSM	83	--	65%	82	--	69%	70	--	64%	91	--	73%	81	--	70%
IDU	4	--	3%	9	--	8%	6	--	6%	5	--	4%	10	--	9%
MSM/IDU	7	--	5%	10	--	8%	11	--	10%	13	--	10%	4	--	3%
HRH	9	--	7%	5	--	4%	10	--	9%	5	--	4%	9	--	8%
Other	0	--	0%	0	--	0%	0	--	0%	0	--	0%	0	--	0%
NIR & NRR	25	--	20%	12	--	10%	12	--	11%	10	--	8%	12	--	10%
FEMALE															
IDU	2	--	9%	6	--	30%	2	--	20%	4	--	21%	1	--	7%
HRH	10	--	45%	9	--	45%	6	--	60%	9	--	47%	9	--	60%
Other	0	--	0%	1	--	5%	0	--	0%	0	--	0%	0	--	0%
NIR & NRR	10	--	45%	4	--	20%	2	--	20%	6	--	32%	5	--	33%
REGION															
Northwest	18	9.9	12%	21	11.6	15%	18	9.9	15%	17	9.4	12%	26	14.3	20%
Northeast	25	10.1	17%	18	7.2	13%	23	9.1	19%	27	10.7	19%	17	6.7	13%
Metro	69	9.4	46%	65	8.8	47%	50	6.7	42%	67	8.9	47%	66	8.7	50%
Southeast	8	3.5	5%	5	2.2	4%	5	2.2	4%	7	3.0	5%	7	3.0	5%
Southwest	30	10.0	20%	29	9.6	21%	23	7.5	19%	25	8.2	17%	15	4.9	11%

NOTE: Due to rounding, percentages may not total to 100%.

* Percentages represent the proportion of persons with the risk behavior from the total respective subgroup (e.g., the numerator was the number of male or females with a new HIV diagnosis and IDU divided by a denominator that was the total number of males or females, respectively).

Figure 1.1. Rate of New Diagnoses of HIV Infection Among Adults & Adolescents per 100,000 population by Year of Diagnosis & Sex, New Mexico, 2005—2014

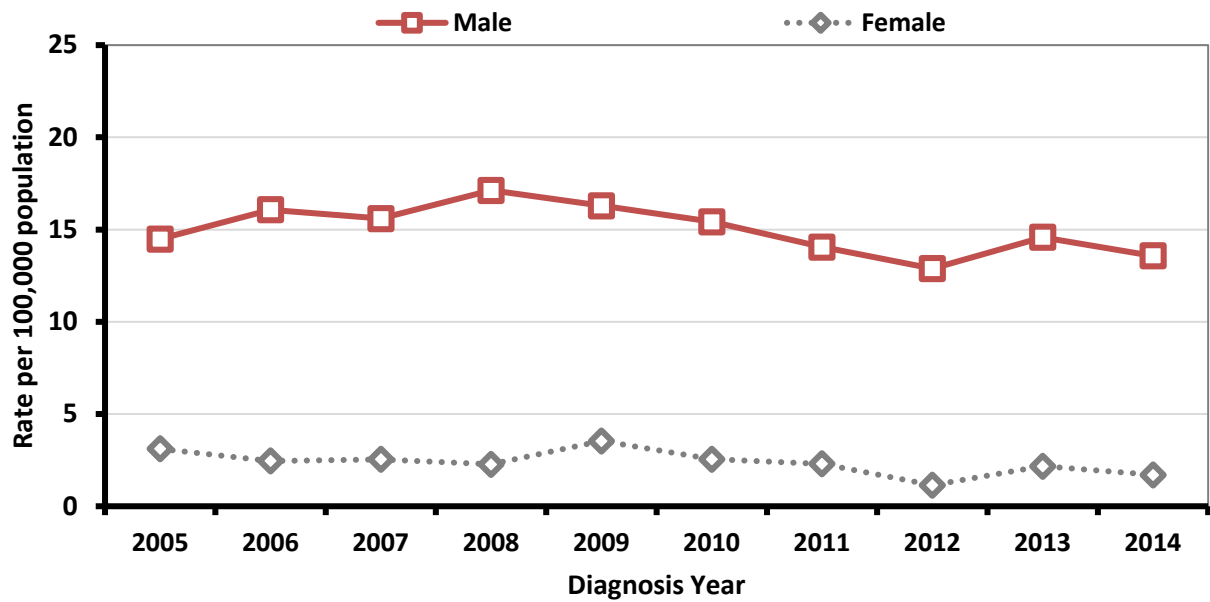


Figure 1.2. Rate of New Diagnoses of HIV Infection Among Adults & Adolescents per 100,000 population by Year of Diagnosis & Race-Ethnicity, New Mexico, 2005—2014

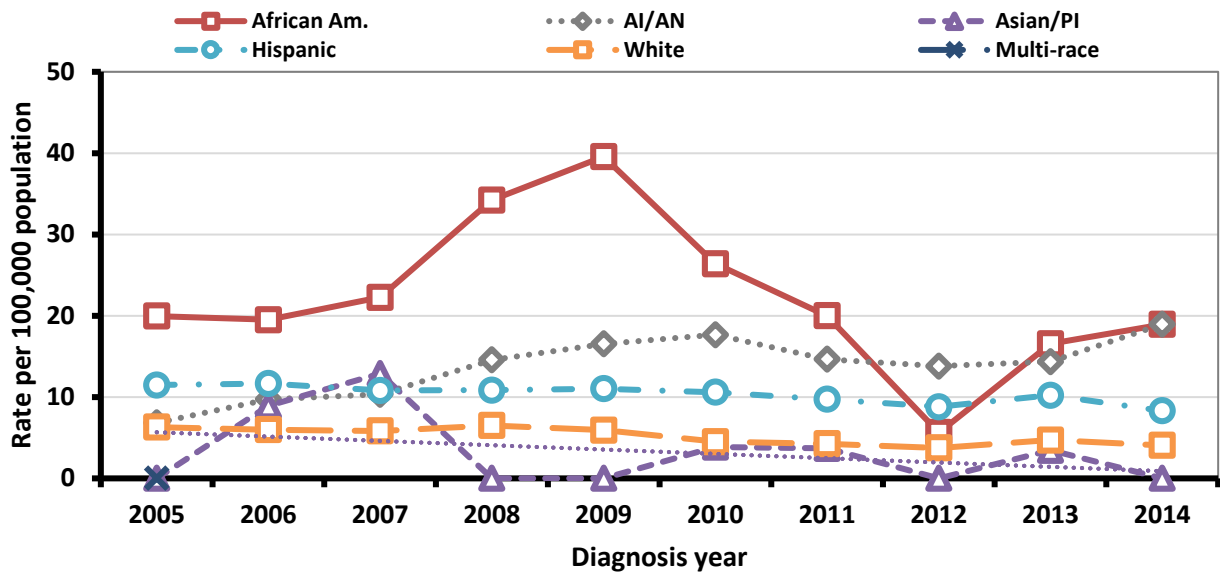


Figure 1.3. Rate of New Diagnoses of HIV Infection Among Adults & Adolescents per 100,000 population by Year of Diagnosis & Age (years) at Diagnosis, New Mexico, 2005—2014

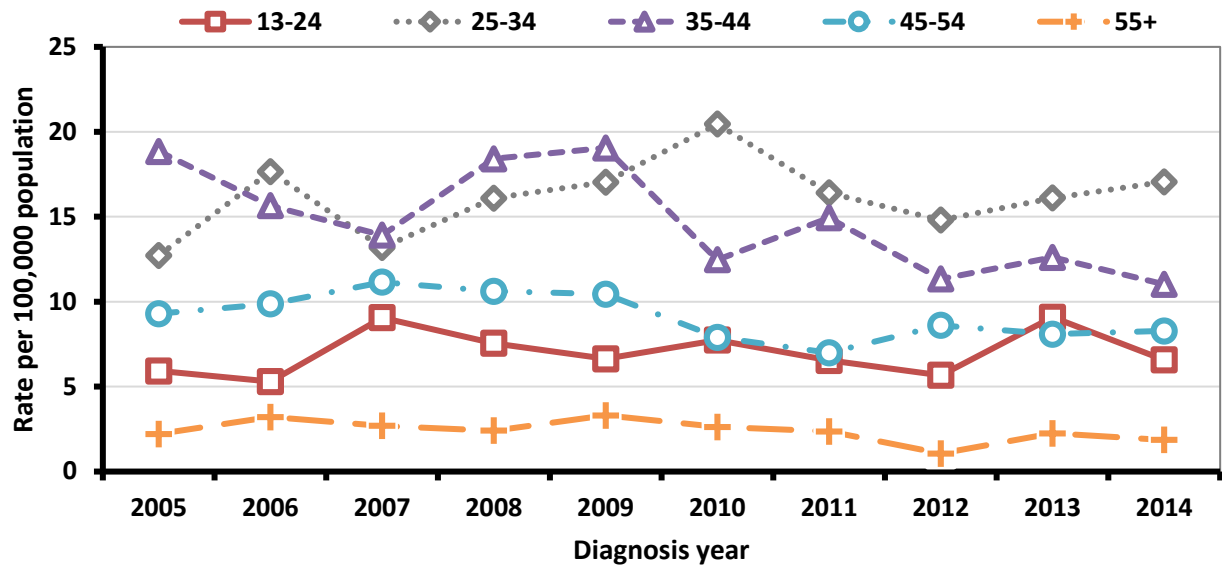


Figure 1.4. Proportion of New Diagnoses of HIV Infection Among Adult & Adolescent Males by Year of Diagnosis & Transmission Category, New Mexico, 2005—2014

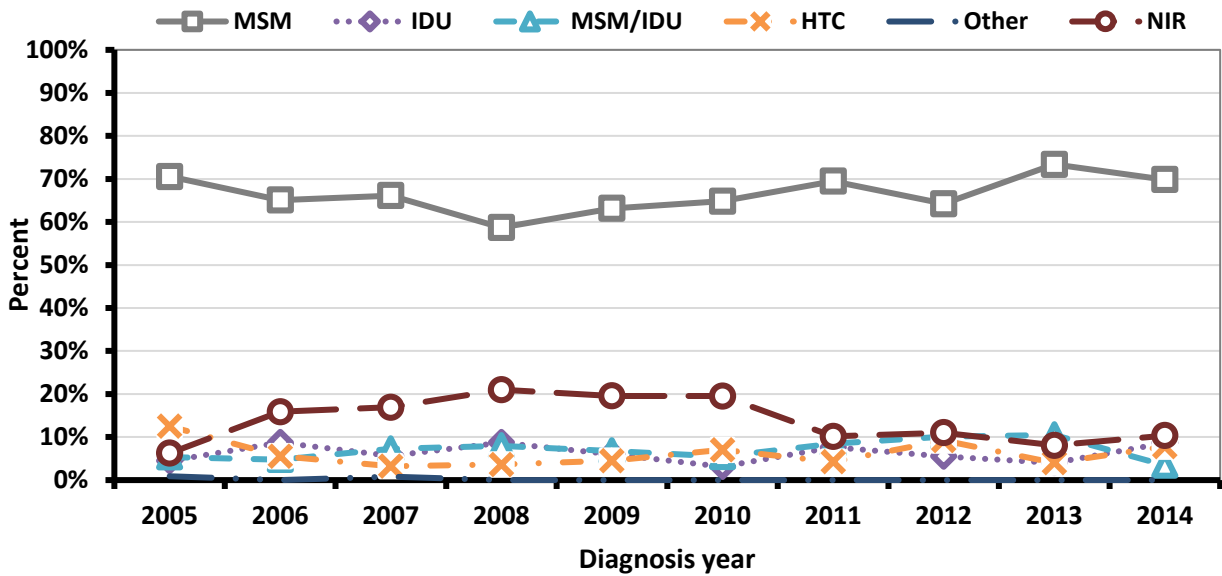


Figure 1.5. Proportion of New Diagnoses of HIV Infection Among Adult & Adolescent Females by Year of Diagnosis & Transmission Category, New Mexico, 2005—2014

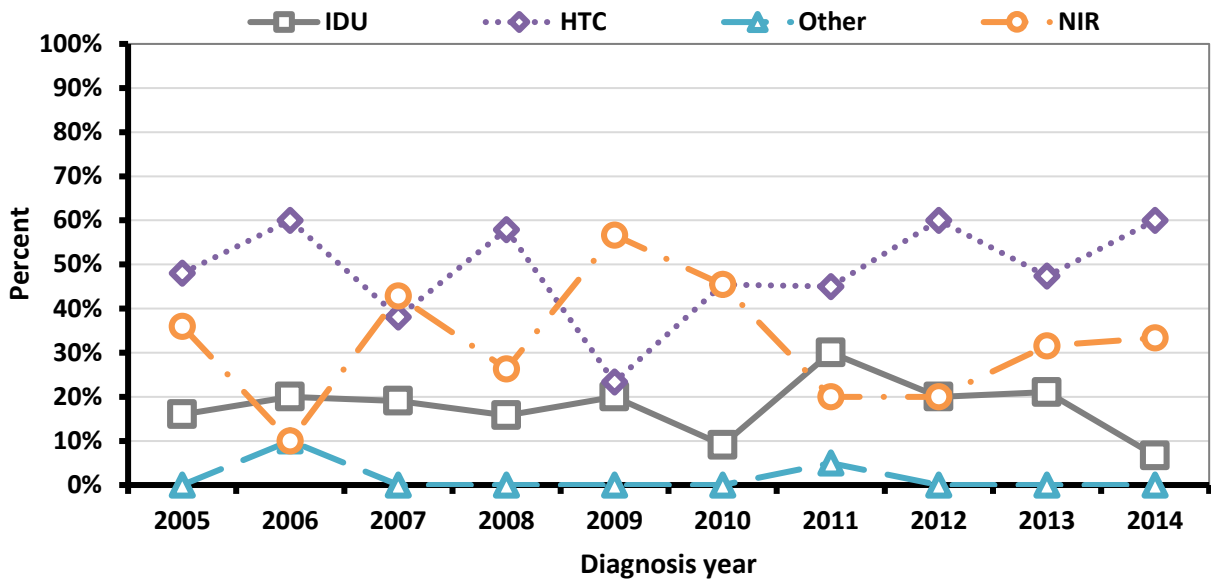


Figure 1.6. New Diagnoses of HIV Infection Among Adults & Adolescents by Year of Diagnosis & Region, New Mexico, 2005—2014

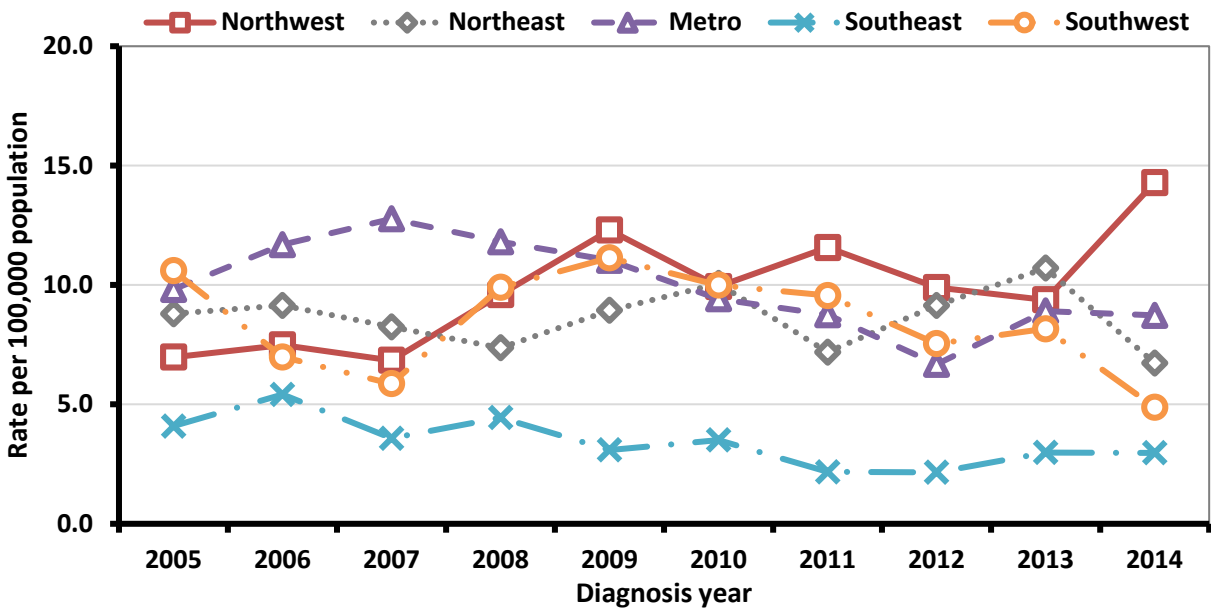


Table 1.2. Stage-3 HIV Infection (i.e., AIDS) Among Adults & Adolescents, by Year of Diagnosis & Selected Characteristics, New Mexico, 2010—2014

	2010			2011			2013			2013			2014		
	N	Rate	% of Total	N	Rate	% of Total	N	Rate	% of Total	N	Rate	% of Total	N	Rate	% of Total
TOTAL	99	5.9	100%	76	4.4	100%	85	4.9	100%	77	4.5	100%	62	3.6	81%
SEX															
Male	81	9.8	82%	64	7.6	84%	77	9.1	91%	68	8.0	88%	52	6.1	84%
Female	18	2.1	18%	12	1.4	16%	8	0.9	9%	9	1.0	12%	10	1.1	16%
RACE/ETHNICITY															
African Am.	2	5.9	2%	5	14.3	7%	4	11.3	5%	3	8.3	4%	3	8.1	5%
AI/AN	17	12.0	17%	6	4.2	8%	11	7.6	13%	15	10.2	19%	11	7.4	18%
Asian/PI	0	0.0	0%	1	3.7	1%	0	0.0	0%	0	0.0	0%	0	0.0	0%
Hispanic	50	6.8	51%	40	5.3	53%	47	6.2	55%	34	4.4	44%	31	4.0	50%
White	27	3.6	27%	22	2.9	29%	21	2.8	25%	23	3.1	30%	16	2.2	26%
Multi-race	3	--	3%	2	--	3%	2	--	2%	2	--	3%	1	--	2%
AGE, years															
13-24	5	1.4	5%	1	0.3	1%	3	0.9	4%	4	1.1	5%	4	1.1	6%
25-34	33	12.3	33%	22	8.0	29%	32	11.6	38%	19	6.8	25%	14	5.0	23%
35-44	20	8.0	20%	23	9.3	30%	17	6.9	20%	25	10.2	32%	14	5.7	23%
45-54	19	6.5	19%	17	5.9	22%	22	7.9	26%	18	6.6	23%	18	6.8	29%
55+	22	3.2	22%	13	2.4	17%	11	2.0	13%	11	1.9	14%	12	2.0	19%
TRANSMISSION CATEGORY*															
MALE															
MSM	51	--	63%	42	--	66%	49	--	64%	49	--	72%	31	--	60%
IDU	1	--	1%	4	--	6%	4	--	5%	2	--	3%	7	--	13%
MSM/IDU	8	--	10%	7	--	11%	11	--	14%	6	--	9%	2	--	4%
HRH	5	--	6%	4	--	6%	7	--	9%	3	--	4%	5	--	10%
Other	0	--	0%	0	--	0%	0	--	0%	0	--	0%	0	--	0%
NIR or NRR	16	--	20%	7	--	11%	6	--	8%	8	--	12%	7	--	13%
FEMALE															
IDU	3	--	17%	2	--	17%	3	--	38%	4	--	44%	1	--	10%
HRH	8	--	44%	5	--	42%	3	--	38%	0	--	0%	6	--	60%
Other	0	--	0%	0	--	0%	0	--	0%	0	--	0%	0	--	0%
NIR or NRR	7	--	39%	5	--	42%	2	--	25%	5	--	56%	3	--	30%
REGION															
Northwest	17	9.4	17%	7	3.9	9%	11	6.0	13%	11	6.1	14%	9	4.9	15%
Northeast	9	3.6	9%	14	5.6	18%	15	6.0	18%	14	5.5	18%	7	2.8	11%
Metro	47	6.4	47%	38	5.1	50%	42	5.6	49%	37	4.9	48%	34	4.5	55%
Southeast	6	2.6	6%	4	1.7	5%	3	1.3	4%	5	2.1	6%	6	2.5	10%
Southwest	20	6.7	20%	13	4.3	17%	14	4.6	16%	10	3.3	13%	6	2.0	10%

NOTE: Due to rounding, percentages may not total to 100%.

* Percentages represent the proportion of persons with the risk behavior from the total respective subgroup (e.g., the numerator was the number of male or females with a new HIV diagnosis and IDU divided by a denominator that was the total number of males or females, respectively).

Figure 1.7. Rate of New Stage-3 HIV Infection (*i.e.*, AIDS) Among Adults & Adolescents per 100,000 population by Year of Diagnosis & Sex, New Mexico, 2005—2014

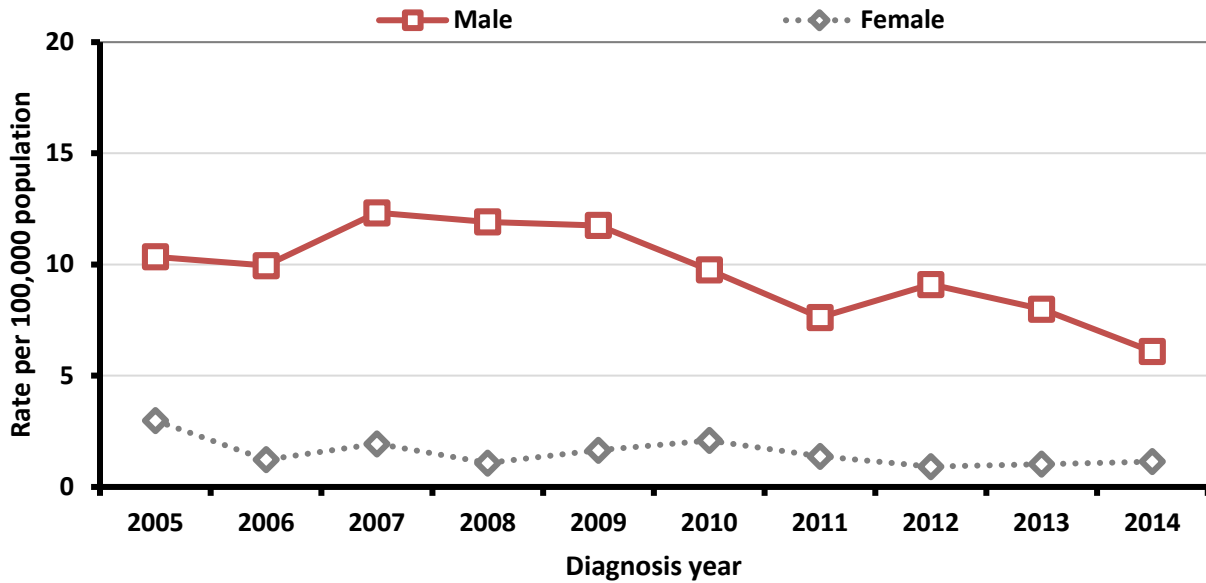


Figure 1.8. Rate of New Stage-3 HIV Infection (*i.e.*, AIDS) Among Adults & Adolescents per 100,000 population by Year of Diagnosis & Race/Ethnicity, New Mexico, 2005—2014

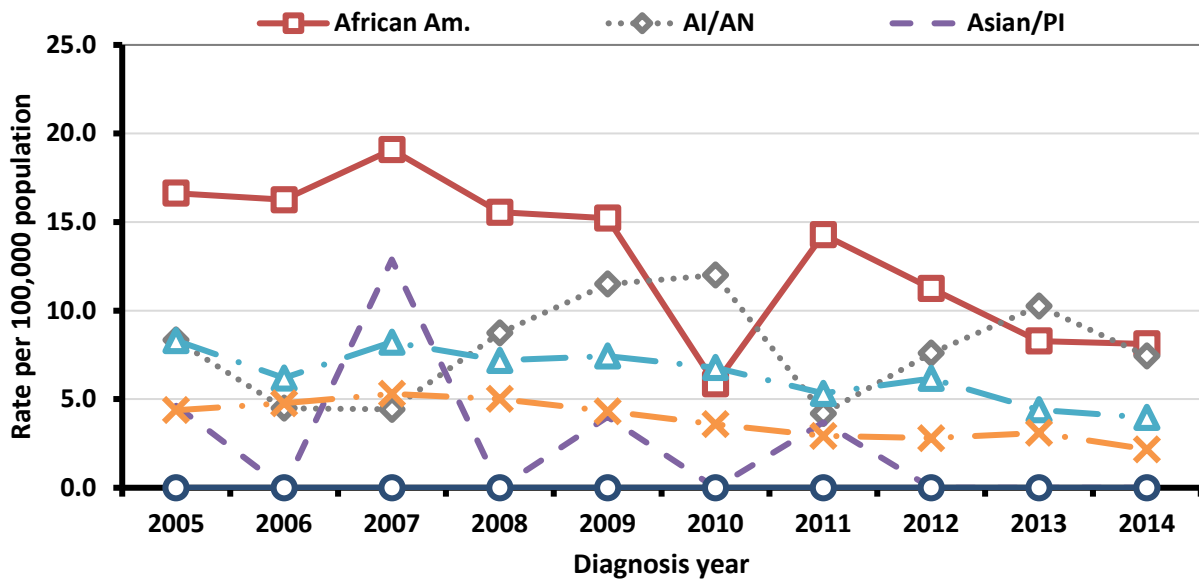


Figure 1.9. Rate of New Stage-3 HIV Infection (*i.e.*, AIDS) Among Adults & Adolescents per 100,000 population by Year of Diagnosis & Age at Diagnosis, New Mexico, 2005–2014

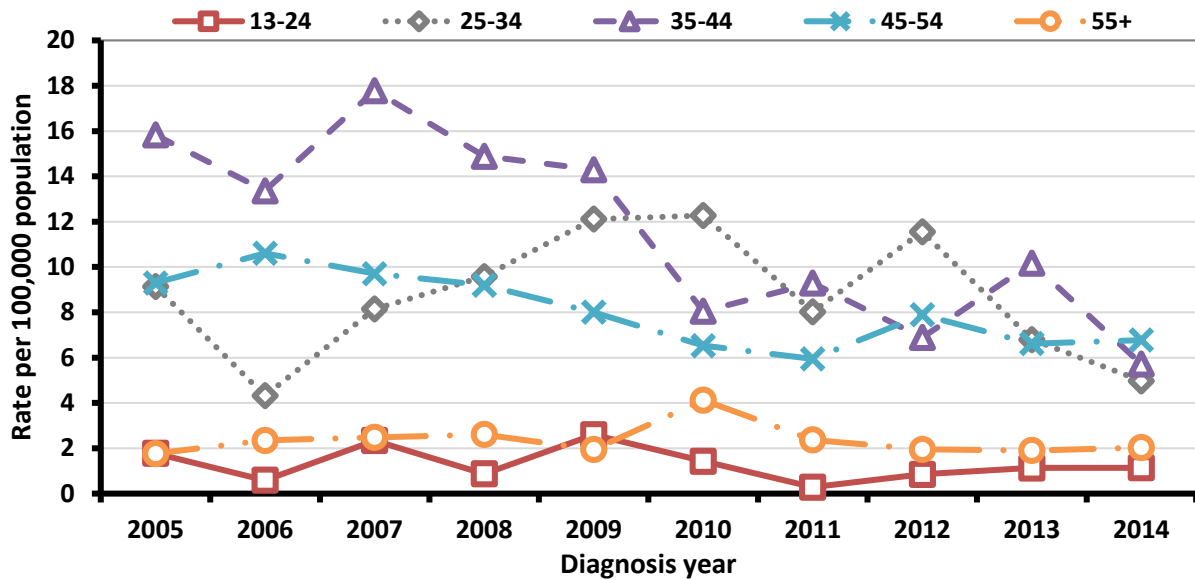


Figure 1.10. Proportion of New Stage-3 HIV Infection (*i.e.*, AIDS) Among Adult & Adolescent *Males* per 100,000 population by Year of Diagnosis & *Transmission Category*, New Mexico, 2005–2014

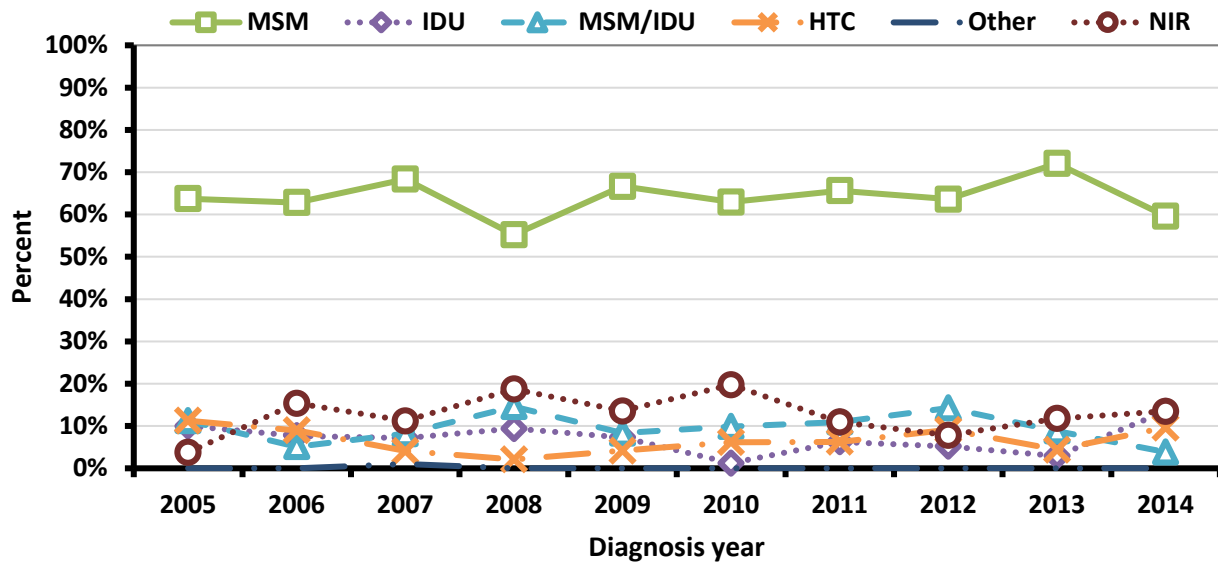


Figure 1.11. Proportion of New Stage-3 HIV Infection (*i.e.*, AIDS) Among Adult & Adolescent *Females* per 100,000 population by Year of Diagnosis & *Transmission Category*, New Mexico, 2005–2014

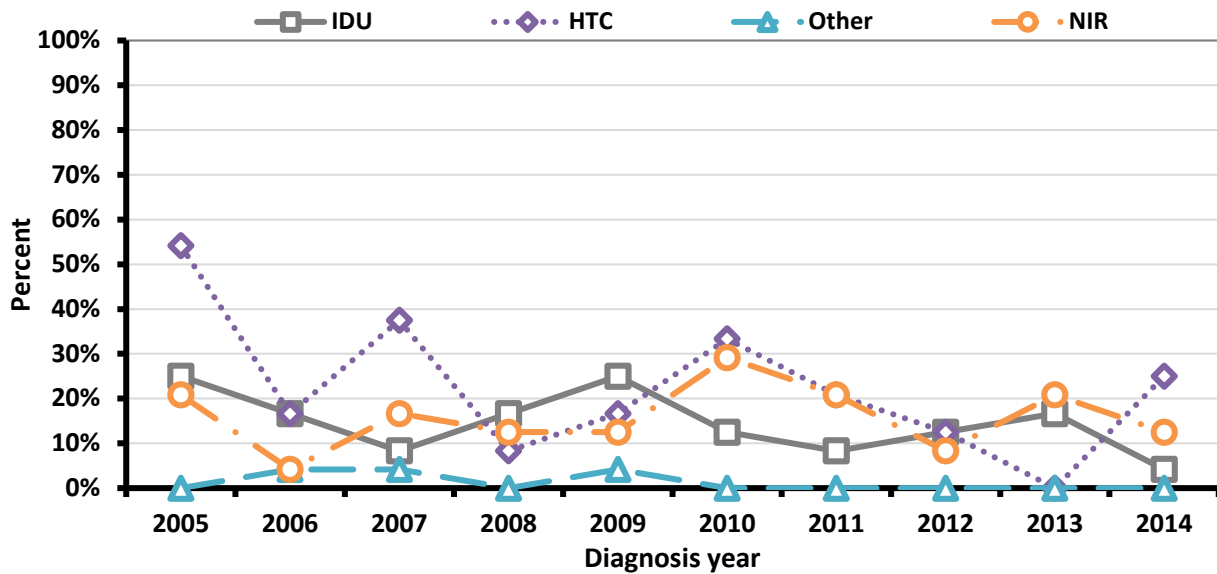


Figure 1.12. Rate of New Stage-3 HIV Infection (*i.e.*, AIDS) Among Adults & Adolescents per 100,000 population by Year of Diagnosis & Region, New Mexico, 2005–2014

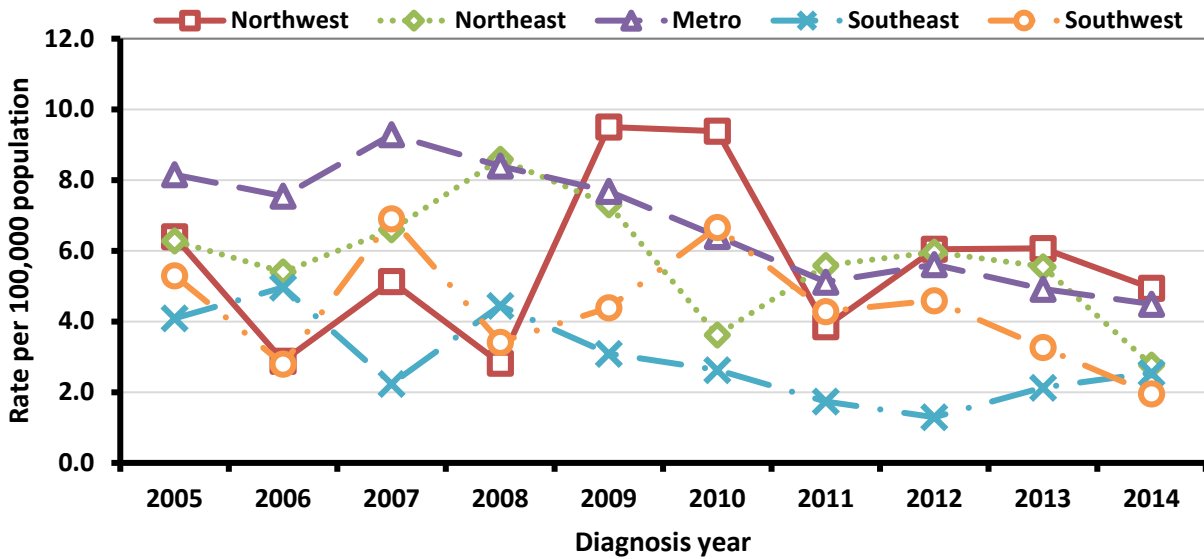


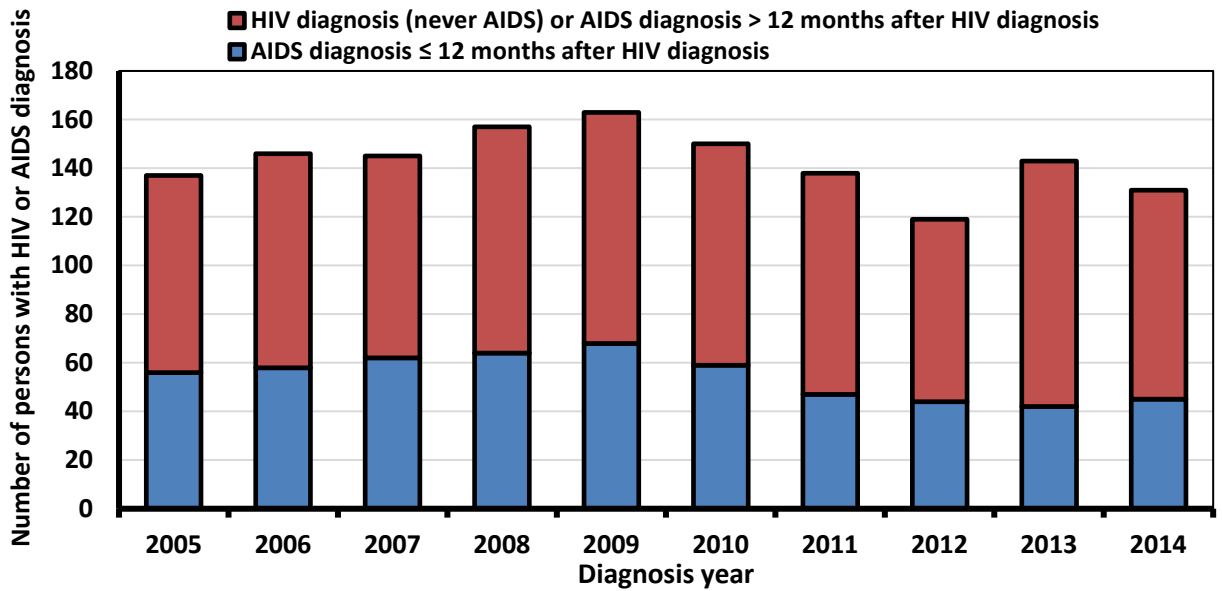
Table 1.3. Stage-3 HIV Infection (i.e., AIDS) Within 12 Months After a Diagnosis of HIV Infection Among Adults & Adolescents by Year of HIV Diagnosis & Selected Characteristics, New Mexico, 2010—2014

	2011			2013			2013			2014		
	# of HIV Diagnoses	# Stage-3 (AIDS) within 12 Months of HIV Diagnosis	% within group*	# of HIV Diagnoses	# Stage-3 (AIDS) within 12 Months of HIV Diagnosis	% within group*	# of HIV Diagnoses	# Stage-3 (AIDS) within 12 Months of HIV Diagnosis	% within group*	# of HIV Diagnoses	# Stage-3 (AIDS) within 12 Months of HIV Diagnosis	% within group*
TOTAL	138	47	34%	119	44	37%	143	42	29%	131	45	34%
SEX												
Male	118	42	36%	109	42	39%	124	37	30%	116	39	34%
Female	20	5	25%	10	2	20%	19	5	26%	15	6	40%
RACE/ETHNICITY												
African Am.	7	2	29%	2	0	0%	6	1	17%	7	1	14%
AI/AN	21	5	24%	20	7	35%	21	6	29%	28	12	43%
Asian/PI	1	1	100%	0	0	--	1	0	0%	0	0	--
Hispanic	73	28	38%	67	27	40%	79	22	28%	65	23	35%
White	32	9	28%	28	9	32%	35	12	34%	30	9	30%
Multi-race	4	2	50%	2	1	50%	1	1	100%	1	0	0%
AGE, years												
13-24	23	0	0%	20	2	10%	32	3	9%	23	1	4%
25-34	45	15	33%	41	16	39%	45	14	31%	48	10	21%
35-44	37	16	43%	28	10	36%	31	14	45%	27	13	48%
45-54	20	7	35%	24	12	50%	22	8	36%	22	13	59%
55+	13	9	69%	6	4	67%	13	3	23%	11	8	73%
TRANSMISSION CATEGORY												
MALE												
MSM	82	27	33%	70	27	39%	91	27	30%	81	22	27%
IDU	9	3	33%	6	1	17%	5	1	20%	10	6	60%
MSM/IDU	10	5	50%	11	5	45%	13	3	23%	4	1	25%
HRH	5	2	40%	10	5	50%	5	2	40%	9	4	44%
Other	0	0	--	0	0	--	0	0	--	0	0	--
NIR & NRR	12	5	42%	12	4	33%	10	4	40%	12	6	50%
FEMALE												
IDU	6	1	17%	2	0	0%	4	1	25%	1	1	100%
HRH	9	2	22%	6	1	17%	9	0	0%	9	3	33%
Other	1	0	--	0	0	--	0	0	--	0	0	--
NIR & NRR	4	2	50%	2	1	50%	6	4	67%	5	2	40%
REGION												
Northwest	21	6	29%	18	6	33%	17	7	41%	26	10	38%
Northeast	18	8	44%	23	10	43%	27	9	33%	17	5	29%
Metro	65	23	35%	50	20	40%	67	15	22%	66	23	35%
Southeast	5	2	40%	5	1	20%	7	4	57%	7	2	29%
Southwest	29	8	28%	23	7	30%	25	7	28%	15	5	33%

NOTE: Due to rounding, percentages may not total to 100%.

* Percentages represent the proportion of persons with the characteristic category from the total respective subgroup (e.g., the numerator was the number of male or females with a new HIV diagnosis and IDU divided by a denominator that was the total number of males or females, respectively).

Figure 1.16. Stage-3 HIV Infection (*i.e.*, AIDS) within 12 Months After a Diagnosis of HIV Infection Among Adults & Adolescents by Year of HIV Diagnosis, New Mexico, 2005—2014



NEW MEXICO
HIV | HEPATITIS | STD
 ONLINE RESOURCE GUIDE

Info and resources on HIV, STD, Viral Hepatitis, and Harm Reduction

NEW MEXICO HIV | HEPATITIS | STD ONLINE RESOURCE GUIDE

NMHIVGUIDE.ORG

Info and resources on HIV, STD, Viral Hepatitis, and Harm Reduction

SECTION 2: Persons Living with Diagnosed of HIV Infection or with Diagnosis of Stage-3 HIV Infection (*i.e.*, AIDS)

Table 2.1. Adults & Adolescents Living with HIV or Stage-3 HIV Infection (*i.e.*, AIDS) by Selected Characteristics, Year-end 2014, New Mexico

	HIV			Stage 3 (AIDS)			Total		
	N	Rate	% of total	N	Rate	% of total	N	Rate	% of total
TOTAL	1,361	78.5	41%*	1,970	113.6	59%*	3,331	192.1	100%
SEX									
Male	1,166	136.5	86%	1,758	205.8	89%	2,924	342.2	88%
Female	195	22.2	14%	212	24.1	11%	407	46.3	12%
RACE/ETHNICITY									
African/Am.	106	286.9	8%	104	281.4	5%	210	568.3	6%
AI/AN	119	80.6	9%	154	104.2	8%	273	184.8	8%
Asian/PI	11	36.9	1%	12	40.3	1%	23	77.2	1%
Hispanic	643	82.2	47%	862	110.1	44%	1,505	192.3	45%
White	462	62.7	34%	799	108.4	41%	1,261	171.1	38%
Multi-race	20	--	1%	39	--	2%	59	--	2%
AGE, years									
13-24	83	23.7	6%	17	4.9	1%	100	28.6	3%
25-34	317	112.7	23%	145	51.5	7%	462	164.2	14%
35-44	337	137.5	25%	379	154.7	19%	716	292.2	21%
45-54	360	135.5	26%	754	283.8	38%	1,114	419.3	33%
55+	264	44.6	19%	675	114.0	34%	939	158.6	28%
TRANSMISSION CATEGORY†									
MALE									
MSM	823	--	71%	1,239	--	70%	2,062	--	71%
IDU	64	--	5%	120	--	7%	184	--	6%
MSM/IDU	92	--	8%	198	--	11%	290	--	10%
HRH	56	--	5%	78	--	4%	134	--	5%
Other	2	--	0%	12	--	1%	14	--	0%
NIR or NRR	129	--	11%	111	--	6%	240	--	8%
FEMALE									
IDU	35	--	18%	58	--	27%	93	--	23%
HRH	104	--	53%	117	--	55%	221	--	54%
Other	4	--	2%	7	--	3%	11	--	3%
NIR or NRR	52	--	27%	30	--	14%	82	--	20%
REGION									
Northwest	131	72.0	10%	169	92.9	9%	300	164.9	9%
Northeast	241	95.4	18%	402	159.2	20%	643	254.6	19%
Metro	656	86.7	48%	1,004	132.7	51%	1,660	219.4	50%
Southeast	72	30.6	5%	121	51.3	6%	193	81.9	6%
Southwest	261	84.9	19%	274	89.2	14%	535	174.1	16%

NOTE: Due to rounding, percentages may not total to 100%.

* Percentage represent the proportion of persons with either HIV or HIV Stage-3 infections from the total persons living with a diagnosis of HIV or Stage-3 HIV infection for the analysis year.

† Percentages represent the proportion of persons with the risk behavior from the total respective subgroup (e.g., the numerator was the number of male or females with a new HIV diagnosis and IDU divided by a denominator that was the total number of males or females, respectively).

SECTION 3: New Diagnoses of HIV Infection and Persons Living with Diagnosed HIV by Region in New Mexico

Table 3.1. Diagnoses of HIV Infection Among Adults & Adolescents, 2010—2014, & Persons Living with HIV or Stage-3 HIV Infection (*i.e.*, AIDS), Year-end 2014, by selected characteristics — Northwest Region

	2010—2014 Diagnoses of HIV			2014 Persons Living with HIV or HIV Stage-3 (AIDS)						Total		
	N	Average Annual Rate	% of Total	HIV			HIV Stage-3 (AIDS)			N	Rate	% of Total
				N	Rate	% of Total	N	Rate	% of Total			
TOTAL	100	11.0	--	131	72.0	44%*	169	164.9	56%*	300	33.0	--
SEX												
Male	80	18.0	80%	111	124.9	85%	134	275.7	79%	245	55.1	82%
Female	20	4.3	20%	20	21.5	15%	35	59.1	21%	55	11.9	18%
RACE/ETHNICITY												
African Am.	0	0.0	0%	6	365.0	5%	5	669.1	3%	11	150.6	4%
AI/AN	76	17.3	76%	56	63.0	43%	91	165.4	54%	147	33.5	49%
Asian/PI	0	0.0	0%	0	0.0	0%	0	0.0	0%	0	0.0	0%
Hispanic	20	12.0	20%	50	147.1	38%	35	250.0	21%	85	50.9	28%
White	4	1.4	4%	19	33.9	15%	35	96.4	21%	54	18.7	18%
Multi-race	0	--	0%	0	--	0%	3	--	2%	3	--	1%
AGE, years												
13-24	11	5.4	11%	10	25.2	8%	2	30.2	1%	12	5.8	4%
25-34	45	28.8	45%	38	119.3	29%	14	163.3	8%	52	33.3	17%
35-44	21	15.5	21%	32	118.3	24%	49	299.5	29%	81	60.0	27%
45-54	18	12.1	18%	31	111.2	24%	62	333.6	37%	93	62.4	31%
55+	5	1.9	5%	20	36.1	15%	42	111.8	25%	62	23.6	21%
TRANSMISSION CATEGORY†												
MALE												
MSM	45	--	56%	64	--	58%	84	--	63%	148	--	60%
IDU	4	--	5%	9	--	8%	12	--	9%	21	--	9%
MSM/IDU	6	--	8%	9	--	8%	11	--	8%	20	--	8%
HRH	11	--	14%	8	--	7%	11	--	8%	19	--	8%
Other	0	--	0%	0	--	0%	2	--	1%	2	--	1%
NIR or NRR	14	--	18%	21	--	19%	14	--	10%	35	--	14%
FEMALE												
IDU	2	--	10%	3	--	15%	8	--	23%	11	--	20%
HRH	12	--	60%	12	--	60%	20	--	57%	32	--	58%
Other	0	--	0%	0	--	0%	1	--	3%	1	--	2%
NIR or NRR	6	--	30%	5	--	25%	6	--	17%	11	--	20%

NOTE: Due to rounding, percentages may not total to 100%.

* Percentage represent the proportion of persons with either HIV or HIV Stage-3 infections from the total persons living with a diagnosis of HIV or Stage-3 HIV infection for the analysis year.

† Percentages represent the proportion of persons with the risk behavior from the total respective subgroup (e.g., the numerator was the number of male or females with a new HIV diagnosis and IDU divided by a denominator that was the total number of males or females, respectively).

Table 3.2. Diagnoses of HIV Infection Among Adults & Adolescents, 2010—2014, & Persons Living with HIV or Stage-3 HIV Infection (i.e., AIDS), Year-end 2014, by selected characteristics — Northeast Region

	2010—2014 Diagnoses of HIV			2014 Persons Living with HIV or HIV Stage-3 (AIDS)						Total		
				HIV			HIV Stage-3 (AIDS)					
	N	Average Annual Rate	% of Total	N	Rate	% of Total	N	Rate	% of Total	N	Rate	% of Total
TOTAL	110	12.1	--	241	95.4	37%*	402	159.2	63%*	643	254.6	--
SEX												
Male	94	21.2	85%	212	170.5	88%	371	298.4	92%	583	469.0	91%
Female	16	3.5	15%	29	22.6	12%	31	24.2	8%	60	46.8	9%
RACE/ETHNICITY												
African Am.	7	95.8	6%	17	729.6	7%	13	557.9	3%	30	1,287.6	5%
AI/AN	7	1.6	6%	9	91.0	4%	9	91.0	2%	18	181.9	3%
Asian/PI	0	0.0	0%	3	84.3	1%	4	112.4	1%	7	196.6	1%
Hispanic	67	40.1	61%	102	76.0	42%	162	120.6	40%	264	196.6	41%
White	28	9.7	25%	106	103.4	44%	210	204.9	52%	316	308.3	49%
Multi-race	1	--	1%	4	--	2%	4	--	1%	8	--	1%
AGE, years												
13-24	20	9.7	18%	6	14.7	2%	0	0.0	0%	6	14.7	1%
25-34	37	23.7	34%	44	134.0	18%	24	73.1	6%	68	207.2	11%
35-44	24	17.8	22%	52	154.5	22%	51	151.6	13%	103	306.1	16%
45-54	22	14.8	20%	63	155.0	26%	173	425.7	43%	236	580.7	37%
55+	7	2.7	6%	76	72.7	32%	154	147.3	38%	230	220.1	36%
TRANSMISSION CATEGORY†												
MALE												
MSM	66	--	70%	161	--	76%	281	--	76%	442	--	76%
IDU	5	--	5%	14	--	7%	15	--	4%	29	--	5%
MSM/IDU	10	--	11%	17	--	8%	47	--	13%	64	--	11%
HRH	3	--	3%	6	--	3%	8	--	2%	14	--	2%
Other	0	--	0%	2	--	1%	1	--	0%	3	--	1%
NIR or NRR	10	--	11%	12	--	6%	19	--	5%	31	--	5%
FEMALE												
IDU	2	--	13%	7	--	24%	7	--	23%	14	--	23%
HRH	8	--	50%	14	--	48%	14	--	45%	28	--	47%
Other	1	--	6%	0	--	0%	2	--	6%	2	--	3%
NIR or NRR	5	--	31%	8	--	28%	8	--	26%	16	--	27%

NOTE: Due to rounding, percentages may not total to 100%.

* Percentage represent the proportion of persons with either HIV or HIV Stage-3 infections from the total persons living with a diagnosis of HIV or Stage-3 HIV infection for the analysis year.

† Percentages represent the proportion of persons with the risk behavior from the total respective subgroup (e.g., the numerator was the number of male or females with a new HIV diagnosis and IDU divided by a denominator that was the total number of males or females, respectively).

Table 3.3. Diagnoses of HIV Infection Among Adults & Adolescents, 2010—2014, & Persons Living with HIV or Stage-3 HIV Infection (*i.e.*, AIDS), Year-end 2014, by selected characteristics — Metropolitan Region

	2010—2014 Diagnoses of HIV			2014 Persons Living with HIV or HIV Stage-3 (AIDS)						Total		
	Average		% of Total	HIV			HIV Stage-3 (AIDS)					
	N	Annual Rate		N	Rate	% of Total	N	Rate	% of Total	N	Rate	% of Total
TOTAL	317	8.5	--	656	86.7	40%*	1,004	132.7	60%*	1,660	219.4	--
SEX												
Male	291	16.0	92%	583	157.7	89%	915	247.5	91%	1,498	405.2	90%
Female	26	1.4	8%	73	18.9	11%	89	23.0	9%	162	41.9	10%
RACE/ETHNICITY												
African Am.	16	16.3	5%	63	311.4	10%	64	316.4	6%	127	627.8	8%
AI/AN	30	15.7	9%	47	119.0	7%	49	124.1	5%	96	243.1	6%
Asian/PI	1	1.1	0%	5	26.9	1%	7	37.7	1%	12	64.6	1%
Hispanic	172	10.4	54%	297	86.7	45%	449	131.1	45%	746	217.9	45%
White	93	5.5	29%	234	69.7	36%	413	123.0	41%	647	192.7	39%
Multi-race	5	--	2%	10	--	2%	22	--	2%	32	--	2%
AGE, years												
13-24	59	8.0	19%	42	29.0	6%	6	4.1	1%	48	33.1	3%
25-34	106	16.7	33%	150	115.3	23%	70	53.8	7%	220	169.1	13%
35-44	76	13.4	24%	162	143.5	25%	186	164.8	19%	348	308.3	21%
45-54	48	7.7	15%	183	153.0	28%	388	324.3	39%	571	477.3	34%
55+	28	2.4	9%	119	47.8	18%	354	142.1	35%	473	189.9	28%
TRANSMISSION CATEGORY†												
MALE												
MSM	211	--	73%	443	--	76%	667	--	73%	1,110	--	74%
IDU	17	--	6%	21	--	4%	50	--	5%	71	--	5%
MSM/IDU	22	--	8%	46	--	8%	102	--	11%	148	--	10%
HRH	12	--	4%	22	--	4%	37	--	4%	59	--	4%
Other	-	--	0%	-	--	0%	6	--	1%	6	--	0%
NIR & NRR	29	--	10%	51	--	9%	53	--	6%	104	--	7%
FEMALE												
IDU	7	--	27%	13	--	18%	24	--	27%	37	--	23%
HRH	11	--	42%	40	--	55%	52	--	58%	92	--	57%
Other	-	--	0%	2	--	3%	2	--	2%	4	--	2%
NIR & NRR	8	--	31%	18	--	25%	11	--	12%	29	--	18%

NOTE: Due to rounding, percentages may not total to 100%.

* Percentage represent the proportion of persons with either HIV or HIV Stage-3 infections from the total persons living with a diagnosis of HIV or Stage-3 HIV infection for the analysis year.

† Percentages represent the proportion of persons with the risk behavior from the total respective subgroup (e.g., the numerator was the number of male or females with a new HIV diagnosis and IDU divided by a denominator that was the total number of males or females, respectively).

Table 3.4. Diagnoses of HIV Infection Among Adults & Adolescents, 2010—2014, & Persons Living with HIV or Stage-3 HIV Infection (*i.e.*, AIDS), Year-end 2014, by selected characteristics — Southeast Region

	2010—2014 Diagnoses of HIV			2014 Persons Living with HIV or HIV Stage-3 (AIDS)						Total		
				HIV			HIV Stage-3 (AIDS)					
	N	Average Annual Rate	% of Total	N	Rate	% of Total	N	Rate	% of Total	N	Rate	% of Total
	TOTAL	32	2.8	--	72	30.6	37%*	121	51.3	65%*	193	81.9
SEX												
Male	27	4.6	84%	54	45.3	75%	105	88.0	87%	159	133.3	82%
Female	5	0.9	16%	18	15.5	25%	16	13.7	13%	34	29.2	18%
RACE/ETHNICITY												
African Am.	2	6.0	6%	7	101.8	10%	11	160.0	9%	18	261.8	9%
AI/AN	-	0.0	0%	-	0.0	0%	1	38.7	1%	1	38.7	1%
Asian/PI	-	0.0	0%	1	41.6	1%	-	0.0	0%	1	41.6	1%
Hispanic	23	4.6	72%	35	33.4	49%	50	47.7	41%	85	81.2	44%
White	7	1.2	22%	28	23.5	39%	57	47.9	47%	85	71.4	44%
Multi-race	-	--	0%	1	--	1%	2	--	2%	3	--	2%
AGE												
13-24	12	4.7	38%	8	15.4	11%	3	5.8	2%	11	21.1	6%
25-34	8	4.1	25%	17	41.7	24%	12	29.5	10%	29	71.2	15%
35-44	5	3.1	16%	16	49.1	22%	28	85.9	23%	44	135.0	23%
45-54	3	1.7	9%	18	51.8	25%	37	106.5	31%	55	158.3	28%
55+	4	1.1	13%	13	17.2	18%	41	54.3	34%	54	71.5	28%
TRANSMISSION CATEGORY†												
MALE												
MSM	19	--	70%	37	--	69%	63	--	60%	100	--	63%
IDU	-	--	0%	5	--	9%	16	--	15%	21	--	13%
MSM/IDU	1	--	4%	5	--	9%	14	--	13%	19	--	12%
HRH	3	--	11%	4	--	7%	3	--	3%	7	--	4%
Other	-	--	0%	-	--	0%	1	--	1%	1	--	1%
NIR & NRR	4	--	15%	3	--	6%	8	--	8%	11	--	7%
FEMALE												
IDU	2	--	40%	2	--	11%	4	--	25%	6	--	18%
HRH	2	--	40%	15	--	83%	9	--	56%	24	--	71%
Other	-	--	0%	1	--	6%	1	--	6%	2	--	6%
NIR & NRR	1	--	20%	-	--	0%	2	--	13%	2	--	6%

NOTE: Due to rounding, percentages may not total to 100%.

* Percentage represent the proportion of persons with either HIV or HIV Stage-3 infections from the total persons living with a diagnosis of HIV or Stage-3 HIV infection for the analysis year.

† Percentages represent the proportion of persons with the risk behavior from the total respective subgroup (e.g., the numerator was the number of male or females with a new HIV diagnosis and IDU divided by a denominator that was the total number of males or females, respectively).

Table 3.5. Diagnoses of HIV Infection Among Adults & Adolescents, 2010—2014, & Persons Living with HIV or Stage-3 HIV Infection (*i.e.*, AIDS), Year-end 2014, by selected characteristics — Southwest Region

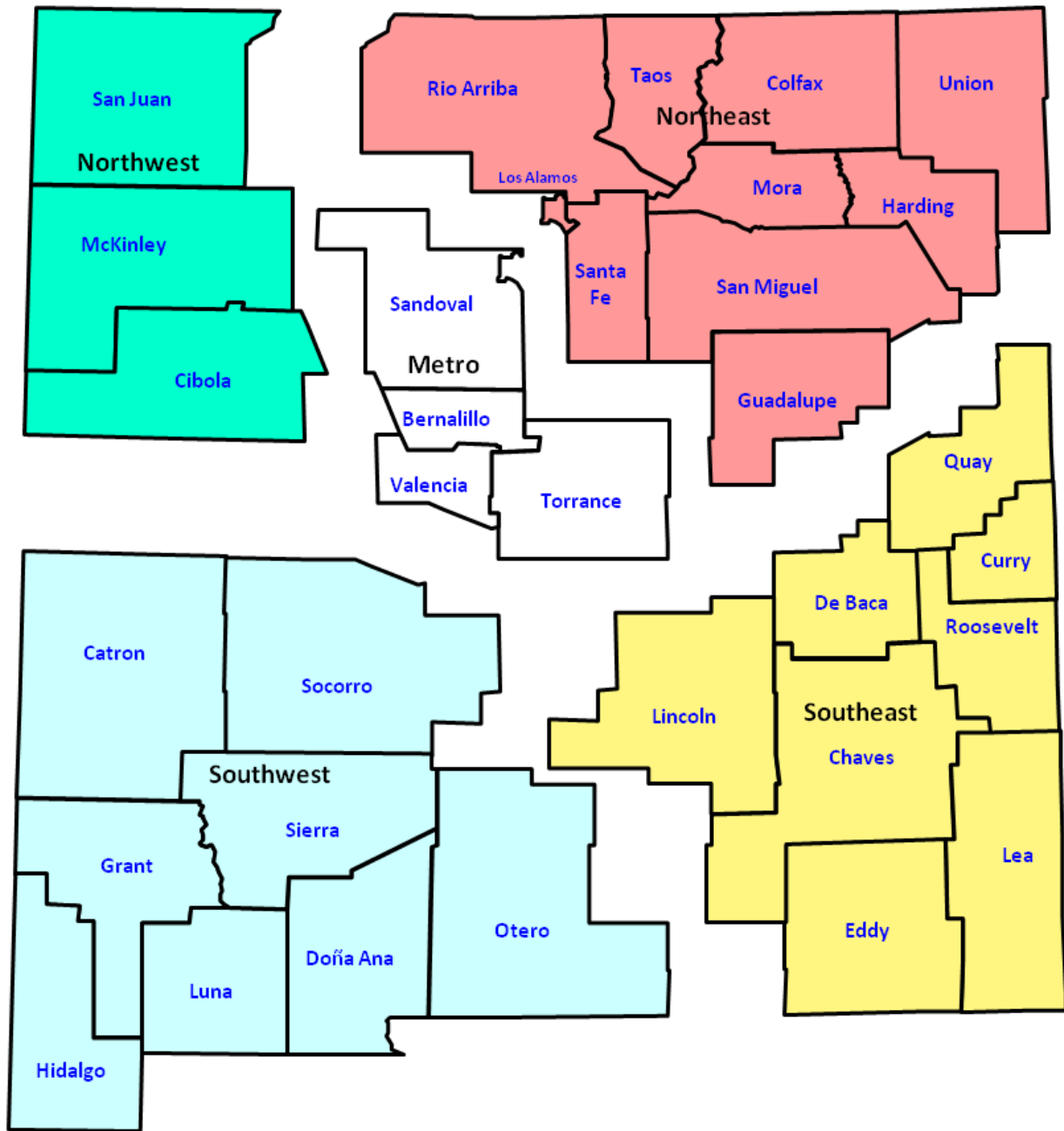
	2009—2014 Diagnoses of HIV			2014 Persons Living with HIV or HIV Stage-3 (AIDS)								
				HIV			HIV Stage-3 (AIDS)			Total		
	N	Average Annual Rate	% of Total	N	Rate	% of Total	N	Rate	% of Total	N	Rate	% of Total
TOTAL	122	8.0	--	261	84.9	49%*	274	89.2	51%*	535	174.1	--
SEX												
Male	103	13.7	84%	206	135.3	79%	233	153.0	85%	439	288.3	82%
Female	19	2.5	16%	55	35.5	21%	41	26.4	15%	96	61.9	18%
RACE/ETHNICITY												
African Am.	6	21.6	5%	13	221.4	5%	4	68.1	1%	17	289.5	3%
AI/AN	2	6.0	2%	7	102.1	3%	1	14.6	0%	8	116.7	1%
Asian/PI	2	10.9	2%	2	51.5	1%	11	283.5	4%	13	335.1	2%
Hispanic	80	9.8	66%	159	95.1	61%	166	99.3	61%	325	194.4	61%
White	27	4.3	22%	75	60.7	29%	8	6.5	3%	83	67.2	16%
Multi-race	5	--	4%	5	--	2%	84	--	31%	89	--	17%
AGE												
13-24	23	6.5	19%	17	23.4	7%	6	8.3	2%	23	31.7	4%
25-34	38	16.6	31%	68	148.2	26%	25	54.5	9%	93	202.7	17%
35-44	28	14.3	23%	75	193.0	29%	65	167.3	24%	140	360.3	26%
45-54	20	8.9	16%	65	151.9	25%	94	219.7	34%	159	371.5	30%
55+	13	2.5	11%	36	33.6	14%	84	78.3	31%	120	111.8	22%
TRANSMISSION CATEGORY†												
MALE												
MSM	66	--	64%	118	--	57%	144	--	62%	262	--	60%
IDU	8	--	8%	15	--	7%	27	--	12%	42	--	10%
MSM/IDU	6	--	6%	15	--	7%	24	--	10%	39	--	9%
HRH	9	--	9%	16	--	8%	19	--	8%	35	--	8%
Other	0	--	0%	0	--	0%	2	--	1%	2	--	0%
NIR or NRR	14	--	14%	42	--	20%	17	--	7%	59	--	13%
FEMALE												
IDU	2	--	11%	10	--	18%	15	--	37%	25	--	26%
HRH	10	--	53%	23	--	42%	22	--	54%	45	--	47%
Other	0	--	0%	1	--	2%	1	--	2%	2	--	2%
NIR or NRR	7	--	37%	21	--	38%	3	--	7%	24	--	25%

NOTE: Due to rounding, percentages may not total to 100%.

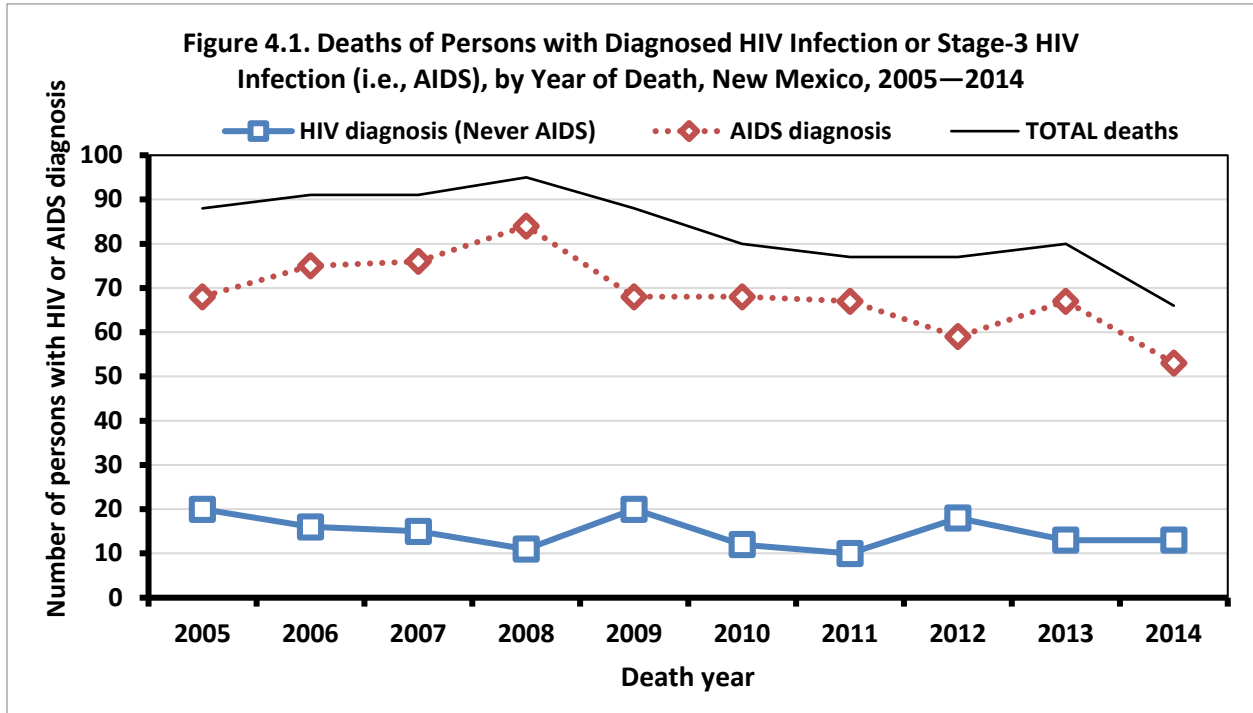
* Percentage represent the proportion of persons with either HIV or HIV Stage-3 infections from the total persons living with a diagnosis of HIV or Stage-3 HIV infection for the analysis year.

† Percentages represent the proportion of persons with the risk behavior from the total respective subgroup (e.g., the numerator was the number of male or females with a new HIV diagnosis and IDU divided by a denominator that was the total number of males or females, respectively).

Designation of Health Regions in New Mexico for Data Presentation – 2014.



SECTION 4: Deaths and Survival after a Diagnosis of HIV Infection or Diagnosis of Stage-3 HIV Infection (i.e., AIDS)



RISK CATEGORY

Sex with male Yes No Unknown
 Sex with female Yes No Unknown
 Injected non-prescription drugs Yes No Unknown

Received clotting factor before diagnosis Yes No Unknown
 If yes, specify Factor VIII Factor IX Other

Received transfusion of blood components before diagnosis Yes No Unknown
 If yes, specify year First _____ Last _____

Received tissue/organ transplant or artificial insemination before diagnosis Yes No Unknown
 If yes, specify year _____

Worked in health-care or clinical laboratory setting before diagnosis Yes No Unknown
 If yes, specify year _____

HETEROSEXUAL RELATIONS WITH ANY OF THE FOLLOWING (applies only to those reporting heterosexual contact):

Injection drug user Yes No Unknown
 Bisexual male Yes No Unknown

Person with hemophilia/coagulation disorder Yes No Unknown
 Transfusion recipient Yes No Unknown

Transplant recipient Yes No Unknown
 Person with documented HIV Infection or AIDS Yes No Unknown

Table 4.1. Survival for More Than 12, 36, and 60 Months After a Stage-3 (AIDS) Classification by Selected Characteristics, New Mexico, 2005—2009

	Total Number Stage 3 (AIDS) diagnoses	Period of survival after Stage-3 HIV infection (i.e., AIDS) diagnosis					
		> 12 months		> 36 months		> 60 months	
		N	% Survived	N	% Survived	N	% Survived
TOTAL	852	781	92%	742	87%	706	83%
SEX							
Male	745	690	93%	656	88%	625	84%
Female	107	91	85%	86	80%	81	76%
RACE/ETHNICITY							
African Am.	54	50	93%	44	81%	43	80%
AI/AN	105	94	90%	84	80%	76	72%
Asian/PI	9	9	100%	9	100%	7	78%
Hispanic	347	320	92%	310	89%	295	85%
White	321	293	91%	281	88%	271	84%
Multi-race	16	15	94%	14	88%	14	88%
AGE							
13-24	53	52	98%	52	98%	52	98%
25-34	196	182	93%	174	89%	166	85%
35-44	333	308	92%	295	89%	283	85%
45-54	199	184	92%	171	86%	158	79%
55+	71	55	77%	50	70%	47	66%
TRANSMISSION CATEGORY*							
MALE							
MSM	480	454	95%	438	91%	425	89%
IDU	58	52	90%	48	83%	42	72%
MSM/IDU	92	87	95%	82	89%	73	79%
HRH	43	41	95%	36	84%	34	79%
Other	2	2	100%	2	100%	2	100%
NIR or NRR	70	54	77%	50	71%	49	70%
FEMALE							
IDU	32	29	91%	26	81%	24	75%
HRH	49	44	90%	43	88%	41	84%
Other	3	2	67%	2	67%	2	67%
NIR or NRR	23	16	70%	15	65%	14	61%
YEAR of STAGE 3 (AIDS) CLASSIFICATION							
2005	180	171	95%	163	91%	150	83%
2006	152	135	89%	126	83%	123	81%
2007	185	169	91%	161	87%	156	84%
2008	165	151	92%	144	87%	135	82%
2009	170	155	91%	148	87%	142	84%

NOTE: Due to rounding, percentages may not total to 100%.

* Percentages represent the proportion of persons with the risk behavior from the total respective gender group (i.e., denominator was the total number of males or females for the respective analysis year).

HIV & AIDS DIAGNOSIS HISTORY

Earliest HIV diagnosis date _____ Test type(s) EIA/ELISA WB Multispot detectable viral load _____ copies/ml
 Residence at HIV diagnosis _____ Facility of HIV diagnosis _____
(City, State, Zip code) (Name, City, State, Zip code)

Ever progressed to AIDS Yes No Unknown (if No or Unknown, skip this section)
 Earliest AIDS diagnosis date _____ CD4 count < 200 _____ CD4 % < 14 _____
(CD4 count result) (CD4 % result)
 Residence at AIDS diagnosis _____ Facility of AIDS diagnosis _____
(City, State, Zip code) (Name, City, State, Zip code)
 Opportunistic Illness(es) • Yes • None If yes, list OIs _____

DATA SOURCES

HIV CASE SURVEILLANCE DATA

All cases of a persons with HIV infection or Stage-3 HIV infection (*i.e.*, AIDS) who are diagnosed or treated in New Mexico are required by the New Mexico Administrative Code (Section 7.4.3) to be reported to HIVSEP. All laboratory-confirmed positive HIV antibody tests, tests for HIV RNA or HIV bDNA (*i.e.*, viral loads), tests to detect HIV proteins, any positive HIV culture, or any other tests or conditions indicative of HIV infection or Stage-3 HIV infection, including opportunistic infections, are reportable to HIVSEP. AIDS has been a statutorily reportable condition in the state of New Mexico since 1988; HIV has been reportable since 1998. As of February 29th, 2013, all CD4 lymphocyte counts and percents are also reportable.

Initially established in 1983 to track people newly diagnosed with AIDS, the surveillance system was expanded in 1998 to include HIV reporting. Standardized case report forms are used to collect sociodemographic information, transmission risk categories, laboratory and clinical information, perinatal exposure, vital status, and referrals for treatment or services. To allow for reporting delays, 2014 data are considered complete at the end of December 2015.

POPULATION DATA

New Mexico population data presented here were obtained via the NMDOH IBIS-Q query module (<https://ibis.health.state.nm.us/query/builder/pop/PopMain/Count.html>) and represent revised estimates from the University of New Mexico, Geospatial and Population Studies (GPS; <http://www.unm.edu/~bber>). GPS conducts economic and demographic research and analysis related to New Mexico and provides population estimates for New Mexico based on 2010 U.S. Census Tracts. Intercensal population estimates were re-calculated after the release of the 2010 census, so they will not match earlier 2000 postcensal estimates from GPS. Race/ethnicity categorizations were completed by NMDOH.

STRENGTHS AND LIMITATIONS

HIV surveillance reports may not be representative of all persons infected with HIV because not all infected persons have been tested and reported to HIVSEP. Some persons infected with HIV may have been tested anonymously; these persons are not included in this report. It is also possible that some tested and HIV positive persons have not been reported to HIVSEP. The data presented in this report provide a minimum estimate of New Mexico residents known to be infected with HIV.

Due to the ongoing nature of HIV data collection, readers may notice differences between the statistics reported across annual reports. These differences result from a variety of factors including: the national interstate de-duplication process (*i.e.*, Routine Interstate De-duplication Report), eHARS database conversions and updates, data quality checks, and occasional redefinition of terms. As it is difficult for HIVSEP to monitor migration of individuals into and out of New Mexico, the most recent known residential address may not reflect current residency.

Another consideration involves incidence estimation. To monitor the epidemic, it is ideal to estimate 'true incidence' using the date of infection. There exist specific laboratory methods that can estimate the date of infection; however, these methods are not available in New Mexico. Therefore, because the actual date of infection for an individual is not known, this report emphasizes new diagnoses of HIV rather than incidence of HIV infection.

Persons who have tested anonymously or who tested outside New Mexico and are not currently seeking care in New Mexico may not have been reported to HIVSEP. Thus, though these data may be used to monitor the HIV epidemic, they may be influenced by testing behavior, treatment outcomes, and access to medical care or services that follow HIV infection. Despite these limitations, HIV surveillance data is considered to be more than 85% complete.² For this reason, epidemiologic data are one of the major sources to inform both HIV prevention and HIV care planning.

Lastly, in some instances, analyses in this report were conducted using a small number of events (*e.g.*, the number of diagnoses of HIV infection within a certain age group). A small number of events can lead to concerns about statistical reliability and validity. Over time, small numbers may fluctuate due to random variation, rather than true changes in the epidemic. Readers are cautioned against drawing formal conclusions from data included in this report that may be subject to reliability and validity concerns. Please contact HIVSEP with any questions or concerns you may have about any of the estimates published in this report.

TECHNICAL NOTES

NEW DIAGNOSES OF HIV INFECTION

These data include persons newly diagnosed with HIV infection during a calendar year. This may include people that meet the CDC surveillance definition for Stage-3 (AIDS) at the time they were initially diagnosed with HIV infection (*i.e.*, concurrent diagnosis). The number of new HIV diagnoses in New Mexico includes only persons who were first reported with HIV infection while residents of New Mexico. Persons moving to New Mexico already diagnosed with HIV infection were excluded if they were previously reported in another state. Age-group assignment was based on the person's age at the time of diagnosis.

PERSONS LIVING WITH DIAGNOSED HIV INFECTION

These data include persons living with diagnosed HIV infection, including those with a Stage 3 (AIDS) classification, as of December 31, 2014. To be included in these data, persons living with HIV infection must have been alive and living in New Mexico as of December 31, 2014; residence at time of HIV diagnosis or Stage 3 (AIDS) classification was not considered. The most recent known residential address was used to determine whether persons were included. Age-group assignment was based on the person's age as of December 31, 2014. Persons reported to HIVSEP are assumed alive until their death is reported to HIVSEP. The NMDOH Bureau of Vital

² Hall HI, Song R, Gerstle JE III, Lee LM (on behalf of the HIV/AIDS Reporting System Evaluation Group) (2006) Assessing the completeness of reporting of human immunodeficiency virus diagnoses in 2002–2003: capture-recapture methods. *Am J Epidemiol.* 164:391–397.

Records and Health Statistics provides annual mortality data to update vital status and to determine cause of death.

RACE AND ETHNICITY

HIVSEP collects race and ethnicity data according to the U.S. Department of Health and Human Services Office of Management and Budget (OMB) standards.³ These standards provide five categories for data collection regarding race: American Indian or Alaska Native, Asian, Black or African American, Native Hawaiian or Other Pacific Islander, and White. Given the composition of New Mexico's population, HIVSEP combines Native Hawaiian or Other Pacific Islander with Asian. This modification of the OMB standards minimizes the impact of small numbers on the stability of published estimates. The OMB standards also provide two categories for ethnicity (independent of race): Hispanic or Latino, and Not Hispanic or Latino. In this report, race and ethnicity groups were calculated according to NMDOH guidelines. These guidelines combine race and ethnicity into a single construct for data presentation. Persons of Hispanic or Latino ethnicity were classified as Hispanic without consideration of reported race. Persons not of Hispanic or Latino ethnicity were classified according to race.

HIVSEP recognizes that categories in this classification are social-political constructs and does not interpret them as being biologic or anthropologic in nature; rather, the categories provide a common language for uniformity and comparability in the collection and use of data on race and ethnicity.

TRANSMISSION CATEGORIES

HIVSEP summarizes a person's possible HIV risk factors using a hierarchical order of possible risks for transmission. Persons whose transmission category is classified as MSM (male-to-male sexual contact) include men who report sexual contact with other men and men who report sexual contact with both men and women. Persons whose transmission category is classified as Probable Heterosexual Contact (HRH) include persons who report heterosexual contact with a person known to have, or to be at high risk for, HIV infection (e.g., heterosexual sexual contact with bi-sexual males, injection drug users, persons with hemophilia, HIV-infected transfusion recipient, or other HIV-infected persons with unknown risk) as well as persons who report heterosexual contact while simultaneously denying all other risk factors. Persons whose transmission category is classified as IDU are persons who report injecting illicit or nonprescription drugs. Except for men who report sexual contact with other men and injection drug use, persons with more than one reported risk factor are classified according to the category listed first in the hierarchy. Men who report sexual contact with other men and injection drug use comprise a separate transmission risk category, MSM/IDU. Persons with no reported exposure to HIV through any of the categories in the hierarchy are classified as "no risk factor reported or identified" (NRR or NIR). The "other" category includes hemophilia, blood transfusion, and perinatal exposure.

³ [Federal Register \(October 30, 1997\) Revisions to the Standards for the Classification of Federal Data on Race and Ethnicity \(Notice of Decision\) 26:210, 58782.](#)

NEW MEXICO PUBLIC HEALTH REGIONS

The Northwest Region is comprised of Cibola, McKinley, and San Juan counties. The Northeast Region is comprised of Colfax, Guadalupe, Harding, Mora, Los Alamos, Rio Arriba, San Miguel, Santa Fe, Taos, and Union counties. Bernalillo, Sandoval, Tarrant, and Valencia counties have been designated as the Metropolitan Region. The Southeast Region is comprised of Chaves, Curry, De Baca, Eddy, Lea, Lincoln, Quay, and Roosevelt counties. Catron, Dona Ana, Grant, Hidalgo, Luna, Otero, Sierra, and Socorro counties comprise the Southwest Region.

RATES

Rates per 100,000 population were calculated using population denominators provided by the Geospatial and Population Studies (GPS), located at the University of New Mexico. Rates were calculated by dividing the total number of events of interest (e.g., new diagnoses of HIV infection) during the time period of interest (e.g., a calendar year) by the population for that time period, and multiplying by 100,000.

CORRECTIONAL FACILITIES AND OTHER INSTITUTIONS

Persons imprisoned in a state or county correctional or detention facility, or who were housed in a residential facility (e.g., drug treatment facility), were included in the data presented unless otherwise noted.

LAB DATA

<input type="checkbox"/> EIA/ELISA	Collection date _____	Result <input type="checkbox"/> Positive <input type="checkbox"/> Negative
<input type="checkbox"/> Western Blot	Collection date _____	Result <input type="checkbox"/> Positive <input type="checkbox"/> Negative <input type="checkbox"/> Indeterminate
<input type="checkbox"/> Multispot	Collection date _____	Result <input type="checkbox"/> HIV-1 <input type="checkbox"/> HIV-2 <input type="checkbox"/> HIV-1 p24 Ag
<input type="checkbox"/> Viral Load	Collection date _____	Result _____ copies/ml <u>OR</u> <input type="checkbox"/> Detected (qualitative)
<input type="checkbox"/> CD4	Collection date _____	Result _____ ct _____ %

Current Physician _____ Performing Laboratory _____

ACRONYMS

AA	African American
AI/AN	American Indian/Alaskan Native
AIDS	Acquired Immunodeficiency Syndrome
Asian/PI	Asian or Pacific Islander
CDC	Centers for Disease Control and Prevention
DPT	Disease Prevention Team
eHARS	Enhanced HIV/AIDS Reporting System
GPS	Geospatial and Population Studies
HARS	HIV/AIDS Reporting System
HIV	Human Immunodeficiency Virus
HRH	High-risk heterosexual
IDU	Injection Drug User
MSM	Men who have sex with men
MSM/IDU	Male injection drug users who have sex with men
NIR/NRR	No identified risk/No reported risk
NM	New Mexico
NMDOH	New Mexico Department of Health
STI	Sexually Transmitted Infection

DEFINITIONS

eHARS (ENHANCED HIV/AIDS REPORTING SYSTEM): A database that uses web-based technology for expanded, document-based collection of HIV-related surveillance data.

HRH (PROBABLE HETEROSEXUAL CONTACT): Persons who have any history of heterosexual contact with a partner having any history of injection drug use; a bi-sexual male (applies to females only); a person having any history of hemophilia/coagulation disorder; a person having any history of receiving a blood transfusion; a person having any history of receiving an organ transplant; or, a person known to have HIV infection. Alternatively, persons with a history of heterosexual contact and no other risk for HIV infection.

HIV (HUMAN IMMUNODEFICIENCY VIRUS): Diagnosis of HIV infection is defined by either 1) a confirmed positive result on a screening test for HIV antibody (e.g., reactive enzyme immunoassay), followed by a positive result on a confirmatory test for HIV antibody (e.g., Western blot or immunofluorescence antibody test); or 2) a positive result or a detectable quantity on a virologic test (e.g., polymerase chain reaction, neutralization assay, or culture).

IDU (INJECTION DRUG USER): Persons who have any history of receiving an injection, either self-administered or given by another person, of a drug that was not prescribed by a physician for this person. This includes illicit drugs as well as prescription drugs (e.g., estrogen, testosterone, anabolic steroids, or human growth hormone) that were not prescribed for this person.

MSM (MEN WHO HAVE SEX WITH MEN): Men who have a history of sexual contact with men or with both men and women.

NIR (NO IDENTIFIED RISK): Persons who have no identified history of risk of exposure to HIV, as defined by the CDC. Persons reported with no identified risk can be under investigation, have incomplete histories because they have died, have refused to divulge their history, or have been lost to follow up.

OTHER (OTHER RISK): Persons who have a history of hemophilia or coagulation disorder, receipt of blood transfusion, blood components or tissue, or persons who have any of the adolescent/adult risk factors for HIV infection which occurred before age 13 years or who were born to a mother with HIV infection.

STAGE-3 HIV INFECTION (i.e., AIDS): Diagnosis of Stage-3 HIV Infection (*i.e.*, AIDS) is defined by a confirmed HIV positive test along with either 1) a CD4 positive lymphocyte count < 200; 2) a CD4 positive lymphocyte count < 14% of total lymphocytes; or 3) any of 26 opportunistic infections indicative of Stage 3 (AIDS).

NMDOH RESOURCES

HIV SURVEILLANCE & EPIDEMIOLOGY PROGRAM

Conducts state-wide surveillance and analysis of HIV.

(505) 476-3515

<http://nmhealth.org/about/erd/ideb/haep/>

HIV PREVENTION PROGRAM

Supports community planning and HIV prevention and HIV testing activities across the state, including training, capacity building, funding, and oversight.

(505) 476-3612

<http://nmhealth.org/about/phd/idb/happ/>

HIV SERVICES PROGRAM

Supports a statewide array of providers in the Health Management Alliance (HMA) network that provide case management, medical care and support services for people with HIV/AIDS.

(505) 476-3628

NEW MEXICO HIV, STD AND HEPATITIS RESOURCE GUIDE

www.nmhivguide.org

COMMUNITY PARTNERS

NEW MEXICO HIV PREVENTION COMMUNITY PLANNING AND ACTION GROUP (CPAG)

This group is co-chaired by representatives from NMDOH, the community, and persons living with HIV. The CPAG collaborates with NMDOH to develop a statewide Comprehensive HIV Prevention Plan

www.nmcpag.org/

HIV SERVICE PROVIDERS (HSP)

HSPs are non-profit organizations that offer comprehensive services including medical and case management, support, and prevention for HIV

NEW MEXICO AIDS SERVICES (NMAS)

Based in Albuquerque and serves the metro area and northwestern New Mexico
(888) 882-2437

www.nmas.net

UNIVERSITY OF NEW MEXICO HEALTH SCIENCES CENTER, TRUMAN STREET CLINIC

Based in Albuquerque and serves the metro area and northwestern New Mexico in collaboration with New Mexico AIDS Services

(505) 272-1312

<http://www.unmtruman.com/>

FIRST NATIONS COMMUNITY HEALTH SOURCE

Based in Albuquerque and serves the American Indian/Alaska Native community
(505) 262-2481

www.fnch.org

SOUTHWEST CARE CENTER (SWCC)

Based in Santa Fe and serves northeastern New Mexico
(888) 320-8200

www.southwestcare.org

ALIANZA OF NEW MEXICO

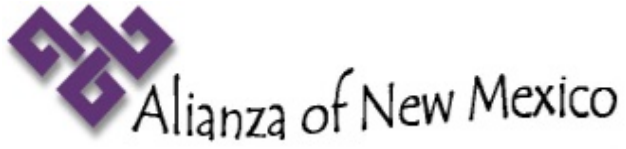
Based in Roswell and serves southern New Mexico
(800) 957-1995

<http://www.alianzaofnewmexico.org/>

COMMUNITY COLLABORATIVE CARE (CCC)

Based in Las Cruces and serves south-central New Mexico
(575) 528-5001

<http://nmhealth.org/about/phd/region/sw/cccp/>



This page intentionally blank.