

Pertussis Report for Dates 01/01/2012 to 10/22/2012 (Internal Use Only)

Includes Confirmed and Probable Cases for Both Closed and Open Investigations

Table 1: Investigations of Pertussis by Case Status for 2012

Case Status				Total Cases
Confirmed		Probable		
Closed	Open	Closed	Open	
513	3	92	4	612

*This report is prepared for internal use by the Infectious Disease Epidemiology Bureau (IDEB) using the New Mexico Electronic Disease Surveillance System (NM-EDSS). Data are provisional and may change significantly upon the completion of ongoing investigations. Data for prior years are also subject to minor revisions due to corrections or identification of historical cases.

Questions regarding the content of this report should be referred to the IDEB Surveillance Team at 505-827-0006.

Pertussis Report for Dates 01/01/2012 to 10/22/2012 (Internal Use Only)

Includes Confirmed and Probable Cases for Both Closed and Open Investigations

Table 2: Pertussis by Case Status for August, September, and October

Month of Earliest Report Date						Total Cases
August		September		October		
Confirmed	Probable	Confirmed	Probable	Confirmed	Probable	
103	9	73	20	58	9	272

Pertussis Report for Dates 01/01/2012 to 10/22/2012 (Internal Use Only)

Includes Confirmed and Probable Cases for Both Closed and Open Investigations

Table 3: Open and Closed Investigations for August, September, and October

Month of Earliest Report Date					Total Cases
August	September		October		
Closed	Closed	Open	Closed	Open	
112	91	2	62	5	272

Pertussis Report for Dates 01/01/2012 to 10/22/2012 (Internal Use Only)

Includes Confirmed and Probable Cases for Both Closed and Open Investigations

Table 4: Pertussis Cases by County

County Name	Case Number	Percent of Total Cases	Incidence per 100,000
Bernalillo County	348	56.9	52.3
Chaves County	8	1.3	12.2
Cibola County	1	0.2	3.7
Colfax County	2	0.3	14.6
Dona Ana County	10	1.6	4.8
Eddy County	1	0.2	1.9
Grant County	2	0.3	6.8
Lea County	8	1.3	12.3
Los Alamos County	3	0.5	16.7
Luna County	1	0.2	4.0
McKinley County	19	3.1	26.6
Mora County	1	0.2	20.5
Quay County	1	0.2	11.1
Rio Arriba County	5	0.8	12.4
San Juan County	11	1.8	8.4
San Miguel County	35	5.7	119.2
Sandoval County	12	2.0	9.1
Santa Fe County	50	8.2	34.6
Sierra County	6	1.0	50.2
Socorro County	3	0.5	16.8
Torrance County	1	0.2	6.1

Includes Confirmed and Probable Cases for Both Closed and Open Investigations

Table 4: Pertussis Cases by County

County Name	Case Number	Percent of Total Cases	Incidence per 100,000
Unknown	1	0.2	.
Valencia County	83	13.6	108.1

Includes Confirmed and Probable Cases for Both Closed and Open Investigations

Table 5: Pertussis Cases by Age Group

Age Group	Case Number	Percent
< 1 Year	60	9.8
1 to 5 Years	76	12.4
6 to 10 Years	113	18.5
11 to 18 Years	135	22.1
19 to 65 Years	201	32.8
65 Years or Older	26	4.2
Unknown	1	0.2

*This report is prepared for internal use by the Infectious Disease Epidemiology Bureau (IDEB) using the New Mexico Electronic Disease Surveillance System (NM-EDSS). Data are provisional and may change significantly upon the completion of ongoing investigations. Data for prior years are also subject to minor revisions due to corrections or identification of historical cases.

Questions regarding the content of this report should be referred to the IDEB Surveillance Team at 505-827-0006.

Includes Confirmed and Probable Cases for Both Closed and Open Investigations

Table 6: Pertussis Cases by Race/Ethnicity

Race/Ethnicity	Case Number	Percent
American Indian or Alaska Native	44	7.2
Asian or Pacific Islander	3	0.5
Black or African American	23	3.8
Hispanic	374	61.1
White	143	23.4
Multi-race	8	1.3
Unknown/Missing	17	2.8

***This report is prepared for internal use by the Infectious Disease Epidemiology Bureau (IDEB) using the New Mexico Electronic Disease Surveillance System (NM-EDSS). Data are provisional and may change significantly upon the completion of ongoing investigations. Data for prior years are also subject to minor revisions due to corrections or identification of historical cases.**

Questions regarding the content of this report should be referred to the IDEB Surveillance Team at 505-827-0006.

Pertussis Report for Dates 01/01/2012 to 10/22/2012 (Internal Use Only)

Includes Confirmed and Probable Cases for Both Closed and Open Investigations

Table 7: Cases of Pertussis by Race/Ethnicity

Race	Ethnicity			
	Hispanic or Latino	Not Hispanic or Latino	Unknown/Missing	Total
American Indian or Alaska Native	6 0.98	36 5.88	2 0.33	44 7.19
Asian or Pacific Islander	1 0.16	2 0.33	0 0.00	3 0.49
Black or African American	5 0.82	17 2.78	1 0.16	23 3.76
White	273 44.61	141 23.04	2 0.33	416 67.97
Multi-race	5 0.82	3 0.49	0 0.00	8 1.31
Unknown/Missing	102 16.67	7 1.14	9 1.47	118 19.28
Total	392 64.05	206 33.66	14 2.29	612 100.00

*This report is prepared for internal use by the Infectious Disease Epidemiology Bureau (IDEB) using the New Mexico Electronic Disease Surveillance System (NM-EDSS). Data are provisional and may change significantly upon the completion of ongoing investigations. Data for prior years are also subject to minor revisions due to corrections or identification of historical cases.

Questions regarding the content of this report should be referred to the IDEB Surveillance Team at 505-827-0006.

Includes Confirmed and Probable Cases for Both Closed and Open Investigations

Table 8: Pertussis Cases by Sex

Gender	Case Number	Percent
Female	347	56.7
Male	263	43.0
Unknown	2	0.3

*This report is prepared for internal use by the Infectious Disease Epidemiology Bureau (IDEB) using the New Mexico Electronic Disease Surveillance System (NM-EDSS). Data are provisional and may change significantly upon the completion of ongoing investigations. Data for prior years are also subject to minor revisions due to corrections or identification of historical cases.

Questions regarding the content of this report should be referred to the IDEB Surveillance Team at 505-827-0006.

Includes Confirmed and Probable Cases for Both Closed and Open Investigations

Table 9: Hospitalizations of Pertussis Cases

Yes		No	
Count	Percent	Count	Percent
36	6.0	566	94.0

*This report is prepared for internal use by the Infectious Disease Epidemiology Bureau (IDEB) using the New Mexico Electronic Disease Surveillance System (NM-EDSS). Data are provisional and may change significantly upon the completion of ongoing investigations. Data for prior years are also subject to minor revisions due to corrections or identification of historical cases.

Questions regarding the content of this report should be referred to the IDEB Surveillance Team at 505-827-0006.

Includes Confirmed and Probable Cases for Both Closed and Open Investigations

Table 10: Cases of Pertussis by Hospitalization and Age Group

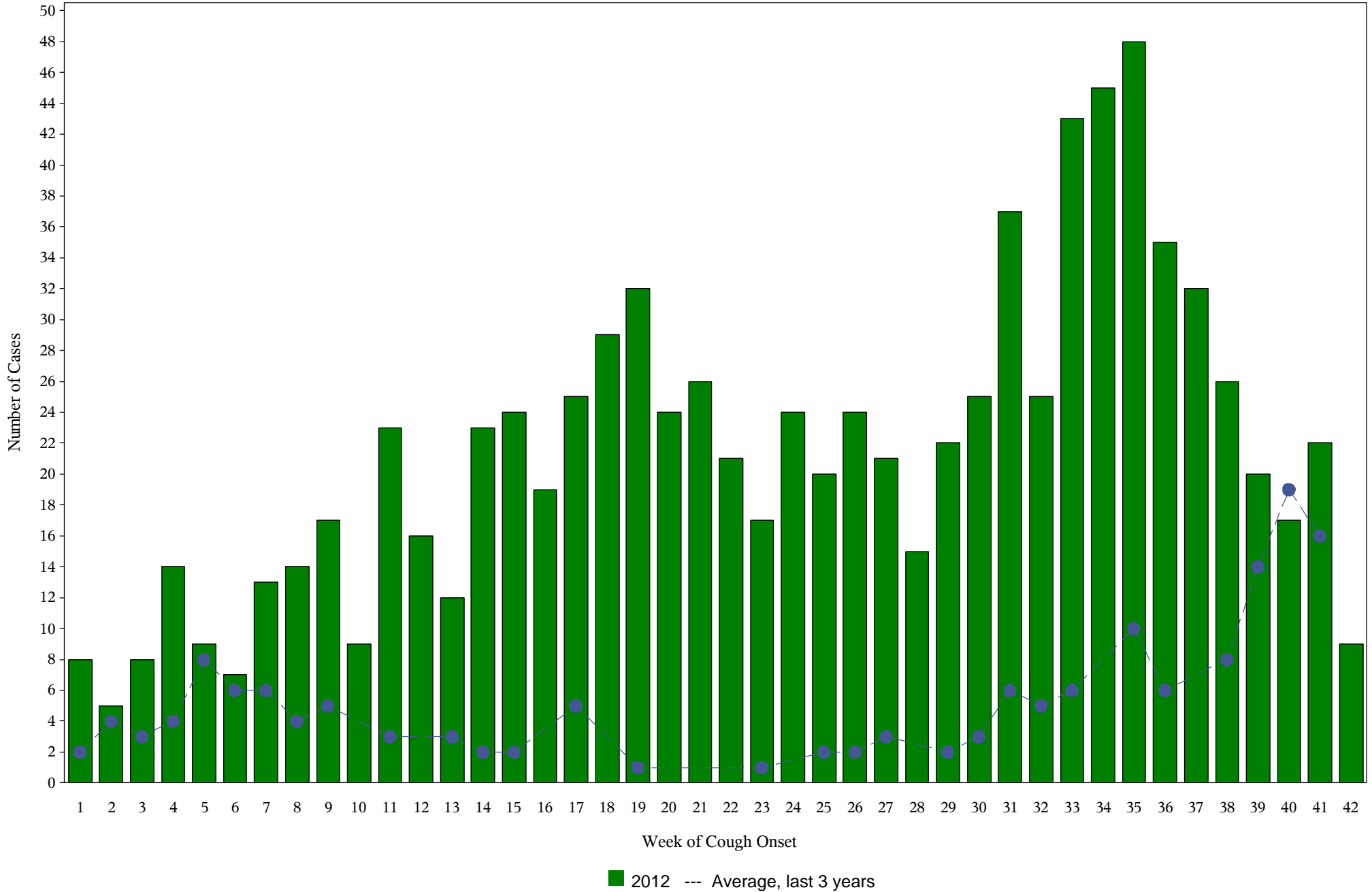
Age Group	Hospitalized Cases			
	Yes	No	Unknown	Total
< 1 Year	20 33.33	37 61.67	3 5.00	60
1 to 5 Years	2 2.63	73 96.05	1 1.32	76
6 to 10 Years	0 0.00	110 97.35	3 2.65	113
11 to 18 Years	2 1.48	132 97.78	1 0.74	135
19 to 65 Years	7 3.48	192 95.52	2 1.00	201
65 Years or Older	5 19.23	21 80.77	0 0.00	26
Unknown	0 0.00	1 100.00	0 0.00	1
Total	36	566	10	612

*This report is prepared for internal use by the Infectious Disease Epidemiology Bureau (IDEB) using the New Mexico Electronic Disease Surveillance System (NM-EDSS). Data are provisional and may change significantly upon the completion of ongoing investigations. Data for prior years are also subject to minor revisions due to corrections or identification of historical cases.

Questions regarding the content of this report should be referred to the IDEB Surveillance Team at 505-827-0006.

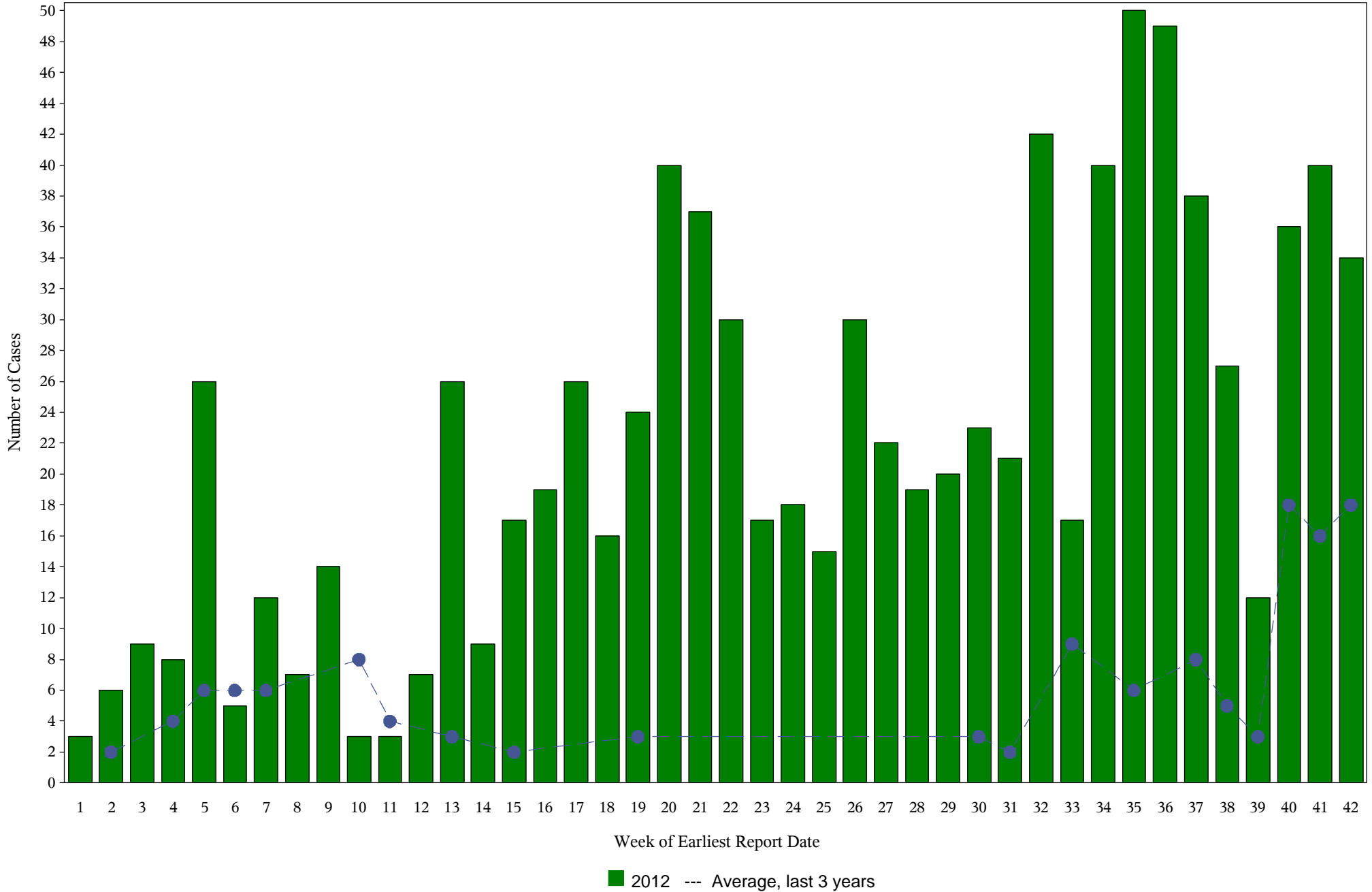
Pertussis Report for Dates 01/01/2012 to 10/22/2012 (Internal Use Only)

Case Counts of Pertussis by Week of Cough Onset for 2012



Pertussis Report for Dates 01/01/2012 to 10/22/2012 (Internal Use Only)

Case Counts of Pertussis by Week of Earliest Report Date for 2012



PHD Workload Indicators

Table 11: Completed Investigations of Pertussis by Case Status

Jurisdiction	Case Status					
	Confirmed	Probable	Suspect	Not a Case	Unknown	Total
Region 1	95	35	29	53	1	213
Region 2	87	9	2	25	0	123
Region 3	310	49	22	75	0	456
Region 4	12	5	4	20	1	42
Region 5	19	2	8	9	0	38
Unknown	1	0	0	0	0	1
Total	524	100	65	182	2	873

*NW Tribal Cases are included in Region 1

PHD Workload Indicators

Table 12: Case Counts and Contact Prophylaxis by Jurisdiction for Completed Investigations

Jurisdiction	Cases August*	Cases September*	Cases October*	Cases YTD*	Contacts Pro-Phylaxed August	Contacts Pro-Phylaxed September	Contacts Pro-Phylaxed October	Contacts Pro-Phylaxed YTD
Statewide	169	119	79	873	396	327	144	2140
Region 1	27	11	4	213	61	15	3	517
Region 2	18	14	9	123	90	50	51	535
Region 3	96	88	59	456	158	242	83	841
Region 4	24	4	5	42	46	10	7	80
Region 5	4	2	2	38	41	10	.	162
Unknown	.	.	.	1	.	.	.	5

*Includes All Case Statuses (Confirmed, Probable, Suspect, Not a Case)

**NW Tribal Cases are included in Region 1

PHD Workload Indicators

Table 13: Number of Contacts Prophylaxed by Month for Completed Investigations

	January	February	March	April	May	June	July
Region 1	0	15	32	191	113	62	25
Region 2	12	10	1	.	222	41	58
Region 3	21	13	14	20	111	69	110
Region 4	.	.	.	8	.	8	1
Region 5	.	38	20	4	2	43	4
Unknown	5	.
Total	33	76	67	223	448	228	198

	August	September	October	Total
Region 1	61	15	3	517
Region 2	90	50	51	535
Region 3	158	242	83	841
Region 4	46	10	7	80
Region 5	41	10	.	162
Unknown	.	.	.	5
Total	396	327	144	2140

*Includes All Case Statuses (Confirmed, Probable, Suspect, Not a Case)

**NW Tribal Cases are included in Region 1

PHD Workload Indicators

Table 14: Prophylaxis Summary Statistics for Completed Investigations, YTD

Jurisdiction	Avg # of Contacts Prophylaxed per Case	Median # of Contacts Prophylaxed per Case	Minimum Prophylaxed Contacts	Maximum Prophylaxed Contacts
Statewide	3	2	0	54
Region 1	3	1	0	54
Region 2	5	4	0	29
Region 3	2	1	0	43
Region 4	2	2	0	6
Region 5	5	4	0	14
Unknown	5	5	5	5

*Includes All Case Statuses (Confirmed, Probable, Suspect, Not a Case)

**NW Tribal Cases are included in Region 1

***Cases where prophylaxis information was missing were not included in this analysis.

PHD Workload Indicators

Table 15: Summary Statistics for Time Spent Completing Pertussis Investigations

Jurisdiction	Avg # Days to Complete Investigation	Median # Days to Complete Investigation	Minimum Days to Complete Investigation	Maximum Days to Complete Investigation	Total Days Spent Investigating Pertussis
Statewide	7.9	6.0	0.0	63.0	6318
Region 1	9.2	6.0	0.0	63.0	1710
Region 2	6.4	6.0	0.0	24.0	727.0
Region 3	7.5	6.0	0.0	56.0	3161
Region 4	9.2	9.0	0.0	20.0	366.0
Region 5	9.6	9.0	0.0	25.0	354.0
Unknown	0.0	0.0	0.0	0.0	0.0

*Includes All Case Statuses (Confirmed, Probable, Suspect, Not a Case)

**NW Tribal Cases are included in Region 1

***Excludes cases that were missing time measurements (e.g. investigation start date, notification sent date).