



## Influenza Surveillance Report

May 21, 2010

### **Outpatient Influenza-Like Illness (ILI) Surveillance**

- For the week ending 5/15/10, visits to doctors for influenza-like illness (ILI) in New Mexico decreased slightly from 2.0% to 1.5% (Figure 1).
- The Northeast region had the same percentage of outpatient visits for ILI. The Southeast region percentage increased slightly. The percentage of outpatient visits for ILI in all other regions decreased (Figure 2). The percentages of outpatient visits for ILI in New Mexico regions were: 0.3% in Northeast, 2.6% in Northwest, 2.7% in Central, 0.4% in Southwest and 3.1% in Southeast.

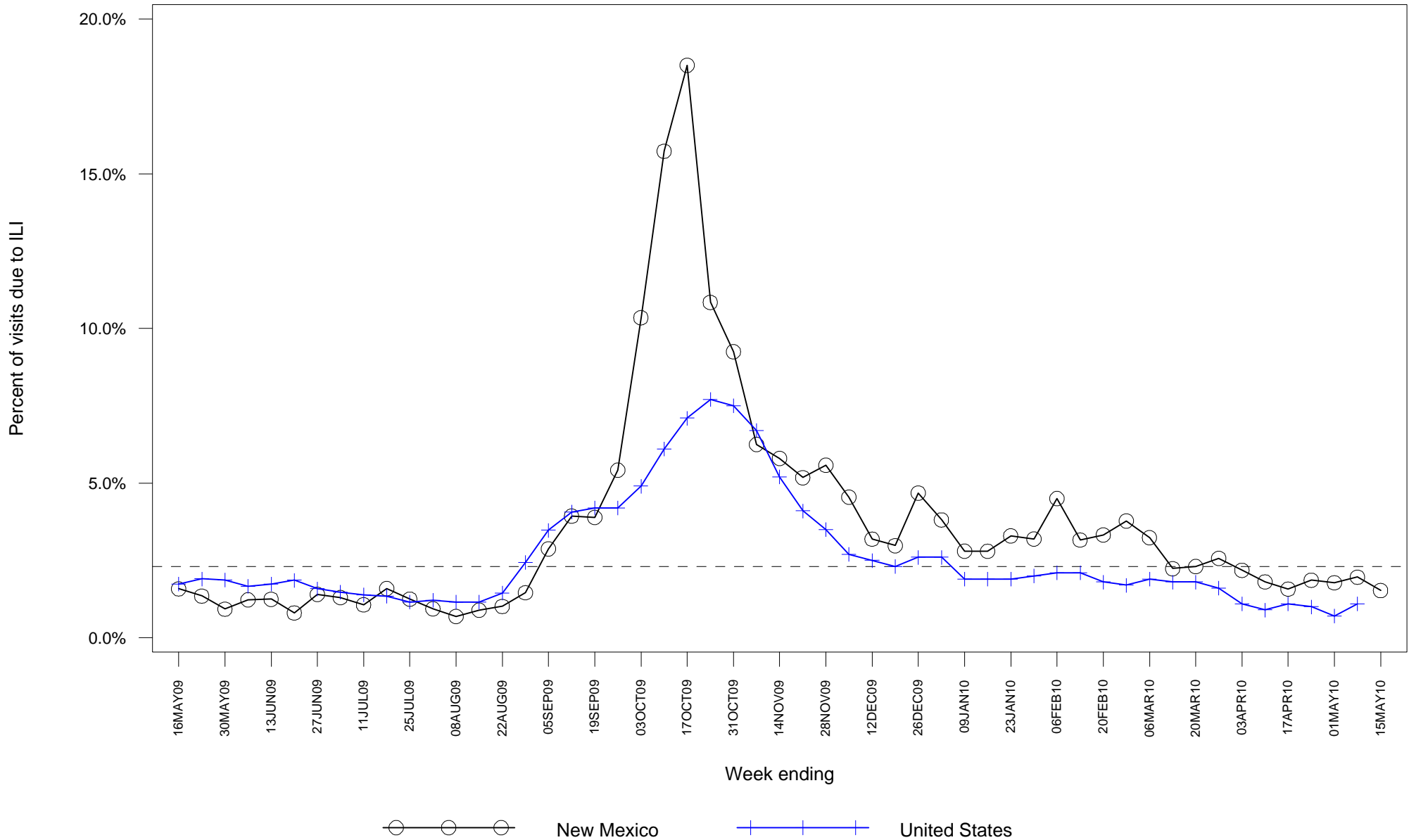
### **Laboratory-confirmed Influenza Hospitalization Surveillance**

- Starting 10/12/09 the case definition for laboratory-confirmed influenza hospitalizations was expanded to include patients with positive rapid influenza and influenza fluorescent antibody tests. Previously the case definition only considered positive RT-PCR and viral culture results as confirmatory. This change was made to more accurately represent the burden of influenza-related hospitalizations in New Mexico.
- As of 5/15/10, there have been 1056 hospitalizations related to laboratory-confirmed influenza infection in New Mexico, an increase of 1 in the seasonal total from last week. Figure 3 shows number of hospitalizations by week of admission. Table 1 summarizes hospitalizations by county of residence.

### **Laboratory-confirmed Influenza Death Surveillance**

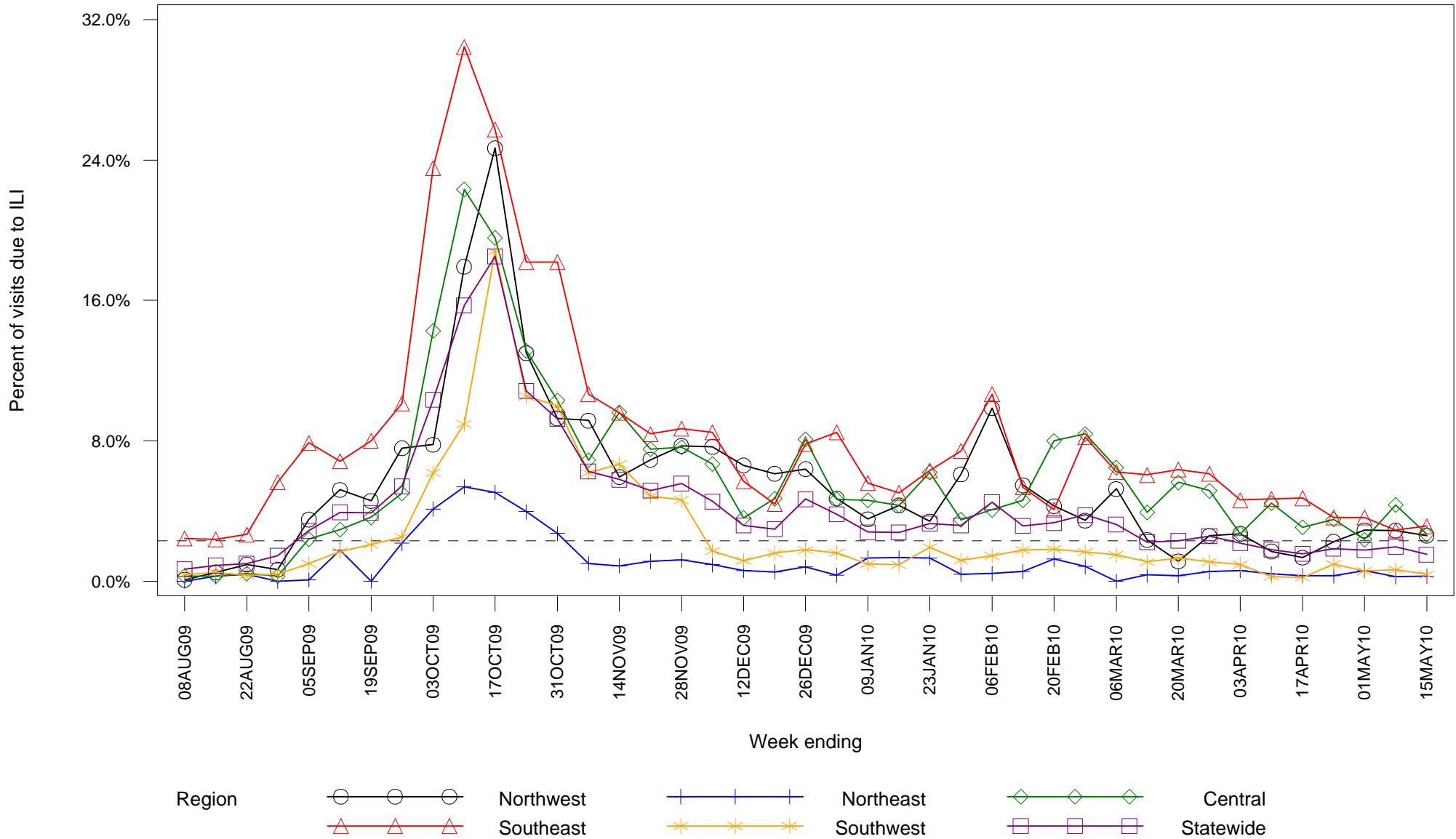
- As of 5/15/10, there have been 58 deaths related to laboratory-confirmed influenza infection in New Mexico. There are 2 newly reported deaths that occurred in April: a 72 year-old female from McKinley county with chronic medical conditions and a 73 year-old female from Taos county with chronic medical conditions. Table 2 summarizes deaths by county of residence.

**Figure 1: Percent of sentinel provider outpatient visits due to influenza-like illness (ILI)  
New Mexico and United States**



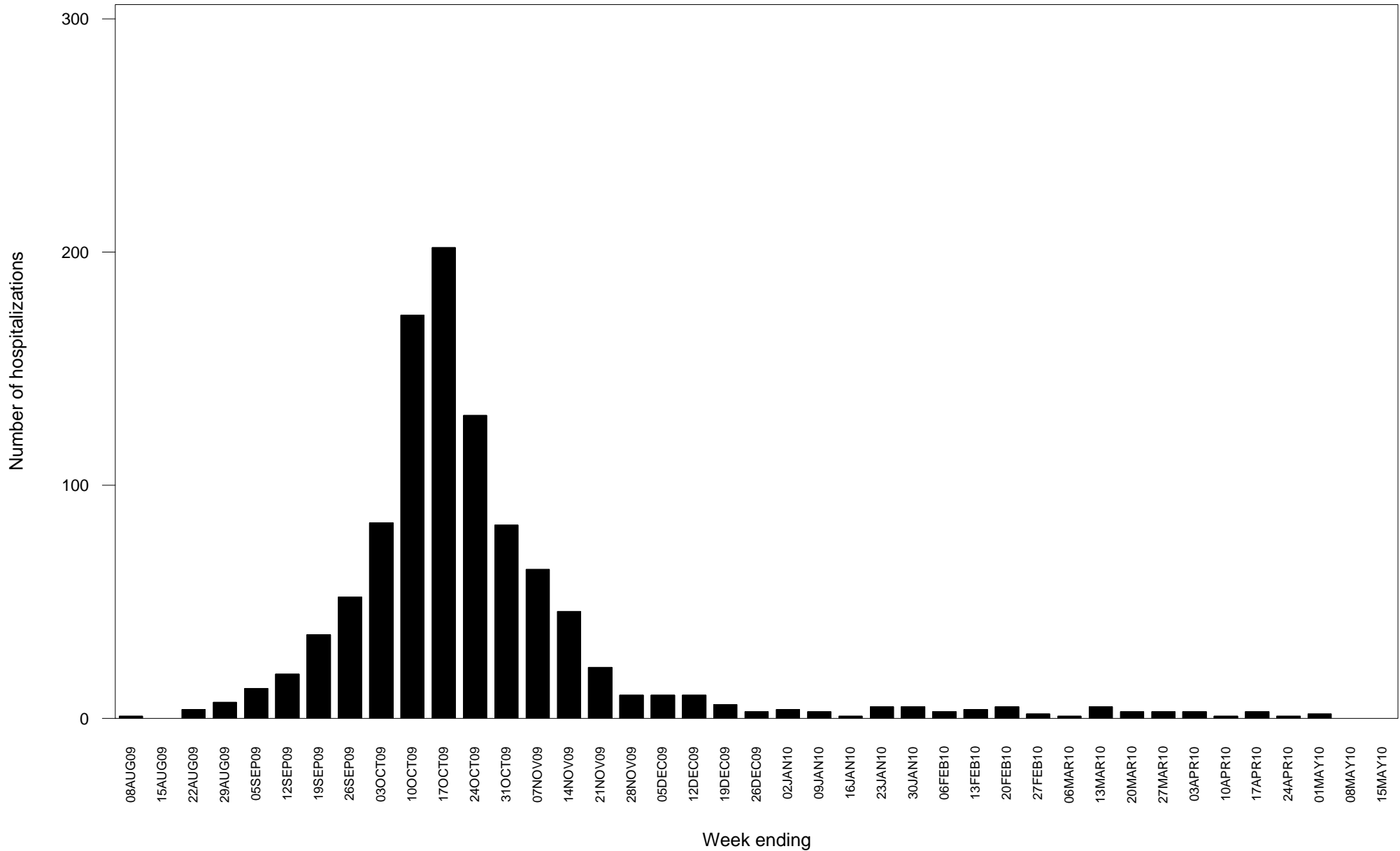
Dashed line indicates national baseline value of 2.3%. Reporting of US data is delayed a week.

# Figure 2: Percent of sentinel provider outpatient visits due to influenza-like illness (ILI) New Mexico



Dashed line indicates national baseline value of 2.3%. The Southeast region consistently reports ILI visit percentages that are higher than other regions so differences between regions should be interpreted with caution.

**Figure 3: Laboratory-confirmed influenza hospitalizations by admission date  
New Mexico**



Report date substituted for admission date for &nummissing hospitalizations for which admission date has not yet been determined.

**Table 1: Cumulative laboratory-confirmed influenza hospitalizations by county of residence  
New Mexico**

<b>County</b>	<b>Number</b>
<b>Bernalillo County</b>	252
<b>Catron County</b>	3
<b>Chaves County</b>	20
<b>Cibola County</b>	16
<b>Colfax County</b>	22
<b>Curry County</b>	57
<b>Dona Ana County</b>	127
<b>Eddy County</b>	30
<b>Grant County</b>	20
<b>Guadalupe County</b>	1
<b>Hidalgo County</b>	3
<b>Lea County</b>	42
<b>Lincoln County</b>	5
<b>Los Alamos County</b>	4
<b>Luna County</b>	13
<b>McKinley County</b>	84
<b>Mora County</b>	2
<b>Otero County</b>	34
<b>Quay County</b>	7
<b>Rio Arriba County</b>	23
<b>Roosevelt County</b>	9
<b>San Juan County</b>	72
<b>San Miguel County</b>	9
<b>Sandoval County</b>	43

(Continued)

**Table 1: Cumulative laboratory-confirmed influenza hospitalizations by county of residence  
New Mexico**

<b>County</b>	<b>Number</b>
<b>Santa Fe County</b>	64
<b>Sierra County</b>	13
<b>Socorro County</b>	21
<b>Taos County</b>	25
<b>Torrance County</b>	2
<b>Unknown</b>	1
<b>Valencia County</b>	32
<b>Total</b>	1056

**Table 2: Cumulative laboratory-confirmed influenza deaths by county of residence  
New Mexico**

<b>County</b>	<b>Number</b>
<b>Bernalillo County</b>	19
<b>Chaves County</b>	3
<b>Colfax County</b>	1
<b>Curry County</b>	1
<b>Dona Ana County</b>	4
<b>Eddy County</b>	1
<b>Lea County</b>	3
<b>Los Alamos County</b>	1
<b>Luna County</b>	1
<b>McKinley County</b>	2
<b>Otero County</b>	1
<b>Quay County</b>	1
<b>Rio Arriba County</b>	1
<b>Roosevelt County</b>	1
<b>San Juan County</b>	4
<b>San Miguel County</b>	1
<b>Sandoval County</b>	2
<b>Santa Fe County</b>	5
<b>Sierra County</b>	1
<b>Socorro County</b>	1
<b>Taos County</b>	1
<b>Unknown</b>	1
<b>Valencia County</b>	2
<b>Total</b>	58