



Influenza Surveillance Report

May 6, 2010

Outpatient Influenza-Like Illness (ILI) Surveillance

- For the week ending 5/1/10, visits to doctors for influenza-like illness (ILI) in New Mexico decreased slightly from 1.9% to 1.8% (Figure 1).
- The Southeast region had the same percentage of outpatient visits for ILI. The Northwest and Northeast region percentages increased slightly. The Central and Southwest region percentages decreased slightly (Figure 2). The percentages of outpatient visits for ILI in New Mexico regions were: 0.6% in Northeast, 2.9% in Northwest, 2.4% in Central, 0.6% in Southwest and 3.6% in Southeast.

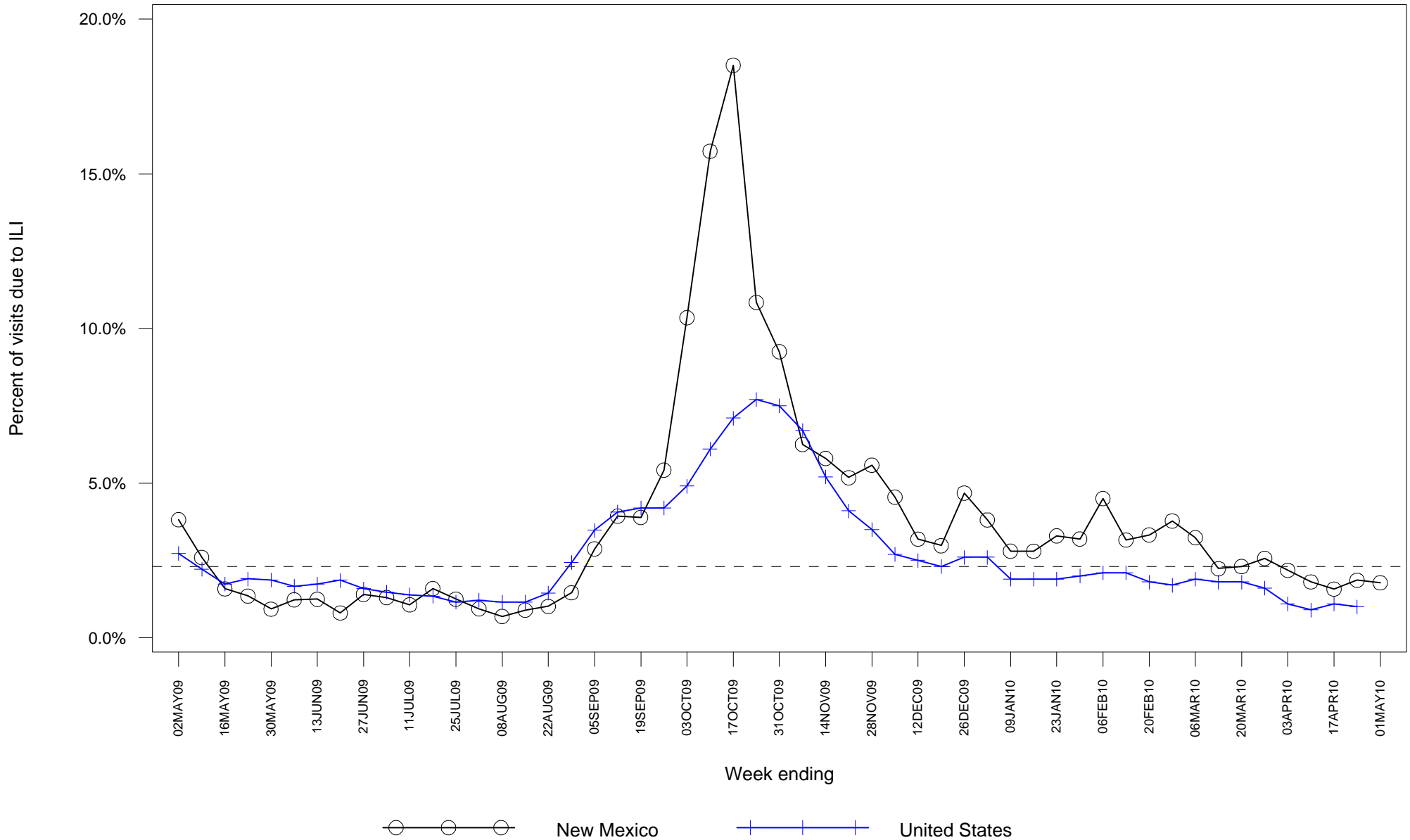
Laboratory-confirmed Influenza Hospitalization Surveillance

- Starting 10/12/09 the case definition for laboratory-confirmed influenza hospitalizations was expanded to include patients with positive rapid influenza and influenza fluorescent antibody tests. Previously the case definition only considered positive RT-PCR and viral culture results as confirmatory. This change was made to more accurately represent the burden of influenza-related hospitalizations in New Mexico.
- As of 5/1/10, there have been 1054 hospitalizations related to laboratory-confirmed influenza infection in New Mexico, an increase of 1 in the seasonal total from last week. Figure 3 shows number of hospitalizations by week of admission. Table 1 summarizes hospitalizations by county of residence.

Laboratory-confirmed Influenza Death Surveillance

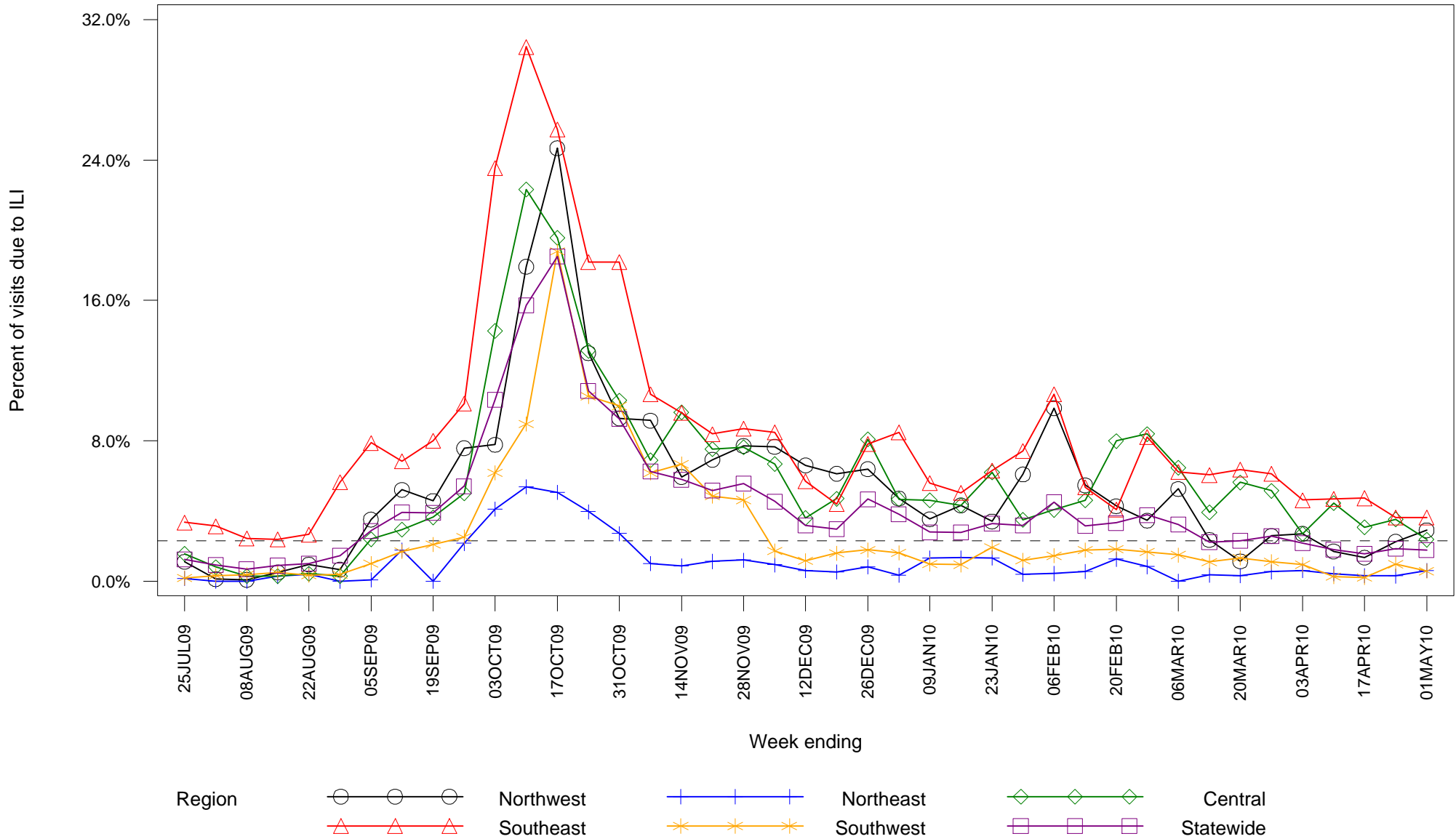
- As of 5/1/10, there have been 56 deaths related to laboratory-confirmed influenza infection in New Mexico. No new deaths have been reported since last week. Table 2 summarizes deaths by county of residence.

Figure 1: Percent of sentinel provider outpatient visits due to influenza-like illness (ILI) New Mexico and United States



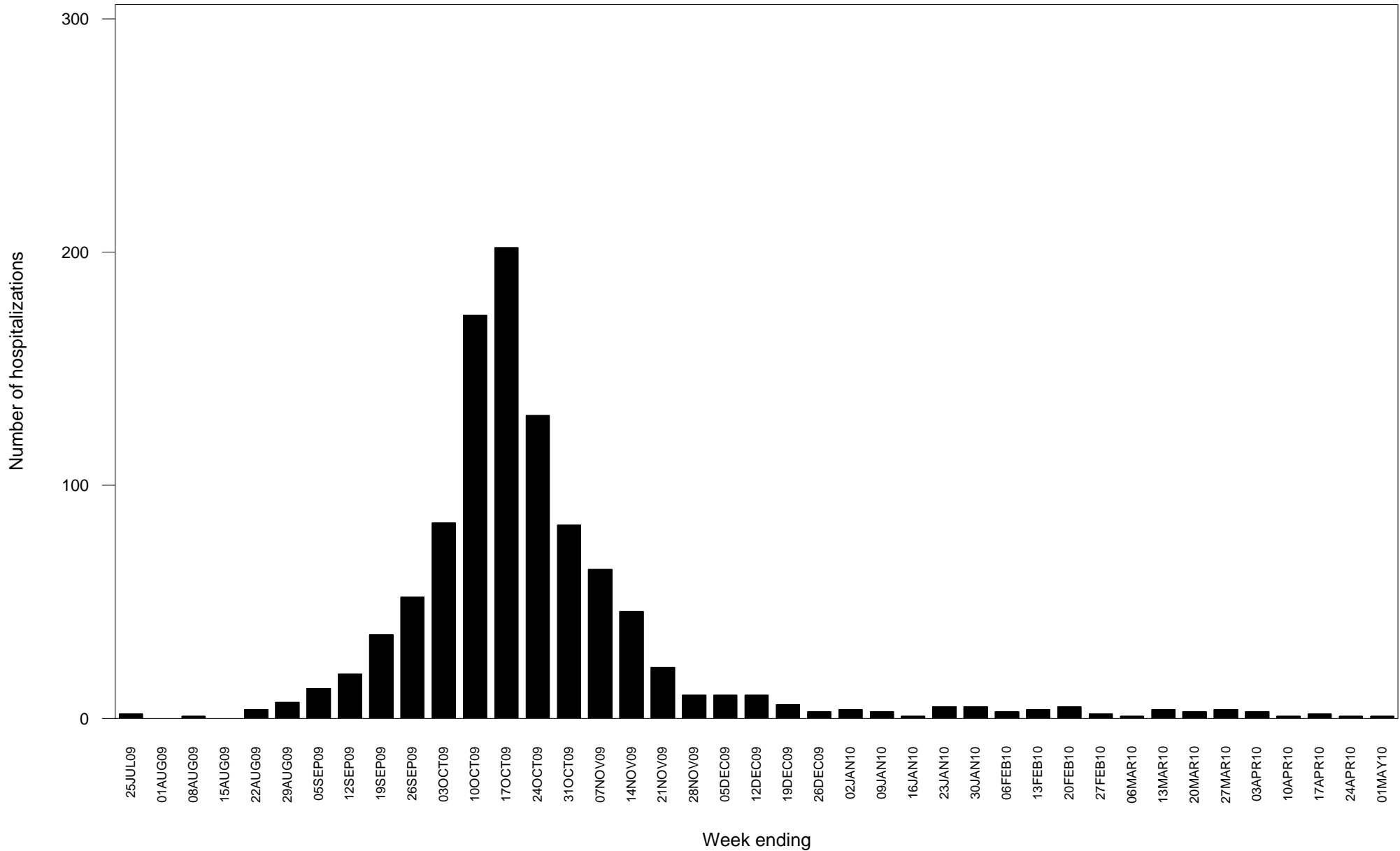
Dashed line indicates national baseline value of 2.3%. Reporting of US data is delayed a week.

Figure 2: Percent of sentinel provider outpatient visits due to influenza-like illness (ILI) New Mexico



Dashed line indicates national baseline value of 2.3%. The Southeast region consistently reports ILI visit percentages that are higher than other regions so differences between regions should be interpreted with caution.

**Figure 3: Laboratory-confirmed influenza hospitalizations by admission date
New Mexico**



Report date substituted for admission date for 1 hospitalizations for which admission date has not yet been determined.

**Table 1: Cumulative laboratory-confirmed influenza hospitalizations by county of residence
New Mexico**

County	Number
Bernalillo County	252
Catron County	3
Chaves County	20
Cibola County	16
Colfax County	22
Curry County	57
Dona Ana County	127
Eddy County	30
Grant County	20
Guadalupe County	1
Hidalgo County	3
Lea County	42
Lincoln County	5
Los Alamos County	4
Luna County	13
McKinley County	84
Mora County	2
Otero County	34
Quay County	7
Rio Arriba County	23
Roosevelt County	9
San Juan County	71
San Miguel County	9
Sandoval County	43

(Continued)

**Table 1: Cumulative laboratory-confirmed influenza hospitalizations by county of residence
New Mexico**

County	Number
Santa Fe County	64
Sierra County	13
Socorro County	21
Taos County	24
Torrance County	2
Unknown	1
Valencia County	32
Total	1054

**Table 2: Cumulative laboratory-confirmed influenza deaths by county of residence
New Mexico**

County	Number
Bernalillo County	19
Chaves County	3
Colfax County	1
Curry County	1
Dona Ana County	4
Eddy County	1
Lea County	3
Los Alamos County	1
Luna County	1
McKinley County	2
Otero County	1
Quay County	1
Rio Arriba County	1
Roosevelt County	1
San Juan County	4
San Miguel County	1
Sandoval County	2
Santa Fe County	5
Sierra County	1
Socorro County	1
Valencia County	2
Total	56