



## Influenza Surveillance Report

April 14, 2010

### **Outpatient Influenza-Like Illness (ILI) Surveillance**

- For the week ending 4/10/10, visits to doctors for influenza-like illness (ILI) in New Mexico decreased slightly from 2.2% to 1.8% (Figure 1).
- The Central and Southeast regions experienced a minimal increase in the percentage of outpatient visits for ILI while all other regions experienced decreases (Figure 2). The percentages of outpatient visits for ILI in New Mexico regions were: 0.4% in Northeast, 1.7% in Northwest, 4.5% in Central, 0.3% in Southwest and 4.7% in Southeast.

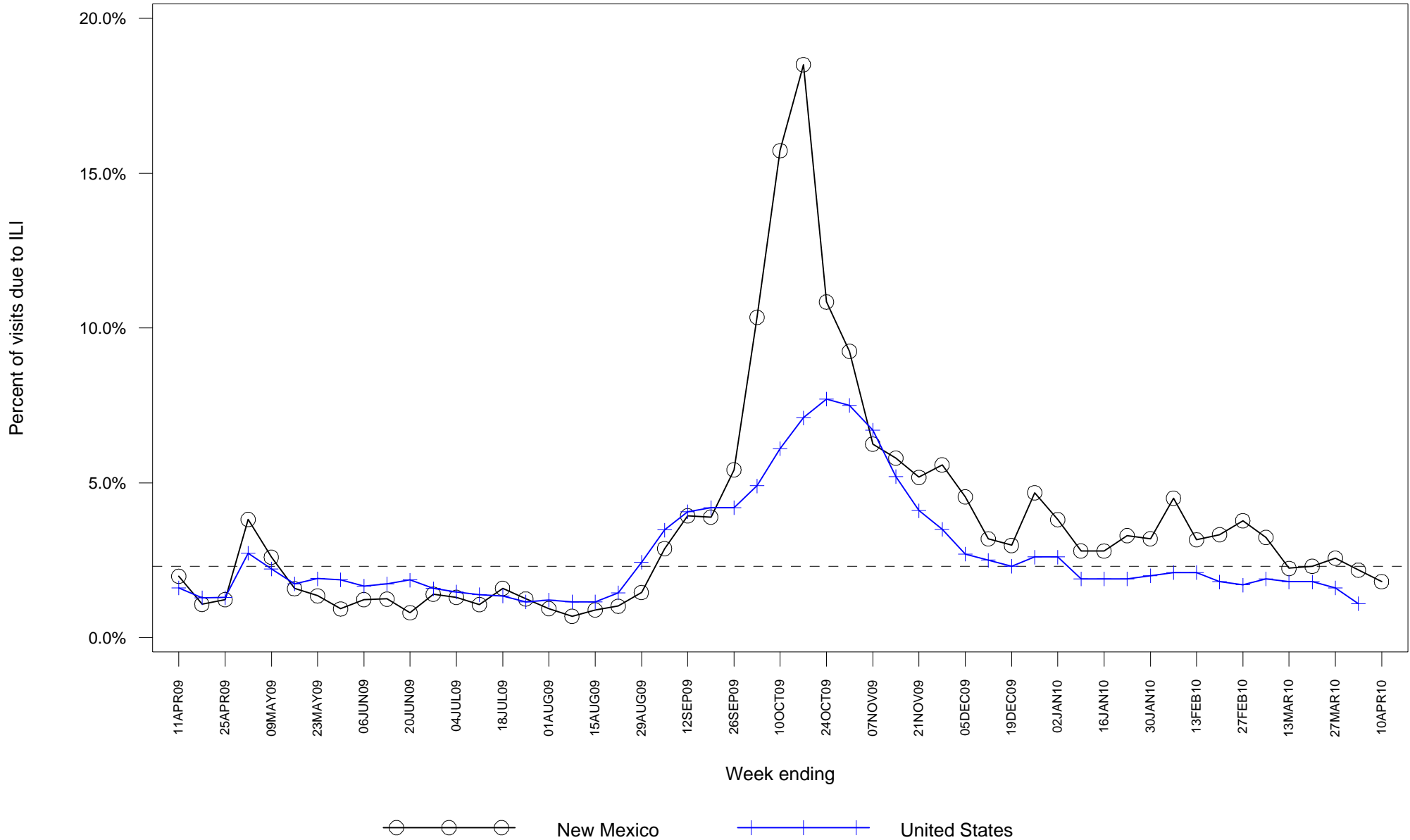
### **Laboratory-confirmed Influenza Hospitalization Surveillance**

- Starting 10/12/09 the case definition for laboratory-confirmed influenza hospitalizations was expanded to include patients with positive rapid influenza and influenza fluorescent antibody tests. Previously the case definition only considered positive RT-PCR and viral culture results as confirmatory. This change was made to more accurately represent the burden of influenza-related hospitalizations in New Mexico.
- As of 4/14/10, there have been 1049 hospitalizations related to laboratory-confirmed influenza infection in New Mexico, an increase of 2 in the seasonal total from last week. Figure 3 shows number of hospitalizations by week of admission. Table 1 summarizes hospitalizations by county of residence.

### **Laboratory-confirmed Influenza Death Surveillance**

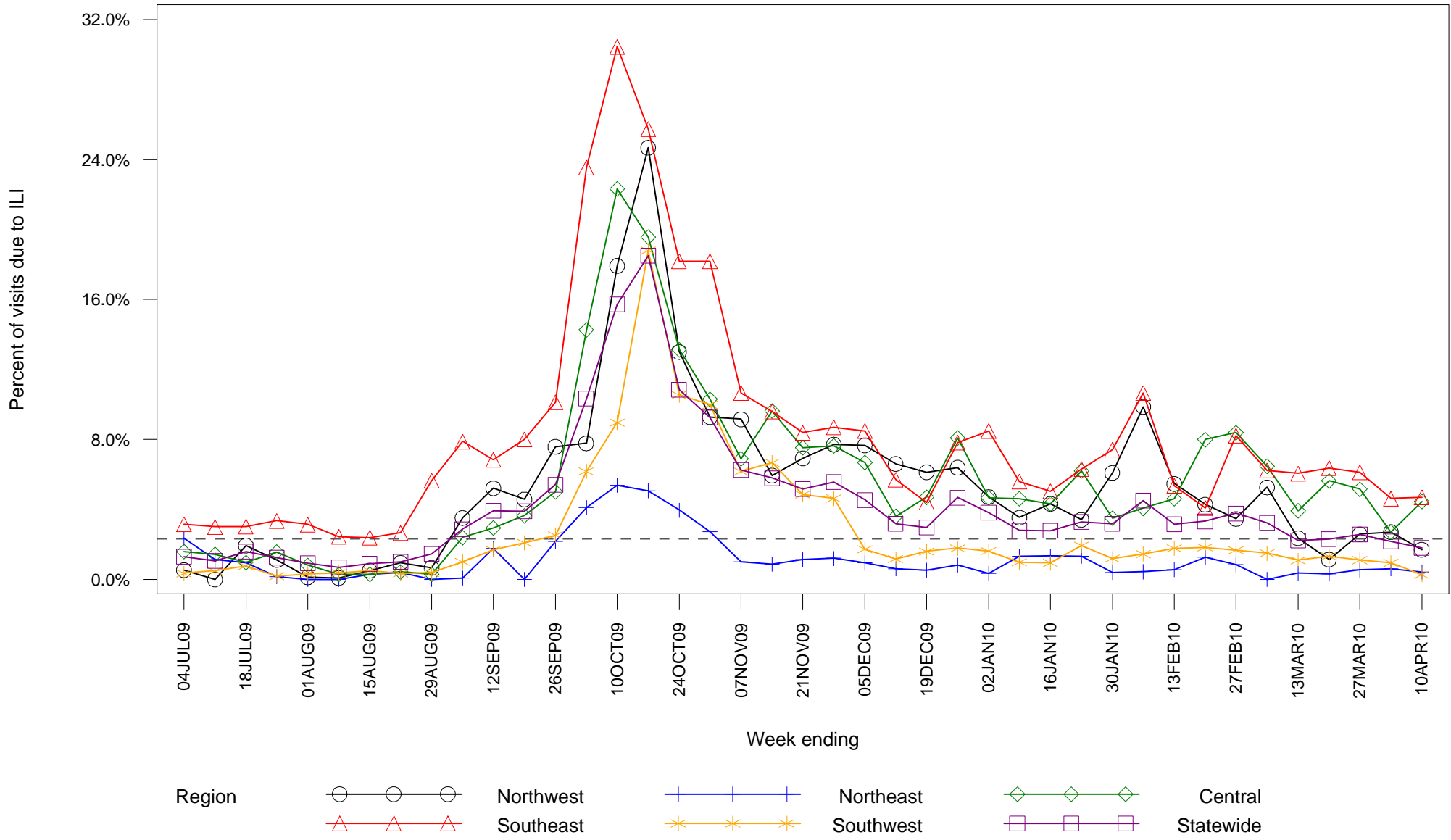
- As of 4/14/10, there have been 56 deaths related to laboratory-confirmed influenza infection in New Mexico. No new deaths have been reported since last week. Table 2 summarizes deaths by county of residence.

**Figure 1: Percent of sentinel provider outpatient visits due to influenza-like illness (ILI)  
New Mexico and United States**



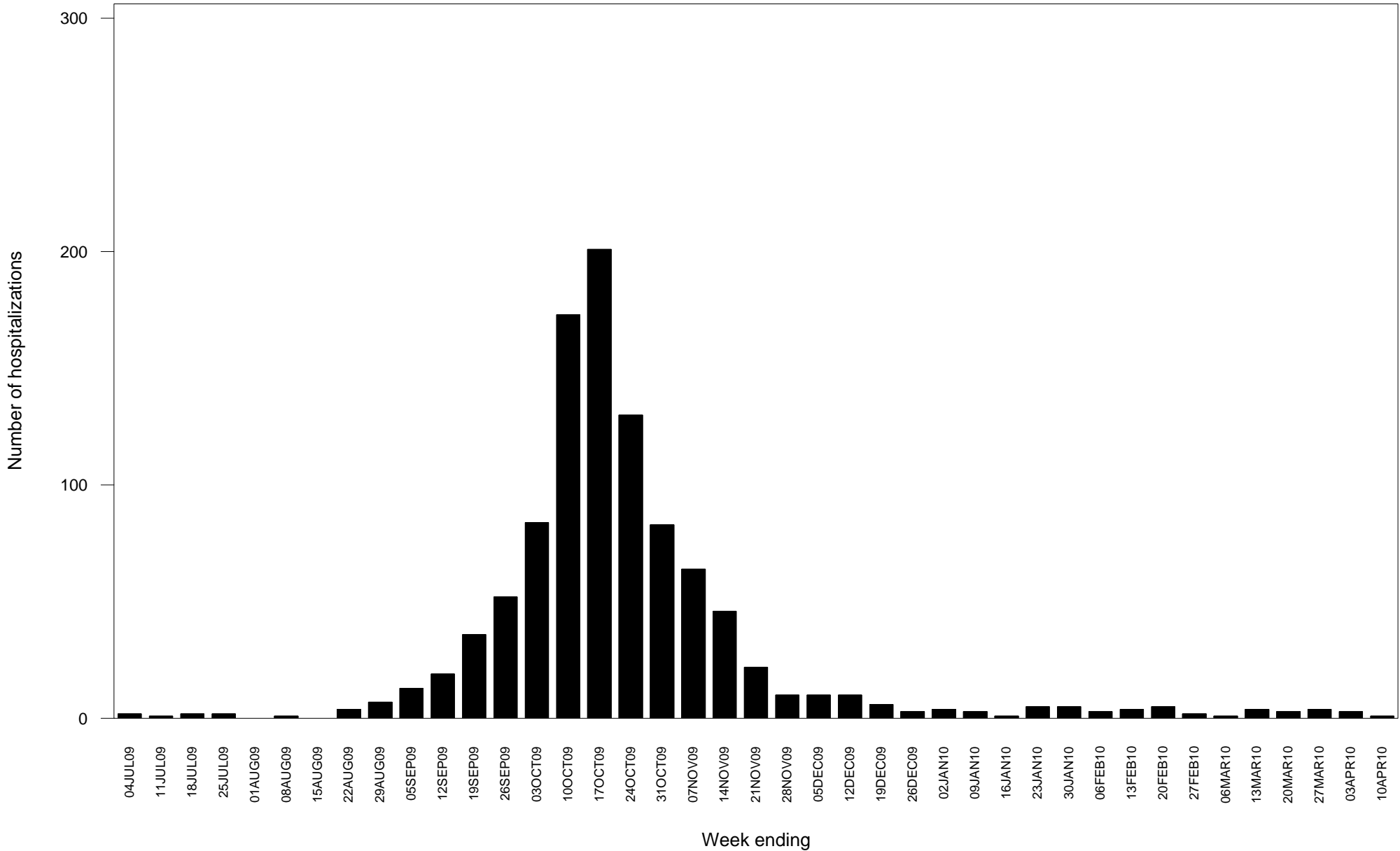
Dashed line indicates national baseline value of 2.3%. Reporting of US data is delayed a week.

# Figure 2: Percent of sentinel provider outpatient visits due to influenza-like illness (ILI) New Mexico



Dashed line indicates national baseline value of 2.3%. The Southeast region consistently reports ILI visit percentages that are higher than other regions so differences between regions should be interpreted with caution.

**Figure 3: Laboratory-confirmed influenza hospitalizations by admission date  
New Mexico**



Report date substituted for admission date for 1 hospitalizations for which admission date has not yet been determined.

**Table 1: Cumulative laboratory-confirmed influenza hospitalizations by county of residence  
New Mexico**

<b>County</b>	<b>Number</b>
<b>Bernalillo County</b>	252
<b>Catron County</b>	3
<b>Chaves County</b>	19
<b>Cibola County</b>	16
<b>Colfax County</b>	22
<b>Curry County</b>	57
<b>Dona Ana County</b>	127
<b>Eddy County</b>	30
<b>Grant County</b>	20
<b>Guadalupe County</b>	1
<b>Hidalgo County</b>	3
<b>Lea County</b>	42
<b>Lincoln County</b>	5
<b>Los Alamos County</b>	4
<b>Luna County</b>	13
<b>McKinley County</b>	83
<b>Mora County</b>	2
<b>Otero County</b>	34
<b>Quay County</b>	7
<b>Rio Arriba County</b>	24
<b>Roosevelt County</b>	9
<b>San Juan County</b>	71
<b>San Miguel County</b>	9
<b>Sandoval County</b>	42

(Continued)

**Table 1: Cumulative laboratory-confirmed influenza hospitalizations by county of residence  
New Mexico**

<b>County</b>	<b>Number</b>
<b>Santa Fe County</b>	61
<b>Sierra County</b>	13
<b>Socorro County</b>	21
<b>Taos County</b>	24
<b>Torrance County</b>	2
<b>Unknown</b>	1
<b>Valencia County</b>	32
<b>Total</b>	1049

**Table 2: Cumulative laboratory-confirmed influenza deaths by county of residence  
New Mexico**

<b>County</b>	<b>Number</b>
<b>Bernalillo County</b>	19
<b>Chaves County</b>	3
<b>Colfax County</b>	1
<b>Curry County</b>	1
<b>Dona Ana County</b>	4
<b>Eddy County</b>	1
<b>Lea County</b>	3
<b>Los Alamos County</b>	1
<b>Luna County</b>	1
<b>McKinley County</b>	2
<b>Otero County</b>	1
<b>Quay County</b>	1
<b>Rio Arriba County</b>	1
<b>Roosevelt County</b>	1
<b>San Juan County</b>	4
<b>San Miguel County</b>	1
<b>Sandoval County</b>	2
<b>Santa Fe County</b>	5
<b>Sierra County</b>	1
<b>Socorro County</b>	1
<b>Valencia County</b>	2
<b>Total</b>	56