



## Influenza Surveillance Report

December 30, 2009

### Outpatient Influenza-Like Illness (ILI) Surveillance

- **Note:** Due to holiday closures, 5 outpatient sites did not submit reports this week.
- For the week ending 12/26/09, visits to doctors for influenza-like illness (ILI) in New Mexico increased from 3.1% to 4.9% (Figure 1).
- All regions experienced increases in the percentage of outpatient visits for ILI (Figure 2). The percentages of outpatient visits for ILI in New Mexico regions were: 0.9% in Northeast, 6.4% in Northwest, 8.1% in Central, 1.9% in Southwest, and 7.8% in Southeast.

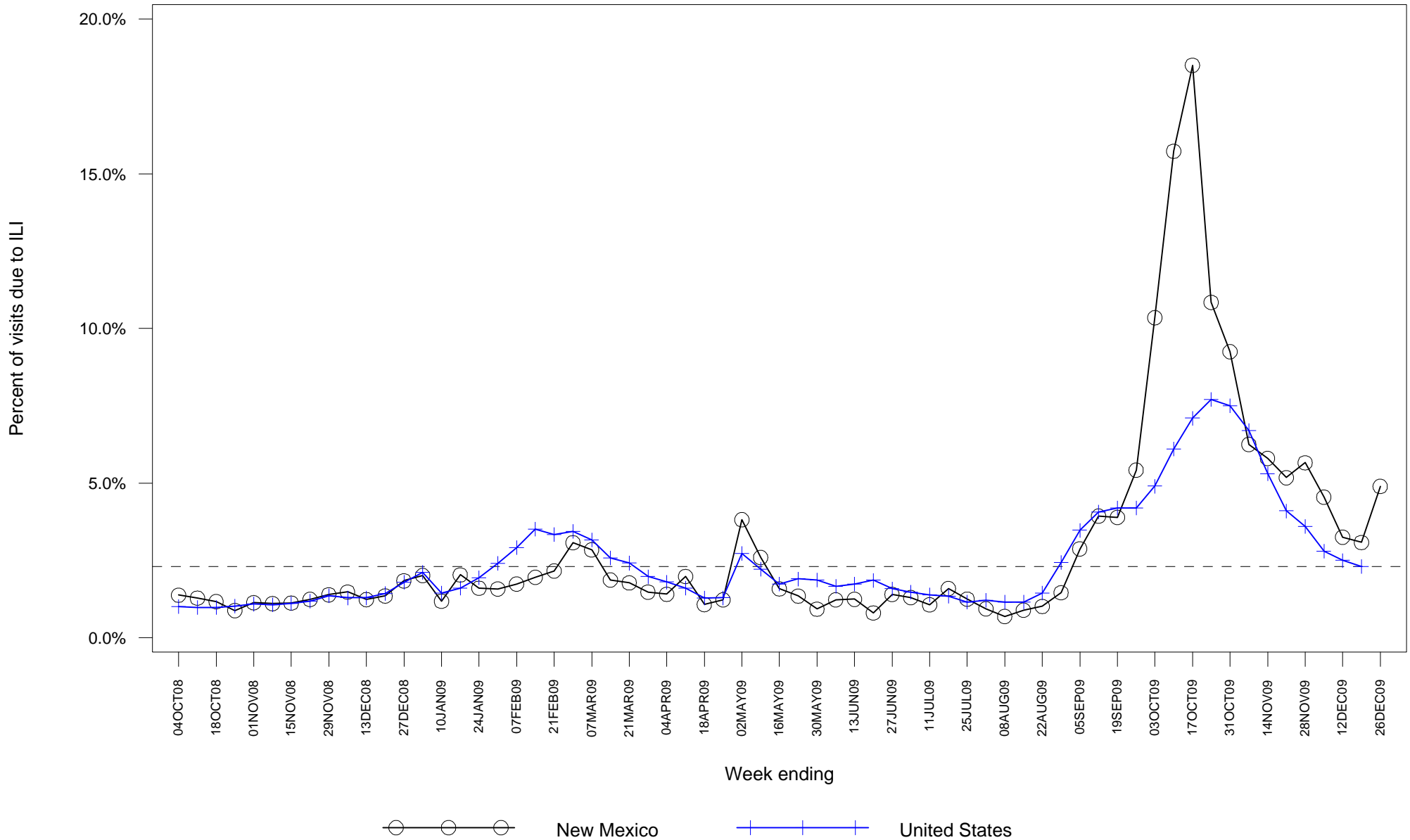
### Laboratory-confirmed Influenza Hospitalization Surveillance

- Starting 10/12/09 the case definition for laboratory-confirmed influenza hospitalizations was expanded to include patients with positive rapid influenza and influenza fluorescent antibody tests. Previously the case definition only considered positive RT-PCR and viral culture results as confirmatory. This change was made to more accurately represent the burden of influenza-related hospitalizations in New Mexico.
- As of 12/30/09, there have been 972 hospitalizations related to laboratory-confirmed influenza infection in New Mexico, an increase of 8 from last week. The number of hospitalizations occurring during the week ending 12/26/09 decreased compared to the previous week (Figure 3). Table 1 summarizes hospitalizations by county of residence.

### Laboratory-confirmed Influenza Death Surveillance

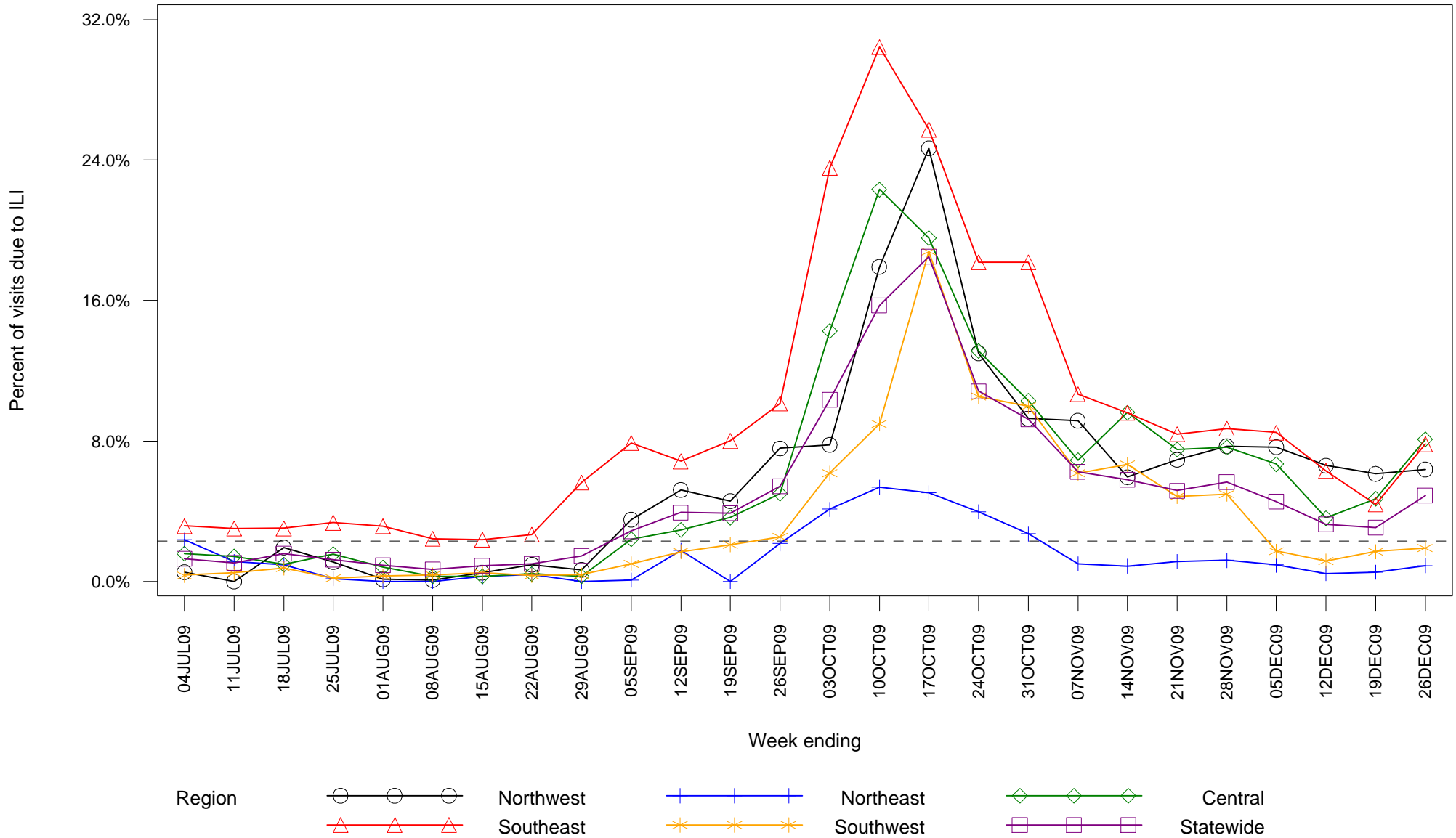
- As of 12/30/09, there have been 50 deaths related to laboratory-confirmed influenza infection in New Mexico. No new deaths were reported this week. Table 2 summarizes deaths by county of residence.

# Figure 1: Percent of sentinel provider outpatient visits due to influenza-like illness (ILI) New Mexico and United States



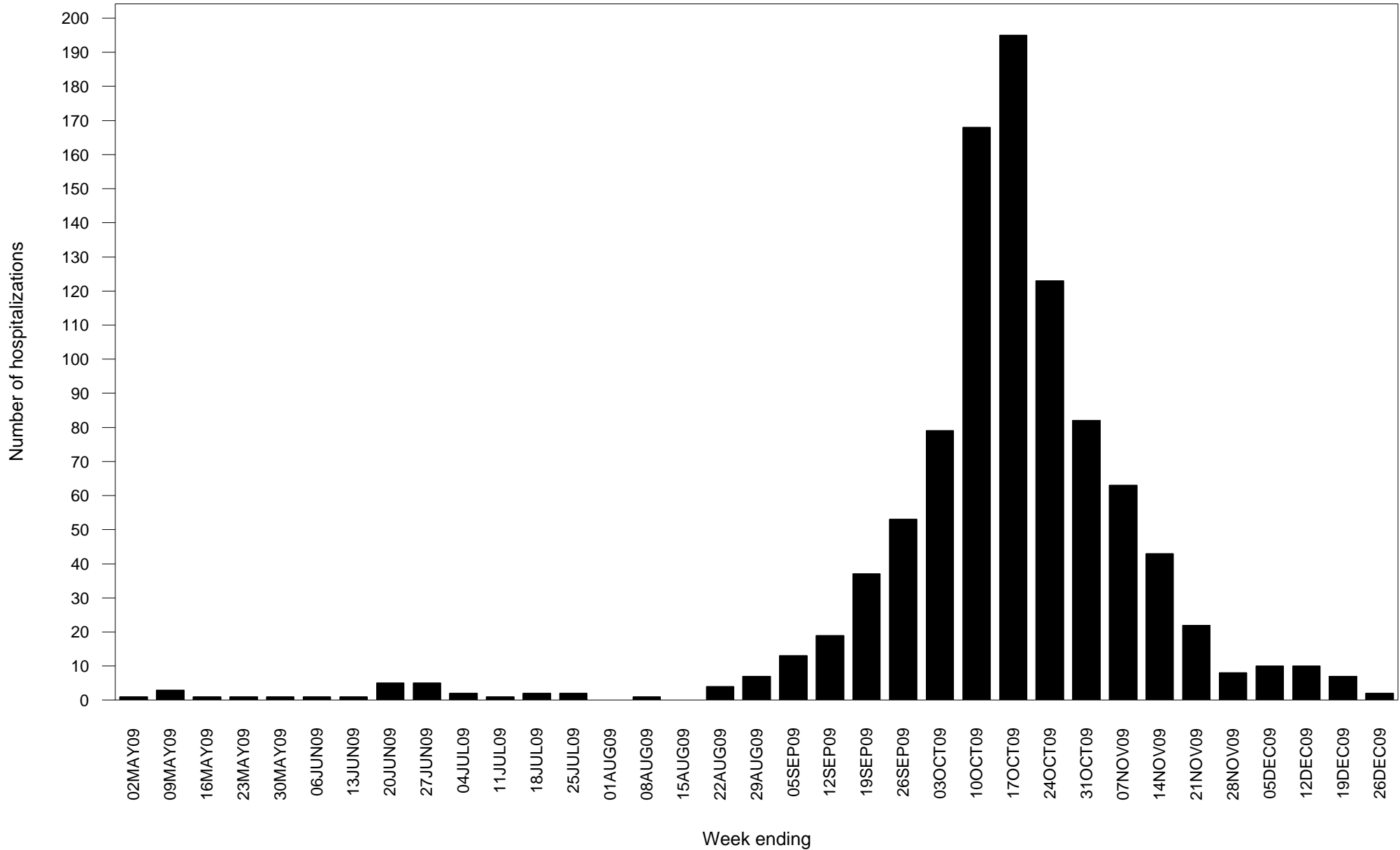
Dashed line indicates national baseline value of 2.3%. Reporting of US data is delayed a week.

# Figure 2: Percent of sentinel provider outpatient visits due to influenza-like illness (ILI) New Mexico



Dashed line indicates national baseline value of 2.3%. The Southeast region consistently reports ILI visit percentages that are higher than other regions so differences between regions should be interpreted with caution.

**Figure 3: Laboratory-confirmed influenza hospitalizations by admission date  
New Mexico**



Report date substituted for admission date for 17 hospitalizations for which admission date has not yet been determined.

**Table 1: Cumulative laboratory-confirmed influenza hospitalizations by county of residence  
New Mexico**

<b>County</b>	<b>Number</b>
<b>Bernalillo County</b>	249
<b>Catron County</b>	4
<b>Chaves County</b>	16
<b>Cibola County</b>	13
<b>Colfax County</b>	22
<b>Curry County</b>	56
<b>Dona Ana County</b>	123
<b>Eddy County</b>	28
<b>Grant County</b>	19
<b>Guadalupe County</b>	1
<b>Hidalgo County</b>	2
<b>Lea County</b>	31
<b>Lincoln County</b>	5
<b>Los Alamos County</b>	4
<b>Luna County</b>	13
<b>McKinley County</b>	74
<b>Mora County</b>	1
<b>Otero County</b>	28
<b>Quay County</b>	7
<b>Rio Arriba County</b>	21
<b>Roosevelt County</b>	9
<b>San Juan County</b>	61
<b>San Miguel County</b>	9
<b>Sandoval County</b>	40

(Continued)

**Table 1: Cumulative laboratory-confirmed influenza hospitalizations by county of residence  
New Mexico**

<b>County</b>	<b>Number</b>
<b>Santa Fe County</b>	49
<b>Sierra County</b>	10
<b>Socorro County</b>	16
<b>Taos County</b>	24
<b>Torrance County</b>	2
<b>Unknown</b>	4
<b>Valencia County</b>	31
<b>Total</b>	972

**Table 2: Cumulative laboratory-confirmed influenza deaths by county of residence  
New Mexico**

<b>County</b>	<b>Number</b>
<b>Bernalillo County</b>	19
<b>Chaves County</b>	3
<b>Colfax County</b>	1
<b>Curry County</b>	1
<b>Dona Ana County</b>	4
<b>Eddy County</b>	1
<b>Lea County</b>	1
<b>Los Alamos County</b>	1
<b>Luna County</b>	1
<b>McKinley County</b>	2
<b>Quay County</b>	1
<b>Rio Arriba County</b>	1
<b>Roosevelt County</b>	1
<b>San Juan County</b>	3
<b>Sandoval County</b>	2
<b>Santa Fe County</b>	4
<b>Sierra County</b>	1
<b>Socorro County</b>	1
<b>Valencia County</b>	2
<b>Total</b>	50