



Influenza Surveillance Report

December 23, 2009

Outpatient Influenza-Like Illness (ILI) Surveillance

- For the week ending 12/19/09, visits to doctors for influenza-like illness (ILI) in New Mexico decreased slightly from 3.3% to 3.1% (Figure 1). The ILI visit percentage remains higher than what is expected during this time of year for both New Mexico and the United States.
- All regions experienced changes, either slight increases or decreases, in the percentage of outpatient visits for ILI (Figure 2). The percentages of outpatient visits for ILI in New Mexico regions were: 0.5% in Northeast, 6.1% in Northwest, 4.7% in Central, 1.7% in Southwest, and 4.4% in Southeast.

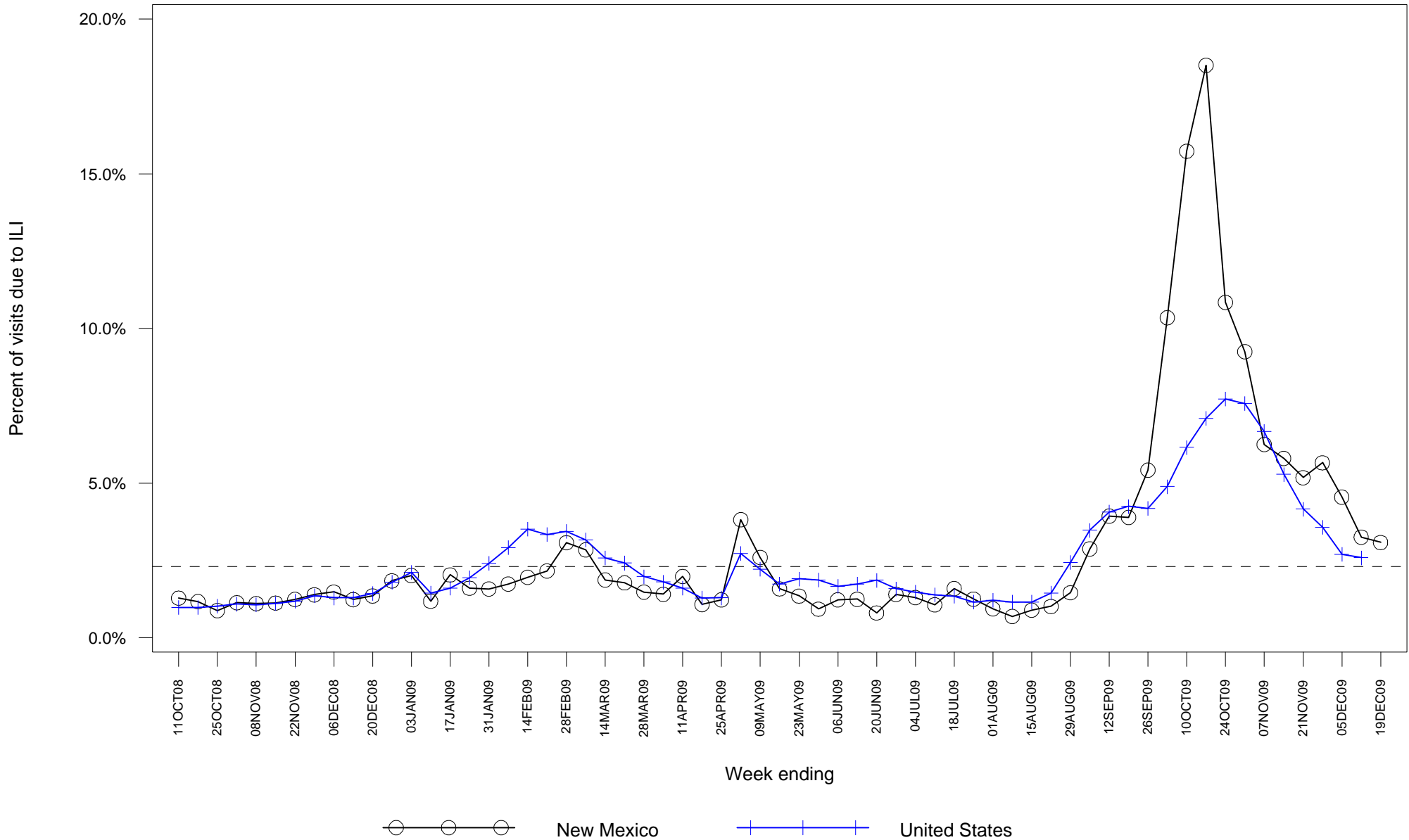
Laboratory-confirmed Influenza Hospitalization Surveillance

- Starting 10/12/09 the case definition for laboratory-confirmed influenza hospitalizations was expanded to include patients with positive rapid influenza and influenza fluorescent antibody tests. Previously the case definition only considered positive RT-PCR and viral culture results as confirmatory. This change was made to more accurately represent the burden of influenza-related hospitalizations in New Mexico.
- As of 12/23/09, there have been 964 hospitalizations related to laboratory-confirmed influenza infection in New Mexico, an increase of 7 from last week. The number of hospitalizations occurring during the week ending 12/19/09 was similar in comparison to the previous week (Figure 3). Table 1 summarizes hospitalizations by county of residence.

Laboratory-confirmed Influenza Death Surveillance

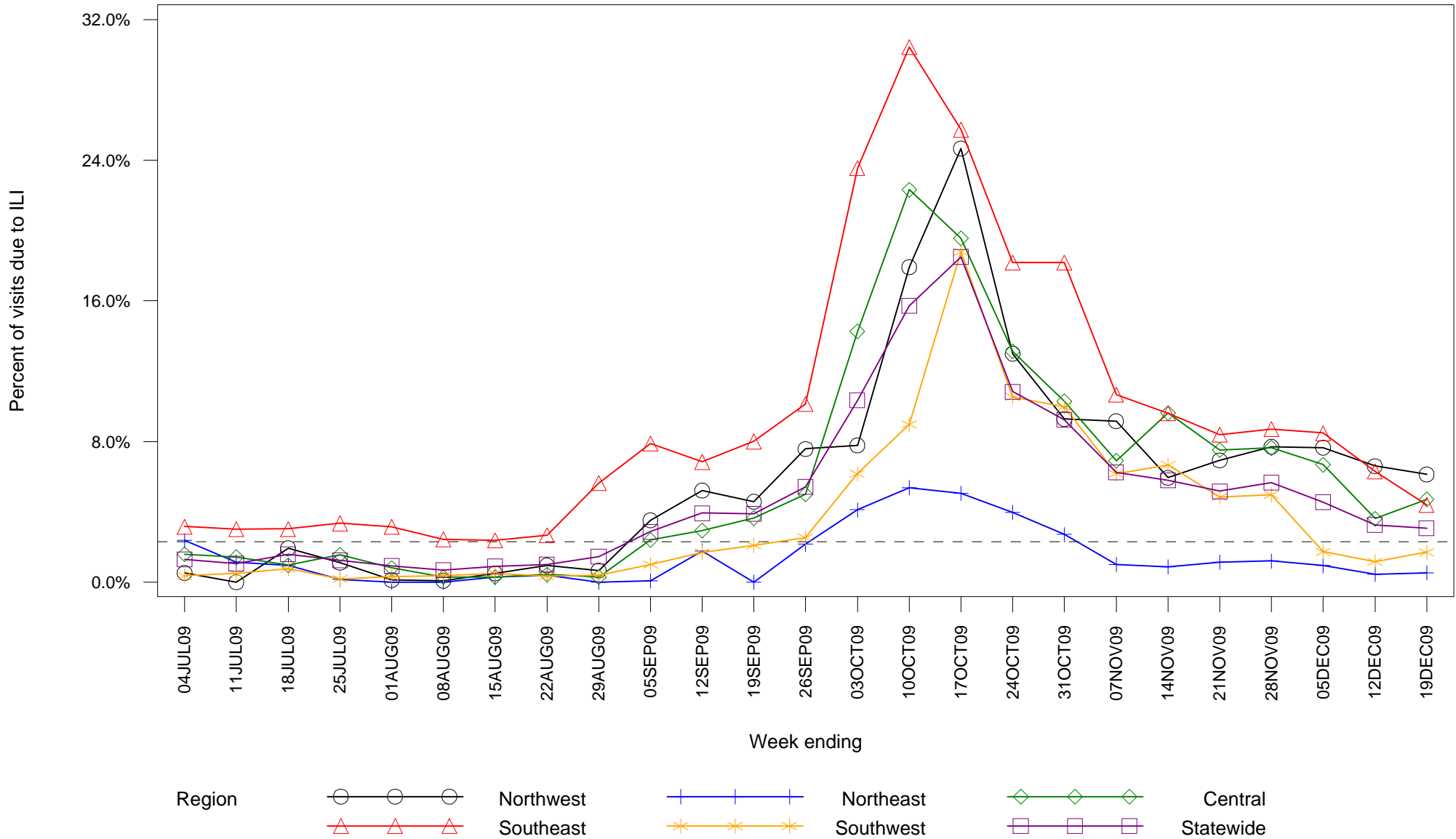
- As of 12/23/09, there have been 50 deaths related to laboratory-confirmed influenza infection in New Mexico. Three new deaths were reported this week: a 28 year-old male from Bernalillo County with chronic medical conditions, a 56 year-old male from Bernalillo County with chronic medical conditions and a 34 year-old female from San Juan County with chronic medical conditions. Table 2 summarizes deaths by county of residence.

Figure 1: Percent of sentinel provider outpatient visits due to influenza-like illness (ILI) New Mexico and United States



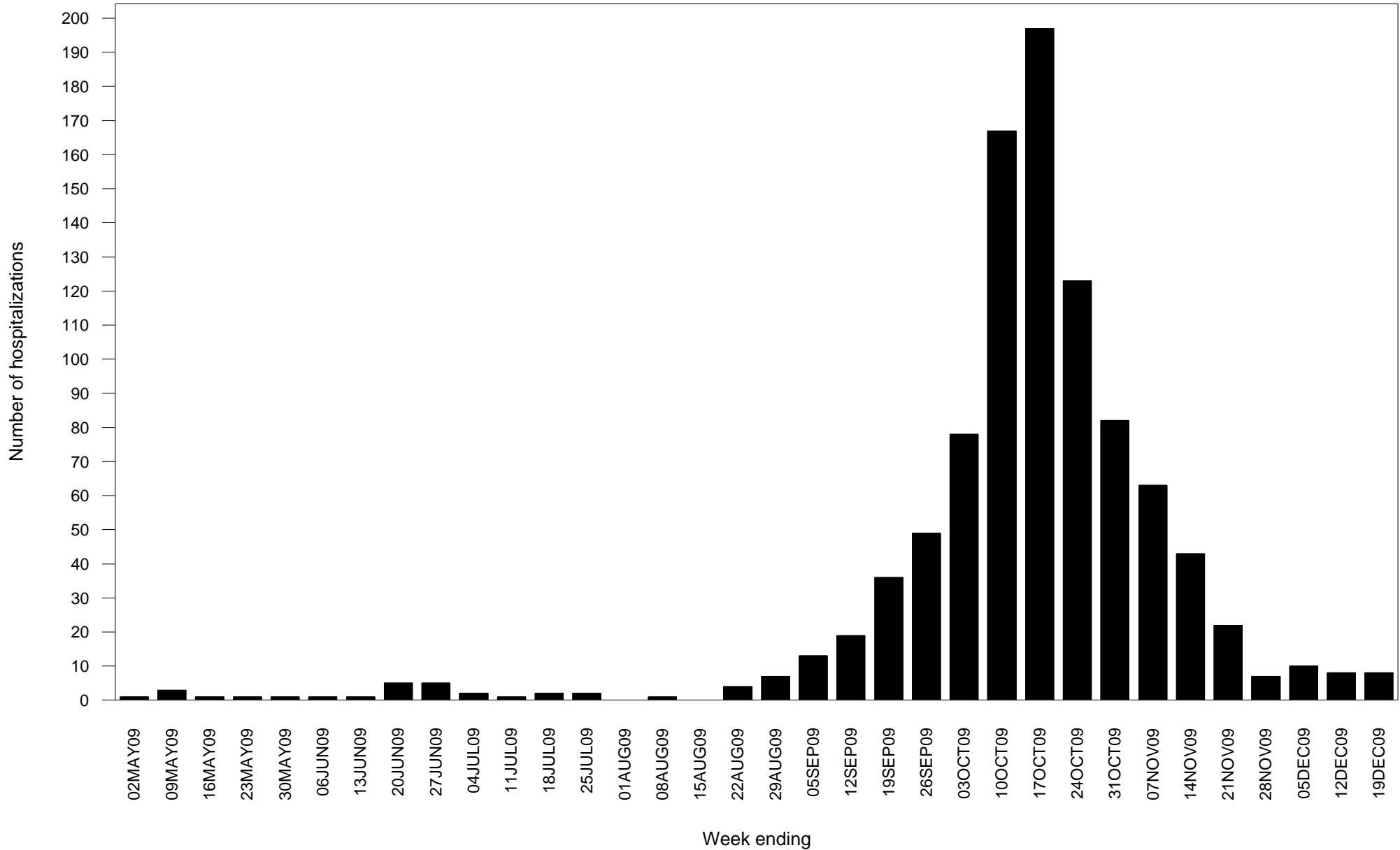
Dashed line indicates national baseline value of 2.3%. Reporting of US data is delayed a week.

Figure 2: Percent of sentinel provider outpatient visits due to influenza-like illness (ILI) New Mexico



Dashed line indicates national baseline value of 2.3%. The Southeast region consistently reports ILI visit percentages that are higher than other regions so differences between regions should be interpreted with caution.

**Figure 3: Laboratory-confirmed influenza hospitalizations by admission date
New Mexico**



Report date substituted for admission date for 19 hospitalizations for which admission date has not yet been determined.

**Table 1: Cumulative laboratory-confirmed influenza hospitalizations by county of residence
New Mexico**

County	Number
Bernalillo County	248
Catron County	4
Chaves County	16
Cibola County	13
Colfax County	22
Curry County	57
Dona Ana County	118
Eddy County	28
Grant County	19
Guadalupe County	1
Hidalgo County	2
Lea County	30
Lincoln County	5
Los Alamos County	4
Luna County	13
McKinley County	74
Mora County	1
Otero County	28
Quay County	7
Rio Arriba County	21
Roosevelt County	9
San Juan County	61
San Miguel County	9
Sandoval County	41

(Continued)

**Table 1: Cumulative laboratory-confirmed influenza hospitalizations by county of residence
New Mexico**

County	Number
Santa Fe County	48
Sierra County	10
Socorro County	16
Taos County	22
Torrance County	2
Unknown	4
Valencia County	31
Total	964

**Table 2: Cumulative laboratory-confirmed influenza deaths by county of residence
New Mexico**

County	Number
Bernalillo County	19
Chaves County	3
Colfax County	1
Curry County	1
Dona Ana County	4
Eddy County	1
Lea County	1
Los Alamos County	1
Luna County	1
McKinley County	2
Quay County	1
Rio Arriba County	1
Roosevelt County	1
San Juan County	3
Sandoval County	2
Santa Fe County	4
Sierra County	1
Socorro County	1
Valencia County	2
Total	50