



Influenza Surveillance Report

December 16, 2009

Outpatient Influenza-Like Illness (ILI) Surveillance

- For the week ending 12/12/09, visits to doctors for influenza-like illness (ILI) in New Mexico decreased from 4.5% to 3.3% (Figure 1). The ILI visit percentage remains higher than what is expected during this time of year for both New Mexico and the United States.
- All regions experienced decreases in the percentage of outpatient visits for ILI (Figure 2). The percentages of outpatient visits for ILI in New Mexico regions were: 0.4% in Northeast, 6.6% in Northwest, 3.6% in Central, 1.2% in Southwest, and 6.3% in Southeast.

Laboratory-confirmed Influenza Hospitalization Surveillance

- Starting 10/12/09 the case definition for laboratory-confirmed influenza hospitalizations was expanded to include patients with positive rapid influenza and influenza fluorescent antibody tests. Previously the case definition only considered positive RT-PCR and viral culture results as confirmatory. This change was made to more accurately represent the burden of influenza-related hospitalizations in New Mexico.
- As of 12/16/09, there have been 957 hospitalizations related to laboratory-confirmed influenza infection in New Mexico, an increase of 2 from last week. The number of hospitalizations occurring during the week ending 12/12/09 decreased compared to the previous week (Figure 3). Table 1 summarizes hospitalizations by county of residence.

Laboratory-confirmed Influenza Death Surveillance

- As of 12/16/09, there have been 47 deaths related to laboratory-confirmed influenza infection in New Mexico. Four new deaths were reported this week: a 62 year-old male from Bernalillo County with chronic medical conditions, an 89 year-old male from Bernalillo County with chronic medical conditions, an 85 year-old male from Dona Ana County with chronic medical conditions and a 39 year-old male from Santa Fe County with chronic medical conditions. Table 2 summarizes deaths by county of residence.



Weekly Surveillance Highlight

- The overall rate of laboratory-confirmed influenza hospitalizations for New Mexico is 46 per 100,000 population. The county-specific rates range from 11.2 per 100,000 population for Torrance County to 150.1 per 100,000 population for Colfax County.

**Laboratory-confirmed influenza hospitalizations by county of residence
Reported since April 1, 2009**

County	Number of hospitalizations	Rate per 100,000 population ¹
Bernalillo County	243	37.3
Catron County	2	50.8
Chaves County	16	25.0
Cibola County	12	41.5
Colfax County	22	150.1
Curry County	57	118.7
Dona Ana County	119	56.9
Eddy County	28	52.9
Grant County	20	62.3
Guadalupe County	1	20.7
Hidalgo County	2	33.5
Lea County	30	50.2
Lincoln County	6	25.8
Los Alamos County	4	20.0
Luna County	13	45.9
McKinley County	71	88.3
Mora County	1	18.0
Otero County	28	41.5
Quay County	7	68.0
Rio Arriba County	20	45.3
Roosevelt County	9	46.8
San Juan County	61	46.9
San Miguel County	9	28.8
Sandoval County	41	32.0
Santa Fe County	47	31.8
Sierra County	10	71.8
Socorro County	16	84.8
Taos County	22	67.7
Torrance County	2	11.2
Union County	1	22.5
Valencia County	30	38.7
New Mexico ²	957	46.0

1. 2008 population estimates from the University of New Mexico Bureau of Business and Economic Research.
 2. Includes 7 patients whose county of residence has not yet been determined.



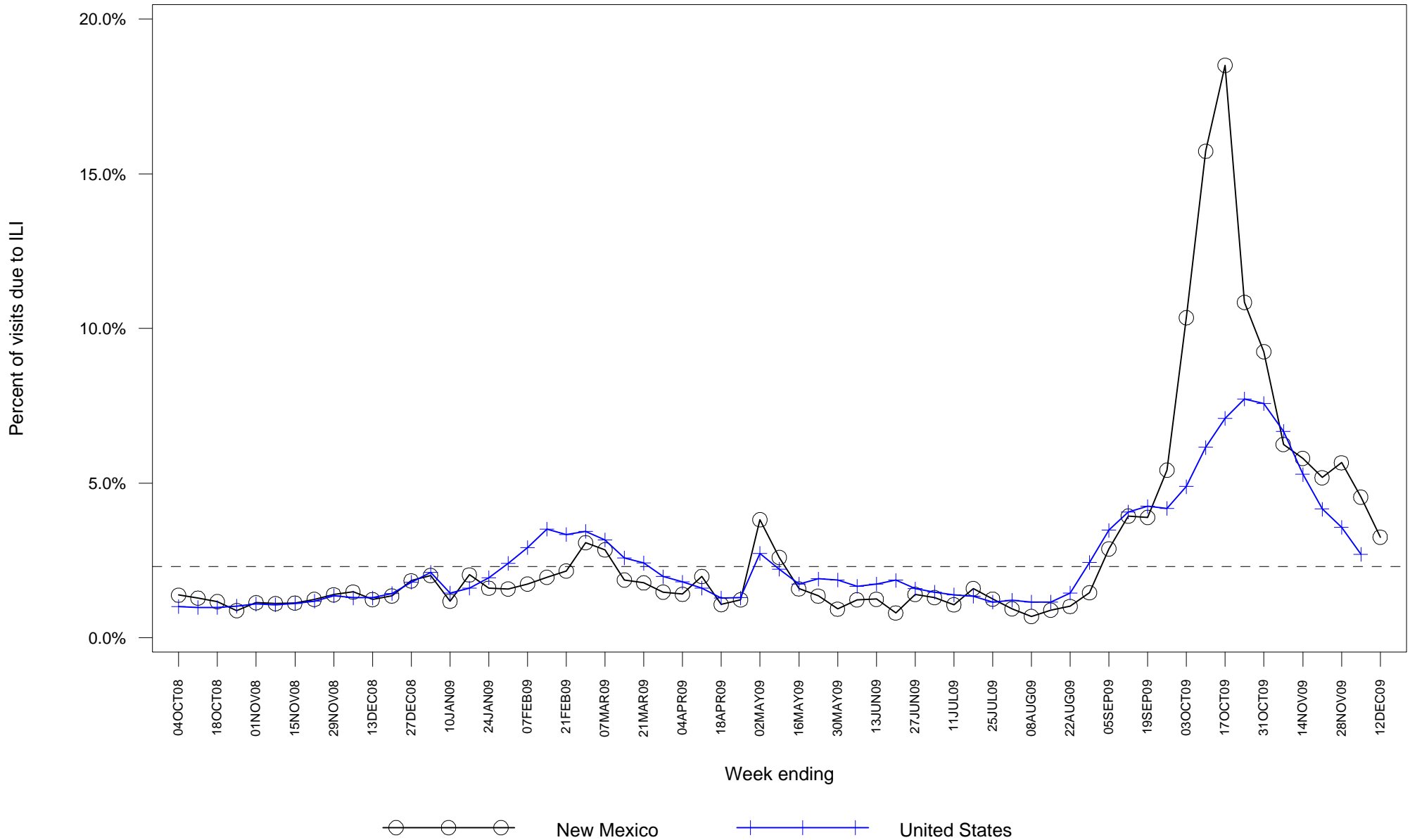
- The overall rate of laboratory-confirmed influenza deaths for New Mexico is 2.3 per 100,000 population. The region-specific rates range from 1.7 per 100,000 population for the Southwest to 3.1 per 100,000 population for the Southeast.

**Laboratory-confirmed influenza deaths by region of residence
Reported since April 1, 2009**

Region	Number of deaths	Rate per 100,000 population¹
Northwest	9	2.0
Northeast	6	2.0
Central	17	2.6
Southeast	8	3.1
Southwest	7	1.7
New Mexico	47	2.3

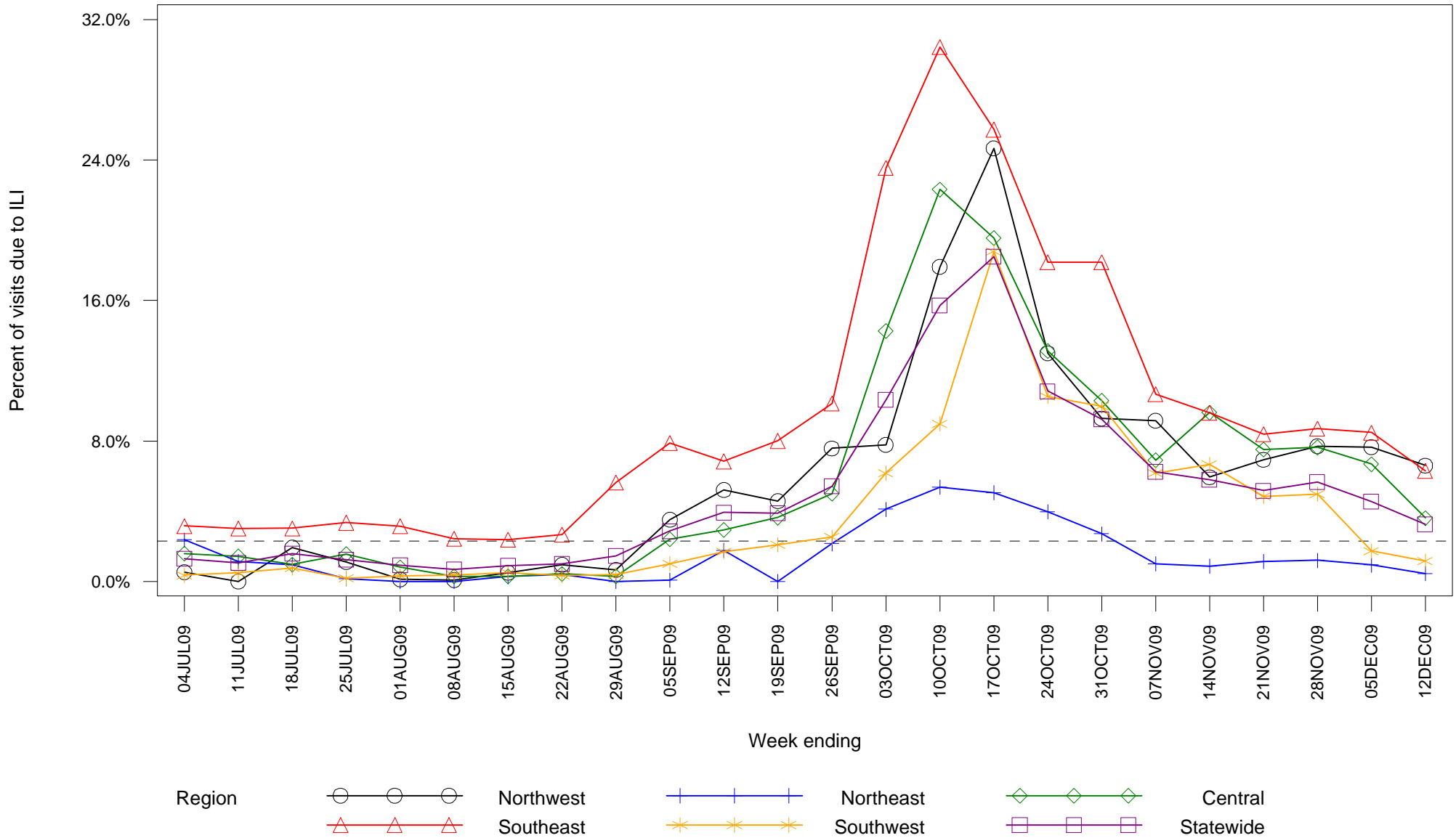
1. 2008 population estimates from the University of New Mexico Bureau of Business and Economic Research.

**Figure 1: Percent of sentinel provider outpatient visits due to influenza-like illness (ILI)
New Mexico and United States**



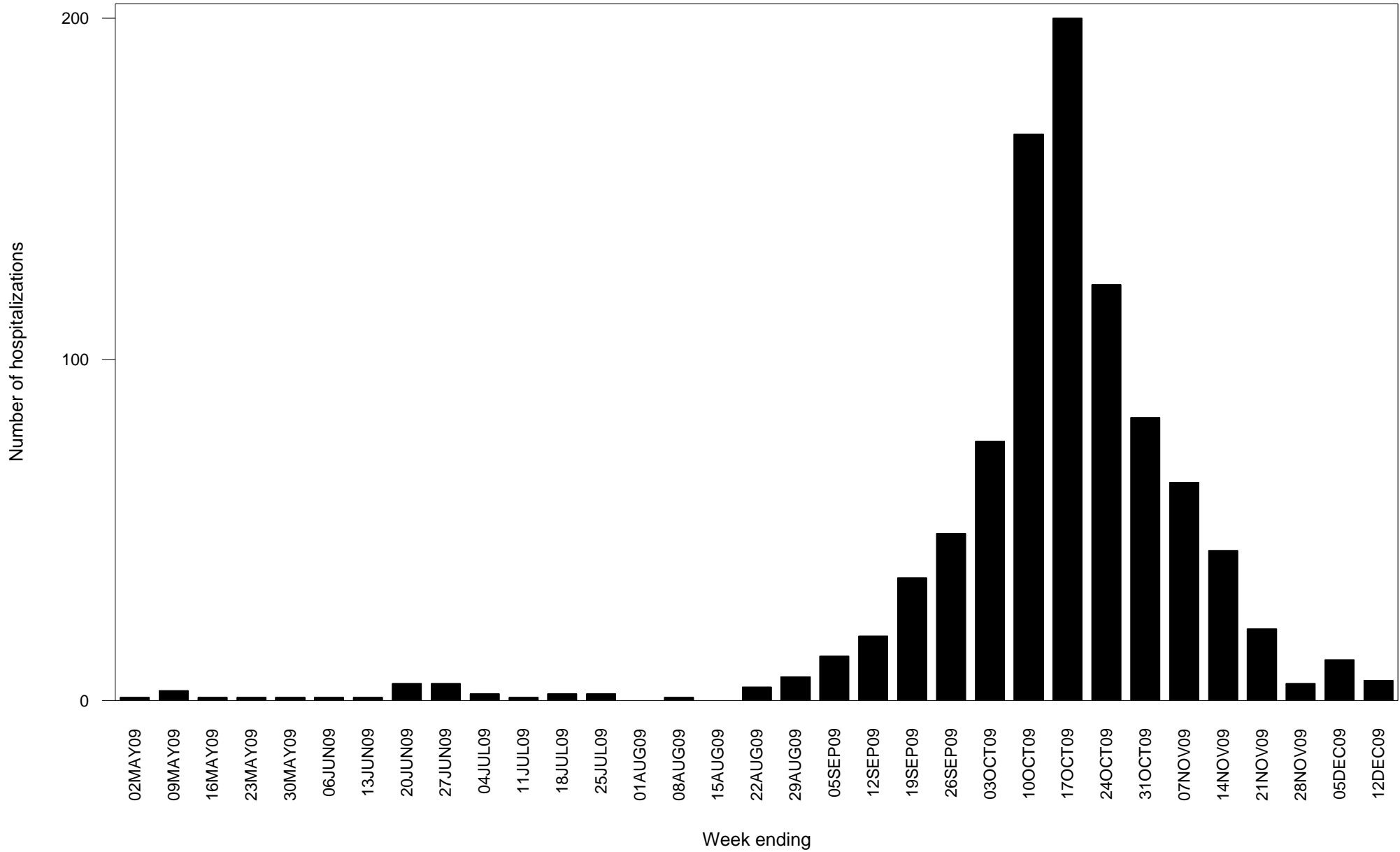
Dashed line indicates national baseline value of 2.3%. Reporting of US data is delayed a week.

Figure 2: Percent of sentinel provider outpatient visits due to influenza-like illness (ILI) New Mexico



Dashed line indicates national baseline value of 2.3%. The Southeast region consistently reports ILI visit percentages that are higher than other regions so differences between regions should be interpreted with caution.

**Figure 3: Laboratory-confirmed influenza hospitalizations by admission date
New Mexico**



Report date substituted for admission date for 26 hospitalizations for which admission date has not yet been determined.

**Table 1: Cumulative laboratory-confirmed influenza hospitalizations by county of residence
New Mexico**

County	Number
Bernalillo County	243
Catron County	2
Chaves County	16
Cibola County	12
Colfax County	22
Curry County	57
Dona Ana County	119
Eddy County	28
Grant County	20
Guadalupe County	1
Hidalgo County	2
Lea County	30
Lincoln County	6
Los Alamos County	4
Luna County	13
McKinley County	71
Mora County	1
Otero County	28
Quay County	7
Rio Arriba County	20
Roosevelt County	9
San Juan County	61
San Miguel County	9
Sandoval County	41

(Continued)

**Table 1: Cumulative laboratory-confirmed influenza hospitalizations by county of residence
New Mexico**

County	Number
Santa Fe County	47
Sierra County	10
Socorro County	16
Taos County	22
Torrance County	2
Union County	1
Unknown	7
Valencia County	30
Total	957

**Table 2: Cumulative laboratory-confirmed influenza deaths by county of residence
New Mexico**

County	Number
Bernalillo County	17
Chaves County	3
Colfax County	1
Curry County	1
Dona Ana County	4
Eddy County	1
Lea County	1
Los Alamos County	1
Luna County	1
McKinley County	2
Quay County	1
Roosevelt County	1
San Juan County	3
Sandoval County	2
Santa Fe County	4
Sierra County	1
Socorro County	1
Valencia County	2
Total	47