



Influenza Surveillance Report

November 18, 2009

Outpatient Influenza-Like Illness (ILI) Surveillance

- For the week ending 11/14/09, visits to doctors for influenza-like illness (ILI) in New Mexico fell from 6.2% to 5.8% (Figure 1). The ILI visit percentage remains higher than what is expected during this time of year for both New Mexico and the United States.
- The Central and Southwest regions experienced increases in the percentage of outpatient visits for ILI while all other regions experienced decreases (Figure 2). The percentages of outpatient visits for ILI in New Mexico regions were 0.9% in Northeast, 5.9% in Northwest, 9.6% in Central, 6.7% in Southwest, and 9.6% in Southeast.
- Patients between the ages of 5 years and 24 years still represent the largest percentage of all ILI visits, but this percentage has been falling for the last several weeks (from 51% for week ending 10/10/09 to 37% for week ending 11/14/09). This decline has been offset by increases in the 0 to 4 year-old (19% for week ending 10/10/09 to 26% for week ending 11/14/09) and 25 to 49 year-old (22% for week ending 10/10/09 to 29% for week ending 11/14/09) age groups. The percentages for the 50 to 64 year-old and over 65 year-old age groups have remained steady for the last several weeks (6% and 3%, respectively, for week ending 11/14/09).

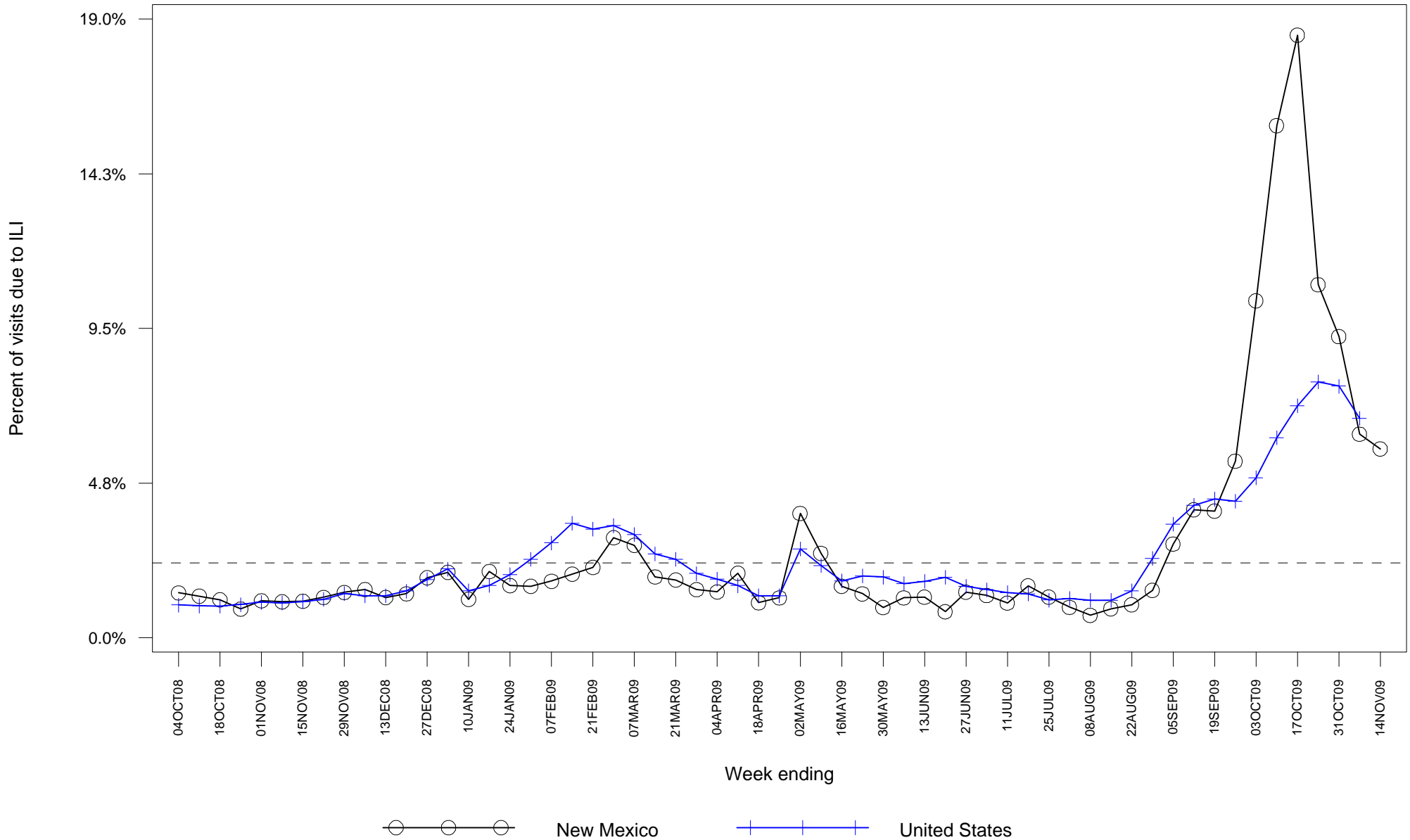
Laboratory-confirmed Influenza Hospitalization Surveillance

- Starting 10/12/09 the case definition for laboratory-confirmed influenza hospitalizations was expanded to include patients with positive rapid influenza and influenza fluorescent antibody tests. Previously the case definition only considered positive RT-PCR and viral culture results as confirmatory. This change was made to more accurately represent the burden of influenza-related hospitalizations in New Mexico.
- As of 11/18/09, there have been 909 hospitalizations related to laboratory-confirmed influenza infection in New Mexico, an increase of 71 from last week. The number of hospitalizations occurring during the week ending 11/14/09 declined compared to the previous week (Figure 3). Table 1 summarizes hospitalizations by county of residence.

Laboratory-confirmed Influenza Death Surveillance

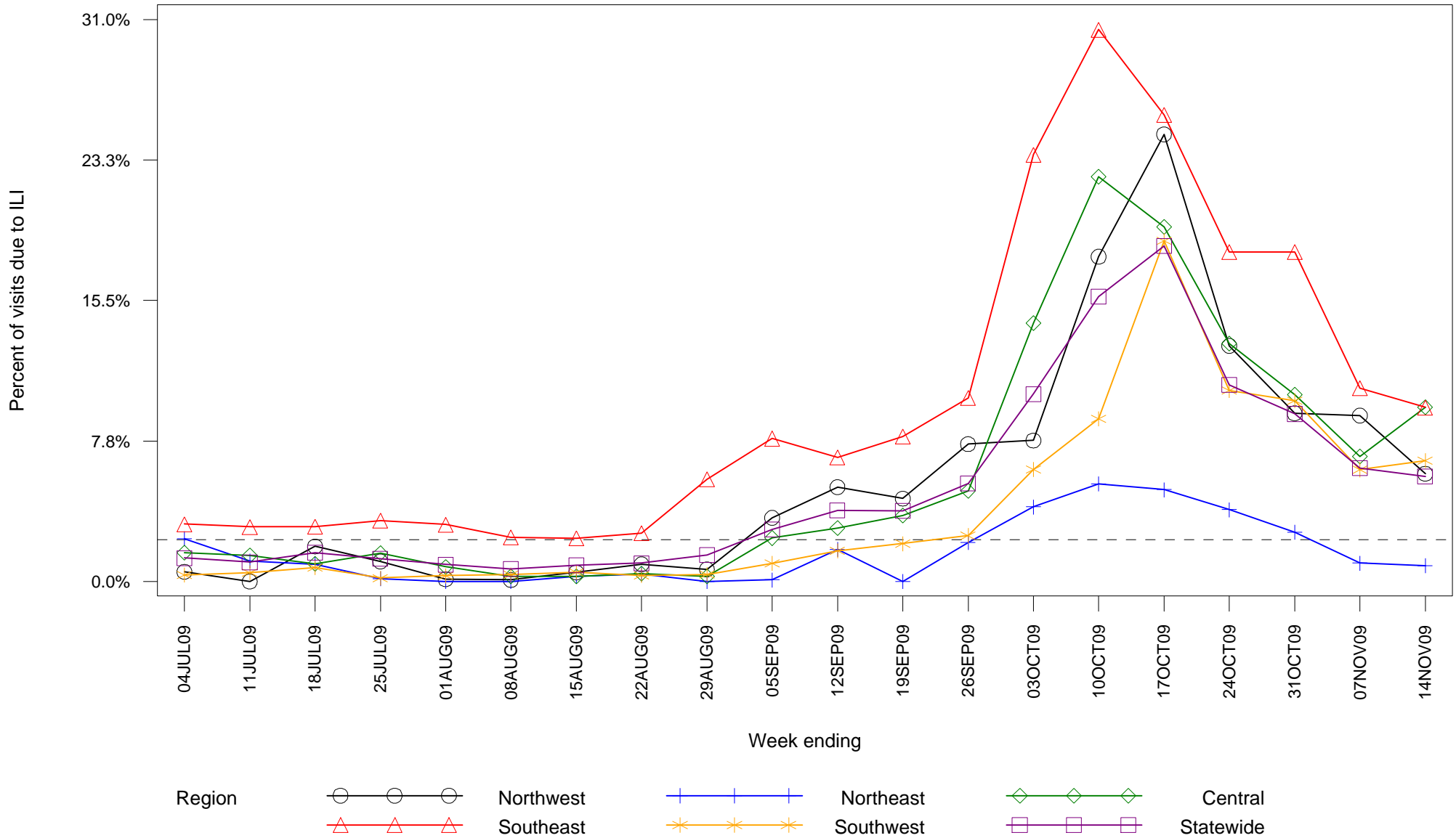
- As of 11/18/09, there have been 36 deaths related to laboratory-confirmed influenza infection in New Mexico. Seven new deaths were reported this week: a 43 year-old female from Bernalillo County with chronic medical conditions, a 57 year-old male from Bernalillo County with chronic medical conditions, a 62 year-old male from Bernalillo County with chronic medical conditions, a 58 year-old male from Bernalillo County with chronic medical conditions, a 29 year-old female from Dona Ana County without chronic medical conditions, a 12 year-old male from Dona Ana County with chronic medical conditions, and a 52 year-old male from Eddy County with chronic medical conditions. Table 2 summarizes deaths by county of residence.

**Figure 1: Percent of sentinel provider outpatient visits due to influenza-like illness (ILI)
New Mexico and United States**



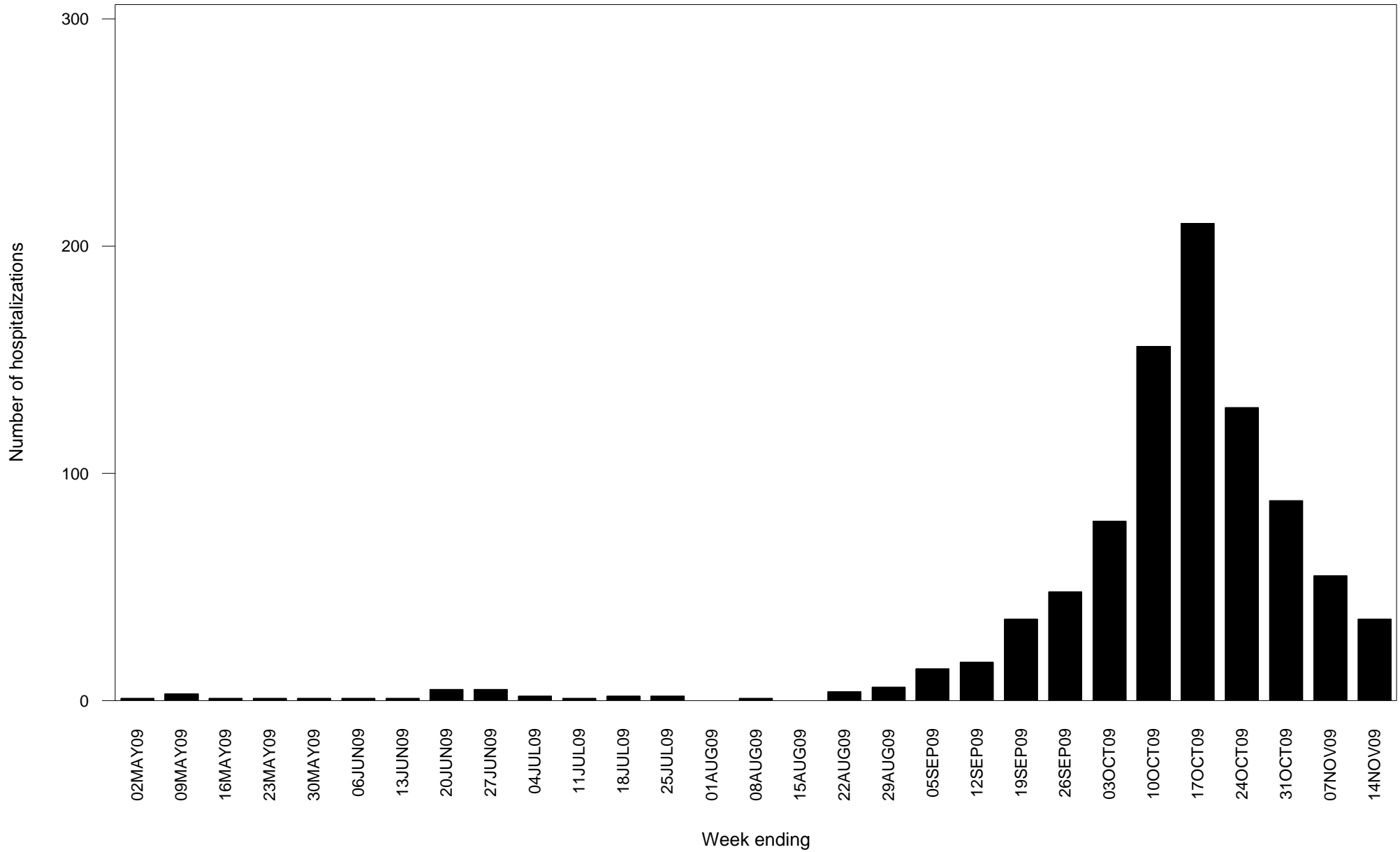
Dashed line indicates national baseline value of 2.3%. Reporting of US data is delayed a week.

Figure 2: Percent of sentinel provider outpatient visits due to influenza-like illness (ILI) New Mexico



Dashed line indicates national baseline value of 2.3%. The Southeast region consistently reports ILI visit percentages that are higher than other regions so differences between regions should be interpreted with caution.

**Figure 3: Laboratory-confirmed influenza hospitalizations by admission date
New Mexico**



Report date substituted for admission date for 95 hospitalizations for which admission date has not yet been determined.

**Table 1: Cumulative laboratory-confirmed influenza hospitalizations by county of residence
New Mexico**

County	Number
Bernalillo County	229
Catron County	1
Chaves County	13
Cibola County	12
Colfax County	20
Curry County	56
Dona Ana County	106
Eddy County	28
Grant County	12
Guadalupe County	1
Lea County	24
Lincoln County	6
Los Alamos County	4
Luna County	13
McKinley County	67
Mora County	1
Otero County	27
Quay County	5
Rio Arriba County	15
Roosevelt County	10
San Juan County	52
San Miguel County	5
Sandoval County	35
Santa Fe County	43

(Continued)

**Table 1: Cumulative laboratory-confirmed influenza hospitalizations by county of residence
New Mexico**

County	Number
Sierra County	8
Socorro County	14
Taos County	21
Torrance County	2
Union County	1
Unknown	47
Valencia County	31
Total	909

**Table 2: Cumulative laboratory-confirmed influenza deaths by county of residence
New Mexico**

County	Number
Bernalillo County	11
Chaves County	3
Colfax County	1
Dona Ana County	3
Eddy County	1
Lea County	1
Los Alamos County	1
McKinley County	2
Roosevelt County	1
San Juan County	3
Sandoval County	2
Santa Fe County	3
Sierra County	1
Socorro County	1
Valencia County	2
Total	36