



Influenza Surveillance Report

November 12, 2009

Outpatient Influenza-Like Illness (ILI) Surveillance

- For the week ending 11/7/09, visits to doctors for influenza-like illness (ILI) in New Mexico fell from 9.2% to 6.6% (Figure 1). The ILI visit percentage remains higher than what is expected during this time of year for both New Mexico and the United States.
- For the week ending 11/7/09, all regions experienced decreases in the percentage of outpatient visits for ILI (Figure 2). The percentage of outpatient visits for ILI in New Mexico regions were 1.3% in Northeast, 9.2% in Northwest, 6.9% in Central, 6.2% in Southwest, and 10.7% in Southeast.

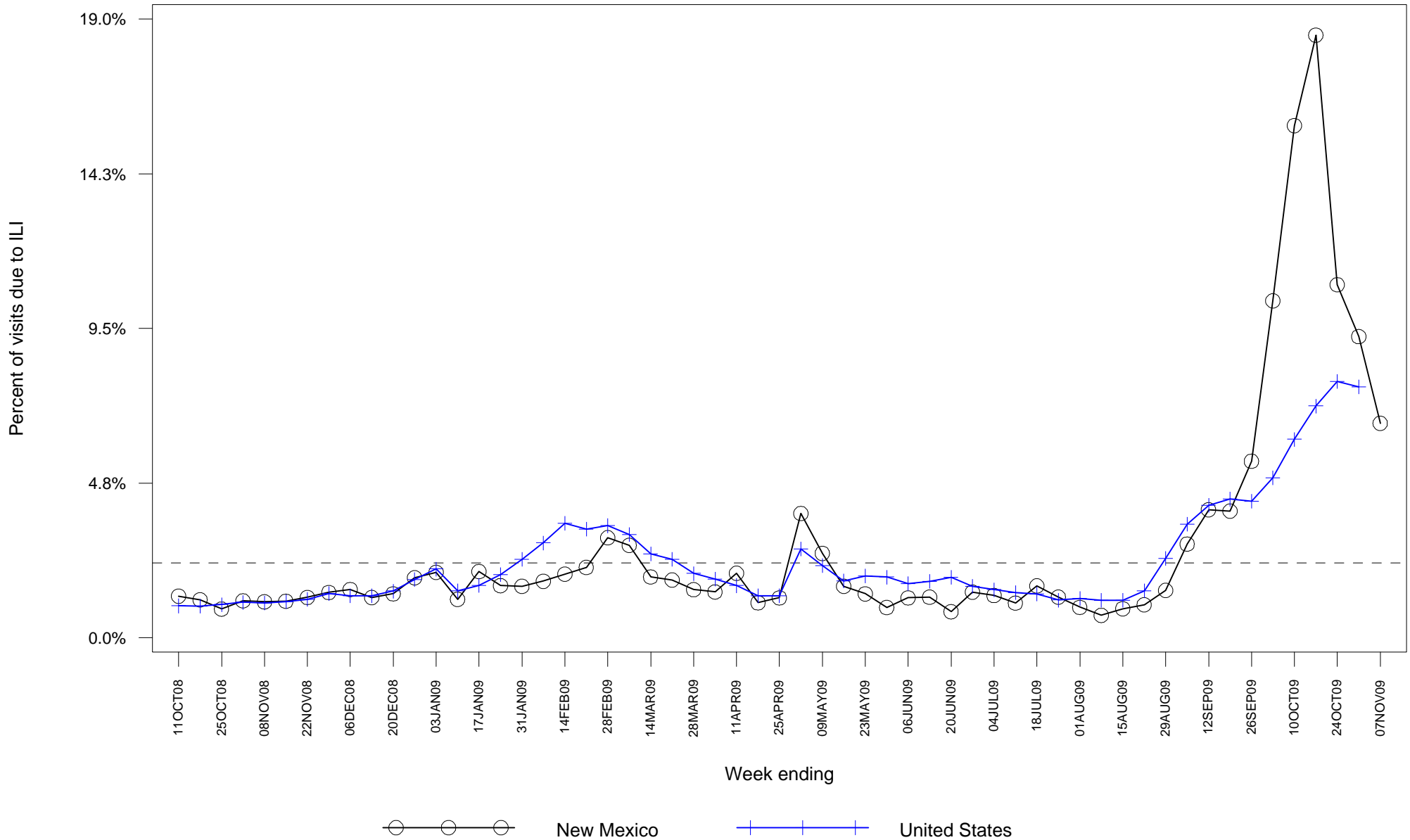
Laboratory-confirmed Influenza Hospitalization Surveillance

- Starting 10/12/09 the case definition for laboratory-confirmed influenza hospitalizations was expanded to include patients with positive rapid influenza and influenza fluorescent antibody tests. Previously the case definition only considered positive RT-PCR and viral culture results as confirmatory. This change was made to more accurately represent the burden of influenza-related hospitalizations in New Mexico.
- As of 11/12/09, there have been 838 hospitalizations related to laboratory-confirmed influenza infection in New Mexico, an increase of 107 from last week. The number of hospitalizations occurring during the week ending 11/7/09 declined compared to the previous week (Figure 3). Table 1 summarizes hospitalizations by county of residence.

Laboratory-confirmed Influenza Death Surveillance

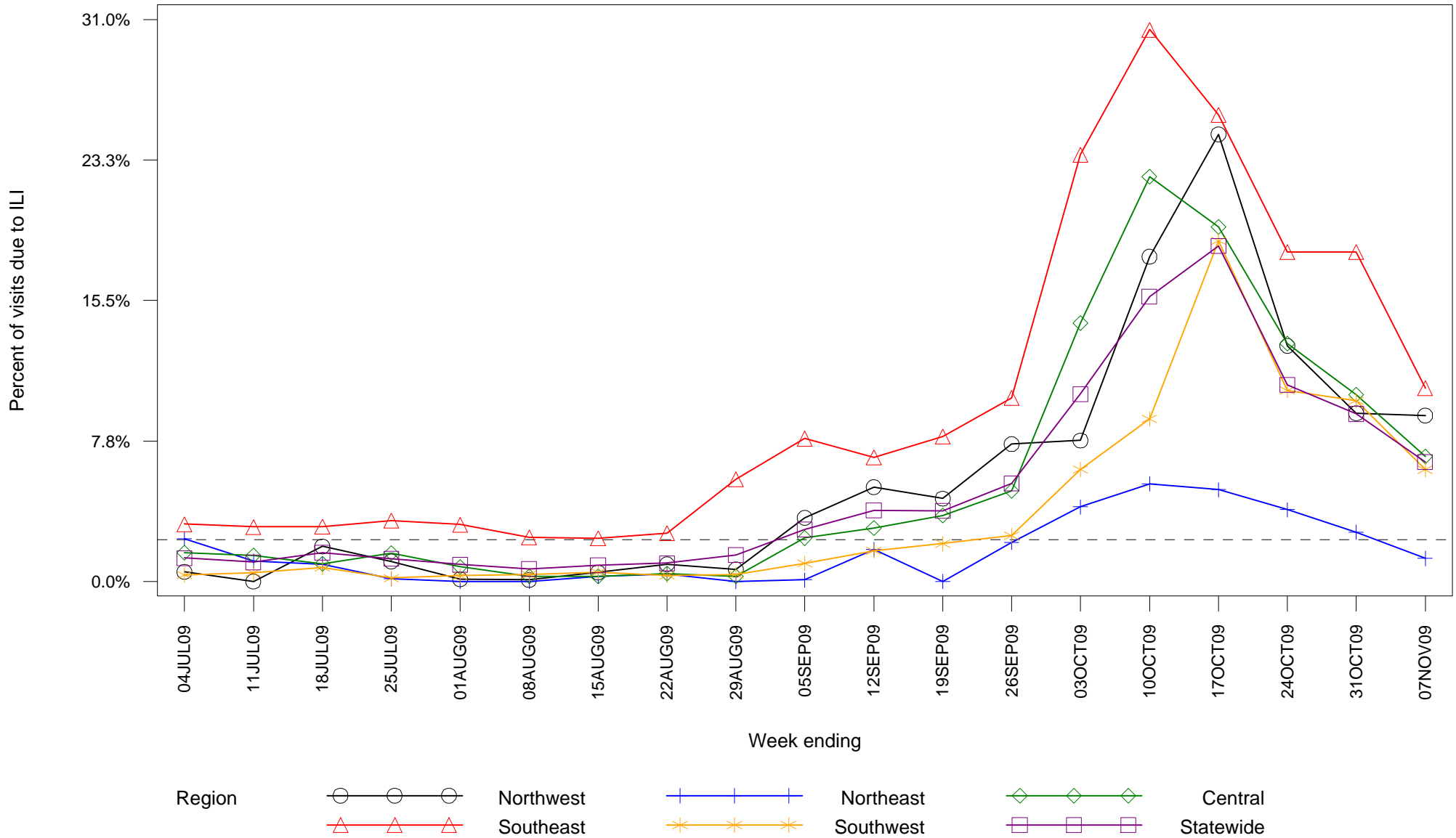
- As of 11/12/09, there have been 29 deaths related to laboratory-confirmed influenza infection in New Mexico. Two persons previously reported as residents of Cibola County were determined to be residents of Bernalillo County at the times of their deaths. Three new deaths were reported this week: a 66 year-old female from Bernalillo County with chronic medical conditions, a 42 year-old male from Santa Fe County with chronic medical conditions, and an 18 year-old male from Bernalillo County without chronic medical conditions. Table 2 summarizes deaths by county of residence.

**Figure 1: Percent of sentinel provider outpatient visits due to influenza-like illness (ILI)
New Mexico and United States**



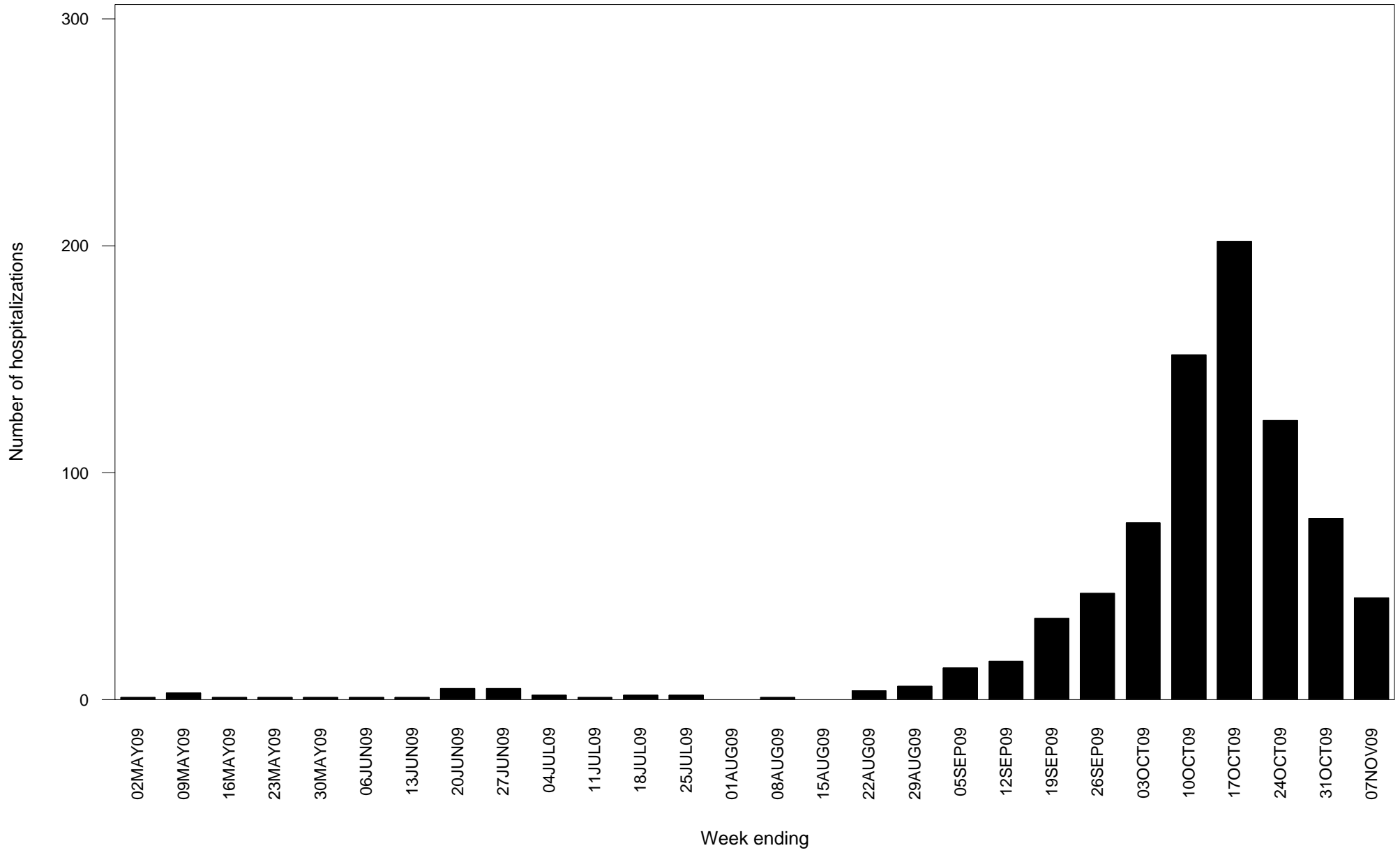
Dashed line indicates national baseline value of 2.3%. Reporting of US data is delayed a week.

Figure 2: Percent of sentinel provider outpatient visits due to influenza-like illness (ILI) New Mexico



Dashed line indicates national baseline value of 2.3%. The Southeast region consistently reports ILI visit percentages that are higher than other regions so differences between regions should be interpreted with caution.

**Figure 3: Laboratory-confirmed influenza hospitalizations by admission date
New Mexico**



Report date substituted for admission date for 103 hospitalizations for which admission date has not yet been determined.

**Table 1: Cumulative laboratory-confirmed influenza hospitalizations by county of residence
New Mexico**

County	Number
Bernalillo County	204
Chaves County	13
Cibola County	13
Colfax County	20
Curry County	53
Dona Ana County	88
Eddy County	28
Grant County	8
Guadalupe County	1
Lea County	24
Lincoln County	6
Los Alamos County	1
Luna County	13
McKinley County	64
Mora County	1
Otero County	27
Quay County	4
Rio Arriba County	13
Roosevelt County	10
San Juan County	50
San Miguel County	4
Sandoval County	32
Santa Fe County	43
Sierra County	8

(Continued)

**Table 1: Cumulative laboratory-confirmed influenza hospitalizations by county of residence
New Mexico**

County	Number
Socorro County	13
Taos County	18
Torrance County	2
Union County	1
Unknown	49
Valencia County	27
Total	838

**Table 2: Cumulative lab-confirmed influenza deaths by county of residence
New Mexico**

County	Number
Bernalillo County	7
Chaves County	3
Colfax County	1
Dona Ana County	1
Lea County	1
Los Alamos County	1
McKinley County	2
Roosevelt County	1
San Juan County	3
Sandoval County	2
Santa Fe County	3
Sierra County	1
Socorro County	1
Valencia County	2
Total	29