



Influenza Surveillance Report

November 4, 2009

Outpatient Influenza-Like Illness (ILI) Surveillance

- For the week ending 10/31/09, visits to doctors for influenza-like illness (ILI) in New Mexico fell from 10.8% to 9.2% (Figure 1). The ILI visit percentage remains higher than what is expected during this time of year for both New Mexico and the United States.
- For the week ending 10/31/09, four regions experienced decreases in the percentage of outpatient visits for ILI and one region experienced no change (Figure 2). The percentage of outpatient visits for ILI in New Mexico regions were 2.7% in Northeast, 9.3% in Northwest, 10.3% in Central, 10.0% in Southwest, and 18.2% in Southeast.

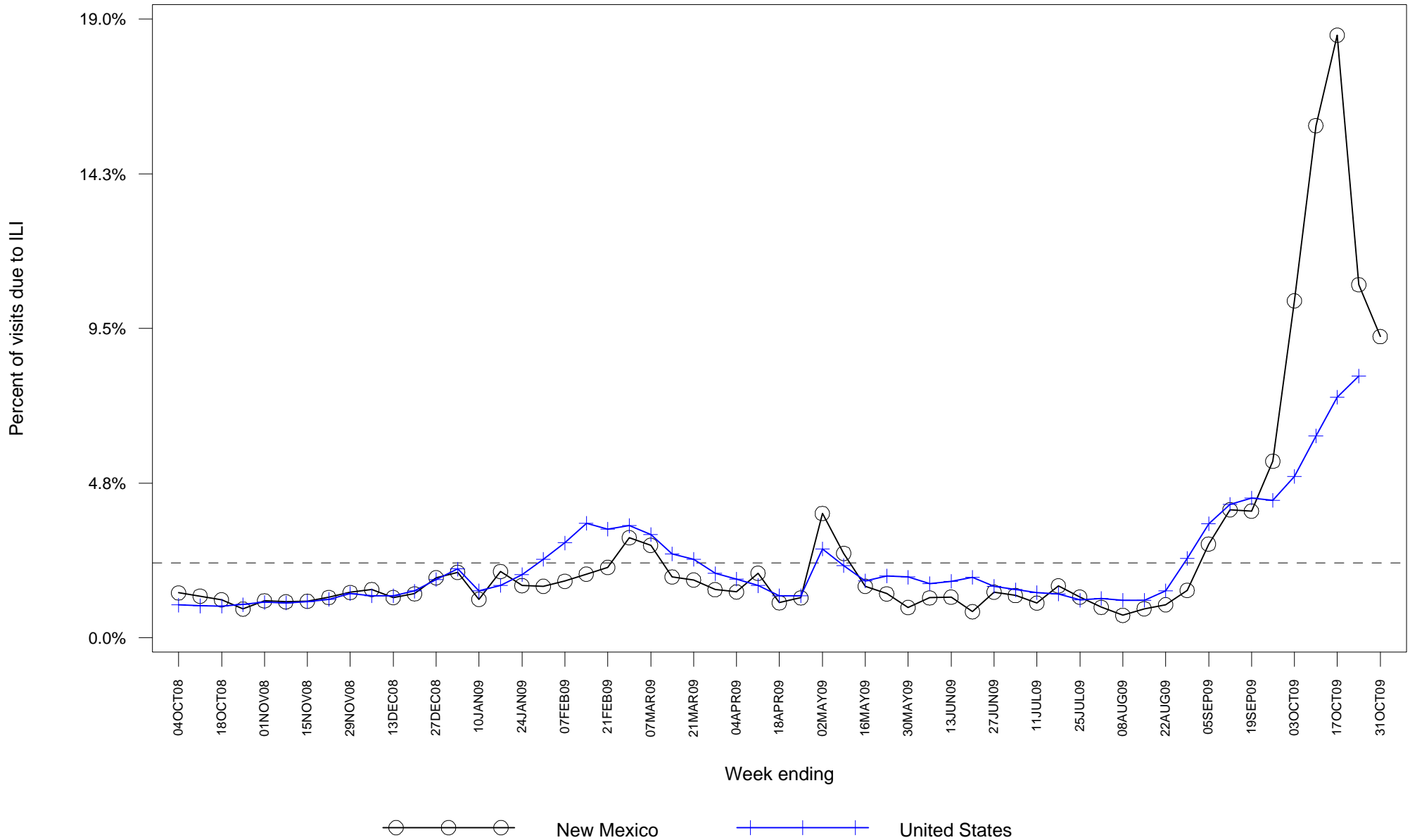
Laboratory-confirmed Influenza Hospitalization Surveillance

- Starting 10/12/09 the case definition for laboratory-confirmed influenza hospitalizations was expanded to include patients with positive rapid influenza and influenza fluorescent antibody tests. Previously the case definition only considered positive RT-PCR and viral culture results as confirmatory. This change was made to more accurately represent the burden of influenza-related hospitalizations in New Mexico.
- As of 11/4/09, there have been 731 hospitalizations related to laboratory-confirmed influenza infection in New Mexico, an increase of 97 from last week. The number of hospitalizations occurring during the week ending 10/31/09 declined compared to the previous week (Figure 3). Table 1 summarizes hospitalizations by county of residence.

Laboratory-confirmed Influenza Death Surveillance

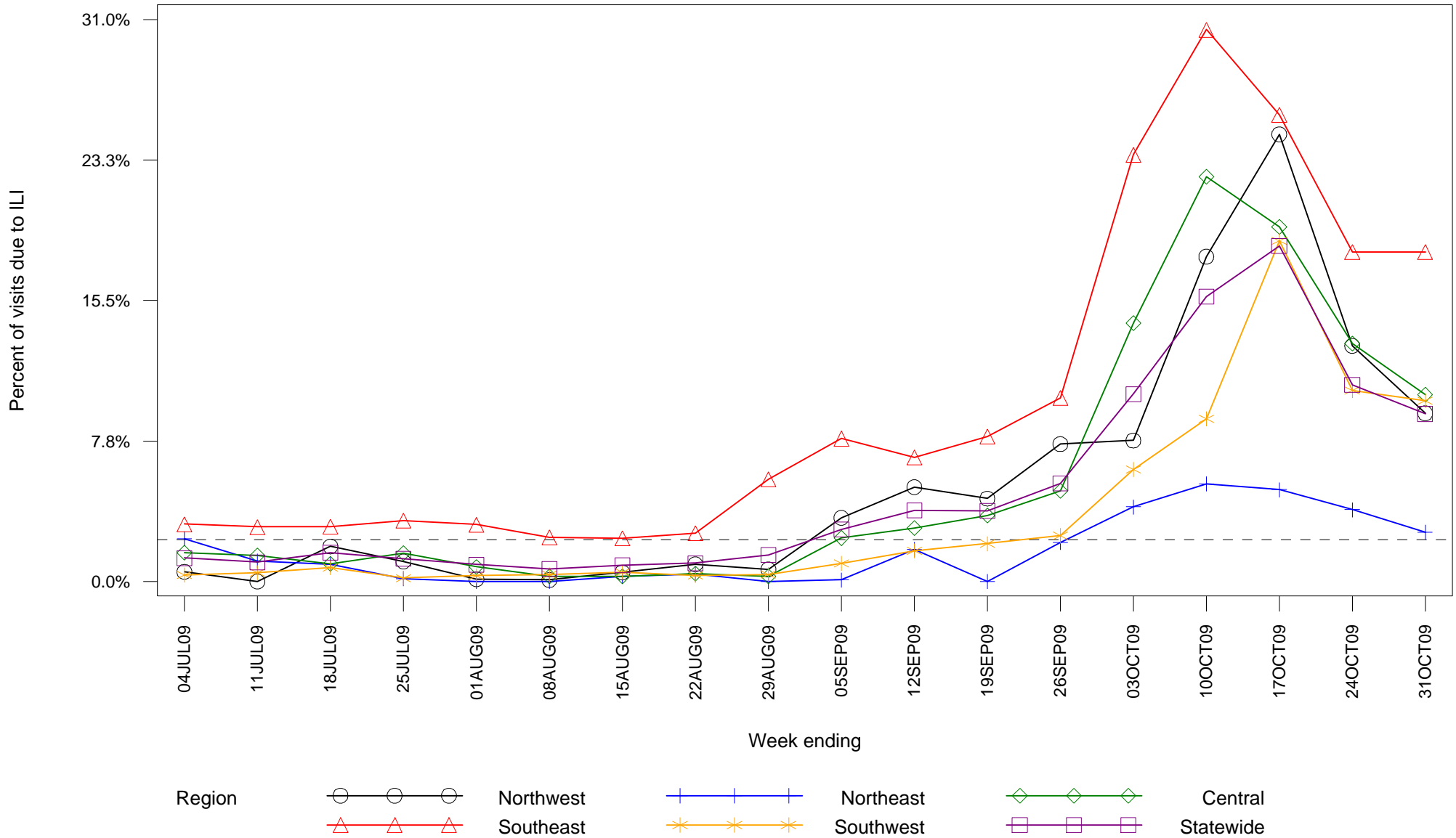
- As of 11/4/09, there have been 26 deaths related to laboratory-confirmed influenza infection in New Mexico. The 49 year-old male whose death was reported last week has been determined to be a resident of another state and is no longer included in the count. Six new deaths were reported this week: a 27 year-old female from Dona Ana County without chronic medical conditions, a 53 year-old male from McKinley County without chronic medical conditions, a 11-year-old male from Bernalillo County with chronic medical conditions, a 4 year-old male from San Juan County without chronic medical conditions, a 53 year-old male from Bernalillo County with chronic medical conditions and a 51 year-old male from Valencia County with chronic medical conditions. Table 2 summarizes deaths by county of residence.

Figure 1: Percent of sentinel provider outpatient visits due to influenza-like illness (ILI) New Mexico and United States



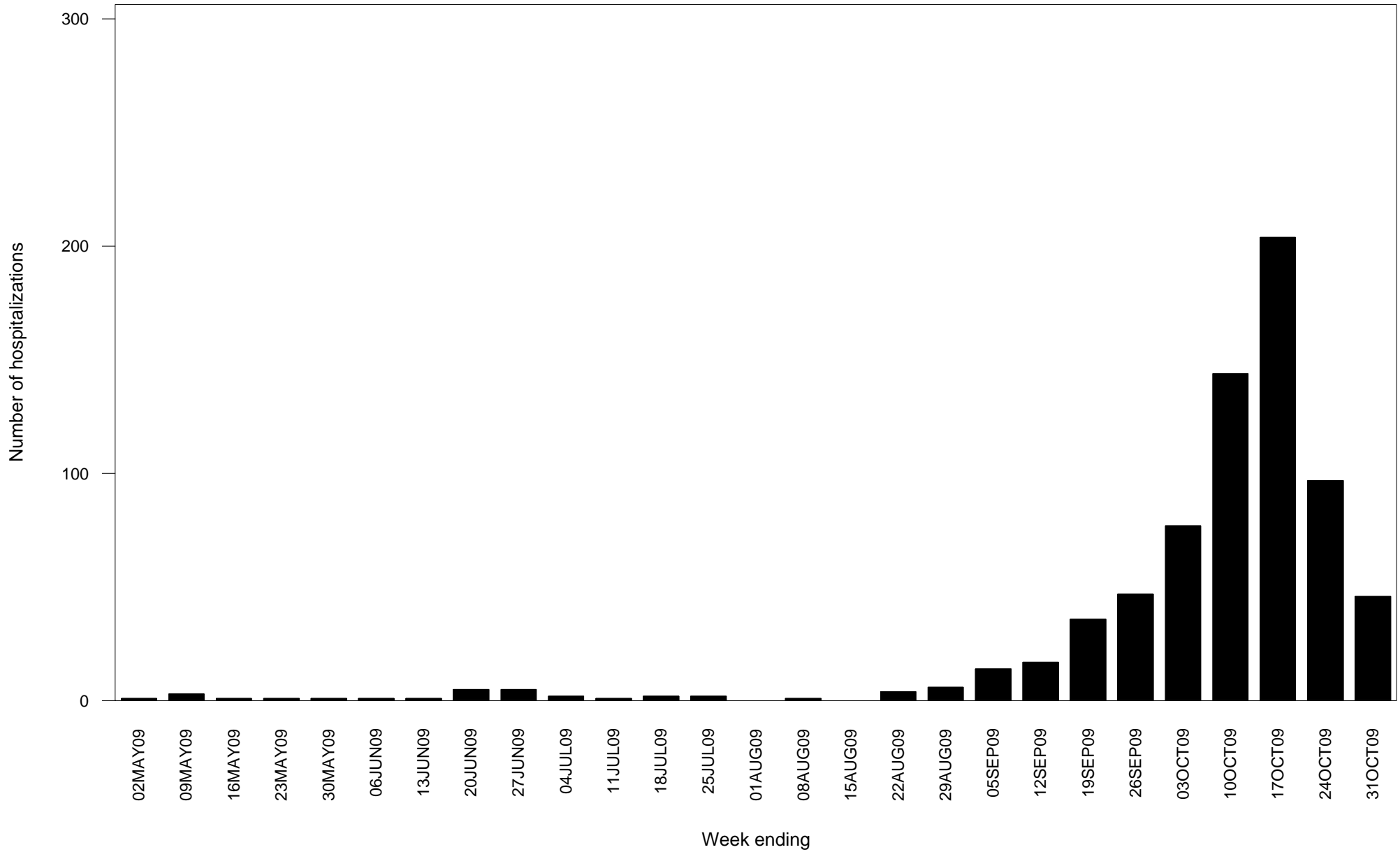
Dashed line indicates national baseline value of 2.3%. Reporting of US data is delayed a week.

Figure 2: Percent of sentinel provider outpatient visits due to influenza-like illness (ILI) New Mexico



Dashed line indicates national baseline value of 2.3%. The Southeast region consistently reports ILI visit percentages that are higher than other regions so differences between regions should be interpreted with caution.

**Figure 3: Laboratory-confirmed influenza hospitalizations by admission date
New Mexico**



Report date substituted for admission date for 118 hospitalizations for which admission date has not yet been determined.

**Table 1: Cumulative laboratory-confirmed influenza hospitalizations by county of residence
New Mexico**

County	Number
Bernalillo County	175
Chaves County	14
Cibola County	13
Colfax County	18
Curry County	36
Dona Ana County	74
Eddy County	23
Grant County	5
Guadalupe County	1
Lea County	23
Lincoln County	6
Los Alamos County	1
Luna County	3
McKinley County	63
Mora County	1
Otero County	27
Quay County	4
Rio Arriba County	13
Roosevelt County	10
San Juan County	45
San Miguel County	4
Sandoval County	28
Santa Fe County	34
Sierra County	8

(Continued)

**Table 1: Cumulative laboratory-confirmed influenza hospitalizations by county of residence
New Mexico**

County	Number
Socorro County	13
Taos County	18
Torrance County	2
Union County	1
Unknown	44
Valencia County	24
Total	731

**Table 2: Cumulative lab-confirmed influenza deaths by county of residence
New Mexico**

County	Number
Bernalillo County	4
Chaves County	3
Cibola County	1
Colfax County	1
Dona Ana County	1
Lea County	1
Los Alamos County	1
McKinley County	2
Roosevelt County	1
San Juan County	3
Sandoval County	2
Santa Fe County	2
Sierra County	1
Socorro County	1
Valencia County	2
Total	26