



Influenza Surveillance Report

October 28, 2009

Outpatient Influenza-Like Illness (ILI) Surveillance

- For the week ending 10/24/09, visits to doctors for influenza-like illness (ILI) in New Mexico fell from 18.4% to 10.5% (Figure 1). The ILI visit percentage remains higher than what is expected during this time of year for both New Mexico and the United States.
- For the week ending 10/24/09, all regions experienced decreases in the percentage of outpatient visits for ILI (Figure 2). The percentage of outpatient visits for ILI in New Mexico regions were 3.8% in Northeast, 13.0% in Northwest, 13.1% in Central, 7.3% in Southwest, and 18.2% in Southeast.

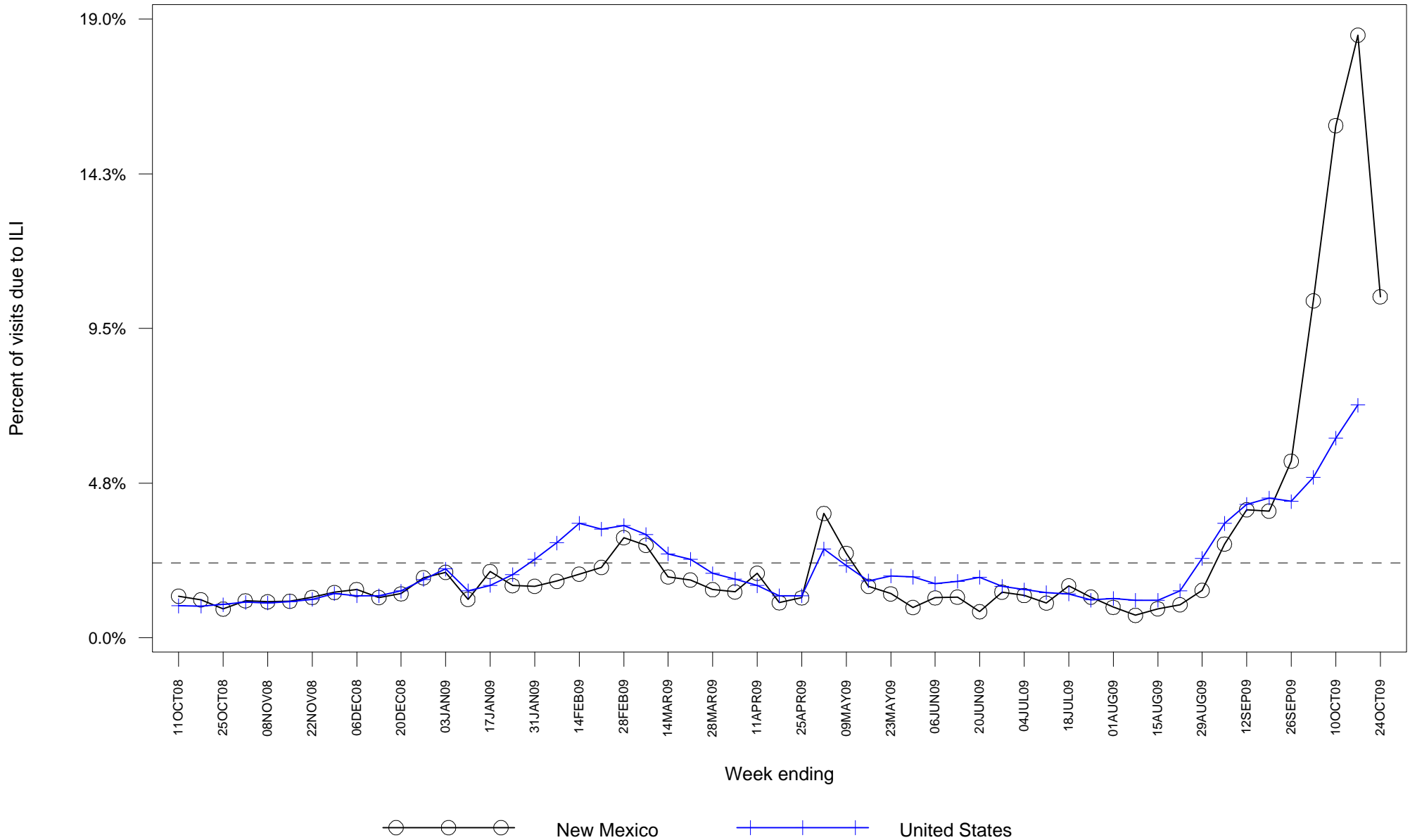
Laboratory-confirmed Influenza Hospitalization Surveillance

- Starting 10/12/09 the case definition for laboratory-confirmed influenza hospitalizations was expanded to include patients with positive rapid influenza and influenza fluorescent antibody tests. Previously the case definition only considered positive RT-PCR and viral culture results as confirmatory. This change was made to more accurately represent the burden of influenza-related hospitalizations in New Mexico.
- As of 10/28/09, there have been 634 hospitalizations related to laboratory-confirmed influenza infection in New Mexico, an increase of 166 from last week. The number of hospitalizations occurring during the week ending 10/24/09 declined compared to the previous week (Figure 3). Table 1 summarizes hospitalizations by county of residence.

Laboratory-confirmed Influenza Death Surveillance

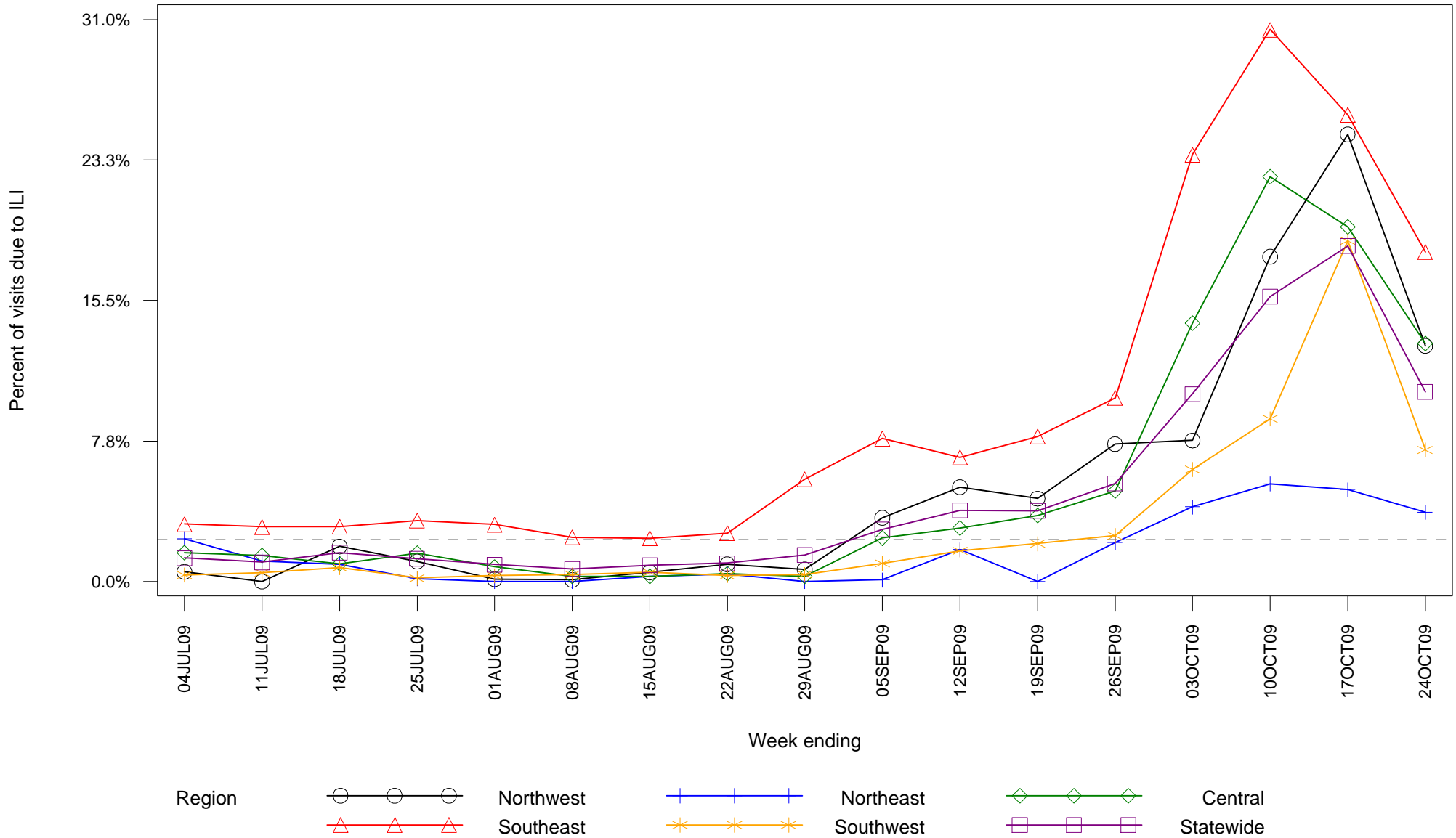
- As of 10/28/09, there have been 21 deaths related to laboratory-confirmed influenza infection in New Mexico. Five new deaths were reported this week: a 52 year-old male from Sandoval County with chronic medical conditions, a 51 year-old female from San Juan County with chronic medical conditions, a 69 year-old male from Bernalillo County with chronic medical conditions, a 73 year-old male from Socorro County with chronic medical conditions and a 49 year-old male with chronic medical conditions whose residence has not yet been determined. Table 2 summarizes deaths by county of residence.

**Figure 1: Percent of sentinel provider outpatient visits due to influenza-like illness (ILI)
New Mexico and United States**



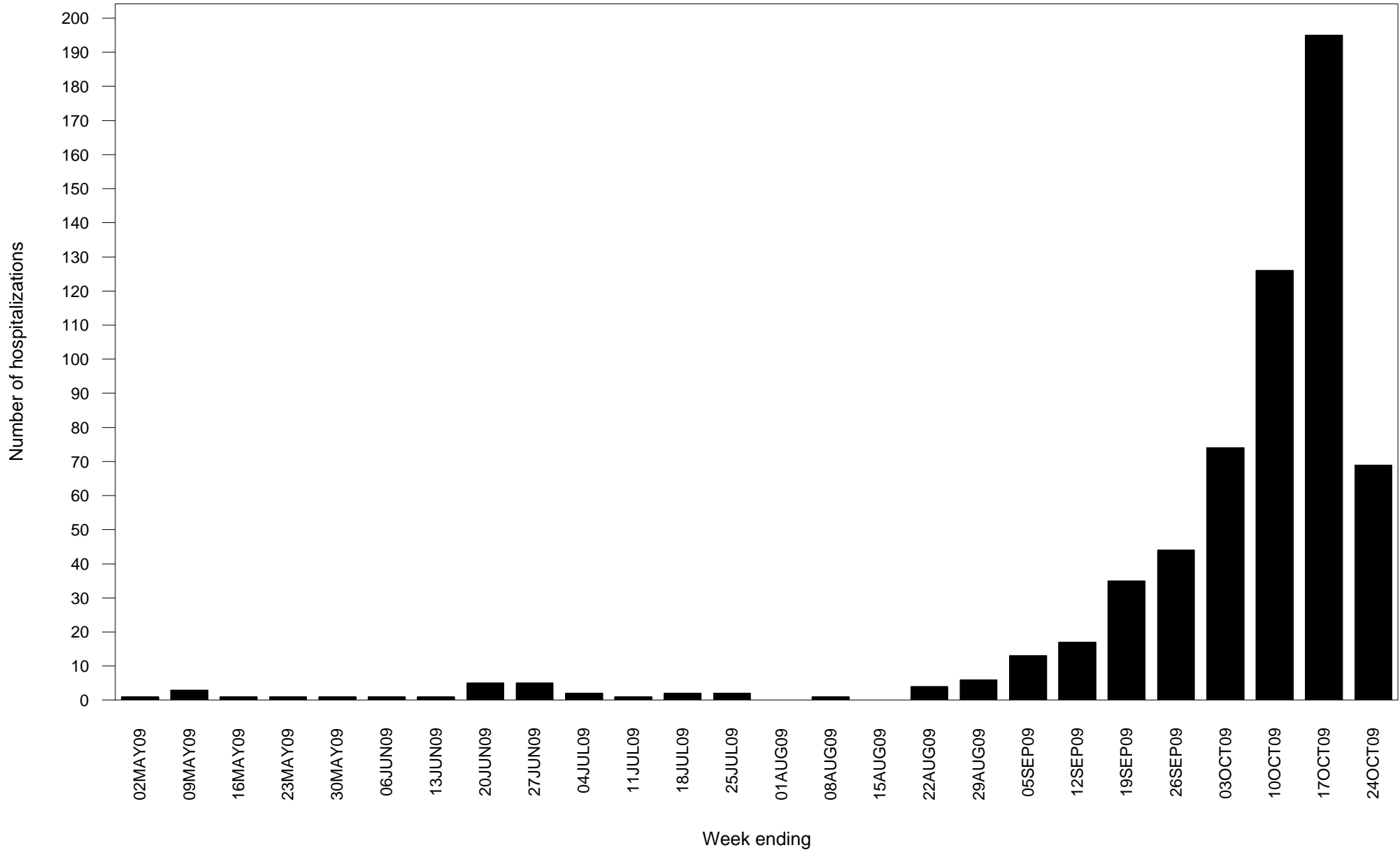
Dashed line indicates national baseline value of 2.3%. Reporting of US data is delayed a week.

Figure 2: Percent of sentinel provider outpatient visits due to influenza-like illness (ILI) New Mexico



Dashed line indicates national baseline value of 2.3%. The Southeast region consistently reports ILI visit percentages that are higher than other regions so differences between regions should be interpreted with caution.

**Figure 3: Laboratory-confirmed influenza hospitalizations by admission date
New Mexico**



Report date substituted for admission date for 127 hospitalizations for which admission date has not yet been determined.

**Table 1: Cumulative laboratory-confirmed influenza hospitalizations by county of residence
New Mexico**

County	Number
Bernalillo County	158
Chaves County	12
Cibola County	13
Colfax County	14
Curry County	36
Dona Ana County	56
Eddy County	19
Grant County	3
Guadalupe County	1
Lea County	21
Lincoln County	4
Los Alamos County	1
Luna County	2
McKinley County	54
Mora County	1
Otero County	20
Quay County	4
Rio Arriba County	12
Roosevelt County	10
San Juan County	34
San Miguel County	1
Sandoval County	22
Santa Fe County	24
Sierra County	8

(Continued)

**Table 1: Cumulative laboratory-confirmed influenza hospitalizations by county of residence
New Mexico**

County	Number
Socorro County	10
Taos County	15
Torrance County	1
Union County	1
Unknown	55
Valencia County	22
Total	634

**Table 2: Cumulative lab-confirmed influenza deaths by county of residence
New Mexico**

County	Number
Bernalillo County	3
Chaves County	3
Colfax County	1
Lea County	1
Los Alamos County	1
McKinley County	1
Roosevelt County	1
San Juan County	2
Sandoval County	2
Santa Fe County	2
Sierra County	1
Socorro County	1
Unknown	1
Valencia County	1
Total	21