



Influenza Surveillance Report

October 21, 2009

Outpatient Influenza-Like Illness (ILI) Surveillance

- For the week ending 10/17/09, visits to doctors for influenza-like illness (ILI) in New Mexico rose from 15.4% to 19.8% (Figure 1). The ILI visit percentage remains dramatically higher than what is expected during this time of year for both New Mexico and the United States.
- For the week ending 10/17/09, the Northwest and Southwest regions experienced increases in the percentage of outpatient visits for ILI, while the percentage in the Central and Southeast regions fell slightly (Figure 2). The percentage of outpatient visits for ILI in New Mexico regions were 5.1% in Northeast, 18.8% in Southwest, 35.3% in Northwest, 19.6% in Central, and 25.7% in Southeast.

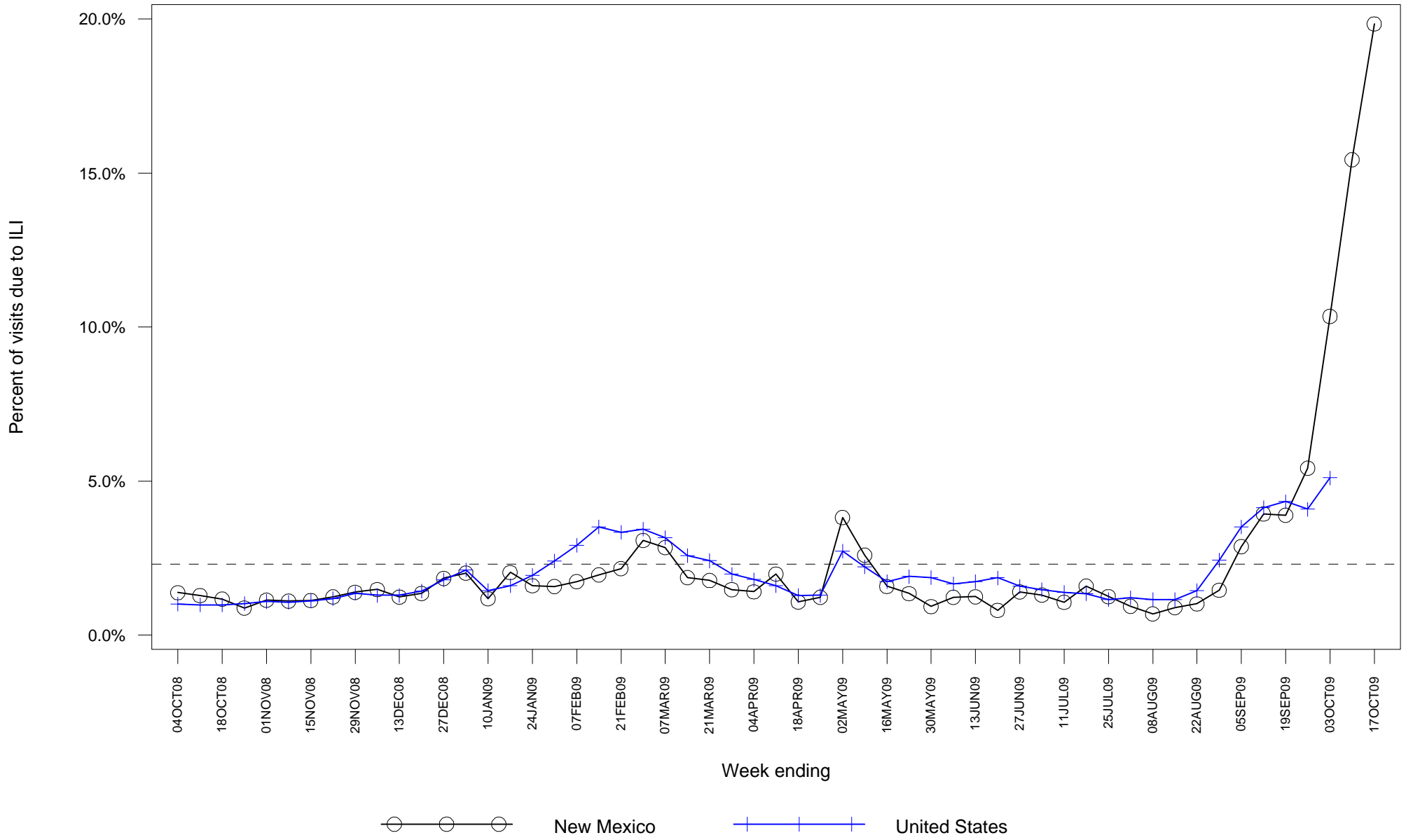
Laboratory-confirmed Influenza Hospitalization Surveillance

- Starting 10/12/09 the case definition for laboratory-confirmed influenza hospitalizations was expanded to include patients with positive rapid influenza and influenza fluorescent antibody tests. Previously the case definition only considered positive RT-PCR and viral culture results as confirmatory. This change was made to more accurately represent the burden of influenza-related hospitalizations in New Mexico.
- As of 10/21/09, there have been 468 hospitalizations related to laboratory-confirmed influenza infection in New Mexico, an increase of 247 from last week. Table 1 summarizes hospitalizations by county of residence.

Laboratory-confirmed Influenza Death Surveillance

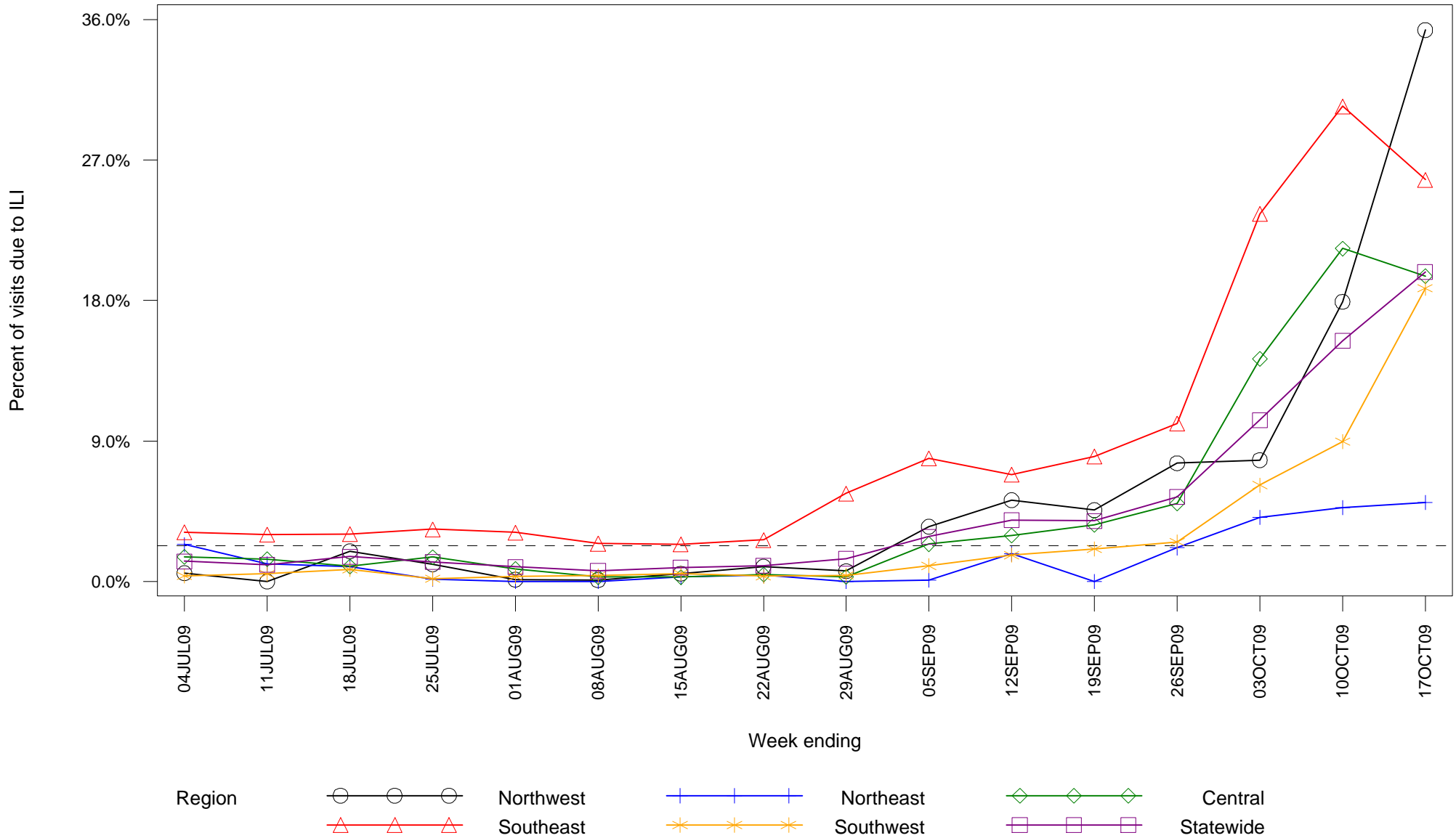
- As of 10/21/09, there have been 16 deaths related to laboratory-confirmed influenza infection in New Mexico. Four new deaths were reported this week: a 16 year-old female from Chaves County with chronic medical conditions, a 51 year-old male from Santa Fe County with chronic medical conditions, a 6 year-old female from Santa Fe County without chronic medical conditions and a 47 year-old female from Valencia County with chronic medical conditions. Table 2 summarizes deaths by county of residence.

**Figure 1: Percent of sentinel provider outpatient visits due to influenza-like illness (ILI)
New Mexico and United States**



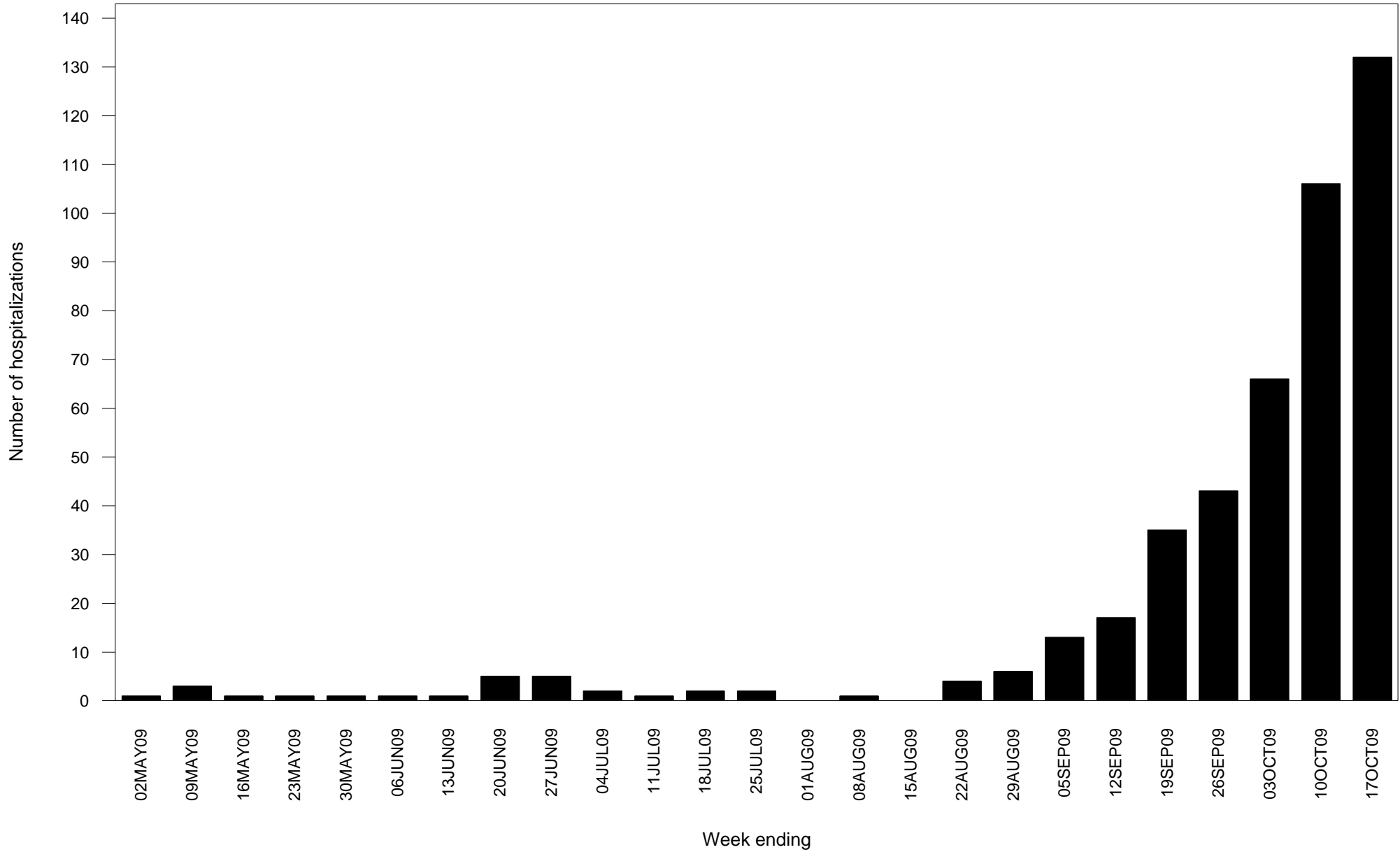
Dashed line indicates national baseline value of 2.3%. Reporting of US data is delayed a week.

Figure 2: Percent of sentinel provider outpatient visits due to influenza-like illness (ILI) New Mexico



Dashed line indicates national baseline value of 2.3%. The Southeast region consistently reports ILI visit percentages that are higher than other regions so differences between regions should be interpreted with caution.

**Figure 3: Laboratory-confirmed influenza hospitalizations by admission date
New Mexico**



Report date substituted for admission date for 120 hospitalizations for which admission date has not yet been determined.

**Table 1: Cumulative laboratory-confirmed influenza hospitalizations by county of residence
New Mexico**

County	Number
Bernalillo County	129
Chaves County	11
Cibola County	10
Colfax County	10
Curry County	23
Dona Ana County	33
Eddy County	12
Grant County	6
Guadalupe County	1
Lea County	15
Lincoln County	3
Los Alamos County	1
Luna County	1
McKinley County	43
Mora County	1
Otero County	10
Quay County	2
Rio Arriba County	10
Roosevelt County	6
San Juan County	28
San Miguel County	1
Sandoval County	19
Santa Fe County	15
Sierra County	7

(Continued)

**Table 1: Cumulative laboratory-confirmed influenza hospitalizations by county of residence
New Mexico**

County	Number
Socorro County	8
Taos County	15
Torrance County	1
Union County	1
Unknown	30
Valencia County	16
Total	468

**Table 2: Cumulative lab-confirmed influenza deaths by county of residence
New Mexico**

County	Number
Bernalillo County	2
Chaves County	3
Colfax County	1
Lea County	1
Los Alamos County	1
McKinley County	1
Roosevelt County	1
San Juan County	1
Sandoval County	1
Santa Fe County	2
Sierra County	1
Valencia County	1
Total	16