

**New Mexico Department of Health
2012 Weekly Infectious Disease Report
Week 4
January 22, 2012 - January 28, 2012**



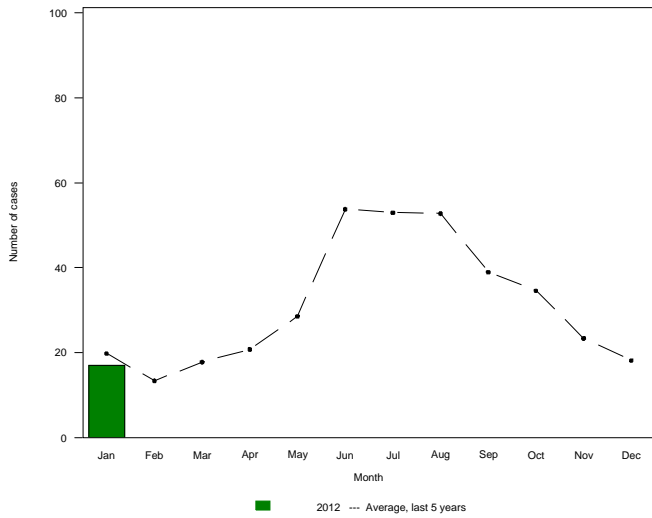
This report is prepared by the Infectious Disease Epidemiology Bureau (IDEB) for notifiable infectious diseases reported through the New Mexico Electronic Disease Surveillance Systems (NM-EDSS). NM-EDSS is a web-based system used by public health staff throughout the state to track investigations of suspected, probable and confirmed cases of notifiable infectious diseases. Data for the current year are provisional and subject to change upon the completion of ongoing disease investigations. Data for prior years are also subject to minor revisions due to corrections or identification of historical cases. Questions regarding the content of this report should be referred to the IDEB Surveillance Team at 505-827-0006.

Sexually Transmitted Diseases, Tuberculosis and HIV/AIDS data are currently reported through other systems. For information on these diseases, contact the responsible programs directly: Sexually Transmitted Diseases, 505-476-3611, Tuberculosis, 505-827-2500, HIV/AIDS, 505-476-3515.

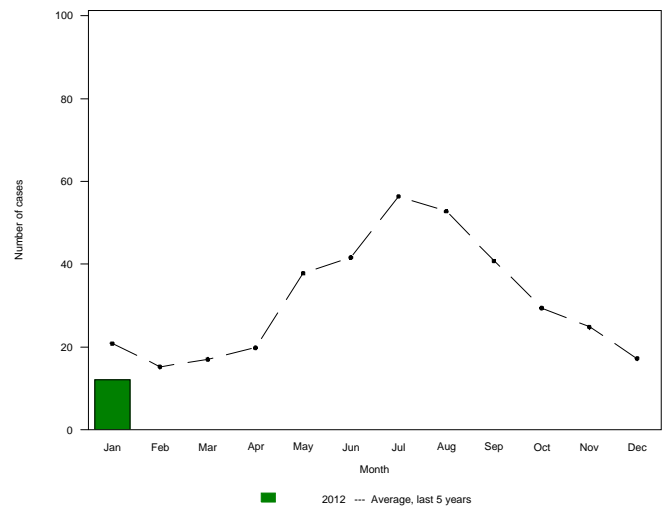
Monthly Trends for Selected Notifiable Infectious Diseases As of January 28, 2012

Includes probable and confirmed cases only.
Data for the current year are provisional and may change significantly upon the completion of ongoing investigations.
Data for prior years are also subject to minor revisions due to corrections or identification of historical cases.

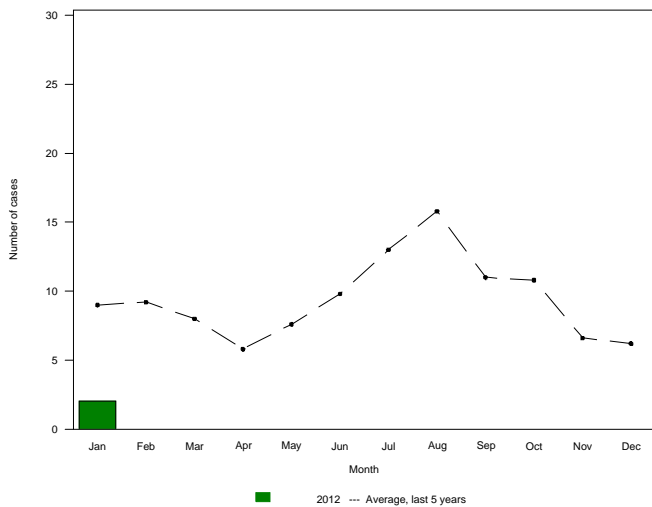
Incidence of Campylobacteriosis by Month



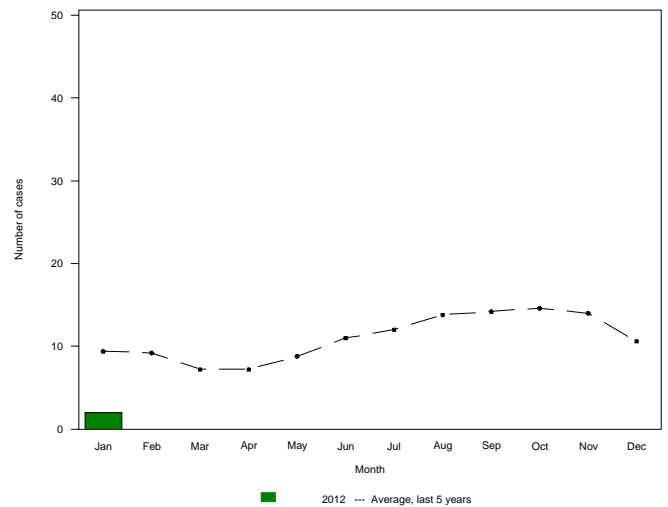
Incidence of Salmonellosis by Month



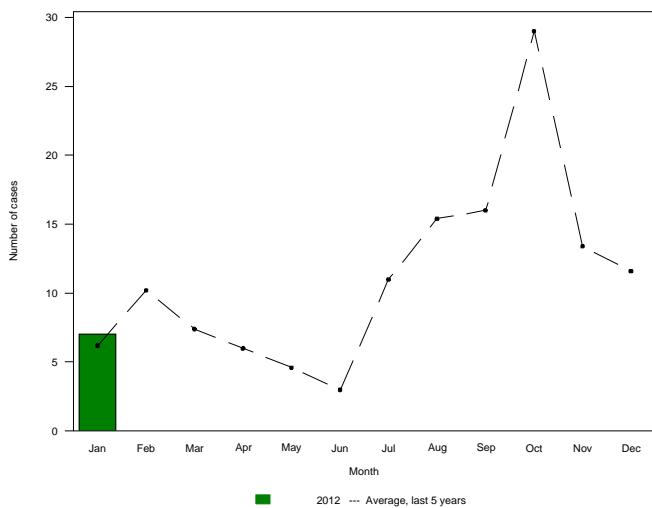
Incidence of Giardiasis by Month



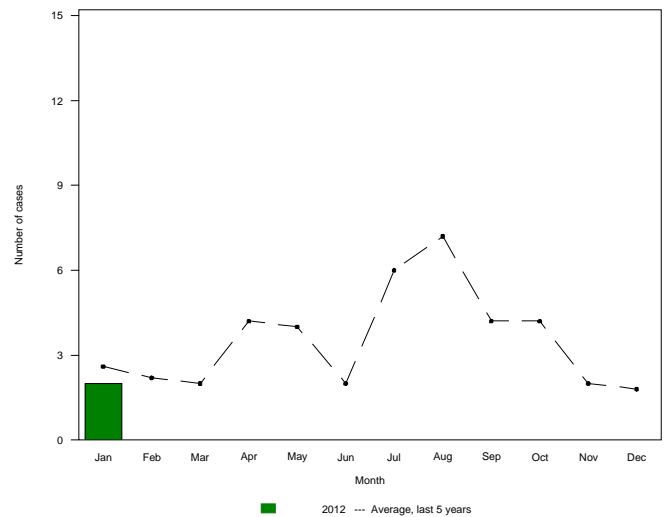
Incidence of Shigellosis by Month



Incidence of Pertussis by Month



Incidence of Shiga toxin-producing E. coli by Month



Summary of Notifiable Infectious Diseases Reported to the New Mexico Electronic Disease Surveillance System (NM-EDSS) As of January 28, 2012

Includes probable and confirmed cases only.
Data for the current year are provisional and may change significantly upon the completion of ongoing investigations.
Data for prior years are also subject to minor revisions due to corrections or identification of historical cases.

Condition	This week	5-year weekly average	Week diff	Last 4 weeks	5-year 4-week average	Last 4 weeks diff	YTD 2012	5-year YTD average	YTD diff	Total 2011	Total 2010
Botulism, foodborne	0	0	0	0	0	0	0	0	0	0	1
Botulism, infant	0	0	0	0	0	0	0	0	0	2	1
Botulism, wound	0	0	0	0	0	0	0	0	0	0	0
Brucellosis	0	0	0	0	0	0	0	0	0	2	2
Campylobacteriosis	2	4	-2	17	18	-1	17	19	-2	353	427
Cholera	0	0	0	0	0	0	0	0	0	1	0
Coccidioidomycosis	0	1	-1	1	4	-3	1	3	-2	75	55
Colorado tick fever	0	0	0	0	0	0	0	0	0	0	0
Cryptosporidiosis	0	2	-2	4	8	-4	4	7	-3	134	141
Cyclosporiasis	0	0	0	0	0	0	0	0	0	1	0
Dengue Fever	0	0	0	0	0	0	0	0	0	2	1
Ehrlichiosis, chaffeensis	0	0	0	0	0	0	0	0	0	1	0
Giardiasis	0	2	-2	2	8	-6	2	8	-6	107	111
Group A Streptococcus, invasive	0	3	-3	9	13	-4	9	15	-6	139	108
Group B Streptococcus, invasive	0	2	-2	6	9	-3	6	9	-3	167	176
Haemophilus influenzae, invasive	0	1	-1	3	4	-1	3	4	-1	44	46
Hansen disease (Leprosy)	0	0	0	0	0	0	0	0	0	0	0
Hantavirus pulmonary syndrome	0	0	0	0	0	0	0	0	0	5	2
Hemolytic uremic synd,postdiarrheal	0	0	0	0	0	0	0	0	0	2	3
Hepatitis A, acute	0	0	0	0	1	-1	0	1	-1	7	5
Hepatitis B Viral Infection, Perinatal	0	0	0	0	0	0	0	0	0	0	0
Hepatitis B virus infection, Chronic	0	2	-2	4	10	-6	4	11	-7	133	105
Hepatitis B, acute	0	0	0	0	1	-1	0	1	-1	10	5
Hepatitis C Virus Infection, chronic or resolved*	0	52	-52	0	205	-205	0	210	-210	1939	2977
Hepatitis C, acute	0	0	0	0	1	-1	0	1	-1	13	15
Hepatitis E, acute	0	0	0	0	0	0	0	0	0	0	1
Legionellosis	0	0	0	0	0	0	0	1	-1	12	9
Listeriosis	0	0	0	0	0	0	0	0	0	15	6
Lyme disease	0	0	0	0	0	0	0	0	0	6	5
Malaria	0	0	0	0	0	0	0	0	0	5	2
Measles (Rubeola)	0	0	0	0	0	0	0	0	0	4	0
Mumps	0	0	0	0	0	0	0	0	0	2	2
Neisseria meningitidis, invasive (Mening. disease)	0	0	0	0	0	0	0	1	-1	3	3
Pertussis	5	2	3	9	6	3	9	6	3	266	148
Plague	0	0	0	0	0	0	0	0	0	2	0
Q fever	0	0	0	0	0	0	0	0	0	0	5
Rabies, animal	1	0	1	9	1	8	9	1	8	19	14
Salmonellosis	3	5	-2	11	19	-8	11	20	-9	339	347
Shiga toxin-producing Escherichia coli (STEC)	0	1	-1	2	3	-1	2	2	0	41	47
Shigellosis	0	2	-2	2	8	-6	2	8	-6	120	166
Spotted Fever Rickettsiosis	0	0	0	0	0	0	0	0	0	0	1
Strep pneumoniae, invasive	0	8	-8	17	32	-15	17	30	-13	261	281

*Data are affected by significant reporting delays

Summary of Notifiable Infectious Diseases Reported to the New Mexico Electronic Disease Surveillance System (NM-EDSS) As of January 28, 2012

Includes probable and confirmed cases only.

Data for the current year are provisional and may change significantly upon the completion of ongoing investigations.

Data for prior years are also subject to minor revisions due to corrections or identification of historical cases.

Condition	This week	5-year weekly average	Week diff	Last 4 weeks	5-year 4-week average	Last 4 weeks diff	YTD 2012	5-year YTD average	YTD diff	Total 2011	Total 2010
Streptococcal toxic-shock syndrome	0	0	0	0	0	0	0	0	0	0	0
Tetanus	0	0	0	0	0	0	0	0	0	0	0
Tularemia, Human	0	0	0	0	0	0	0	0	0	7	2
Typhoid fever (Salmonella typhi)	0	0	0	0	0	0	0	0	0	1	0
Varicella (Chickenpox)	0	4	-4	9	17	-8	9	19	-10	65	95
Vibrio parahaemolyticus	0	0	0	0	0	0	0	0	0	2	2
Vibrio spp., non-toxigenic, other or unspecified	0	0	0	0	0	0	0	0	0	0	0
West Nile virus neuroinvasive disease	0	0	0	0	0	0	0	0	0	3	21
West Nile virus non-neuroinvasive disease	0	0	0	0	0	0	0	0	0	1	4
Yersiniosis	0	0	0	1	0	1	1	0	1	1	0

*Data are affected by significant reporting delays